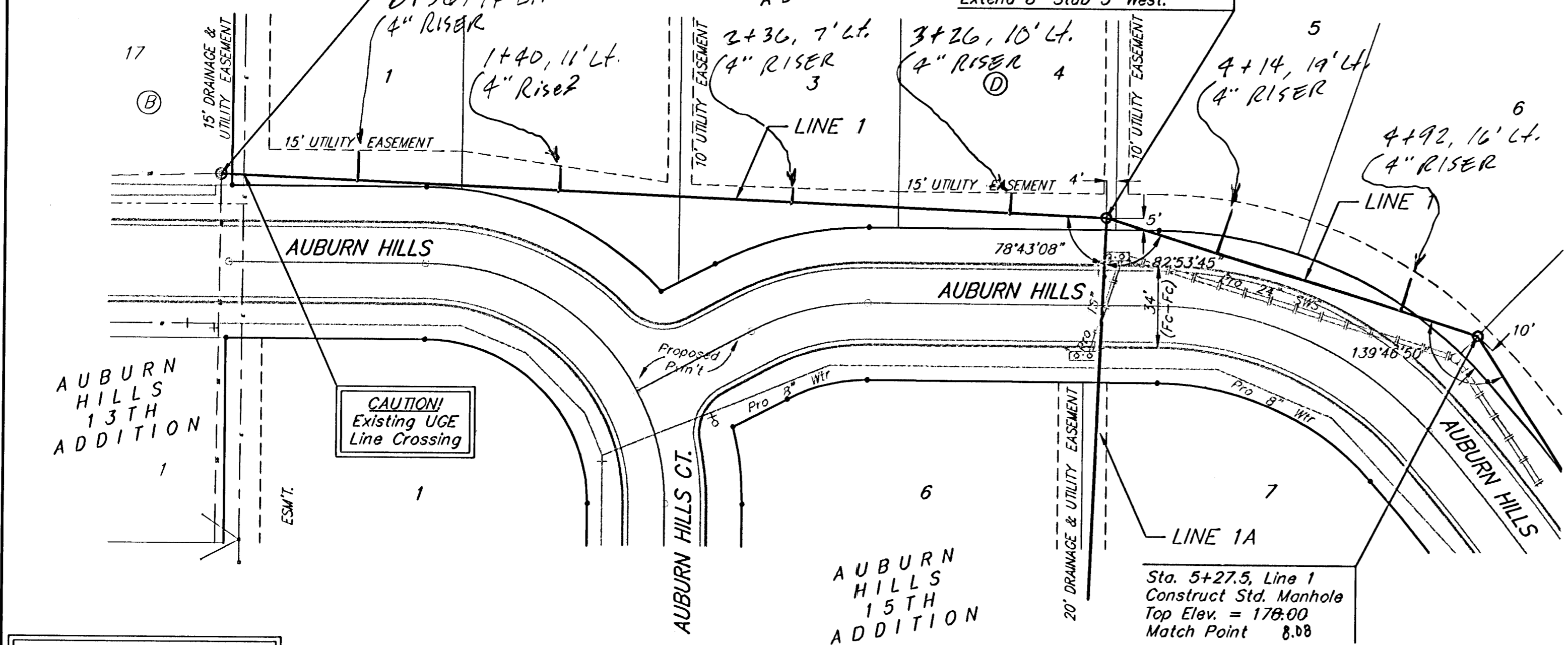
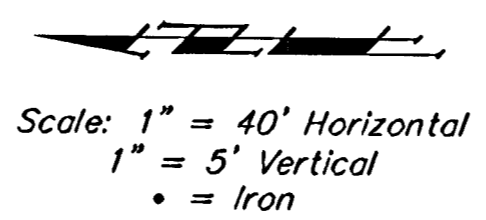


**Benchmark.**

City Disc in T.C. Adj. to F.H.  
38' South of intersection of  
Onewood and Auburn Hills.  
Elev. = 178.48 (City Datum)

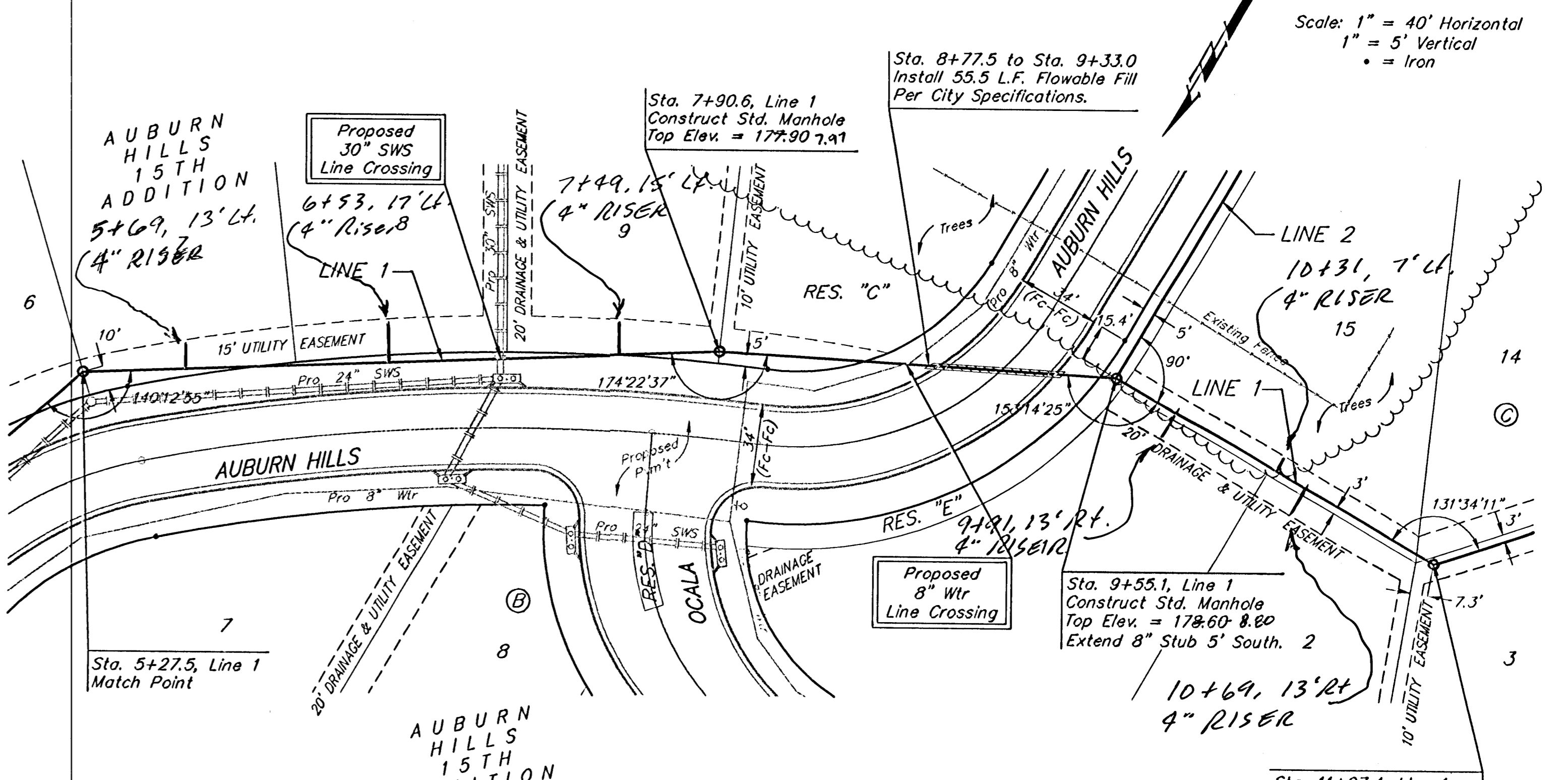
"□" cut in south curb of  
Onewood 272' west of C.L.  
Auburn Hills.  
Elev. = 179.73 (City Datum)

Sta. 0+00, Begin Line 1 Connect  
to Existing Stub and Extend 10"  
Pipe South. Cost to be  
incidental to "Site Clearing and  
Restoration" Bid Item

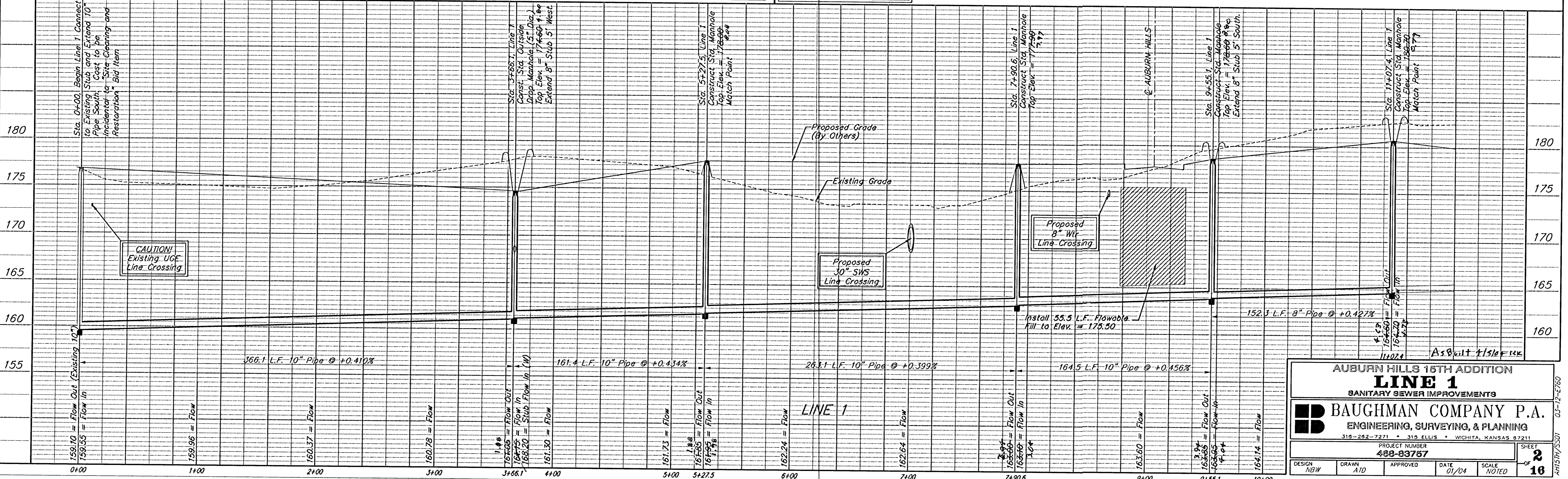


Remove trees ONLY as  
necessary for sanitary sewer  
construction. Cost of  
removal to be incidental to  
lump sum bid item "Site  
Clearing & Restoration".

The contractor shall be required to  
backfill trench with sand from  
Sta. 0+00 to Sta. 9+55.1, Line 1  
excluding locations where flowable  
fill is called out. All costs shall be  
subsidiary to pipe cost.



Remove trees ONLY as  
necessary for sanitary sewer  
construction. Cost of  
removal to be incidental to  
lump sum bid item "Site  
Clearing & Restoration".



**AUBURN HILLS 15TH ADDITION**  
**LINE 1**  
SANITARY SEWER IMPROVEMENTS

**BAUGHMAN COMPANY P.A.**  
ENGINEERING, SURVEYING, & PLANNING  
316-282-7271 • 315 ELLIS • WICHITA, KANSAS 67211

PROJECT NUMBER  
**488-83787**

DESIGN: NBW    DRAWN: ATD    APPROVED: \_\_\_\_\_    DATE: 01/04    SCALE: NOTED

SHEET  
**2**  
OF  
**16**