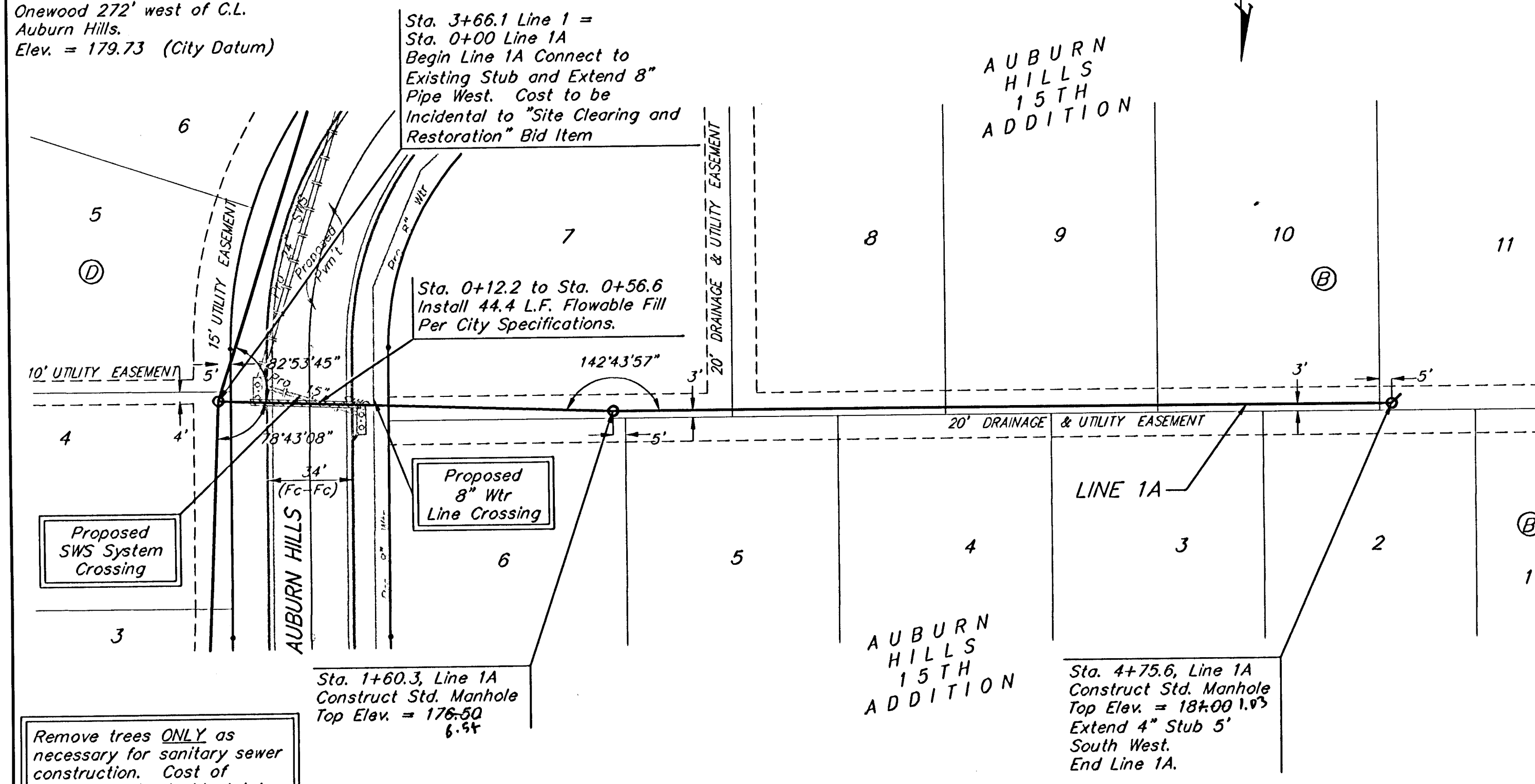


Benchmark:
City Disc In T.C. Adj. to F.H.
38' South of intersection of
Onewood and Auburn Hills.
Elev. = 178.48 (City Datum)

"□" cut in south curb of
Onewood 272' west of C.L.
Auburn Hills.
Elev. = 179.73 (City Datum)

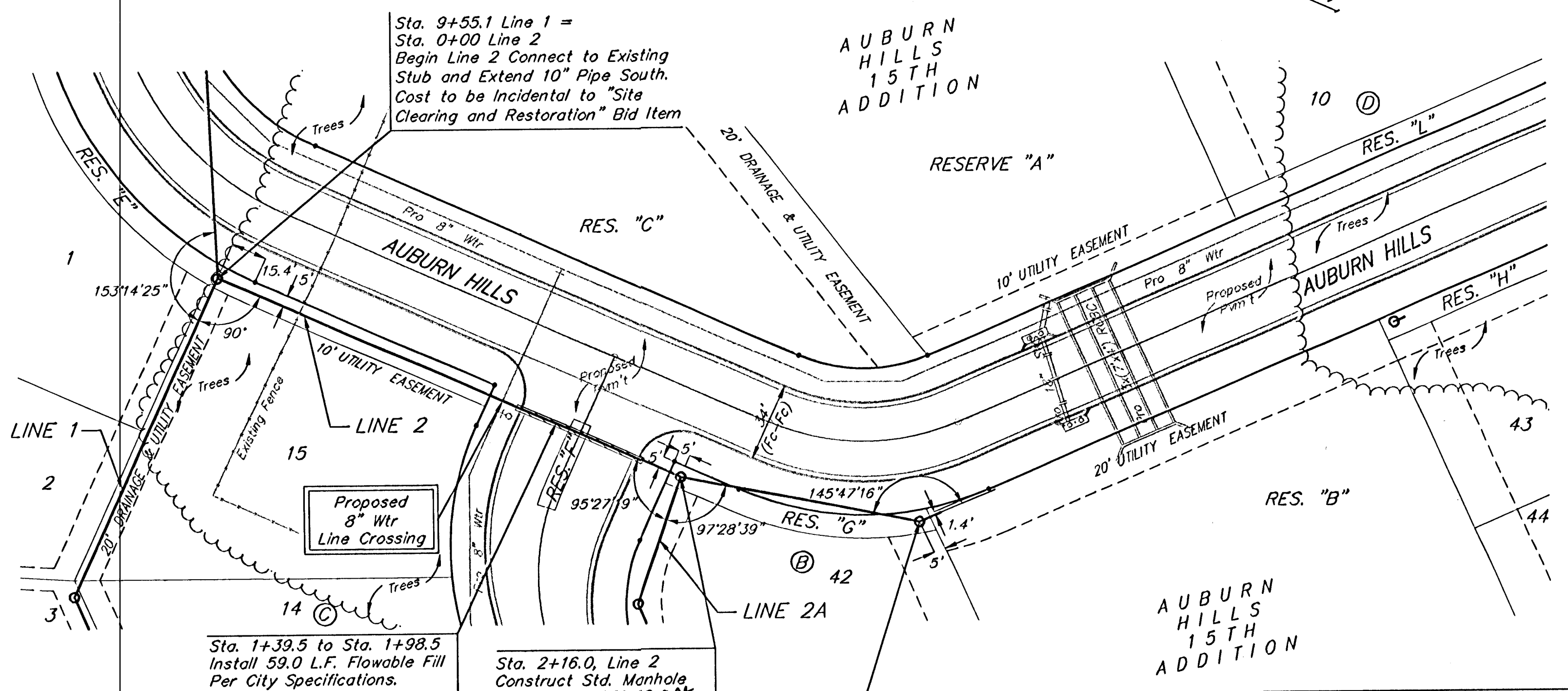
Scale: 1" = 40' Horizontal
1" = 5' Vertical
• = Iron



Remove trees ONLY as necessary for sanitary sewer construction. Cost of removal to be incidental to lump sum bid item "Site Clearing & Restoration".

Sta. 4+75.6, Line 1A
Construct Std. Manhole
Top Elev. = 18+00 1.0'
Extend 4" Stub 5'
South West.
End Line 1A.

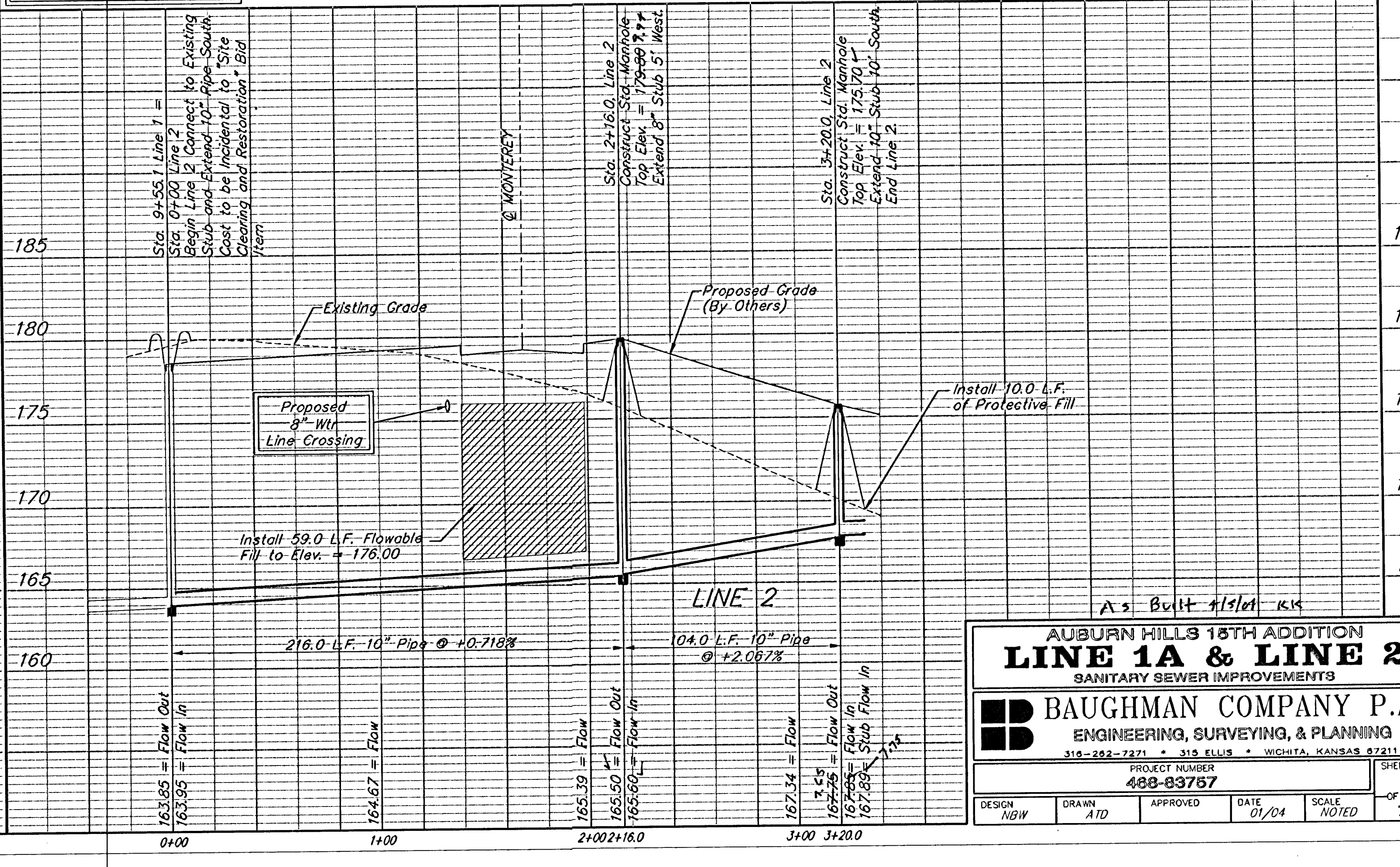
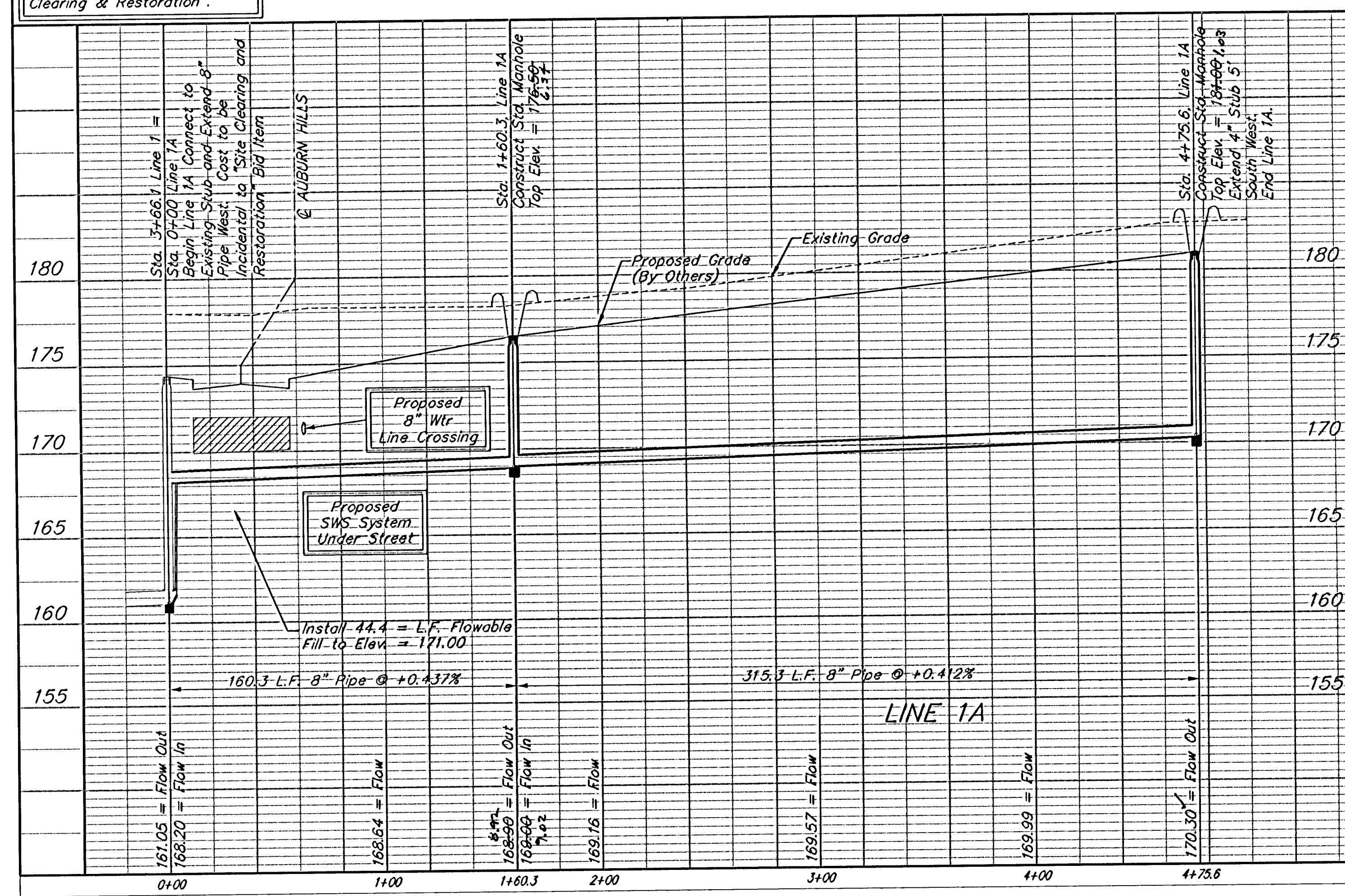
Scale: 1" = 40' Horizontal
1" = 5' Vertical
• = Iron



Remove trees ONLY as necessary for sanitary sewer construction. Cost of removal to be incidental to lump sum bid item "Site Clearing & Restoration".

Sta. 2+16.0, Line 2
Construct Std. Manhole
Top Elev. = 179.80 9.44'
Extend 8" Stub 5' West.

The contractor shall be required to backfill trench with sand from Sta. 0+00 to Sta. 3+20.0, Line 2 excluding locations where flowable fill is called out. All costs shall be subsidiary to pipe cost.



AUBURN HILLS 15TH ADDITION
LINE 1A & LINE 2
SANITARY SEWER IMPROVEMENTS

BAUGHMAN COMPANY P.A.
ENGINEERING, SURVEYING, & PLANNING
315-292-2211 • 315 ELLIS • WICHITA, KANSAS 67211

PROJECT NUMBER
488-83757

DESIGN: NBW DRAWN: ATD APPROVED: _____ DATE: 01/04 SCALE: NOTED

SHEET **4** OF **16**