

PLAN	CHECKED	DATE
	CHECKED	

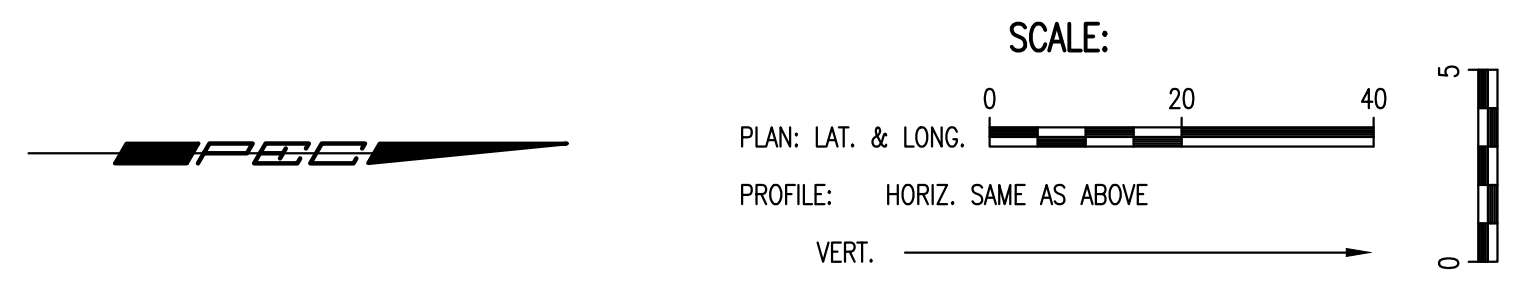
PROFILE	CHECKED	DATE
	CHECKED	

Saved: 02-09-2018 9:36:13 AM by KURTIS DEKAT  
 Plot Scale: 1" = 02'-09"-2018 9:36:11 AM by KURTIS DEKAT  
 U:\Wichita-Civil\2017\170530\000\Wm\Drawings\170530-000-013-WATERLINE NO. 1

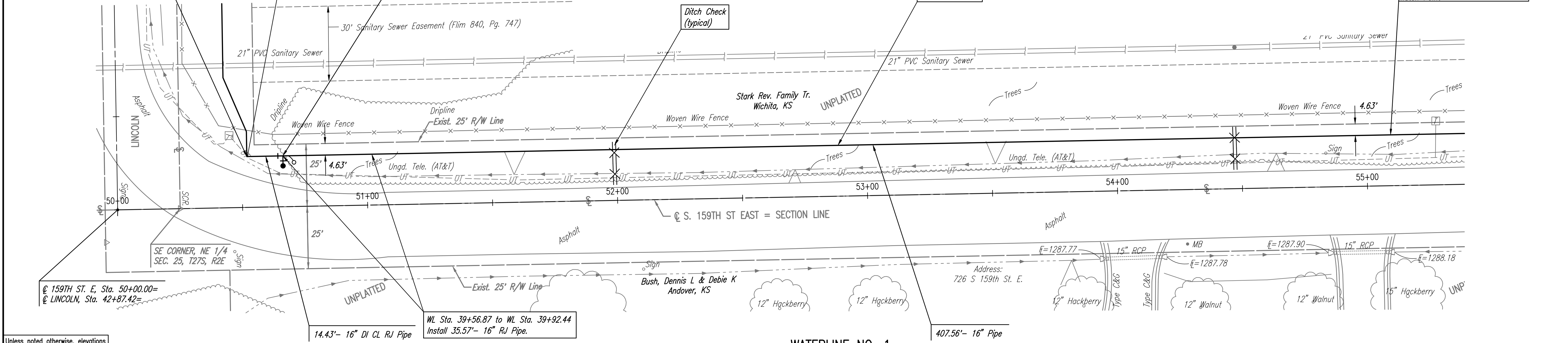
N: 1681312.0664, E: 1702155.2232  
 WL 1, Sta. 39+42.44=  
 CL 159th St, Sta. 50+52.05, 20' L  
 16" 90° RJ Bend  
 Match Point

N: 1681326.4922, E: 1702154.9490  
 WL 1, Sta. 39+56.87=  
 CL 159th St, Sta. 50+66.47, 20' L  
 1- Fire Hydrant Assembly w/ RJ Tee  
 L= 4'  
 Top Valve Box El.= 1290.0  
 FH Bury Line El.= 1290.0  
 1- 16" RJ Valve Assembly (S)  
 (Butterfly Valve)  
 Top Valve Box El.= 1290.0 (S)  
 1- 2" Air Release Assembly  
 See detail, sheet no. 18

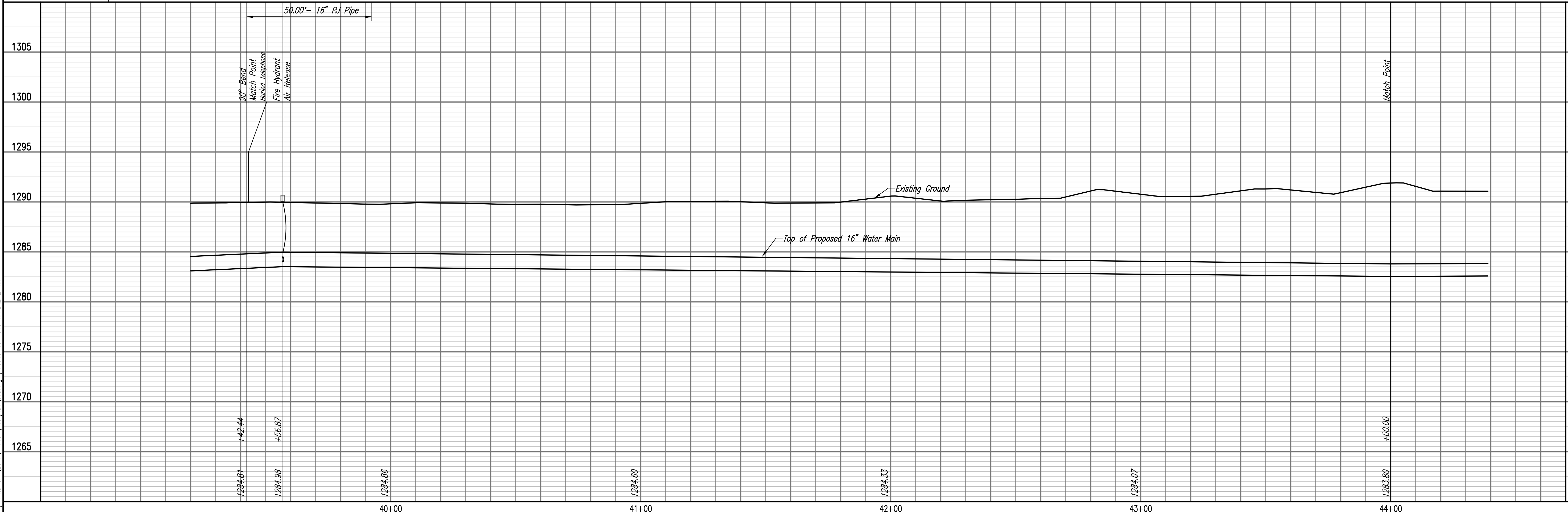
N: 1681769.5440, E: 1702146.5273  
 WL 1, Sta. 44+00.00=  
 CL 159th St, Sta. 55+09.61, 20' L  
 Match Point



5000 - SEE SHEET NO. 3 FOR WATERLINE COORDINATES (TYP.)



Unless noted otherwise, elevations shown are top of pipe



**WATERLINE NO. 1**  
 WATER DISTRIBUTION SYSTEM IMPROVEMENTS  
 16" WATERLINE ALONG 159TH STREET EAST, LINCOLN, & BROOKHAVEN

PROFESSIONAL ENGINEERING CONSULTANTS, P.A.  
 303 SOUTH TOPEKA WICHITA, KS 67202  
 316-262-2691 www.pec1.com

Designed By: JAG, TBK  
 Drawn By: CSL, KTD

Job No. 35-170530-000-0042  
 Date: May 2017

GARY JANZEN, P.E. - CITY ENGINEER  
 CITY OF WICHITA PROJECT NO. 448-90817

Sheet 13 of 23