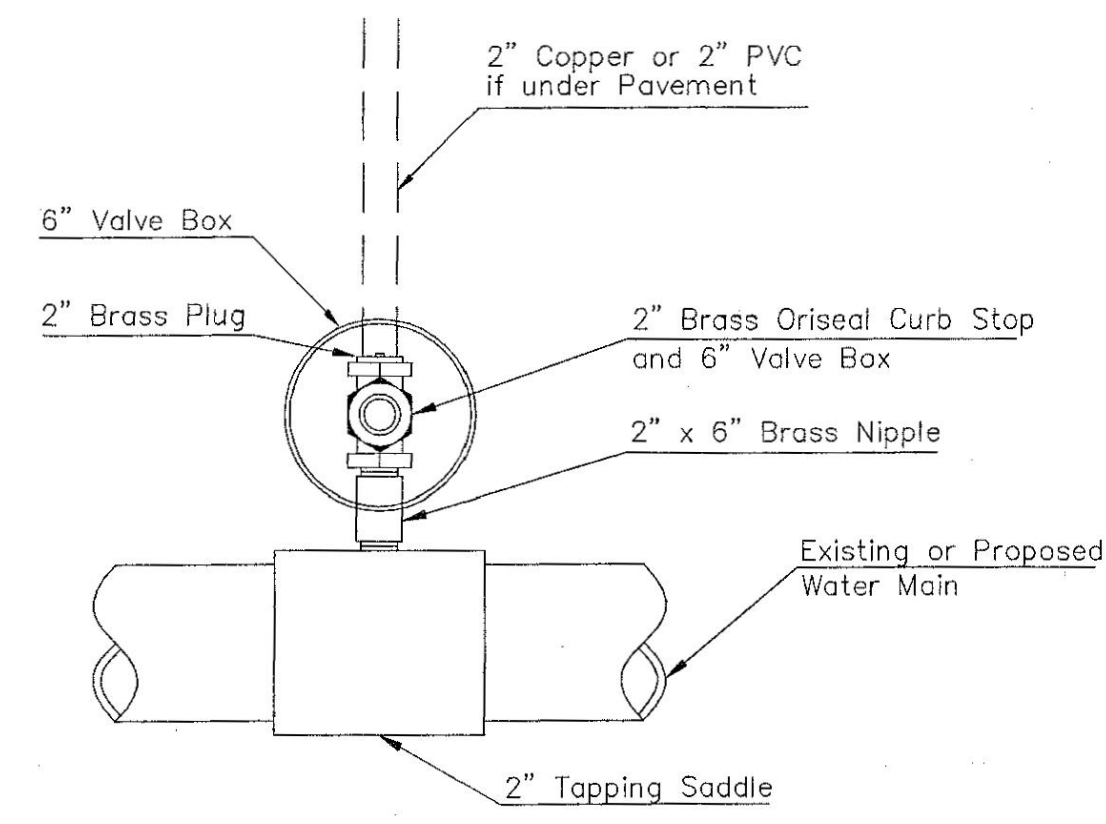


TYPICAL 1" METER SETTING

WATER SERVICE TABLE			
SERVICE LINE NO.	WATERLINE NO. 1 STATION	SERVICE ADDRESS	APPROXIMATE 1" SERVICE LINE REQUIRED (FT.)
1	17+39	1327 S BROOKHAVEN	73'
2	18+65	1315 S BROOKHAVEN	68'
3	19+43	1305 S BROOKHAVEN	70'
4	21+35	1255 S BROOKHAVEN	65'
5	22+20	1249 S BROOKHAVEN	65'

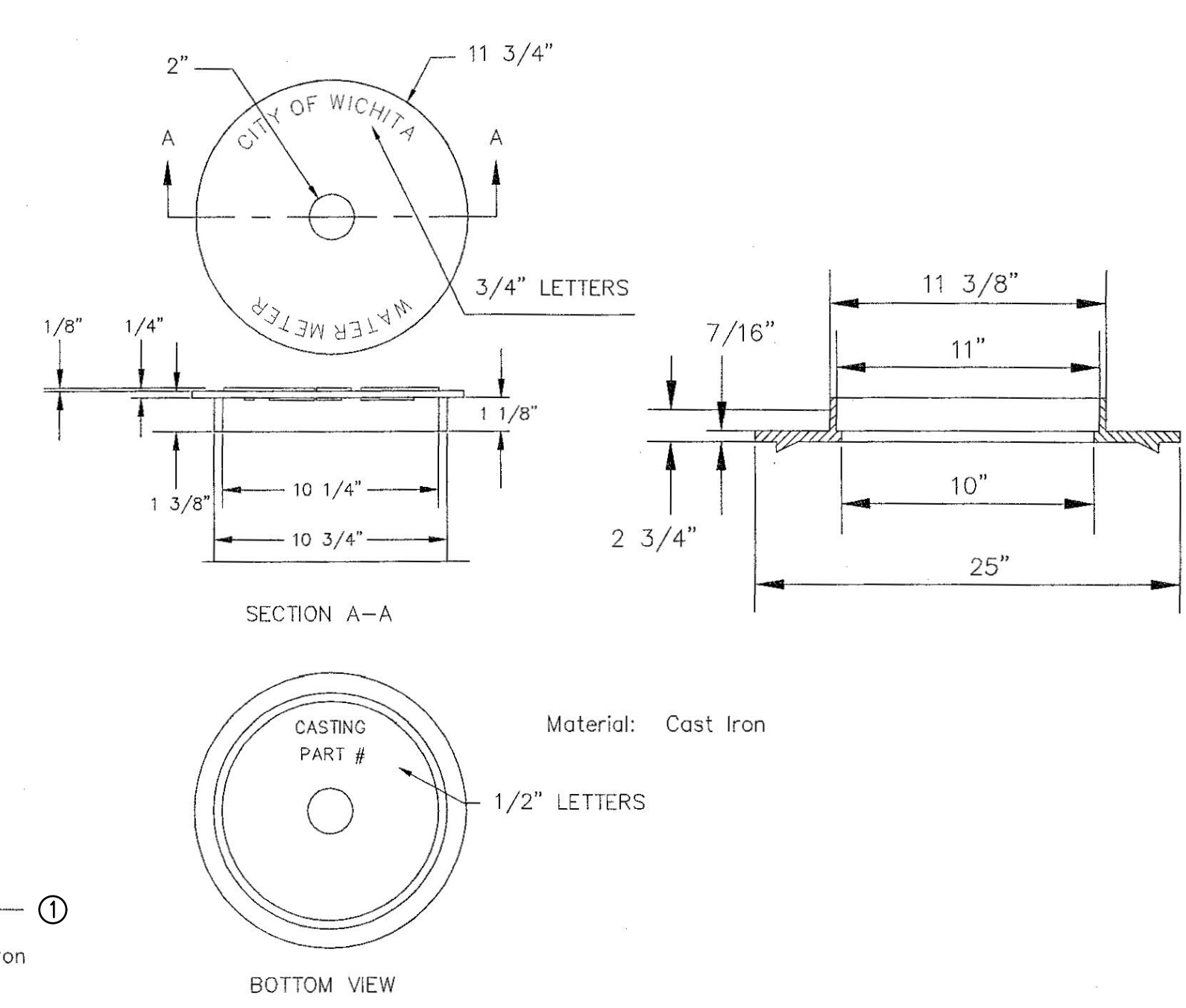
TOTAL SERVICES = 5
APPROXIMATE 1" SERVICE LINE = 341'

NOTE: THE CONTRACTOR SHALL PROVIDE METER ADAPTORS AS NEEDED. THE WATER SERVICES SHALL BE BID AS "WATER SERVICE REPLACEMENT" PER EACH.



Note: Where the 2" Service Outlet Assembly is to be used to connect a 2" main to another main, the 2" valve shall be a 2" IPT Gate Valve. 2" ball or globe valves shall not be approved for this use.

2" SERVICE OUTLET ASSEMBLY
TOP VIEW



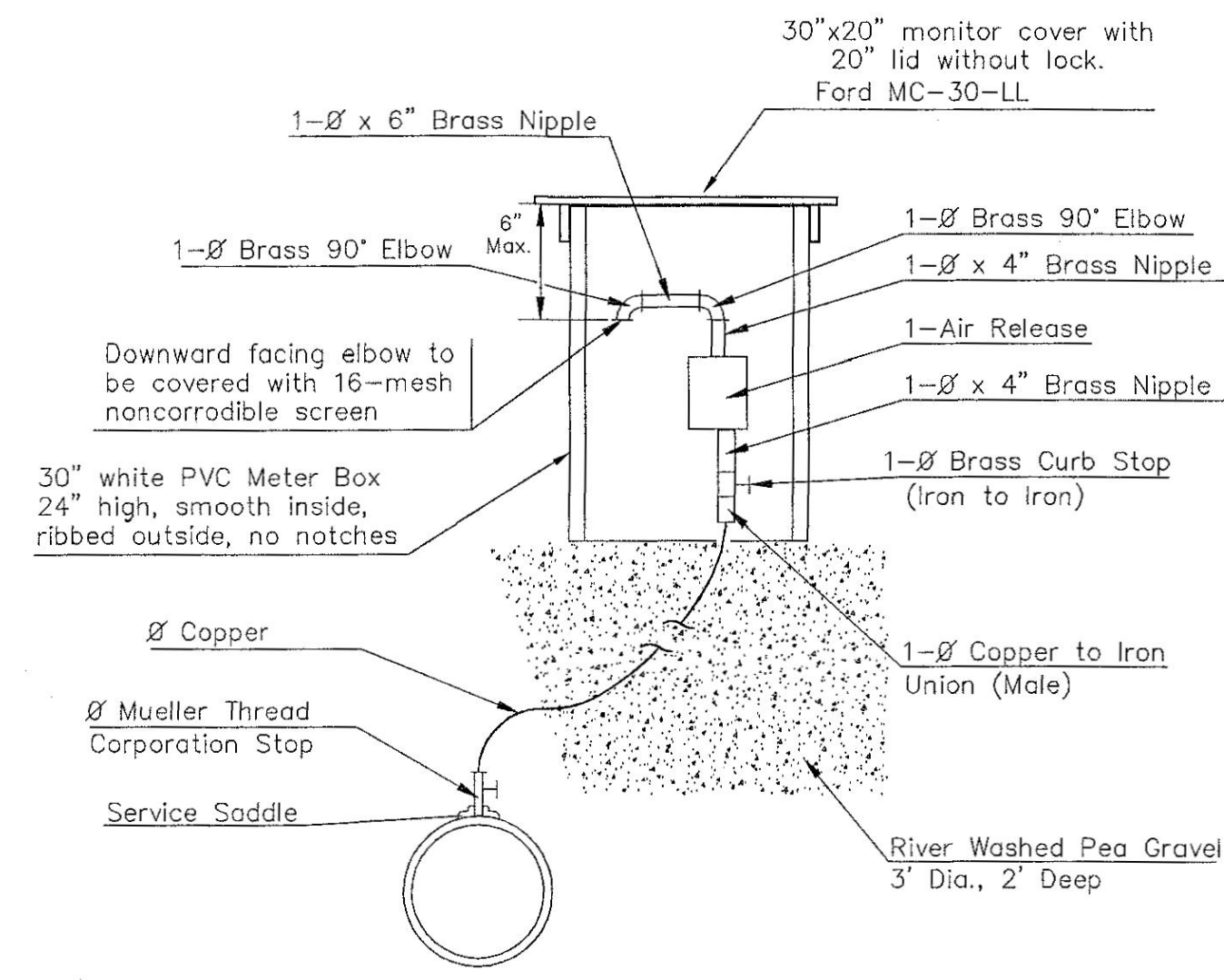
NOT TRAFFIC RATED RING & LID FOR 1" METER BOX

THE CONTRACTOR SHALL CONNECT NEW SERVICE TO EXISTING SERVICE LINE. "SHARK BITE" COUPLINGS WITH ADAPTORS AS REQUIRED. ALL COST FOR THE WORK SHALL BE INCLUDED IN THE UNIT PRICE BID ITEM "WATER SERVICE COMPLETE REPLACEMENT".

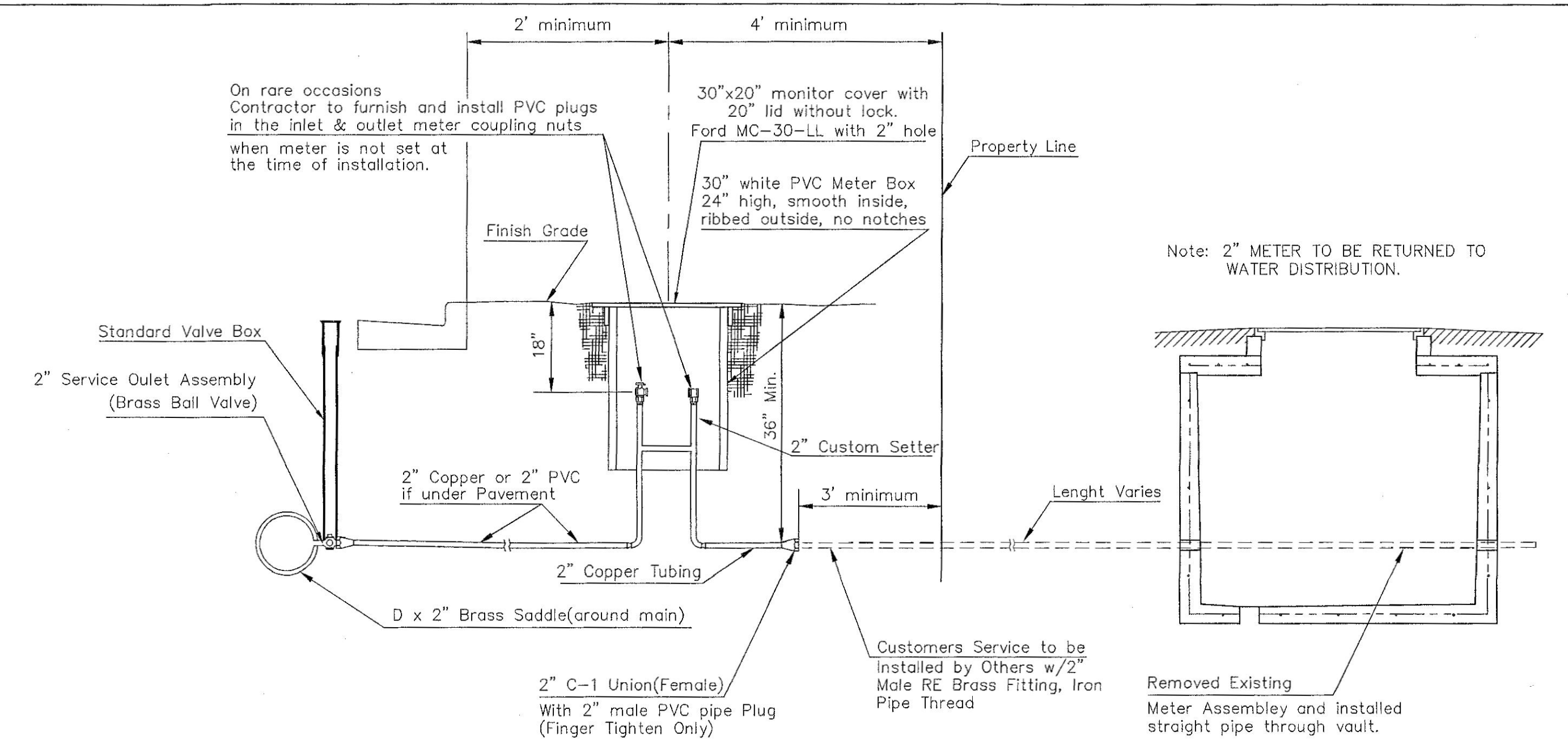
- 1 - Ø Mueller Thread Corporation Stop
- Ø Type "K" Copper Tubing
- 1 - Ø Copper to Iron Union (Male)
- 1 - Ø Brass Curb Stop (Iron to Iron)
- 2 - Øx4" Brass Nipple
- Air Release
- 2 - Ø Brass Elbows (90°)
- 1 - 1"x6" Brass Nipple
- 1 - 30" Monitor Cover
- 1 - 20" Meter Lid

NOTE:

THE 1 1/2" AIR RELEASE ASSEMBLY WILL TYPICALLY BE USED ON WATER MAINS 24" AND SMALLER, AS SPECIFICALLY DESIGNATED IN THE PLANS. COMBINATION AIR RELEASE ASSEMBLIES WILL BE SPECIFICALLY DESIGNED FOR PROJECTS WITH LARGER MAINS, AND WILL BE INCLUDED IN THE PLANS.



MATERIALS FOR 1" or 2" AIR RELEASE ASSEMBLY
Ø = 1" or 2"

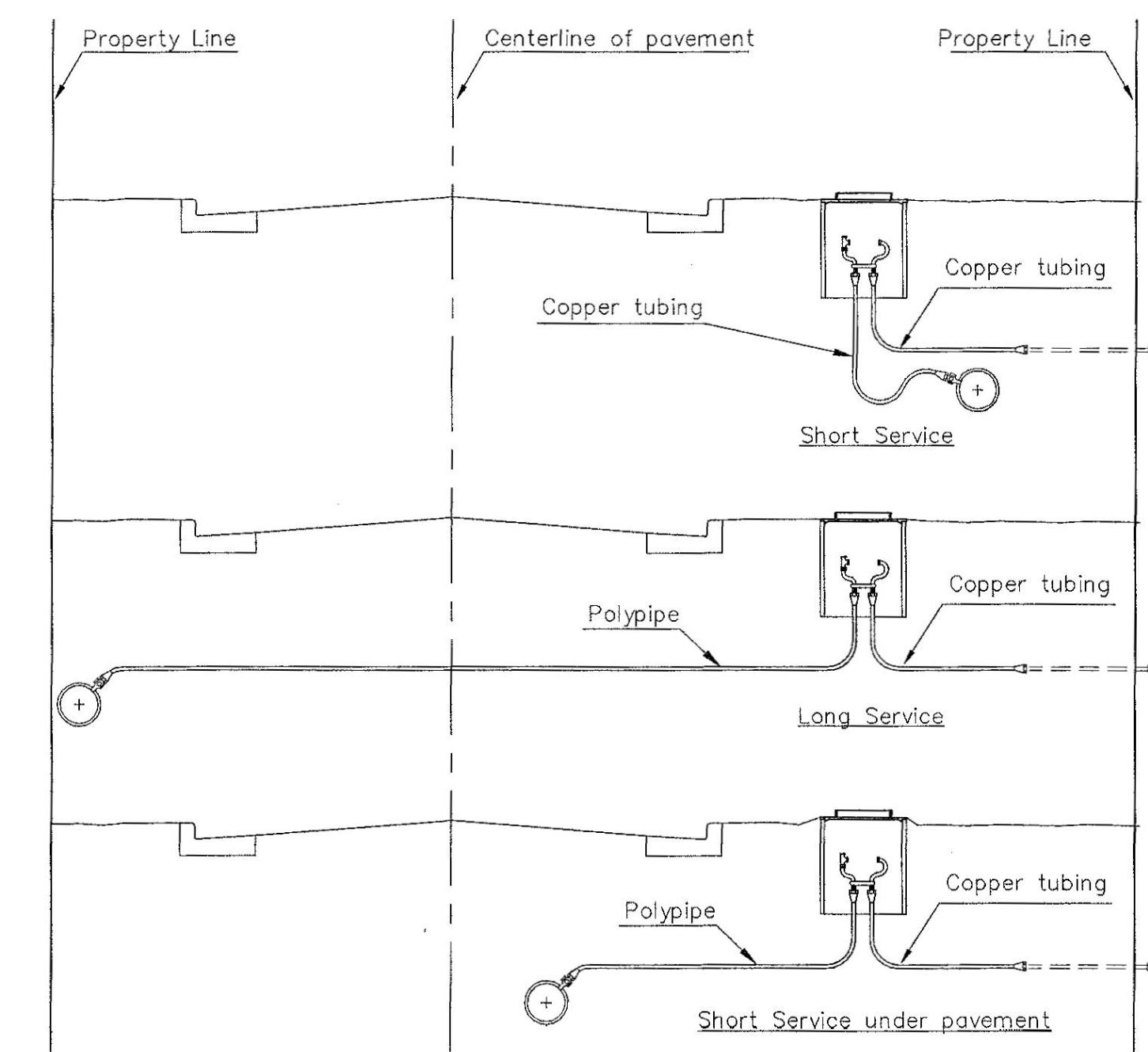


TYPICAL 2" METER SETTING

Note: ONE VALVE STEM EXTENSION FOR EACH VALVE BURIED GREATER THAN 5'.

TYPICAL 2" METER SETTING INVOLVING EXISTING 2" METER VAULT

Note: ONE VALVE STEM EXTENSION FOR EACH VALVE BURIED GREATER THAN 5'.



SERVICE TYPES



STANDARD WATER SERVICE DETAIL
CITY ENGINEER
GARY JANZEN, P.E.

PROJECT NUMBER 448-90817	OCA NUMBER 637407	DATE
-----------------------------	----------------------	------

CITY ENGINEER'S OFFICE
CITY HALL - SEVENTH FLOOR
455 NORTH MAIN STREET
WICHITA, KANSAS 67202-1620
(316) 268-4501

SHEET
18 of 23

Scaled 11-14-2017 1:31:22 PM by: CADR, LINK
 Plot Scale 1:2,500 02-02-2018 3:11:38 PM by: CADR, LINK
 U:\Wichita-Civil\2017\170530\000\Main\Drawings\170530-000-018-STANDARD WATER SERVICE DETAIL