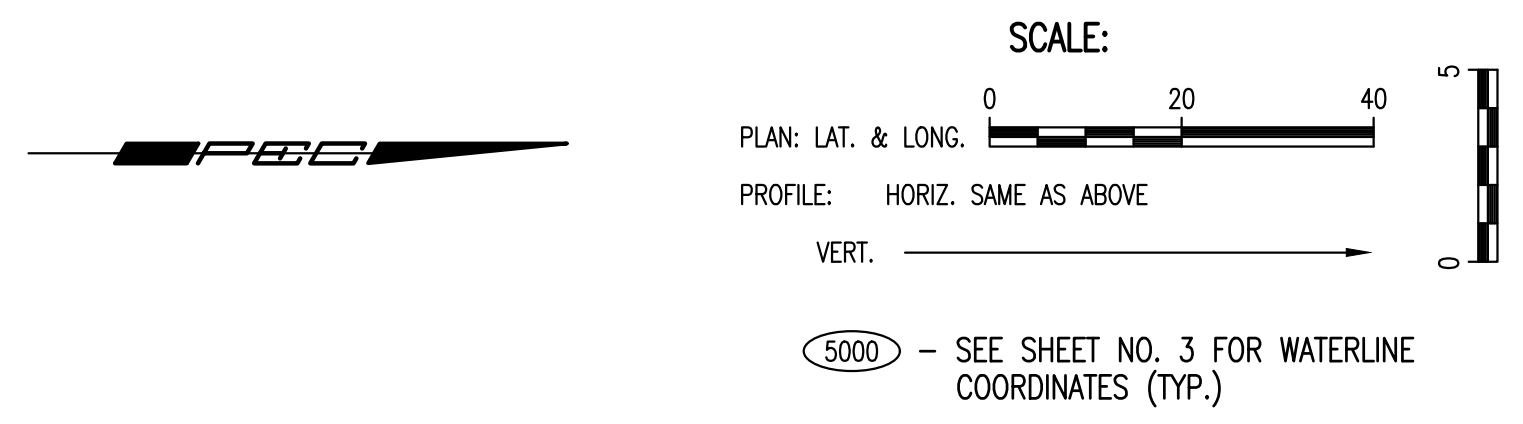
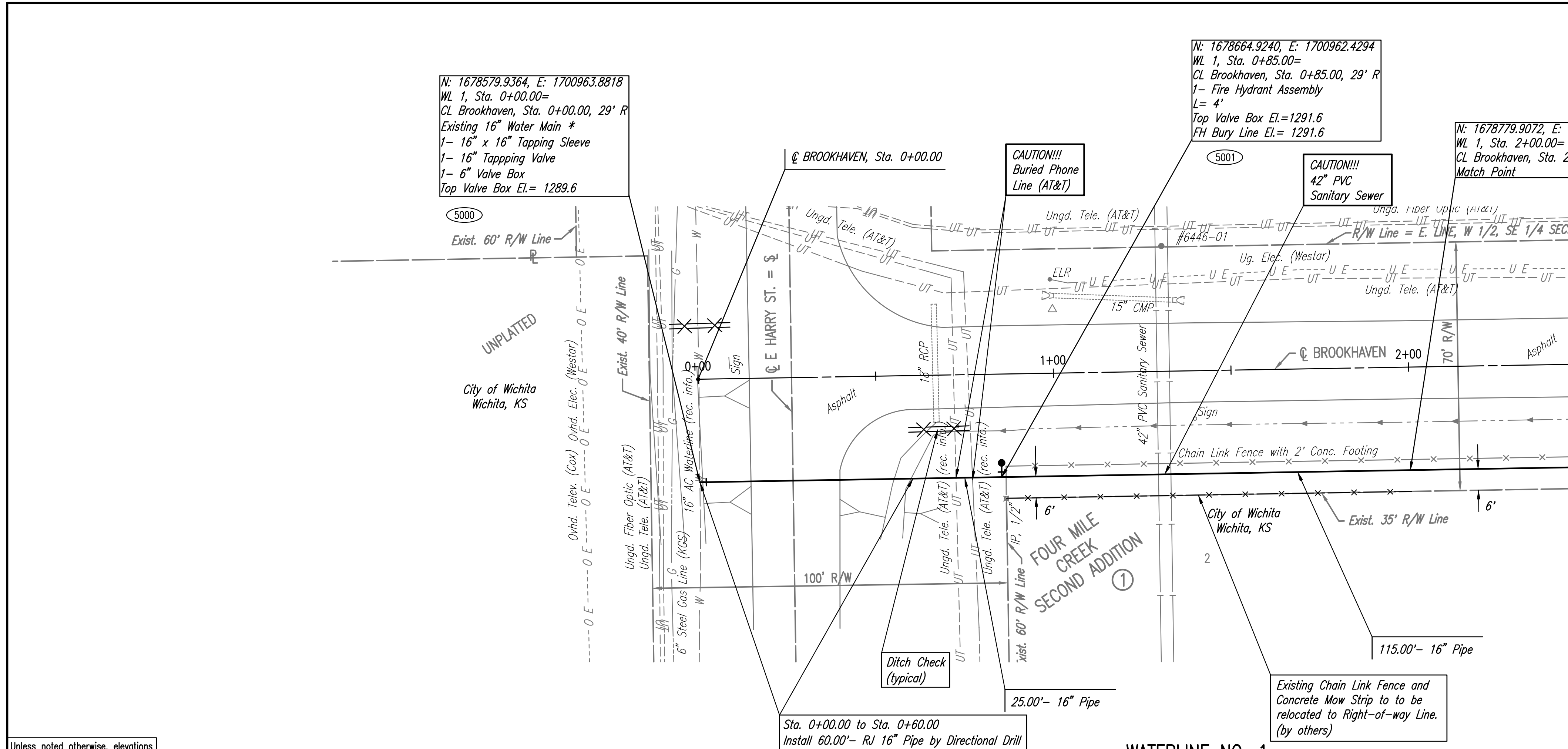


PLAN	CHECKED	BY	DATE
	CHECKED		

PROFILE	CHECKED	BY	DATE
	CHECKED		

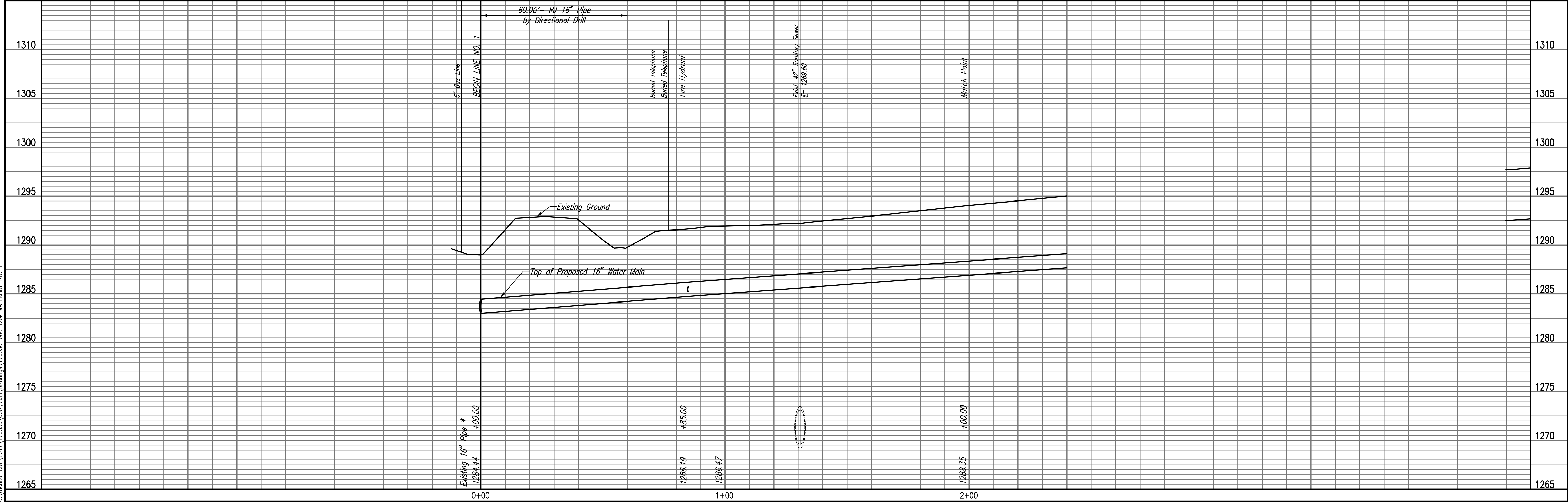
Saved: 02-02-2018 1:55:10 PM by: CSI  
 Plot Scale: 1" = 10'-0" (2018 3:08:29 PM) by: CSI  
 U:\Wichita-Civil\2017\170530\000\Drawings\170530-000-004-WATERLINE NO. 1



\* PRIOR TO BEGINNING CONSTRUCTION, THE CONTRACTOR SHALL EXCAVATE THE EXISTING 16" WATERLINE AT STATION 0+00.00 TO VERIFY PIPE SIZE, TYPE, FITTINGS, AND HORIZONTAL AND VERTICAL LOCATION. THE CONTRACTOR SHALL REPORT HIS FINDINGS TO THE ENGINEER SO THAT ANY NECESSARY PLAN MODIFICATIONS CAN BE MADE. ANY ADDITIONAL LABOR OR MATERIALS NECESSARY TO COMPLETE THE CONNECTION SHALL BE CONSIDERED SUBSIDIARY TO THE PROJECT.



Unless noted otherwise, elevations shown are top of pipe



**WATERLINE NO. 1**  
 WATER DISTRIBUTION SYSTEM IMPROVEMENTS  
 16" WATERLINE ALONG 159TH STREET EAST, LINCOLN, & BROOKHAVEN  
 PROFESSIONAL ENGINEERING CONSULTANTS, P.A.  
 303 SOUTH TOPEKA WICHITA, KS 67202  
 316-262-2691 www.pec1.com  
 Designed By: JAG, TBK  
 Drawn By: CSL, KTD  
 Job No.: 35-170530-000-0042  
 Date: May 2017  
 GARY JANZEN, P.E. - CITY ENGINEER  
 CITY OF WICHITA PROJECT NO. 448-90817  
 SHEET 4 OF 23