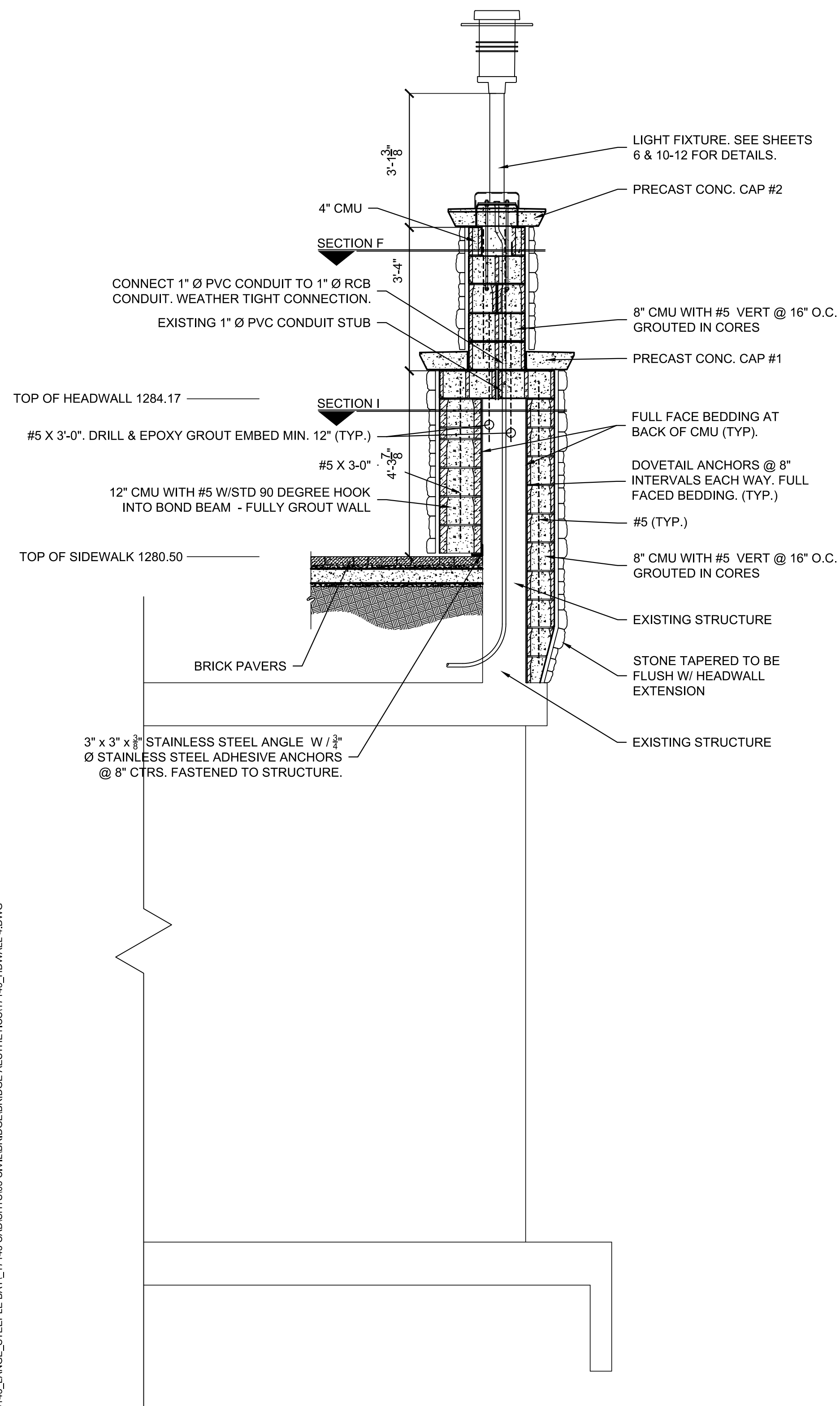
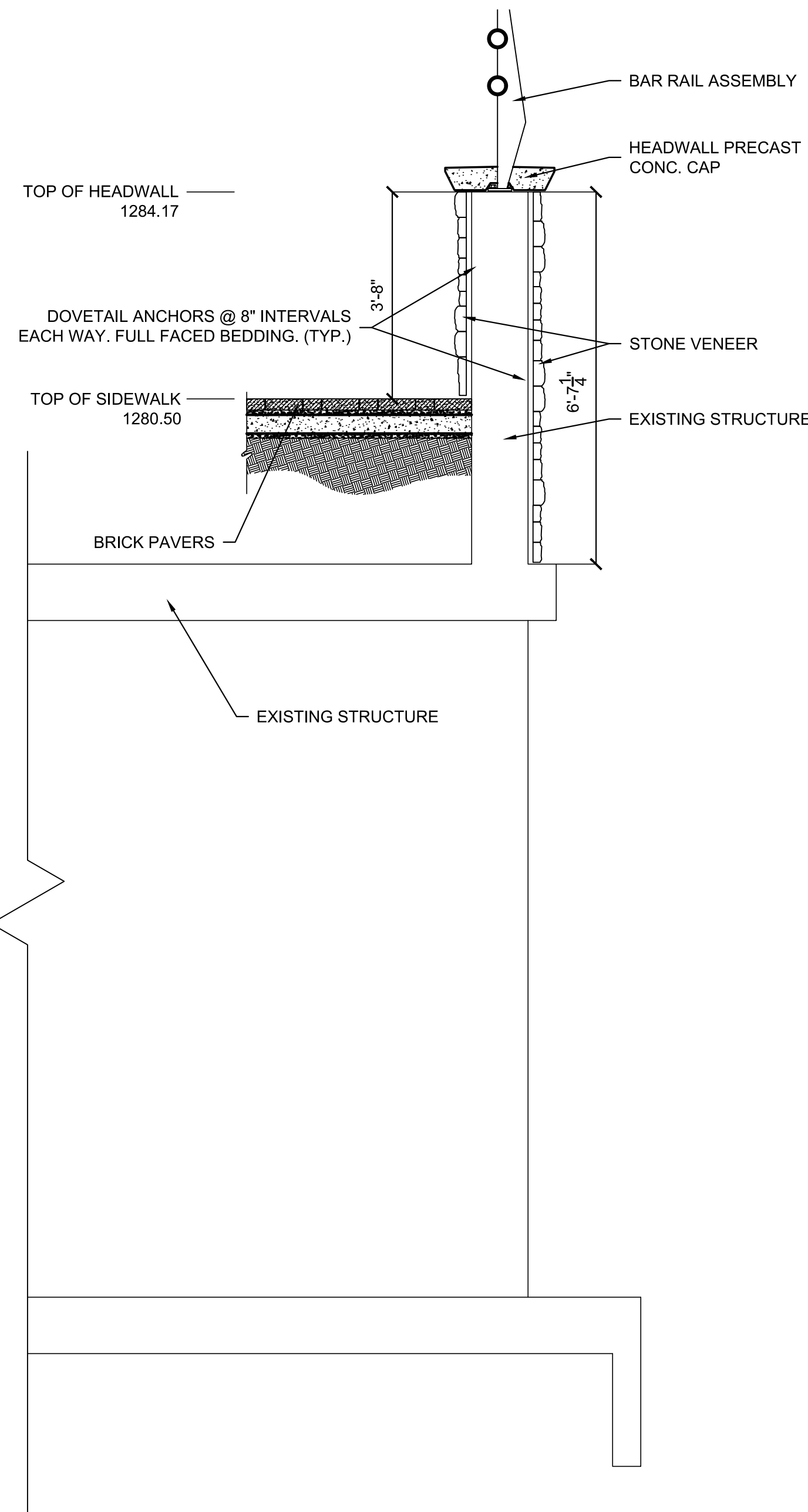


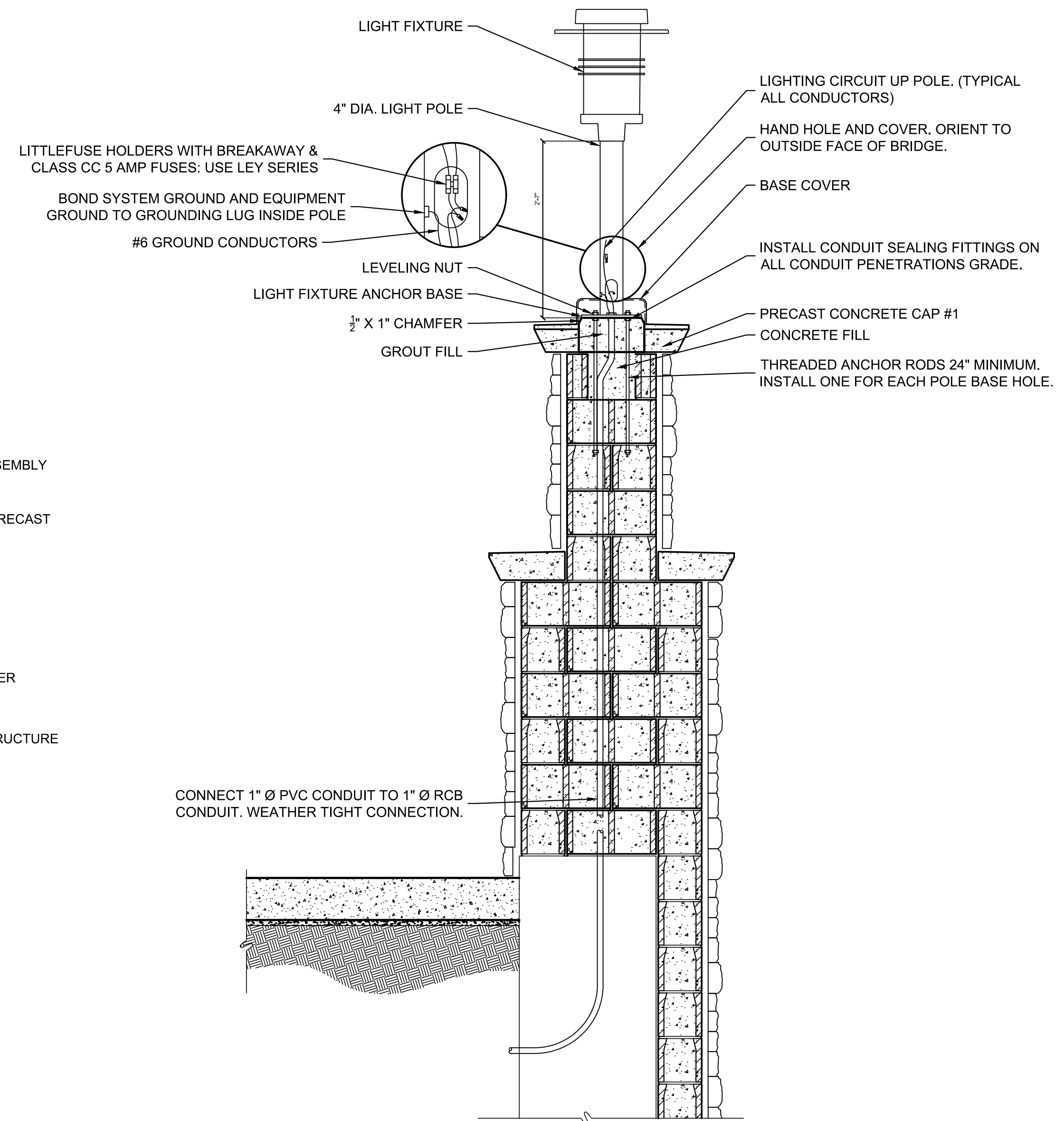
PAVING & INCIDENTAL DRAINAGE FOR  
**STEEPLE BAY ADDITION**  
WICHITA, KANSAS



**1** COLUMN #3  
SECTION D  
SCALE: 1/2" = 1'



**2** HEADWALL COPING  
SECTION E  
SCALE: 1/2" = 1'



- NOTE:
- COLUMN REBAR NOT SHOWN FOR CLARITY. SEE COLUMN DETAILS FOR INFORMATION.
  - LEVELING NUTS SHALL BE USED. POLE BEARING PLATE SHALL NOT BE SHIMMED AGAINST CONCRETE / GROUTED PIER.

**3** LIGHT FIXTURE  
SCALE: 3/4" = 1'

**GENERAL NOTES:**

1. LIGHT FIXTURE MANUFACTURER - STERNBERG LIGHTING  
555 LAWRENCE AVE., ROSELLE, IL 60172  
(847) 588-3400  
www.sternberglighting.com
- SUPPLIER - MERCER ZIMMERMAN, INC.  
245 N. WACO AVE, #510, WICHITA, KS 67202  
(316) 267-2329  
www.mzllg.com
- LIGHT FIXTURE - 1740LED CHATEAU SERIES  
PART NUMBER: PT-1740-R4-70MHP120-MED-RES-A  
FINISH: UGMT GUN METAL MATTE
- LIGHT POLE - URBAN LINE ROUND STRAIGHT STEEL POLE W/ BASE COVER  
4" DIAMETER. CUSTOM LENGTH  
FINISH: UGMT GUN METAL MATTE  
BASE COVER: ROUND 2400

©2019 MKEC Engineering All Rights Reserved www.mkec.com  
These drawings and their contents, including, but not limited to, all concepts, designs, & ideas are the exclusive property of MKEC Engineering (MKEC), and may not be used or reproduced in any way without the express consent of MKEC.

COLUMN DETAILS 2

PROJECT NO.	472-85452	
DATE	AUGUST 2019	
SCALE	AS SHOWN	
DESIGNED	DML	
DRAWN	DML	
CHECKED	RR	
NO.	REVISION	DATE
SHEET NO.		