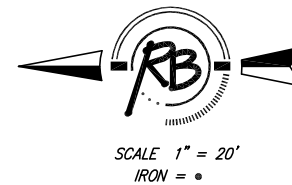


Curve 1
Curve Data Based on Centerline
Rad = 482.24' Delta = 10° 16' 04" Tangent = 43.33'
Arc = 86.42' L.C. = 86.30' Def/Ft. = 3.56438 Min.

Station	Arc	8 Lt.	8 Rt.	Defl.	T. Defl.
2+06.04	-	-	-	0°00'00"	0°00'00"
2+25.00	18.96'	19.82'	18.09'	1°07'35"	1°07'35"
2+50.00	25.00'	26.14'	23.86'	1°29'06"	2°36'41"
2+75.00	25.00'	26.14'	23.86'	1°29'06"	4°05'48"
3+00.00	25.00'	26.14'	23.86'	1°29'06"	5°34'54"
3+12.46	12.46'	13.03'	11.89'	0°44'25"	6°19'19"

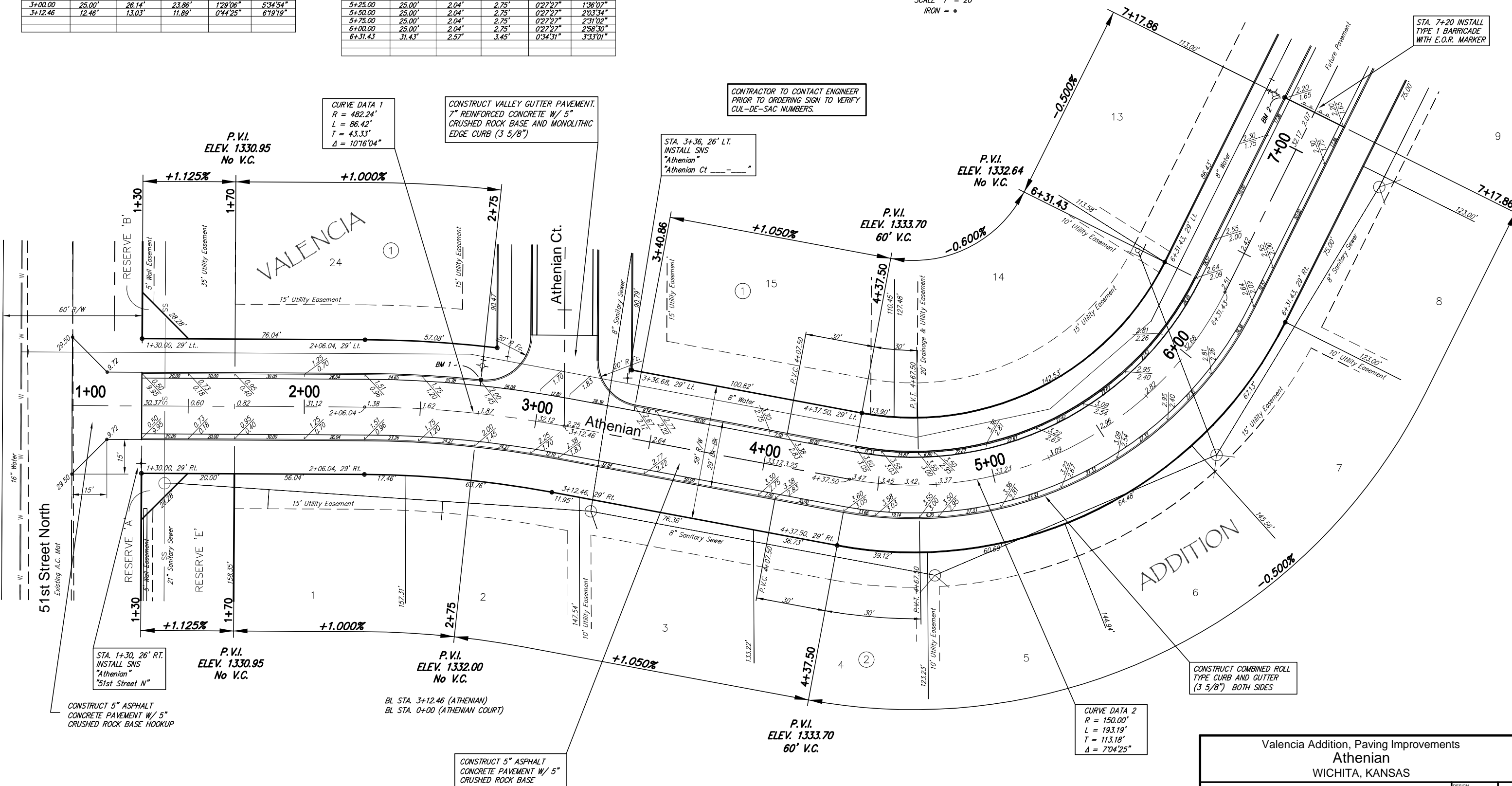
Curve 2
Curve Data Based on Centerline
Rad = 150' Delta = 7°04' 25" Tangent = 9.27'
Arc = 193.19' L.C. = 18.51' Def/Ft. = 1.09844 Min.

Station	Arc	8 Lt.	8 Rt.	Defl.	T. Defl.
4+37.50	-	-	-	0°00'00"	0°00'00"
4+50.00	12.50'	1.02'	1.37'	0°13'44"	0°13'44"
4+75.00	25.00'	2.04'	2.75'	0°27'27"	0°41'11"
5+00.00	25.00'	2.04'	2.75'	0°27'27"	1°08'39"
5+25.00	25.00'	2.04'	2.75'	0°27'27"	1°36'07"
5+50.00	25.00'	2.04'	2.75'	0°27'27"	2°03'34"
5+75.00	25.00'	2.04'	2.75'	0°27'27"	2°31'02"
6+00.00	25.00'	2.04'	2.75'	0°27'27"	2°58'30"
6+31.43	31.43'	2.57'	3.45'	0°34'31"	3°33'01"



Subdivision Bench Marks

No.	Street and Station	From CL	Description	Elevation
1	BL Sta. 2+75	14.5' Lt.	North curb return of Athenian and Athenian Court, adjacent to Fire Hydrant.	
2	BL Sta. 7+17.86	14.5' Lt.	North curb of Athenian between lots 12 and 13, adjacent to Fire Hydrant.	



CURVE DATA 1
R = 482.24'
L = 86.42'
T = 43.33'
Δ = 10°16'04"

CONSTRUCT VALLEY GUTTER PAVEMENT.
7" REINFORCED CONCRETE W/ 5"
CRUSHED ROCK BASE AND MONOLITHIC
EDGE CURB (3 5/8")

CONTRACTOR TO CONTACT ENGINEER
PRIOR TO ORDERING SIGN TO VERIFY
CUL-DE-SAC NUMBERS.

STA. 3+36, 26' LT.
INSTALL SNS
"Athenian"
"Athenian Ct. _____"

P.V.I.
ELEV. 1332.64
No V.C.

P.V.I.
ELEV. 1333.70
60' V.C.

P.V.I.
ELEV. 1330.95
No V.C.

P.V.I.
ELEV. 1330.95
No V.C.

P.V.I.
ELEV. 1332.00
No V.C.

P.V.I.
ELEV. 1333.70
60' V.C.

CURVE DATA 2
R = 150.00'
L = 193.19'
T = 113.18'
Δ = 7°04'25"

CONSTRUCT COMBINED ROLL
TYPE CURB AND GUTTER
(3 5/8") BOTH SIDES

CONSTRUCT 5" ASPHALT
CONCRETE PAVEMENT W/ 5"
CRUSHED ROCK BASE HOOKUP

CONSTRUCT 5" ASPHALT
CONCRETE PAVEMENT W/ 5"
CRUSHED ROCK BASE

BL STA. 3+12.46 (ATHENIAN)
BL STA. 0+00 (ATHENIAN COURT)

NOTE: ROLL TYPE CURB AND
GUTTER TO BE CONSTRUCTED ALONG
PAVEMENT DEPICTED ON THIS SHEET

Valencia Addition, Paving Improvements
Athenian
WICHITA, KANSAS

Ruggles & Bohm, P.A.
Engineering, Surveying, Land Planning

924 North Main (316) 264-8008
Wichita, Kansas 67203 (316) 264-4621 fax
www.rbkansas.com E-mail: info@rbkansas.com

DESIGN: CMB
DRAWN: RA
REVIEW: RA
UTILITY: RA
DATE: Apr. 10, 2007

PROJECT NUMBER: 472-84473

SHEET: 4 OF 22