

BENCHMARKS:
 Chiseled square at the end of the top of curb at the southeast corner of Ridge Port and 37th ST N. Elev. = 1333.05 NAVD88

City of Wichita Benchmark Disk adjacent to fire hydrant, south end of south curb return at the intersection of Lakeway ST & Lakeway Ct. (Lots 10-17, Block A) Siena Lakes 2nd Addition. Elev. = 1330.78 NAVD88

Chiseled square with "X" in the top of curb inlet adjacent to southeast corner of Lot 32, Block B, Siena Lakes 2nd Addition. Elev. = 1329.88 NAVD88

 = Easements To Be Graded

Approximate Easement Grading Quantities:
 (For Information Only)
 Excavation: 655 C.Y.
 Fill: 298 C.Y.

The Contractor shall grade the easements as shown to the elevations given on the easement grading plan.


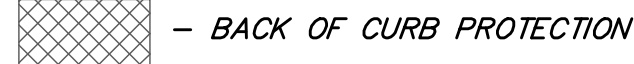
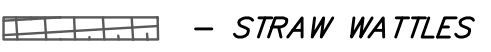
The Contractor shall 'straight' grade the easements between the elevations given. Where a callout designates 'Match', the Contractor will grade to the existing ground elevation.

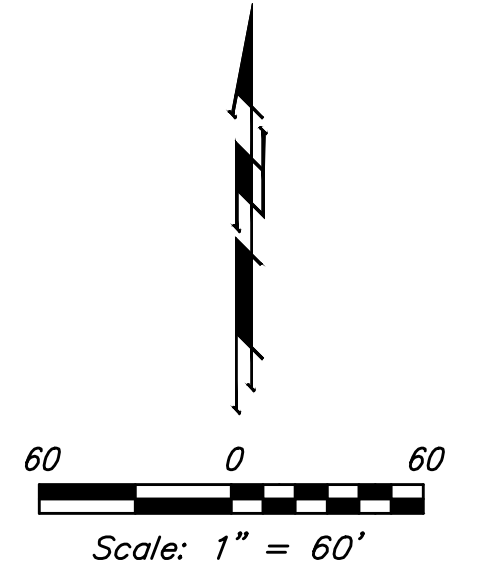
Easement grading quantities for the front yard easements along Lakeway Ct. and Venice Ct. are included in street cross section totals.

Excess excavation from easement grading and from storm sewer construction shall be spread or stockpiled at a location determined by the Developer.

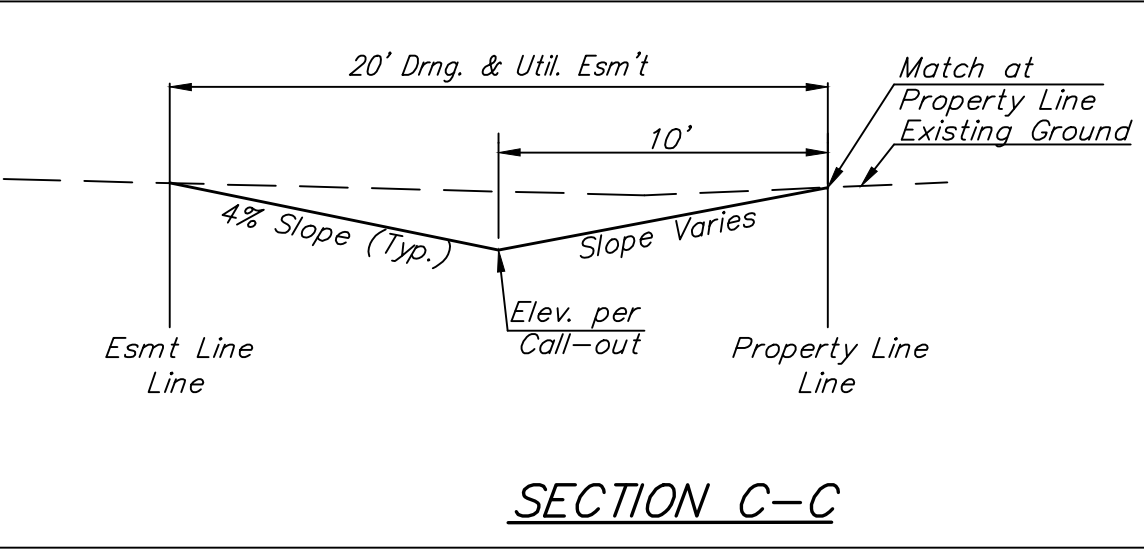
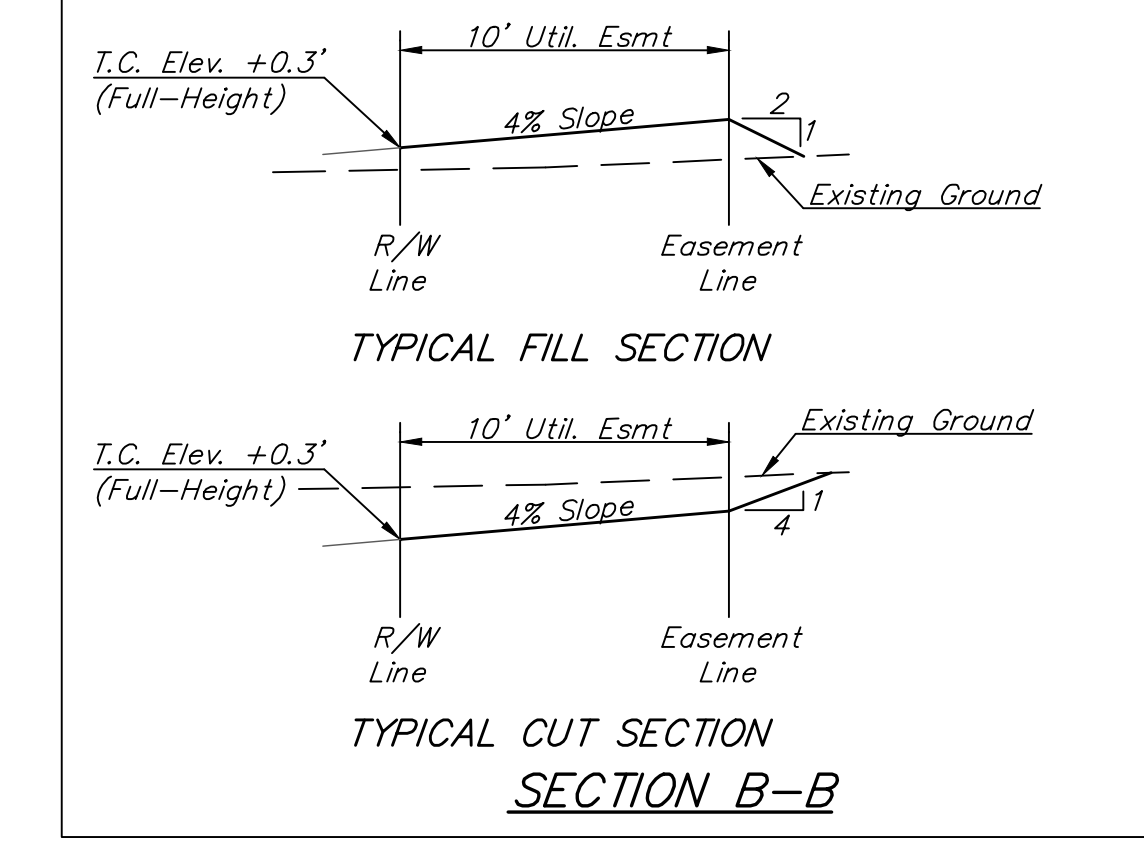
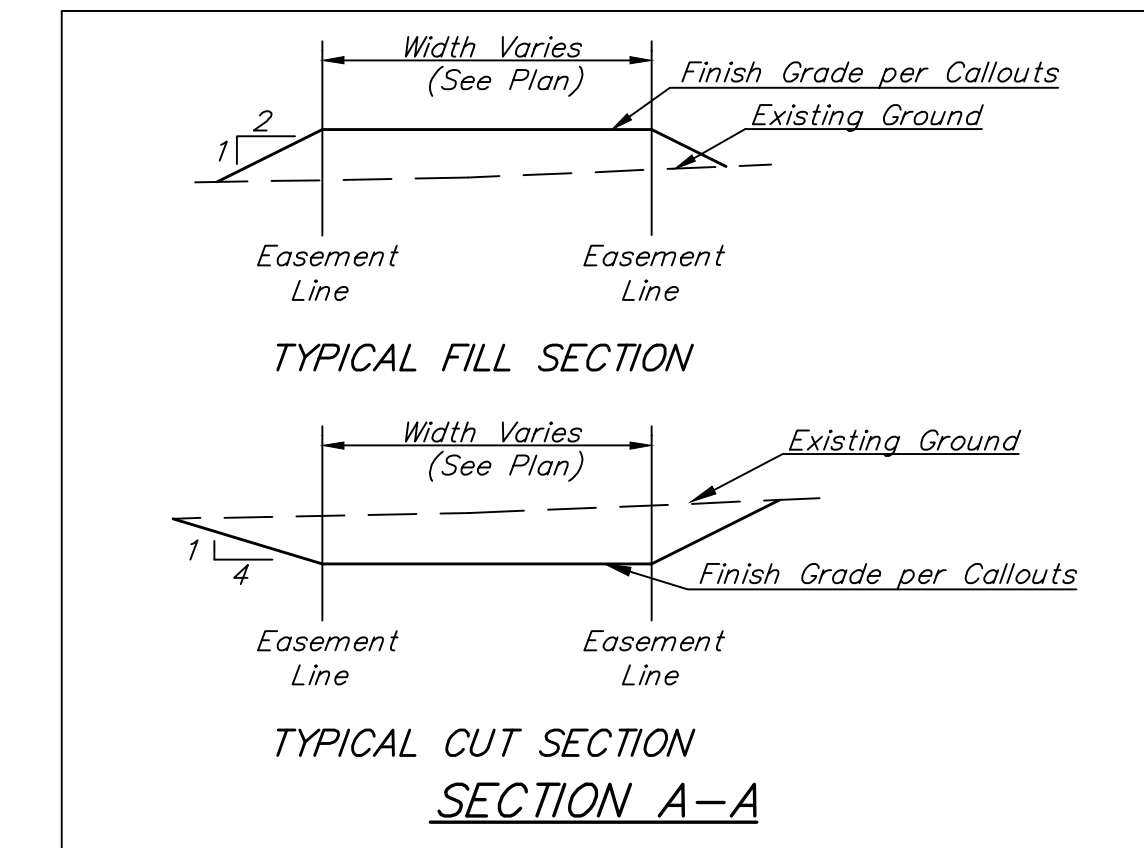
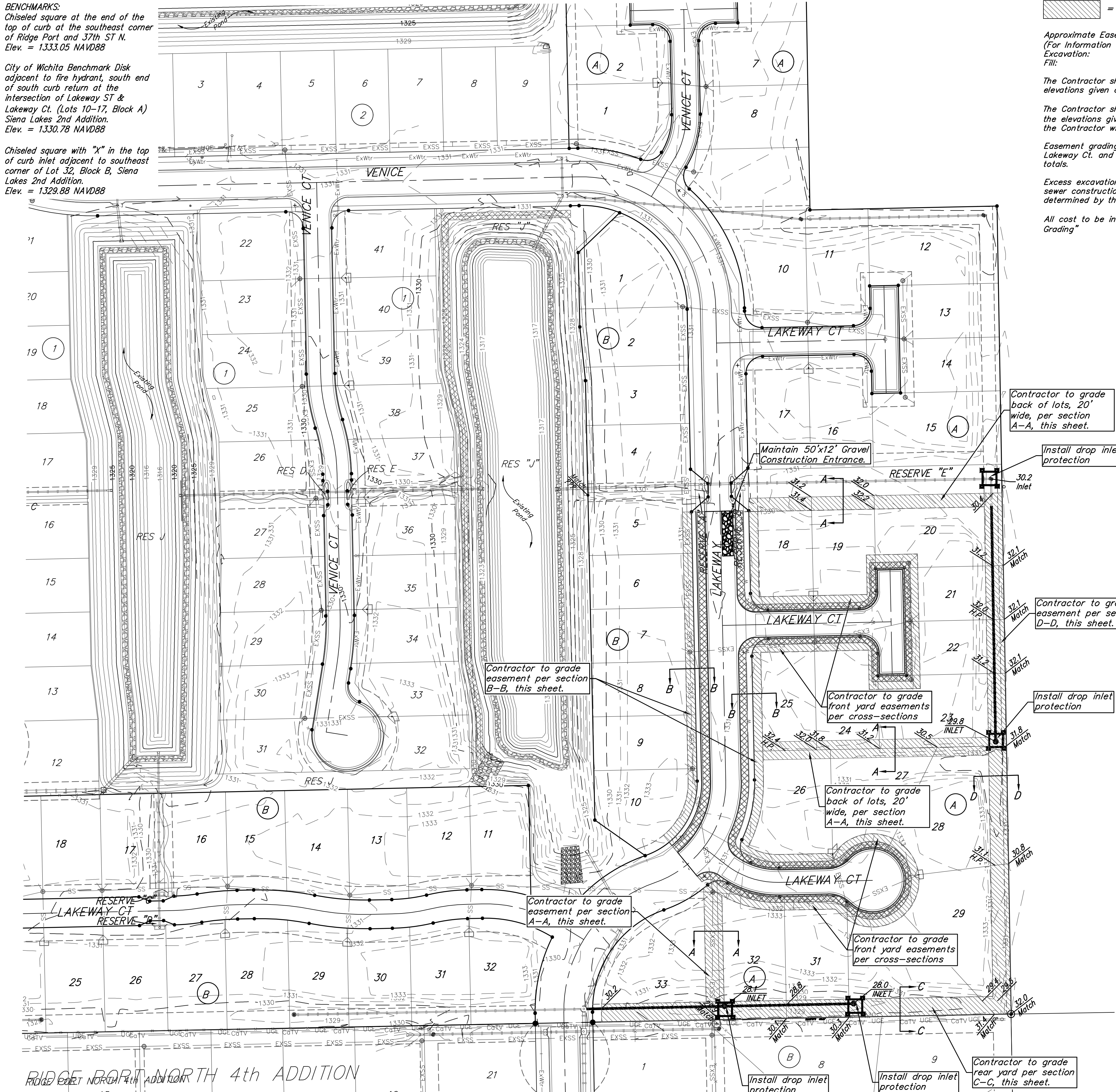
All cost to be included in the Lump Sum bid item "Easement Grading"

EROSION CONTROL PLAN LEGEND

-  - DROP INLET PROTECTION
-  - BACK OF CURB PROTECTION
-  - STRAW WATTLES



Existing Ground - - - - - 1364



- NOTES:**
- Contractor shall make sure all erosion control is in place before project is accepted. This plan represents the minimum standard. Any additional erosion control measures shall be installed by the Contractor as needed.
 - Removal of Gravel Construction Entrance for pavement construction shall be included in bid item "Site Clearing & Restoration"
 - This Plan is Not To Be Used As A Comprehensive Grading Plan. All Spot Elevations Are Proposed & Subject To Change.
- All areas disturbed during construction per Cover Sheet General Notes

EROSION CONTROL MEASURE	INSTALL	MAINTAIN
BACK OF CURB PROTECTION (LF)	1,774	0
STRAW WATTLES (LF)	0	0
CONSTRUCTION ENTRANCE (EA)	0	1
DROP INLET BARRIER (EA)	4	0
MAINTAIN EROSION CONTROL BMP's (LS)	0	1

* ALL EXISTING BMPs INCLUDING CONSTRUCTION ENTRANCE, SEDIMENT BARRIERS, SILT FENCE, CUT-OFF TRENCH, AND EROSION CONTROL MAT SHALL BE MAINTAINED AND REPAIRED IF NECESSARY.

Baughman Siena Lakes 2nd Addition - Phase II
EROSION CONTROL
 Street / SWS Improvements

ENGINEERING | SURVEYING | PLANNING | LANDSCAPE ARCHITECTURE

PROJECT NUMBER: 472-85421
 REVISIONS:

DESIGN: AEG
 DRAWN: JAK
 APPROVED: DATE: 9/03/19
 SCALE: Noted
 SHEET: **13 OF 25**