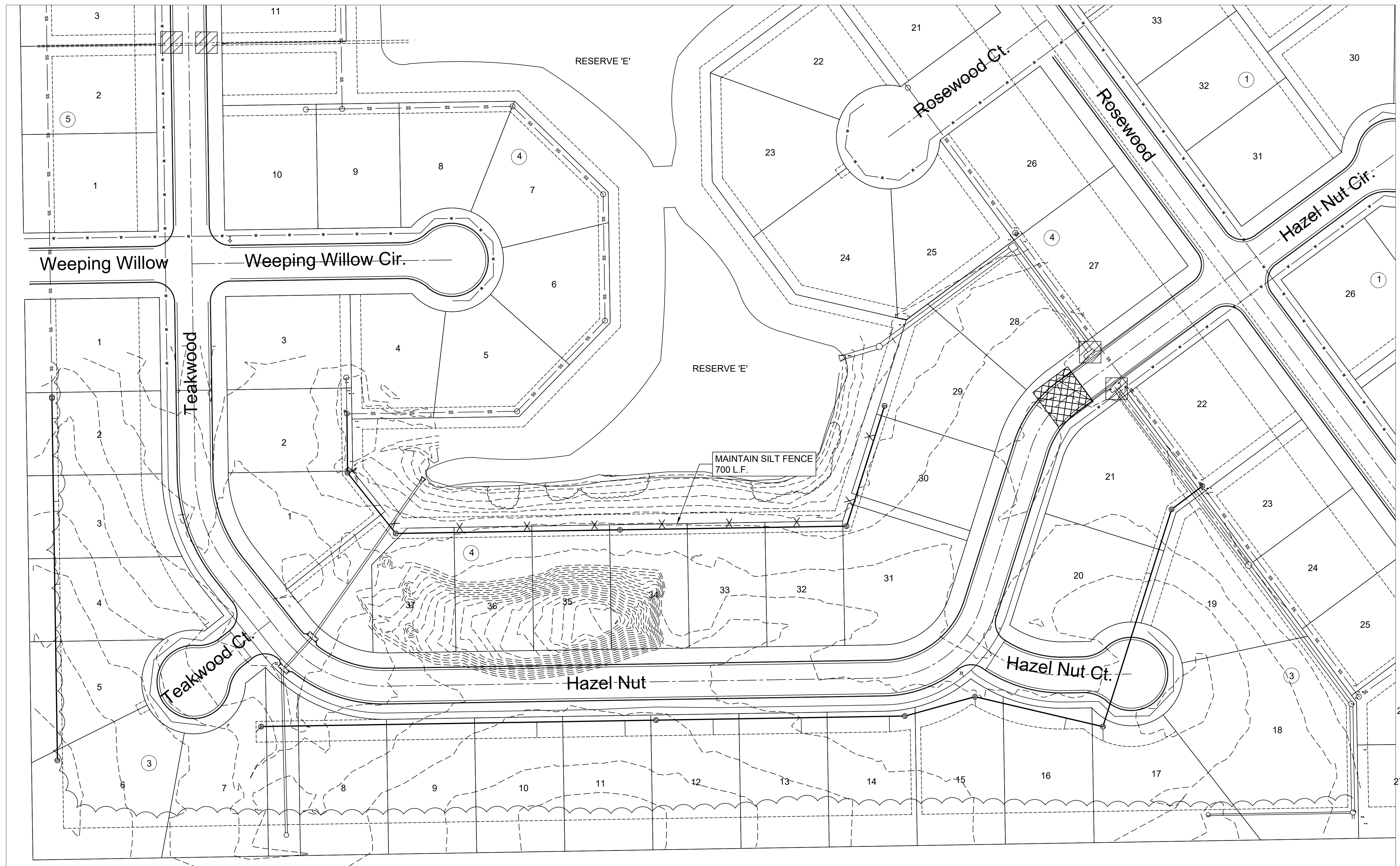
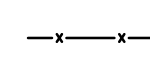
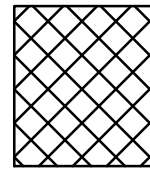
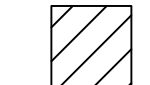


File: L:\2019\19T41011 - Whispering Lakes Phase 5\Drawings\CAD\Water09 - Erosion Control.dwg, Last Save: 8/28/2019 9:38 AM, Last saved by: CDJurey
 Last plotted by: Jurey, Caleb D., Plot Date: 8/28/2019 9:44 AM, Plotter used: None



-  MAINTAIN Silt Fence (700 L.F.)
-  MAINTAIN Construction Entrance (1 Ea.)
-  MAINTAIN Curb Inlet Protection (4 Ea.)



© 2019 GARVER, LLC
 THIS DOCUMENT, ALONG WITH THE IDEAS AND DESIGNS CONVEYED HEREIN, SHALL BE CONSIDERED INSTRUMENTS OF PROFESSIONAL SERVICE AND ARE PROPERTY OF GARVER, LLC. ANY USE, REPRODUCTION, OR DISTRIBUTION OF THIS DOCUMENT, ALONG WITH THE IDEAS AND DESIGN CONTAINED HEREIN, IS PROHIBITED UNLESS AUTHORIZED IN WRITING BY GARVER, LLC OR EXPLICITLY ALLOWED IN THE GOVERNING PROFESSIONAL SERVICES AGREEMENT FOR THIS WORK.



REV.	DATE	DESCRIPTION	BY



CITY OF WICHITA
 WICHITA, KS
 WHISPERING LAKES
 ADDITION, PHASE 5
 WATER DISTRIBUTION
 SYSTEM

Erosion Control
 Plan

JOB NO.: 19T41011
 DATE: AUG 2019
 DESIGNED BY: KWL
 DRAWN BY: CDJ

BAR IS ONE INCH ON ORIGINAL DRAWING
 IF NOT ONE INCH ON THIS SHEET, ADJUST SCALES ACCORDINGLY.

DRAWING NUMBER
 00000