

GENERAL NOTES

- THE CONTRACTOR SHALL COMPLY WITH ALL APPLICABLE SAFETY REGULATIONS. ALL CONSTRUCTION SHALL BE COMPLETED FOLLOWING CURRENT CITY STANDARD SPECIFICATIONS AND SPECIAL PROVISIONS.
- CONTRACTOR WILL BE REQUIRED TO PROVIDE NOTICE TO UTILITY COMPANIES A MINIMUM OF SEVENTY-TWO (72) HOURS PRIOR TO ANY EXCAVATION, AS FOLLOWS:
 KANSAS ONE-CALL 687-2470
 THE CONTRACTOR MUST NOTIFY THE FOLLOWING IN CASE OF AN EMERGENCY:
 AT&T 1-800-246-8464
 BLACK HILLS ENERGY (GAS) 1-800-694-8989
 CITY OF WICHITA WATER & SEWER 1-316-219-8921
 CITY OF WICHITA STORMWATER 1-316-268-4090
 CITY OF WICHITA TRAFFIC 1-316-268-4034
 COX COMMUNICATIONS 1-888-249-3530
 KANSAS GAS SERVICE 1-888-482-4950
 WESTAR ENERGY 1-800-544-4857
- UTILITY SERVICE LINES, POLES, ETC. ARE TO BE ADJUSTED AS NECESSARY BY OTHERS PRIOR TO CONSTRUCTION UNLESS THE PLANS SPECIFICALLY CALL FOR THEIR ADJUSTMENT BY THE CONTRACTOR OR UNLESS THE PLANS SPECIFICALLY IDENTIFY A UTILITY TO BE ADJUSTED BY ITS OWNER DURING CONSTRUCTION. EXISTING UTILITIES AND THEIR LOCATION, AS SHOWN ON THE PLANS, REPRESENT THE BEST INFORMATION OBTAINABLE FOR DESIGN. THE CONTRACTOR WILL BE REQUIRED TO WORK AROUND EXISTING UTILITIES WITHIN THE RIGHT-OF-WAY WHICH DO NOT CONFLICT WITH PROPOSED CONSTRUCTION.
- RUBBLE FROM THE REMOVAL OF MISCELLANEOUS STRUCTURES AND EXCESS EXCAVATION WHICH IS TO BE WASTED SHALL BE DISPOSED OF ON SITES TO BE PROVIDED BY THE CONTRACTOR. THESE SITES SHALL BE APPROVED BY THE ENGINEER AS TO SUITABILITY, APPEARANCE AND SITE LOCATION. LOCATIONS, IN THE OPINION OF THE ENGINEER, THAT WILL LEAVE AN UNSIGHTLY APPEARANCE WILL NOT BE APPROVED. ALL DISPOSAL SITES MUST BE APPROVED BY THE KANSAS DEPARTMENT OF HEALTH AND ENVIRONMENT. MATERIAL EITHER STOCKPILED OR DISPOSED OF IN A FLOOD PLAIN WILL REQUIRE A KANSAS STATE BOARD OF AGRICULTURE PERMIT. ANY MATERIAL DUMPED IN WATERS OF THE UNITED STATES OR WETLANDS IS SUBJECT TO U.S. CORPS OF ENGINEERS PERMITTING REGULATIONS. ANY MATERIAL BURIED OR STOCKPILED BEYOND APPROVED CONSTRUCTION LIMITS WILL REQUIRE ADDITIONAL ARCHAEOLOGICAL INVESTIGATIONS UNLESS BURIED IN A PREVIOUSLY APPROVED BORROW LOCATION.
- TREES AND SHRUBS IN PUBLIC RIGHT-OF-WAY WHICH ARE IN DIRECT CONFLICT WITH PROPOSED NEW CONSTRUCTION SHALL BE REMOVED BY THE CONTRACTOR WITH THE CITY ENGINEER'S APPROVAL. TREES AND SHRUBS WHICH ARE NOT IN DIRECT CONFLICT WITH PROPOSED NEW CONSTRUCTION SHALL BE SAVED AND PROTECTED FROM DAMAGE.
- THE CONTRACTOR SHALL GIVE ALL PROPERTY OWNERS AND/OR TENANTS OF DEVELOPED PROPERTY ABUTTING THE CONSTRUCTION OF THIS PROJECT A MINIMUM OF TEN (10) DAYS NOTICE PRIOR TO START OF CONSTRUCTION.
- THE CONTRACTOR SHALL BE RESPONSIBLE FOR PRESERVING PROPERTY IRONS. THE CONTRACTOR WILL BE REQUIRED TO RE-ESTABLISH ANY PROPERTY IRONS WHICH ARE DAMAGED OR DESTROYED BY HIS CONSTRUCTION OPERATIONS. SUCH IRONS SHALL BE RE-ESTABLISHED BY A LICENSED LAND SURVEYOR IN ACCORDANCE WITH STATE LAWS.
- THE ENGINEERING DIVISION SHALL FIELD LOCATE WATER VALVES ONE TIME DURING CONSTRUCTION WHEN REQUESTED BY THE CONTRACTOR. IT SHALL BE THE CONTRACTOR'S RESPONSIBILITY TO PRESERVE SUCH FIELD LOCATIONS DURING THE CONSTRUCTION PROCESS. WATER VALVES, VALVE BOXES OR FIRE HYDRANTS DAMAGED DURING CONSTRUCTION SHALL BE REPAIRED BY CONTRACTOR AT HIS OWN EXPENSE. VALVE BOXES AND WATER METERS WITHIN THE PROJECT LIMITS SHALL BE ADJUSTED TO MATCH FIELD GRADES BY THE CONTRACTOR.
- IF TRAFFIC WILL BE IMPACTED BY CONSTRUCTION, A TRAFFIC CONTROL PLAN MUST BE SUBMITTED AND APPROVED BY THE CITY TRAFFIC ENGINEER, BRIAN COON AT traffic@wichita.gov BEFORE CONSTRUCTION CAN BEGIN. THE CONTRACTOR SHALL BE RESPONSIBLE FOR ALL TRAFFIC CONTROL MEASURES TO FACILITATE CONSTRUCTION. ALL CONSTRUCTION ZONE MARKINGS AND SIGNAGE SHALL CONFORM TO THE LATEST VERSION OF THE MANUAL ON UNIFORM TRAFFIC CONTROL DEVICES (MUTCD) AS PUBLISHED BY THE US DEPT. OF TRANSPORTATION, FEDERAL HIGHWAY ADMINISTRATION. ALL COSTS ASSOCIATED WITH CONSTRUCTION MARKINGS AND SIGNAGE SHALL BE THE CONTRACTOR'S RESPONSIBILITY.
- ALL AREAS DISTURBED DURING CONSTRUCTION THAT WILL NOT BE UNDER PROPOSED PAVEMENT SHALL BE SEEDED AND MULCHED. COST SHALL BE CONSIDERED SUBSIDIARY TO PROJECT SEEDING.
- CONTRACTOR SHALL LIMIT THE EXTENT OF TRENCH OPEN OVERNIGHT AND WEEKENDS TO LESS THAN 50 FEET.
- EXISTING UTILITIES AND THEIR LOCATION, AS SHOWN ON THE PLANS REPRESENT THE BEST INFORMATION OBTAINABLE FOR DESIGN. LOCATION INFORMATION HAS BEEN OBTAINED FROM THE VARIOUS COMPANIES AND IS EITHER FROM COMPANY UTILITY DRAWINGS OR COMPANY PROVIDED FIELD LOCATIONS. THE PLAN LOCATIONS SHOWN ARE NOT GUARANTEED. ADDITIONAL EXISTING UTILITIES MAY ALSO BE ENCOUNTERED.
- A PORTION OF EXCESS EXCAVATED MATERIAL SHALL BE MOUNDED AROUND MANHOLES WHICH EXTEND MORE THAN ONE (1) FOOT ABOVE THE EXISTING GROUND. SUCH MOUND SHALL BE CONSTRUCTED WITH NEW DEVELOPMENT A SIX (6) FOOT DIAMETER FLAT TOP WITH 4 TO 1 SIDE SLOPES DOWN TO THE ORIGINAL GROUND. THE ELEVATION OF THE FLAT TOP OF THE MOUND SHALL BE 0.4 FOOT BELOW THE TOP OF THE MANHOLE.
- CONTRACTOR SHALL PROVIDE POSITIVE DRAINAGE AWAY FROM ALL MANHOLE COVERS.
- ALL STUBS AND PLUGGED PIPES SHALL BE LOCATED WITH GREEN PLASTIC TAPE IN THE SAME MANNER AS RISERS.
- CONNECTING TO EXISTING MANHOLES:
 PRIOR TO LAYING SEWER LINES USING EXISTING STUBS IN EXISTING MANHOLES, THE CONTRACTOR SHALL EXPOSE AND VERIFY THE ELEVATION, GRADE AND ALIGNMENT OF EXISTING STUBS AND NOTIFY THE ENGINEER OF ANY DEVIATION FROM THE PLANS. WHERE CONNECTION TO AN EXISTING MANHOLE THAT DOES NOT HAVE AN EXISTING STUB OR THE STUB IS UNUSABLE DUE TO ELEVATION GRADE OR ALIGNMENT, THE CONTRACTOR SHALL BORE CUT INTO EXISTING MANHOLE WALL TO MAKE CONNECTION USING APPROVED WATER STOP GASKET, AND RESHAPE THE EXISTING MANHOLE INVERT TO PROVIDE SMOOTH FLOW. THE COST TO CONNECTING TO EXISTING MANHOLES IS INCIDENTAL TO THE PROJECT.
- THE CONTRACTOR SHALL PREVENT ANY CONSTRUCTION DEBRIS FROM ENTERING THE EXISTING SANITARY SEWER DURING CONSTRUCTION.
- THE CONTRACTOR SHALL BE RESPONSIBLE FOR MAINTAINING CONTINUOUS FLOW OF SEWAGE THROUGH CONSTRUCTION. CONTRACTOR'S PROPOSED METHOD FOR MAINTAINING SEWAGE FLOW SHALL BE SUBMITTED AND APPROVED BY THE SEWER MAINTENANCE DIVISION (316-268-4073) PRIOR TO STARTING AND BY-PASSING OF SEWAGE FLOWS.
- ALL TRAFFIC CONTROL DEVICES IN THE WORK ZONE (INCLUDING MARKINGS AND SIGNS) AND THEIR INSTALLATION AND MAINTENANCE SHALL COMPLY WITH THE LATEST EDITION OF THE MANUAL ON UNIFORM TRAFFIC CONTROL DEVICES (MUTCD). ALL TRAFFIC CONTROL DEVICES IN THE TRAVELED WAY OR CLEAR ZONE SHALL BE CRASHWORTHY (NCHRP REPORT 350 OR MASH COMPLIANT).
<https://safety.fhwa.dot.gov/roadwaydeptpolicy/guides/roadhardwarewd/>
- ALL CONSTRUCTION EQUIPMENT, INCLUDING VEHICLES, MATERIALS, AND DEBRIS, SHALL BE STORED OUTSIDE OF THE CLEAR ZONE. WHERE THIS CANNOT BE ACHIEVED THE CONTRACTOR SHALL PLACE APPROPRIATE SIGNS, OBJECT IDENTIFIERS, AND/OR BARRICADES IN COMPLIANCE WITH MUTCD.
- EXCEPT WHEN REQUIRED FOR SAFETY, TRAFFIC CONTROL SHALL NOT BLOCK ANY LANES OR SIDEWALKS WHEN WORK IS NOT BEING PERFORMED.
- FOLLOW THE LINK BELOW FOR DETAILS ON SPECIFIC CITY OF WICHITA STANDARD DETAILS:
<http://www.wichita.gov/PWUPages/Regulations.aspx>
- DEVELOPER FOR THIS PROJECT IS:
 RITCHIE ASSOCIATES, INC.
 8100 E. 22nd ST. N., BLDG 1000
 WICHITA, KANSAS, 67226
 KEVIN MULLEN
 316-684-7300 EXT. 103

SANITARY SEWER

TO SERVE

AUBURN LAKES ADDITION

LATERAL 72, COWSKIN INTERCEPTOR

PROJECT NO. 468-85305

THE CITY OF WICHITA, KANSAS

GARY JANZEN, P.E. - CITY ENGINEER

OCA NO. 744476

Dondlinger - Contractor

B. Woods - City of Wichita, Field Project Engineer

T. Dvorak - City of Wichita, Inspector

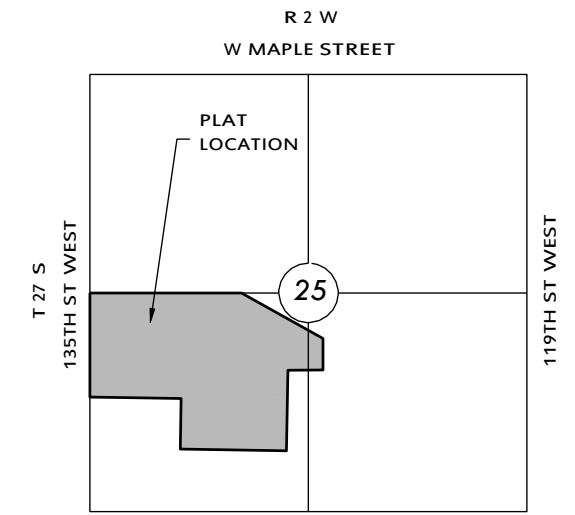
As-built

Stubs & Risers

Release Date: 1/15/2019 (for connection purposes only)

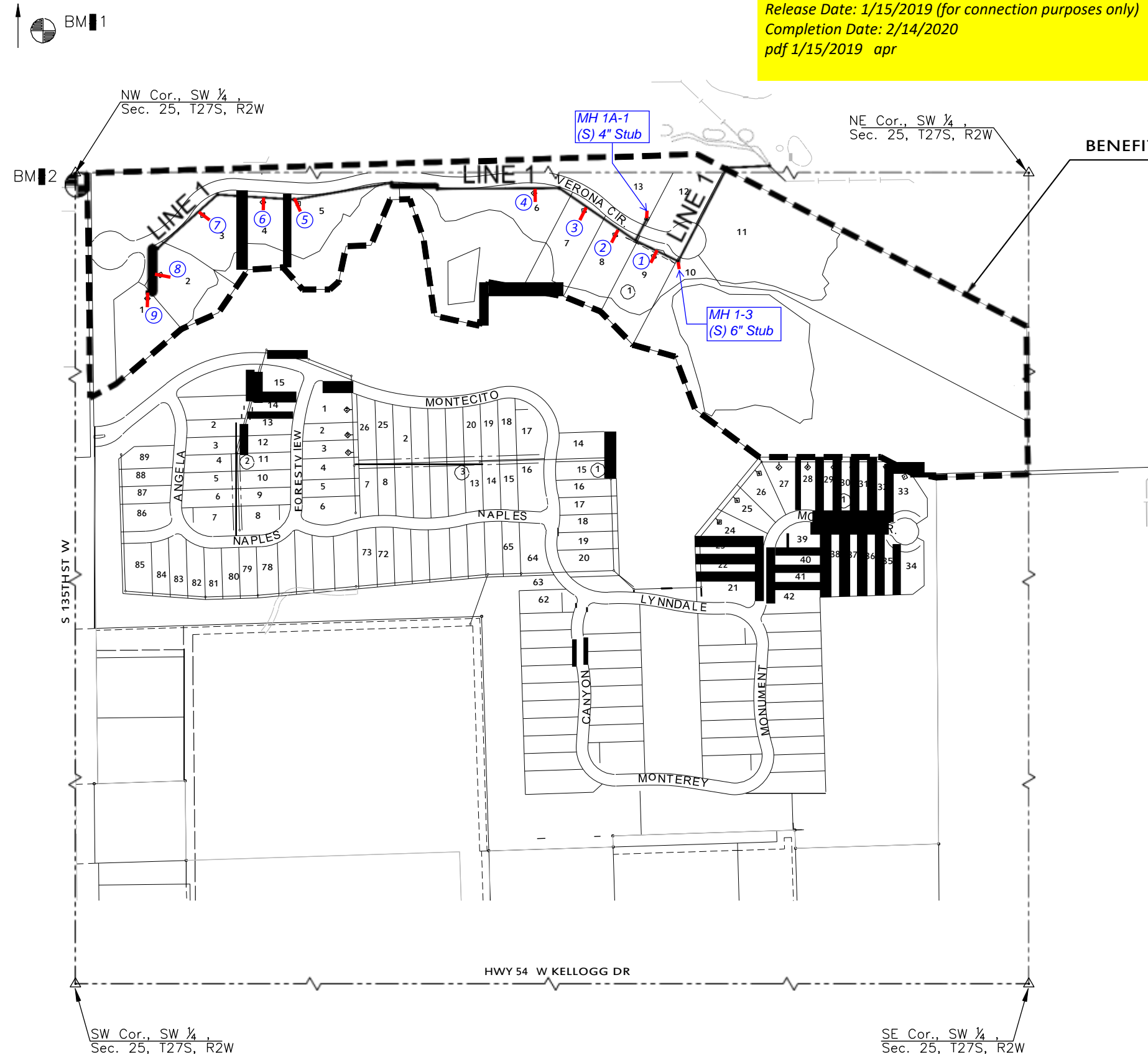
Completion Date: 2/14/2020

pdf 1/15/2019 apr



VICINITY MAP

No Scale

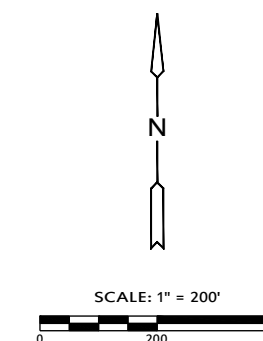


INDEX TO DRAWINGS

SHEET NO.	DESCRIPTION
01	TITLE SHEET
02-04	DETAILS
05-07	LINE 3 & 3A
08	BUBBLE MAP
09-13	BMP SHEETS
14-18	FINAL PLAT

BENCHMARKS

- BM1 SQUARE CUT ON EAST NOSE OF CENTER ISLAND, 50 FEET WEST OF 135TH STREET WEST AND ONEWOOD STREET INTERSECTION. ELEV.=1350.35 NAVD88
- BM2 SQUARE CUT ON NORTHEAST CORNER CURB INLET, EAST SIDE OF 135TH STREET WEST, 33 FEET SOUTH OF NW 14, SEC. 25, T27S, R2W OF THE 6TH P.M. ELEV.=1346.29 NAVD88



SANITARY SEWER PLANS FOR
AUBURN LAKES ADDITION
 PHASE 2

©2018
 MKEC Engineering
 All Rights Reserved
 www.mkec.com
 These drawings and their contents, including, but not limited to, all concepts, designs, & ideas are the exclusive property of MKEC Engineering (MKEC), and may not be used or reproduced in any way without the express consent of MKEC.

TITLE

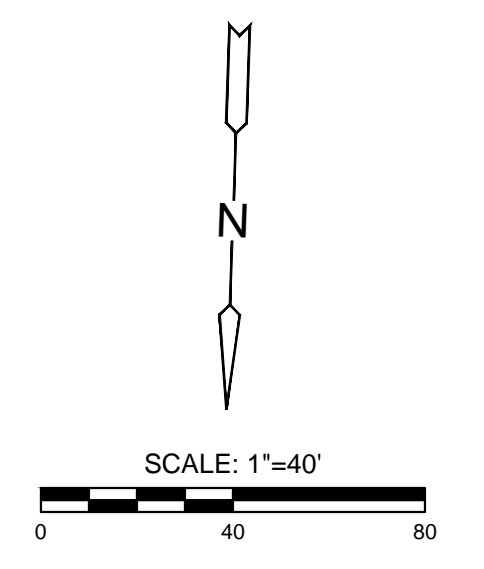
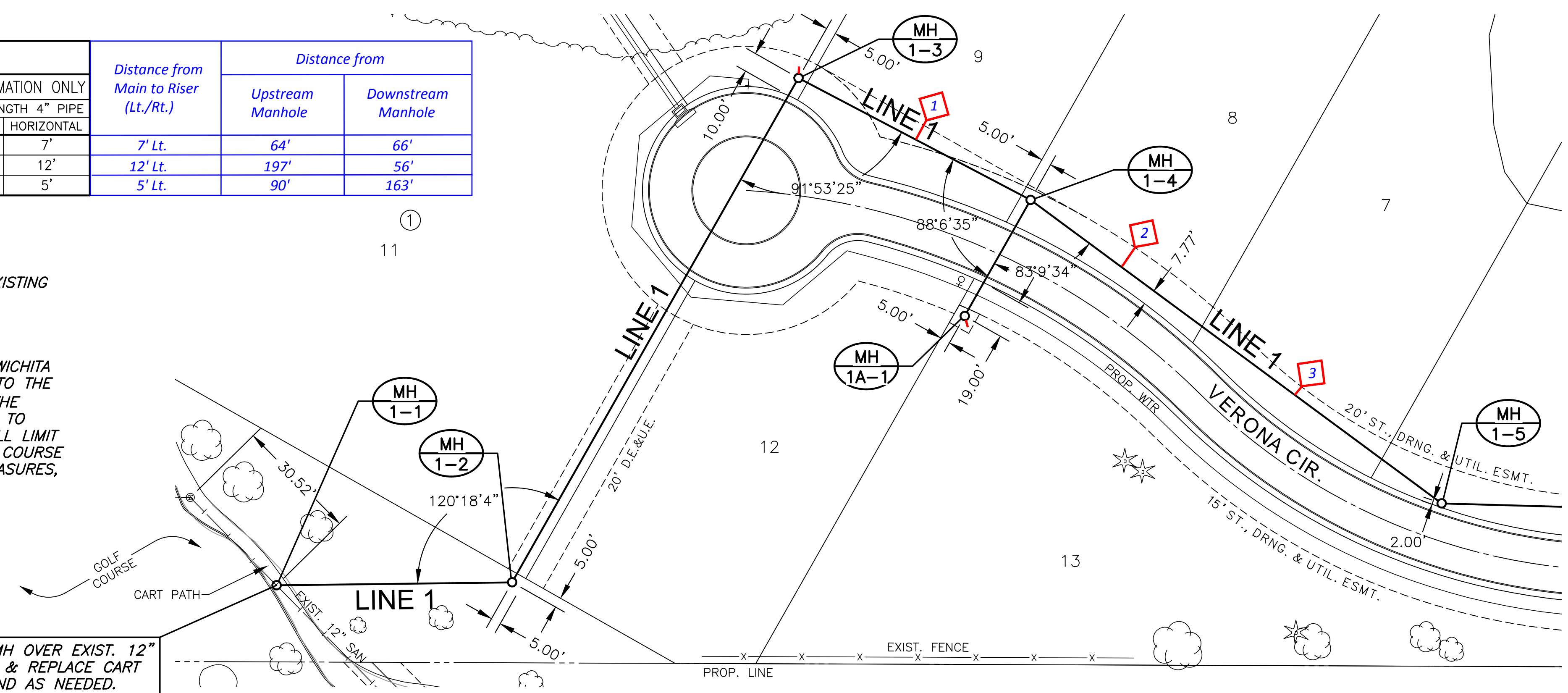
PROJECT NO.	468-85304	
DATE	APRIL 2018	
SCALE	1" = 200'	
DESIGNED	DRAWN	CHECKED
DFL	RWB	GJA
NO.	REVISION	DATE
SHEET NO.		
01 OF 18		

J:\PROJECTS\2018\1601010221 - PERFECTION, AUBURN LAKES, 16221 CADSHIT505 CIVILSANPHASE 2\16221-05-2212.DWG
 PLOTTED: Wednesday, May 23, 2018 @ 08:47AM

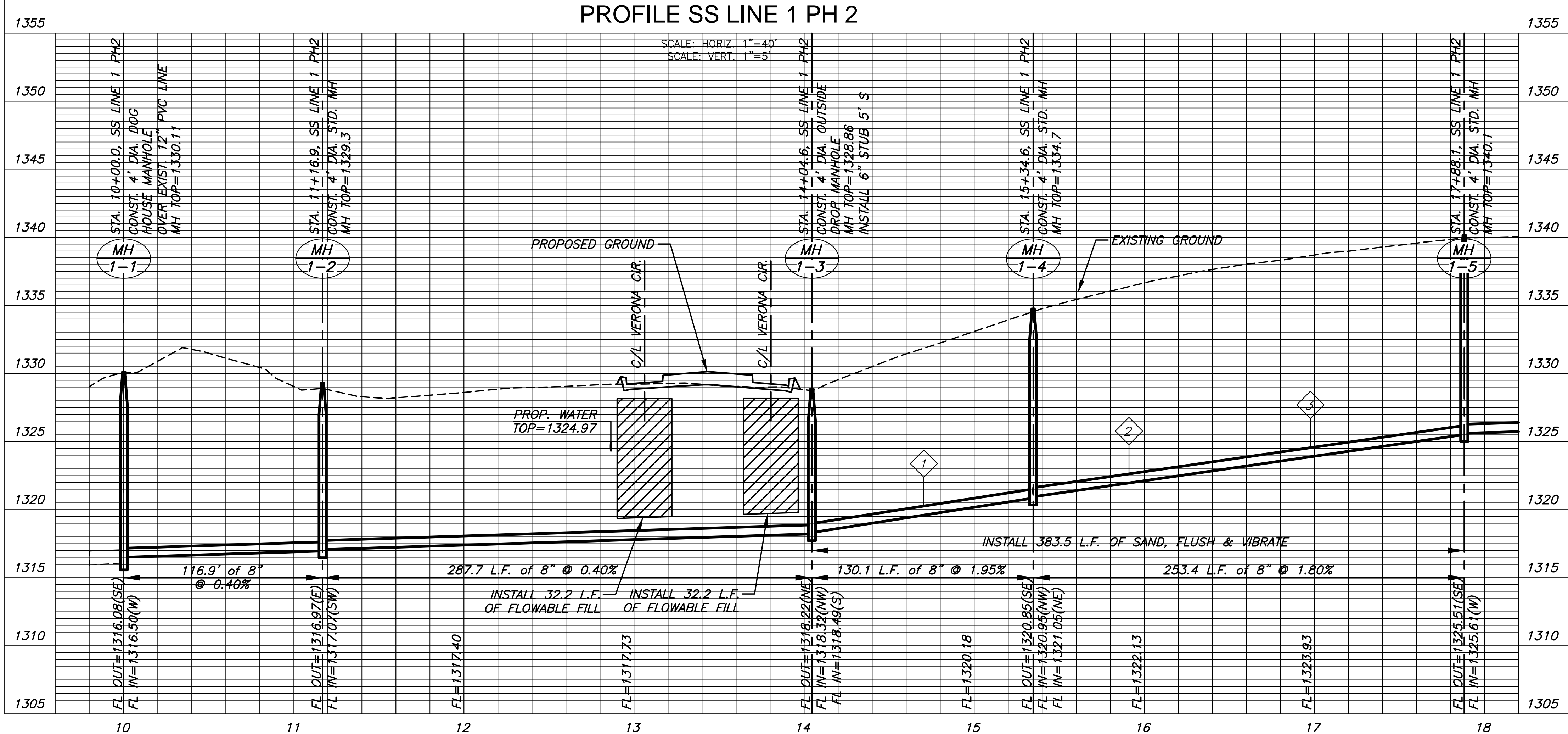
SEWER SERVICE TABLE							Distance from Main to Riser (Lt./Rt.)	Distance from	
NO.	TYPE	LOT NO.	BLOCK	LINE NO.	STATION/ DIRECTION	APPROX. LENGTH 4" PIPE VERTICAL HORIZONTAL		Upstream Manhole	Downstream Manhole
1	TEE SERVICE CONNECTION	9	1	1	14+70.36	10' 7'	7' Lt.	64'	66'
2	TEE SERVICE CONNECTION	8	1	1	15+90.99	12' 12'	12' Lt.	197'	56'
3	TEE SERVICE CONNECTION	7	1	1	16+97.62	12' 5'	5' Lt.	90'	163'

- NOTES:**
- CONTRACTOR TO VERIFY THE DEPTH AND LOCATION OF EXISTING UTILITIES PRIOR TO CONSTRUCTION.
 - SEE GRADING PLANS FOR TREE REMOVAL.
 - CONTRACTOR SHALL COORDINATE THROUGH THE CITY OF WICHITA ENGINEERING DEPARTMENT TO PROVIDE 20 DAYS NOTICE TO THE CITY'S AUBURN HILLS GOLF COURSE SUPERINTENDENT. THE CONTRACTOR SHALL BE AVAILABLE TO MEET IN THE FIELD TO REVIEW WORK ON THE GOLF COURSE. CONTRACTOR SHALL LIMIT INTERRUPTION TIME AND PHYSICAL DAMAGE TO THE GOLF COURSE OPERATION. TEMPORARY CART PATH DETOUR, SAFETY MEASURES, RESTORATION, ETC SHALL BE SUBSIDIARY TO PROJECT.

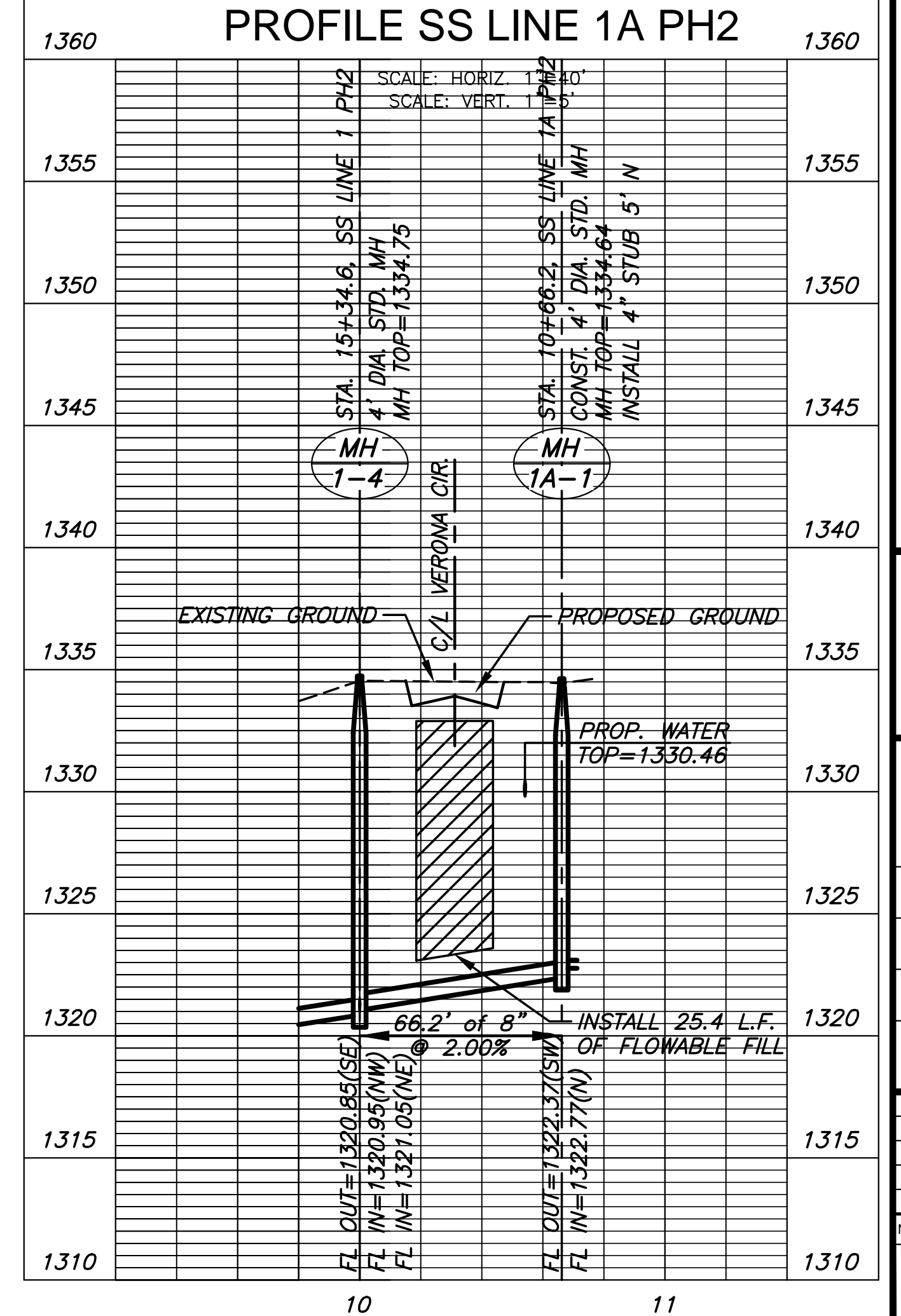
TO INSTALL SS MH OVER EXIST. 12" PVC LINE. DEMO & REPLACE CART PATH IN LIKE KIND AS NEEDED. COST SUBSIDIARY TO SITE CLEARING



PLAN SS LINE 1 PH2
PROFILE SS LINE 1 PH2



PLAN SS LINE 1A PH2
PROFILE SS LINE 1A PH2



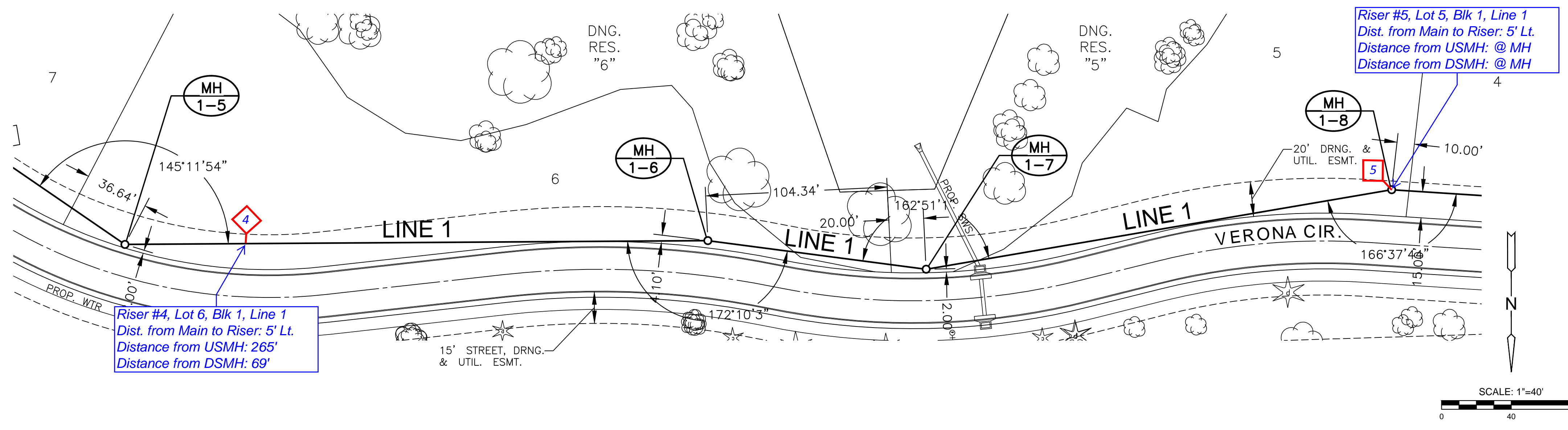
SANITARY SEWER PLANS FOR
AUBURN LAKES ADDITION
 PHASE 2

©2018
 MKEC Engineering
 All Rights Reserved
 www.mkec.com
 These drawings and their contents, including, but not limited to, all concepts, designs, & ideas are the exclusive property of MKEC Engineering (MKEC), and may not be used or reproduced in any way without the express consent of MKEC.

LINE 1	
PROJECT NO.	468-85304
DATE	APRIL 2018
SCALE	1" = 40'
DESIGNED	DRAWN
DFL	RWB
CHECKED	GJA
NO.	REVISION
DATE	
SHEET NO.	
05 OF 18	

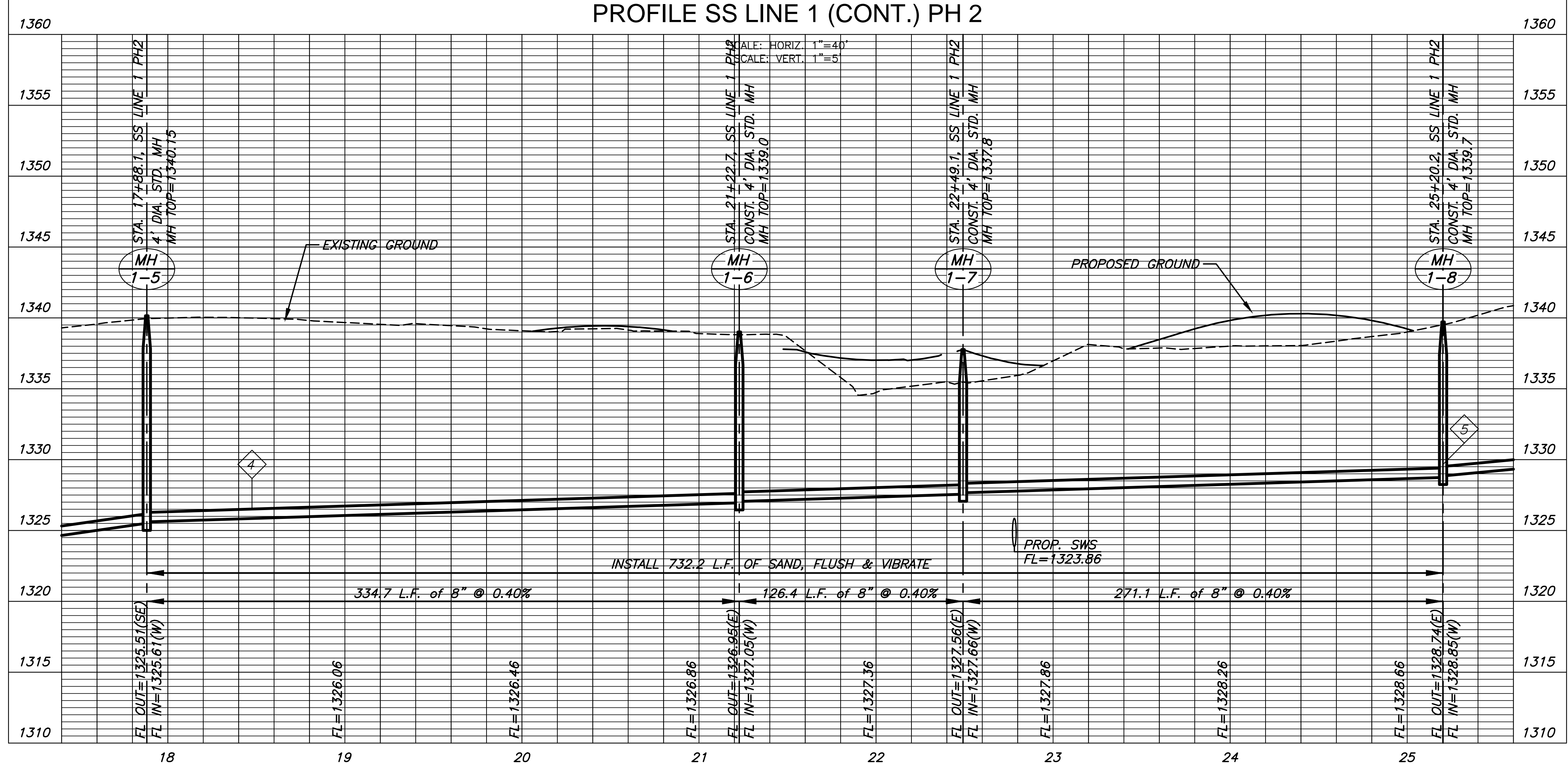
PLOTTED: Monday, May 21, 2018 @ 10:35AM

SEWER SERVICE TABLE							
NO.	TYPE	LOCATION			FOR INFORMATION ONLY		
		LOT NO.	BLOCK	LINE NO.	STATION/DIRECTION	APPROX. LENGTH 4" PIPE	
					VERTICAL	HORIZONTAL	
4	TEE SERVICE CONNECTION	6	1	1	18+57.41	11'	5'
5	MH CONNECTION	5	1	1	25+20.20	8'	5'



NOTES:
1. CONTRACTOR TO VERIFY THE DEPTH AND LOCATION OF EXISTING UTILITIES PRIOR TO CONSTRUCTION.
2. SEE GRADING PLANS FOR TREE REMOVAL.

PLAN SS LINE 1 (CONT.) PH 2
PROFILE SS LINE 1 (CONT.) PH 2



SANITARY SEWER PLANS FOR
AUBURN LAKES ADDITION
 PHASE 2

©2018 MKEC Engineering All Rights Reserved
 These drawings and their contents, including, but not limited to, all concepts, designs, & ideas are the exclusive property of MKEC Engineering (MKEC), and may not be used or reproduced in any way without the express consent of MKEC.

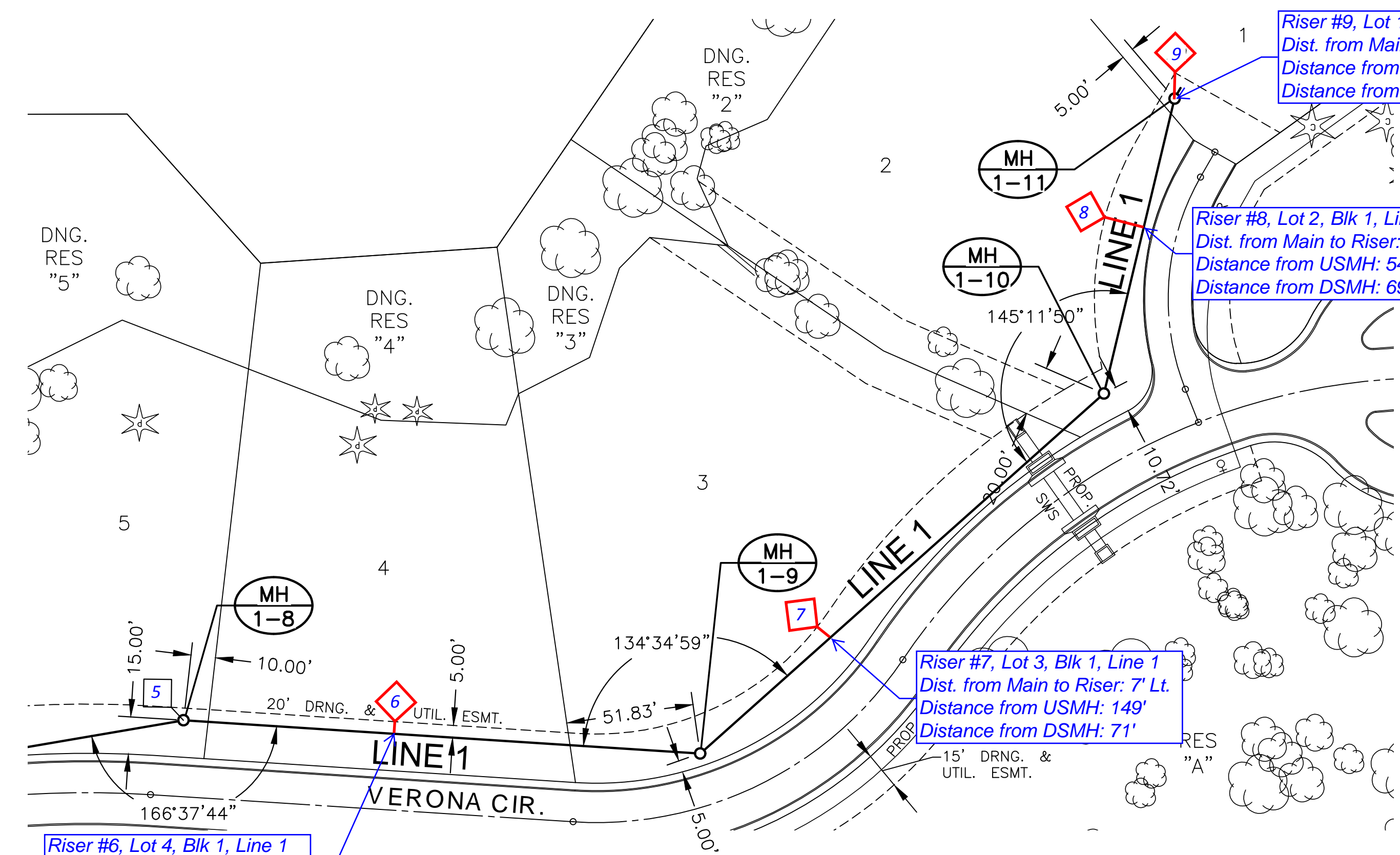
LINE 1 (CONT.)

PROJECT NO.	468-85304	
DATE	APRIL 2018	
SCALE	1" = 40'	
DESIGNED	DRAWN	CHECKED
DFL	RWB	GJA

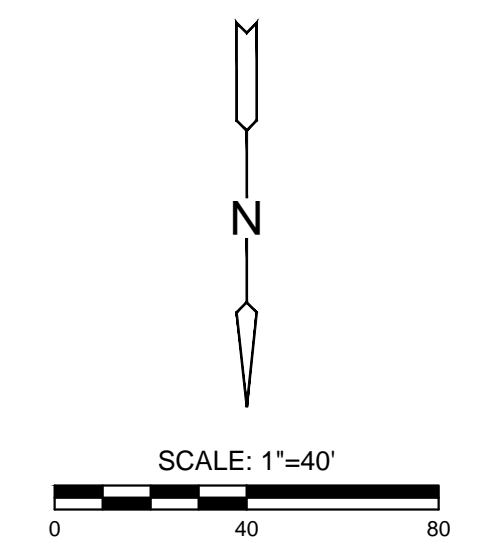
NO.	REVISION	DATE

J:\PROJECTS\2018\1601010221 - PERFECTION, AUBURN LAKES - 16221 CAD\SS\1505 CIVIL\SS\PHASE 2\16221-05-2213.DWG

J:\PROJECTS\2018\1601010221 - PERFECTION, AUBURN LAKES - 16221 CAD\SS\PHASE 2\16221-05-2214.DWG
 PLOTTED: Monday, May 21, 2018 @ 10:37AM

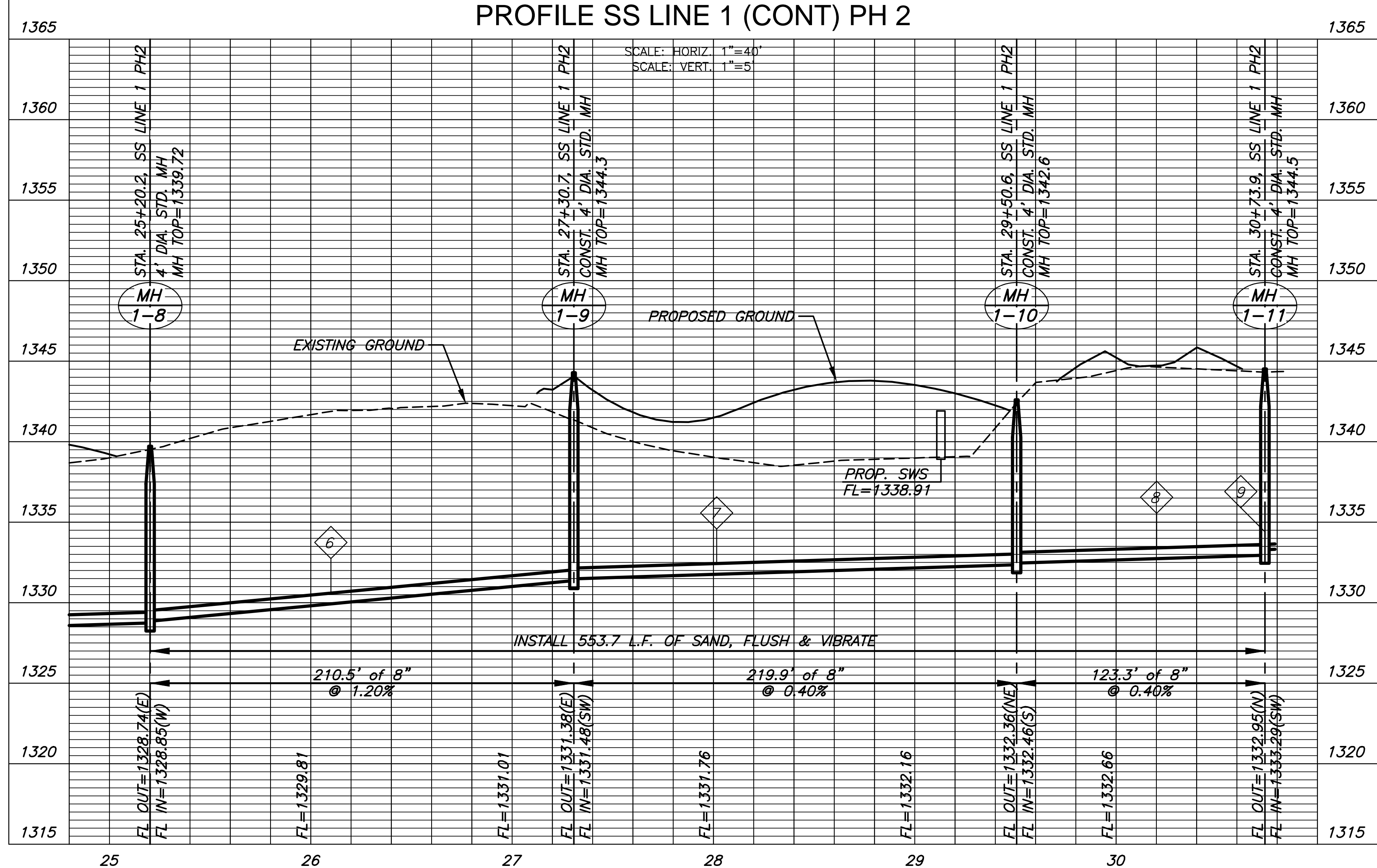


SEWER SERVICE TABLE							
NO.	TYPE	LOCATION			FOR INFORMATION ONLY		
		LOT NO.	BLOCK	LINE NO.	STATION/DIRECTION	APPROX. LENGTH 4" PIPE	
					VERTICAL	HORIZONTAL	
6	TEE SERVICE CONNECTION	4	1	1	26+05.97	9'	5'
7	TEE SERVICE CONNECTION	3	1	1	28+01.62	7'	7'
8	TEE SERVICE CONNECTION	2	1	1	30+20.16	9'	16'
9	MH CONNECTION	1	1	1	30+73.90	9'	5'



- NOTES:**
- CONTRACTOR TO VERIFY THE DEPTH AND LOCATION OF EXISTING UTILITIES PRIOR TO CONSTRUCTION.
 - SEE GRADING PLANS FOR TREE REMOVAL.

PLAN SS LINE 1 (CONT) PH 2
PROFILE SS LINE 1 (CONT) PH 2



SANITARY SEWER PLANS FOR
AUBURN LAKES ADDITION
 PHASE 2

©2018 MKEC Engineering All Rights Reserved
 These drawings and their contents, including, but not limited to, all concepts, designs, & ideas are the exclusive property of MKEC Engineering (MKEC), and may not be used or reproduced in any way without the express consent of MKEC.

LINE 1 (CONT)

PROJECT NO.	468-85304	
DATE	APRIL 2018	
SCALE	1" = 40'	
DESIGNED	DRAWN	CHECKED
DFL	RWB	GJA

NO.	REVISION	DATE