

SANITARY SEWER EXTENSION

to serve

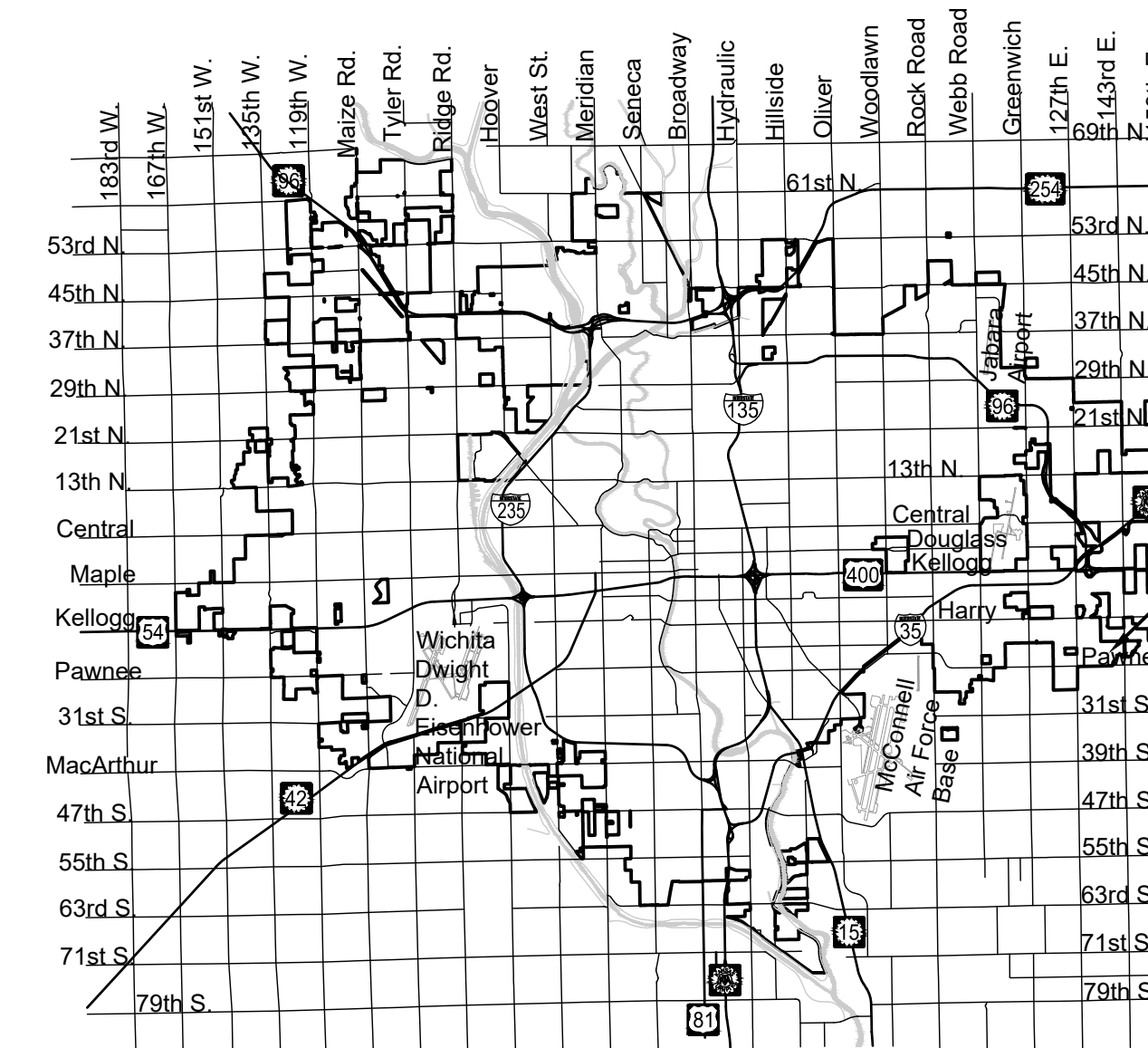
Sierra Hills 2nd - Phase 4 CITY OF WICHITA, KANSAS

Gary Janzen, P.E. City Engineer

Project Number 468-85338

O.C.A. NO. 744479

Lateral 9, Main 21, Four Mile Creek



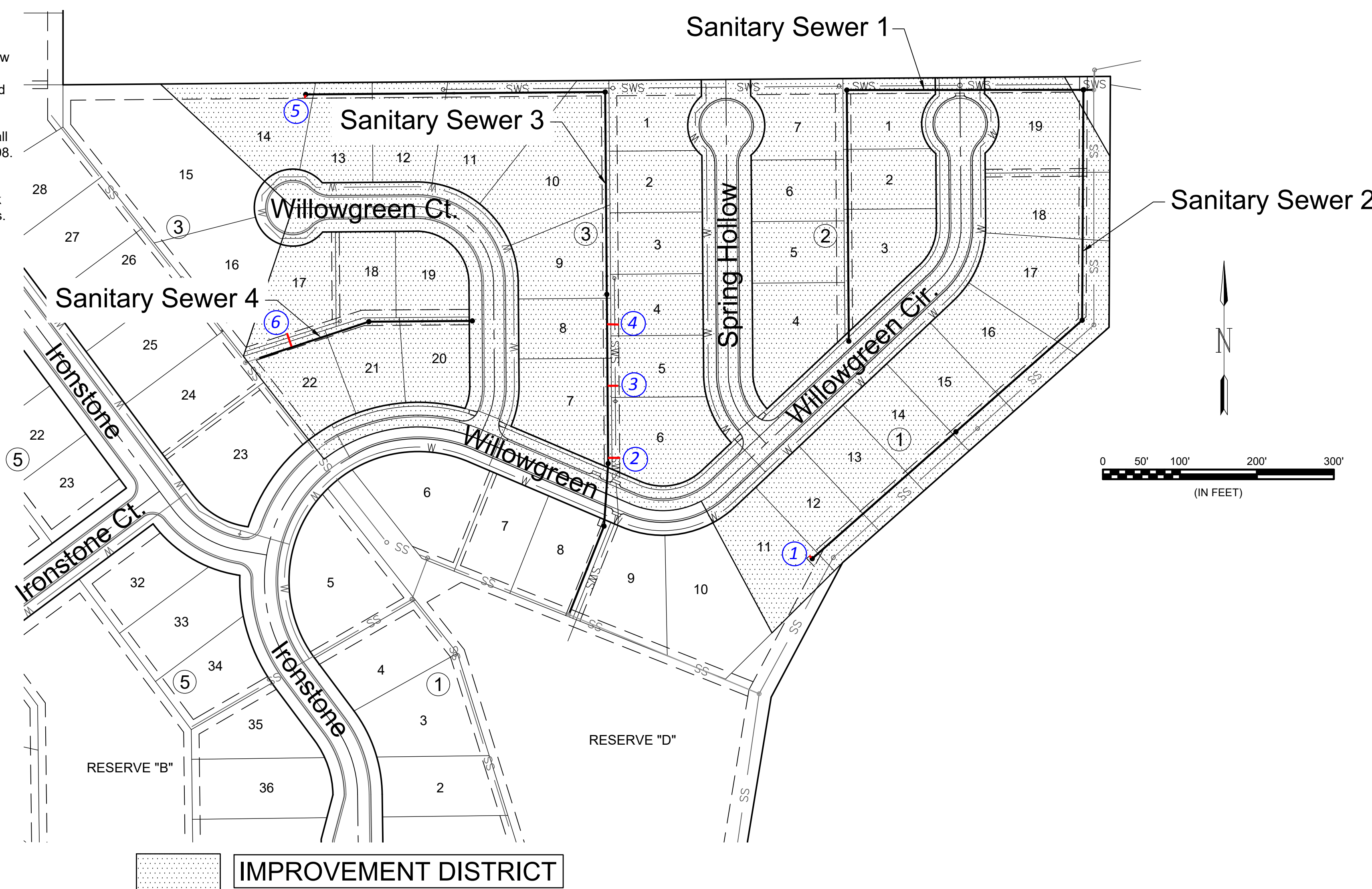
Vicinity Map

PROJECT LOCATION



Digitally Signed 09/07/2018

McCullough Excavation - Contractor
K. Yale - City of Wichita, Field Project Engineer
J. Smith - City of Wichita, Field Project Engineer
As-built
Stubs & Risers
Release Date: 5/17/2019 (for connection purposes only)
Completion Date: 9/24/2019
pdf: 5/20/2019 apr



Sheet Index	
Sheet	Title
1	SS Titlesheet
2	Pre-Cast SS MH
3	MH Frame & Cover
4	Vertical Riser
5	Sanitary Sewer 1
6	Sanitary Sewer 2
7	Sanitary Sewer 3 - 1
8	Sanitary Sewer 3 - 2
9	Sanitary Sewer 4
10	Bubble Map
11	Point Table
12	Erosion Control Plan
13	BOC
14	Silt Fc
15	Straw Bale
16	SIP
17	SDP
18	Final Plat

GENERAL NOTES:

- The Contractor shall comply with all applicable safety regulations. All construction shall be completed following current City Standard Specifications and Special Provisions.
- Contractor will be required to provide notice to utility companies a minimum of seventy-two (72) hours prior to any excavation, as follows:

Kansas One-Call 687-2470

The Contractor must notify the following in case of an emergency:

AT&T 1-800-246-8464
Black Hills Energy 1-800-694-8989
City of Wichita Water & Sewer Dept. 1-316-219-8921
City of Wichita Stormwater 1-316-268-4090
City of Wichita Traffic 1-316-268-4034
Cox Communications 1-888-249-3530
Kansas Gas Service 1-888-482-4950
Unified School District 259 1-316-973-2244
Westar Energy 1-800-544-4857
- Utility service lines, poles, etc. are to be adjusted as necessary by others prior to construction unless the plans specifically call for their adjustment by the Contractor or unless the plans specifically identify a utility to be adjusted by its owner during construction. Existing utilities and their location, as shown on the plans, represent the best information obtainable for design. The Contractor will be required to work around existing utilities within the right-of-way which do not conflict with proposed construction.
- Rubble from the removal of miscellaneous structures and excess excavation which is to be wasted shall be disposed of on sites to be provided by the Contractor. These sites shall be approved by the Engineer as to suitability, appearance and site location. Locations, in the opinion of the Engineer, that will leave an unsightly appearance will not be approved. All disposal sites must be approved by the Kansas Department of Health and Environment. Material either stockpiled or disposed of in a flood plain will require a Kansas State Board of Agriculture permit. Any material dumped in waters of the United States or wetlands is subject to U.S. Corps. of Engineers permitting regulations. Any material buried or stockpiled beyond approved construction limits will require additional archaeological investigations unless buried in a previously approved borrow location.
- Trees and shrubs in public right-of-way which are in direct conflict with proposed new construction shall be removed by the Contractor with the Engineer's approval. Trees and shrubs which are not in direct conflict with proposed new construction shall be saved and protected from damage.
- The Contractor shall give all property owners and/or tenants of developed property abutting the construction of this project a minimum of ten (10) days notice prior to start of construction.
- The Contractor shall be responsible for preserving property irons. The Contractor will be required to re-establish any property irons which are damaged or destroyed by his construction operations. Such irons shall be re-established by a licensed land surveyor in accordance with state laws.
- If traffic will be impacted by construction, a traffic control plan must be submitted and approved by the City Traffic Engineer, Brian Coon at traffic@wichita.gov before construction can begin. The Contractor shall be responsible for all traffic control measures to facilitate construction. All construction zone markings and signage shall conform to the latest version of the Manual on Uniform Traffic Control Devices (MUTCD) as published by the US Dept. of Transportation, Federal Highway Administration. All costs associated with construction markings and signage shall be the Contractors responsibly.
- All elevations shown are NAVD 88.
- All areas disturbed during construction that will not be under proposed pavement shall be restored to match existing conditions.

- The Contractor shall protect from damage and support existing utilities through constructions as approved by the utility owner and the Engineer at the contractors expense.
- Contractor shall limit the extent of trench openings overnight and weekends to less than 50 feet.
- Any sidewalk, drive approach, curb, or street pavement removed to construct project must have a pavement cut permit and be replaced by the City contractor. Permits can be obtained by calling 316-268-4501 or 316-268-4480.
- All stubs and plugged pipes shall be located with green plastic tape in the same manner as risers.
- Connecting to Existing Manholes:

Prior to laying sewer lines using existing stubs in existing manholes, the Contractor shall expose and verify the elevation, grade and alignment of existing stubs and notify the Engineer of any deviation from the plans. Where connection to an existing manhole that does not have an existing stub or the stub is unusable due to elevation grade or alignment, the Contractor shall bore cut into existing manhole wall to make connection using approved water stop gasket, and reshape the existing manhole invert to provide smooth flow. The cost to connecting to existing manholes is incidental to the project.
- Contractor shall provide positive drainage away from all manhole covers.
- The Contractor shall prevent any construction debris from entering the existing sanitary sewer during construction.
- The Contractor shall be responsible for maintaining continuous flow of sewage through construction. Contractors proposed method for maintaining sewage flow shall be submitted and approved by the Sewer Maintenance Division (316-268-4073) prior to starting and by-passing of sewage flows.
- Any over excavation from manhole and pipe removal shall be backfilled with AB-3 compacted to 90-95% ASTM D698.
- No shrink or swell factors have been applied to the earthwork quantities shown on this project. All earthwork quantities are based on raw surface volume comparisons.
- Excess dirt generated from installation of underground utilities is to remain on site and be stockpiled on Lots 15-17, Block 1.

Benchmarks

BENCHMARK #1
 CHISELED SQUARE ON THE TOP OF CURB AT THE EAST SIDE OF A CURB INLET ON THE SOUTH SIDE OF STAMPEDE 200' E OF THE CENTERLINE OF 127TH ST. E
 ELEVATION = 1340.83' (NAVD88, G12A)

BENCHMARK #2
 CHISELED SQUARE ON THE TOP OF CURB ON THE SOUTH END OF THE MEDIAN OF IRONSTONE, 55' N OF THE CENTERLINE OF PAWNEE, SIERRA HILLS, 2ND ADDITION
 ELEVATION = 1320.03 (NAVD88, G12A)



September 2018

PLANS PREPARED BY

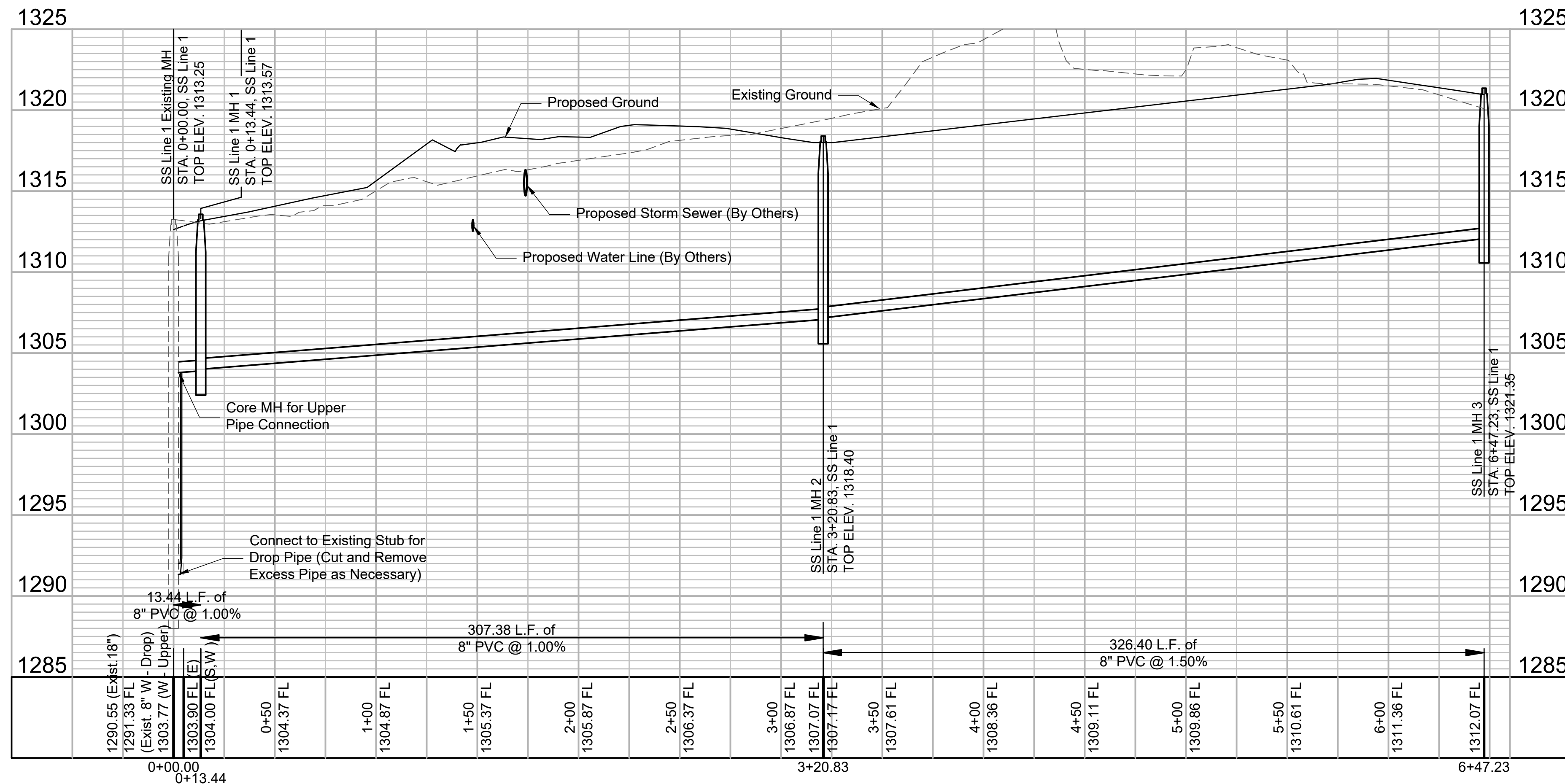
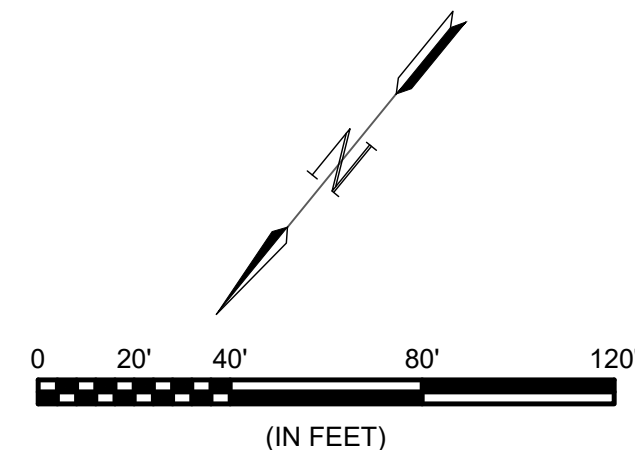
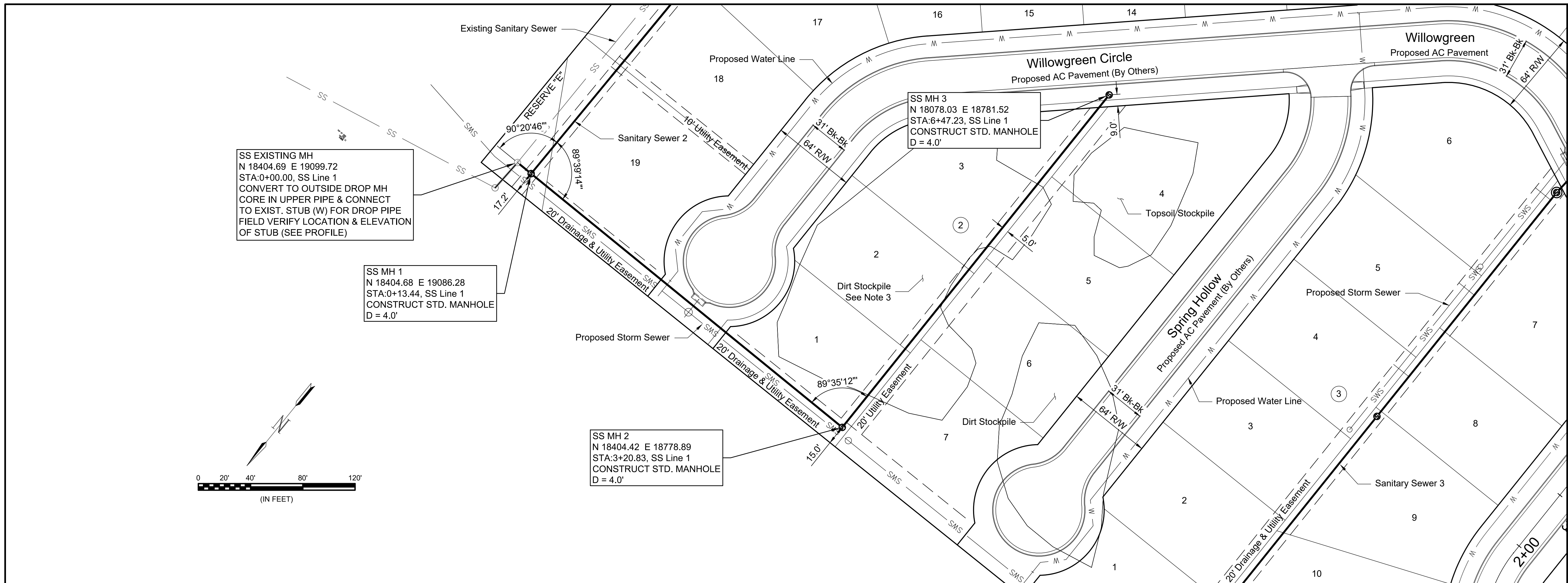




© 2018 GARVER, LLC
 THIS DOCUMENT, ALONG WITH THE IDEAS AND DESIGNS CONVEYED HEREIN, SHALL BE CONSIDERED INSTRUMENTS OF PROFESSIONAL SERVICE AND ARE PROPERTY OF GARVER, LLC. ANY USE, REPRODUCTION, OR DISTRIBUTION OF THIS DOCUMENT, ALONG WITH THE IDEAS AND DESIGN CONTAINED HEREIN, IS PROHIBITED UNLESS AUTHORIZED IN WRITING BY GARVER, LLC OR EXPLICITLY ALLOWED IN THE GOVERNING PROFESSIONAL SERVICES AGREEMENT FOR THIS WORK.

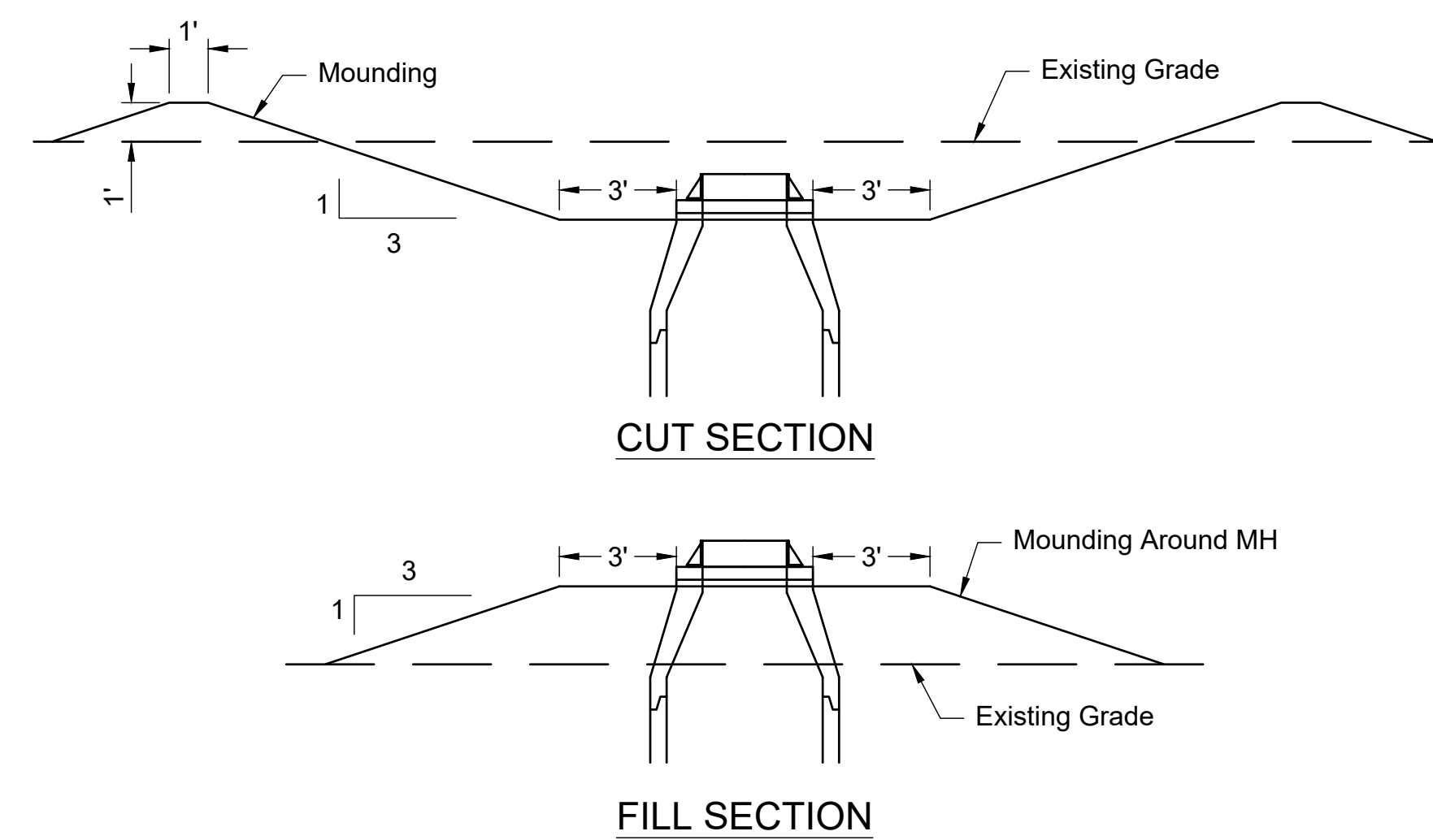


Digitally Signed 09/07/2018



NOTES

- Contractor to grade around manholes and cleanouts as shown on the detail on this sheet. Grading subsidiary to manholes and cleanouts.
- Contractor to provide temporary grading around manholes to ensure no ponding or damming of water until site grading is completed.
- Excess soil from trenching through dirt stockpiles may be placed on lots 5-7, Block 2. Dirt stockpile shall not be mixed or placed adjacent to the topsoil stockpile generally located on Lot 4. Cost of moving of dirt stockpiles due to constructions of sanitary sewer will be subsidiary to sanitary sewer pipe.



MANHOLE BACKFILL/GRADING DETAILS

REV.	DATE	DESCRIPTION	BY



CITY OF WICHITA
 WICHITA, KANSAS
 SIERRA HILLS 2nd ADD.
 PHASE 4 - SS

Sanitary Sewer 1

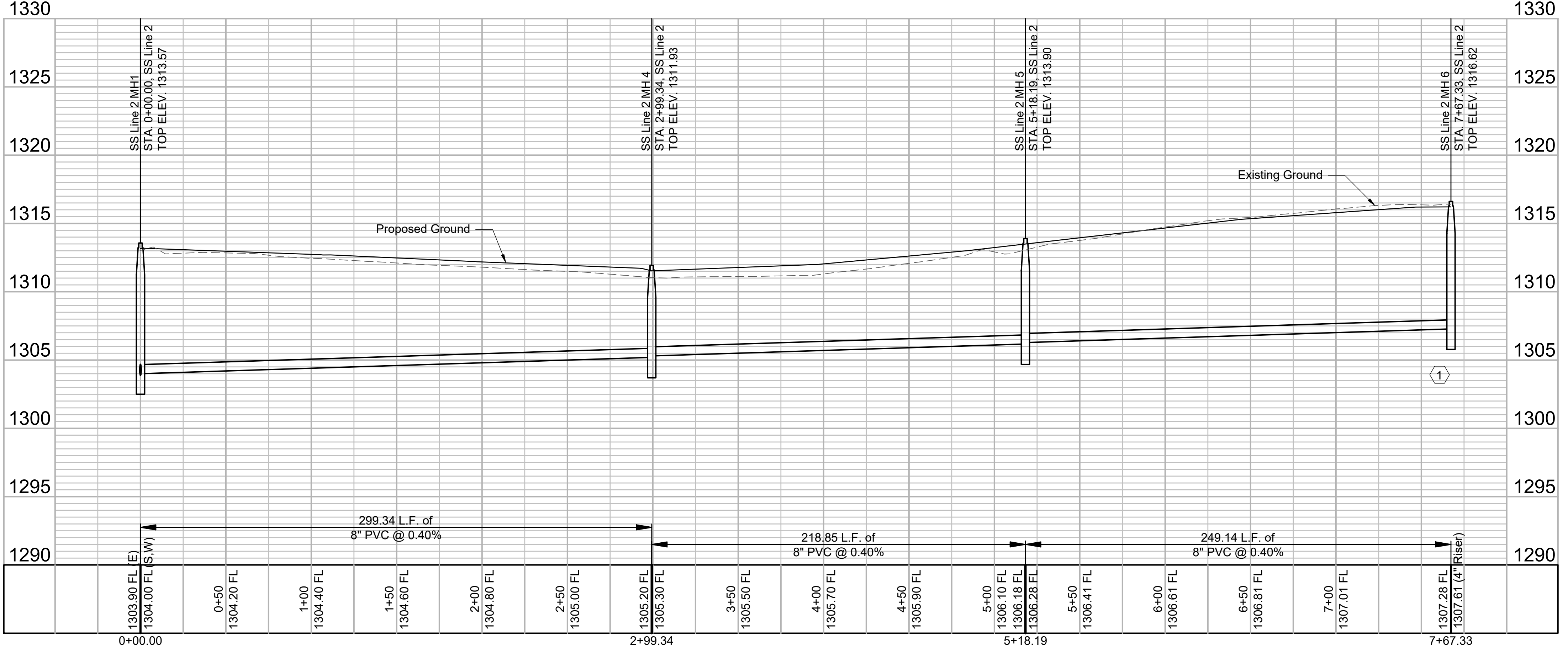
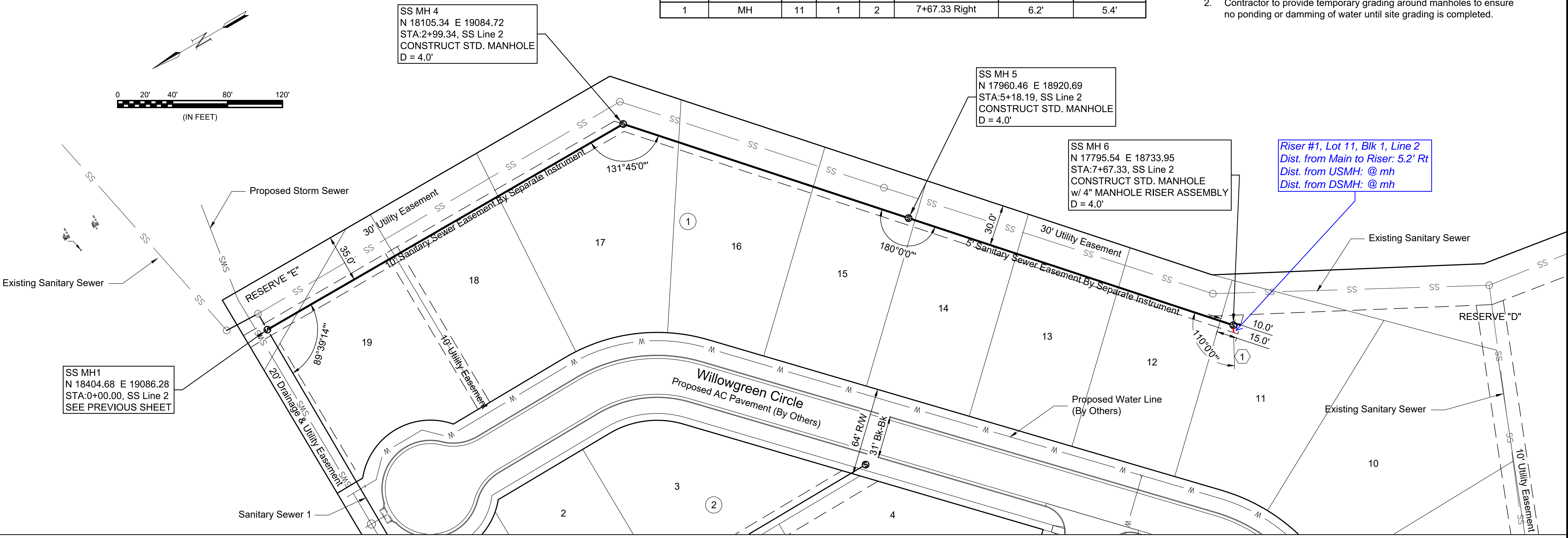
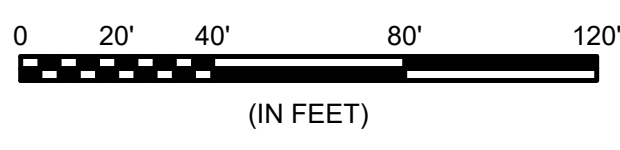
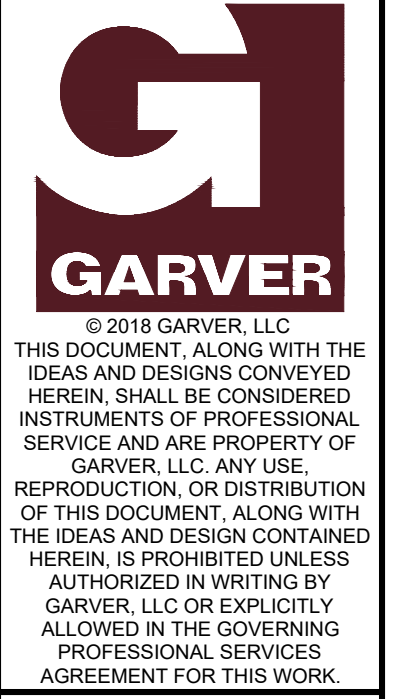
JOB NO.: 18267013
 DATE: SEP 2018
 DESIGNED BY: MTD
 DRAWN BY: CDJ

BAR IS ONE INCH ON ORIGINAL DRAWING
 0 1" IF NOT ONE INCH ON THIS SHEET, ADJUST SCALES ACCORDINGLY.

DRAWING NUMBER

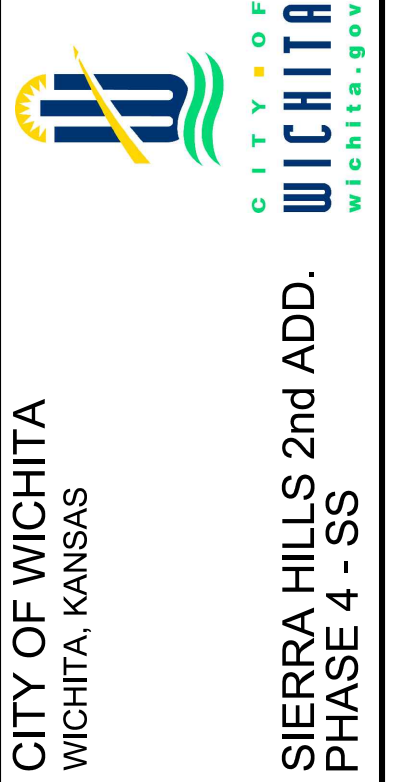
SEWER SEVICE RISER TABLE							
NUMBER	TYPE	SERVING			STATION/DIRECTION	FOR INFORMATION ONLY	
		LOT NO.	BLOCK NO.	LINE NO.		APPROX. LENGTH 4" PIPE	VERTICAL
1	MH	11	1	2	7+67.33 Right	6.2'	5.4'

- NOTES
- Contractor to grade around manholes and cleanouts as shown on the detail on Sheet No. 5. Grading subsidiary to manholes and cleanouts.
 - Contractor to provide temporary grading around manholes to ensure no ponding or damming of water until site grading is completed.



File: L:\2018\18267013 - Sierra Hills 2nd Phase 4\Drawings\C3D\SS\Sanitary Sewer 2.dwg, Last Saved: 9/7/2018 9:57 AM, Last saved by: MTDolechek, Last plotted by: Dolechek, Mark T., Plot Style: ---, Plot Scale: 1:2,500, Plot Date: 9/7/2018 11:11 AM, Plotter used: None

REV.	DATE	DESCRIPTION	BY



CITY OF WICHITA
WICHITA, KANSAS

SIERRA HILLS 2nd ADD.
PHASE 4 - SS

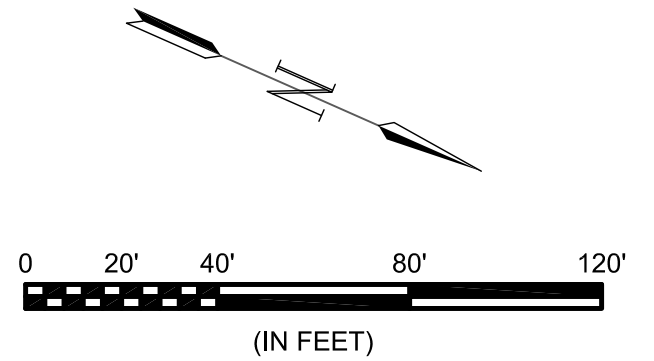
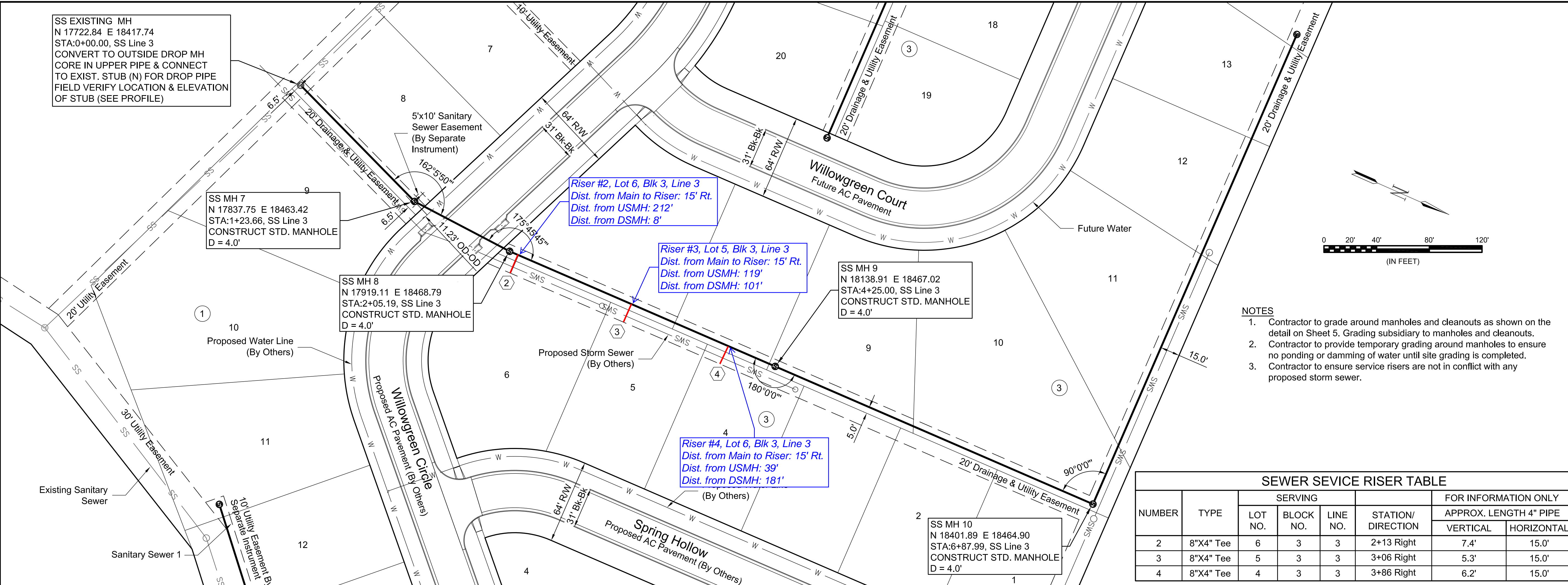
Sanitary Sewer 2

JOB NO.: 18267013
DATE: SEP 2018
DESIGNED BY: MTD
DRAWN BY: CDJ

BAR IS ONE INCH ON ORIGINAL DRAWING
0" = 1" (NOT ONE INCH ON THIS SHEET, ADJUST SCALES ACCORDINGLY)

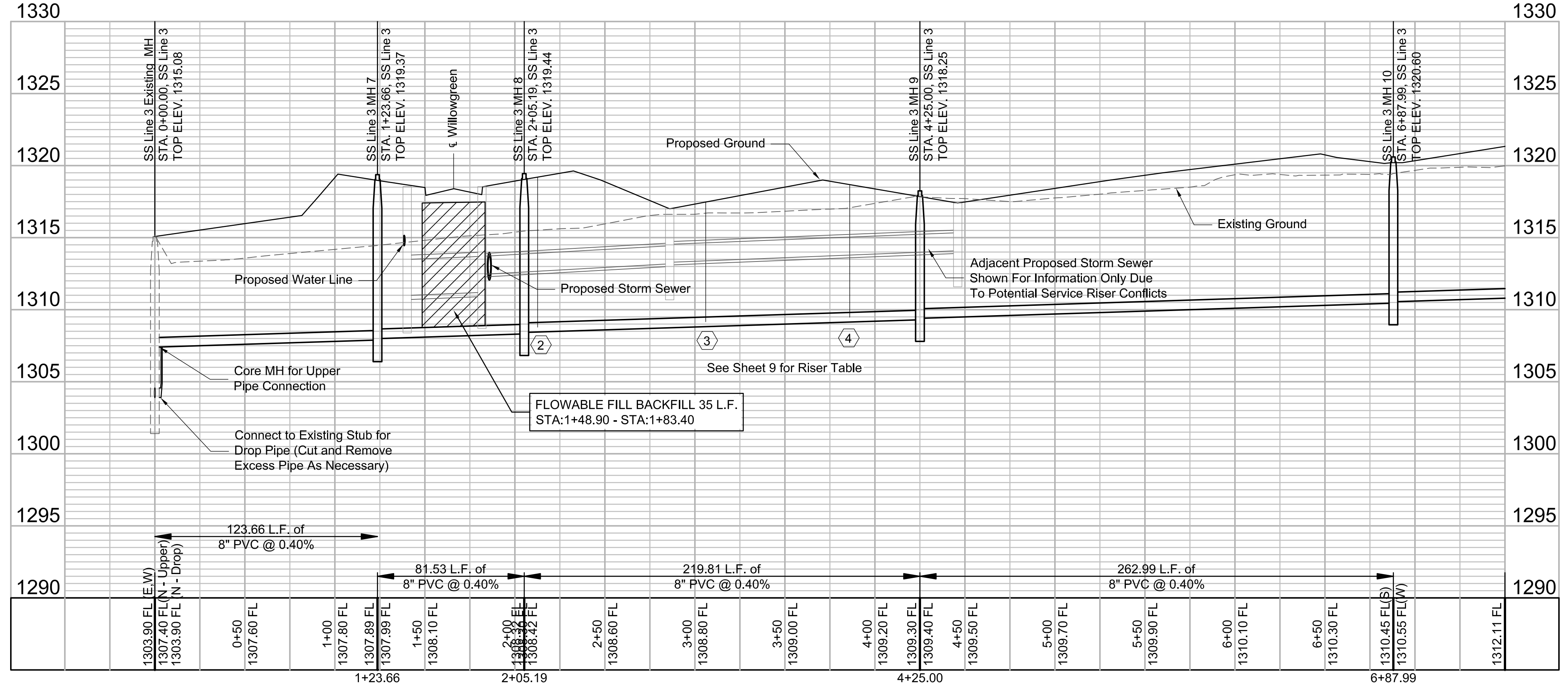
DRAWING NUMBER

SHEET NUMBER **6** OF **18**



- NOTES**
- Contractor to grade around manholes and cleanouts as shown on the detail on Sheet 5. Grading subsidiary to manholes and cleanouts.
 - Contractor to provide temporary grading around manholes to ensure no ponding or damming of water until site grading is completed.
 - Contractor to ensure service risers are not in conflict with any proposed storm sewer.

NUMBER	TYPE	SERVING			FOR INFORMATION ONLY		
		LOT NO.	BLOCK NO.	LINE NO.	APPROX. LENGTH 4" PIPE		
					STATION/DIRECTION	VERTICAL	HORIZONTAL
2	8"X4" Tee	6	3	3	2+13 Right	7.4'	15.0'
3	8"X4" Tee	5	3	3	3+06 Right	5.3'	15.0'
4	8"X4" Tee	4	3	3	3+86 Right	6.2'	15.0'



File: L:\2018\18267013 - Sierra Hills 2nd Phase 4\Drawings\C3D\SS\Sanitary Sewer 3.dwg Last Saved: 9/7/2018 11:28 AM Last saved by: MTDolechek
 Last plotted by: Dolechek, Mark T. Plot Style: --- Plot Scale: 1:2,584.9 Plot Date: 9/7/2018 11:59 AM Plotter used: None

BY	DATE	DESCRIPTION



CITY OF WICHITA
WICHITA, KANSAS

SIERRA HILLS 2nd ADD.
PHASE 4 - SS

Sanitary Sewer
3 - 1

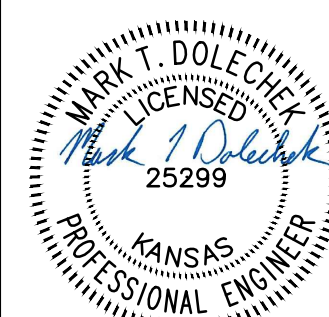
JOB NO.: 18267013
DATE: SEP 2018
DESIGNED BY: MTD
DRAWN BY: CDJ

BAR IS ONE INCH ON ORIGINAL DRAWING
0 1" IF NOT ONE INCH ON THIS SHEET, ADJUST SCALES ACCORDINGLY.

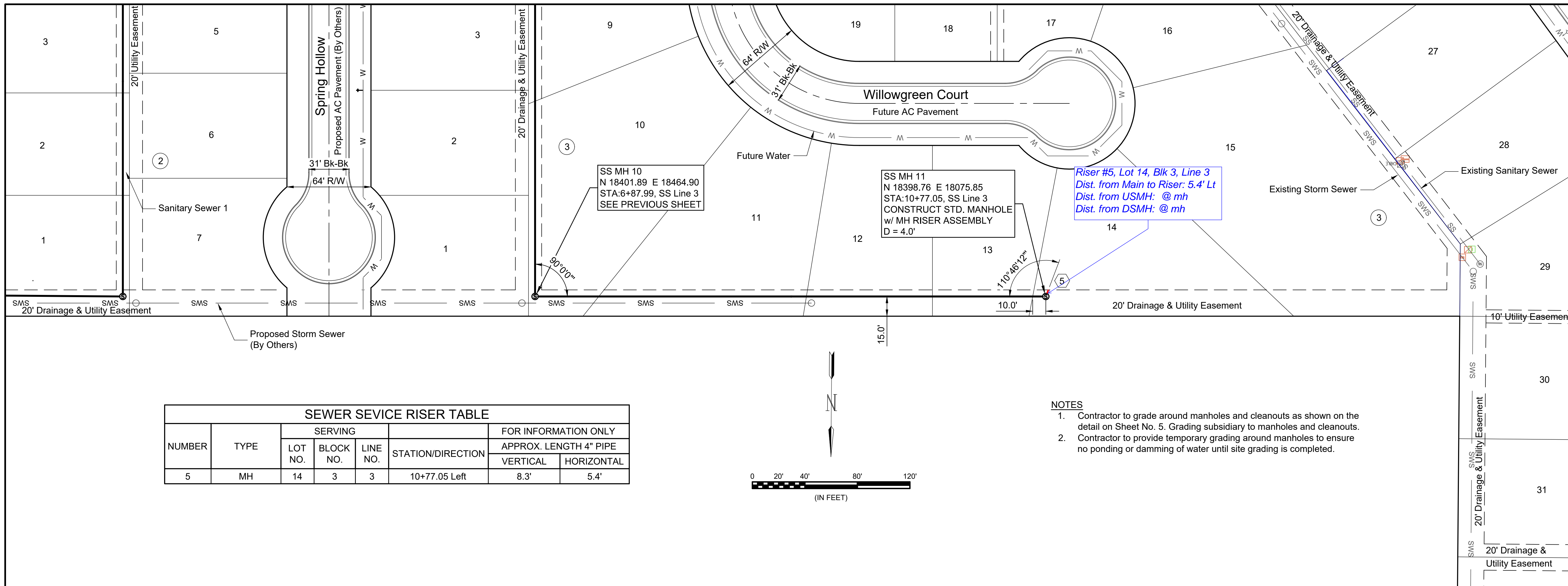
DRAWING NUMBER



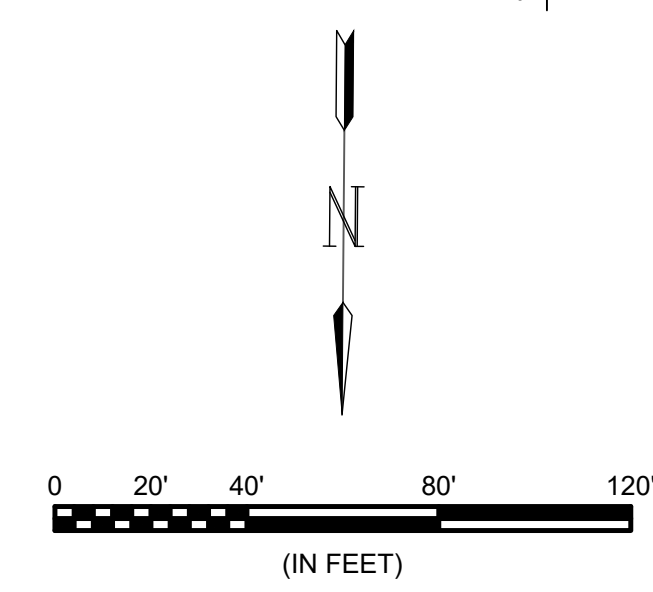
© 2018 GARVER, LLC
 THIS DOCUMENT, ALONG WITH THE IDEAS AND DESIGNS CONVEYED HEREIN, SHALL BE CONSIDERED INSTRUMENTS OF PROFESSIONAL SERVICE AND ARE PROPERTY OF GARVER, LLC. ANY USE, REPRODUCTION, OR DISTRIBUTION OF THIS DOCUMENT, ALONG WITH THE IDEAS AND DESIGN CONTAINED HEREIN, IS PROHIBITED UNLESS AUTHORIZED IN WRITING BY GARVER, LLC OR EXPLICITLY ALLOWED IN THE GOVERNING PROFESSIONAL SERVICES AGREEMENT FOR THIS WORK.



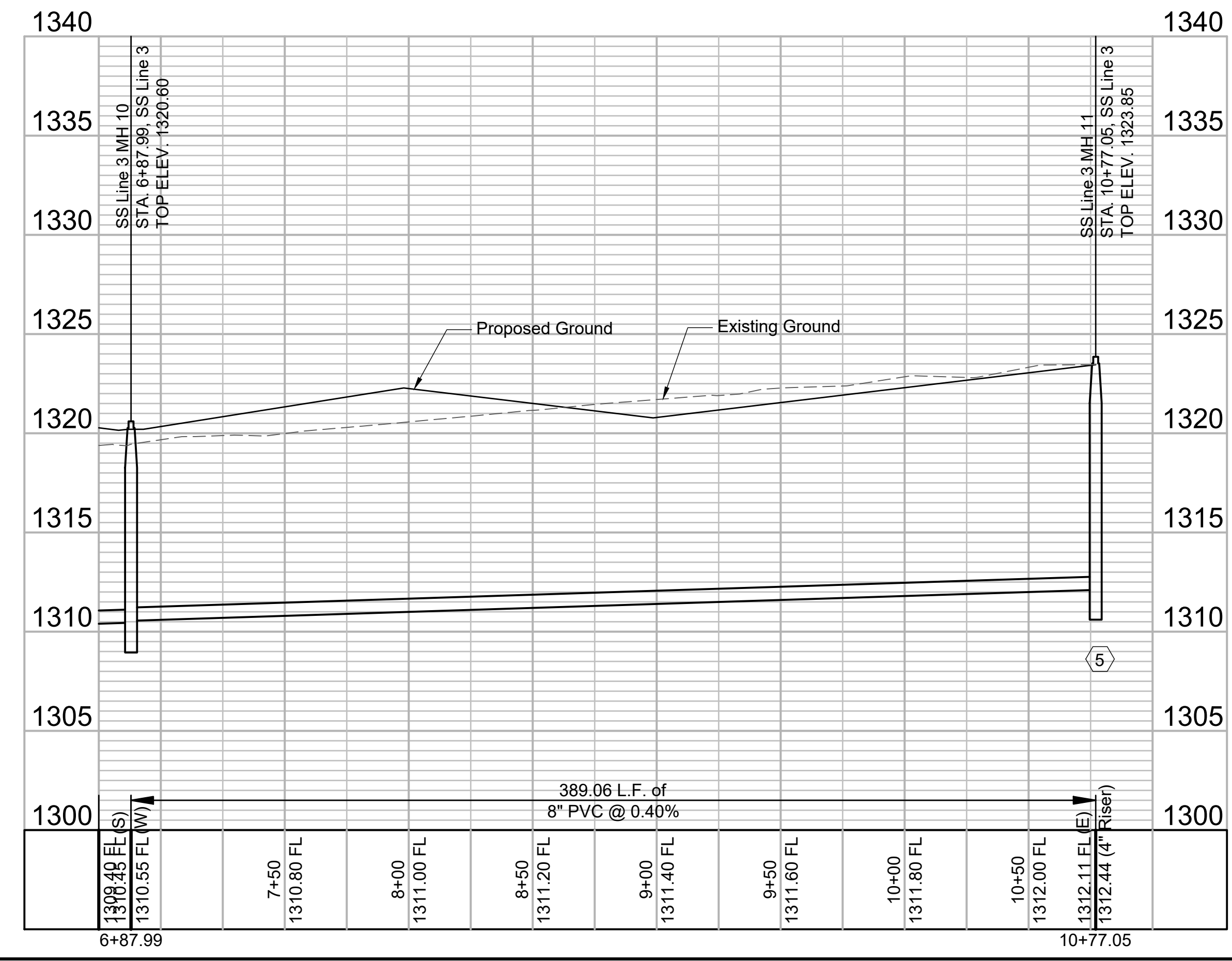
Digitally Signed 09/07/2018



SEWER SEVICE RISER TABLE							
NUMBER	TYPE	SERVING			STATION/DIRECTION	FOR INFORMATION ONLY	
		LOT NO.	BLOCK NO.	LINE NO.		APPROX. LENGTH 4" PIPE	
5	MH	14	3	3	10+77.05 Left	VERTICAL	HORIZONTAL
						8.3'	5.4'



- NOTES**
- Contractor to grade around manholes and cleanouts as shown on the detail on Sheet No. 5. Grading subsidiary to manholes and cleanouts.
 - Contractor to provide temporary grading around manholes to ensure no ponding or damming of water until site grading is completed.



File: L:\2018\18267013 - Sierra Hills 2nd Phase 4Drawings\C3D\SS\Sanitary Sewer 3 - 2.dwg, Last Save: 9/7/2018 11:02 AM, Last saved by: MTDolchek
 Last plotted by: Dolchek, Mark T., Plot Style: ---, Plot Scale: 1:2,584.9 Plot Date: 9/7/2018 11:11 AM, Plotter used: None

REV.	DATE	DESCRIPTION	BY



CITY OF WICHITA
 WICHITA, KANSAS

SIERRA HILLS 2nd ADD.
 PHASE 4 - SS

Sanitary Sewer
 3 - 2

JOB NO.: 18267013
 DATE: SEP 2018
 DESIGNED BY: MTD
 DRAWN BY: MTD/CDJ

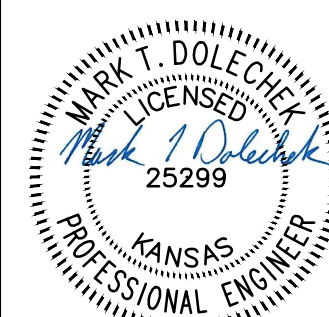
BAR IS ONE INCH ON ORIGINAL DRAWING
 0 1" IF NOT ONE INCH ON THIS SHEET, ADJUST SCALES ACCORDINGLY.

DRAWING NUMBER

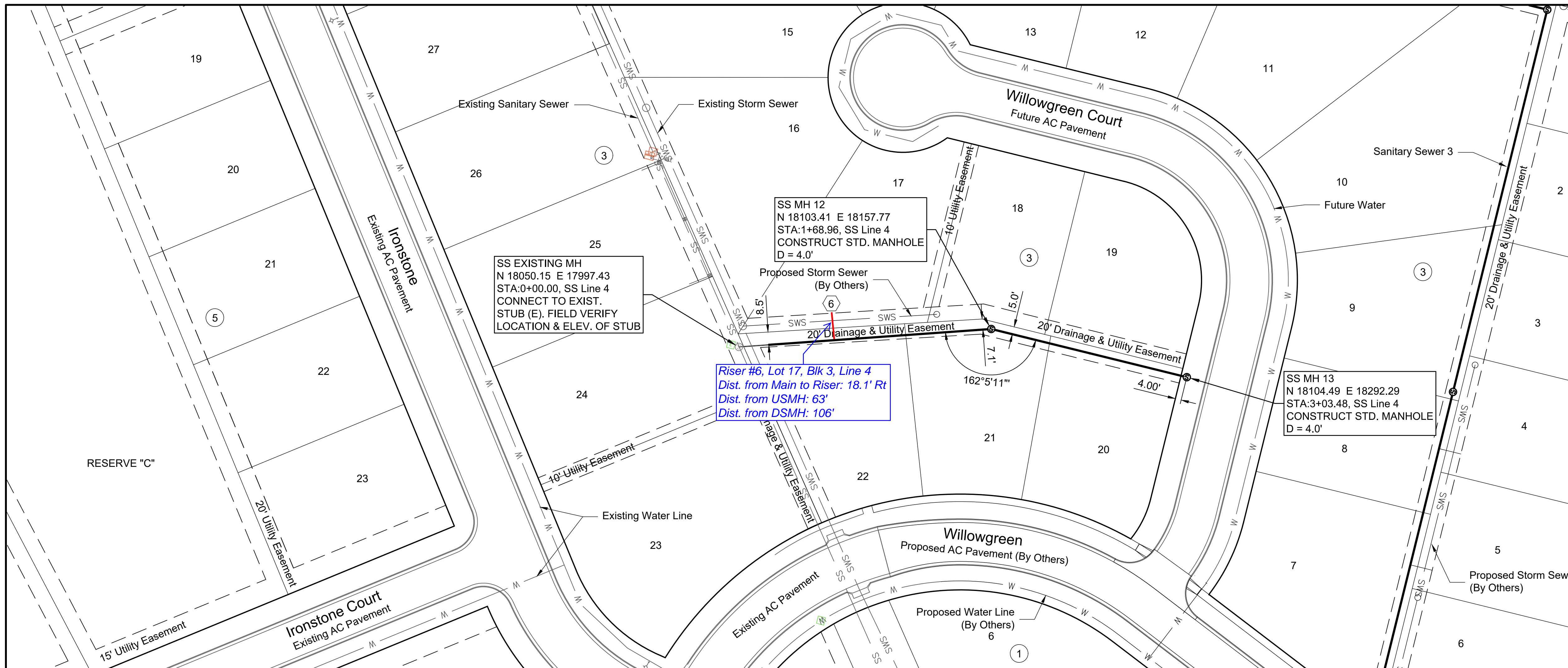
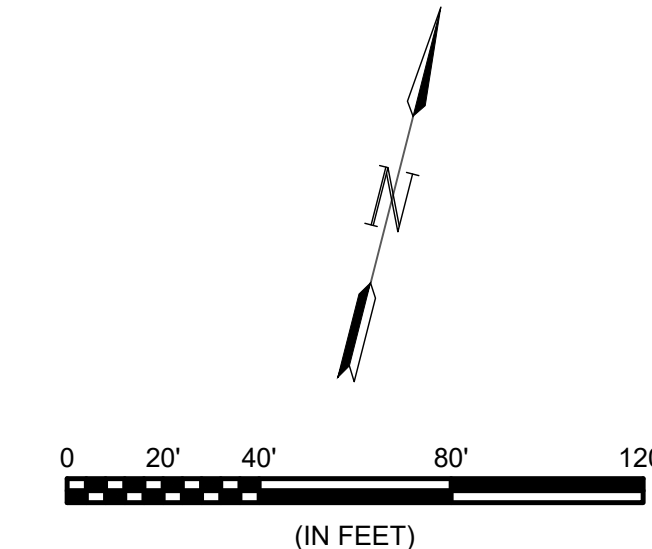
SHEET NUMBER **8** OF **18**



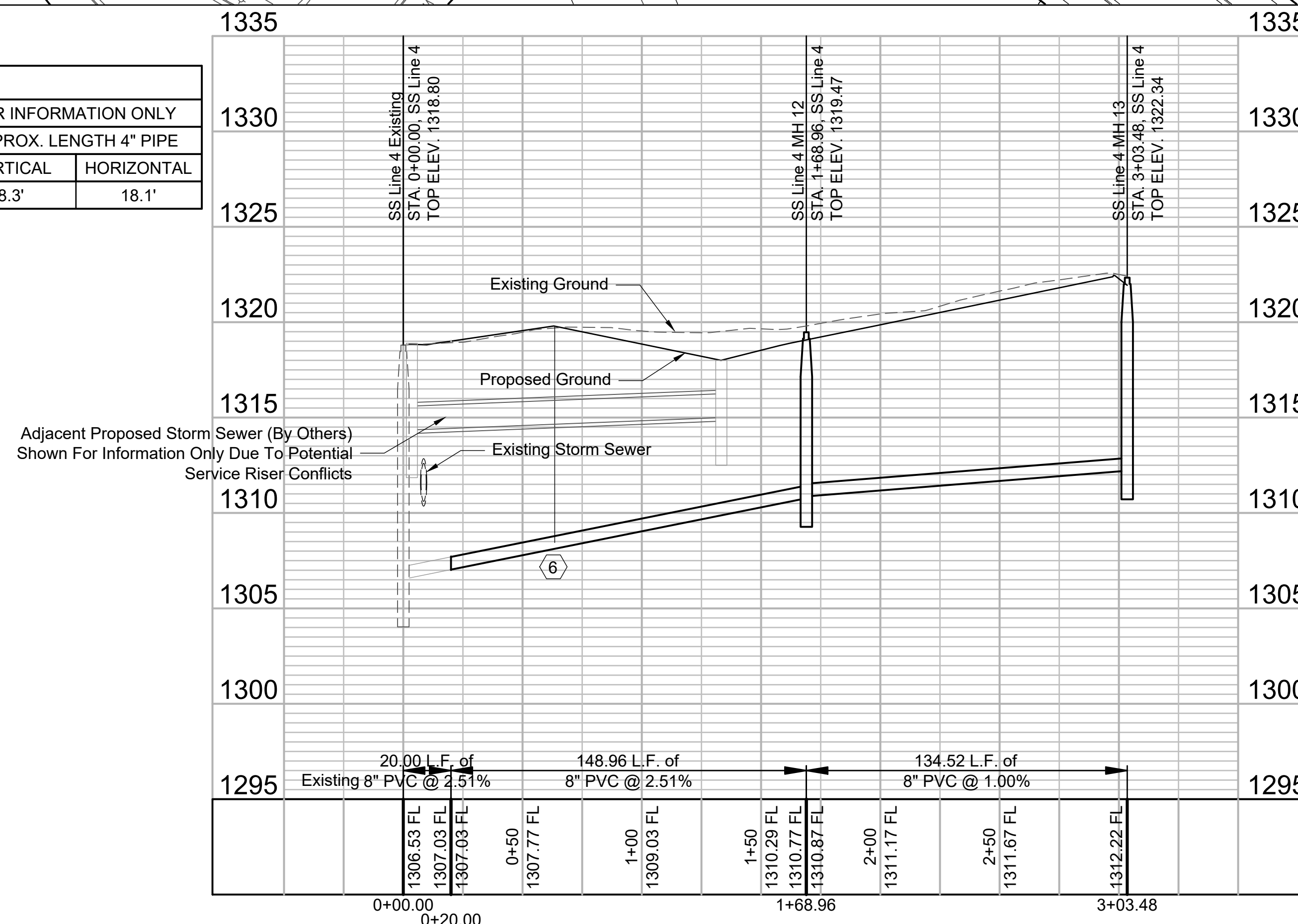
© 2018 GARVER, LLC
 THIS DOCUMENT, ALONG WITH THE IDEAS AND DESIGNS CONVEYED HEREIN, SHALL BE CONSIDERED INSTRUMENTS OF PROFESSIONAL SERVICE AND ARE PROPERTY OF GARVER, LLC. ANY USE, REPRODUCTION, OR DISTRIBUTION OF THIS DOCUMENT, ALONG WITH THE IDEAS AND DESIGN CONTAINED HEREIN, IS PROHIBITED UNLESS AUTHORIZED IN WRITING BY GARVER, LLC OR EXPLICITLY ALLOWED IN THE GOVERNING PROFESSIONAL SERVICES AGREEMENT FOR THIS WORK.



Digitally Signed 09/07/2018



SEWER SERVICE RISER TABLE									
NUMBER	TYPE	SERVING			STATION/DIRECTION	FOR INFORMATION ONLY			
		LOT NO.	BLOCK NO.	LINE NO.		APPROX. LENGTH 4" PIPE			
					VERTICAL	HORIZONTAL			
6	8"X4" Tee	17	3	4	0+63 Right	8.3'	18.1'		



- NOTES**
- Contractor to grade around manholes and cleanouts as shown on the detail on Sheet No. 5. Grading subsidiary to manholes and cleanouts.
 - Contractor to provide temporary grading around manholes to ensure no ponding or damming of water until site grading is completed.
 - Contractor to ensure service risers are not in conflict with any proposed storm sewer.

File: L:\2018\18267013 - Sierra Hills 2nd Phase 4\Drawings\C3D\SS\Sanitary Sewer 4.dwg, Last Save: 8/28/2018 1:22 PM, Last saved by: MTDolechek
 Last plotted by: Dolechek, Mark T., Plot Style: ---, Plot Scale: 1:2,584.9, Plot Date: 9/7/2018 11:12 AM, Plotter used: None

REV.	DATE	DESCRIPTION	BY



CITY OF WICHITA
 WICHITA, KANSAS

SIERRA HILLS 2nd ADD.
 PHASE 4 - SS

Sanitary Sewer
 4

JOB NO.: 18267013
 DATE: SEP 2018
 DESIGNED BY: MTD
 DRAWN BY: CDJ

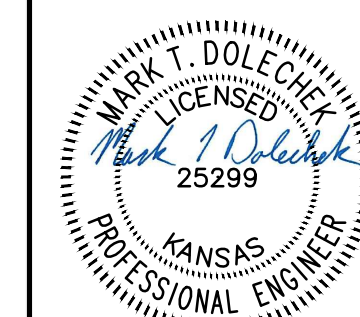
BAR IS ONE INCH ON ORIGINAL DRAWING
 IF NOT ONE INCH ON THIS SHEET, ADJUST SCALES ACCORDINGLY.

DRAWING NUMBER

SHEET NUMBER **9** OF **18**



© 2018 GARVER, LLC
 THIS DOCUMENT, ALONG WITH THE IDEAS AND DESIGNS CONVEYED HEREIN, SHALL BE CONSIDERED INSTRUMENTS OF PROFESSIONAL SERVICE AND ARE PROPERTY OF GARVER, LLC. ANY USE, REPRODUCTION, OR DISTRIBUTION OF THIS DOCUMENT, ALONG WITH THE IDEAS AND DESIGN CONTAINED HEREIN, IS PROHIBITED UNLESS AUTHORIZED IN WRITING BY GARVER, LLC OR EXPLICITLY ALLOWED IN THE GOVERNING PROFESSIONAL SERVICES AGREEMENT FOR THIS WORK.



Digitally Signed 09/07/2018

REV.	DATE	DESCRIPTION	BY



CITY OF WICHITA
 WICHITA, KANSAS
 SIERRA HILLS 2nd ADD.
 PHASE 4 - SS

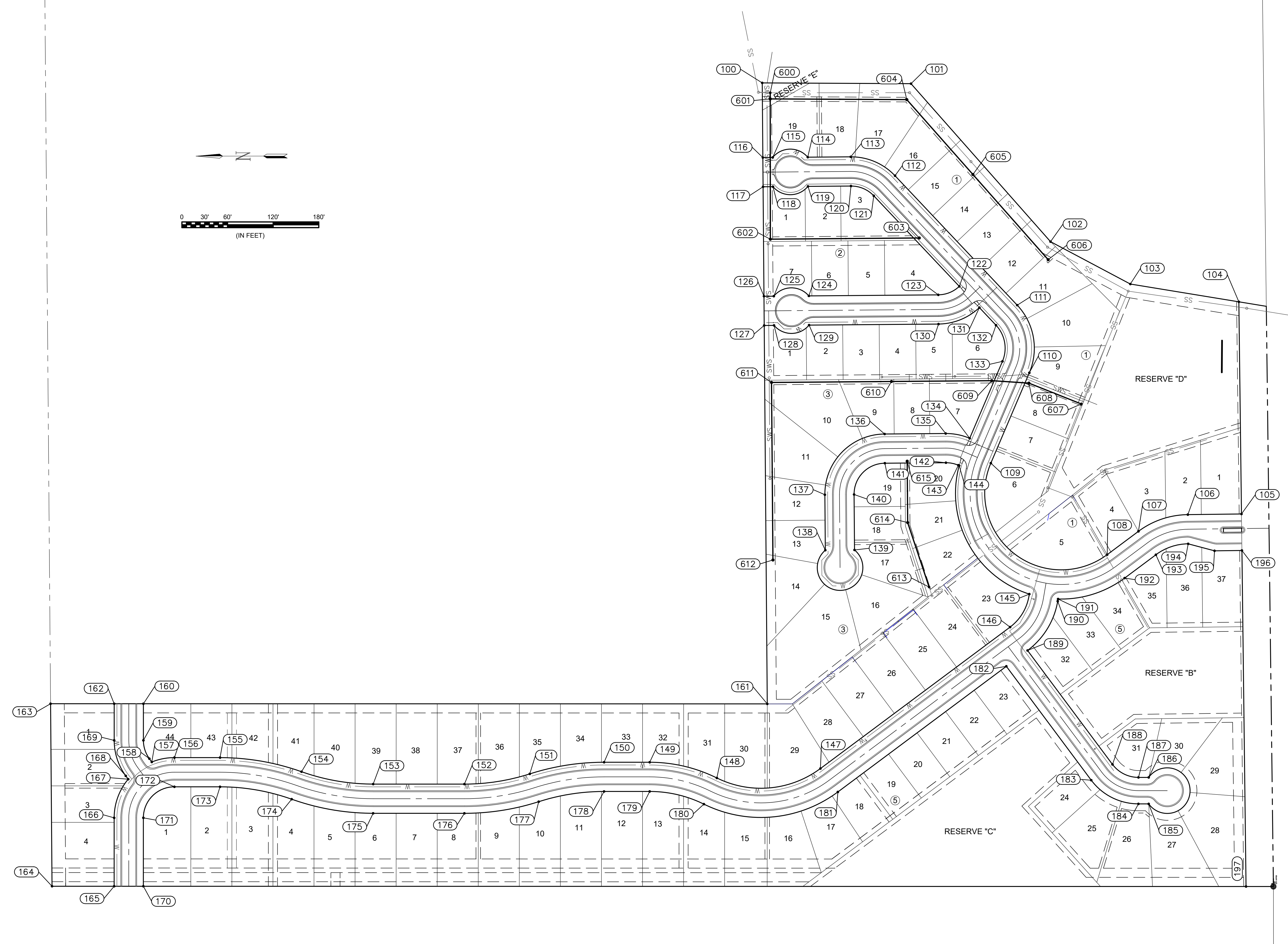
Bubble Map

JOB NO.: 18267013
 DATE: SEP 2018
 DESIGNED BY: MTD
 DRAWN BY: CDJ

BAR IS ONE INCH ON ORIGINAL DRAWING
 0 1" IF NOT ONE INCH ON THIS SHEET, ADJUST SCALES ACCORDINGLY.

DRAWING NUMBER

SHEET NUMBER **10 OF 18**



File: L:\2018\18267013 - Sierra Hills 2nd Phase 4\Drawings\C3D\SS\Sanitary Bubble Map.dwg Last Save: 9/7/2018 11:04 AM Last saved by: MTDolchek
 Last plotted by: Dolchek, Mark T. Plot Style: --- Plot Scale: 1:2,884.9 Plot Date: 9/7/2018 11:12 AM Plotter used: None

