

GENERAL NOTES:

- Contractor will be required to provide notice to utility companies a minimum of seventy-two (72) hours prior to any excavation, as follows:

Kansas One-Call (316)-687-2470

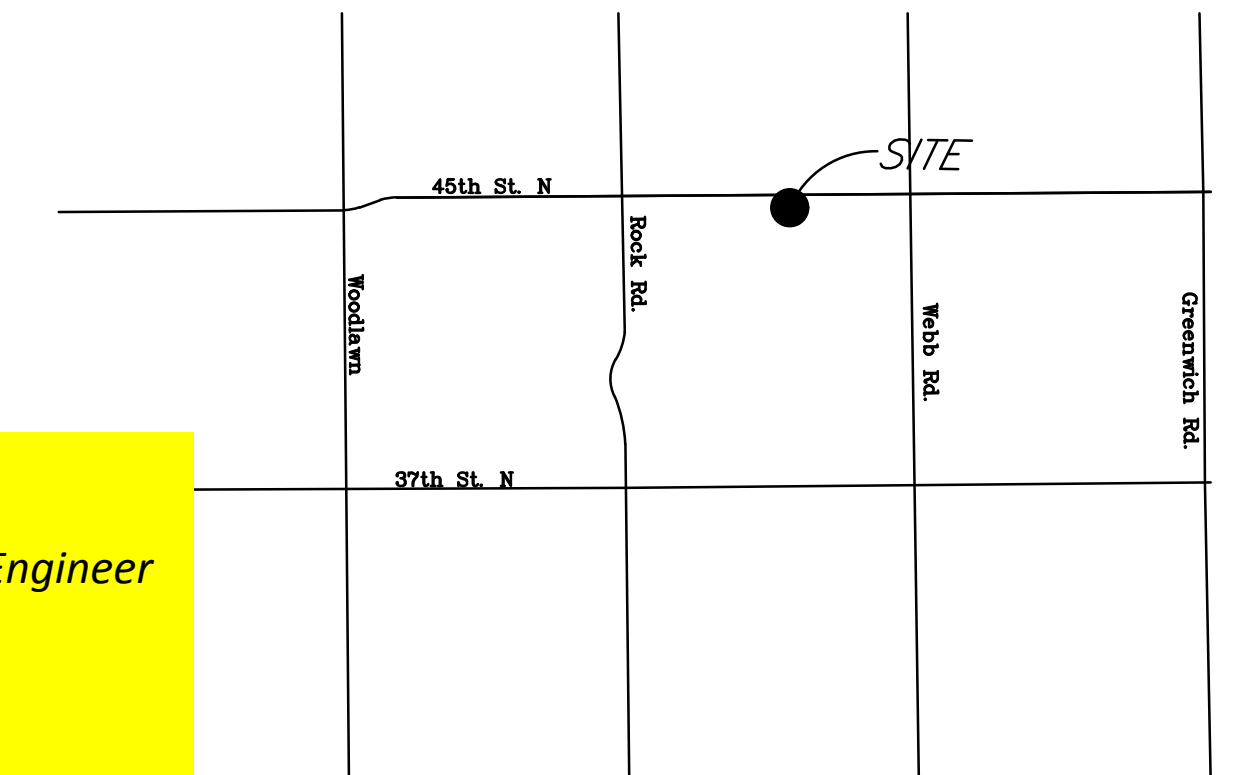
The Contractor must notify the following in case of an emergency:

AT&T	1-800-246-8464
Black Hills Energy	1-800-694-8989
City of Wichita Water & Sewer	1-316-219-8921
City of Wichita Stormwater	1-316-268-4090
City of Wichita Traffic	1-316-268-4034
Cox Communications	1-888-249-3530
Kansas Gas Service	1-888-482-4950
Westar Energy	1-800-544-4857

- Exist. utilities and their locations, as shown on the plans, represent the best information attainable for design. Location information has been obtained from the various utility companies and is either from company record drawings or company-provided field locations. The Contractor will be required to work around existing utilities which do not conflict with proposed constructions.
- The Contractor to verify utility locations prior to construction of this project.
- Utility service and installation shall be coordinated with the respective utility owner.
- All lawn/turf areas disturbed by construction of proposed improvements shall be restored with the same grass as existing. Restoration of disturbed areas shall include, but not limited to, soil preparation, fertilizing, seeding, mulching (all seeded areas, outside the limits of erosion mat placement), and/or reseeding, and installation of erosion control mat. All seeding work shall be in accordance with the City of Wichita Standard Specifications and the City of Wichita Administrative Regulations No. AR 6.5 which governs cleanup and respiration or replacement following construction. All cost for the soil preparation, seeding and mulching (all seeded areas, outside the limits of erosion mat placement) shall be paid for through the lump sum bid item for "Seeding." All seeded areas within eight feet of the back of new curb shall be covered with an approved erosion mat, which shall be paid for by the measured quantity bid item "Back of Curb Protection (8' wide)."
- Traffic affected by the construction of this project shall be handled in accordance with the latest edition of the Manual on Uniform Traffic Control Devices.
- It is the contractor's responsibility to visit this site to better understand the extent of site clearing and restoration to be performed. Site Clearing and Restoration shall include all costs for removal of items which a pay item is not provided.
- The contractor shall be responsible for preserving property irons. The contractor will be required to re-establish any property irons which are damaged or destroyed by the construction operations. Such irons shall be re-established by a licensed land surveyor in accordance with state laws.
- Properties within the project limits may have underground sprinkler systems in public right-of-way which conflict with new construction. Contractor will be required to remove such improvements should they not be removed by their owner at the time of construction of the project. The contractor will be required to salvage all sprinkler heads and/or valves and give such material to owner. Portions of underground sprinkler systems not in conflict with new construction shall be protected from damage and shall remain in place. All work in connection with underground sprinkler systems shall be considered as subsidiary to the contract pay items for work.
- The developer for this project is MKA Properties LLC
3716 N Rushwood Ct. Wichita, KS 67226

LATERAL 136, SS #23 Sun-Air Estates 2nd Addition Project No. 468-85167 (744453) CITY OF WICHITA, KANSAS Gary Janzen, P.E., City Engineer

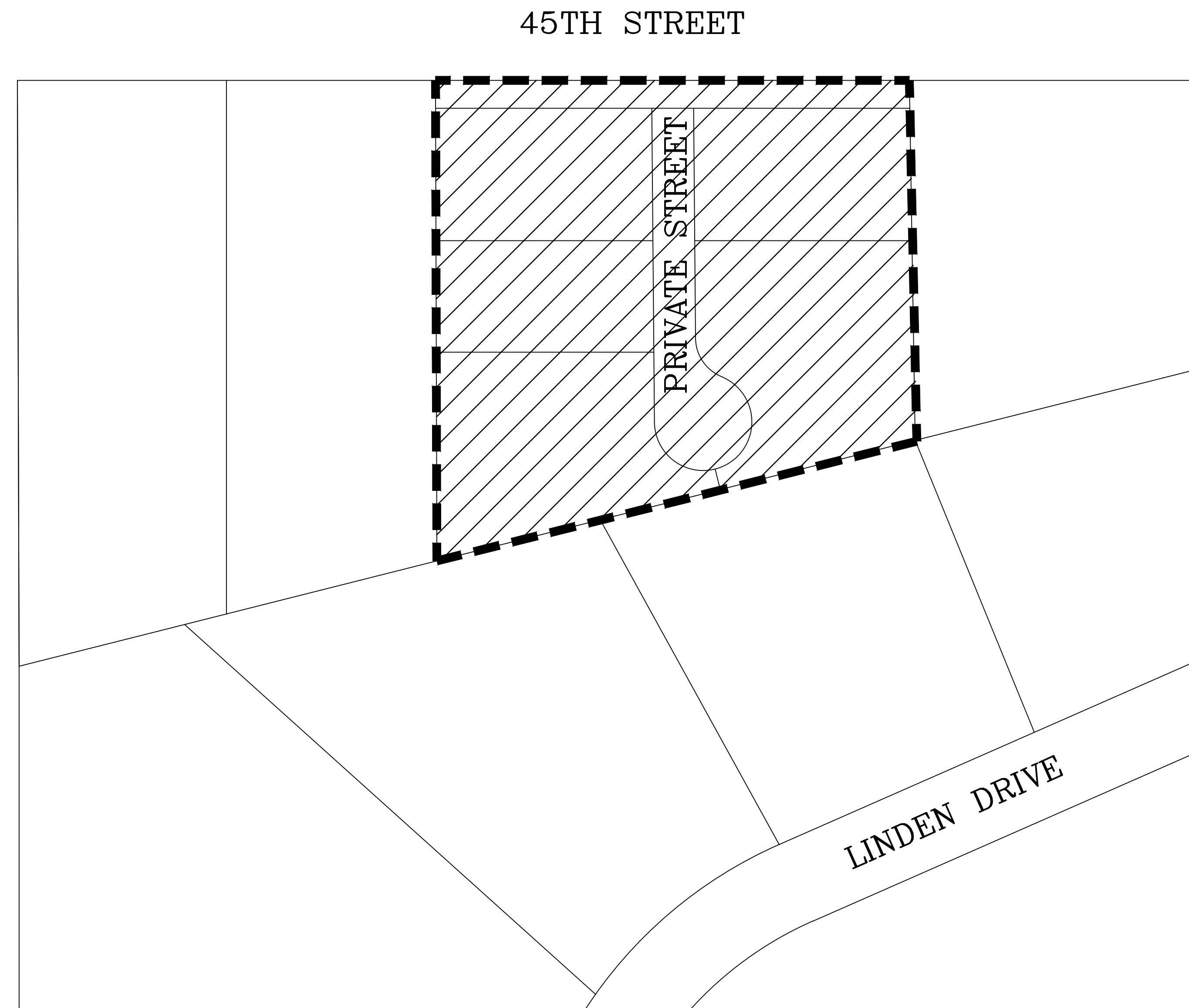
Dutton Construction - Contractor
J. Brand - City of Wichita, Field Project Engineer
T. Dvorak - City of Wichita, Inspector
As-built
Release Date: 4/5/2018
Completion Date: 9/24/2019
pdf: 4/6/18 apr



LOCATION MAP
(For Visual Use Only)

INDEX OF SHEETS:

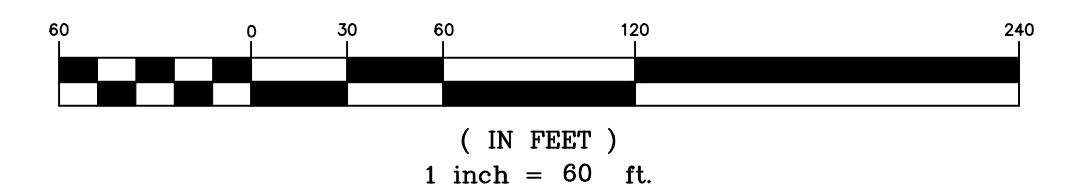
- | | |
|------|---------------------------|
| 1 | Cover Sheet |
| 2 | Control Map/Plan Sheet |
| 3 | Plan and Profile |
| 4 | Standard Sanitary Details |
| 5 | Standard Sanitary Details |
| 6 | Erosion Control Plan |
| 7-11 | Erosion Details |
| 12 | Copy of Plat |



BENCHMARKS:

"□" cut TC, 34.7ft N. & 50.3ft W. of the NE corner of Reserve A, Harry & Webb Commercial Addition.
Elev. = 1354.80 NAVD88

Top of Rebar marking the southwest property corner.
Elev. = 1346.44 NAVD88

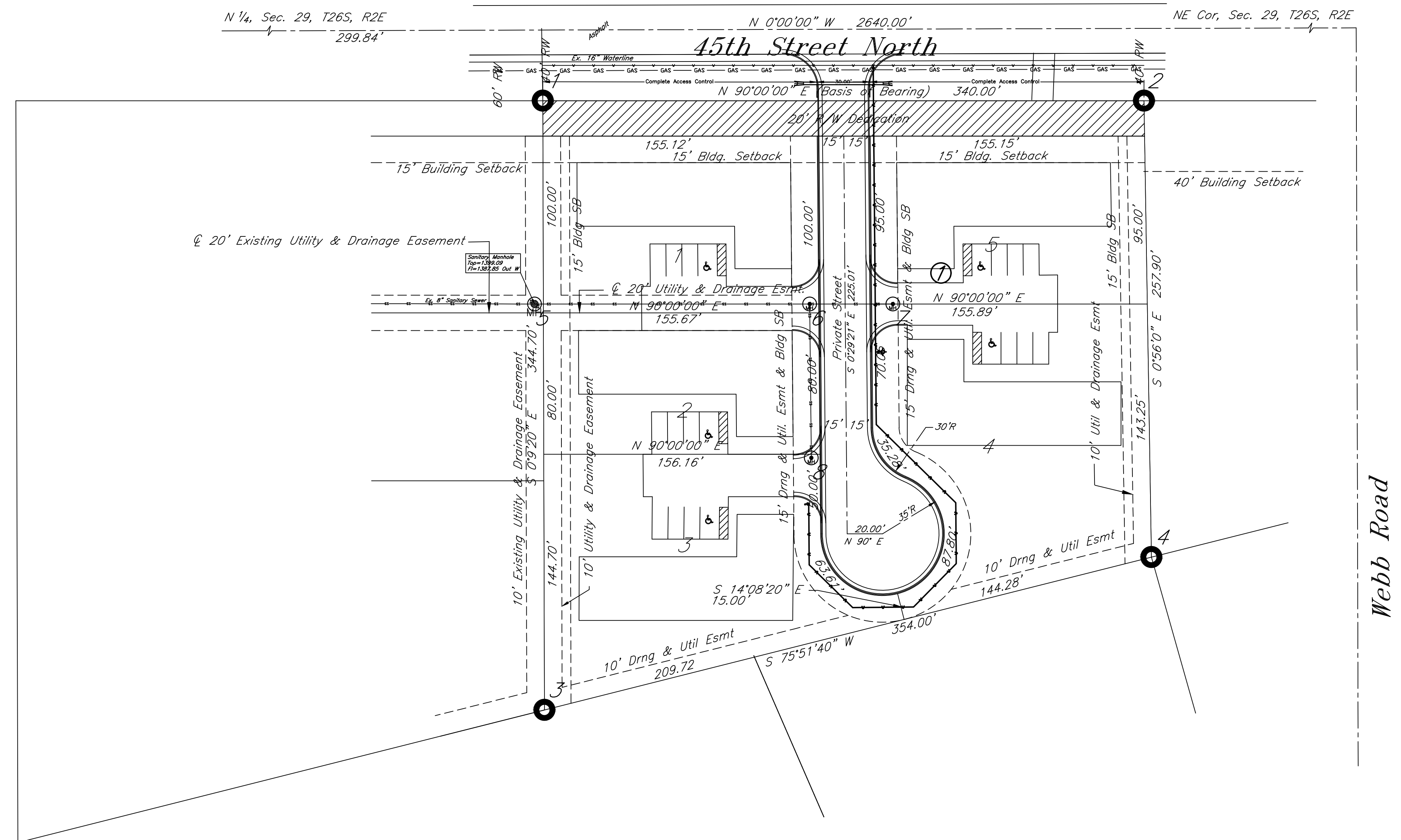


DATE: 12.05.2017
THIS SHEET HAS BEEN
SIGNED, SEALED AND
DATED ELECTRONICALLY

KEMILLER
ENGINEERING PA
117 E. Lewis, Wichita, KS 67202 (316)264-0242

December 2017

Point #	Northing	Easting	Desc.
1	1715382.74	1678124.45	Control Point
2	1715382.74	1678464.45	Control Point
3	1715038.04	1678125.38	Control Point
4	1715124.51	1678470.84	Control Point
5	1715267.74	1678119.76	Sta 0+00.00 Line 1
6	1715267.74	1678275.36	Sta 1+55.60 Line 1
7	1715267.74	1678322.43	Sta 2+02.67 Line 1
8	1715180.68	1678276.33	Sta 0+87.06 Line 2



DATE: 12.05.2017
 THIS SHEET HAS BEEN
 SIGNED, SEALED AND
 DATED ELECTRONICALLY

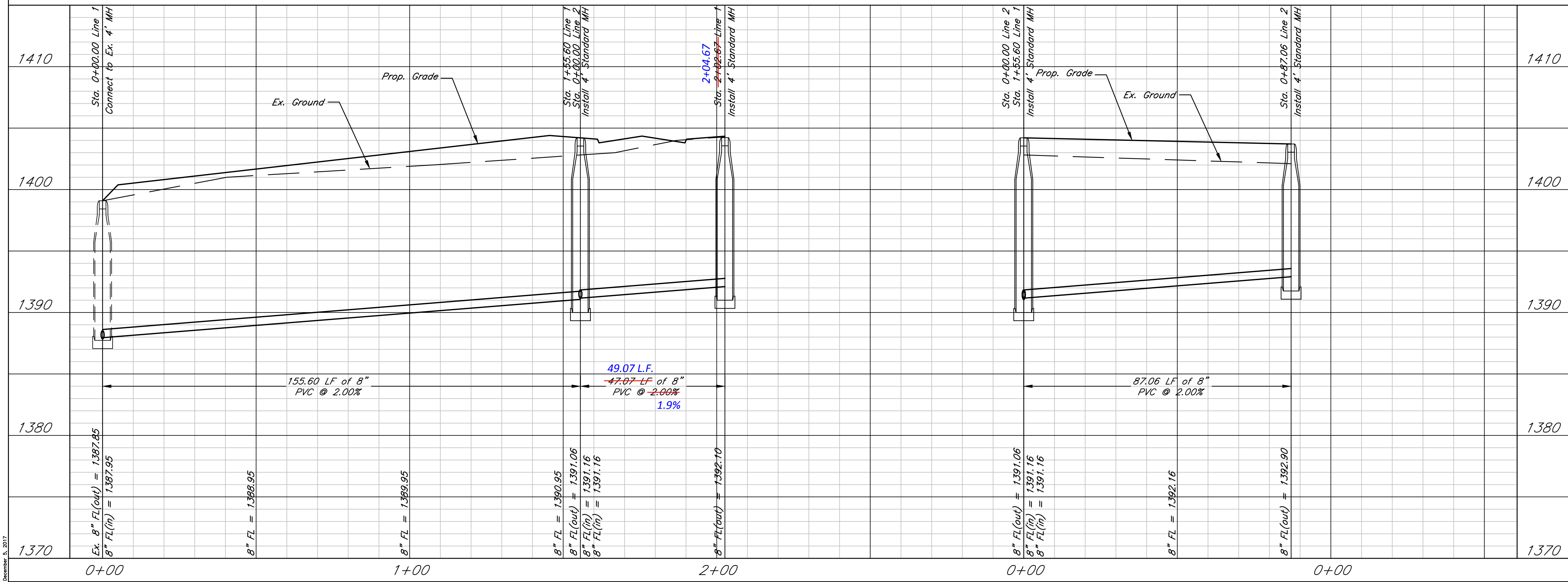
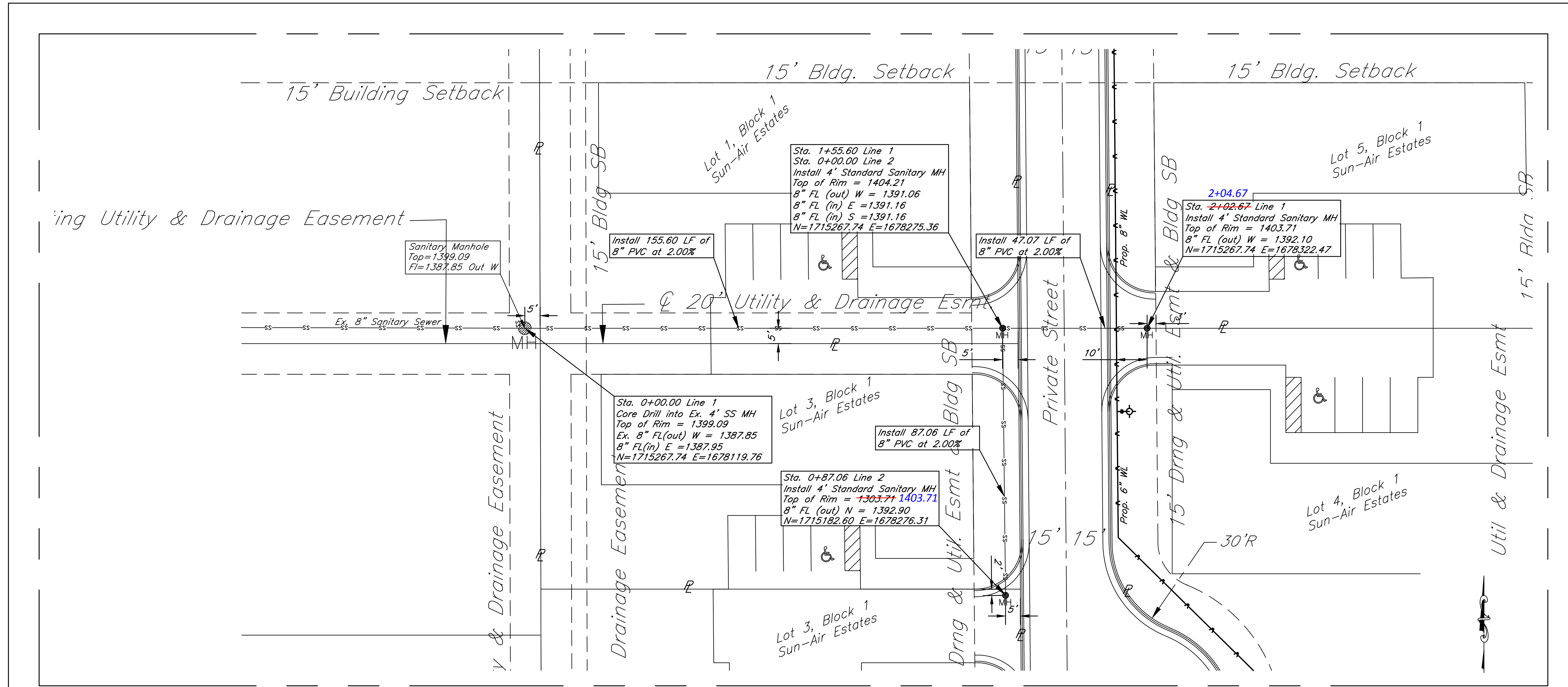


HORIZONTAL SCALE
 (IN FEET)
 1 inch = 40 ft.

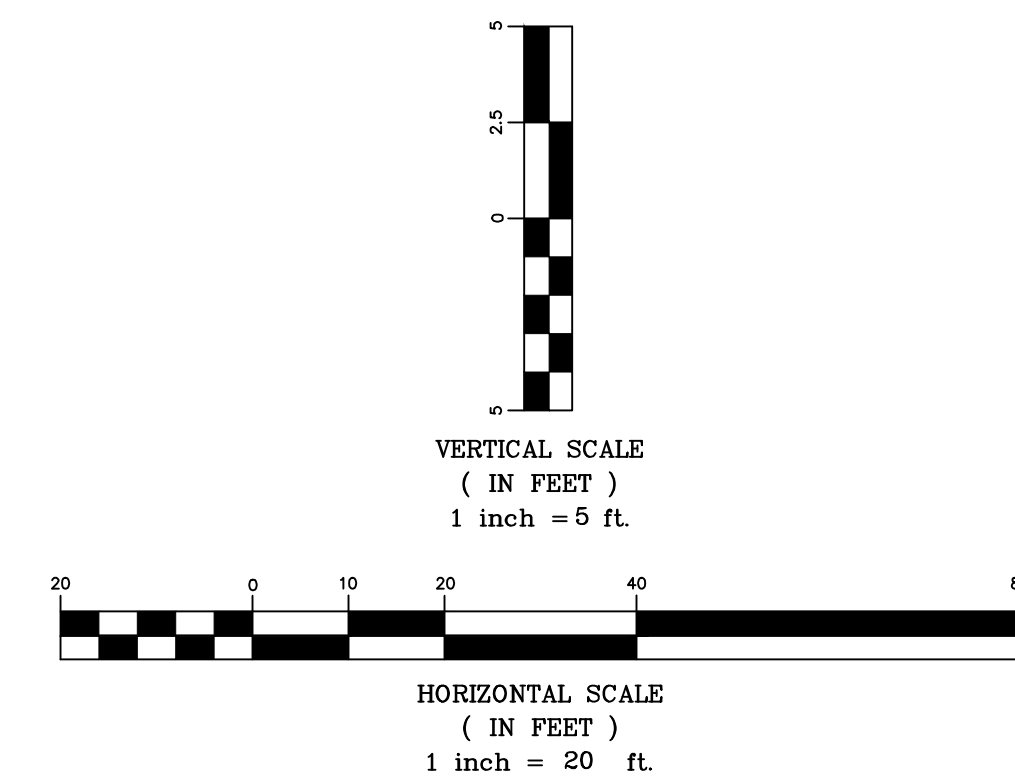
Sun-Air Estates 2nd Addition
Control Map/Plan Sheet
 Wichita, Kansas

 117 E. Lewis, Wichita, KS 67202 (316)264-0242	PROJECT NUMBER			SHEET 2
	KEM NO. 16080	FILE	DATE 12/2017	
DESIGN KM	DRAWN AHS	REVISED		

December 5, 2017



DATE: 12.05.2017
THIS SHEET HAS BEEN
SIGNED, SEALED AND
DATED ELECTRONICALLY



Sun-Air Estates 2nd Addition
Sanitary Line 1 & 2
Wichita, Kansas

	PROJECT NUMBER			SHEET 3
	KEM NO. 16080	FILE	DATE 12/2017	
DESIGN KM	DRAWN AHS	REVISED		

117 E. Lewis, Wichita, KS 67202 (316)264-0242

Sun-Air Estates 2nd Addition
A Replat of Part of Sun-Air Estates
Wichita, Sedgwick County, Kansas

State of Kansas)
 City of Wichita)

This plat of Sun-Air Estates 2nd Addition, Wichita, Sedgwick County, Kansas, has been submitted to and approved by the Wichita-Sedgwick County Metropolitan Area Planning Commission, Wichita, Kansas. Dated this _____ day of _____, 2016.
 Wichita-Sedgwick County Metropolitan Area Planning Commission.

 Carol Chapman Neugent, Chair

 Dale Miller, Secretary

State of Kansas)
 City of Wichita)

This plat approved and all dedications shown hereon accepted by the City Council of the City of Wichita, Kansas, this _____ day of _____, 2016.

At the Direction of the City Council

 Jeff Longwell, Mayor

 Karen Sublett, City Clerk

Entered on transfer record this _____ day of _____, 2016.

 Kelly B. Arnold, County Clerk

State of Kansas)
 County of Sedgwick)

This is to certify that this plat has been filed for record in the Office of the Register of Deeds this _____ day of _____, 2016, at _____ o'clock _____M; and is duly recorded.

 Tonya Buckingham, Register of Deeds

 Judy J. Paget, Deputy

Reviewed in accordance with K.S.A. 58-2005 on this _____ day of _____, 2016.

 Tricia L. Robello, L.S. #1246
 Deputy County Surveyor
 Sedgwick County, Kansas

State of Kansas)
 County of Sedgwick)

I, Joanne D. Swanland, a licensed land surveyor of the State of Kansas, do hereby certify that the following described tract of land was surveyed on this 10th day of August, 2016 and the accompanying final plat prepared and that all the monuments shown herein actually exist and their positions are correctly shown to the best of my knowledge and belief:

LEGAL DESCRIPTION
 Lots 3 & 4 Sun-Air Estates, Sedgwick County, Kansas

All easements and rights-of-way within said tract are hereby vacated by virtue of KSA 12-512b amended.

 Joanne D. Swanland, L.S. #1652

State of Kansas)
 County of Sedgwick)

Know all men by these presents, that we, the undersigned, have caused the land described in the surveyor's certificate to be platted into Lots, Block, a street and a Reserve, to be known as Sun-Air Estates 2nd Addition, Wichita, Sedgwick County, Kansas. Any street dedications shown are dedicated to and for the use of the public. Reserve A is dedicated for a private roadway. The drainage, sidewalk and utility easements are hereby granted as indicated for drainage purposes and for the construction and maintenance of all public utilities and for sidewalk. No signs, light poles, private drainage systems, masonry trash enclosures or other structures shall be located within public utility easement. The access controls are hereby granted to the appropriate governing body as shown hereon. A drainage plan has been developed for the plat and that all drainage easements, rights-of-way, or reserves shall remain at established grades or as modified with the approval of the applicable City or County Engineer, and unobstructed to allow for the conveyance of stormwater. And further that the land contained herein is held and shall be conveyed subject to any applicable restrictions, reservations and covenants now on file or hereafter filed in the Office of the Register of Deeds of Sedgwick County, Kansas. All abutter's right of access to and from 45th Street is hereby granted to the appropriate governing body as shown on the plat.

By: _____ date _____
 Musa Nyang, Manager
 Quality Unique Individualized Care, LLC

State of Kansas)
 County of Sedgwick)

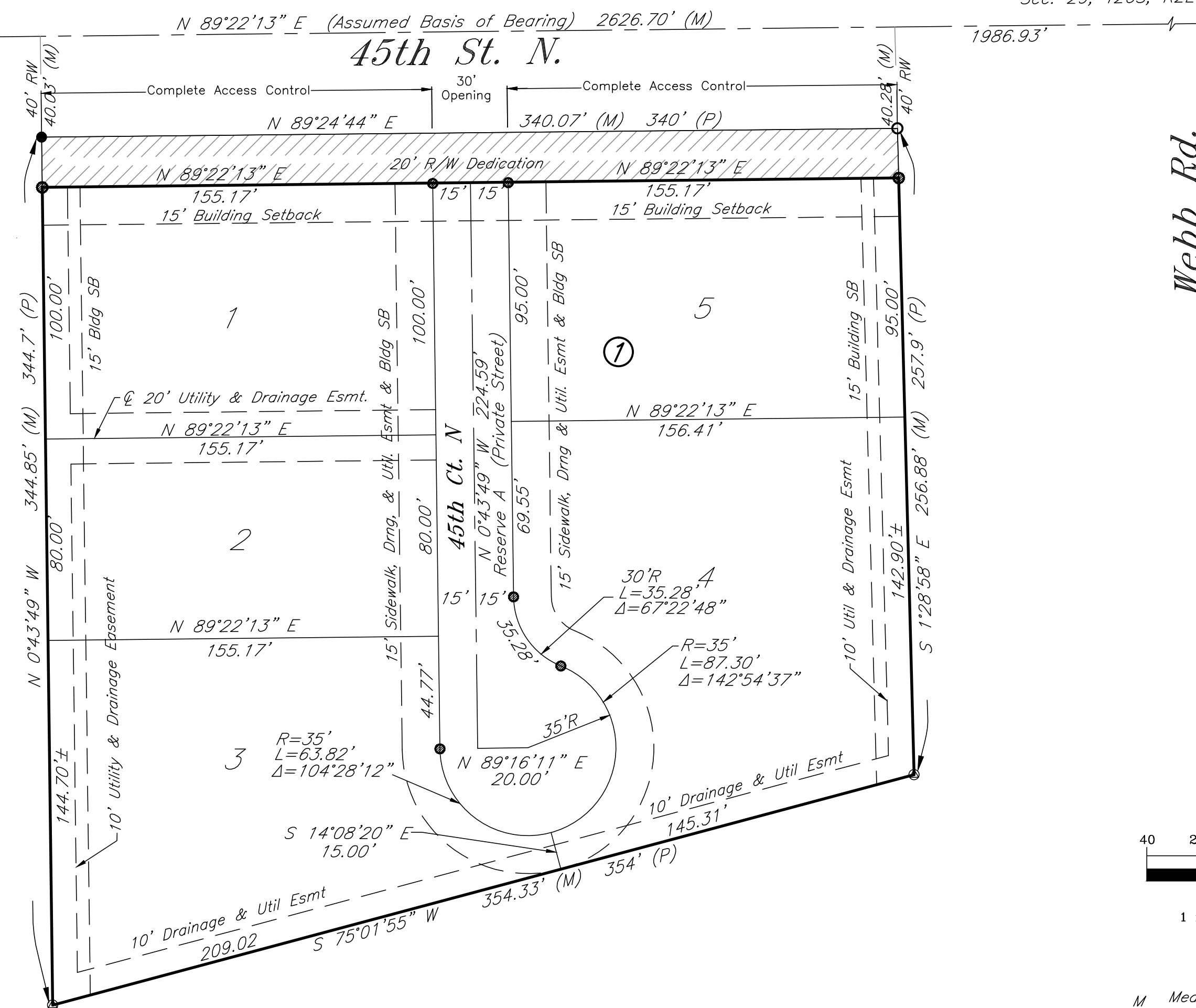
This instrument was acknowledged before me on this _____ day of _____, 2016, Quality Unique Individualized Care, LLC, Musa Nyang, Manager.

 Notary Public

My Commission Expires: _____

N 1/4 Corner
 Sec. 29, T26S, R2E
 300.23'

NE Corner
 Sec. 29, T26S, R2E
 1986.93'



- Legend**
- M Measured
 - P Platted
 - ⊙ 3/4" Iron Pipe (found)
 - 5/8" Rebar (found) unreadable cap
 - 1/2" Rebar (found) no cap
 - 1/2" Rebar (found) Armstrong
 - ⊗ 1/2" Iron Pipe (found)
 - 5/8" Rebar (set) KEMPA CLS #157

16080 Sun-Air Estates 2nd Addition 11/07/2016

KEMILLER
 ENGINEERING PA
 117 E. Lewis, Wichita, KS 67202 (316)264-0242