

N 1668046.97 E 1653536.49
 STA. 0+00.00, LINE 20 =
 STA. 0+77.57 CROWLEY-W, 24.00' RT.
 CONNECT TO EXIST. 8" MAIN
 * 1-8" TAPPING VALVE
 * 1-8"X8" TAPPING SLEEVE
 ** 1-6" VALVE BOX ASS'Y.
 VALVE BOX ELEV. 1278.80
 * SUPPLIED AND INSTALLED BY
 CITY OF WICHITA WATER DEPT.
 ** SUPPLIED BY C.O.W.
 INSTALLED BY CONTRACTOR

N 1668047.02 E 1653540.04
 STA. 0+03.55, LINE 20 =
 STA. 0+81.12 CROWLEY-W, 24.00' RT.
 1-8" MJ BEND 45° (VERT.)

N 1668047.05 E 1653541.96
 STA. 0+05.47, LINE 20 =
 STA. 0+83.04 CROWLEY-W, 24.00' RT.
 1-8" MJ BEND 45° (VERT.)

N 1668047.24 E 1653553.82
 STA. 0+17.33, LINE 20 =
 STA. 0+94.90 CROWLEY-W, 24.00' RT.
 1-8" MJ BEND 45° (VERT.)

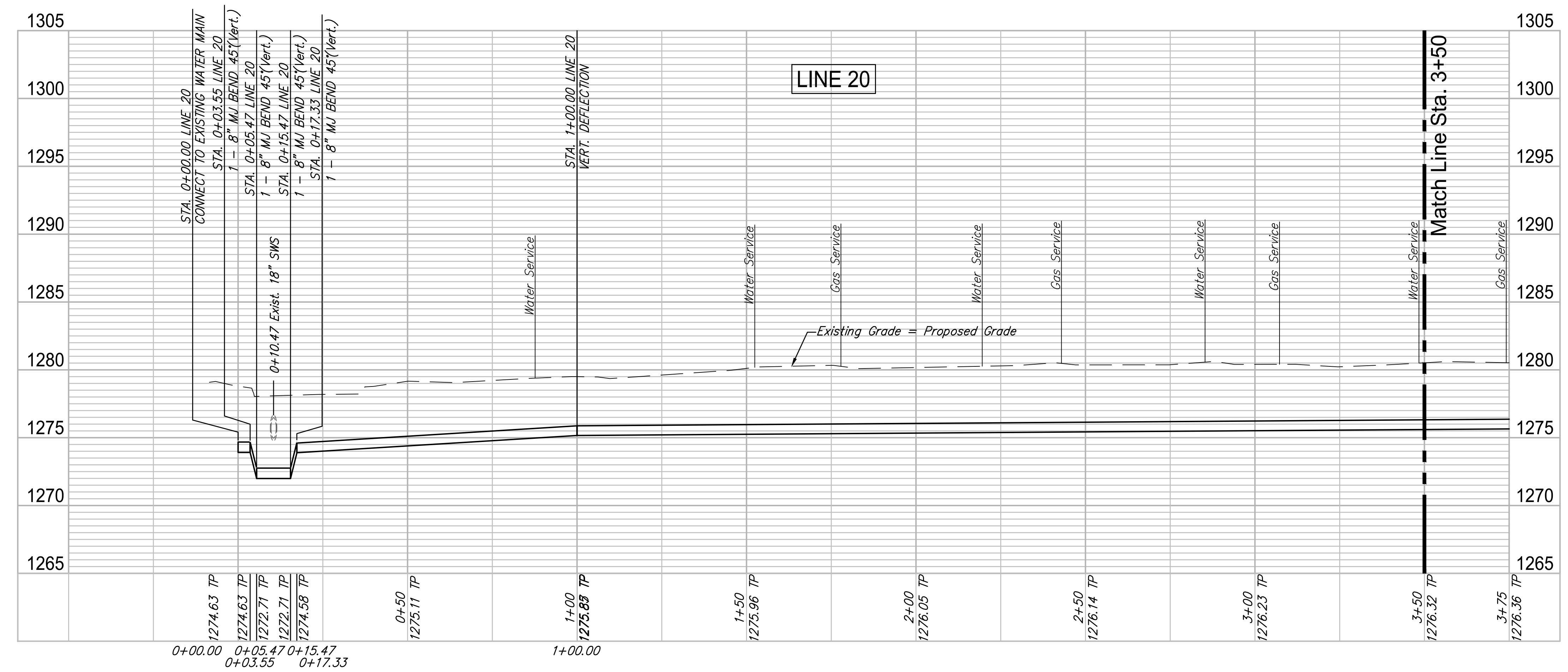
N 1668047.21 E 1653551.96
 STA. 0+15.47, LINE 20 =
 STA. 0+93.04 CROWLEY-W, 24.00' RT.
 1-8" MJ BEND 45° (VERT.)

WATER METER SUMMARY				
BL Station	Lt./Rt.	Service (Long or Short)	Address	As Built
1+59	Lt.	Long	1302 E. CROWLEY	
1+65	Rt.	Short	1301 E. CROWLEY	
2+30	Rt.	Short	1307 E. CROWLEY	

WATER METER SUMMARY				
BL Station	Lt./Rt.	Service (Long or Short)	Address	As Built
2+37	Lt.	Long	1308 E. CROWLEY	
2+97	Rt.	Short	1315 E. CROWLEY	
3+02	Lt.	Long	1314 E. CROWLEY	

WATER METER SUMMARY				
BL Station	Lt./Rt.	Service (Long or Short)	Address	As Built
3+63	Rt.	Short	1319 E. CROWLEY	
3+73	Lt.	Long	1320 E. CROWLEY	
4+26	Rt.	Short	1325 E. CROWLEY	

Existing Pavement, Curb and Cutter to be Removed and Replaced as necessary for construction. No additional pay shall be made for this work, Subsidiary to other pay items.



REVIEW: 5-24-2017
 DESIGN: CMB / RA
 PROJECT NUMBER: 448-30721
 DRAWING FILE: LINE 20 - Crowley
 DATE: 4/20/18
 DRAWN: DRS / RA
ROSE MARIE WATER - Part B
Crowley - Line 20 (1 of 2)
 Wichita, Kansas
 GARVER ENGINEERS
 16264 01
 11 OF 53
 © Copyright 2018, Garver

F:\Projects\Projects 4700-4799\4701W (Rose Marie waterline replacement)\LINE 20 - Crowley.dwg