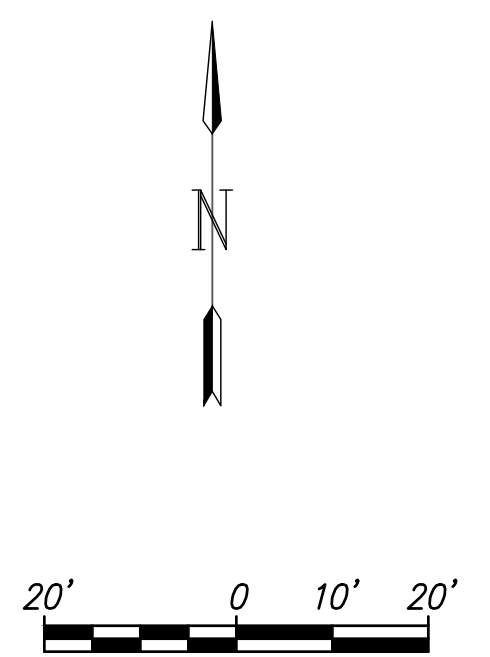
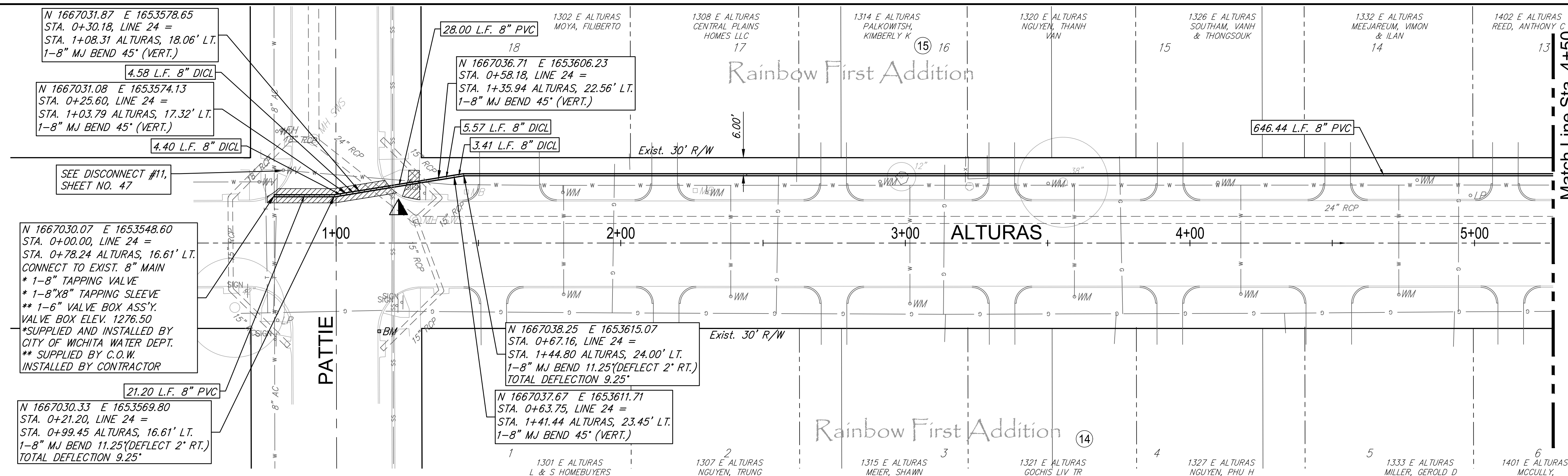


F:\Projects\Projects 4700-4799\4701W (Rose Marie waterline replacement)\LINE 24 - Alturas.dwg



N 1667031.87 E 1653578.65
STA. 0+30.18, LINE 24 =
STA. 1+08.31 ALTURAS, 18.06' LT.
1-8" MJ BEND 45° (VERT.)

4.58 L.F. 8" DIP

N 1667031.08 E 1653574.13
STA. 0+25.60, LINE 24 =
STA. 1+03.79 ALTURAS, 17.32' LT.
1-8" MJ BEND 45° (VERT.)

4.40 L.F. 8" DIP

SEE DISCONNECT #11,
SHEET NO. 47

N 1667030.07 E 1653548.60
STA. 0+00.00, LINE 24 =
STA. 0+78.24 ALTURAS, 16.61' LT.
CONNECT TO EXIST. 8" MAIN
* 1-8" TAPPING VALVE
* 1-8"x8" TAPPING SLEEVE
** 1-6" VALVE BOX ASS'Y,
VALVE BOX ELEV. 1276.50
* SUPPLIED AND INSTALLED BY
CITY OF WICHITA WATER DEPT.
** SUPPLIED BY C.O.W.
INSTALLED BY CONTRACTOR

21.20 L.F. 8" PVC

N 1667030.33 E 1653569.80
STA. 0+21.20, LINE 24 =
STA. 0+99.45 ALTURAS, 16.61' LT.
1-8" MJ BEND 11.25(DEFLECT 2" RT.)
TOTAL DEFLECTION 9.25"

28.00 L.F. 8" PVC

N 1667036.71 E 1653606.23
STA. 0+58.18, LINE 24 =
STA. 1+35.94 ALTURAS, 22.56' LT.
1-8" MJ BEND 45° (VERT.)

5.57 L.F. 8" DIP

3.41 L.F. 8" DIP

N 1667038.25 E 1653615.07
STA. 0+67.16, LINE 24 =
STA. 1+44.80 ALTURAS, 24.00' LT.
1-8" MJ BEND 11.25(DEFLECT 2" RT.)
TOTAL DEFLECTION 9.25"

N 1667037.67 E 1653611.71
STA. 0+63.75, LINE 24 =
STA. 1+41.44 ALTURAS, 23.45' LT.
1-8" MJ BEND 45° (VERT.)

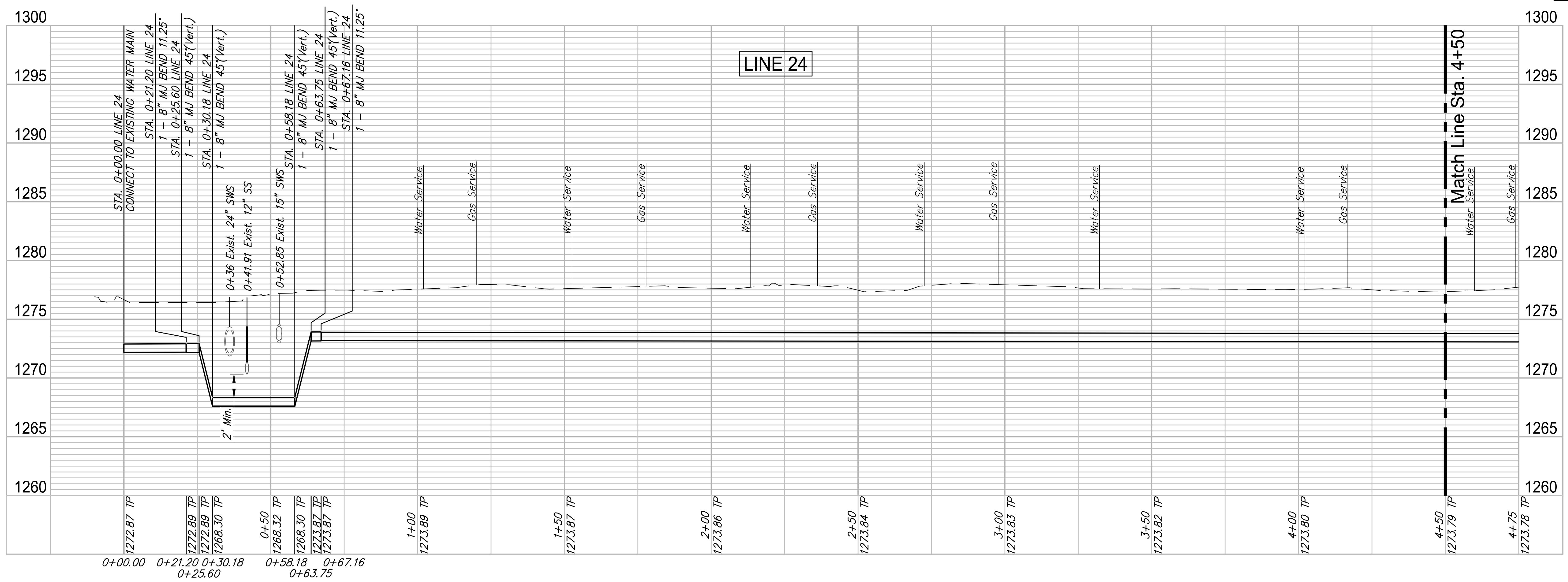
WATER METER SUMMARY				
BL Station	Lt./Rt.	Service (Long or Short)	Address	As Built
1+80	Lt.	Short	1302 E. ALTURAS	
1+80	Rt.	Long	1301 E. ALTURAS	
2+30	Lt.	Short	1308 E. ALTURAS	
2+39	Rt.	Long	1307 E. ALTURAS	

WATER METER SUMMARY				
BL Station	Lt./Rt.	Service (Long or Short)	Address	As Built
2+91	Lt.	Short	1314 E. ALTURAS	
3+02	Rt.	Long	1315 E. ALTURAS	
3+50	Lt.	Short	1320 E. ALTURAS	
3+59	Rt.	Long	1321 E. ALTURAS	

WATER METER SUMMARY				
BL Station	Lt./Rt.	Service (Long or Short)	Address	As Built
4+10	Lt.	Short	1326 E. ALTURAS	
4+18	Rt.	Long	1327 E. ALTURAS	
4+73	Rt.	Long	1333 E. ALTURAS	
4+80	Lt.	Short	1332 E. ALTURAS	

Existing Pavement, Curb and Gutter to be Removed and Replaced as necessary for construction. No additional pay shall be made for this work, Subsidiary to other pay items.

Replace Wheel Chair Ramp



REVIEW: 5-24-2017 DATE: 4/20/18

DESIGN: CMB / RA DRAWN: DRS / RA

PROJECT NUMBER: 448-90721 DRAWING FILE: LINE 24 - Alturas

ROSE MARIE WATER - Part B
Alturas - Line 24 (1 of 2)
Wichita, Kansas

GARVER LICENSE NO. 16264701

19 OF 53

© Copyright 2018, Garver