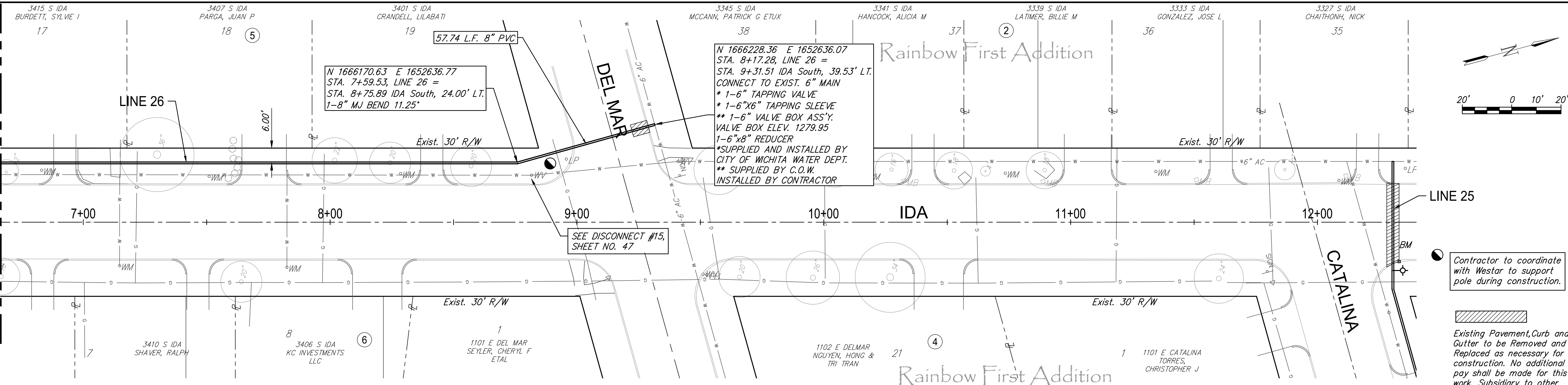


Match Line Sta. 5+50



N 1666170.63 E 1652636.77  
STA. 7+59.53, LINE 26 =  
STA. 8+75.89 IDA South, 24.00' LT.  
1-8" MJ BEND 11.25"

N 1666228.36 E 1652636.07  
STA. 8+17.28, LINE 26 =  
STA. 9+31.51 IDA South, 39.53' LT.  
CONNECT TO EXIST. 6" MAIN  
\* 1-6" TAPPING VALVE  
\* 1-6"x6" TAPPING SLEEVE  
\*\* 1-6" VALVE BOX ASS'Y.  
VALVE BOX ELEV. 1279.95  
1-6"x8" REDUCER  
\* SUPPLIED AND INSTALLED BY  
CITY OF WICHITA WATER DEPT.  
\*\* SUPPLIED BY C.O.W.  
INSTALLED BY CONTRACTOR

SEE DISCONNECT #15,  
SHEET NO. 47

Contractor to coordinate  
with Westar to support  
pole during construction.

Existing Pavement, Curb and  
Gutter to be Removed and  
Replaced as necessary for  
construction. No additional  
pay shall be made for this  
work, Subsidiary to other  
pay items.

WATER METER SUMMARY				
BL Station	Lt./Rt.	Service (Long or Short)	Address	As Built
6+83	Lt.	Short	3415 S. IDA	
7+15	Rt.	Long	3410 S. IDA	
7+51	Lt.	Short	3407 S. IDA	
7+83	Rt.	Long	3406 S. IDA	
8+29	Lt.	Short	3401 S. IDA	



GARVER  
624 N. MAIN  
WICHITA, KS 67203  
316.264.8000  
WWW.GARVERUSA.COM

REVIEW  
5-24-2017  
DATE  
4/2/2018

DESIGN  
CMB / RA  
DRAWN  
DRS / RA

PROJECT NUMBER  
448-30721  
DRAWING FILE  
LINE 26 - 16b 2-2

ROSE MARIE WATER - Part B  
Ida - Line 26 (2 of 2)  
Wichita, Kansas

GARVER JOB  
16264701  
SHEET  
24  
OF  
53

© Copyright 2018, Garver

F:\Projects\Projects 4700-4799\4701W (Rose Marie waterline replacement)\LINE 26 - 16b 2-2.dwg

