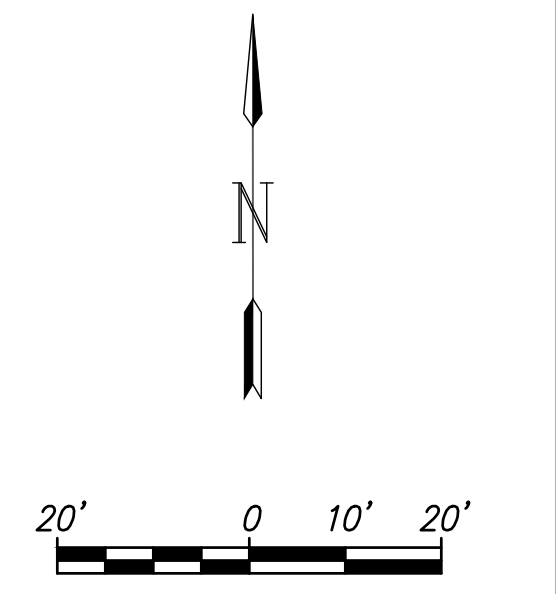
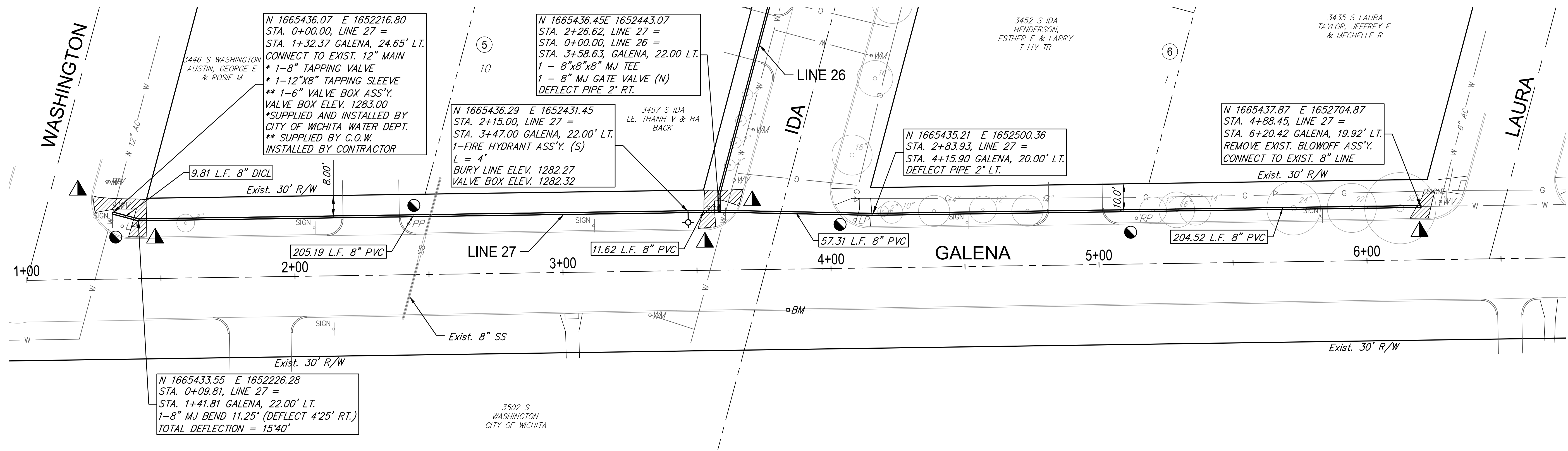


Rainbow First Addition



- Replace Wheel Chair Ramp
- Contractor to coordinate with Westar to support pole during construction.
- Existing Pavement, Curb and Gutter to be Removed and Replaced as necessary for construction. No additional pay shall be made for this work, Subsidiary to other pay items.

N 1665433.55 E 1652226.28
 STA. 0+09.81, LINE 27 =
 STA. 1+41.81 GALENA, 22.00' LT.
 1-8" MJ BEND 11.25' (DEFLECT 4'25' RT.)
 TOTAL DEFLECTION = 15'40'

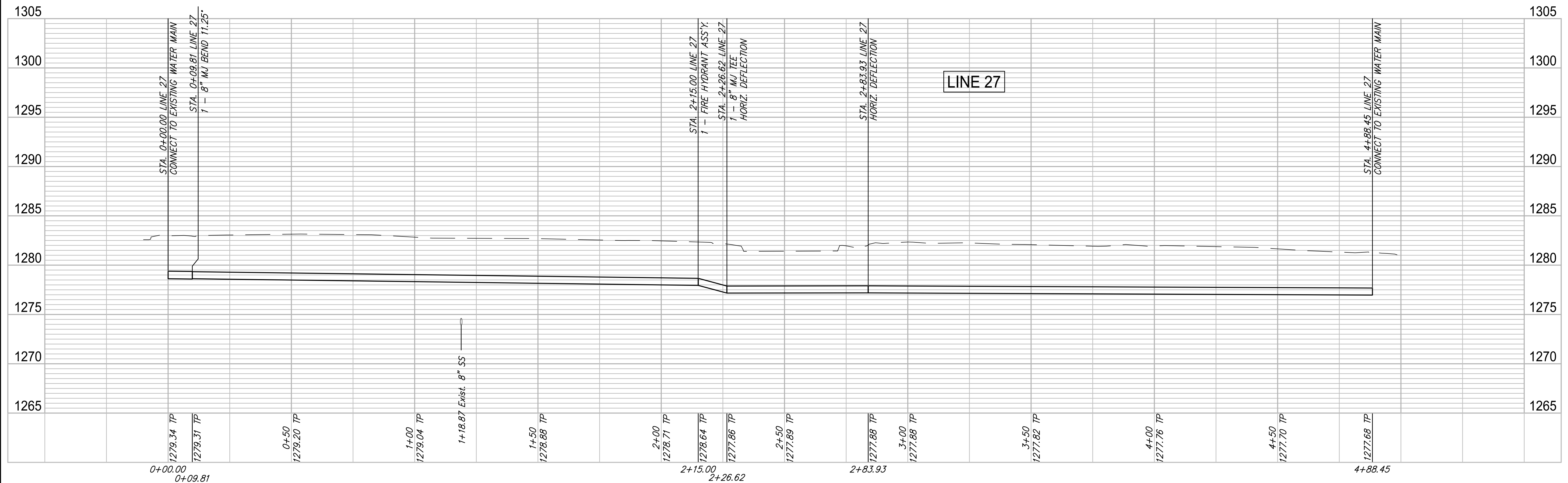
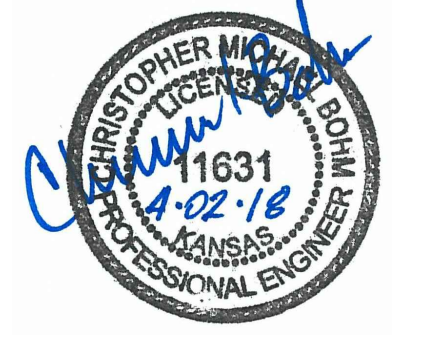
N 1665436.45E 1652443.07
 STA. 2+26.62, LINE 27 =
 STA. 0+00.00, LINE 26 =
 STA. 3+58.63, GALENA, 22.00 LT.
 1 - 8"x8" MJ TEE
 1 - 8" MJ GATE VALVE (N)
 DEFLECT PIPE 2' RT.

N 1665436.29 E 1652431.45
 STA. 2+15.00, LINE 27 =
 STA. 3+47.00 GALENA, 22.00' LT.
 1-FIRE HYDRANT ASS'Y. (S)
 L = 4'
 BURY LINE ELEV. 1282.27
 VALVE BOX ELEV. 1282.32

N 1665435.21 E 1652500.36
 STA. 2+83.93, LINE 27 =
 STA. 4+15.90 GALENA, 20.00' LT.
 DEFLECT PIPE 2' LT.

N 1665437.87 E 1652704.87
 STA. 4+88.45, LINE 27 =
 STA. 6+20.42 GALENA, 19.92' LT.
 REMOVE EXIST. BLOWOFF ASS'Y.
 CONNECT TO EXIST. 8" LINE
 Exist. 30' R/W

BL Station	Lt./Rt.	Service (Long or Short)	Address	As Built
3+32	Rt.	Long	3502 S. WASHINGTON	



ROSE MARIE WATER - Part B
Galena - Line 27
 Wichita, Kansas

PROJECT NUMBER: 448-30721
 DRAWING FILE: LINE 27 - Galena (Galena - Line 27)

DESIGN: CMB / RA
 DRAWN: DRS / RA

REVIEW: 5-24-2017
 DATE: 4/20/18

GARVER JOB SHEET: 16264701
 25 OF 53

GARVER
 524 N. MAIN
 WICHITA, KS 67203
 316.264-8000
 WWW.GARVERUSA.COM

F:\Projects\Projects 4700-4799\4701W (Rose Marie waterline replacement)\LINE 27 - Galena.dwg