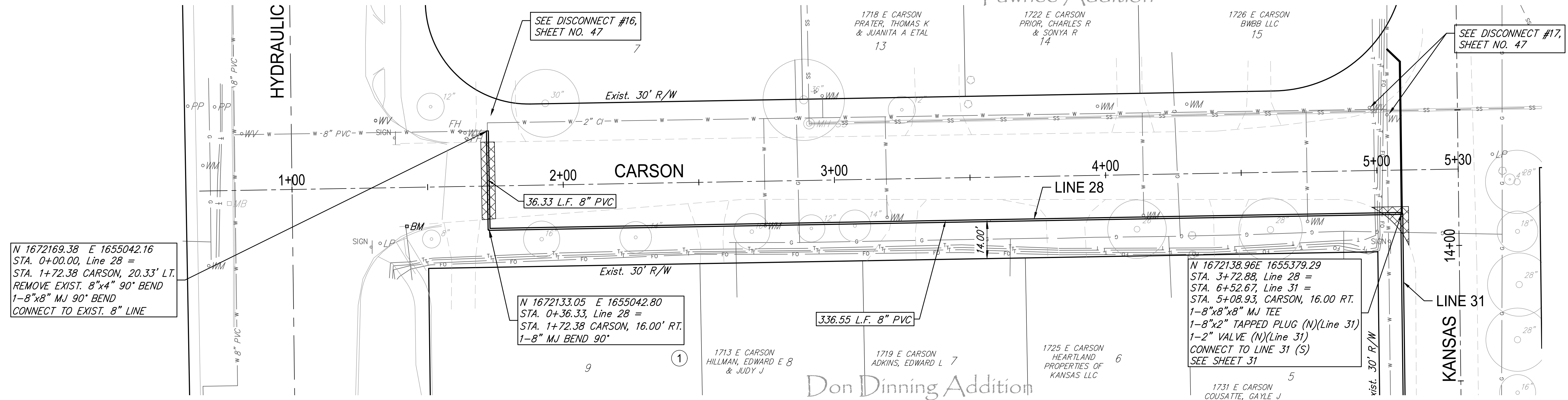


# Pawnee Addition



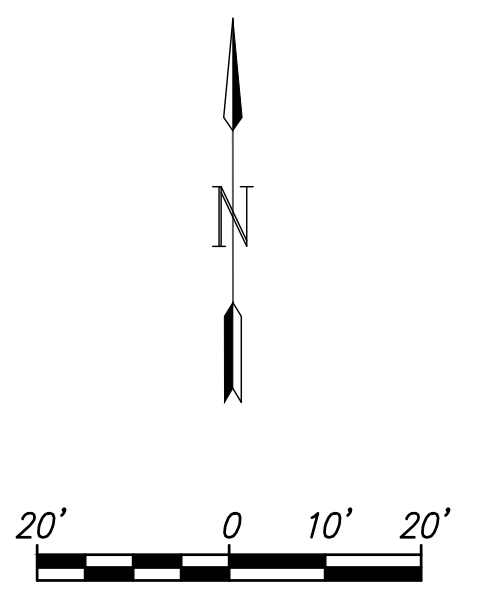
N 1672169.38 E 1655042.16  
 STA. 0+00.00, Line 28 =  
 STA. 1+72.38 CARSON, 20.33' LT.  
 REMOVE EXIST. 8"x4" 90° BEND  
 1-8"x8" MJ 90° BEND  
 CONNECT TO EXIST. 8" LINE

N 1672133.05 E 1655042.80  
 STA. 0+36.33, Line 28 =  
 STA. 1+72.38 CARSON, 16.00' RT.  
 1-8" MJ BEND 90°

336.55 L.F. 8" PVC

N 1672138.96 E 1655379.29  
 STA. 3+72.88, Line 28 =  
 STA. 6+52.67, Line 31 =  
 STA. 5+08.93, CARSON, 16.00 RT.  
 1-8"x8"x8" MJ TEE  
 1-8"x2" TAPPED PLUG (N)(Line 31)  
 1-2" VALVE (N)(Line 31)  
 CONNECT TO LINE 31 (S)  
 SEE SHEET 31

SEE DISCONNECT #17,  
 SHEET NO. 47



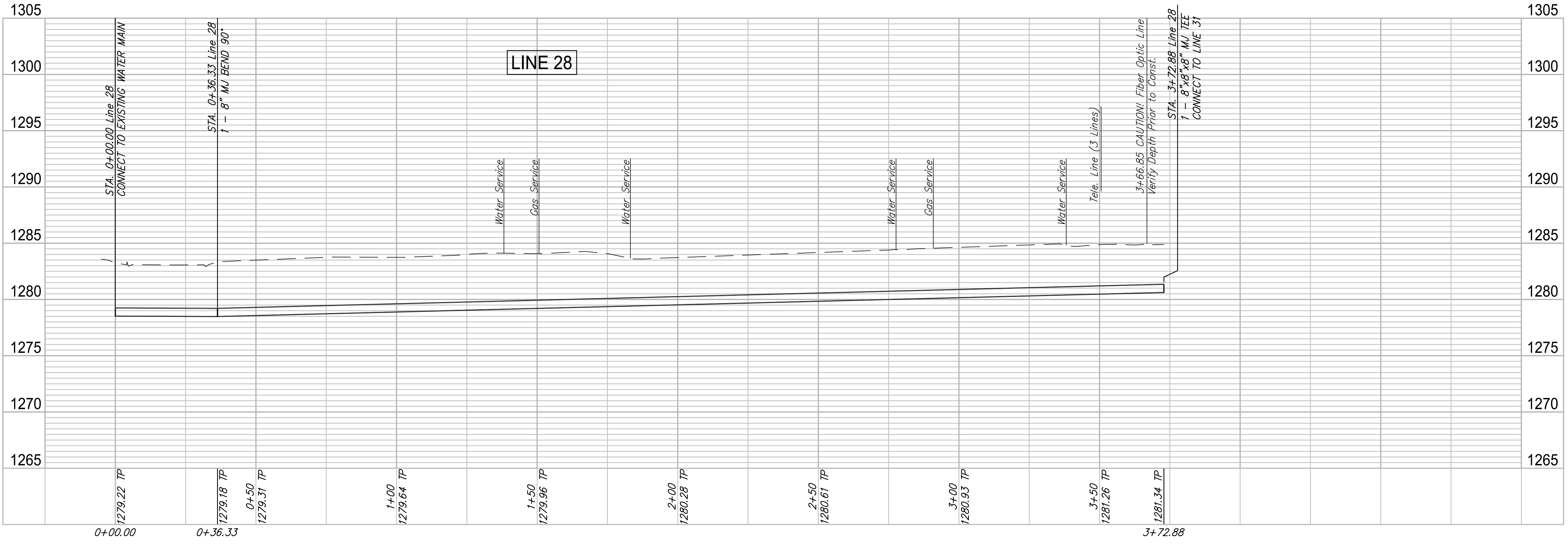
Existing Gravel to be Removed and Replaced as necessary for construction. No additional pay shall be made for this work, Subsidiary to other pay items.

Existing Pavement, Curb and Gutter to be Removed and Replaced as necessary for construction. No additional pay shall be made for this work, Subsidiary to other pay items.

WATER METER SUMMARY				
BL Station	Lt./Rt.	Service (Long or Short)	Address	As Built
2+74	Rt.	Short	1713 E CARSON	
2+96	Lt.	Long	1718 E CARSON	
3+19	Rt.	Short	1719 E CARSON	
3+97	Lt.	Long	1722 E CARSON	
4+14	Rt.	Short	1725 E CARSON	
4+30	Lt.	Long	1726 E CARSON	
4+74	Rt.	Short	1731 E CARSON	



GARVER  
 924 N. MAIN  
 WICHITA, KS 67203  
 316.264.8000  
 WWW.GARVERUSA.COM



REVIEW	5-24-2017
DESIGN	CMB / RA
PROJECT NUMBER	448-30721
DRAWING FILE	4701W Engineering Base Area 2
DATE	4/2/2018
DRAWN	DRS / RA

ROSE MARIE WATER - Part B  
**Carson - Line 28**  
 Wichita, Kansas