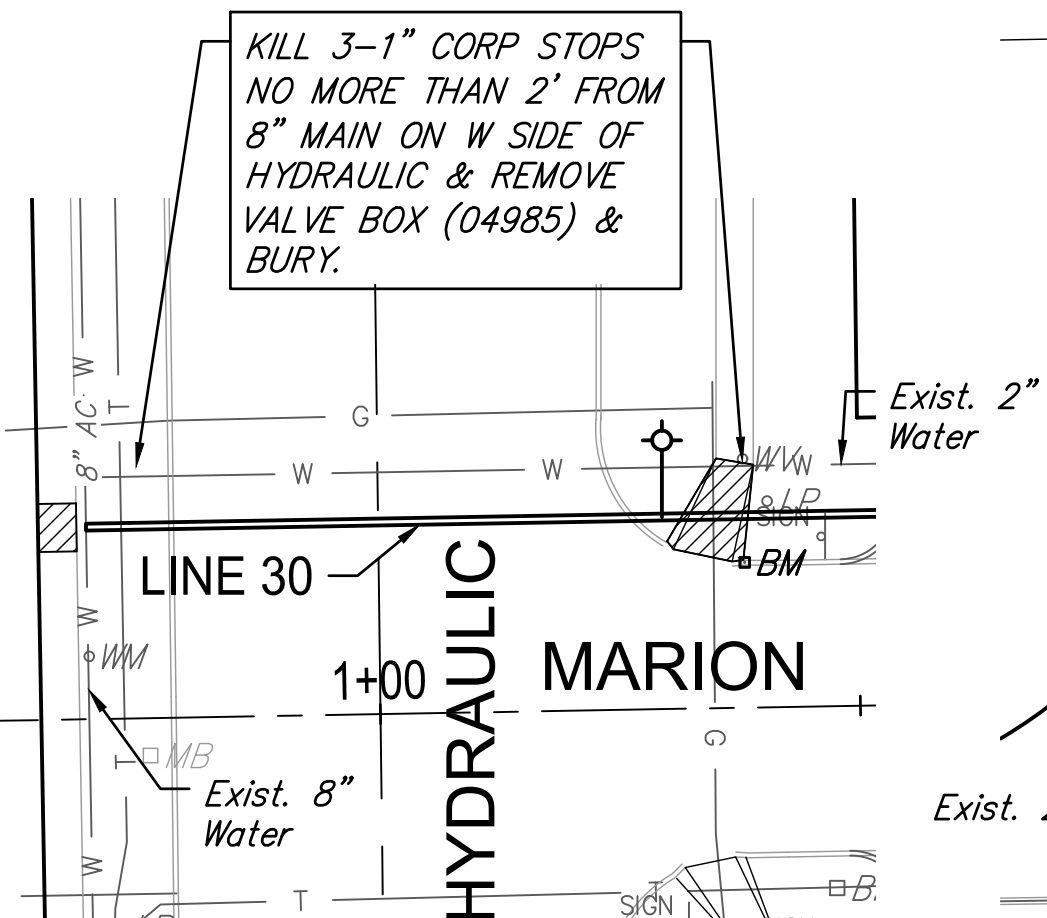
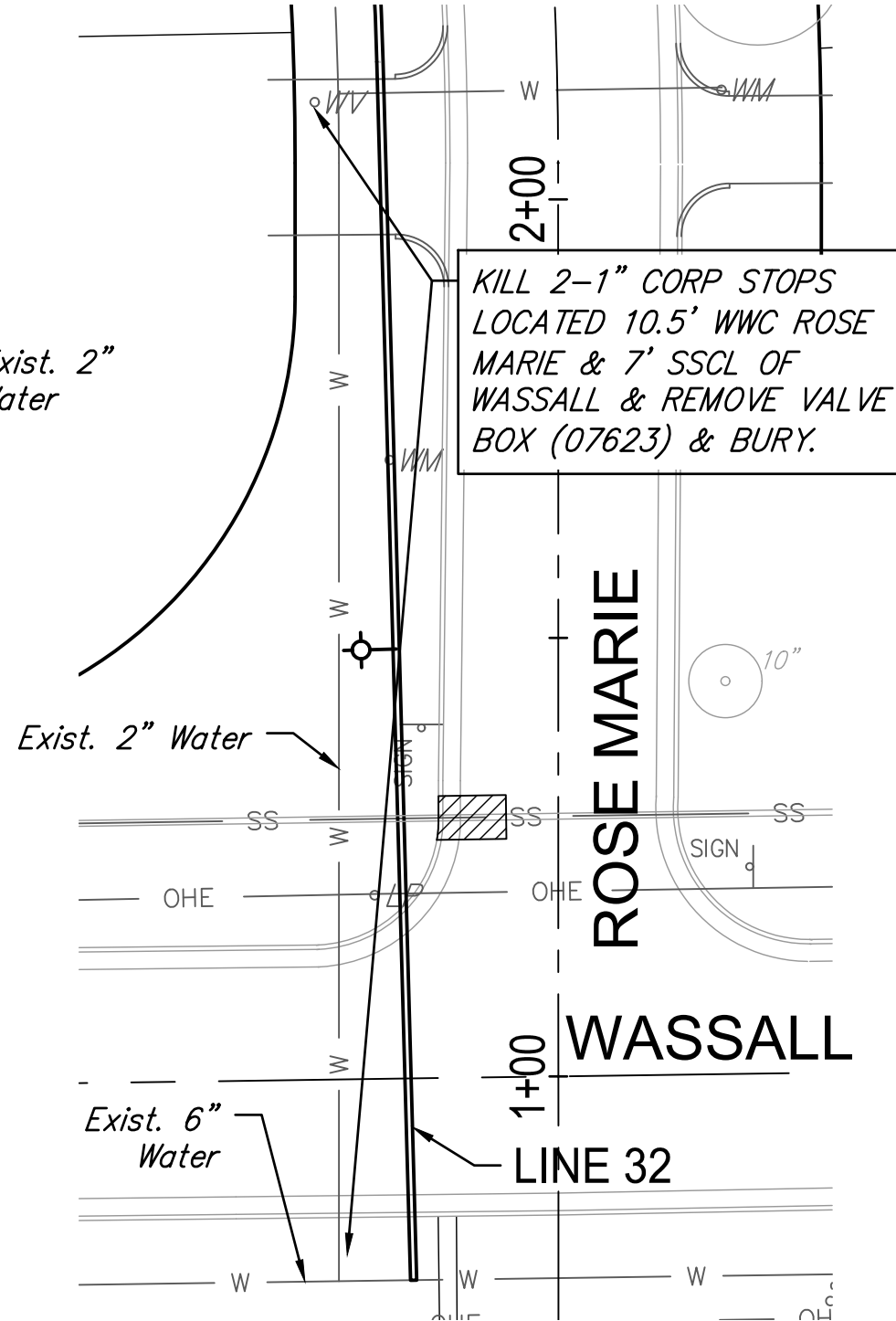


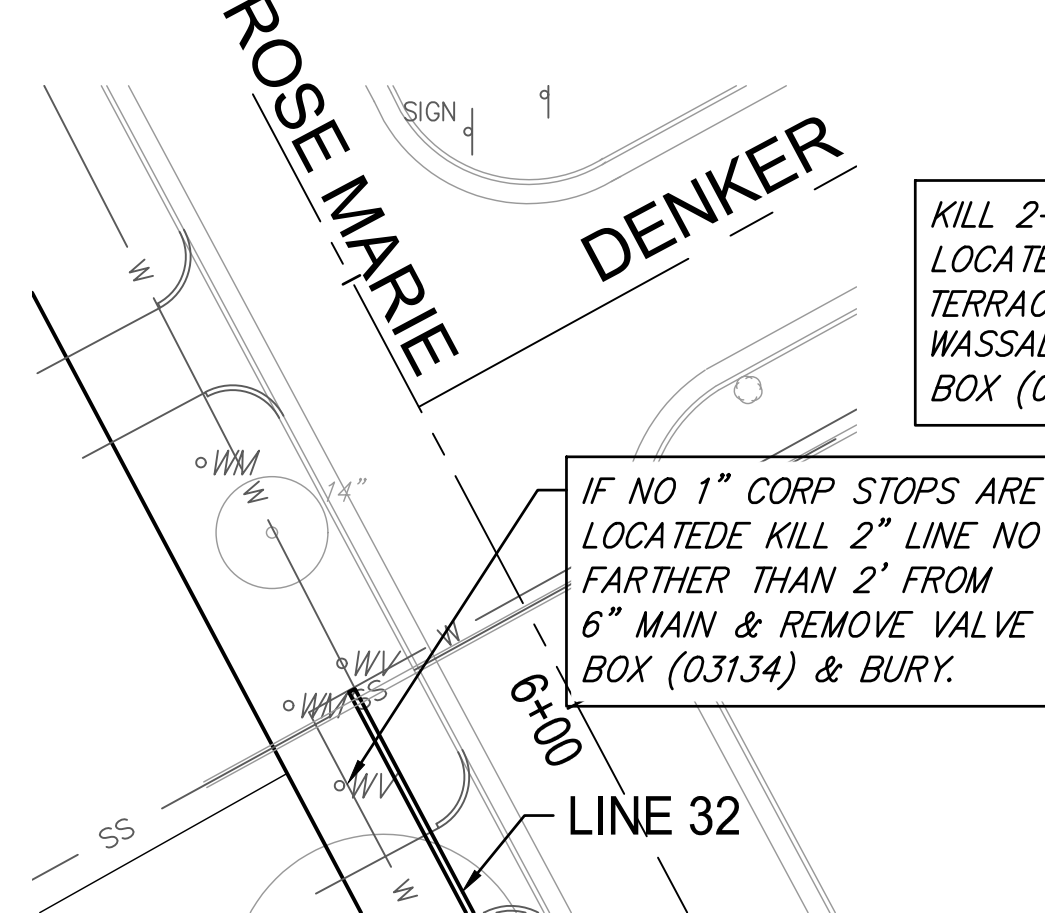
SCOTT & KANSAS
DISCONNECT #19



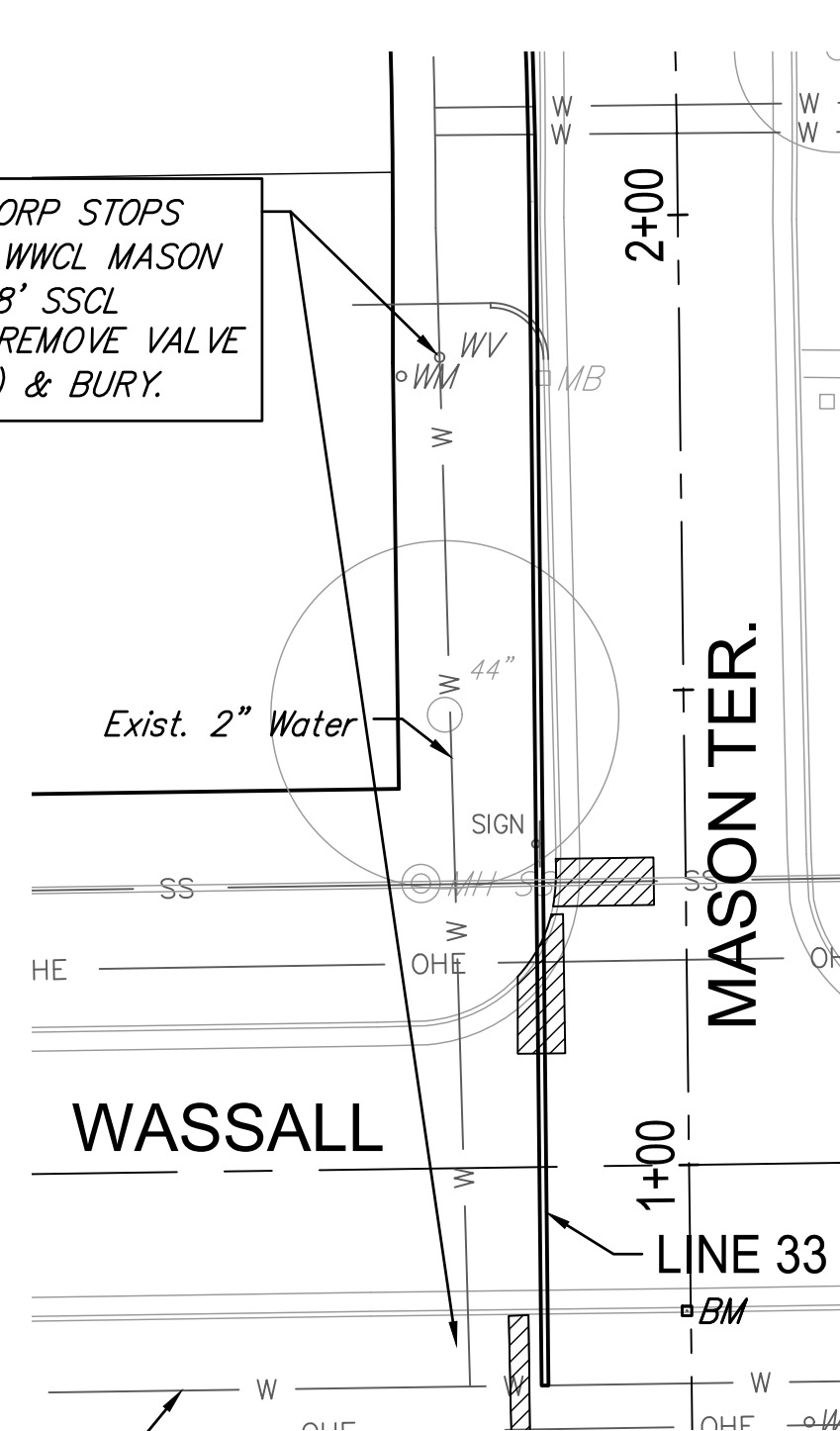
MARION & HYDRAULIC
DISCONNECT #20



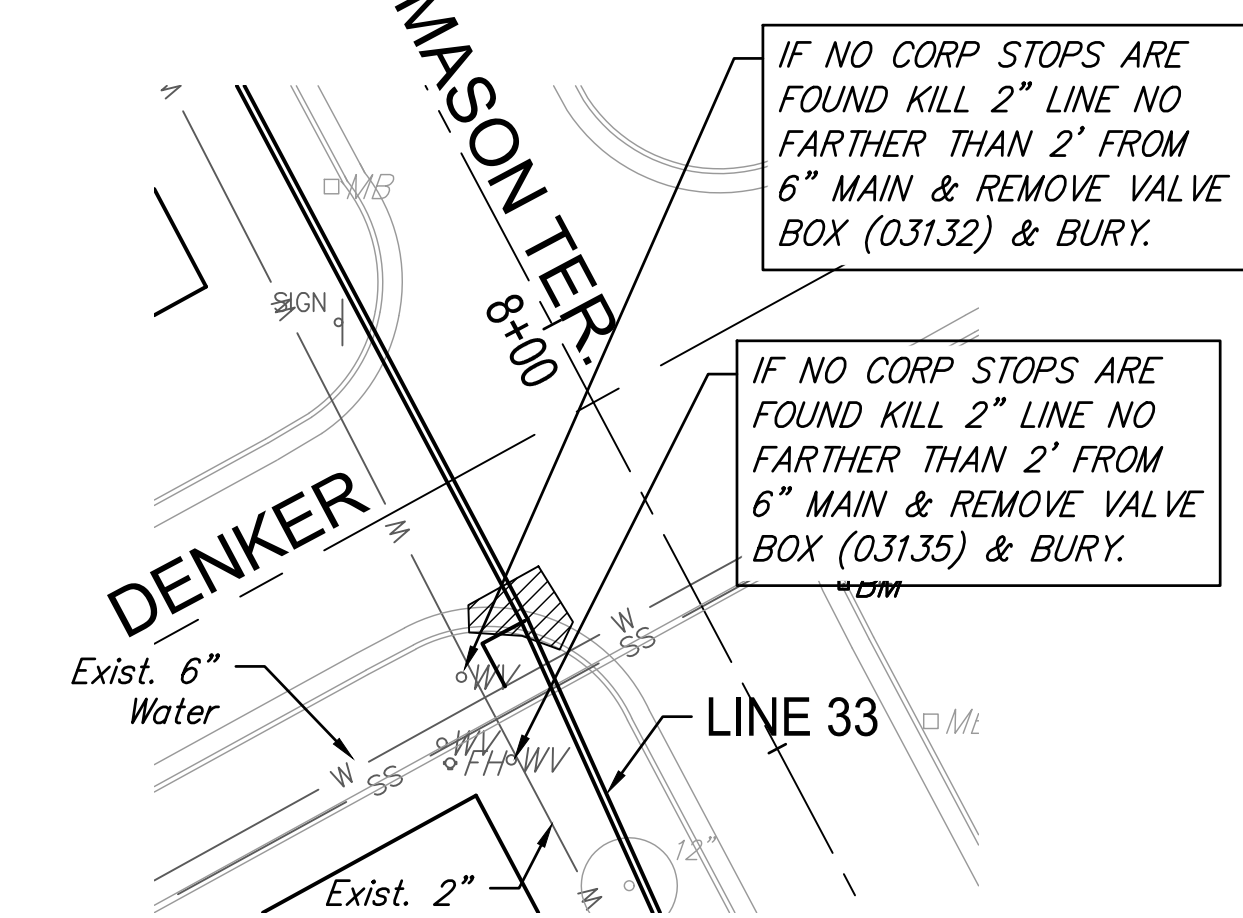
WASSALL & ROSE MARIE
DISCONNECT #21



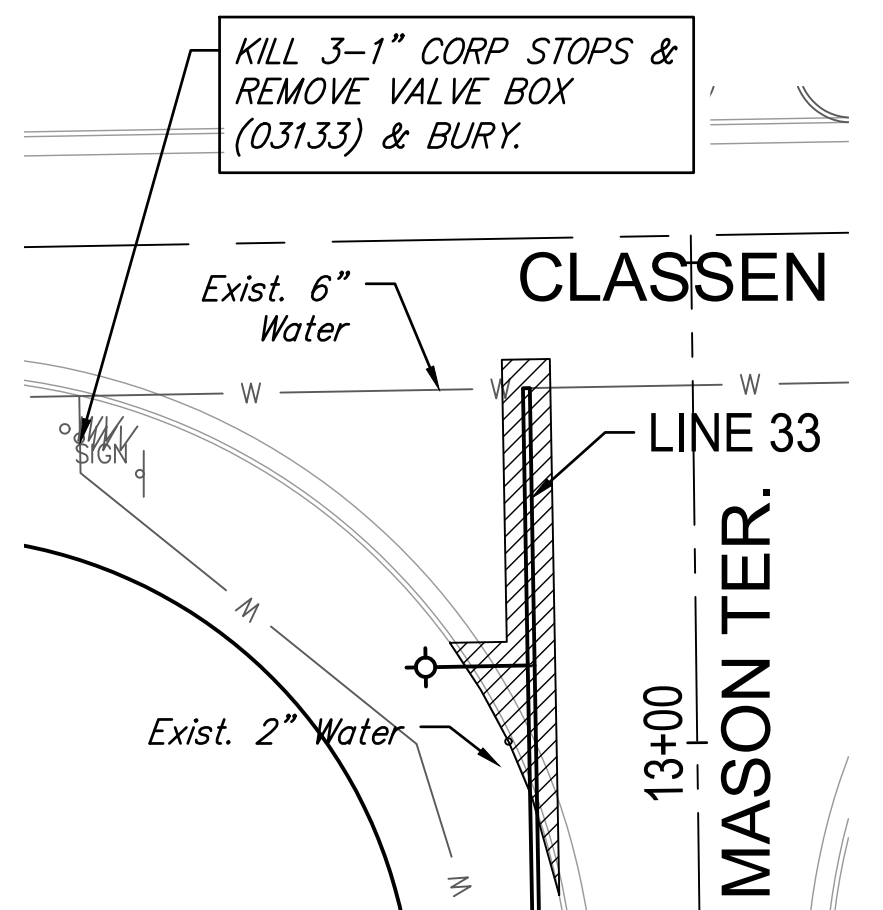
ROSE MARIE & DENKER
DISCONNECT #22



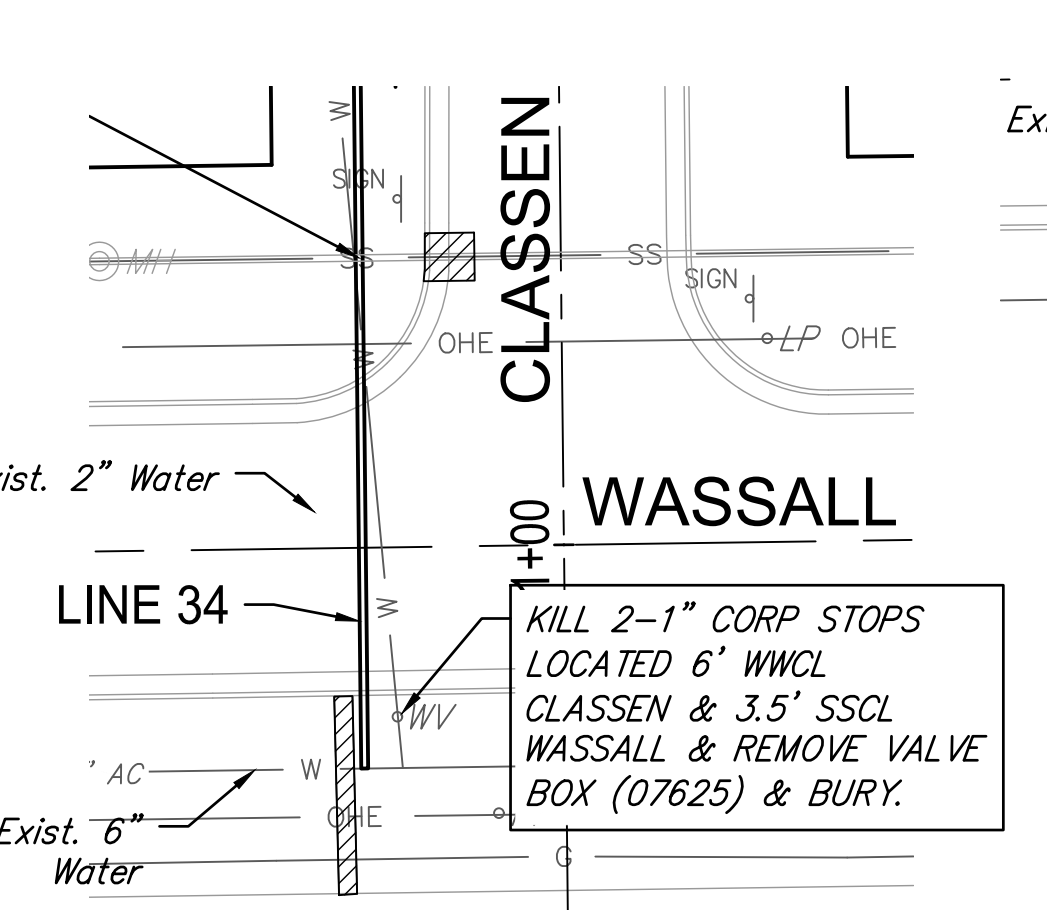
WASSALL & MASON TER.
DISCONNECT #23



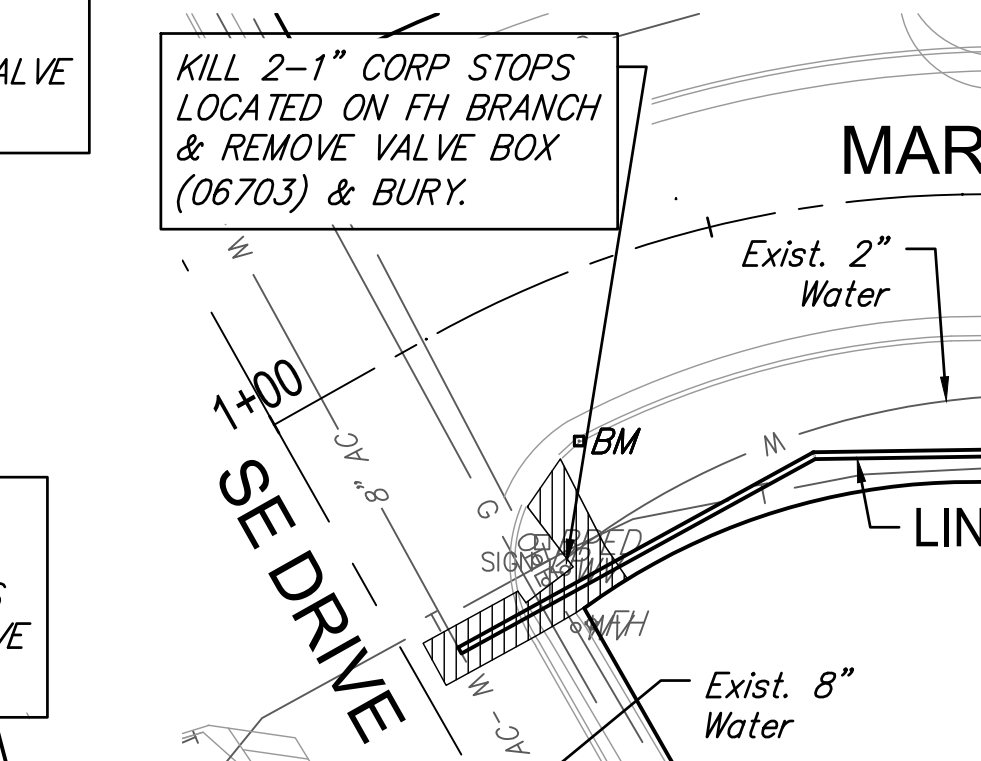
MASON TER. & DENKER
DISCONNECT #24



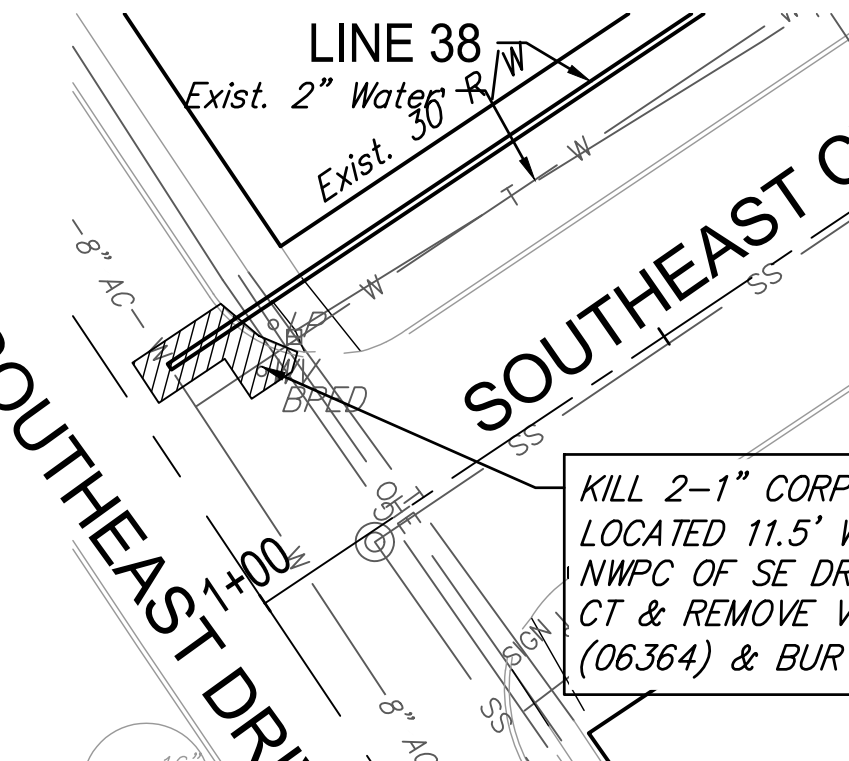
CLASSEN & MASON TER.
DISCONNECT #25



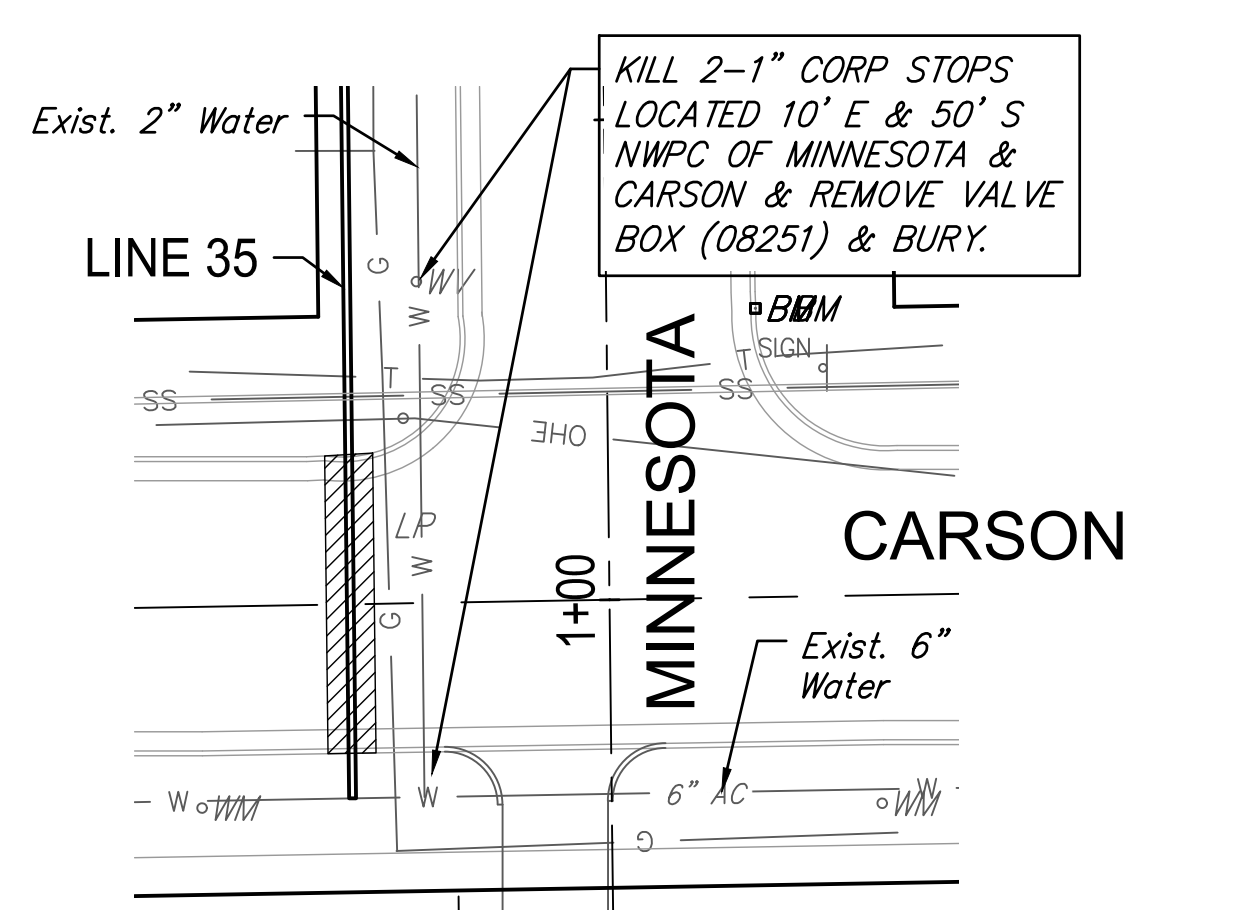
WASSALL & CLASSEN
DISCONNECT #26



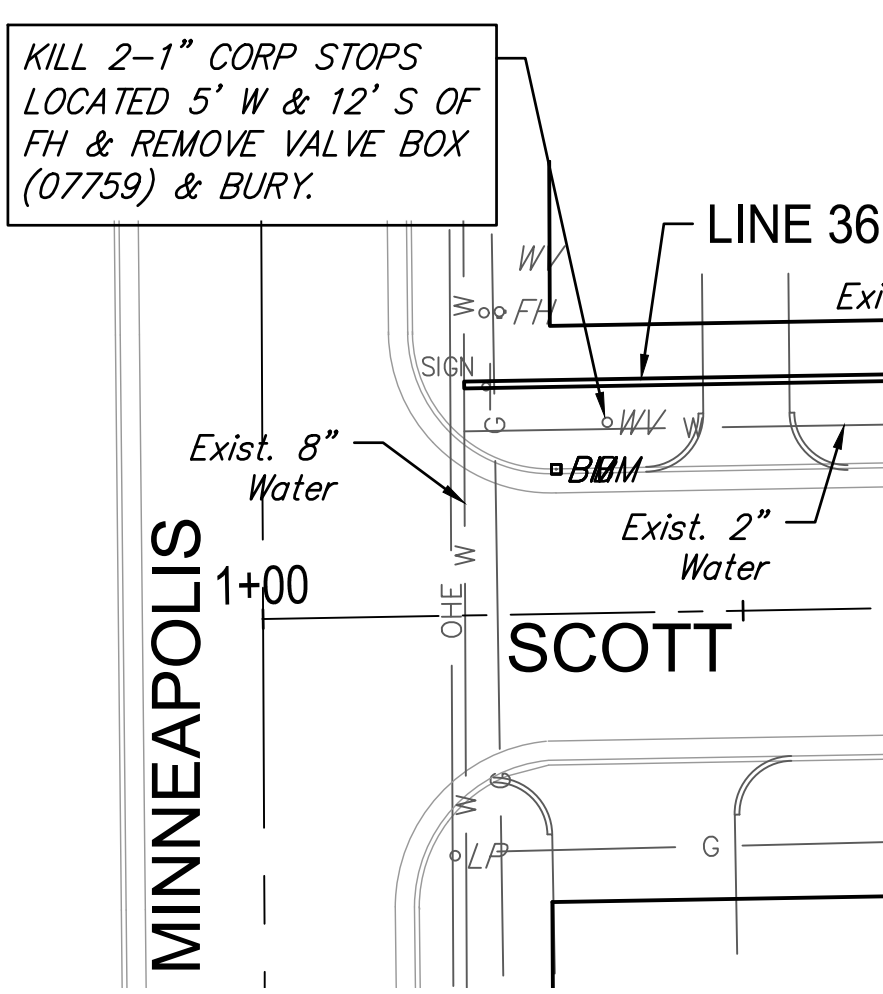
CLASSEN & DENKER
DISCONNECT #27



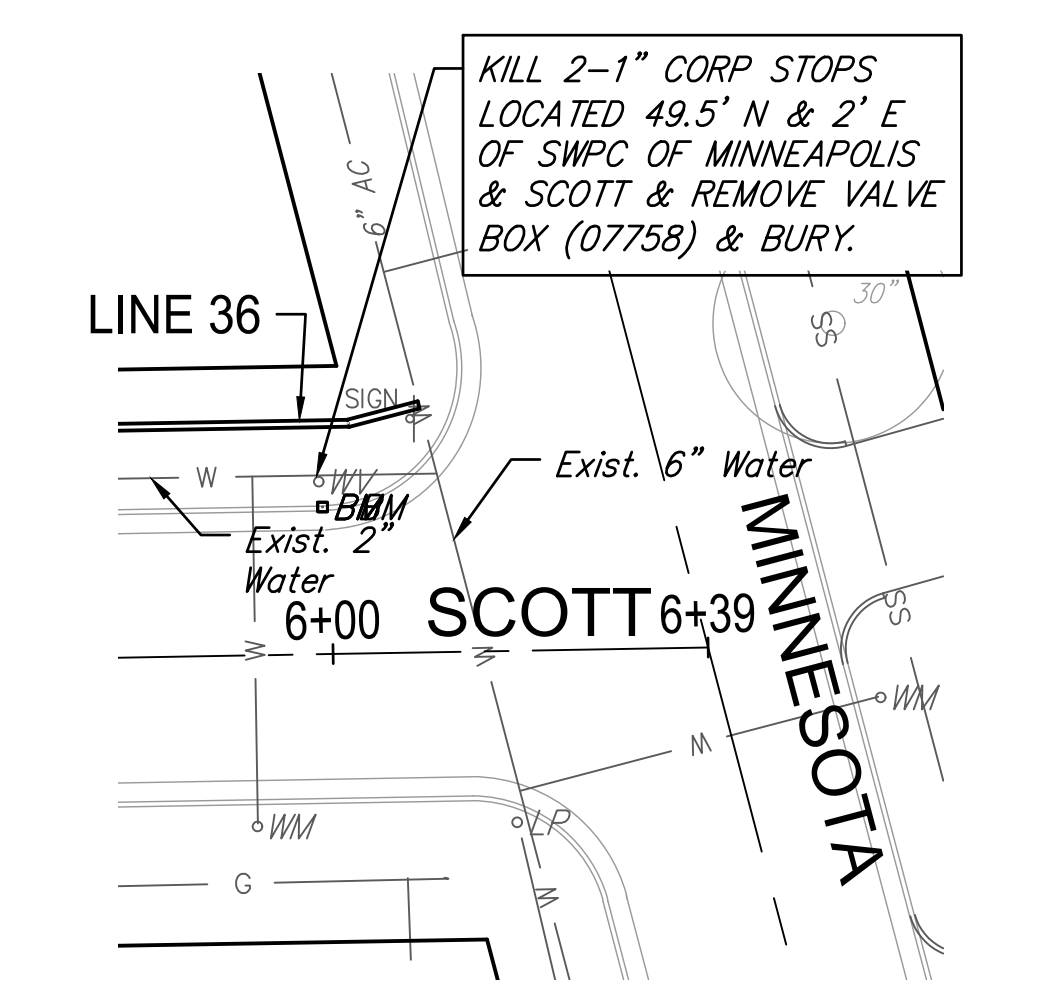
SOUTHEAST CT & SOUTHEAST DRIVE
DISCONNECT #33



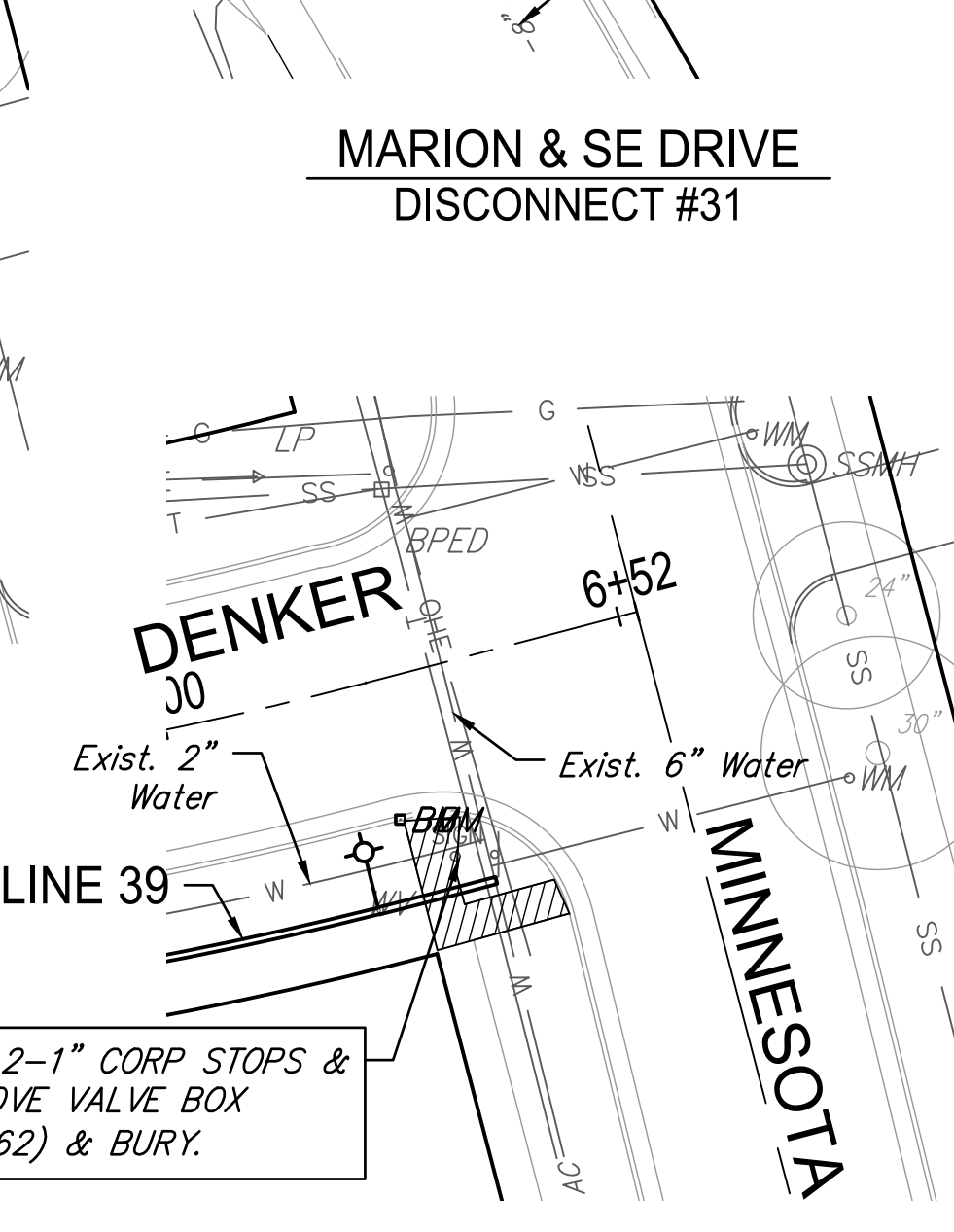
MINNESOTA & CARSON
DISCONNECT #28



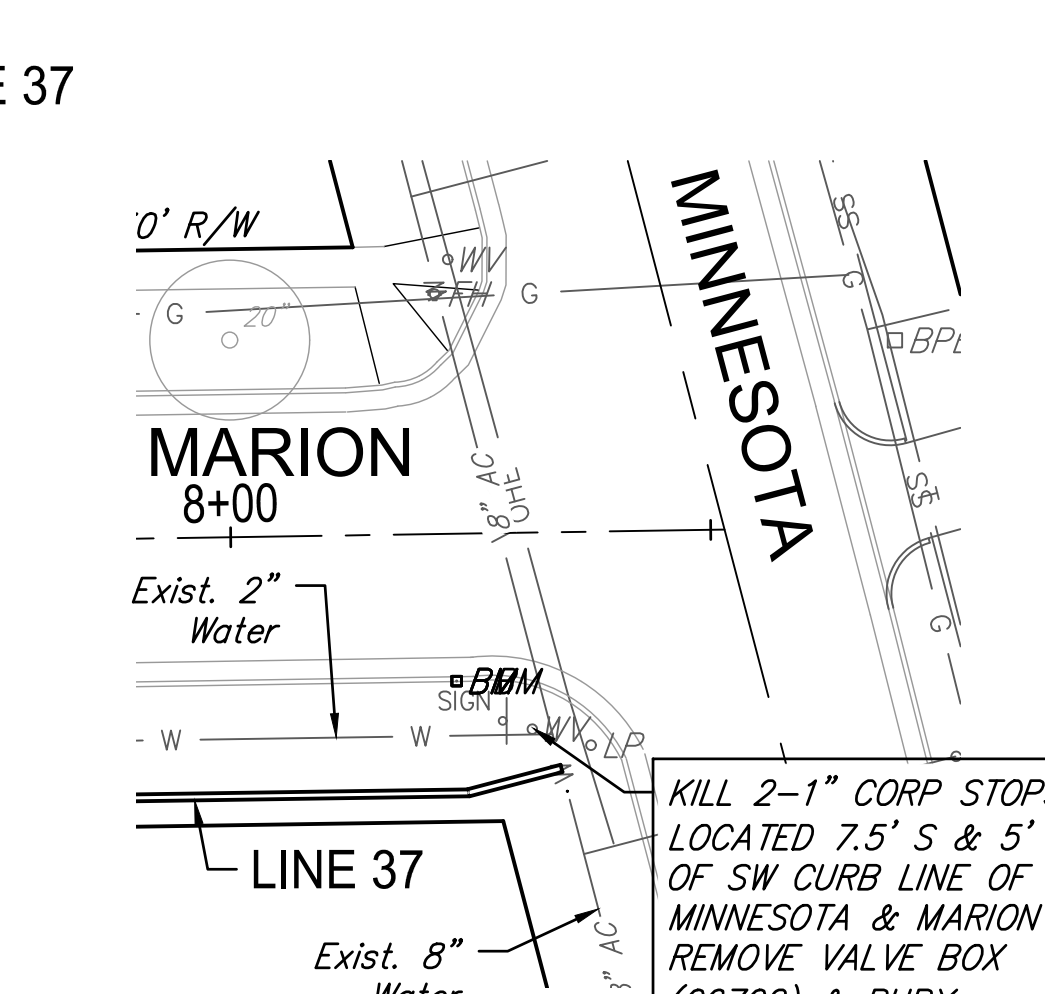
SCOTT & MINNEAPOLIS
DISCONNECT #29



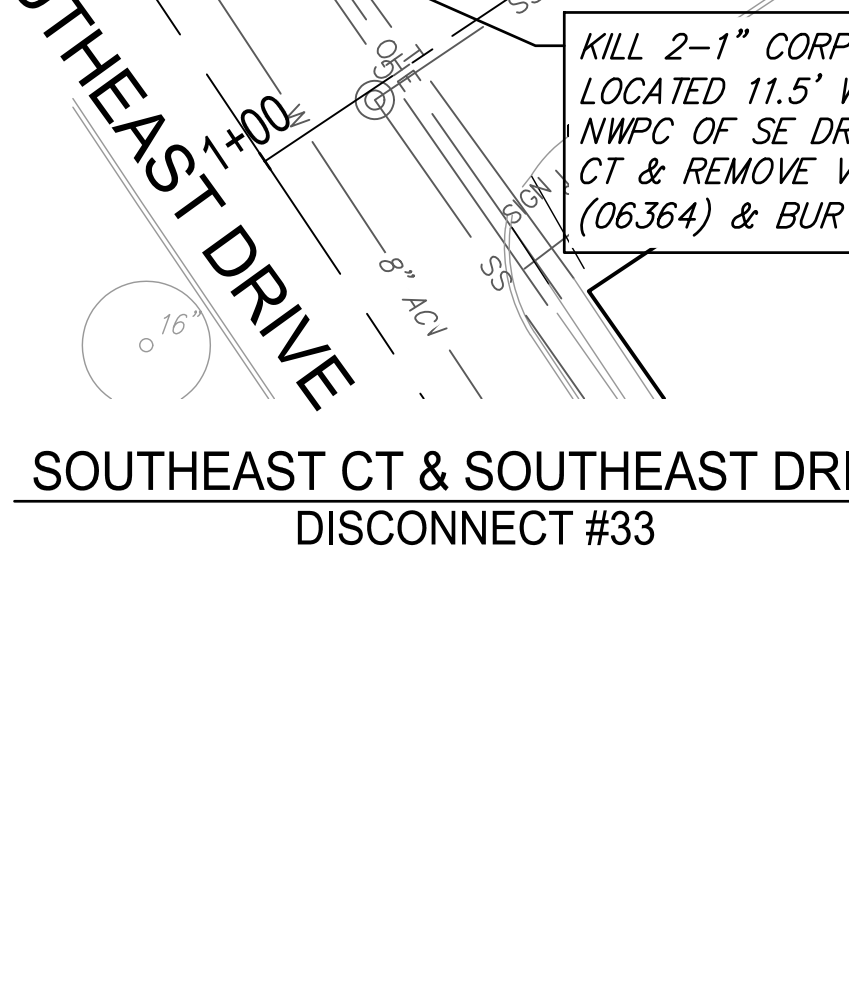
SCOTT & MINNESOTA
DISCONNECT #30



MARION & SE DRIVE
DISCONNECT #31



MARION & MINNESOTA
DISCONNECT #32

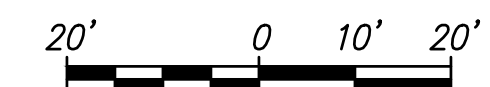


DENKER & SOUTHEAST DRIVE
DISCONNECT #34



DENKER & MINNESOTA
DISCONNECT #35

F:\Projects\Projects 4700-4799\4701W (Rose Marie waterline replacement)\4701W Disconnects Part B.dwg



Existing Pavement, Curb and Gutter to be Removed and Replaced as necessary for construction. No additional pay shall be made for this work, *Subsidiary* to other pay items.

ROSE MARIE WATER - Part B			
Part B Water Line Disconnects 2			
		GARVER 924 N. MAIN WICHITA, KS 67203 316-264-8008 WWW.GARVERUSA.COM	
		PROJECT NUMBER 448-90721	GARVER JOB NO. 16264701
DRAWING FILE 4701W Disconnects Part B [Part B Water Line Disconnects 2]	SHEET 48	OF 53	DESIGN CMB / RA DRAWN DRS / RA REVIEW 5-24-2017