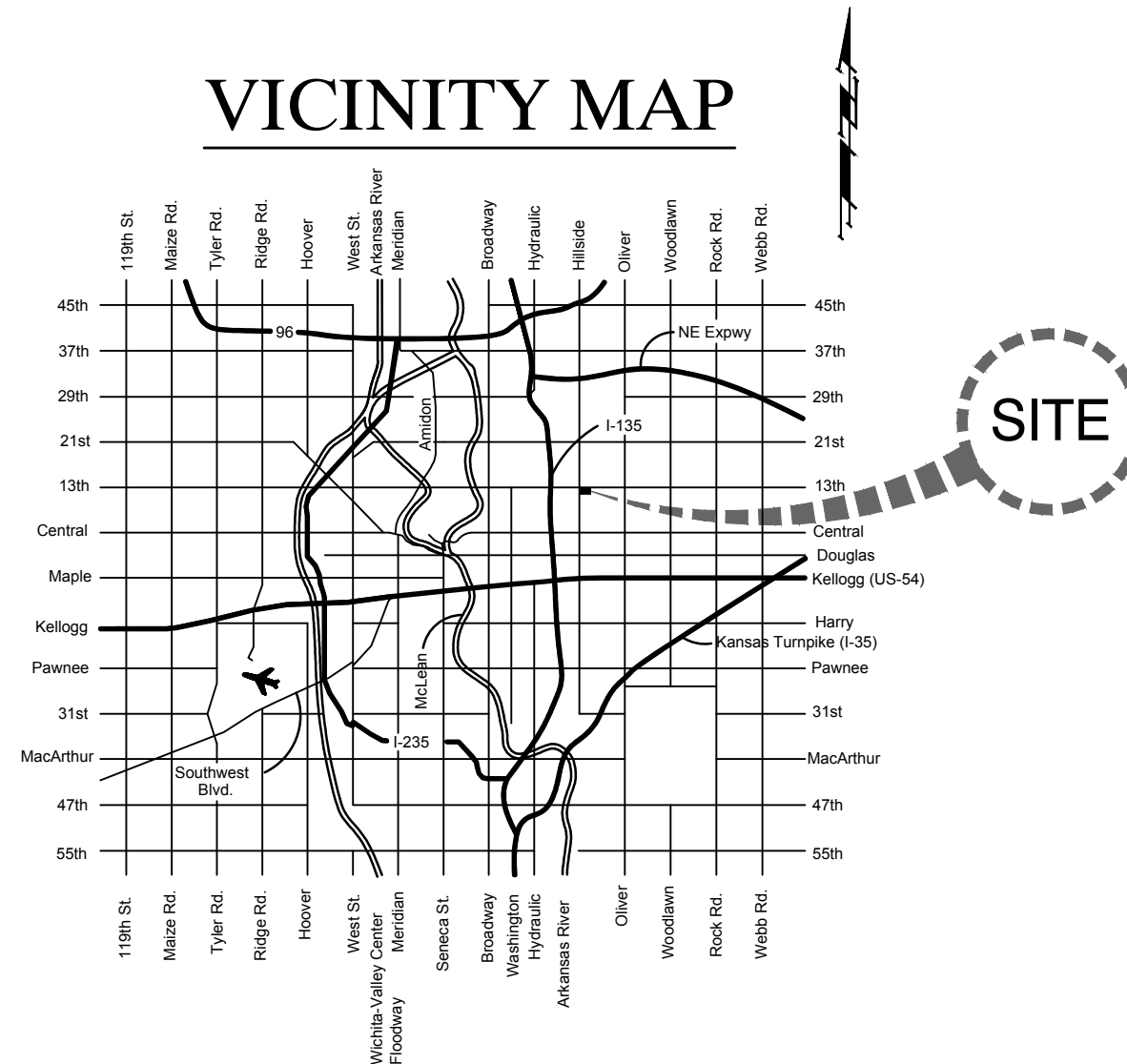


WATER MAIN AND SANITARY SEWER IMPROVEMENTS
TO SERVE

FAIRMOUNT PARK ADDITION

FOR
SEDGWICK COUNTY, KANSAS
THE CITY OF WICHITA,
Gary Janzen, P.E., City Engineer

VICINITY MAP



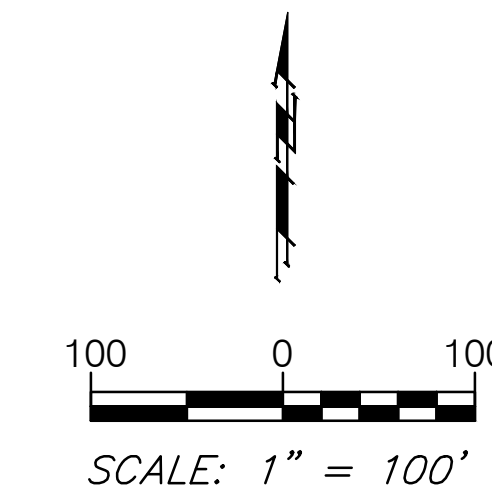
Index

1	Title Sheet
2	Notepage
3-4	Sanitary Sewer Line 1
5	Sanitary Sewer Line 2
6-9	Water Line 1
10	Water Line 2
11	Water Line 3
12	Water Line 4
13-17	Standard Details
18	Water Meter Table & Paving Details
19	Wheel Chair Ramp Details
20-24	Erosion Control Details

Mayer/Dutton Construction - Contractor
J. Wagner - City of Wichita, Field Project Engineer
M. Thom - City of Wichita, Inspector
Asbuilt
Release Date: 12/20/2018
Completion Date: 8/21/2020
pdf: 12/21/2018 apr

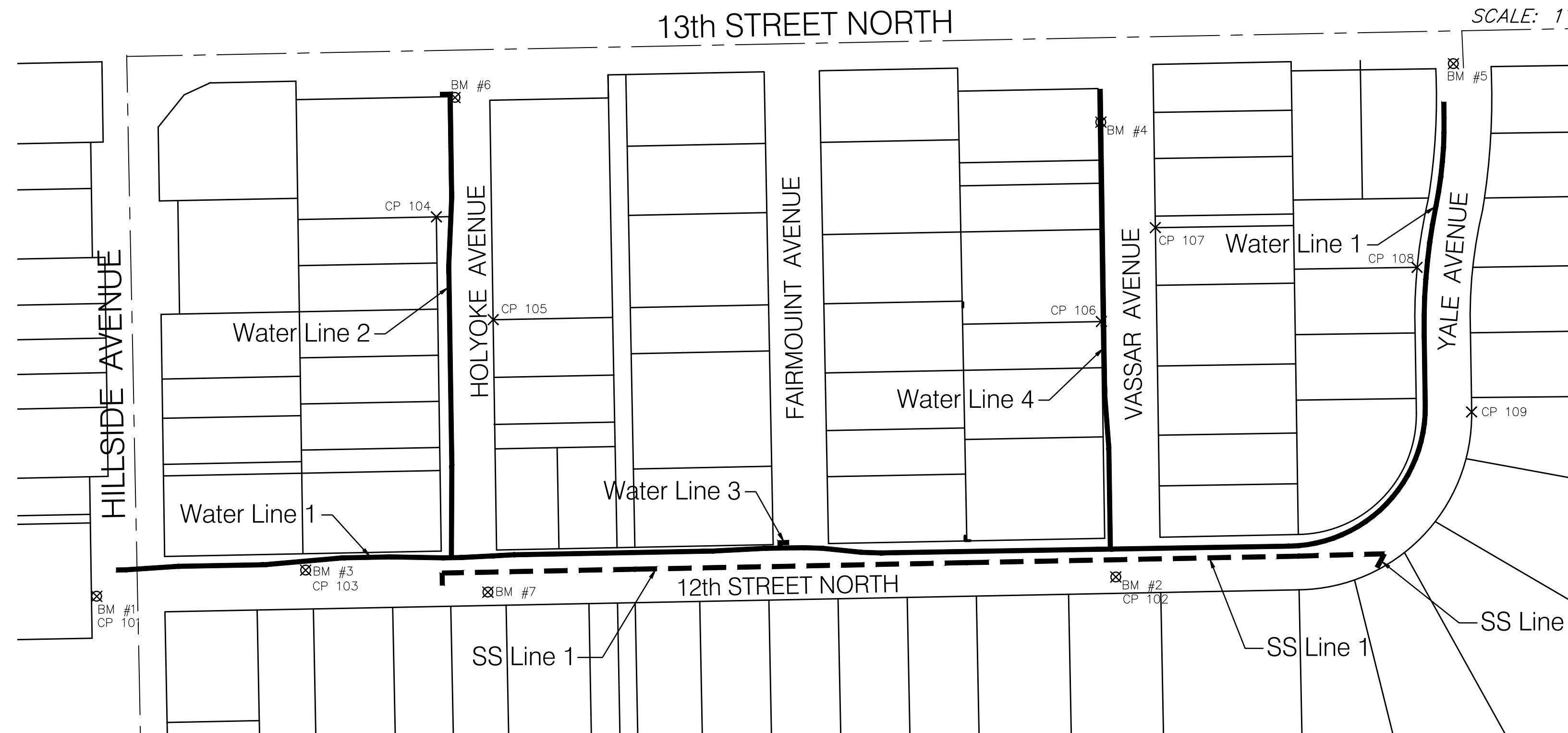
~~WATER~~
~~City Project No. - 448-90766~~
~~O.C.A. No. - 636438~~

SANITARY SEWER
City Project No. - 468-85158
O.C.A. No. - 620865



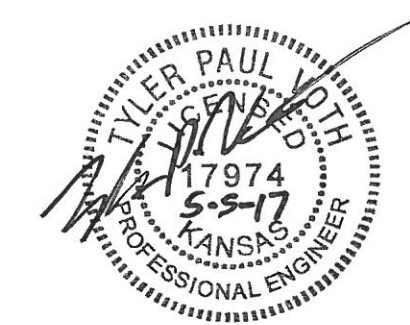
BENCHMARKS:

- BM #1 - Chiseled "X" in the Northwest Corner of the South Drive to 1305 N. Hillside.
Elev. = 1358.70 (NAVD 88)
- BM #2 - Chiseled "X" in the South Lane of 12th Street North Just West of the Walk to 3501 E. 12th Street North.
Elev. = 1358.70 (NAVD 88)
- BM #3 - Mag Nail Near the North High Edge of 12th Street North 1/2 Block East of Hillside.
Elev. = 1361.11 (NAVD 88)
- BM #4 - Chiseled "X" in the Sidewalk on the West Side of Vassar Avenue 12' South of the Walk to 1337 N. Vassar.
Elev. = 1376.30 (NAVD 88)
- BM #5 - Chiseled "X" at the Centerline of the Wheel Chair Ramp in the West Side of the Valley Gutter at Yale Avenue.
Elev. = 1360.92 (NAVD 88)
- BM #6 - Chiseled "□" on the Top of Curb at the Southwest Curb Return of the Holyoke Avenue Valley Gutter.
Elev. = 1367.28 (NAVD 88)
- BM #7 - Chiseled "□" on the Top of Curb at the Northwest Curb Return of the Driveway to 3237 E. 12th Street North.
Elev. = 1357.22 (NAVD 88)



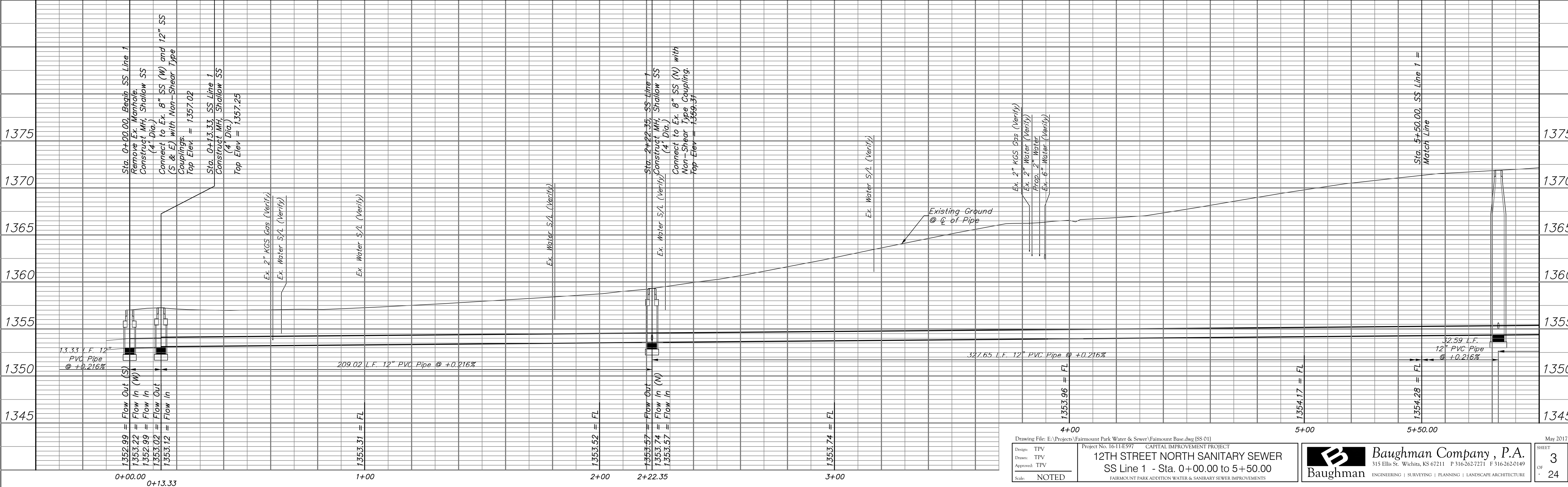
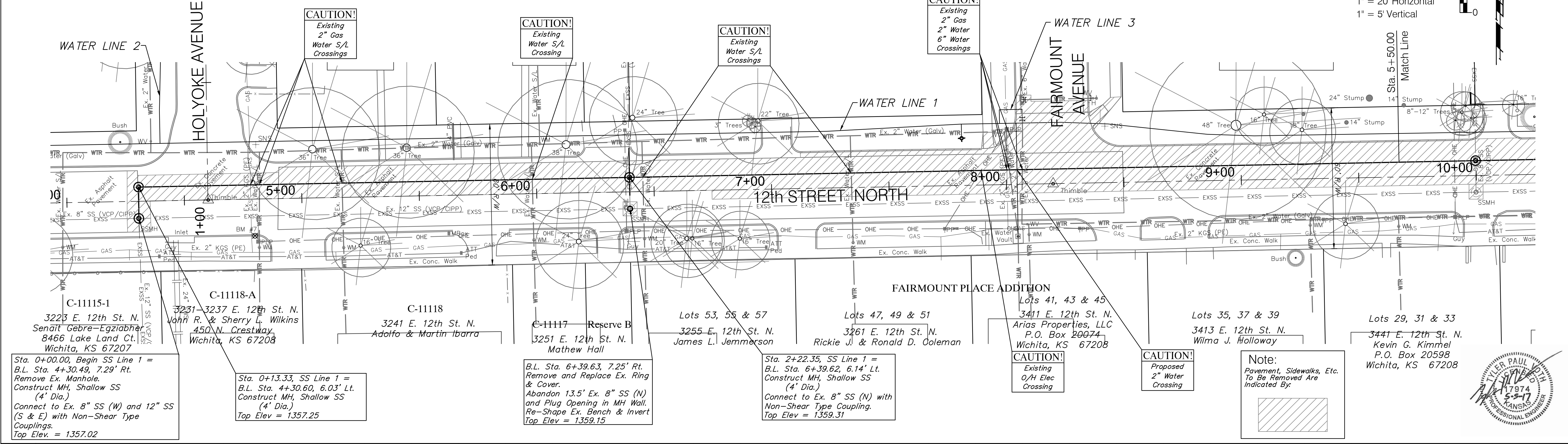
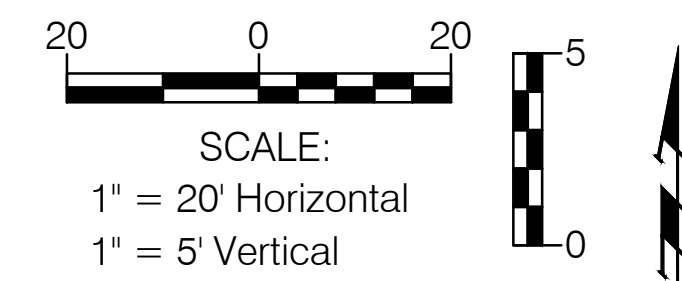
CONTROL POINTS:

- | | |
|--|---|
| CP #101 - Chiseled "X"
BL Sta. 0+55.55, 11.93' Rt.
N-1693247.61
E-1659711.36 | CP #106 - 1" Steel Bar
BL Sta. 3+64.81, 30.06' Lt.
N-1693545.53
E-1660800.89 |
| CP #102 - Mag Nail
BL Sta. 11+60.98, 12.33' Rt.
N-1693268.52
E-1660816.59 | CP #107 - #4 Rebar w/ Baughman Cap
BL Sta. 4+65.41, 30.28' Rt.
N-1693647.02
E-1660859.72 |
| CP #103 - Chiseled "X"
BL Sta. 2+82.67, 12.02' Lt.
N-1693275.94
E-1659937.97 | CP #108 - 1/2" Iron Pipe
BL Sta. 16+97.21, 30.13' Lt.
N-1693533.31
E-1661141.03 |
| CP #104 - #4 Rebar w/ Savoy Cap
BL Sta. 4+92.52, 29.89' Lt.
N-1693659.37
E-1660079.29 | CP #109 - #5 Rebar
BL Sta. 16+10.58, 29.96' Rt.
N-1693447.58
E-1661202.40 |
| CP #105 - Nail in 1" Iron Pipe
BL Sta. 3+79.92, 29.99' Rt.
N-1693547.67
E-1660141.34 | |



May 2017

BENCHMARK:
 BM #7 - Chiseled "C" on the Top of Curb at the Northwest Curb
 Return of the Driveway to 3237 E. 12th Street North.
 Elev. = 1357.22 (NAVD 88)



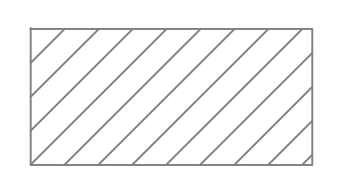
Sta. 0+00.00, Begin SS Line 1 = B.L. Sta. 4+30.49, 7.29' Rt. Remove Ex. Manhole. Construct MH, Shallow SS (4' Dia.) Connect to Ex. 8" SS (W) and 12" SS (S & E) with Non-Shear Type Couplings. Top Elev. = 1357.02

Sta. 0+13.33, SS Line 1 = B.L. Sta. 4+30.60, 6.03' Lt. Construct MH, Shallow SS (4' Dia.) Top Elev = 1357.25

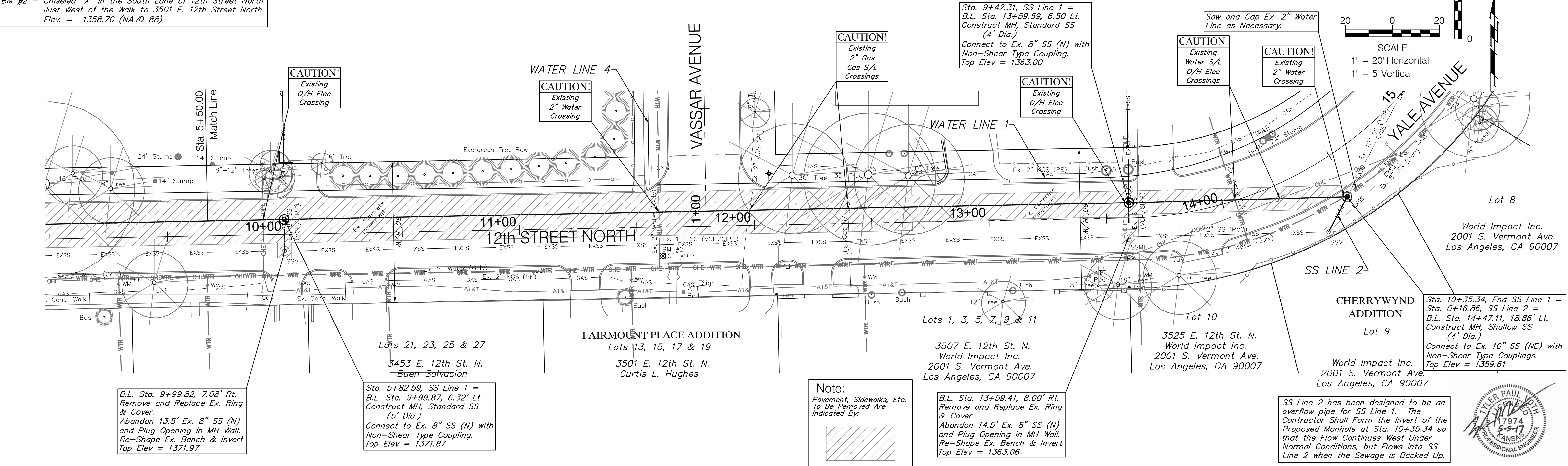
B.L. Sta. 6+39.63, 7.25' Rt. Remove and Replace Ex. Ring & Cover. Abandon 13.5' Ex. 8" SS (N) and Plug Opening in MH Wall. Re-Shape Ex. Bench & Invert Top Elev = 1359.15

Sta. 2+22.35, SS Line 1 = B.L. Sta. 6+39.62, 6.14' Lt. Construct MH, Shallow SS (4' Dia.) Connect to Ex. 8" SS (N) with Non-Shear Type Coupling. Top Elev = 1359.31

Note:
 Pavement, Sidewalks, Etc. To Be Removed Are Indicated By:




BENCHMARK:
 BM #2 - Chiseled "X" in the South Lane of 12th Street North
 Just West of the Walk to 3501 E. 12th Street North.
 Elev. = 1358.70 (NAVD 88)



B.L. Sta. 9+99.82, 7.08' Rt.
 Remove and Replace Ex. Ring
 & Cover.
 Abandon 13.5' Ex. 8" SS (N)
 and Plug Opening in MH Wall.
 Re-Shape Ex. Bench & Invert
 Top Elev = 1371.97

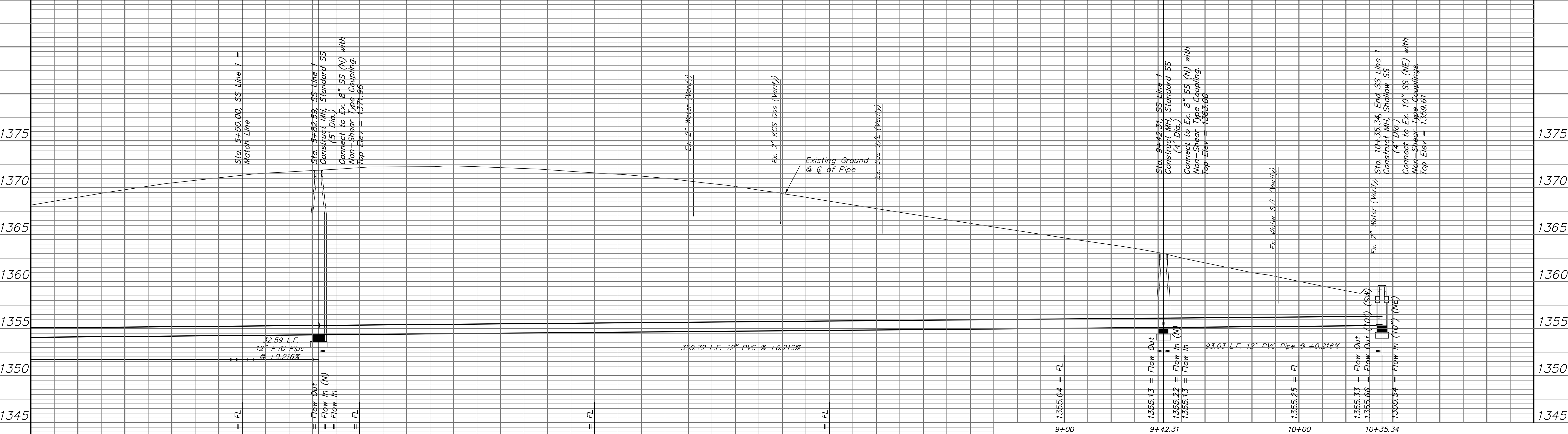
Sta. 5+82.59, SS Line 1 =
 B.L. Sta. 9+99.87, 6.32' Lt.
 Construct MH, Standard SS
 (5' Dia.)
 Connect to Ex. 8" SS (N) with
 Non-Shear Type Coupling.
 Top Elev = 1371.87

Note:
 Pavement, Sidewalks, Etc.
 To Be Removed Are
 Indicated By:

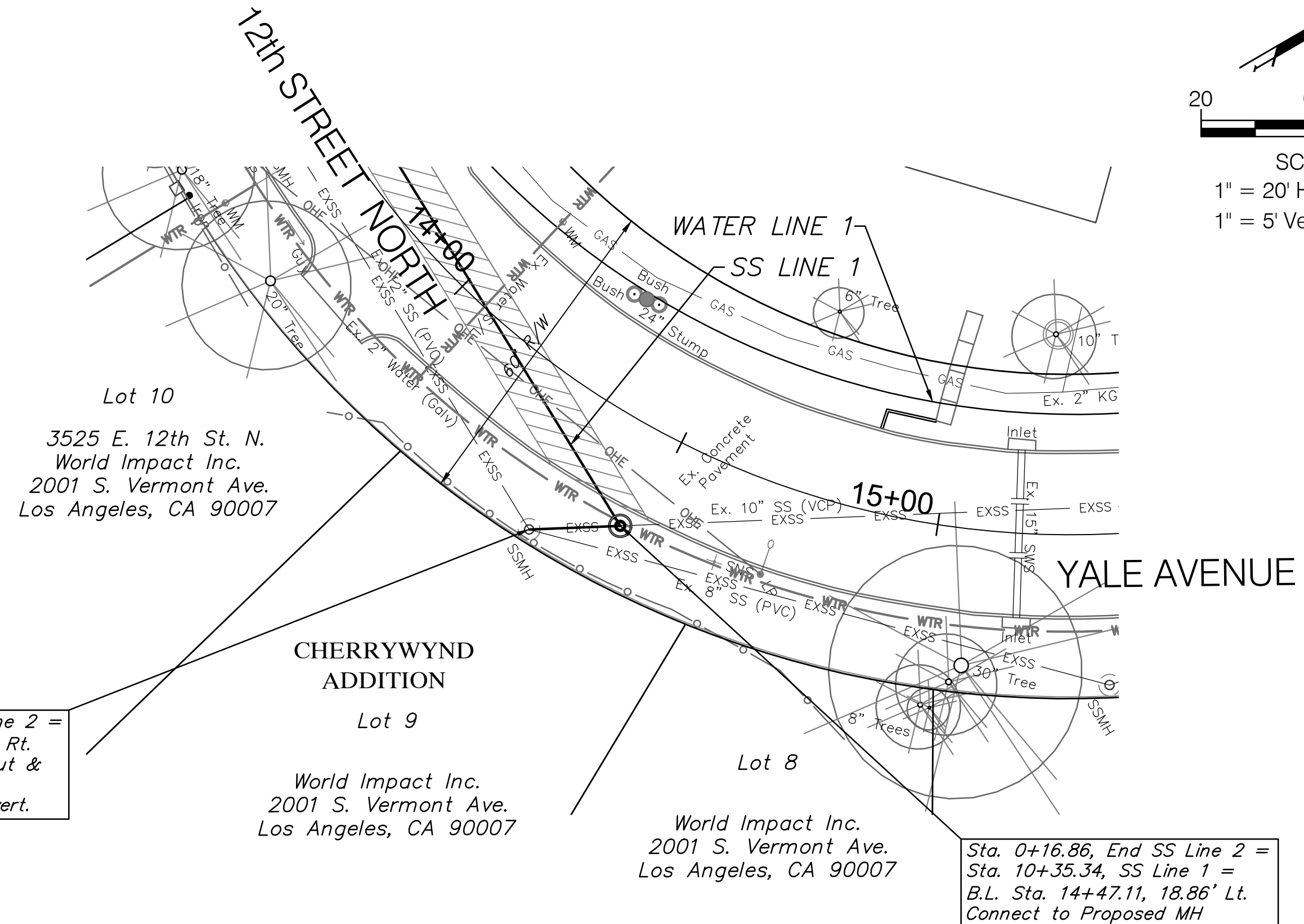
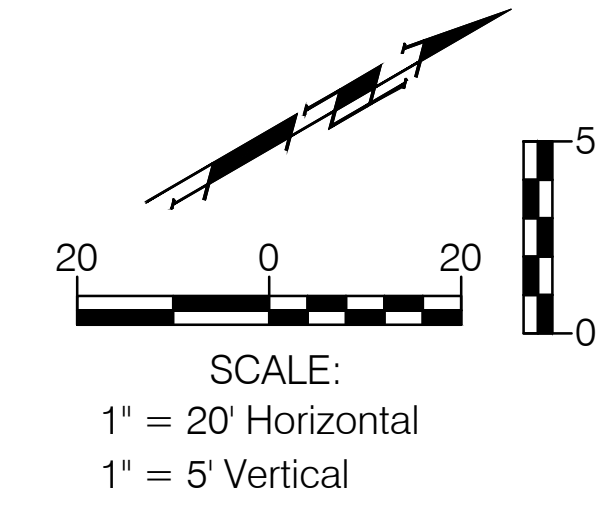


B.L. Sta. 13+59.41, 8.00' Rt.
 Remove and Replace Ex. Ring
 & Cover.
 Abandon 14.5' Ex. 8" SS (N)
 and Plug Opening in MH Wall.
 Re-Shape Ex. Bench & Invert
 Top Elev = 1363.06

SS Line 2 has been designed to be an
 overflow pipe for SS Line 1. The
 Contractor Shall Form the Invert of the
 Proposed Manhole at Sta. 10+35.34 so
 that the Flow Continues West Under
 Normal Conditions, but Flows into SS
 Line 2 when the Sewage is Backed Up.



BENCHMARK:
 BM #2 - Chiseled "X" in the South Lane of 12th Street North
 Just West of the Walk to 3501 E. 12th Street North.
 Elev. = 1358.70 (NAVD 88)

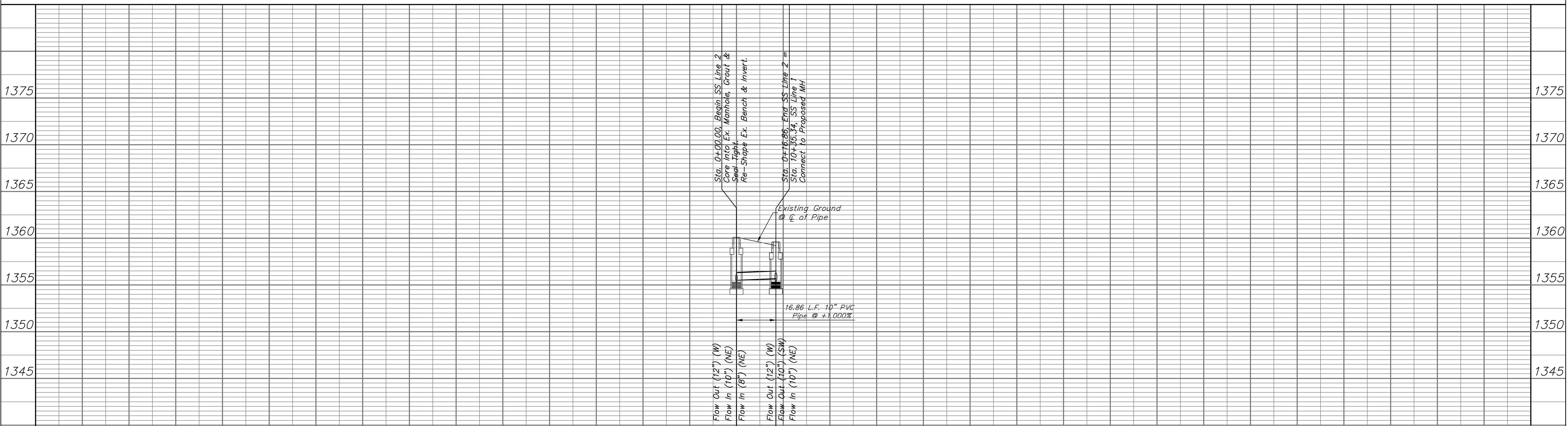


Sta. 0+00.00, Begin SS Line 2 =
 B.L. Sta. 14+34.64, 27.83' Rt.
 Core Into Ex. Manhole, Grout &
 Seal Tight.
 Re-Shape Ex. Bench & Invert.

Sta. 0+16.86, End SS Line 2 =
 Sta. 10+35.34, SS Line 1 =
 B.L. Sta. 14+47.11, 18.86' Lt.
 Connect to Proposed MH

SS Line 2 has been designed to
 be an overflow pipe for SS Line 1.
 See Note on Previous Sheet.

Note:
 Pavement, Sidewalks, Etc.
 To Be Removed Are
 Indicated By:



1355.33 = Flow Out (12") (W)
 1355.49 = Flow In (10") (NE)
 1355.36 = Flow In (8") (NE)

1355.33 = Flow Out (12") (W)
 1355.66 = Flow Out (10") (SW)
 1355.54 = Flow In (10") (NE)

Existing Ground
 @ ϕ of Pipe

16.86 L.F. 10" PVC
 Pipe @ +1.000%

Sta. 0+00.00, Begin SS Line 2 =
 Core Into Ex. Manhole, Grout &
 Seal Tight.
 Re-Shape Ex. Bench & Invert.

Sta. 0+16.86, End SS Line 2 =
 Sta. 10+35.34, SS Line 1
 Connect to Proposed MH

0+00.00 0+16.86

Drawing File: E:\Projects\Fairmount Park Water & Sewer\Fairmount Base.dwg (SS 01)
 Project No. 16-114597 CAPITAL IMPROVEMENT PROJECT
12TH STREET NORTH SANITARY SEWER
 SS Line 2 - Sta. 0+00.00 to 0+16.86
 FAIRMOUNT PARK ADDITION WATER & SANITARY SEWER IMPROVEMENTS

Baughman Company, P.A.
 315 Ellis St. Wichita, KS 67211 P 316-262-7271 F 316-262-0149
 ENGINEERING | SURVEYING | PLANNING | LANDSCAPE ARCHITECTURE

May 2017
 SHEET
 OF 5
 24