

GENERAL NOTES:

- The Contractor shall comply with all applicable safety regulations. All construction shall be completed following current City Standard Specifications and Special Provisions.
- Contractor will be required to provide notice to utility companies a minimum of seventy-two (72) hours prior to any excavation, as follows:
 Kansas One-Call 687-2470
 The Contractor must notify the following in case of an emergency:
 AT&T 1-800-246-8464
 Black Hills Energy 1-800-694-8989
 City of Wichita Water & Sewer 1-316-219-8921
 City of Wichita Stormwater 1-316-268-4090
 City of Wichita Traffic 1-316-268-4034
 Cox Communications 1-888-249-3530
 Kansas Gas Service 1-888-482-4950
 Westar Energy 1-800-544-4857
- Utility service lines, poles, etc. are to be adjusted as necessary by others prior to construction unless the plans specifically call for their adjustment by the Contractor or unless the plans specifically identify a utility to be adjusted by its owner during construction. Existing utilities and their location, as shown on the plans, represent the best information obtainable for design. The Contractor will be required to work around existing utilities within the right-of-way which do not conflict with proposed construction.
- Rubble from the removal of miscellaneous structures and excess excavation which is to be wasted shall be disposed of on sites to be provided by the Contractor. These sites shall be approved by the Engineer as to suitability, appearance and site location. Locations, in the opinion of the Engineer, that will leave an unsightly appearance will not be approved. All disposal sites must be approved by the Kansas Department of Health and Environment. Material either stockpiled or disposed of in a flood plain will require a Kansas State Board of Agriculture permit. Any material dumped in waters of the United States or wetlands is subject to U.S. Corps of Engineers permitting regulations. Any material buried or stockpiled beyond approved construction limits will require additional archaeological investigations unless buried in a previously approved borrow location.
- Trees and shrubs in public right-of-way which are in direct conflict with proposed new construction shall be removed by the Contractor with the City Engineer's approval. Trees and shrubs which are not in direct conflict with proposed new construction shall be saved and protected from damage.
- The Contractor shall give all property owners and/or tenants of developed property abutting the construction of this project a minimum of ten (10) days notice prior to start of construction.
- The Contractor shall be responsible for preserving property irons. The Contractor will be required to re-establish any property irons which are damaged or destroyed by his construction operations. Such irons shall be re-established by a licensed land surveyor in accordance with state laws
- If traffic will be impacted by construction, a traffic control plan must be submitted and approved by the City Traffic Engineer, Brian Coon at traffic@wichita.gov before construction can begin. The Contractor shall be responsible for all traffic control measures to facilitate construction. All construction zone markings and signage shall conform to the latest version of Manual on Uniform Traffic Control Devices (MUTCD) as published by the US Dept. of Transportation, Federal Highway Administration. All costs associated with construction markings and signage shall be the Contractors responsibility.
- All elevations shown are NAVD 88.
- All stubs and capped pipes shall be located with green plastic tape in the same manner as risers.

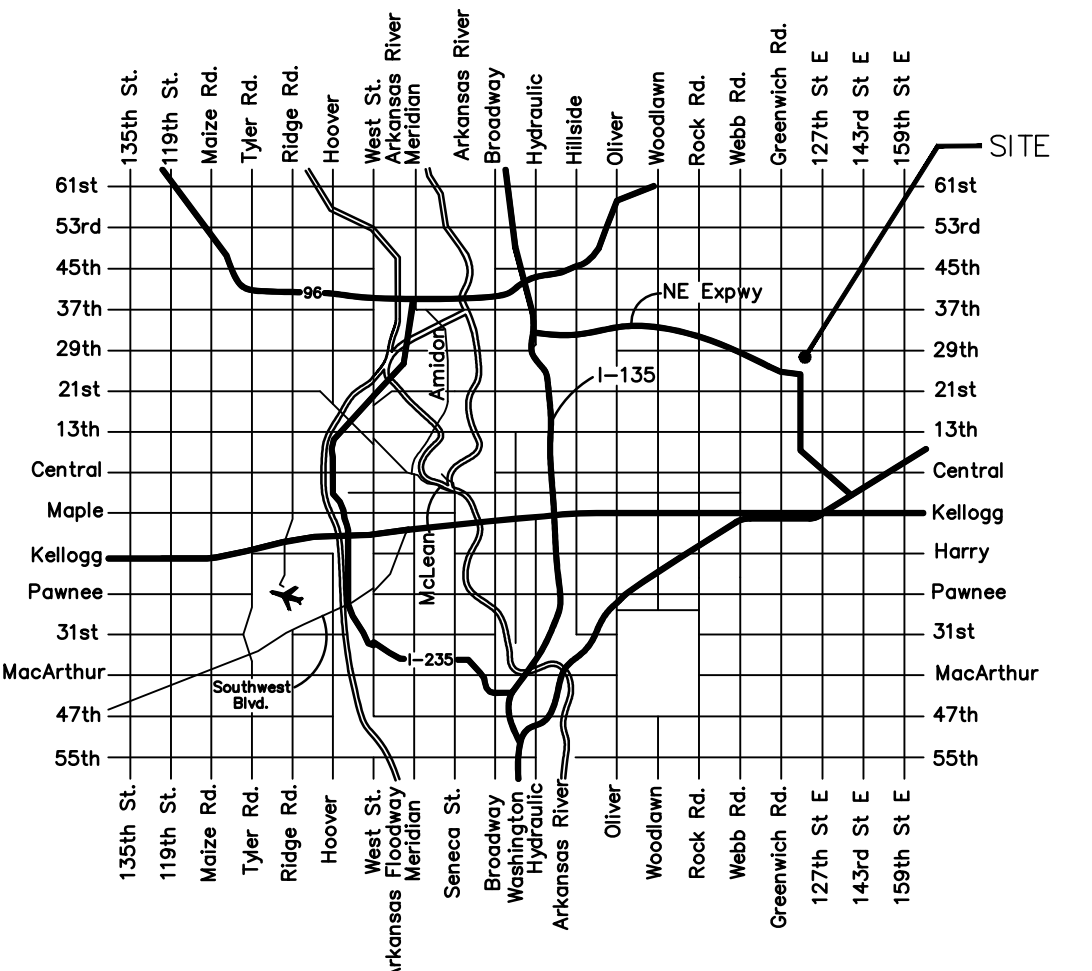
- Connecting to Existing Manholes:
 Prior to laying sewer lines using existing stubs in existing manholes, the Contractor shall expose and verify the elevation, grade and alignment of existing stubs and notify the Engineer of any deviation from the plans. Where the stub is unusable due to elevation grade or alignment, the Contractor shall remove the stub and plug the hole, and reshape the existing manhole invert to provide smooth flow. Where connection to an existing manhole that does not have an existing stub, the Contractor shall core cut into existing manhole wall to make connection using approved water stop gasket, and reshape the existing manhole invert to provide smooth flow. The cost of connect to existing manholes is incidental to the project.
- Contractor shall limit the extent of trench open overnight and weekends to less than 50 feet.
- Contractor shall provide positive drainage away from all manhole covers.
- The Contractor shall prevent any construction debris from entering the existing sanitary sewer during construction.
- The Contractor shall protect from damage and support existing utilities through construction as approved by the utility owner and the Engineer at the contractor's expense.
- All disturbed areas within street R/W and lots are to be seeded as follows:
 Seed -- Rye grass; 5 lbs./1000 Sq. Ft.
 All costs associated with seeding including mobilization, preparation of ground, seeding, fertilizing, mulching, etc. shall be included in the L.S. bid item "Seeding".
- All existing and proposed erosion control measures including silt fencing, erosion control mat, straw bales, inlet barriers, and const. entrance shall be maintained throughout construction by the contractor and until project is accepted by the City of Wichita. The on-site engineer shall complete weekly reports on the status of erosion control measures. The contractor shall be required to comply with maintenance and/or replacement of erosion control measures as determined by the on-site engineer until project is accepted by City of Wichita. Maintenance and/or replacement of erosion control measures to be paid by L.S. bid item "Maintain Existing BMPs".
- The developer for this project is Ritchie Development, Kevin Mullen, (316)684-7300.

Lateral 3, Main 25, Four Mile Creek SANITARY SEWER IMPROVEMENTS to serve **FIREFLY WAY ADD. PH. 2**

CITY OF WICHITA, KANSAS

Gary Janzen, P.E. City Engineer
 Project Number
 468-85180
 O.C.A. Number
 744489

McCullough Excavation - Contractor
 K. Yale - City of Wichita, Field Project Engineer
 F. Smith - Baughman, Inspector
 As-built
 Stubs & Risers
 Release Date (for connection purposes only): 10/2/2019
 Completion Date:
 pdf: 10/23/2019 apr

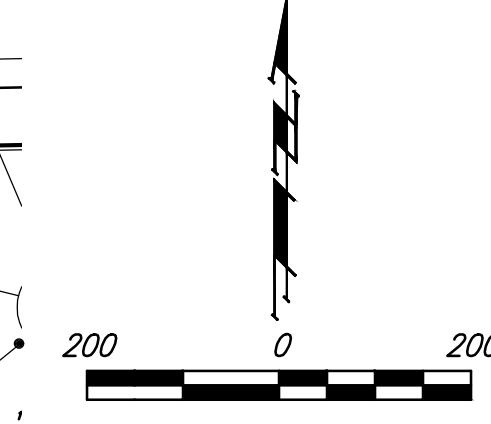
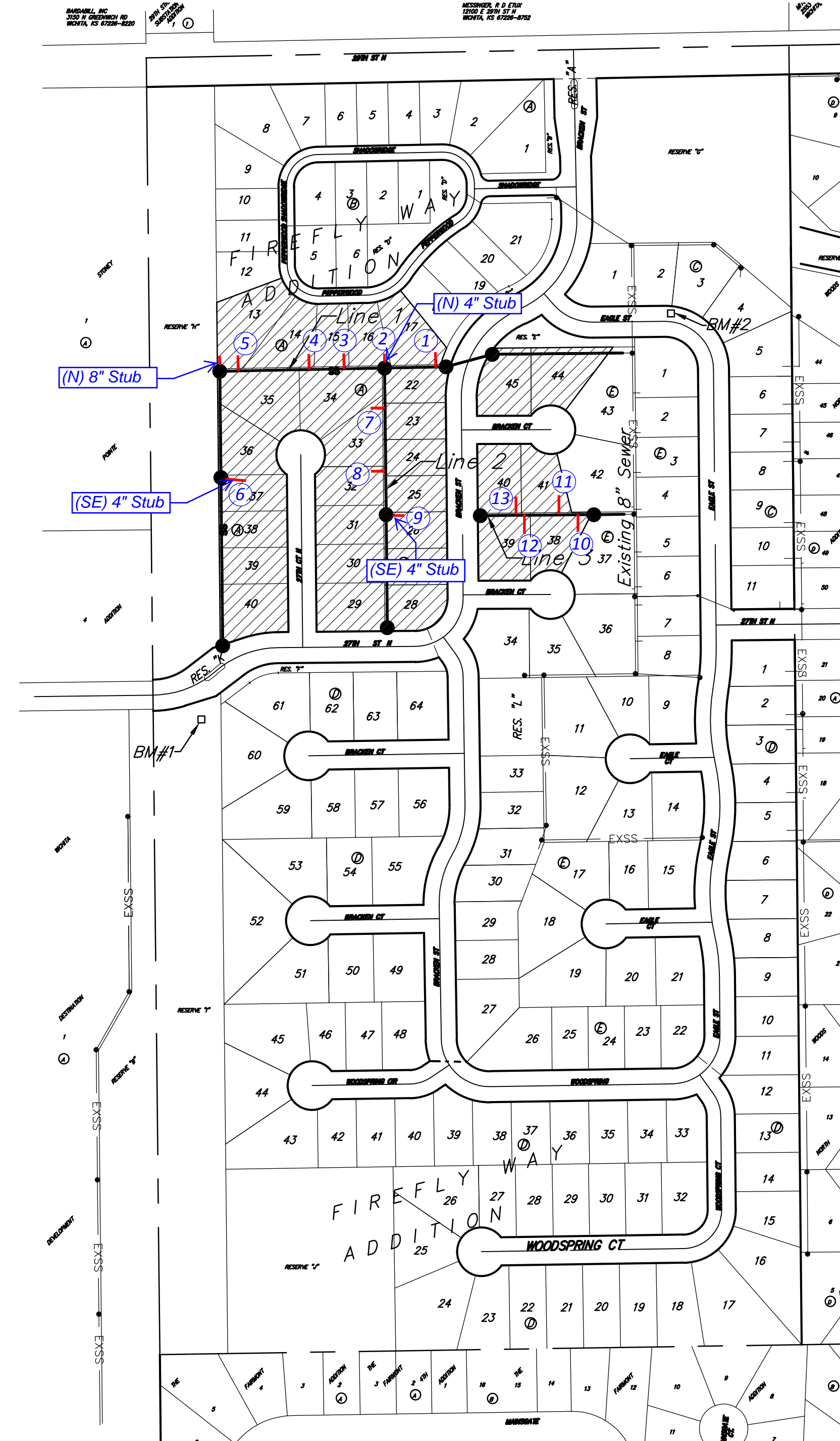


Vicinity Map

Benchmarks

BM#1: RR spike in high line pole, 40' west and 30' south of Lot 60, Block D, Firefly Way Addition.
 Elev. = 1399.54 NAVD88

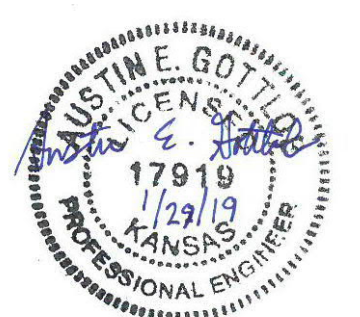
BM#2: Benchmark disc in top of curb, adjacent to fire hydrant 15' south of SE corner of Lot 2, Block C, Firefly Way Addition.
 Elev. = 1396.95 NAVD88



Sheet Index

Title Sheet	1
Line 1	2-3
Line 2	4
Line 3	5
Erosion Control Plan	6
Precast SS Manhole Detail	7
Manhole Frame & Cover Detail	8
Vertical Riser Detail	9
Erosion Control BMP Details	10-14
Coordinate Sheet	15
Copy of Plat	16

Benefit District



January 2019

Baughman Company, P.A. 315 Ellis St. Wichita, KS 67211 P 316-262-7271 F 316-262-0143
 ENGINEERING | SURVEYING | PLANNING | LANDSCAPE ARCHITECTURE

G:\Projects\Firefly Way-Ritchie_16-04-P195\Engineering\Phase 2\SS 18-11-E113\SS.dwg

BENCHMARKS:
BM#1: RR spike in high line pole, 40' west and 30' south of Lot 60, Block D, Firefly Way Addition.
 Elev. = 1399.54 NAVD88

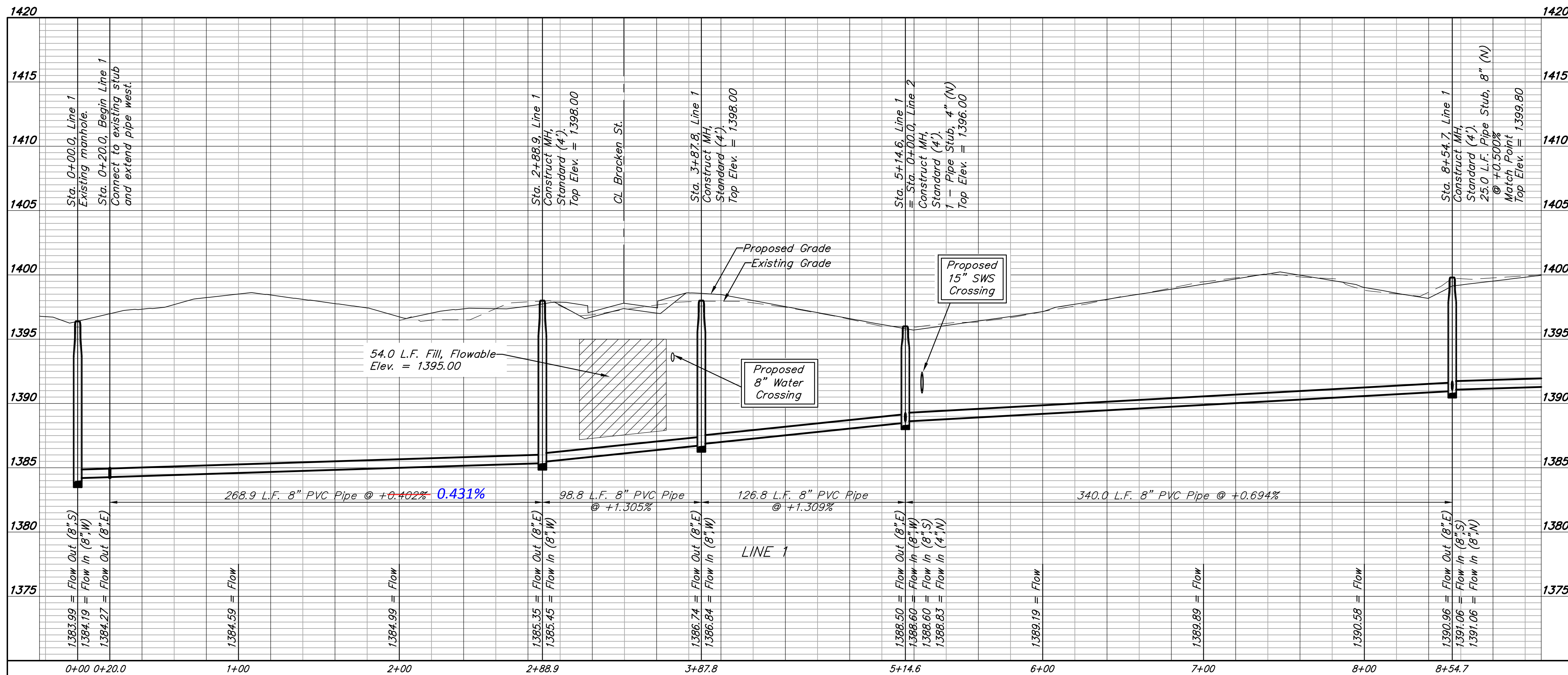
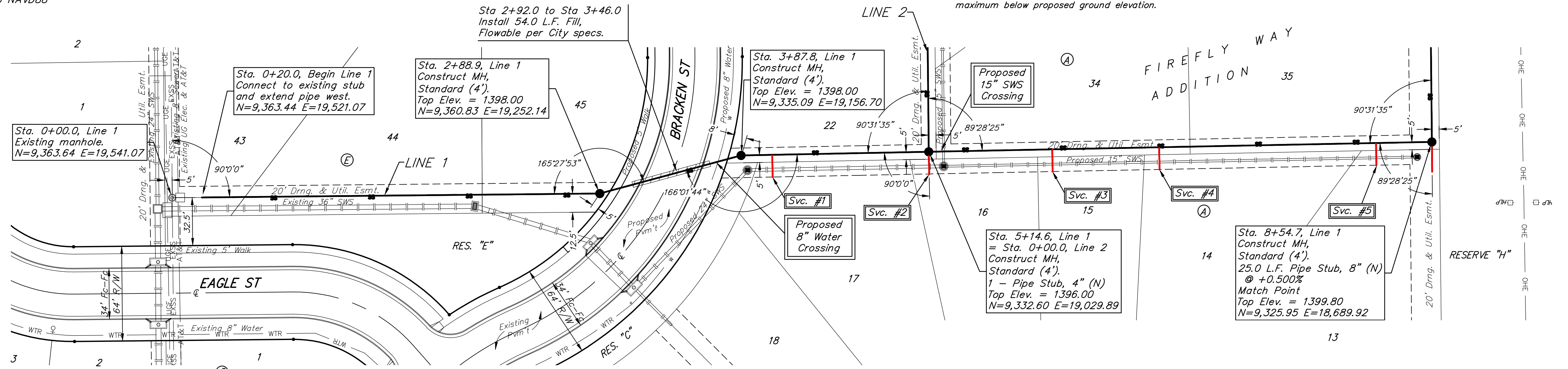
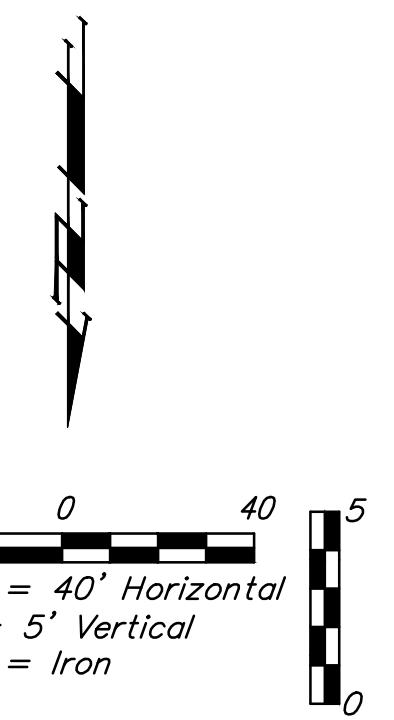
BM#2: Benchmark disc in top of curb, adjacent to fire hydrant 15' south of SE corner of Lot 2, Block C, Firefly Way Addition.
 Elev. = 1396.95 NAVD88

SEWER SERVICE TABLE

Distance from Main to Riser (Lt./Rt.)	Distance from		NUMBER	TYPE	LOCATION			FOR INFORMATION ONLY		
	Upstream MH	Downstream MH			LOT NO.	BLOCK NO.	LINE NO.	STATION \ DIRECTION	APPROXIMATE LENGTH 4" PIPE	VERTICAL
15' Rt.	106'	21'	1	8" X 4" Tee W/Riser	17	A	1	4+08.9/Rt.	7.0'	15'
15' Rt.	stub @ mh		2	4" Stub	16	A	1	5+14.6/Rt.	3.5'	15'
15' Rt.	255'	85'	3	8" X 4" Tee W/Riser	15	A	1	5+08.1/Rt.	4.0'	15'
15' Rt.	183'	157'	4	8" X 4" Tee W/Riser	14	A	1	6+70.4/Rt.	5.0'	15'
15' Rt.	37'	303'	5	8" X 4" Tee W/Riser	13	A	1	8+17.0/Rt.	4.5'	15'

NOTE: Vertical Riser Pipe shall be extended to 2' minimum above ground water elevation and 4' maximum below proposed ground elevation.

6+00/ Rt.
 6+72/ Rt.
 8+18/ Rt.



Contractor shall verify elevation and alignment of existing 8" pipe prior to construction and notify Engineer of any discrepancy.



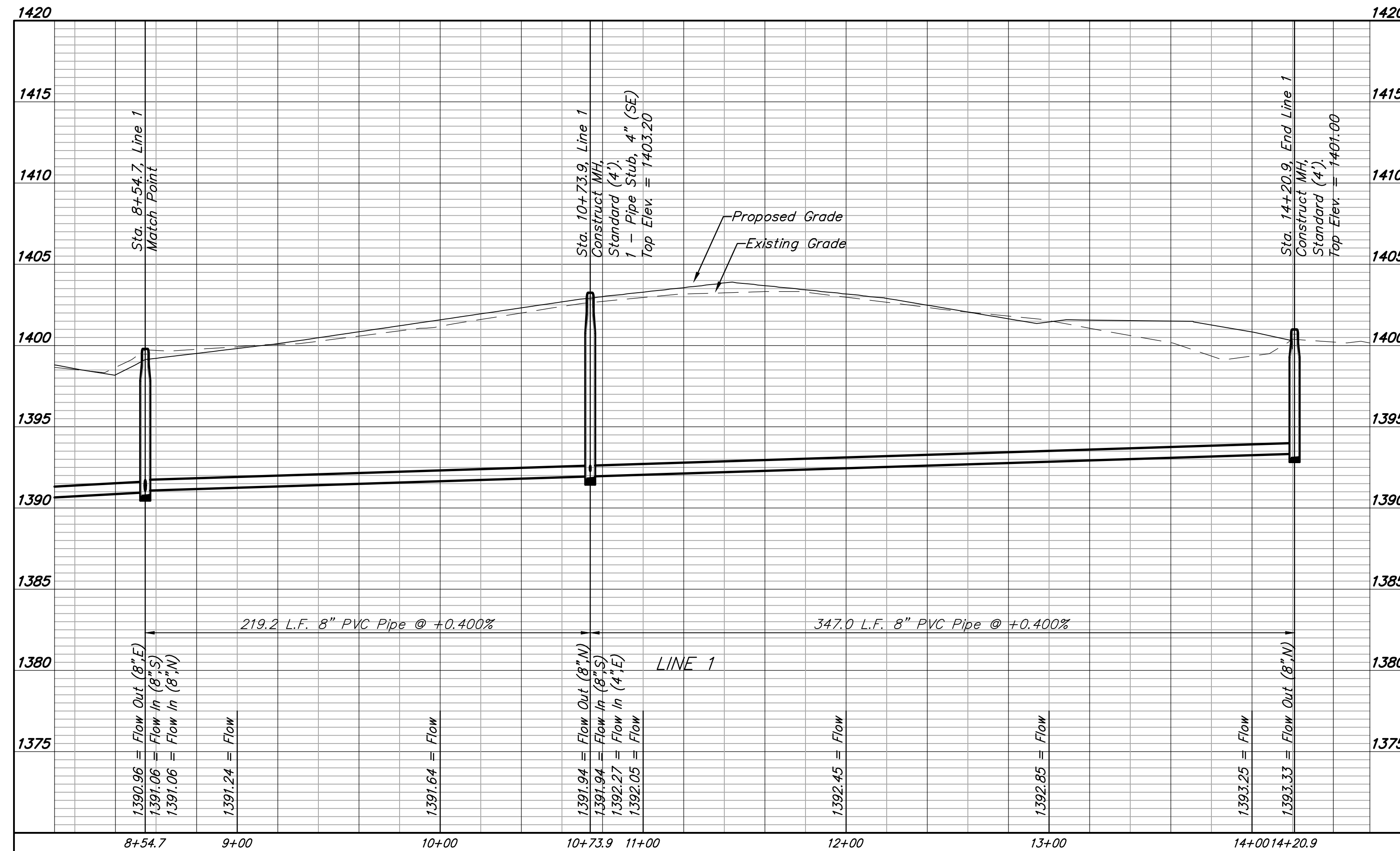
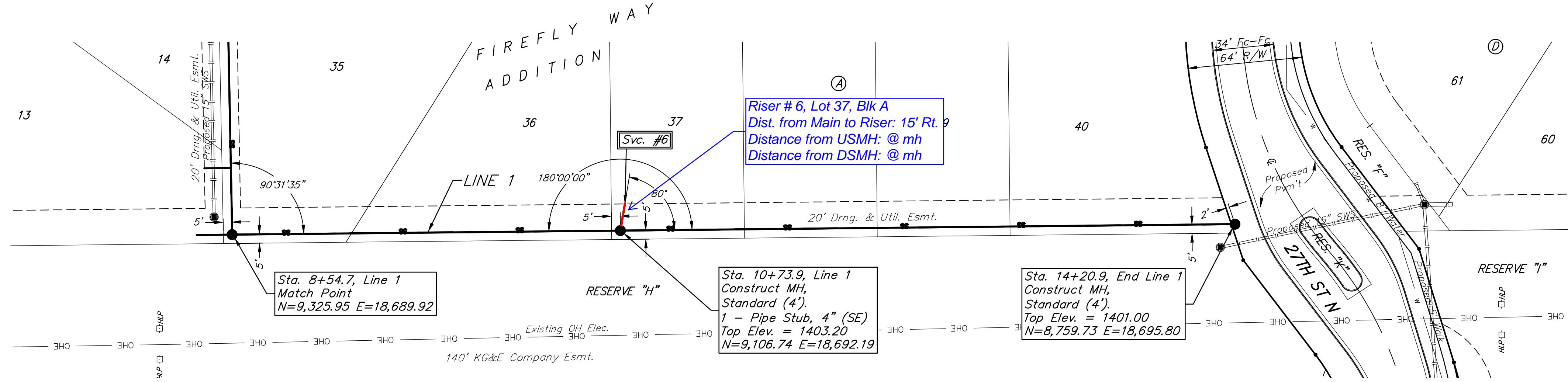
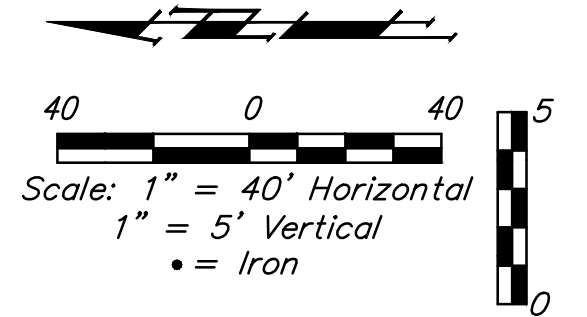
BENCHMARKS:
BM#1: RR spike in high line pole, 40' west and 30' south of Lot 60, Block D, Firefly Way Addition.
 Elev. = 1399.54 NAVD88

BM#2: Benchmark disc in top of curb, adjacent to fire hydrant 15' south of SE corner of Lot 2, Block C, Firefly Way Addition.
 Elev. = 1396.95 NAVD88

SEWER SERVICE TABLE

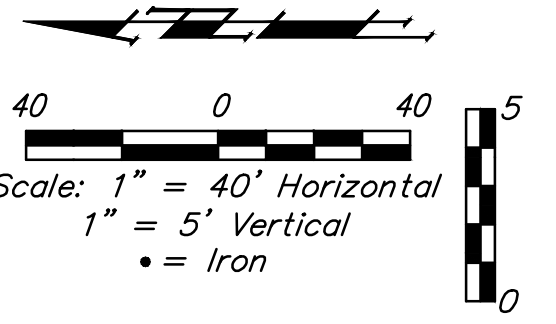
NUMBER	TYPE	LOCATION				FOR INFORMATION ONLY	
		LOT NO.	BLOCK NO.	LINE NO.	STATION \ DIRECTION	APPROXIMATE LENGTH 4" PIPE	
6	4" Stub	37	A	1	10+73.9/Lt.	7.0'	15.2'

NOTE: Vertical Riser Pipe shall be extended to 2' minimum above ground water elevation and 4' maximum below proposed ground elevation.



BENCHMARKS:
BM#1: RR spike in high line pole, 40' west and 30' south of Lot 60, Block D, Firefly Way Addition.
 Elev. = 1399.54 NAVD88

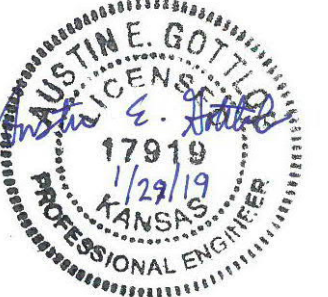
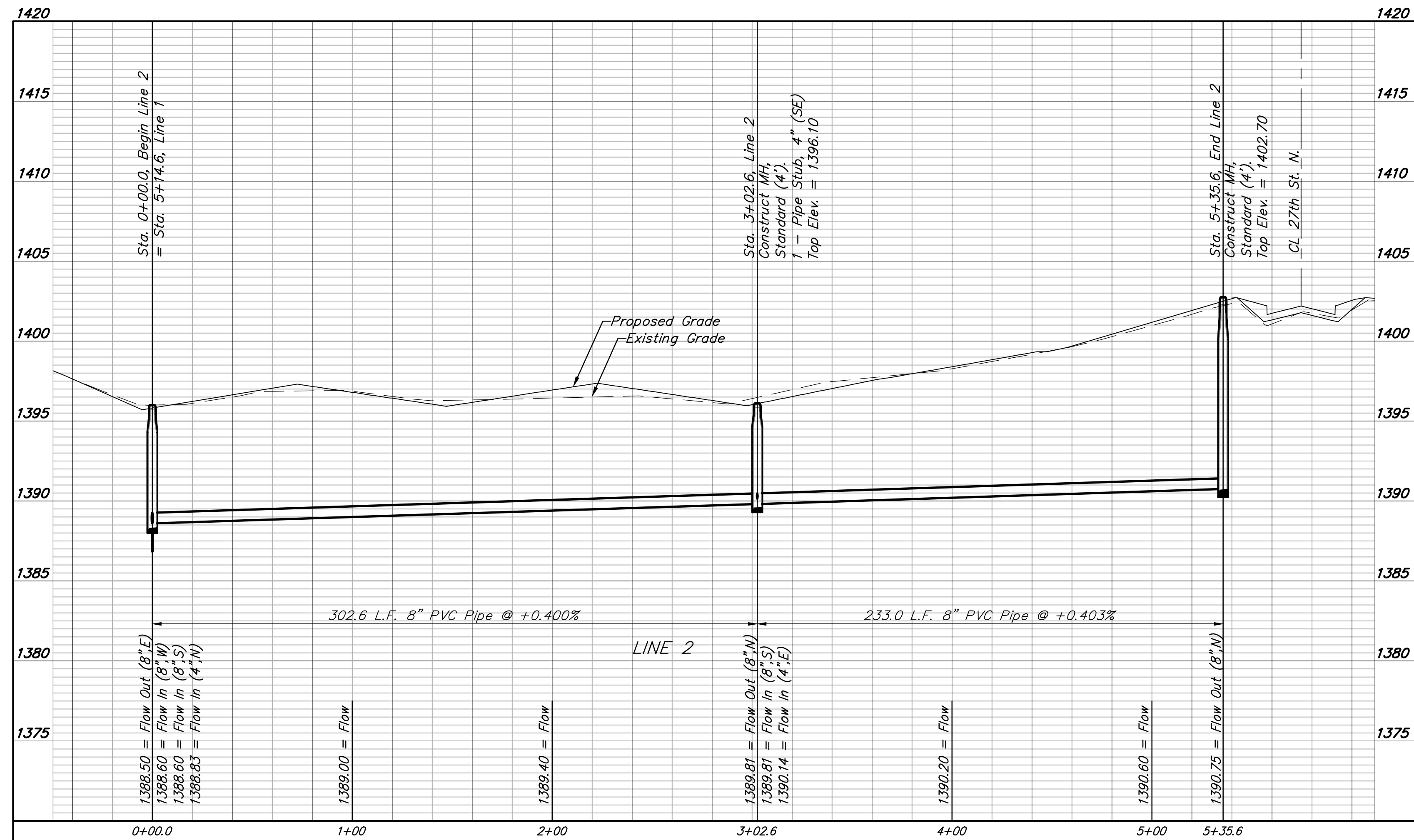
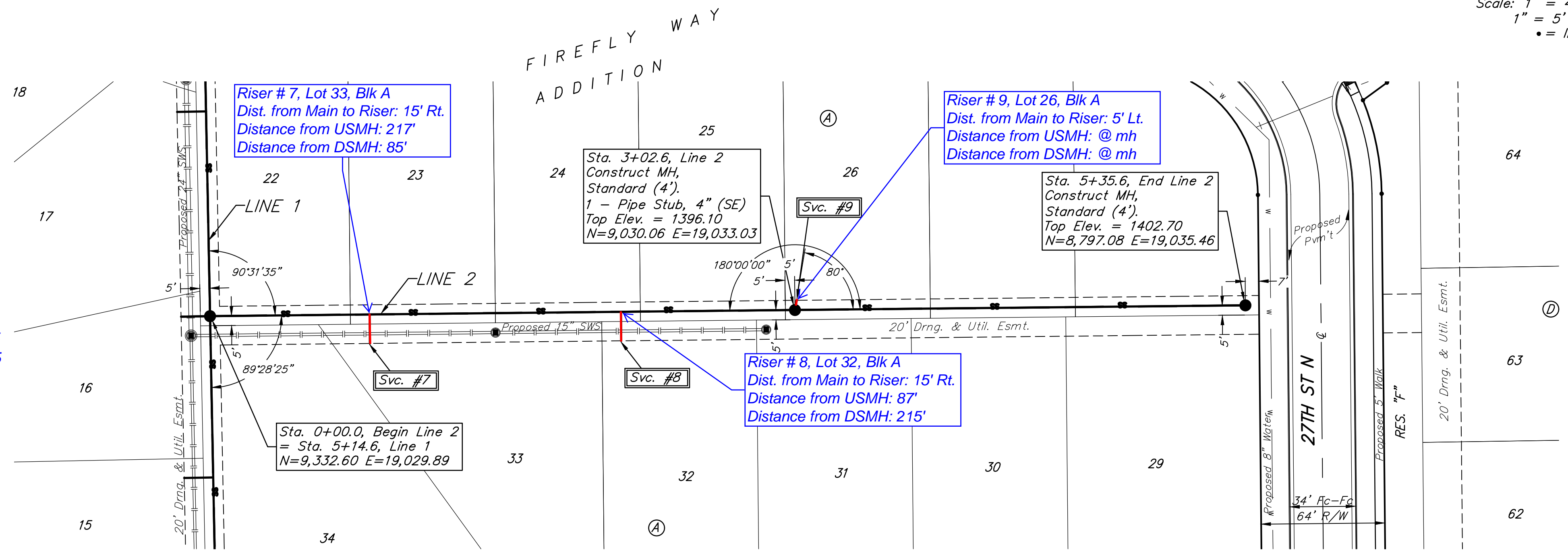
BM#2: Benchmark disc in top of curb, adjacent to fire hydrant 15' south of SE corner of Lot 2, Block C, Firefly Way Addition.
 Elev. = 1396.95 NAVD88



SEWER SERVICE TABLE

NUMBER	TYPE	LOCATION			FOR INFORMATION ONLY			
		LOT NO.	BLOCK NO.	LINE NO.	STATION \ DIRECTION	APPROXIMATE LENGTH 4" PIPE		VERTICAL
7	8" X 4" Tee W/Riser	33	A	2	0+02.6/Rt.	4.5'	15.0'	0+85
8	8" X 4" Tee W/Riser	32	A	2	2+12.6/Rt.	3.5'	15.0'	2+15
9	4" Stub	26	A	2	3+02.6/Lt.	2.5'	5.0'	

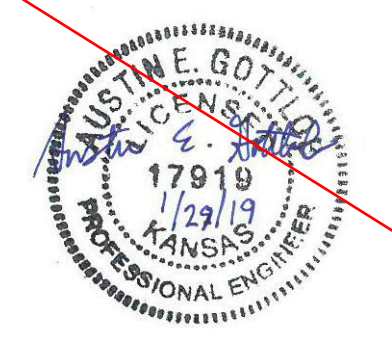
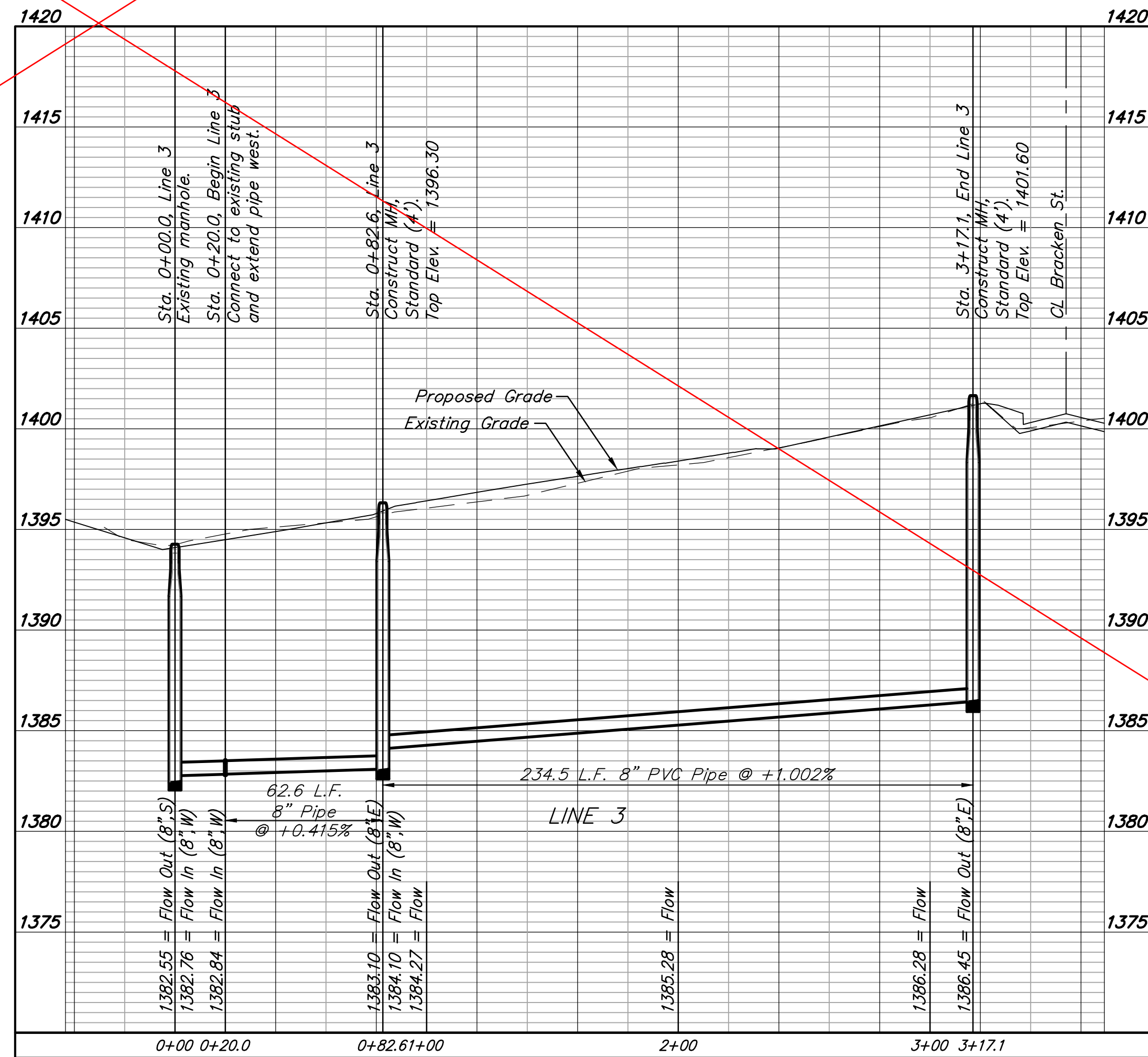
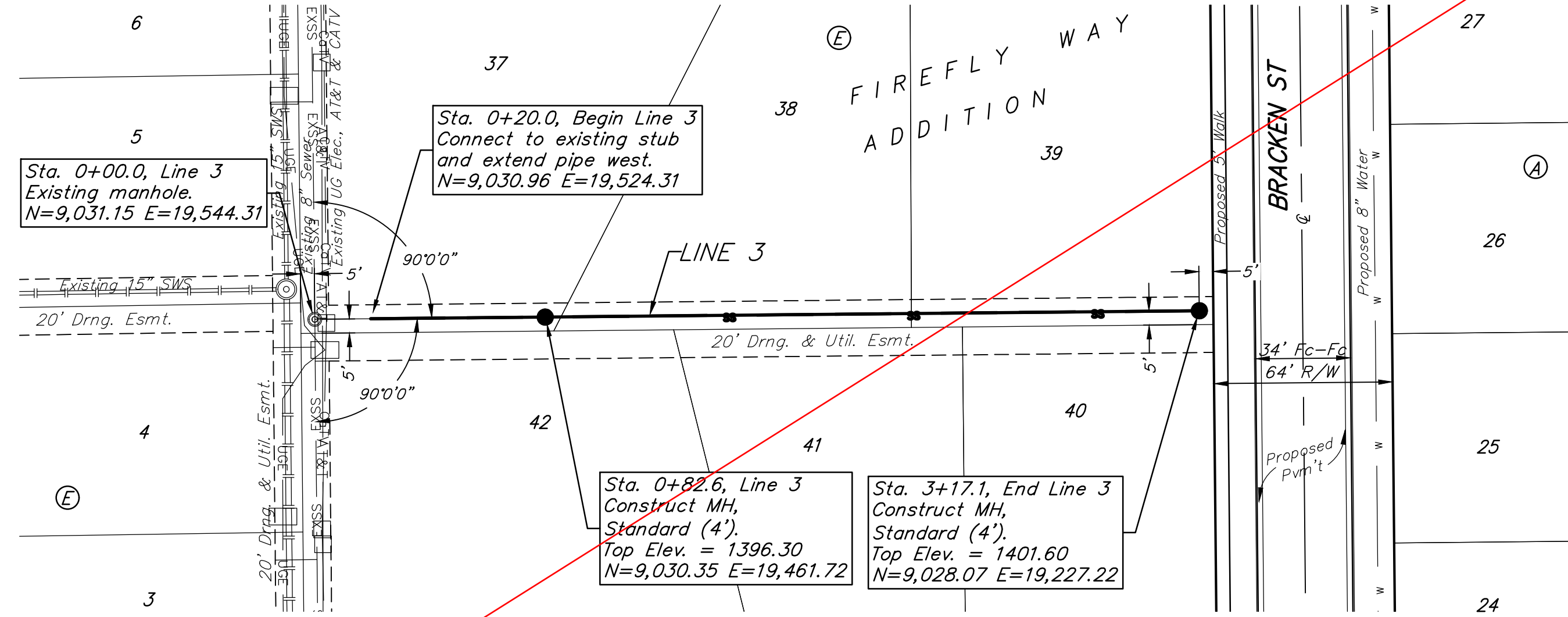
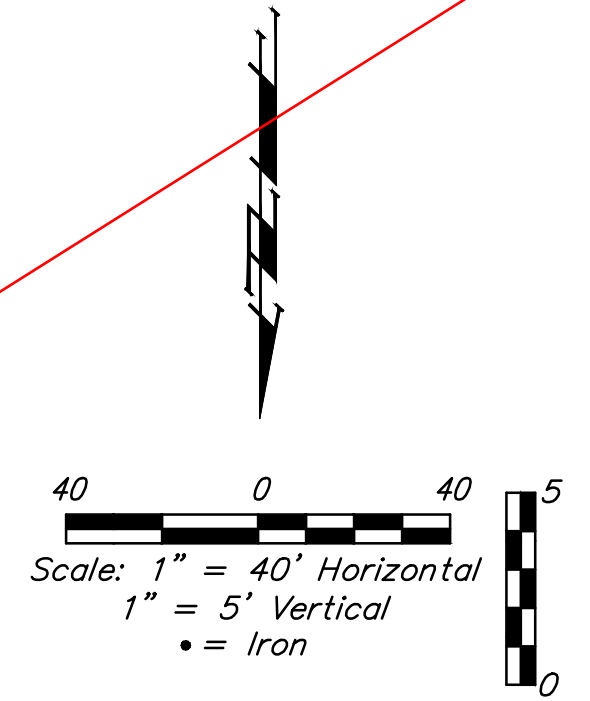
NOTE: Vertical Riser Pipe shall be extended to 2' minimum above ground water elevation and 4' maximum below proposed ground elevation.



BENCHMARKS:
BM#1: RR spike in high line pole, 40' west and 30' south of Lot 60, Block D, Firefly Way Addition.
 Elev. = 1399.54 NAVD88

BM#2: Benchmark disc in top of curb, adjacent to fire hydrant 15' south of SE corner of Lot 2, Block C, Firefly Way Addition.
 Elev. = 1396.95 NAVD88

SEE REVISED SHEET



BENCHMARKS:
BM#1: RR spike in high line pole, 40' west and 30' south of Lot 60, Block D, Firefly Way Addition.
 Elev. = 1399.54 NAVD88

BM#2: Benchmark disc in top of curb, adjacent to fire hydrant 15' south of SE corner of Lot 2, Block C, Firefly Way Addition.
 Elev. = 1396.95 NAVD88

SEWER SERVICE TABLE							
NUMBER	TYPE	LOCATION			STATION \ DIRECTION	FOR INFORMATION ONLY	
		LOT NO.	BLOCK NO.	LINE NO.		APPROXIMATE LENGTH 4" PIPE	VERTICAL
10	8" X 4" Tee W/Riser	38	E	3	-1+24.0/Lt.	8.5'	5.0'
11	8" X 4" Tee W/Riser	41	E	3	-1+41.0/Rt.	8.5'	15.0'
12	8" X 4" Tee W/Riser	39	E	3	-2+24.0/Lt.	9.5'	5.0'
13	8" X 4" Tee W/Riser	40	E	3	-2+42.0/Rt.	9.5'	15.0'

NOTE: Vertical Riser Pipe shall be extended to 2' minimum above ground water elevation and 4' maximum below proposed ground elevation.

