

GENERAL NOTES:

1. Contractor will be required to provide notice to utility companies a minimum of seventy-two (72) hours prior to any excavation, as follows:

Kansas One-Call 687-2470

The Contractor must notify the following in case of an emergency:

- Cox Communications 262-4270
- Kansas Gas Service 1-888-482-4950
- Westar Energy 383-8650
- Aquila Energy 1-800-303-0357
- AT&T 268-2245
- City of Wichita Water Dept. 268-4563
- City of Wichita Sewer Maint. 268-4024
- City of Wichita Storm Sewer Maint. 268-4090
- City of Wichita Traffic Maint. 268-4034
- Conoco Phillips Pipeline Co. 1-877-267-2290
- Southern Star Pipeline Co. 529-6600
- Kinder-Morgan Pipeline Co. 1-888-844-5658

2. Utility service lines, poles, valve boxes, meters, and etcetera are to be adjusted as necessary by others prior to construction unless the plans specifically call for their adjustment by the Contractor or unless the plans specifically identify a utility to be adjusted by its owner during construction. Existing utilities and their location, as shown on the plans, represent the best information obtainable for design. The Contractor will be required to work around existing utilities within the right-of-way which do not conflict with proposed construction.

3. Rubble from the removal of miscellaneous structures and excess excavation which is to be wasted shall be disposed of on sites to be provided by the Contractor. These sites shall be approved by the Engineer as to suitability, appearance and site location. Locations, in the opinion of the Engineer, that will leave an unsightly appearance will not be approved. All disposal sites must be approved by the Kansas Department of Health and Environment. Material either stockpiled or disposed of in a flood plain would require a Kansas State Board of Agriculture permit. Any material dumped in waters of the United States or wetlands is subject to U.S. Corps of Engineers permitting regulations. Any material buried or stockpiled beyond approved construction limits would require additional archaeological investigations unless buried in a previously approved borrow location.

4. Trees and shrubs in public right-of-way which are in direct conflict with proposed new construction shall be removed by the Contractor with the Engineer's approval. Trees and shrubs which are not in direct conflict with proposed new construction shall be saved and protected from damage.

5. The Contractor shall give all property owners and/or tenants of developed property abutting the construction of this project a minimum of ten (10) days notice prior to start of construction.

6. The Contractor shall be responsible for preserving property irons. The Contractor will be required to re-establish any property irons which are damaged or destroyed by his construction operations. Such irons shall be re-established by a licensed land surveyor in accordance with state laws.

7. All existing and proposed erosion control measures including silt fencing, erosion control mat, straw bales, inlet barriers, and const. entrance shall be maintained throughout construction by the contractor and until project is accepted by the City of Wichita. The on-site engineer shall complete weekly reports on the status of erosion control measures. The contractor shall be required to comply with maintenance and/or replacement of erosion control measures as determined by the on-site engineer until project is accepted by City of Wichita. Maintenance and/or replacement of erosion control measures to be paid by L.S. bid item "Maintain Existing BMP's."

8. All excess excavation shall remain on-site and shall be stockpiled or spread at a location determined by the engineer.

9. The Contractor shall be responsible for maintaining continuous flow of sewage through construction. Contractor's proposed method for maintaining sewage flow shall be approved by the Engineer. Cost of maintaining flow of sewage through construction will not be paid for directly and this cost shall be considered as subsidiary to the other pay items of work.

10. All areas disturbed during construction shall be seeded as follows (Temporary Seeding):

Seed: Rye grass (PLS)--5 lbs./1000 Sq. Ft.

All costs associated with seeding shall be included in bid item "Seeding". All seeding operations shall conform to City of Wichita Standard Specifications.

11. Trees and shrubs in the work area which are in direct conflict with proposed new construction shall be removed by the Contractor ONLY with the Developer or Baughman Company approval. Trees and shrubs which are not in direct conflict with proposed new construction shall be saved and protected from damage. If trimming is necessary, a chainsaw shall be used. Breaking limbs with equipment will not be allowed. An on-site pre-construction meeting will occur prior to any construction to discuss tree removal, tree protection, and tree trimming.

12. The Developer for this project is Jay Russell
P.O. Box 75337
Wichita, KS 67272
(316) 722-2417
jrusell1105@cloud.com

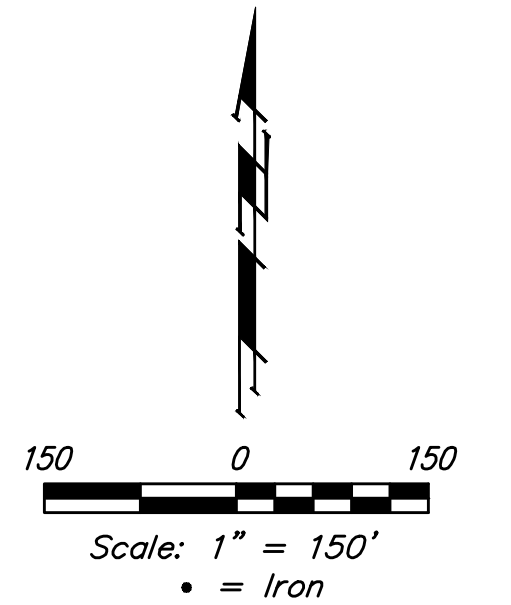
Construction Phasing - The sanitary sewer construction should be constructed in the following sequence to allow for continued construction by others:

- 1) Line 1, 1A, 1B
- 2) Line 2, 2A, 2B
- 3) Lines 3, 3A, 4, 4A, 4B

Lateral 561, SWI SANITARY SEWER IMPROVEMENTS to serve SIENA LAKES 2ND ADDITION PHASE I & PHASE II CITY OF WICHITA, KANSAS

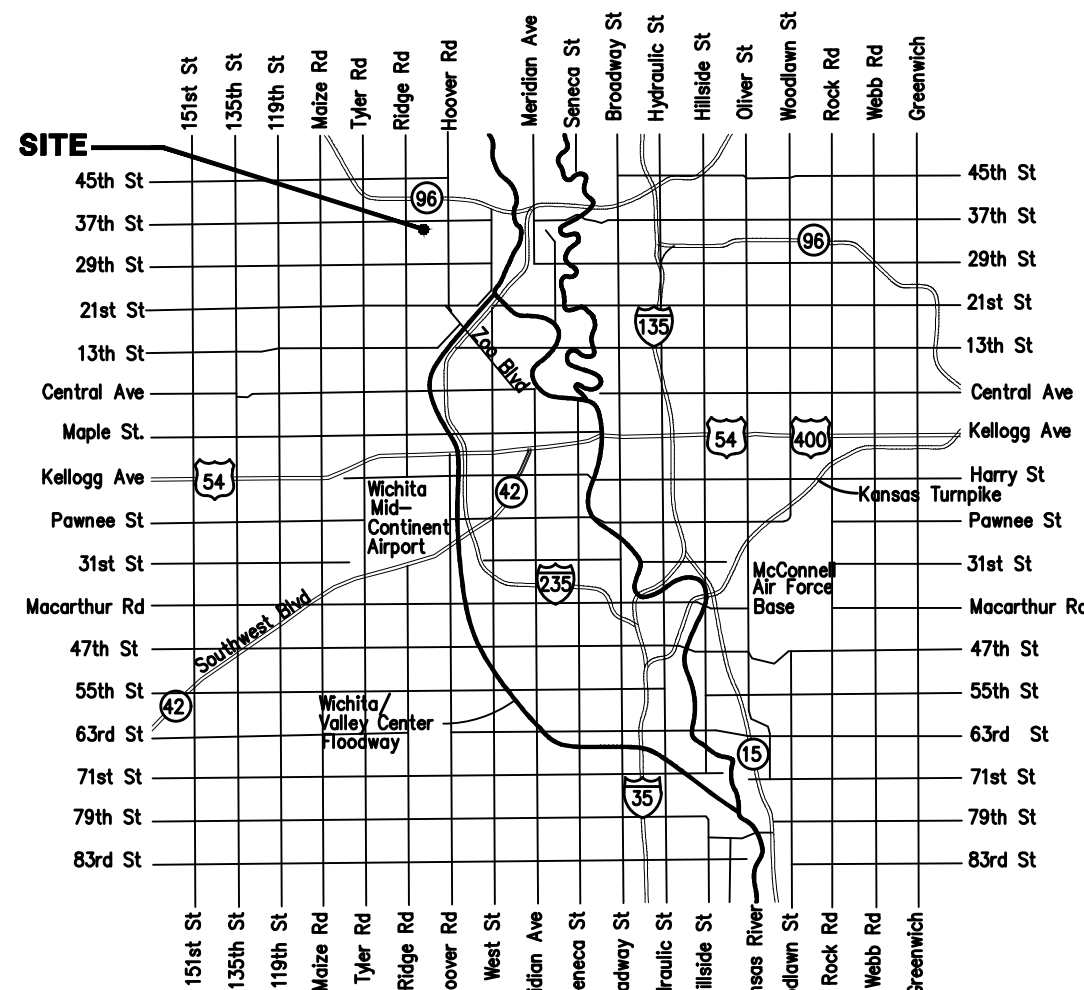
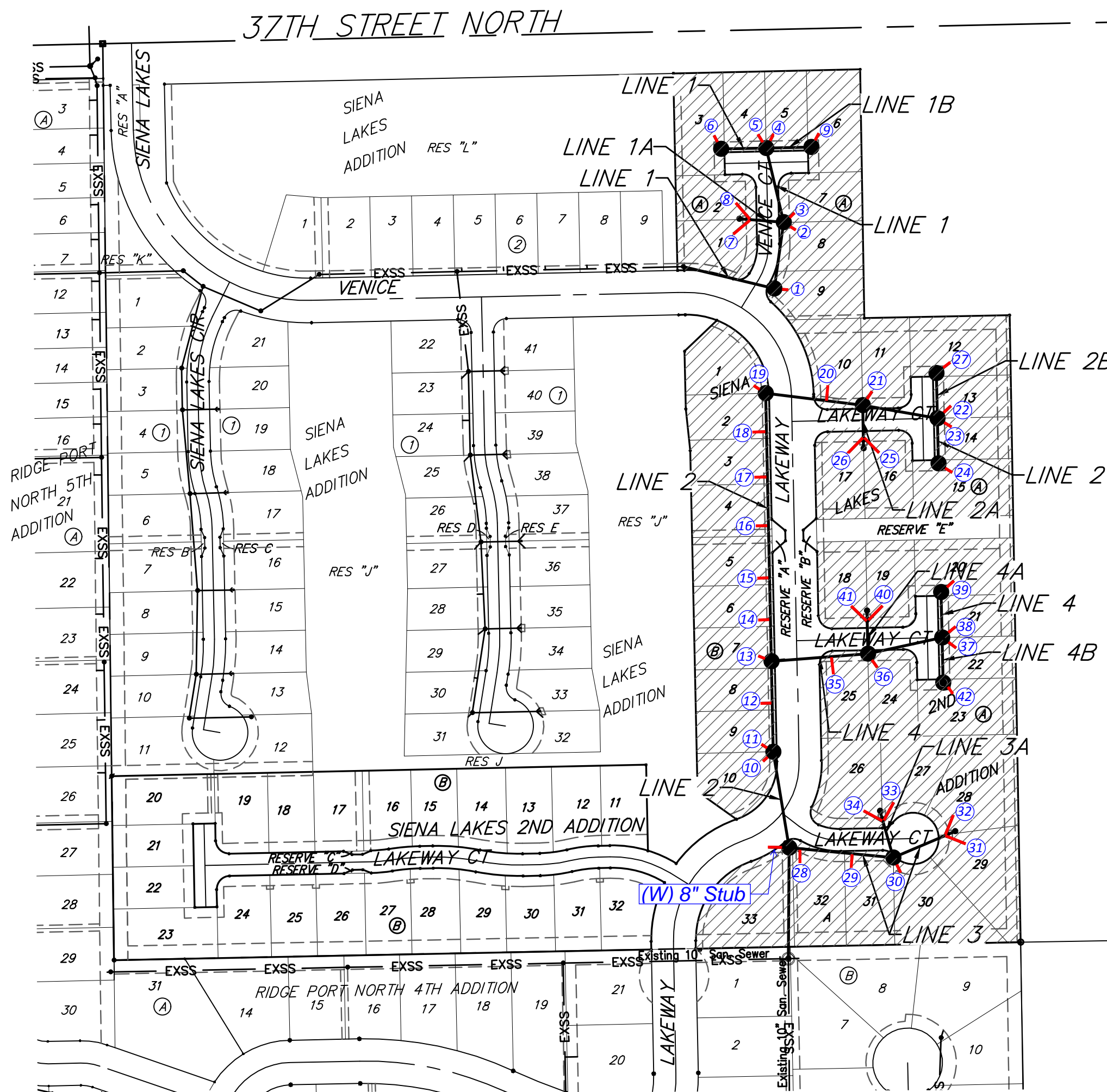
Gary Janzen, P.E. City Engineer
Project Number 468-85270
OCA Number 744473

Dutton Construction - Contractor
B. Woods - City of Wichita, Field Project Engineer
D. VanSickle - Baughman, Inspector
As-built
Stubs & Risers
Release Date: 5/14/2019
Completion Date:
pdf: 5/22/2019 apr



SHEET INDEX

Title Sheet	1
Line 1, Line 1A, & Line 1B	2
Line 2	3
Line 2, Line 2A, & Line 2B	4
Line 3 & Line 3A	5
Line 4, Line 4A, & Line 4B	6
Erosion Control Plan	7
Erosion Control BMP Details	8-12
Standard Manhole Detail	13
Ring & Cover Detail	14
Vertical Riser Detail	15
Cleanout Detail	16
Coordinate Sheet	17
Copy of Plat	18



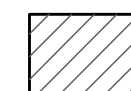
Vicinity Map

BENCHMARKS

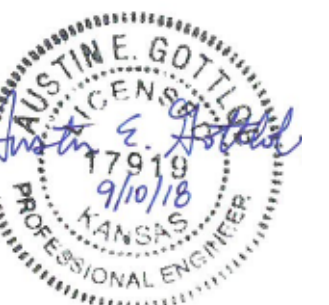
Chiseled square at the end of the top of curb at the southeast corner of Ridge Port and 37th St N.
Elev. = 1333.05 NAVD88

Chiseled square on the south side of curb inlet on the east side of Lakeway St
Elev. = 1329.58 NAVD88

BENEFIT DISTRICT

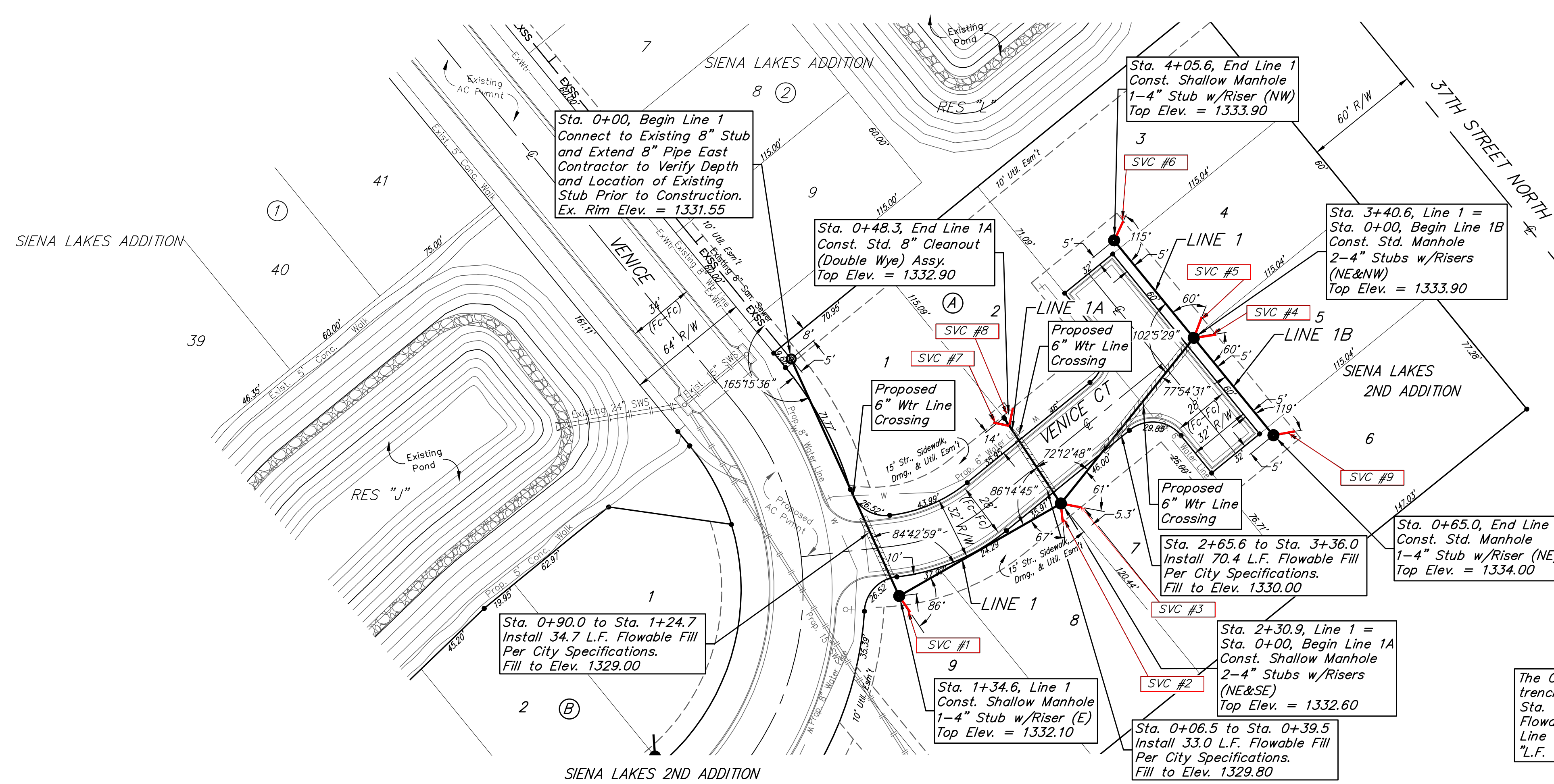


Baughman Company, P.A. 315 Ellis St. Wichita, KS 67211 P 316-262-7271 F 316-262-0149
ENGINEERING | SURVEYING | PLANNING | LANDSCAPE ARCHITECTURE

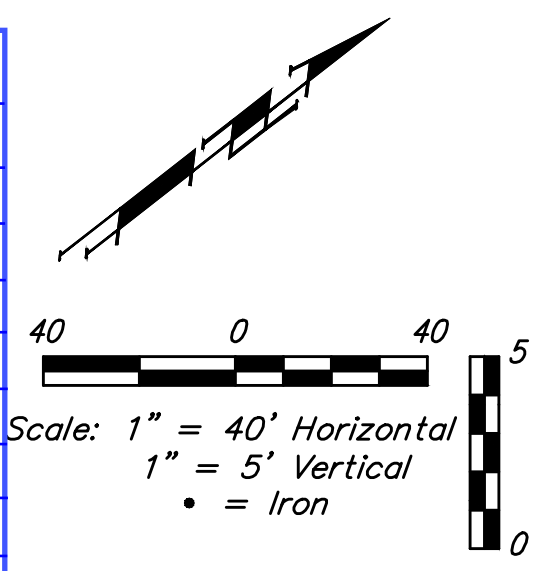


BENCHMARKS:
 Chiseled square at the end of the top of curb at the southeast corner of Ridge Port and 37th St N.
 Elev. = 1333.05 NAVD88

Chiseled square on the south side of curb inlet on the east side of Lakeway ST.
 Elev. = 1329.58 NAVD88



NUMBER	TYPE	LOT NO.	DISTANCE FROM MAIN TO RISER (LT./RT.)	DISTANCE FROM	
				USMH	DSMH
1	4" Stub	9	10' Rt.	@ mh	@ mh
2	4" Stub	8	10' Rt.	@ mh	@ mh
3	4" Stub	7	10' Rt.	@ mh	@ mh
4	4" Stub	5	11.5' Rt.	@ mh	@ mh
5	4" Stub	4	11.5' Rt.	@ mh	@ mh
6	4" Stub	3	11.5' Rt.	@ mh	@ mh
7	Wye Ext	1	10' Lt.	Wye	Wye
8	Wye Ext	2	10' Rt.	Wye	Wye
9	4" Stub	6	11.5' Rt.	@ mh	@ mh

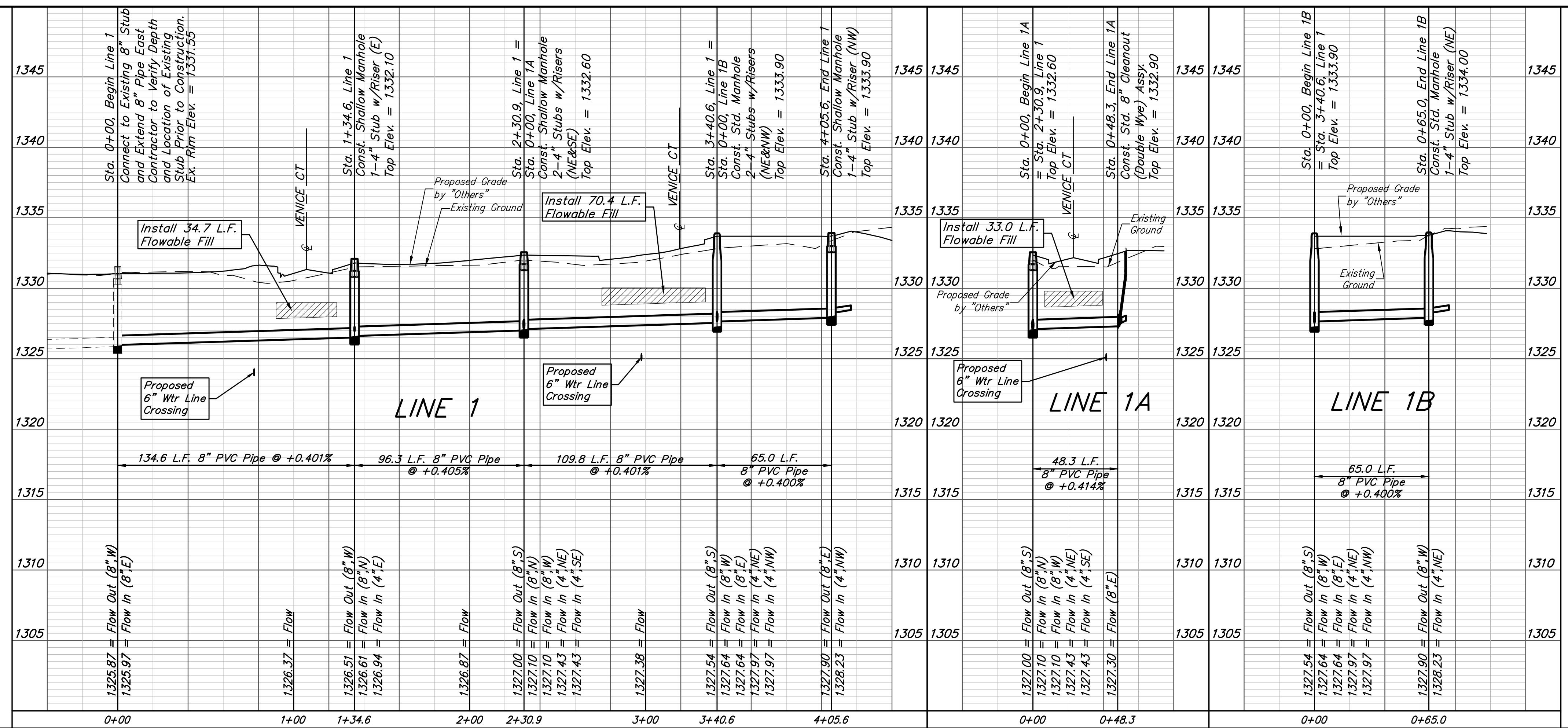


SEWER SERVICE TABLE

NUMBER	TYPE	LOCATION				FOR INFORMATION ONLY	
		LOT NO.	BLOCK NO.	LINE NO.	STATION/DIRECTION	APPROXIMATE LENGTH 4" PIPE	
						VERTICAL	HORIZONTAL
1	4" Stub	9	A	1	1+34.6/Rt.	1'	10'
2	4" Stub	8	A	1	2+30.9/Rt.	1'	10'
3	4" Stub	7	A	1	2+30.9/Rt.	1'	10'
4	4" Stub	5	A	1	3+40.6/Rt.	1.6'	11.5'
5	4" Stub	4	A	1	3+40.6/Rt.	1.6'	11.5'
6	4" Stub	3	A	1	4+05.6/Rt.	1.2'	11.5'
7	Wye Ext	1	A	1A	0+48.0/Lt.	1.3'	10'
8	Wye Ext	2	A	1A	0+48.0/Rt.	1.3'	10'
9	4" Stub	6	A	1B	0+65.0/Rt.	1.2'	11.5'

NOTE: If the vertical length is greater than zero, the Vertical Riser Pipe shall be extended to 2' minimum above ground water elevation and 4' maximum below proposed ground elevation. 4" Riser Pipes extended from 8" Cleanout Wyes to be bid as "Riser Assembly 4", Vertical"

The Contractor shall be required to backfill trench with sand from Sta. 0+00, Line 1 to Sta. 4+05.6, Line 1 except areas where Flowable Fill is called out and from Sta. 0+00, Line 1B to Sta. 0+65.0, Line 1B. To be bid as "L.F. Sand Backfill Jetted and Vibrated"



Baughman Siena Lakes 2nd Addition - Phase 1 & 2
LINE 1, 1A, & 1B
 Sanitary Sewer Improvements

Baughman Company, P.A. 315 Ellis St. Wichita, KS 67211 P 316-262-7271 F 316-262-0149
 ENGINEERING | SURVEYING | PLANNING | LANDSCAPE ARCHITECTURE

PROJECT NUMBER: 468-85270
 DESIGN: AEG
 DRAWN: JAK
 APPROVED: [Signature]
 DATE: 9/11/18

REVISIONS:

SCALE: Noted
 SHEET: **2 OF 18**

C:\Projects\Siena Lakes\Engineering\Phase 3\SS 1804E992\SS PLANS.dwg

BENCHMARKS:
 Chiseled square at the end of the top of curb at the southeast corner of Ridge Port and 37th ST N.
 Elev. = 1333.05 NAVD88

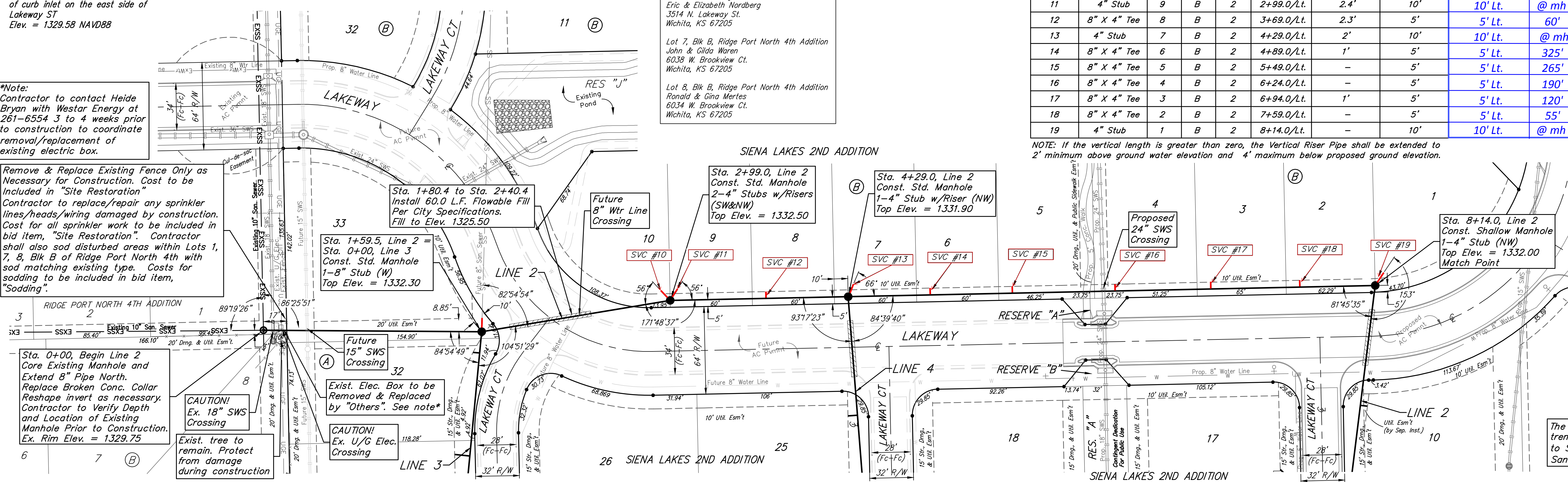
Chiseled square on the south side of curb inlet on the east side of Lakeway ST.
 Elev. = 1329.58 NAVD88

***Note:**
 Contractor to contact Heide Bryan with Westar Energy at 261-6554 3 to 4 weeks prior to construction to coordinate removal/replacement of existing electric box.

Remove & Replace Existing Fence Only as Necessary for Construction. Cost to be Included in "Site Restoration"
 Contractor to replace/repair any sprinkler lines/heads/wiring damaged by construction. Cost for all sprinkler work to be included in bid item, "Site Restoration". Contractor shall also sod disturbed areas within Lots 1, 7, 8, Blk B of Ridge Port North 4th with sod matching existing type. Costs for sodding to be included in bid item, "Sodding".

Sta. 0+00, Begin Line 2 Core Existing Manhole and Extend 8" Pipe North. Replace Broken Conc. Collar Reshape invert as necessary. Contractor to Verify Depth and Location of Existing Manhole Prior to Construction. Ex. Rim Elev. = 1329.75

CAUTION! Ex. 18" SWS Crossing
 Exist. tree to remain. Protect from damage during construction



LOT OWNERSHIPS:
 Lot 1, Blk B, Ridge Port North 4th Addition
 Eric & Elizabeth Nordberg
 3514 N. Lakeway St.
 Wichita, KS 67205

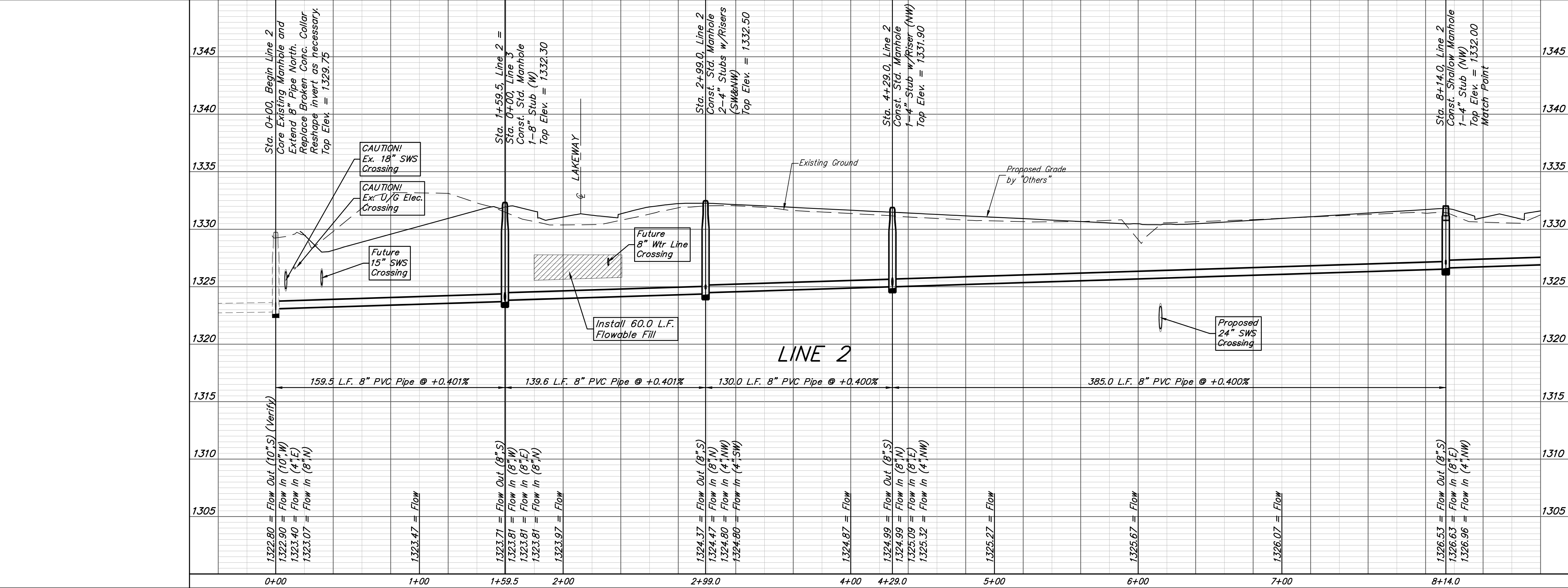
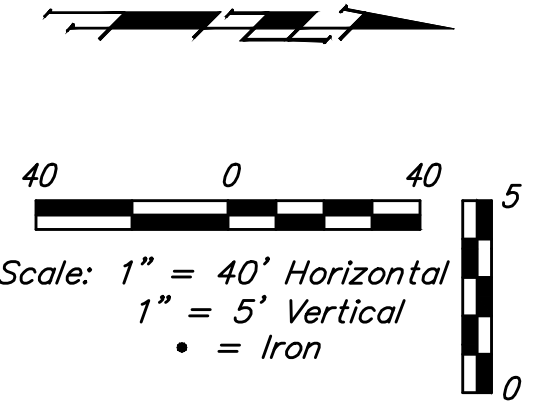
Lot 7, Blk B, Ridge Port North 4th Addition
 John & Gilda Warren
 6038 W. Brookview Ct.
 Wichita, KS 67205

Lot 8, Blk B, Ridge Port North 4th Addition
 Ronald & Gina Mertes
 6034 W. Brookview Ct.
 Wichita, KS 67205

SEWER SERVICE TABLE

NUMBER	TYPE	LOCATION			FOR INFORMATION ONLY		DISTANCE FROM MAIN TO RISER (LT./RT.)	DISTANCE FROM	
		LOT NO.	BLOCK NO.	LINE STATION/DIRECTION	APPROXIMATE LENGTH 4" PIPE			USMH	DSMH
					VERTICAL	HORIZONTAL			
10	4" Stub	10	B	2	2+99.0/Lt.	2.4'	10'	10' Lt.	@ mh @ mh
11	4" Stub	9	B	2	2+99.0/Lt.	2.4'	10'	10' Lt.	@ mh @ mh
12	8" X 4" Tee	8	B	2	3+69.0/Lt.	2.3'	5'	5' Lt.	60' 70'
13	4" Stub	7	B	2	4+29.0/Lt.	2'	10'	10' Lt.	@ mh @ mh
14	8" X 4" Tee	6	B	2	4+89.0/Lt.	1'	5'	5' Lt.	325' 60'
15	8" X 4" Tee	5	B	2	5+49.0/Lt.	-	5'	5' Lt.	265' 120'
16	8" X 4" Tee	4	B	2	6+24.0/Lt.	-	5'	5' Lt.	190' 195'
17	8" X 4" Tee	3	B	2	6+94.0/Lt.	1'	5'	5' Lt.	120' 265'
18	8" X 4" Tee	2	B	2	7+59.0/Lt.	-	5'	5' Lt.	55' 330'
19	4" Stub	1	B	2	8+14.0/Lt.	-	10'	10' Lt.	@ mh @ mh

NOTE: If the vertical length is greater than zero, the Vertical Riser Pipe shall be extended to 2' minimum above ground water elevation and 4' maximum below proposed ground elevation.



The Contractor shall be required to backfill trench with sand from Sta. 2+40.4, Line 1 to Sta. 8+14.0, Line 1. To be bid as "L.F. Sand Backfill Jetted and Vibrated"



Baughman Siena Lakes 2nd Addition - Phase 1 & 2
LINE 2
 Sanitary Sewer Improvements

Baughman Company, P.A. 315 Ellis St. Wichita, KS 67211 P 316-262-7271 F 316-262-0149
 ENGINEERING | SURVEYING | PLANNING | LANDSCAPE ARCHITECTURE

PROJECT NUMBER: 468-85270
 DESIGN: AEG
 DRAWN: JAK
 APPROVED: [Signature]
 DATE: 9/11/18

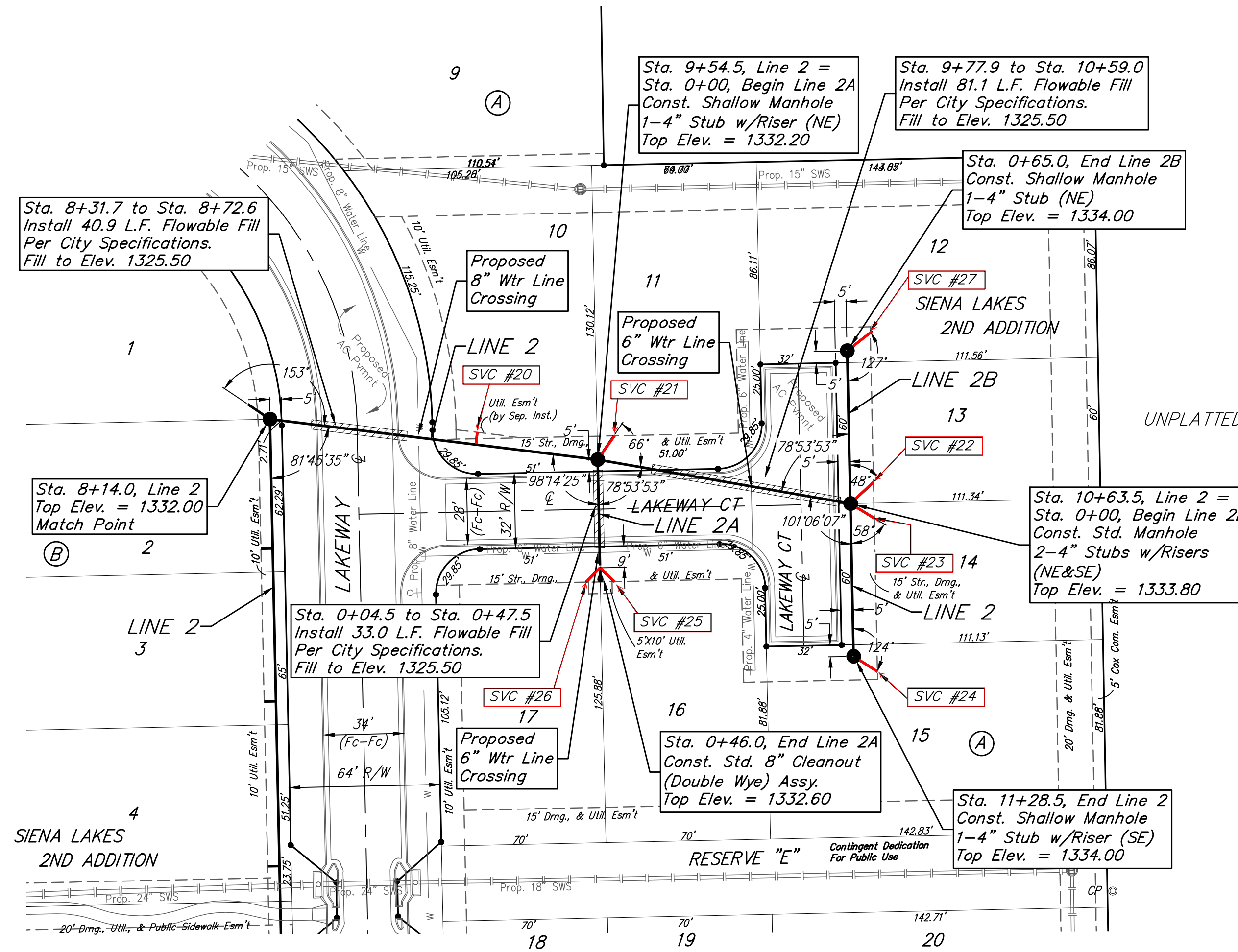
REVISIONS:

SCALE: Noted
 SHEET: **3 OF 18**

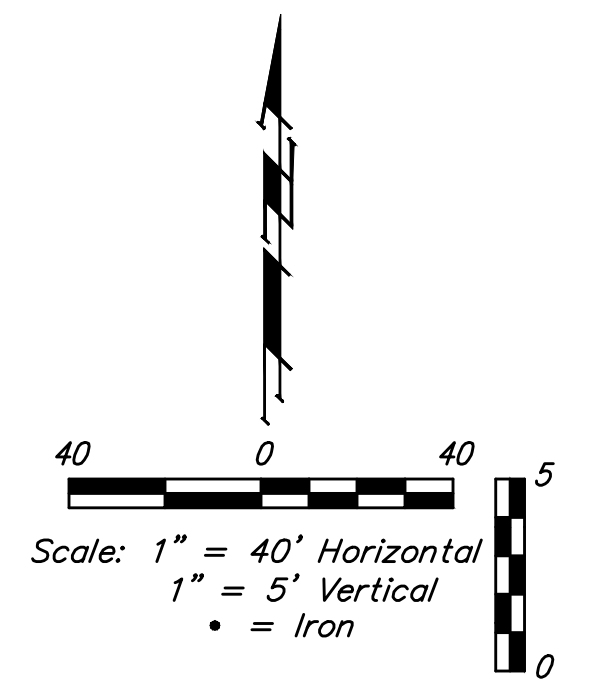
C:\Projects\Siena Lakes\Engineering\Phase 3\SS 1804E992\SS PLANS.dwg

BENCHMARKS:
 Chiseled square at the end of the top of curb at the southeast corner of Ridge Port and 37th ST N.
 Elev. = 1333.05 NAVD88

Chiseled square on the south side of curb inlet on the east side of Lakeway ST.
 Elev. = 1329.58 NAVD88



NUMBER	TYPE	LOT NO.	DISTANCE FROM MAIN TO RISER (LT./RT.)	DISTANCE FROM	
				USMH	DSMH
20	8" x 4" Tee	10	7.5' Lt.	52.6'	87.9'
21	4" Stub	11	12.2' Lt.	@ mh	@ mh
22	4" Stub	13	13.4' Lt.	@ mh	@ mh
23	4" Stub	14	13.4' Lt.	@ mh	@ mh
24	4" Stub	15	12' Lt.	@ mh	@ mh
25	Wye Ext	16	10' Lt.	Wye	Wye
26	Wye Ext	17	10' Rt.	Wye	Wye
27	4" Stub	12	12.5' Rt.	@ mh	@ mh

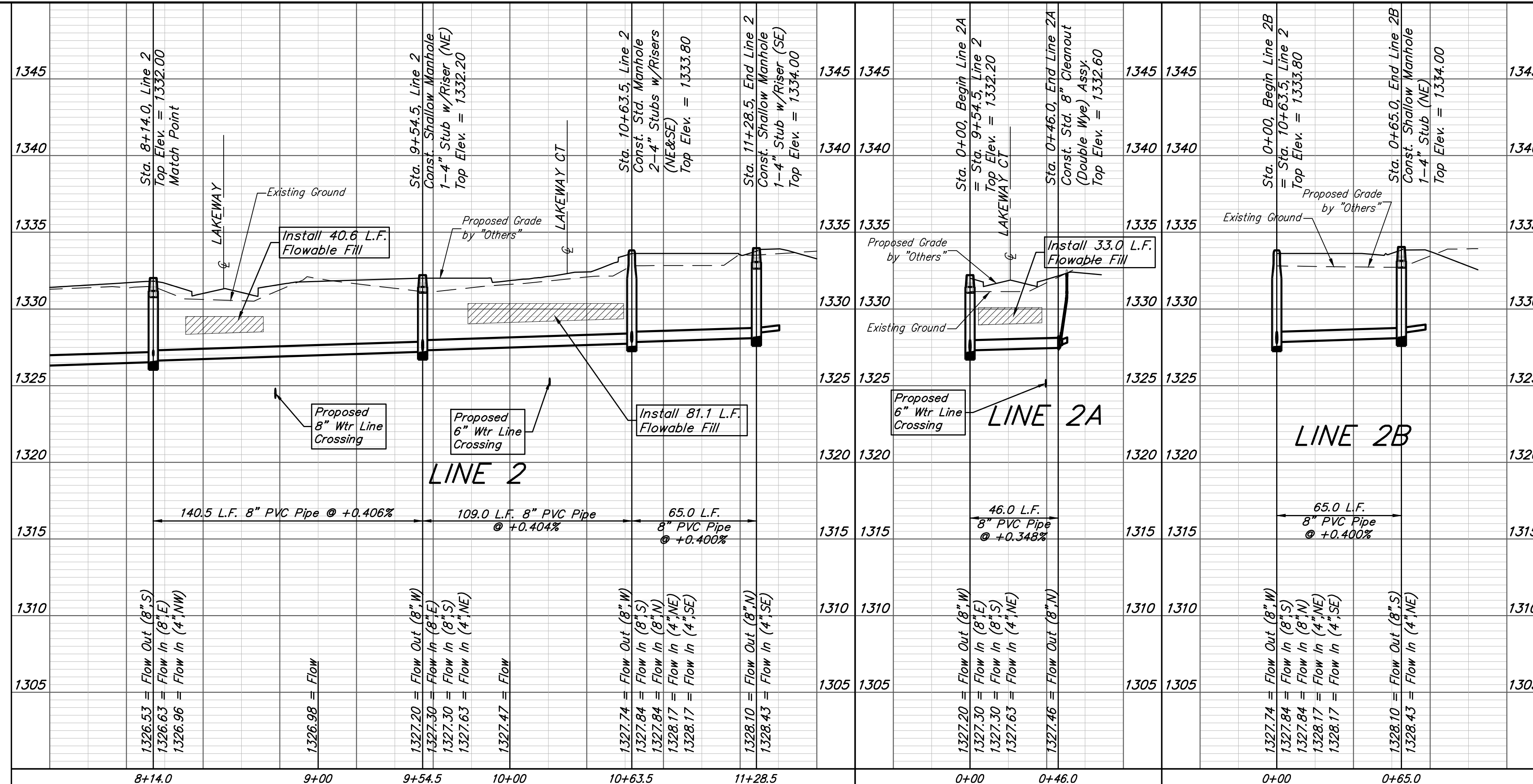


The Contractor shall be required to backfill trench with sand from Sta. 8+72.6, Line 2 to Sta. 11+28.5, Line 2 except where flowable fill is called out and from Sta. 0+00, Line 2B to Sta. 0+65.0, Line 2B. To be bid as "L.F. Sand Backfill Jetted and Vibrated"

SEWER SERVICE TABLE

NUMBER	TYPE	LOCATION				FOR INFORMATION ONLY	
		LOT NO.	BLOCK NO.	LINE NO.	STATION/DIRECTION	APPROXIMATE LENGTH 4" PIPE	
						VERTICAL	HORIZONTAL
20	8" X 4" Tee	10	A	2	9+01.9/Lt.	-	7.5'
21	4" Stub	11	A	2	9+54.5/Lt.	1.0'	12.2'
22	4" Stub	13	A	2	10+63.5/Lt.	1.9'	13.4'
23	4" Stub	14	A	2	10+63.5/Lt.	1.9'	13.4'
24	4" Stub	15	A	2	11+28.5/Lt.	1.1'	12'
25	Wye Ext	16	A	2A	0+46.0/Lt.	1.0'	10'
26	Wye Ext	17	A	2A	0+46.0/Rt.	1.0'	10'
27	4" Stub	12	A	2B	0+65.0/Rt.	-	12.5'

NOTE: If the vertical length is greater than zero, the Vertical Riser Pipe shall be extended to 2' minimum above ground water elevation and 4' maximum below proposed ground elevation.
 4" Riser Pipes extended from 8" Cleanout Wyes to be bid as "Riser Assembly 4", Vertical"



Baughman Siena Lakes 2nd Addition - Phase 1 & 2
LINE 2, 2A, & 2B
 Sanitary Sewer Improvements

Baughman Company, P.A. 315 Ellis St. Wichita, KS 67211 P 316-262-7271 F 316-262-0149
 ENGINEERING | SURVEYING | PLANNING | LANDSCAPE ARCHITECTURE

PROJECT NUMBER: 468-85270
 DESIGN: AEG
 DRAWN: JAK
 APPROVED: [Signature]
 DATE: 9/11/18

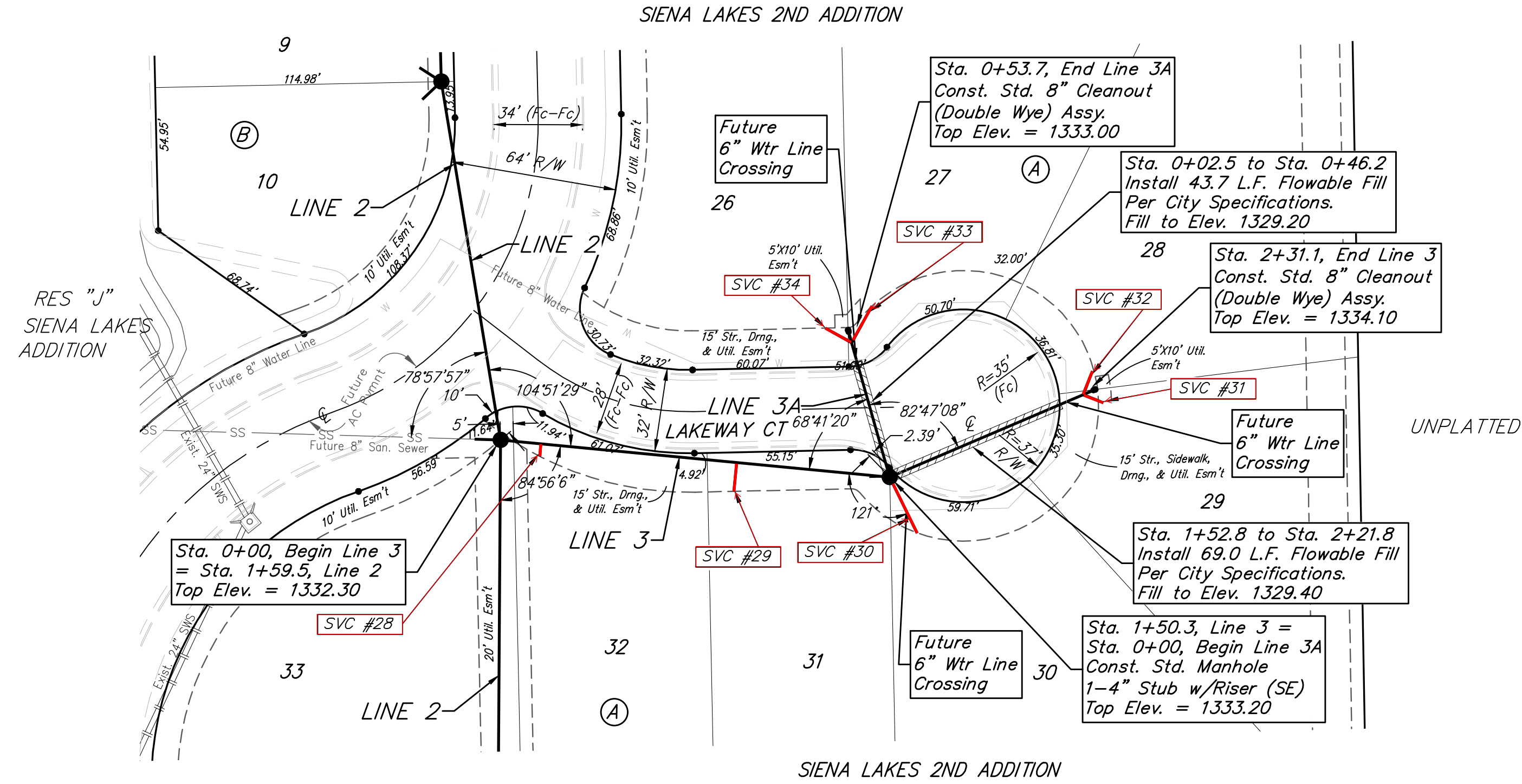
REVISIONS:

SCALE: Noted
 SHEET: 4 OF 18

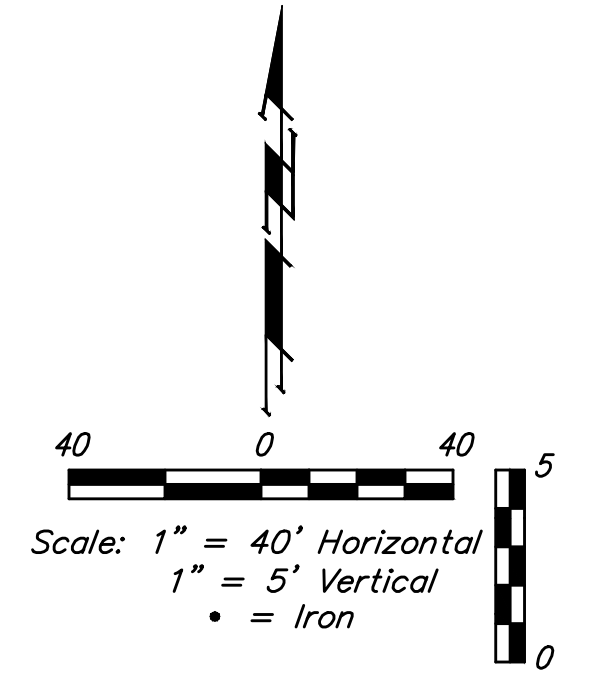
C:\Projects\Siena Lakes\Engineering\Phase 3\SS 1804E992\SS PLANS.dwg

BENCHMARKS:
 Chiseled square at the end of the top of curb at the southeast corner of Ridge Port and 37th ST N.
 Elev. = 1333.05 NAVD88

Chiseled square on the south side of curb inlet on the east side of Lakeway ST
 Elev. = 1329.58 NAVD88



NUMBER	TYPE	LOT NO.	DISTANCE FROM MAIN TO RISER (LT./RT.)	DISTANCE FROM	
				USMH	DSMH
28	8" x 4" Tee	32	5' Rt.	134.6'	15.7'
29	8" x 4" Tee	31	11' Rt.	59.1'	91.2'
30	4" Stub	30	41' Rt.	@ mh	@ mh
31	Wye Ext	29	10' Rt.	@ mh	@ mh
32	Wye Ext	28	10' Lt.	@ mh	@ mh
33	Wye Ext	27	16' Rt.	Wye	Wye
34	Wye Ext	26	11.5' Lt.	Wye	Wye

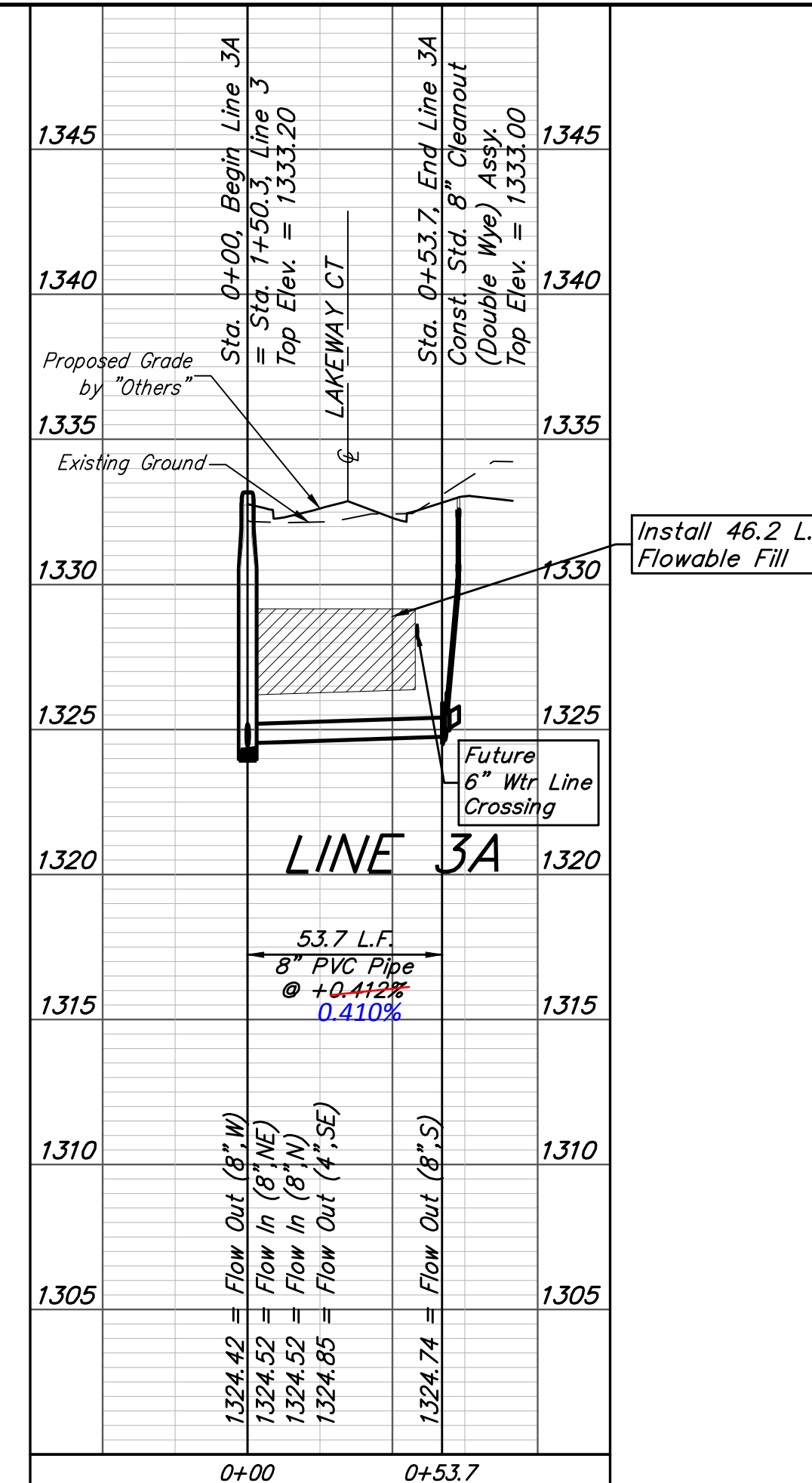
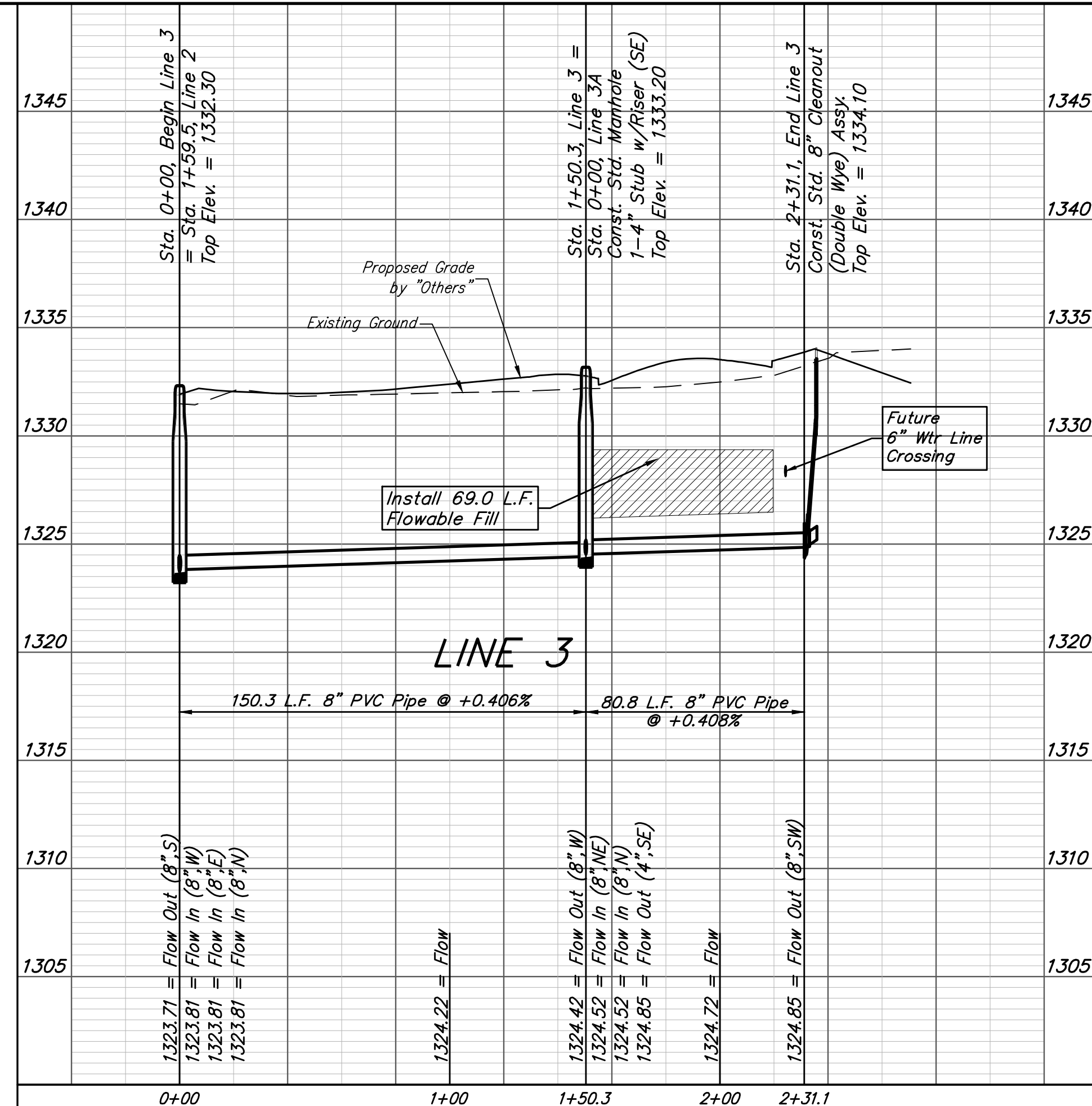


SEWER SERVICE TABLE

NUMBER	TYPE	LOCATION				FOR INFORMATION ONLY	
		LOT NO.	BLOCK NO.	LINE NO.	STATION/DIRECTION	APPROXIMATE LENGTH 4" PIPE	
						VERTICAL	HORIZONTAL
28	8" X 4" Tee	32	A	3	0+15.7/Rt.	4.4'	5'
29	8" X 4" Tee	31	A	3	0+91.2/Rt.	4.5'	11'
30	4" Stub	30	A	3	1+50.3/Rt.	4.4'	41'
31	Wye Ext	29	A	3	2+31.1/Rt.	4.8'	10'
32	Wye Ext	28	A	3	2+31.1/Lt.	4.9'	10'
33	Wye Ext	27	A	3A	0+53.7/Rt.	3.3'	16'
34	Wye Ext	26	A	3A	0+53.7/Lt.	3.3'	11.5'

NOTE: If the vertical length is greater than zero, the Vertical Riser Pipe shall be extended to 2' minimum above ground water elevation and 4' maximum below proposed ground elevation. 4" Riser Pipes extended from 8" Cleanout Wyes to be bid as "Riser Assembly 4", Vertical"

The Contractor shall be required to backfill trench with sand from Sta. 0+00, Line 3 to Sta. 1+50.3, Line 3. To be bid as "L.F. Sand Backfill Jetted and Vibrated"



Baughman Siena Lakes 2nd Addition - Phase 1 & 2
LINE 3 & LINE 3A
 Sanitary Sewer Improvements

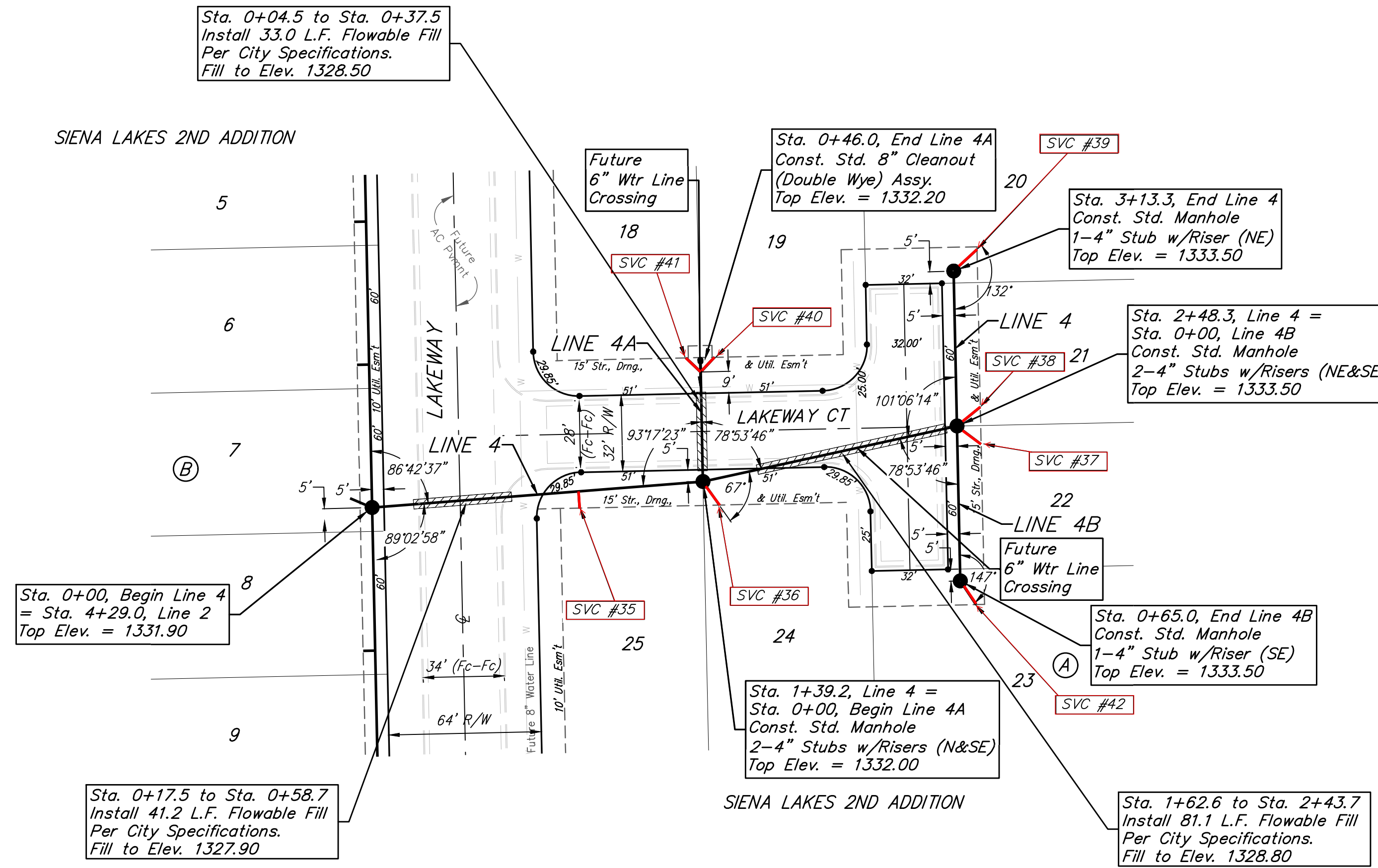
PROJECT NUMBER: 468-85270
 DESIGN: AEG
 DRAWN: JAK
 APPROVED: [Signature]
 DATE: 9/11/18

SCALE: Noted
 SHEET: **5 OF 18**

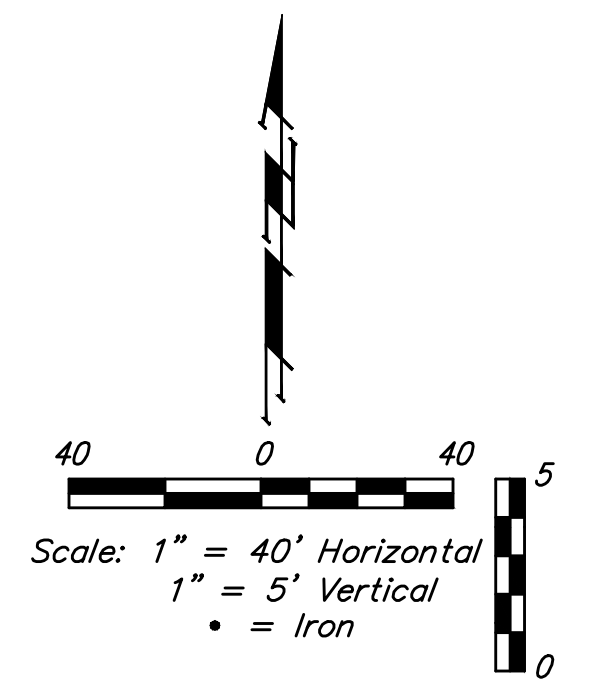
BENCHMARKS:
 Chiseled square at the end of the top of curb at the southeast corner of Ridge Port and 37th ST N.
 Elev. = 1333.05 NAVD88

Chiseled square on the south side of curb inlet on the east side of Lakeway ST
 Elev. = 1329.58 NAVD88

SIENA LAKES 2ND ADDITION



NUMBER	TYPE	LOT NO.	DISTANCE FROM MAIN TO RISER (LT./RT.)	DISTANCE FROM	
				USMH	DSMH
35	8" x 4" Tee	25	7' Rt.	52.4'	86.8'
36	4" Stub	24	10' Rt.	@ mh	@ mh
37	4" Stub	22	10' Rt.	@ mh	@ mh
38	4" Stub	21	10' Rt.	@ mh	@ mh
39	4" Stub	20	10' Rt.	@ mh	@ mh
40	Wye Ext	19	9' Rt.	Wye	Wye
41	Wye Ext	18	9' Lt.	Wye	Wye
42	4" Stub	23	10' Lt.	@ mh	@ mh

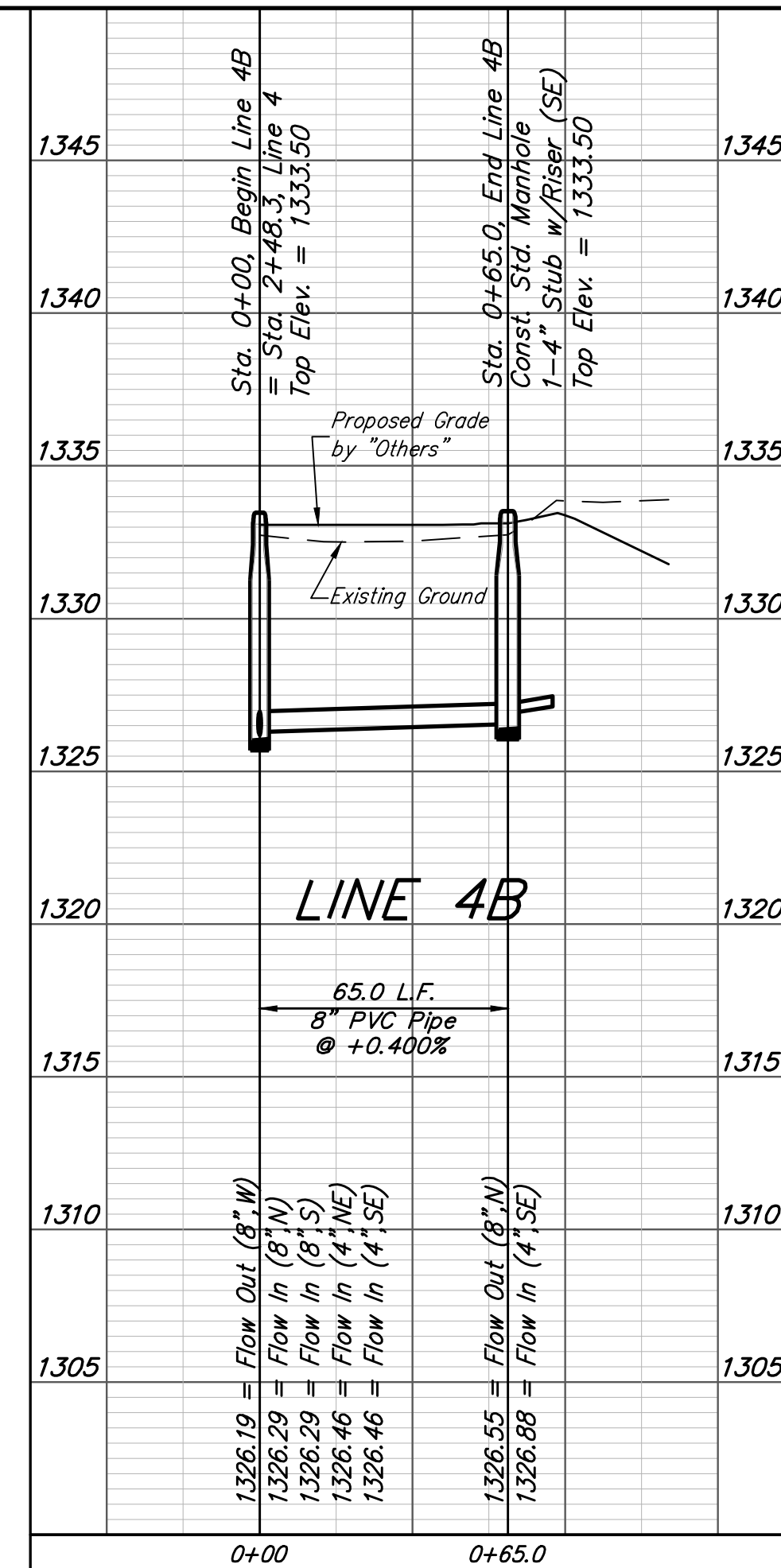
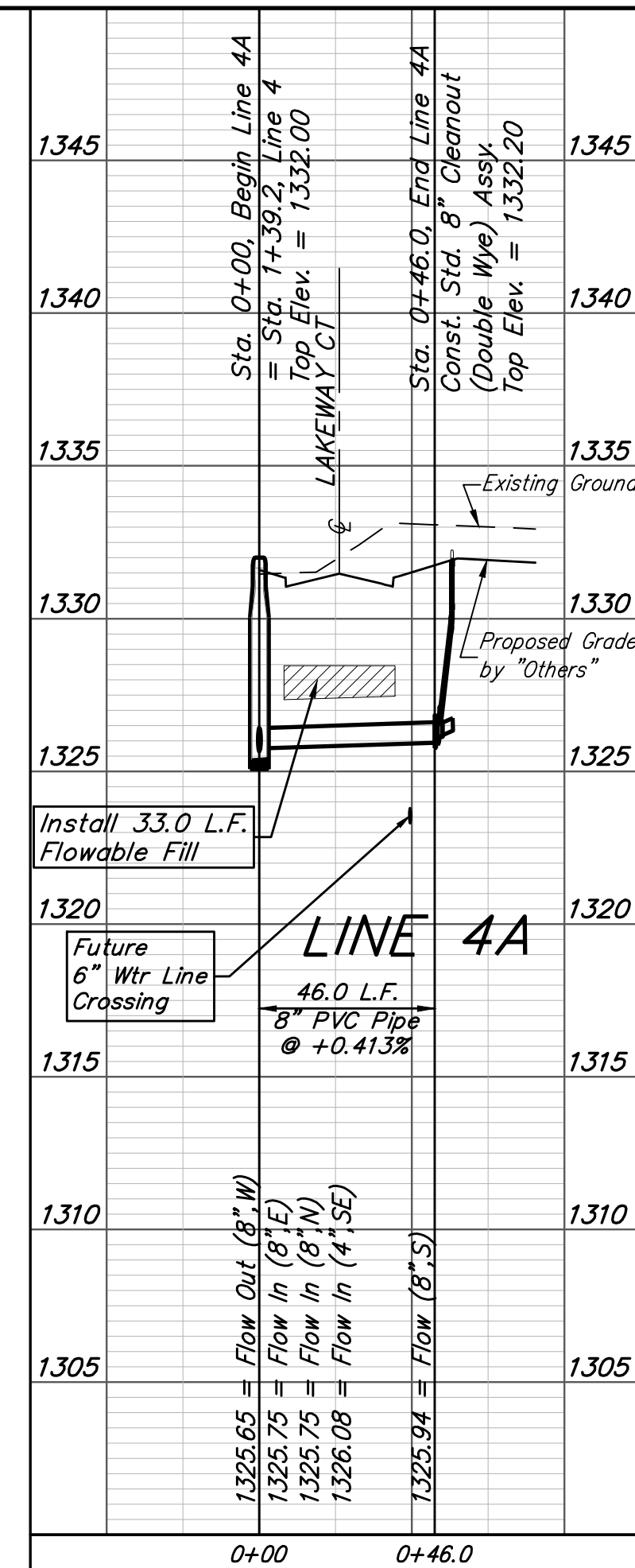
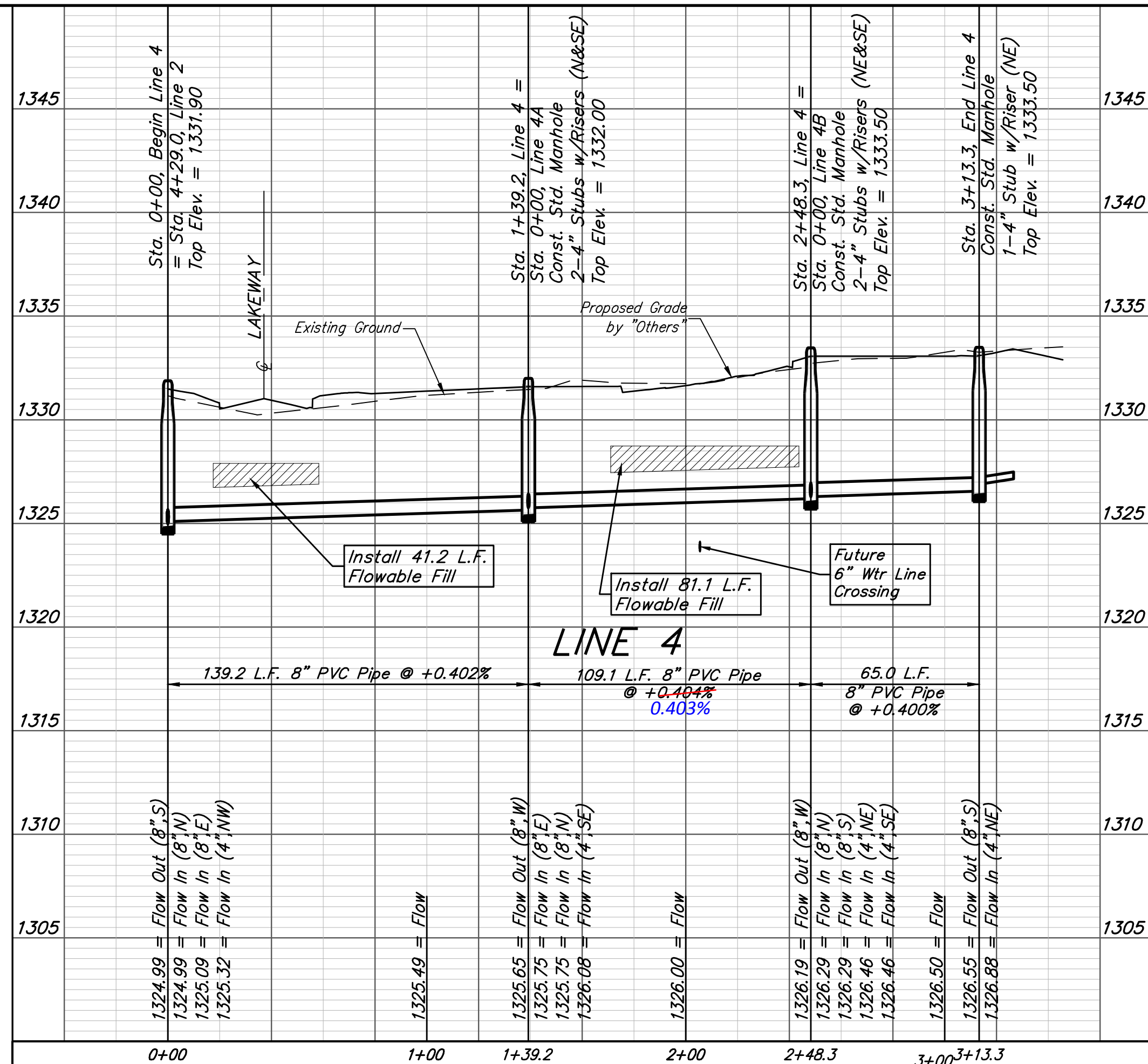


The Contractor shall be required to backfill trench with sand from Sta. 0+58.7, Line 4 to Sta. 3+13.3, Line 4 except where flowable fill is called out and from Sta. 0+00, Line 4B to Sta. 0+65.0, Line 4B. To be bid as "L.F. Sand Backfill Jetted and Vibrated"

SEWER SERVICE TABLE

NUMBER	TYPE	LOCATION				FOR INFORMATION ONLY	
		LOT NO.	BLOCK NO.	LINE NO.	STATION/DIRECTION	APPROXIMATE LENGTH 4" PIPE	
						VERTICAL	HORIZONTAL
35	8" X 4" Tee	25	A	4	0+86.8/Rt.	2.2'	7'
36	4" Stub	24	A	4	1+39.2/Rt.	2'	10'
37	4" Stub	22	A	4	2+48.3/Rt.	2.9'	10'
38	4" Stub	21	A	4	2+48.3/Rt.	2.9'	10'
39	4" Stub	20	A	4	3+13.3/Rt.	2.6'	10'
40	Wye Ext	19	A	4A	0+46.0/Rt.	2'	9'
41	Wye Ext	18	A	4A	0+46.0/Lt.	2'	9'
42	4" Stub	23	A	4B	0+65.0/Lt.	2.7'	10'

NOTE: If the vertical length is greater than zero, the Vertical Riser Pipe shall be extended to 2' minimum above ground water elevation and 4' maximum below proposed ground elevation. 4" Riser Pipes extended from 8" Cleanout Wyes to be bid as "Riser Assembly 4", Vertical"



Baughman Siena Lakes 2nd Addition - Phase 1 & 2
LINE 4, 4A, & 4B
 Sanitary Sewer Improvements

PROJECT NUMBER: 468-85270
 DESIGN: AEG
 DRAWN: JAK
 APPROVED: [Signature]
 DATE: 9/11/18
 SCALE: Noted
 SHEET: 6 OF 18

SIENA LAKES 2ND

AN ADDITION TO WICHITA, SEDGWICK COUNTY, KANSAS

State of Kansas) SS Sedgwick County) We, *Baughman Company, P.A.*, Surveyors in aforesaid county and state do hereby certify that we have surveyed and platted "SIENA LAKES 2ND", an Addition to Wichita, Sedgwick County, Kansas and that the accompanying plat is a true and correct exhibit of the property surveyed, described as All of Lots 42, 43, 44, 45, 46, 47, 48, 49, 50, 51, 52, 53, 54, 55, 56, 57, 58, 59, 60, 61, 62, 63, 64, 65, 66, 67, 68, 69, 70, 71, 72, 73, 74, and 75, Block 1, TOGETHER with all of Lots 10, 11, 12, 13, 14, 15, 16, 17, 18, 19, 20, 21, 22, 23, 24, 25, 26, 27, 28, 29, 30, 31, 32, 33, 34, 35, 36, 37, 38, 39, 40, 41, 42, 43, and 44, Block 2, TOGETHER with all of Reserves "F", "G", "H", "I", and "M", TOGETHER with all of the four Lakeway Cts., TOGETHER with all of Lakeway, all as platted and dedicated in Siena Lakes, an Addition to Wichita, Sedgwick County, Kansas, TOGETHER with that part of Venice as dedicated in said Siena Lakes lying east of and abutting the following described line: Beginning at the southwest corner of Lot 10 in said Block 2, said southwest corner also being a point on the north right-of-way line of said Venice; thence S01°12'55"E along the southerly prolongation of the west line of said Lot 10, 64.00 feet to a point on the south right-of-way line of said Venice, and for a point of termination, TOGETHER with that part of Reserve "J" in said Siena Lakes described as follows: Beginning at a deflection corner in the northeast line of said Reserve "J", said deflection corner also being the northeast corner of Lot 42 in said Block 1; thence S88°47'05"W along a segment of the east line of said Reserve "J", and along the north line of Lot 42 in said Block 1, 112.00 feet to a deflection corner in the east line of said Reserve "J", said deflection corner also being the northwest corner of Lot 42 in said Block 1; thence N01°12'55"W along the northerly prolongation of the west line of Lot 42 in said Block 1, 22.92 feet; thence N46°07'34"E, 64.05 feet to a point on the northeast line of said Reserve "J", said northeast line being a non-tangent curve to the right; thence southeasterly and southerly along said curve, through a central angle of 46°18'26" and having a radius of 118.00 feet, an arc distance of 95.37 feet, (having a chord length of 92.79 feet bearing S45°35'20"E), to the point of beginning, and TOGETHER with that part of said Reserve "J" described as follows: Beginning at a deflection corner in the southeast line of said Reserve "J", said deflection corner also being the southeast corner of Lot 51 in said Block 1; thence S01°12'55"E along a segment of the east line of said Reserve "J", and along the south line of Lot 51 in said Block 1, 104.60 feet to the point of beginning.

Existing public easements, building setbacks, access controls, and dedications, if any, being vacated by virtue of K.S.A. 12-512b, as amended. All being situated in the North Quarter of Section 34, Township 26 South, Range 1 West of the Sixth Principal Meridian, Sedgwick County, Kansas. *Baughman Company, P.A.*

My App't. Exp. _____, Notary Public
 _____, Surveyor
 Michael G. Conrey

We the undersigned holders of a mortgage on the above described property, do hereby consent to this plat of "SIENA LAKES 2ND", an Addition to Wichita, Sedgwick County, Kansas.
 _____, Notary Public
 _____, Register of Deeds
 _____, Deputy

State of Kansas) SS Sedgwick County) The foregoing instrument acknowledged before me, this _____ day of _____, 2018, by _____ of Southwest National Bank, on behalf of the bank.
 _____, Notary Public
 My App't. Exp. _____

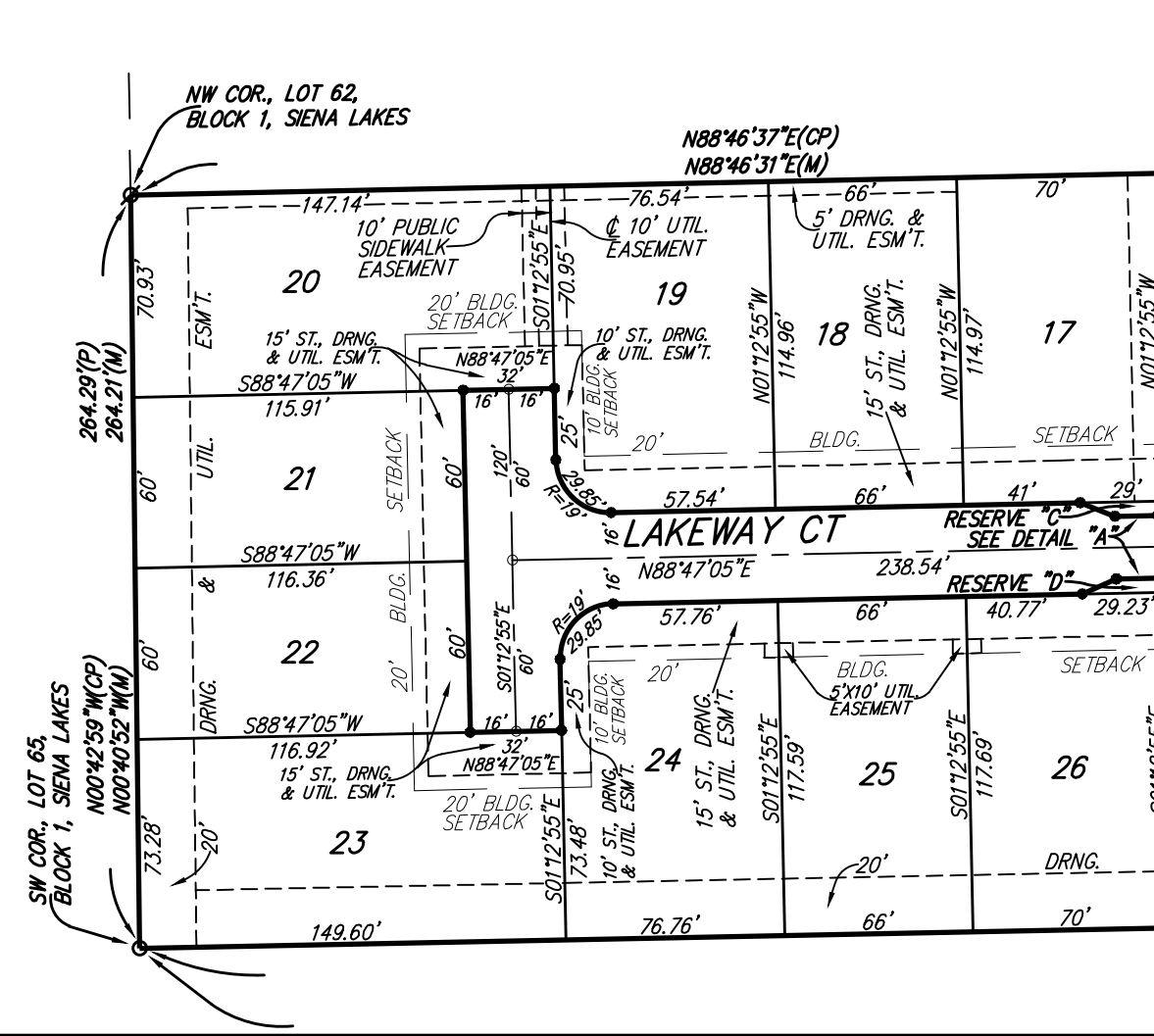
NOTE: A drainage plan has been developed for the plat and that all drainage easements, right-of-way and reserves shall remain of established grades or as modified with the approval of the applicable City or County Engineer and unobstructed to allow for the conveyance of stormwater in accordance with the Stormwater Manual.

Know all men by these presents that we, the undersigned, have caused the land in the surveyors certificate to be platted into Lots, Blocks, Streets and Reserves, to be known as "SIENA LAKES 2ND", an Addition to Wichita, Sedgwick County, Kansas. The utility easements are hereby granted as indicated for the construction and maintenance of all public utilities. The drainage and utility easements are hereby granted as indicated for drainage purposes and for the construction and maintenance of all public utilities. The street, drainage, and utility easements are hereby granted as indicated for street purposes including sidewalks, for drainage purposes, and for the construction and maintenance of all public utilities. The drainage, utility, and public sidewalk easement is hereby granted as indicated for drainage purposes, for the construction and maintenance of all public utilities, and for the construction and maintenance of a public sidewalk, and no fences or other obstructions shall be constructed or placed on or within this easement. No signs, light poles, private drainage systems, masonry trash enclosures or other structures shall be located within public utility easements unless permitted by the Public Works Department of the appropriate governing body. The drainage easements are hereby granted as indicated for drainage purposes. The public sidewalk easement is hereby granted as indicated for the construction and maintenance of a public sidewalk and no fences or other obstructions shall be constructed or placed on or within this easement. The drainage and public sidewalk easement is hereby granted as indicated for drainage purposes and for the construction and maintenance of a public sidewalk, and no fences or other obstructions shall be constructed or placed on or within this easement. The streets are hereby dedicated to and for the use of the public. Reserves "A", "B", "C", and "D" are reserved for irrigation, public sidewalks, landscaping, drainage, drainage structures and utilities. Reserve "E" is reserved for irrigation, walls, public sidewalks, signage, landscaping, gazebos, playground equipment, berms, drainage, drainage structures and utilities as confined to easements. Reserve "E" is contingent dedication for public use and shall become effective if the City of Wichita determines a need for such dedication. Reserves "A", "B", "C", "D", and "E" shall be owned and maintained by the homeowners association for the addition. Access controls shall be as depicted on the face of the plat and are hereby granted to the City of Wichita, Kansas. The Minimum Building Pad Elevations for the lowest opening to the structures shall be as indicated on the face of the plat.

Siena Lakes #2, LLC, a Kansas limited liability company
 _____, Manager
 Jay W. Russell, President of J. Russell Development and Management, Inc.

State of Kansas) SS Sedgwick County) The foregoing instrument acknowledged before me, this _____ day of _____, 2018, by Jay W. Russell, President of J. Russell Development and Management, Inc., Manager of Siena Lakes #2, LLC, a Kansas limited liability company, on behalf of the limited liability company.
 _____, Notary Public
 My App't. Exp. _____

State of Kansas) SS Sedgwick County) This is to certify that this plat has been filed for record in the office of the Register of Deeds, this _____ day of _____, 2018 at _____ o'clock _____ M, and is duly recorded.
 _____, County Clerk
 _____, Register of Deeds
 _____, Deputy



This plat of "SIENA LAKES 2ND", an Addition to Wichita, Sedgwick County, Kansas has been submitted to and approved by the Wichita-Sedgwick County Metropolitan Area Planning Commission, Wichita, Kansas.
 Dated this _____ day of _____, 2018.
 Wichita-Sedgwick County Metropolitan Area Planning Commission

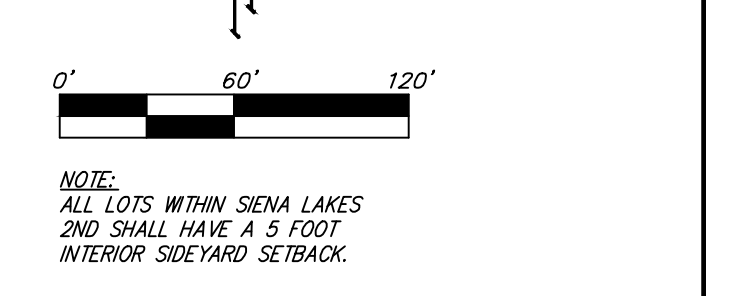
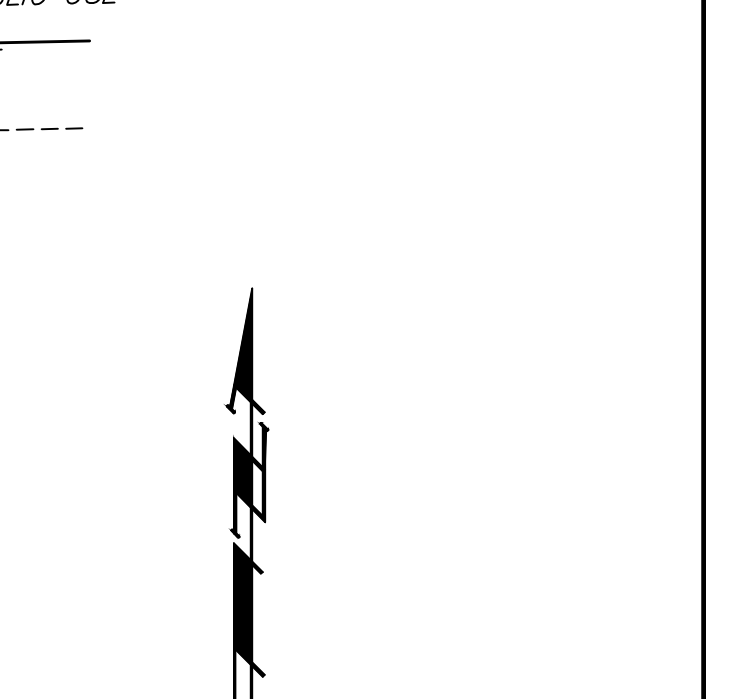
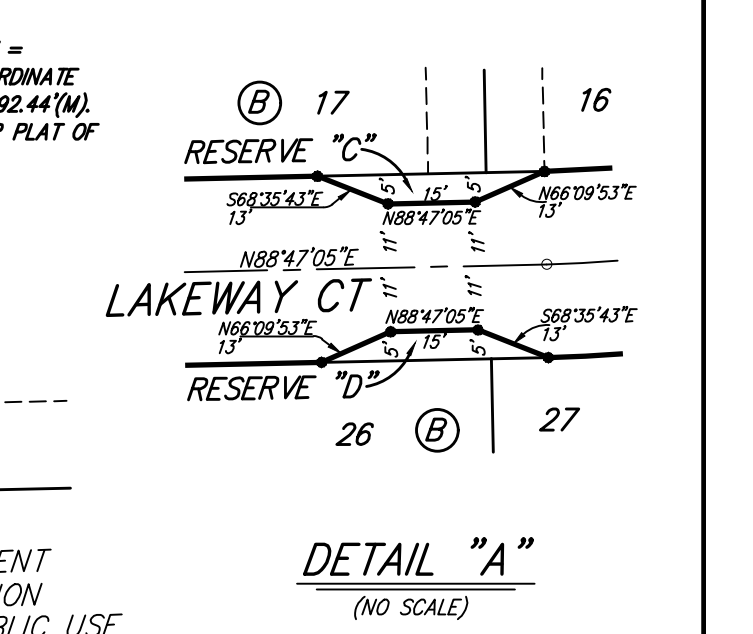
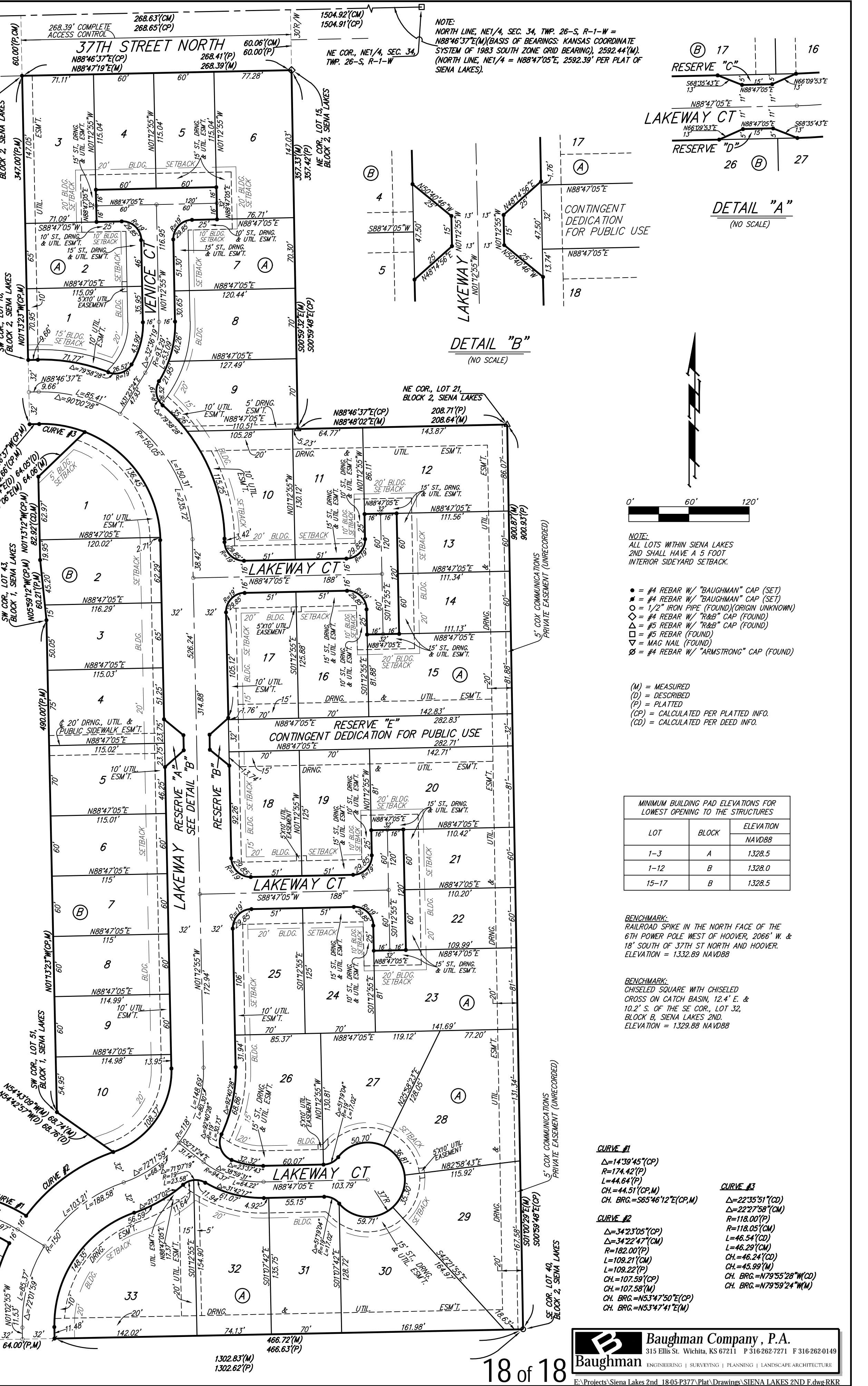
_____ Chairman
 Joseph A. Johnson
 _____ Secretary
 Dale Miller
 _____ Mayor,
 Jeff Longwell, City of Wichita
 _____ City Clerk
 Karen Sublett

This plat approved and all dedications shown hereon accepted by the City Council of the City of Wichita, Kansas, this _____ day of _____, 2018.

Reviewed in accordance with K.S.A. 58-2005 on this _____ day of _____, 2018.
 _____, Manager
 Tricia L. Robello, P.S. #1246
 Deputy County Surveyor
 Sedgwick County, Kansas

Entered on transfer record this _____ day of _____, 2018.
 _____, County Clerk
 Kelly B. Arnold

_____ Register of Deeds
 Tonya Buckingham
 _____ Deputy
 Judy J. Paget



- = #4 REBAR W/ "BAUGHMAN" CAP (SET)
 - = #4 REBAR W/ "BAUGHMAN" CAP (SET)
 - = 1/2" IRON PIPE (FOUND)(ORIG UNKNOWN)
 - ◇ = #4 REBAR W/ "TRAB" CAP (FOUND)
 - = #3 REBAR W/ "TRAB" CAP (FOUND)
 - ▽ = MAG NAIL (FOUND)
 - ⊗ = #4 REBAR W/ "ARMSTRONG" CAP (FOUND)
- (M) = MEASURED
 (D) = DESCRIBED
 (P) = PLATTED
 (CP) = CALCULATED PER PLATTED INFO.
 (CD) = CALCULATED PER DEED INFO.

LOT	BLOCK	ELEVATION
1-3	A	1328.5
1-12	B	1328.0
15-17	B	1328.5

BENCHMARK:
 RAILROAD SPIKE IN THE NORTH FACE OF THE 6TH POWER POLE WEST OF HOOVER, 2068' W. & 18' SOUTH OF 37TH ST NORTH AND HOOVER. ELEVATION = 1332.89 NAVD88

BENCHMARK:
 CHISELED SQUARE WITH CHISELED CROSS ON CATCH BASIN, 12.4' E & 10.2' S. OF THE SE COR, LOT 32, BLOCK B, SIENA LAKES 2ND. ELEVATION = 1329.88 NAVD88

- CURVE #1**
 $\Delta = 143^{\circ}45'(CP)$
 $R = 174.42'(P)$
 $L = 44.64'(P)$
 $CH. BRG. = S65^{\circ}46'12''E(CP, M)$
- CURVE #2**
 $\Delta = 342^{\circ}30'(CP)$
 $R = 182.00'(P)$
 $L = 108.21'(OM)$
 $L = 109.22'(P)$
 $CH. BRG. = N79^{\circ}59'24''W(CD)$
 $CH. BRG. = N79^{\circ}59'24''W(M)$
- CURVE #3**
 $\Delta = 223^{\circ}51'(CD)$
 $R = 118.00'(P)$
 $L = 46.54'(CD)$
 $L = 46.29'(OM)$
 $CH. BRG. = N53^{\circ}47'41''E(M)$