

# GENERAL NOTES

- THE CONTRACTOR SHALL COMPLY WITH ALL APPLICABLE SAFETY REGULATIONS. ALL CONSTRUCTION SHALL BE COMPLETED FOLLOWING CURRENT CITY STANDARD SPECIFICATIONS AND SPECIAL PROVISIONS.
- CONTRACTOR WILL BE REQUIRED TO PROVIDE NOTICE TO UTILITY COMPANIES A MINIMUM OF SEVENTY-TWO (72) HOURS PRIOR TO ANY EXCAVATION, AS FOLLOWS:  
 KANSAS ONE-CALL 687-2470  
 THE CONTRACTOR MUST NOTIFY THE FOLLOWING IN CASE OF AN EMERGENCY:  
 AT&T 1-800-246-8464  
 BLACK HILLS ENERGY (GAS) 1-800-694-8989  
 CITY OF WICHITA WATER & SEWER 1-316-219-8921  
 CITY OF WICHITA STORMWATER 1-316-268-4090  
 CITY OF WICHITA TRAFFIC 1-316-268-4034  
 COX COMMUNICATIONS 1-888-249-3530  
 KANSAS GAS SERVICE 1-888-482-4950  
 WESTAR ENERGY 1-800-544-4857
- UTILITY SERVICE LINES, POLES, ETC. ARE TO BE ADJUSTED AS NECESSARY BY OTHERS PRIOR TO CONSTRUCTION UNLESS THE PLANS SPECIFICALLY CALL FOR THEIR ADJUSTMENT BY THE CONTRACTOR OR UNLESS THE PLANS SPECIFICALLY IDENTIFY A UTILITY TO BE ADJUSTED BY ITS OWNER DURING CONSTRUCTION. EXISTING UTILITIES AND THEIR LOCATION, AS SHOWN ON THE PLANS, REPRESENT THE BEST INFORMATION OBTAINABLE FOR DESIGN. THE CONTRACTOR WILL BE REQUIRED TO WORK AROUND EXISTING UTILITIES WITHIN THE RIGHT-OF-WAY WHICH DO NOT CONFLICT WITH PROPOSED CONSTRUCTION.
- RUBBLE FROM THE REMOVAL OF MISCELLANEOUS STRUCTURES AND EXCESS EXCAVATION WHICH IS TO BE WASTED SHALL BE DISPOSED OF ON SITES TO BE PROVIDED BY THE CONTRACTOR. THESE SITES SHALL BE APPROVED BY THE ENGINEER AS TO SUITABILITY, APPEARANCE AND SITE LOCATION. LOCATIONS, IN THE OPINION OF THE ENGINEER, THAT WILL LEAVE AN UNSIGHTLY APPEARANCE WILL NOT BE APPROVED. ALL DISPOSAL SITES MUST BE APPROVED BY THE KANSAS DEPARTMENT OF HEALTH AND ENVIRONMENT. MATERIAL EITHER STOCKPILED OR DISPOSED OF IN A FLOOD PLAIN WILL REQUIRE A KANSAS STATE BOARD OF AGRICULTURE PERMIT. ANY MATERIAL DUMPED IN WATERS OF THE UNITED STATES OR WETLANDS IS SUBJECT TO U.S. CORPS OF ENGINEERS PERMITTING REGULATIONS. ANY MATERIAL BURIED OR STOCKPILED BEYOND APPROVED CONSTRUCTION LIMITS WILL REQUIRE ADDITIONAL ARCHAEOLOGICAL INVESTIGATIONS UNLESS BURIED IN A PREVIOUSLY APPROVED BORROW LOCATION.
- TREES AND SHRUBS IN PUBLIC RIGHT-OF-WAY WHICH ARE IN DIRECT CONFLICT WITH PROPOSED NEW CONSTRUCTION SHALL BE REMOVED BY THE CONTRACTOR WITH THE CITY ENGINEER'S APPROVAL. TREES AND SHRUBS WHICH ARE NOT IN DIRECT CONFLICT WITH PROPOSED NEW CONSTRUCTION SHALL BE SAVED AND PROTECTED FROM DAMAGE.
- THE CONTRACTOR SHALL GIVE ALL PROPERTY OWNERS AND/OR TENANTS OF DEVELOPED PROPERTY ABUTTING THE CONSTRUCTION OF THIS PROJECT A MINIMUM OF TEN (10) DAYS NOTICE PRIOR TO START OF CONSTRUCTION.
- THE CONTRACTOR SHALL BE RESPONSIBLE FOR PRESERVING PROPERTY IRONS. THE CONTRACTOR WILL BE REQUIRED TO RE-ESTABLISH ANY PROPERTY IRONS WHICH ARE DAMAGED OR DESTROYED BY HIS CONSTRUCTION OPERATIONS. SUCH IRONS SHALL BE RE-ESTABLISHED BY A LICENSED LAND SURVEYOR IN ACCORDANCE WITH STATE LAWS.
- THE ENGINEERING DIVISION SHALL FIELD LOCATE WATER VALVES ONE TIME DURING CONSTRUCTION WHEN REQUESTED BY THE CONTRACTOR. IT SHALL BE THE CONTRACTOR'S RESPONSIBILITY TO PRESERVE SUCH FIELD LOCATIONS DURING THE CONSTRUCTION PROCESS. WATER VALVES, VALVE BOXES OR FIRE HYDRANTS DAMAGED DURING CONSTRUCTION SHALL BE REPAIRED BY CONTRACTOR AT HIS OWN EXPENSE. VALVE BOXES AND WATER METERS WITHIN THE PROJECT LIMITS SHALL BE ADJUSTED TO MATCH FIELD GRADES BY THE CONTRACTOR.
- IF TRAFFIC WILL BE IMPACTED BY CONSTRUCTION, A TRAFFIC CONTROL PLAN MUST BE SUBMITTED AND APPROVED BY THE CITY TRAFFIC ENGINEER, BRIAN COON AT [traffic@wichita.gov](mailto:traffic@wichita.gov) BEFORE CONSTRUCTION CAN BEGIN. THE CONTRACTOR SHALL BE RESPONSIBLE FOR ALL TRAFFIC CONTROL MEASURES TO FACILITATE CONSTRUCTION. ALL CONSTRUCTION ZONE MARKINGS AND SIGNAGE SHALL CONFORM TO THE LATEST VERSION OF THE MANUAL ON UNIFORM TRAFFIC CONTROL DEVICES (MUTCD) AS PUBLISHED BY THE US DEPT. OF TRANSPORTATION, FEDERAL HIGHWAY ADMINISTRATION. ALL COSTS ASSOCIATED WITH CONSTRUCTION MARKINGS AND SIGNAGE SHALL BE THE CONTRACTOR'S RESPONSIBILITY.
- ALL AREAS DISTURBED DURING CONSTRUCTION THAT WILL NOT BE UNDER PROPOSED PAVEMENT SHALL BE SEEDED AND MULCHED. COST SHALL BE CONSIDERED SUBSIDIARY TO PROJECT SEEDING.
- CONTRACTOR SHALL LIMIT THE EXTENT OF TRENCH OPEN OVERNIGHT AND WEEKENDS TO LESS THAN 50 FEET.
- EXISTING UTILITIES AND THEIR LOCATION, AS SHOWN ON THE PLANS REPRESENT THE BEST INFORMATION OBTAINABLE FOR DESIGN. LOCATION INFORMATION HAS BEEN OBTAINED FROM THE VARIOUS COMPANIES AND IS EITHER FROM COMPANY UTILITY DRAWINGS OR COMPANY PROVIDED FIELD LOCATIONS. THE PLAN LOCATIONS SHOWN ARE NOT GUARANTEED. ADDITIONAL EXISTING UTILITIES MAY ALSO BE ENCOUNTERED.
- A PORTION OF EXCESS EXCAVATED MATERIAL SHALL BE MOUNDED AROUND MANHOLES WHICH EXTEND MORE THAN ONE (1) FOOT ABOVE THE EXISTING GROUND. SUCH MOUND SHALL BE CONSTRUCTED WITH NEW DEVELOPMENT A SIX (6) FOOT DIAMETER FLAT TOP WITH 4 TO 1 SIDE SLOPES DOWN TO THE ORIGINAL GROUND. THE ELEVATION OF THE FLAT TOP OF THE MOUND SHALL BE 0.4 FOOT BELOW THE TOP OF THE MANHOLE.
- CONTRACTOR SHALL PROVIDE POSITIVE DRAINAGE AWAY FROM ALL MANHOLE COVERS.
- ALL STUBS AND PLUGGED PIPES SHALL BE LOCATED WITH GREEN PLASTIC TAPE IN THE SAME MANNER AS RISERS.
- CONNECTING TO EXISTING MANHOLES:  
 PRIOR TO LAYING SEWER LINES USING EXISTING STUBS IN EXISTING MANHOLES, THE CONTRACTOR SHALL EXPOSE AND VERIFY THE ELEVATION, GRADE AND ALIGNMENT OF EXISTING STUBS AND NOTIFY THE ENGINEER OF ANY DEVIATION FROM THE PLANS. WHERE CONNECTION TO AN EXISTING MANHOLE THAT DOES NOT HAVE AN EXISTING STUB OR THE STUB IS UNUSABLE DUE TO ELEVATION GRADE OR ALIGNMENT, THE CONTRACTOR SHALL BORE CUT INTO EXISTING MANHOLE WALL TO MAKE CONNECTION USING APPROVED WATER STOP GASKET, AND RESHAPE THE EXISTING MANHOLE INVERT TO PROVIDE SMOOTH FLOW. THE COST TO CONNECTING TO EXISTING MANHOLES IS INCIDENTAL TO THE PROJECT.
- THE CONTRACTOR SHALL PREVENT ANY CONSTRUCTION DEBRIS FROM ENTERING THE EXISTING SANITARY SEWER DURING CONSTRUCTION.
- THE CONTRACTOR SHALL BE RESPONSIBLE FOR MAINTAINING CONTINUOUS FLOW OF SEWAGE THROUGH CONSTRUCTION. CONTRACTOR'S PROPOSED METHOD FOR MAINTAINING SEWAGE FLOW MUST BE SUBMITTED AND APPROVED BY THE SEWER MAINTENANCE DIVISION (316-268-4073) PRIOR TO STARTING AND BY-PASSING OF SEWAGE FLOWS.
- ALL TRAFFIC CONTROL DEVICES IN THE WORK ZONE (INCLUDING MARKINGS AND SIGNS) AND THEIR INSTALLATION AND MAINTENANCE SHALL COMPLY WITH THE LATEST EDITION OF THE MANUAL ON UNIFORM TRAFFIC CONTROL DEVICES (MUTCD). ALL TRAFFIC CONTROL DEVICES IN THE TRAVELED WAY OR CLEAR ZONE SHALL BE CRASHWORTHY (NCHRP REPORT 350 OR MASH COMPLIANT).  
<http://safety.ftwa.dot.gov/roadwaydept/policy/guide/road/hardware/wzd>
- ALL CONSTRUCTION EQUIPMENT, INCLUDING VEHICLES, MATERIALS, AND DEBRIS, SHALL BE STORED OUTSIDE OF THE CLEAR ZONE. WHERE THIS CANNOT BE ACHIEVED THE CONTRACTOR SHALL PLACE APPROPRIATE SIGNS, SUBJECT IDENTIFIERS, AND/OR BARRICADES IN COMPLIANCE WITH MUTCD.
- EXCEPT WHEN REQUIRED FOR SAFETY, TRAFFIC CONTROL SHALL NOT BLOCK ANY LANES OR SIDEWALKS WHEN WORK IS NOT BEING PERFORMED.
- FOLLOW THE LINK BELOW FOR DETAILS ON SPECIFIC CITY OF WICHITA STANDARD DETAILS:  
<http://www.wichita.gov/PWU/Pages/Regulations.aspx>
- DEVELOPER FOR THIS PROJECT IS:  
 TIER 1, LLC, A KANSAS LIMITED LIABILITY COMPANY  
 7926 W. 21ST STREET  
 WICHITA, KANSAS, 67205  
 MARV L. SCHELLENBERG, MANAGING MEMBER  
 316-721-2153

## SANITARY SEWER

TO SERVE

# BAY COUNTRY ADDITION (PHASE 3)

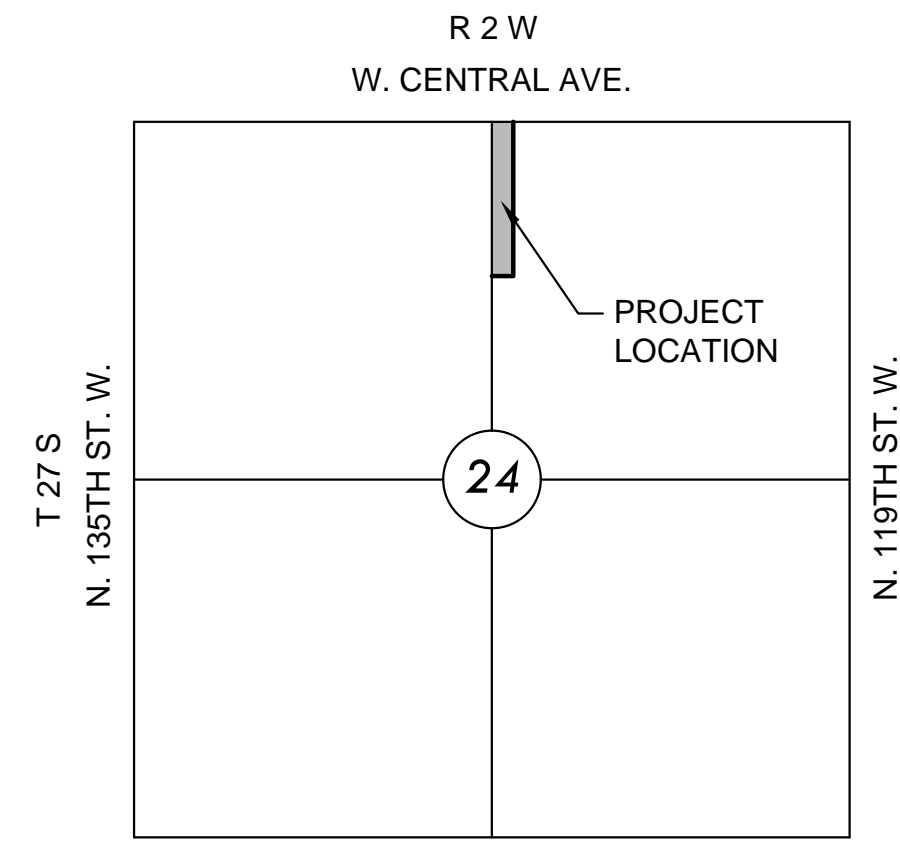
## LATERAL 46, MAIN 1, CIS

WHEATLAND AVE.  
 WICHITA, KS 67235

## PROJECT NO. 468-85374

THE CITY OF WICHITA, KANSAS  
 GARY JANZEN, P.E. - CITY ENGINEER  
 OCA NO. 744485

Dutton Construction - Contractor  
 B. Woods - City of Wichita, Field Project Engineer  
 S. Stripling - City of Wichita, Inspector  
 As-built  
 Release Date: 5/14/2019  
 Completion Date:  
 pdf: apr 5/15/2019

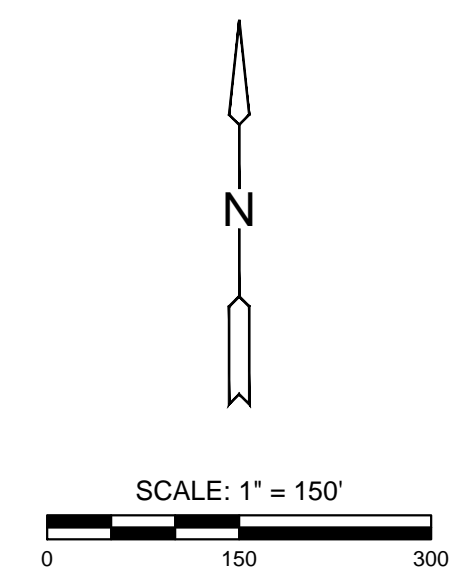


### VICINITY MAP

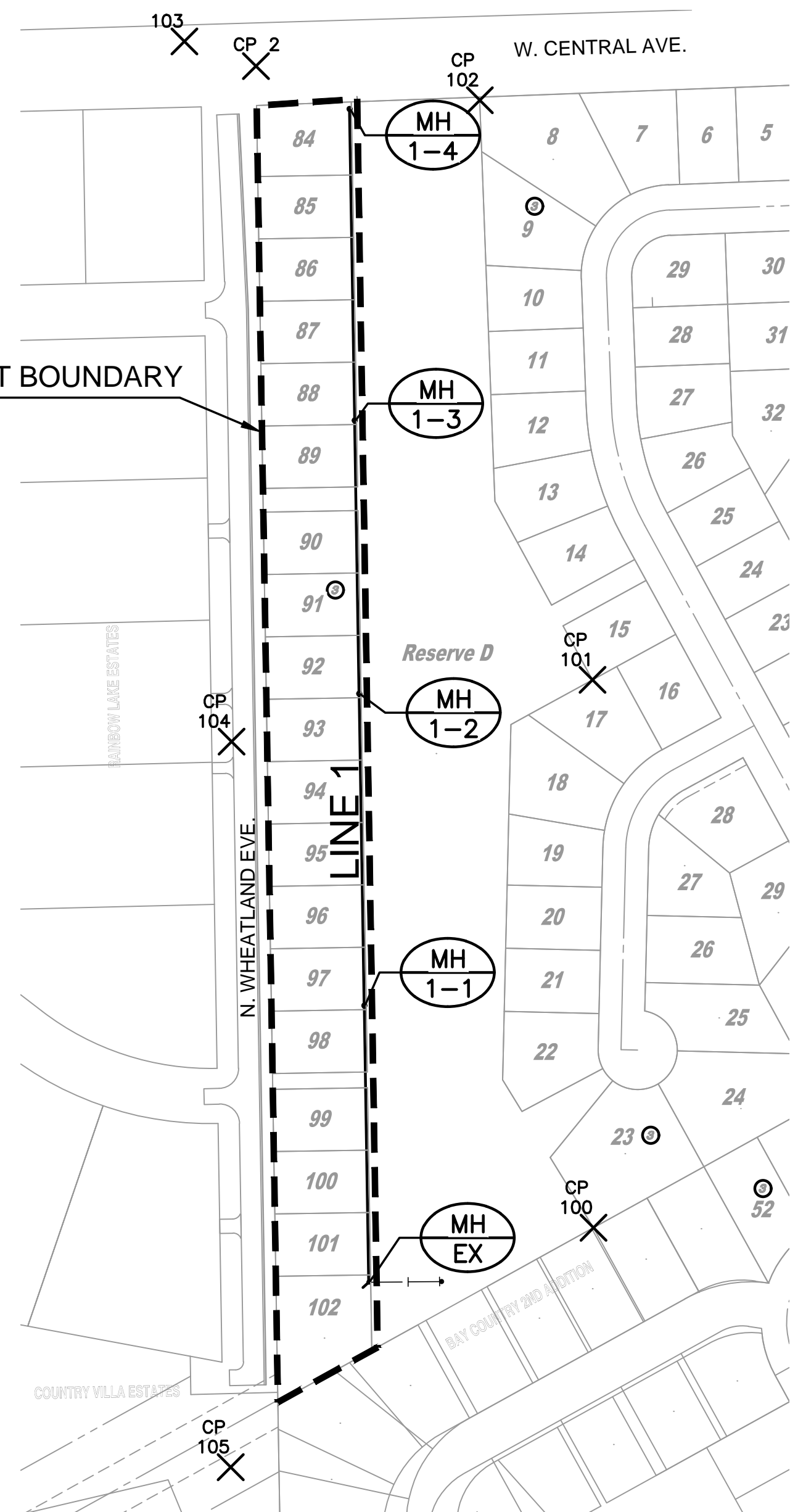
No Scale

### INDEX TO DRAWINGS

SHEET NO.	DESCRIPTION
1	TITLE SHEET
2-3	DETAILS
4-5	LINE 1
6	BUBBLE MAP
7-11	BMP SHEETS
12	FINAL PLAT



### BENEFIT DISTRICT BOUNDARY



### BENCHMARKS

#### DATUM:

1) THE PROJECT HORIZONTAL DATUM IS BASED ON PREVIOUSLY ESTABLISHED PROJECT DATA. VALUES ARE NOT STATE PLANE.

2) THE VERTICAL DATUM USED IS NAVD88.

#### CONTROL:

PT. NO.	NORTH	EAST	ELEV.	DESCRIPTION
1	1689038.461	1607457.140	1344.611	SECTION CORNER 5/8" SOLID BAR IN THIMBLE
2	1687940.640	1604863.603	1341.582	SECTION CORNER 1/2" PIPE IN THIMBLE
100	1686469.306	1605291.171	1336.83	5/8" REBAR W/ MKEC CLS 39 ID CAP
101	1687163.130	1605289.999	1339.76	5/8" REBAR W/ MKEC CLS 39 ID CAP
102	1687897.274	1605147.125	1340.84	1/2" REBAR W/ MKEC WITNESS ID CAP
103	1687971.755	1604772.960	1342.00	BM CHISELED "X" ON CHISELED SQUARE
104	1687085.247	1604832.791	1339.21	5/8" REBAR W/ 2" ALUMINUM MKEC CONTROL
PT. ID CAP	1686166.413	1604831.622	1339.61	5/8" REBAR W/ 2" ALUMINUM MKEC CONTROL

BM 1 - CHISELED SQUARE ON FRONT CENTER INLET BETWEEN LOTS 22 AND 23, BLK 3  
 ELEVATION = 1340.64 (NAVD 88)

BM 103 - CHISELED SQUARE AND "X" ON THE NORTHEAST CORNER OF THE CURB INLET ON THE NORTH SIDE OF CENTRAL, WEST OF WHEATLAND AVE  
 ELEVATION = 1342.00 (NAVD 88)

#### UTILITIES:

THE UNDERGROUND UTILITIES SHOWN HEREON WERE MARKED IN THE FIELD BY THE UTILITY OWNERS IN RESPONSE TO KANSAS ONE CALL TICKET NUMBERS: 18464831, 18464850, 18464859, AND 18464880. THE SURVEYOR MAKES NO GUARANTEE THAT THE UNDERGROUND UTILITIES SHOWN COMPRISE ALL SUCH UTILITIES IN THE AREA, EITHER IN SERVICE OR ABANDONED. THE SURVEYOR FURTHER DOES NOT WARRANT THAT THE UNDERGROUND UTILITIES SHOWN ARE IN THE EXACT LOCATION INDICATED ALTHOUGH HE DOES CERTIFY THAT THEY ARE LOCATED AS ACCURATELY AS POSSIBLE FROM INFORMATION AVAILABLE. THE SURVEYOR HAS NOT PHYSICALLY LOCATED THE UNDERGROUND UTILITIES.



SANITARY SEWER PLANS FOR  
**BAY COUNTRY ADDITION (PHASE 3)**  
 WICHITA, KANSAS

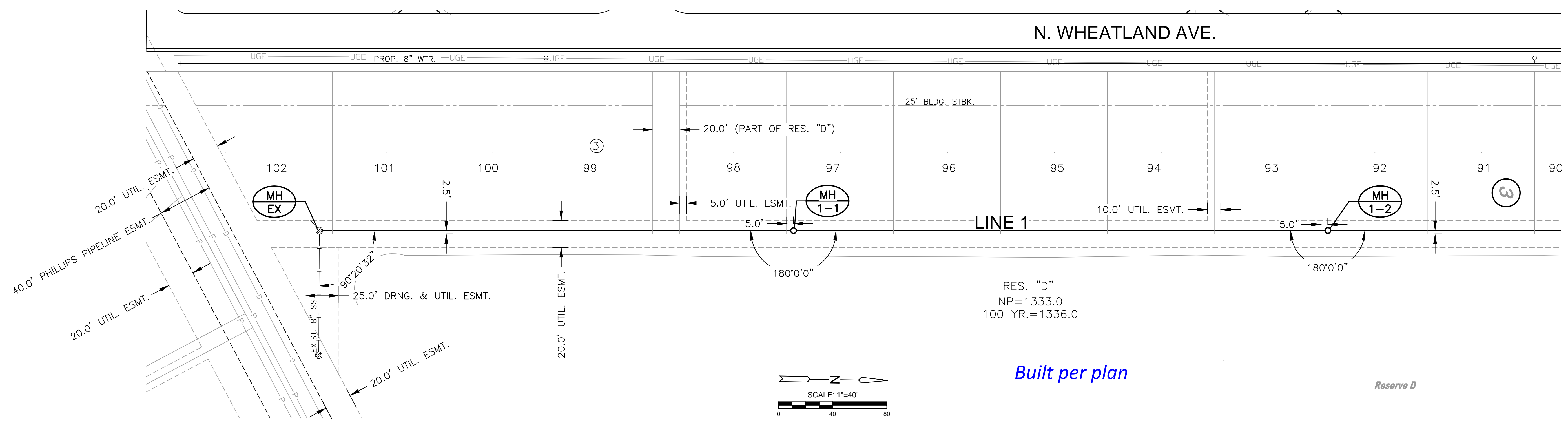
©2018  
 MKEC Engineering  
 All Rights Reserved  
 www.mkec.com  
 These drawings and their contents, including, but not limited to, all concepts, designs, & ideas are the exclusive property of MKEC Engineering (MKEC), and may not be used or reproduced in any way without the express consent of MKEC.

### TITLE SHEET

PROJECT NO.	468-85374	
DATE	DEC. 2018	
SCALE	1" = 150'	
DESIGNED	GJA	
DRAWN	CRM	
CHECKED	GJA	
NO.	REVISION	DATE
SHEET NO.		
1 OF 12		

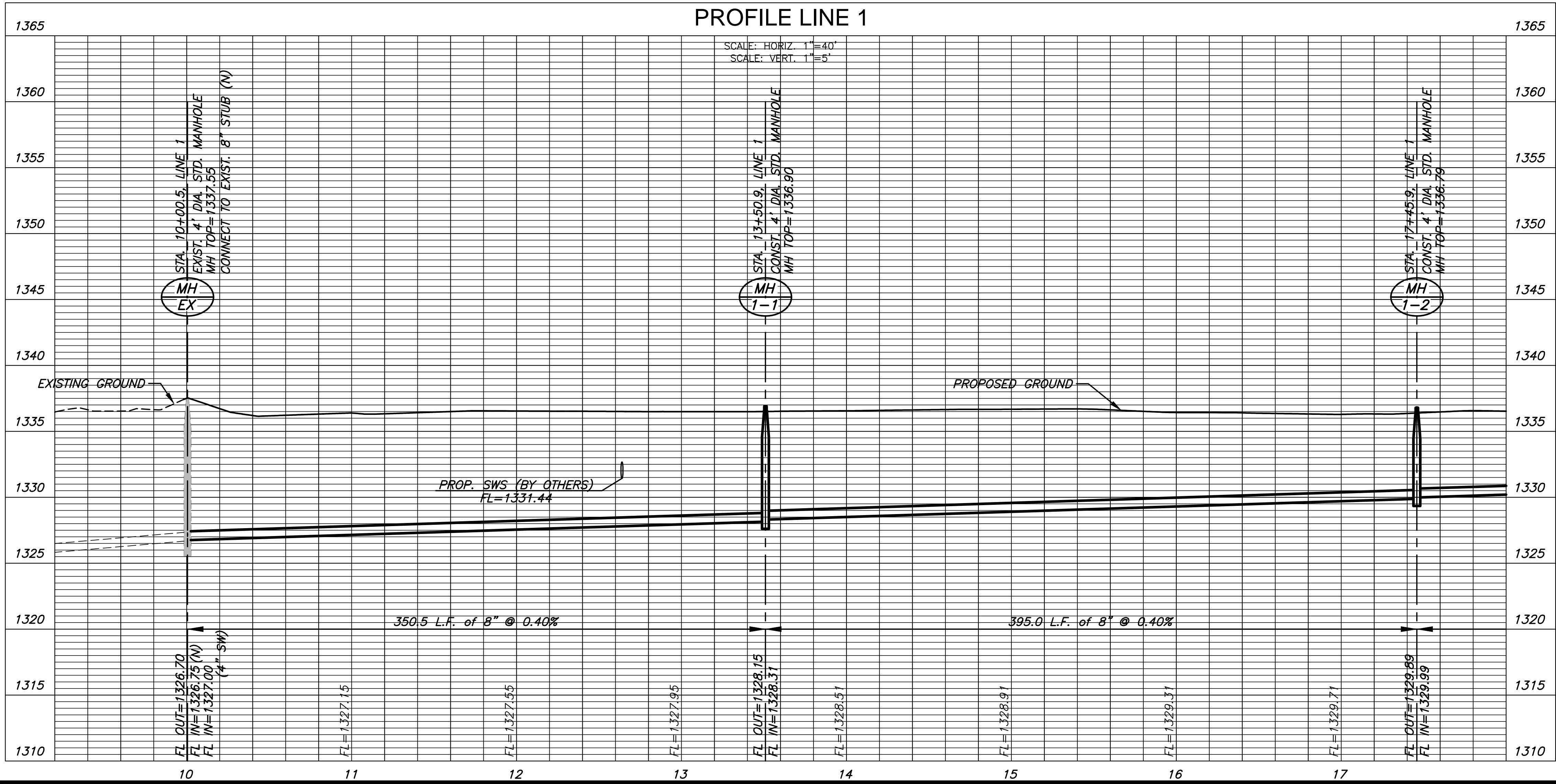
PLOTTED: Wednesday, December 05, 2018 @ 09:15AM

J:\PROJECTS\2018\1301010385\_COW BAY COUNTRY DEVELOPMENT\5-CIVIL\CAD\SANPHASE 3\13886\_05\_2200.DWG



NOTE:  
CONTRACTOR TO VERIFY THE  
DEPTH AND LOCATION OF EXISTING  
UTILITIES PRIOR TO CONSTRUCTION.

PLAN LINE 1  
PROFILE LINE 1



SANITARY SEWER PLANS FOR  
**BAY COUNTRY ADDITION (PHASE 3)**  
WICHITA, KANSAS

©2018  
MKEC Engineering  
All Rights Reserved  
www.mkec.com  
These drawings and their contents, including, but not limited to, all concepts, designs, & ideas are the exclusive property of MKEC Engineering (MKEC), and may not be used or reproduced in any way without the express consent of MKEC.

PLAN AND  
PROFILE LINE 1

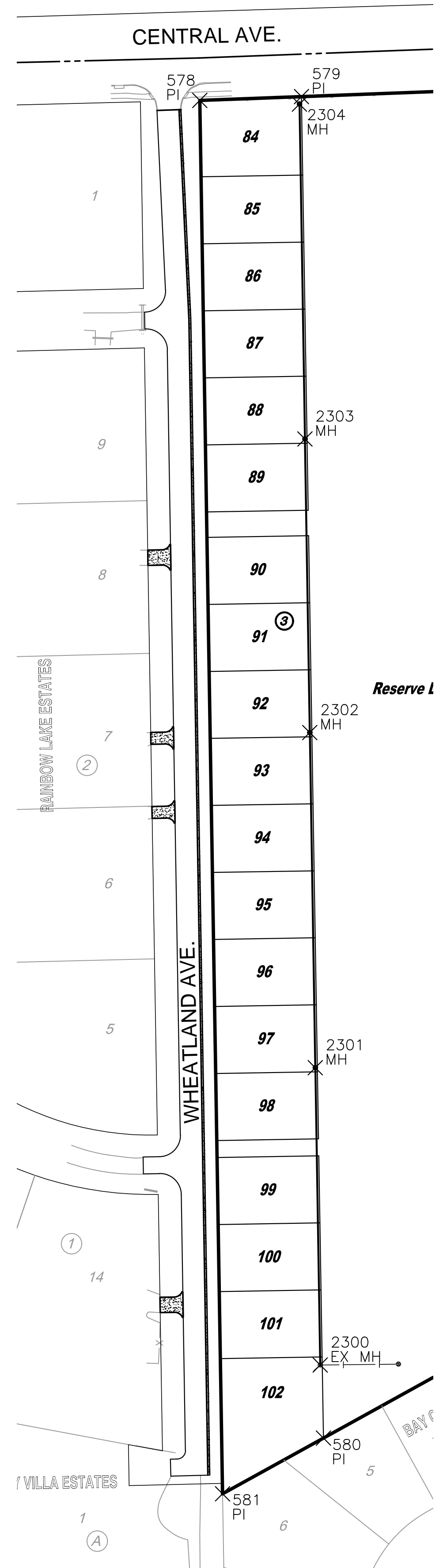
PROJECT NO.	468-85374
DATE	DEC. 2018
SCALE	1"=40'
DESIGNED	GJA
DRAWN	CRM
CHECKED	GJA

NO.	REVISION	DATE



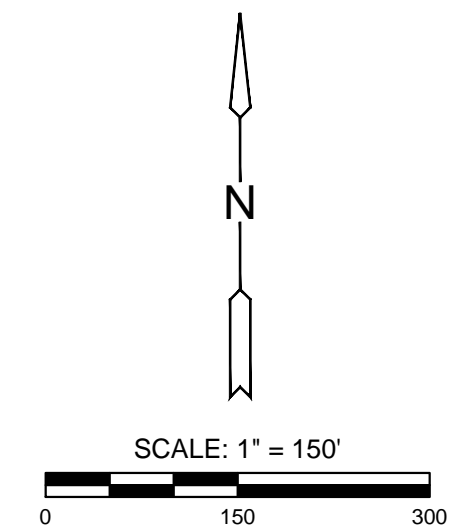
PLOTTED: Wednesday, December 05, 2018 @ 09:36AM

J:\PROJECTS\2018\1301010385\_COW BAY COUNTRY DEVELOPMENT\5-CIVIL\CAD\SAN\PHASE 3\1385\_05\_2500.DWG



PLAT POINTS			
Point #	Northing	Easting	Desc.
578	1687890.59	1604864.44	PI
579	1687895.11	1604984.38	PI
580	1686314.15	1605010.33	PI
581	1686248.40	1604891.39	PI

SANITARY POINTS			
Point #	Northing	Easting	Desc.
2300	1686400.27	1605006.46	EX MH
2301	1686750.67	1605000.70	MH
2302	1687145.62	1604994.21	MH
2303	1687491.57	1604988.52	MH
2304	1687886.16	1604982.04	MH



EVERY ATTEMPT HAS BEEN MADE TO INSURE ALL COORDINATE VALUES SHOWN ARE AN ACCURATE AND TRUE REPRESENTATION OF THE CURRENT PLANS. ALL VALUES ARE TO BE CONFIRMED WITH THE FINAL SIGNED PLAN SET BEFORE USE.



SANITARY SEWER PLANS FOR  
**BAY COUNTRY ADDITION (PHASE 3)**  
 WICHITA, KANSAS

©2018 MKEC Engineering All Rights Reserved www.mkec.com  
 These drawings and their contents, including, but not limited to, all concepts, designs, & ideas are the exclusive property of MKEC Engineering (MKEC), and may not be used or reproduced in any way without the express consent of MKEC.

**BUBBLE MAP**

PROJECT NO.	468-85374	
DATE	DEC. 2018	
SCALE	1"=100'	
DESIGNED	DRAWN	CHECKED
GJA	CRM	GJA

NO.	REVISION	DATE

SHEET NO.  
**6 OF 12**

# BAY COUNTRY

AN ADDITION TO WICHITA, SEDGWICK COUNTY, KANSAS



N.E. Cor. N.E. 1/4  
Sec. 24, T27S, R2W  
of the 6th P.M.

N.W. Cor. N.E. 1/4  
Sec. 24, T27S, R2W  
of the 6th P.M.

SCALE: 1" = 100'

○ = IRON SET  
C.A.C. = COMPLETE ACCESS CONTROL  
B.S.L. = BUILDING SETBACK LINE  
S.S. ESM.T. = SANITARY SEWER EASEMENT  
B.W. = DISK 46' EAST AND 46' SOUTH  
OF INTERSECTION AT C OF CENTRAL  
WITH C OF 119TH STREET WEST  
CITY DATUM ELEV.=156.93

Block 1:  
LOTS 20 THROUGH 40 INCLUSIVE: 1340.0 (W.S.L.)=152.6 (C.O.W.)  
LOTS 41 THROUGH 46 INCLUSIVE: 1338.0 (W.S.L.)=150.6 (C.O.W.)

Block 3:  
LOTS 8 THROUGH 18 INCLUSIVE: 1338.0 (W.S.L.)=150.6 (C.O.W.)  
LOTS 19 THROUGH 23 INCLUSIVE: 1336.0 (W.S.L.)=148.6 (C.O.W.)  
LOTS 24 THROUGH 30 INCLUSIVE: 1336.0 (W.S.L.)=148.6 (C.O.W.)  
LOTS 31 THROUGH 39 INCLUSIVE: 1328.0 (W.S.L.)=148.6 (C.O.W.)  
LOTS 40 THROUGH 46 INCLUSIVE: 1338.0 (W.S.L.)=150.6 (C.O.W.)

Block 5:  
LOTS 6 THROUGH 39 INCLUSIVE: 1336.0 (W.S.L.)=148.6 (C.O.W.)

LIBRARY COPY  
REGISTRAR OF DEEDS  
SEDGWICK COUNTY, KANSAS  
LARRY CONSOLATOR