

SANITARY SEWER EXTENSION

to serve

Casa Bella 2nd - Phase 5 CITY OF WICHITA, KANSAS

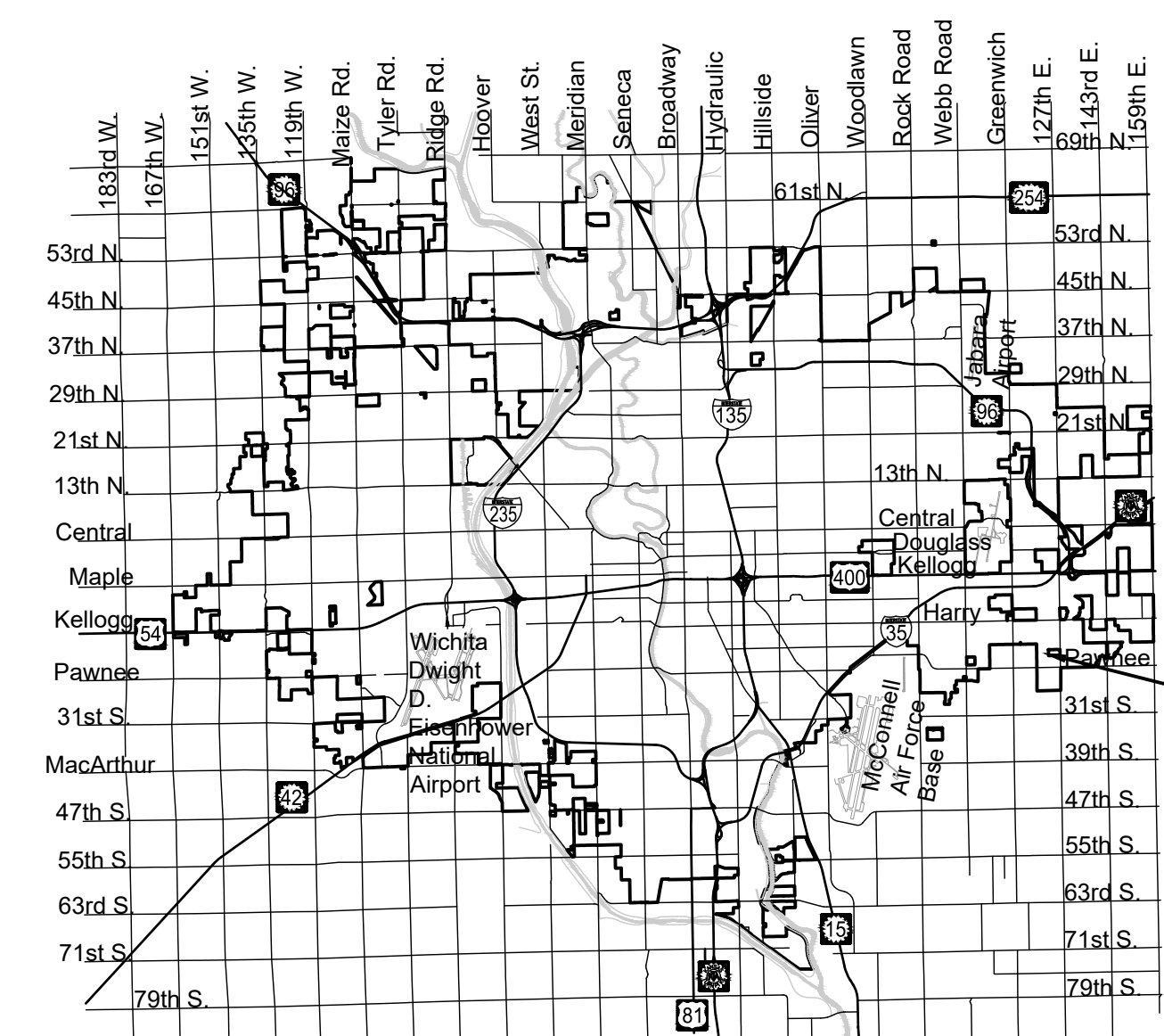
Gary Janzen, P.E. City Engineer

Project Number 468-85336

O.C.A. NO. 744478

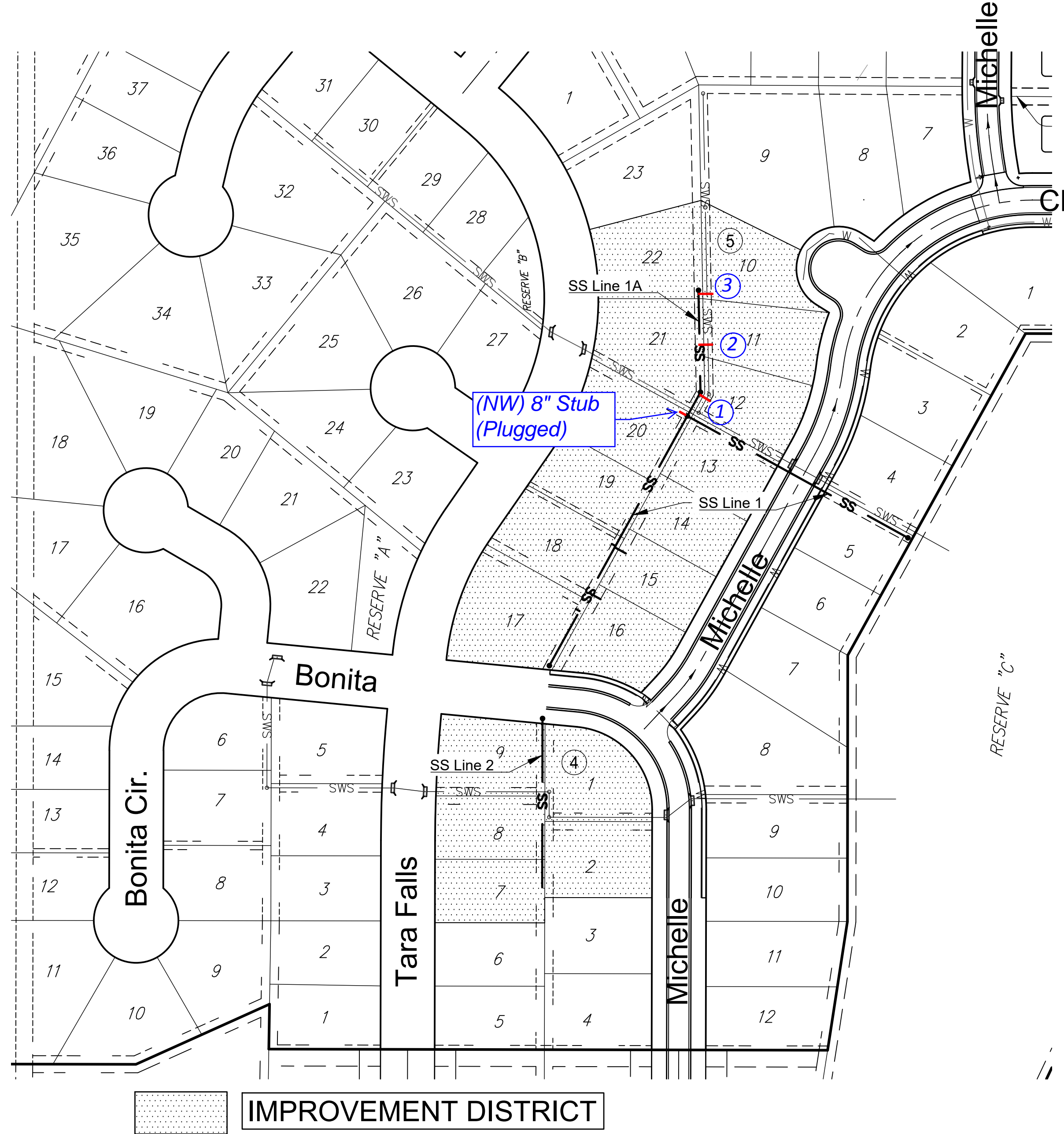
Lateral 15, Main 18, Four Mile Creek

McCullough Excavation - Contractor
K. Yale - City of Wichita, Field Project Engineer
J. Smith - City of Wichita, Inspector
 As-built
 Risers
 Release Date: 7/18/2019 (Release date for connection purposes only)
 Completion Date: 2/14/2020
 pdf: 7/19/2019 apr



PROJECT LOCATION

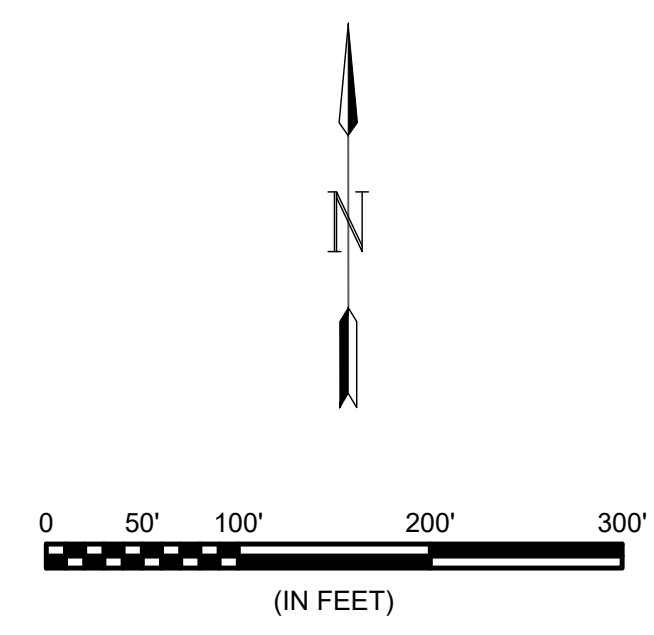
Vicinity Map



Cherry Creek

Sheet Index

Sheet	Title
1	SS Titlesheet
2	SS Line 1
3	SS Line 1A & 2
4	Pre-Cast SS MH
5	MH Frame & Cover
6	Vertical Riser
7	Erosion Control SS
8	BOC
9	Silt Fc
10	Straw Bale
11	SIP
12	SDP
13	SS Coordinates
14	Addition Coordinates-SS
15	Casa Bella 2nd Plat



August 2018

PLANS PREPARED BY



GENERAL NOTES:

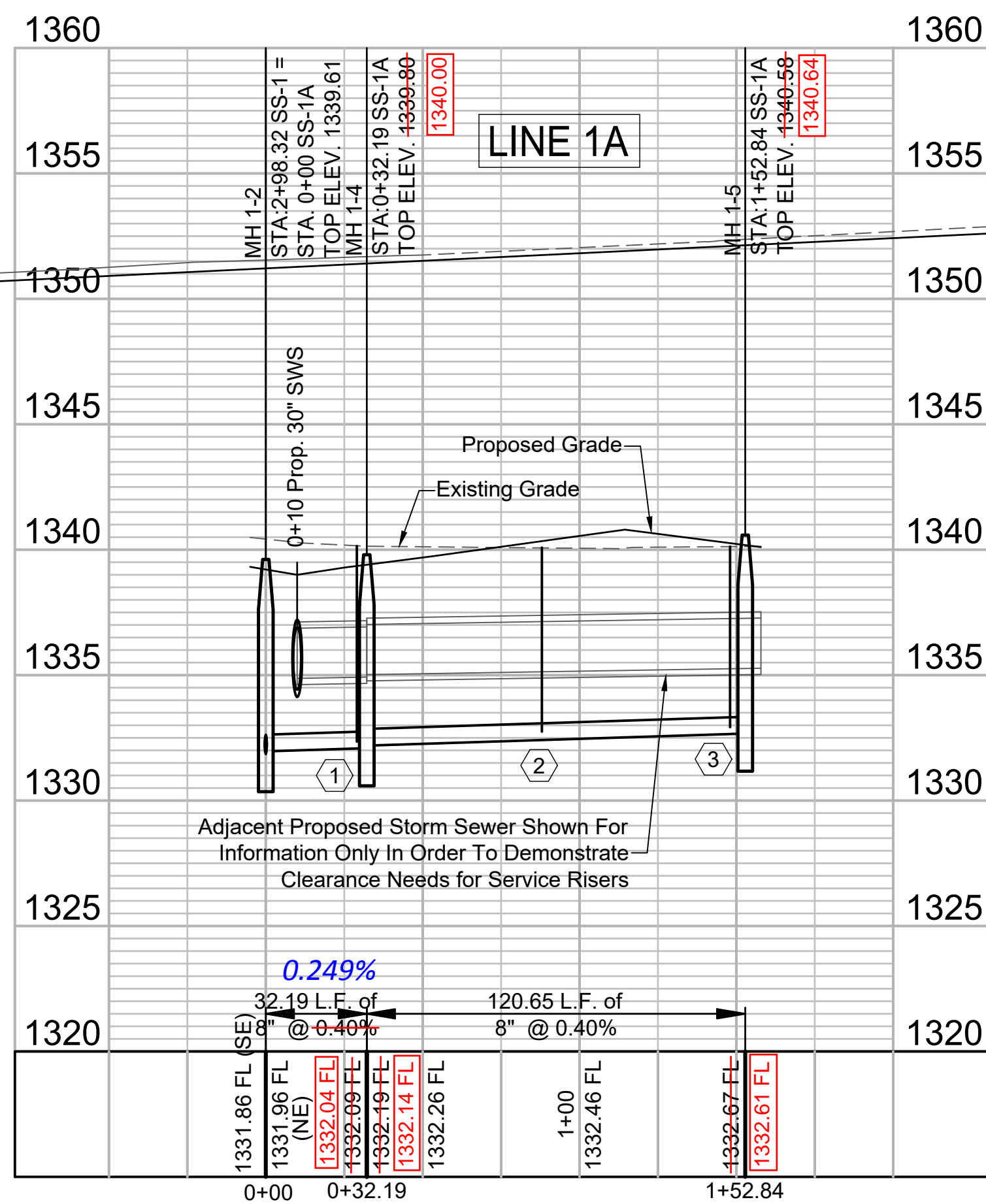
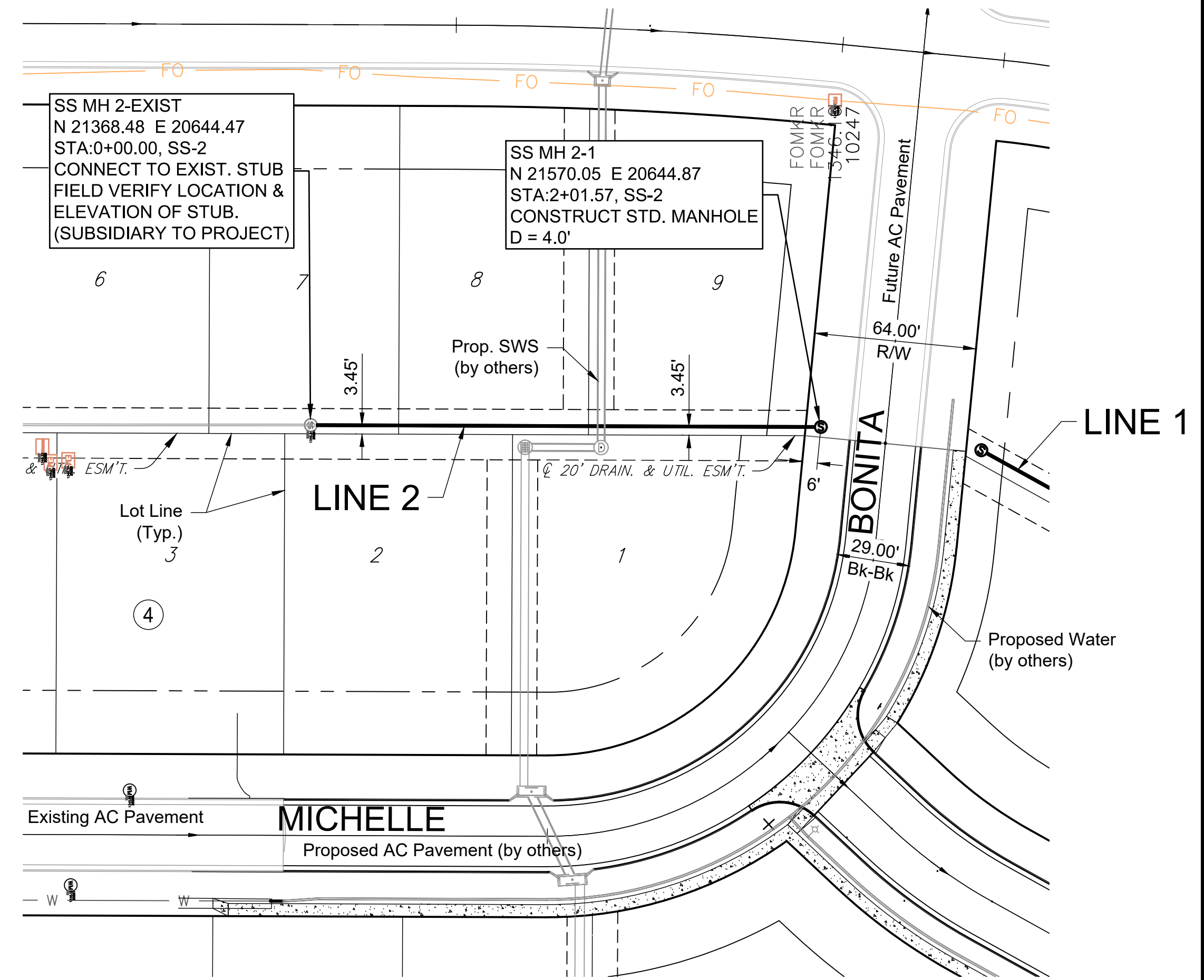
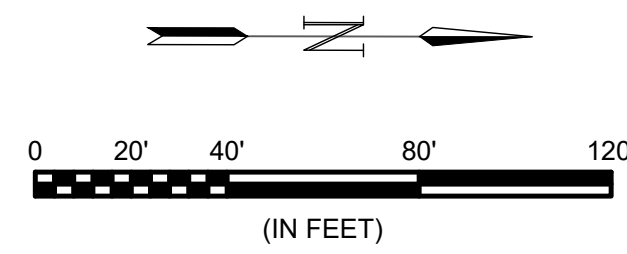
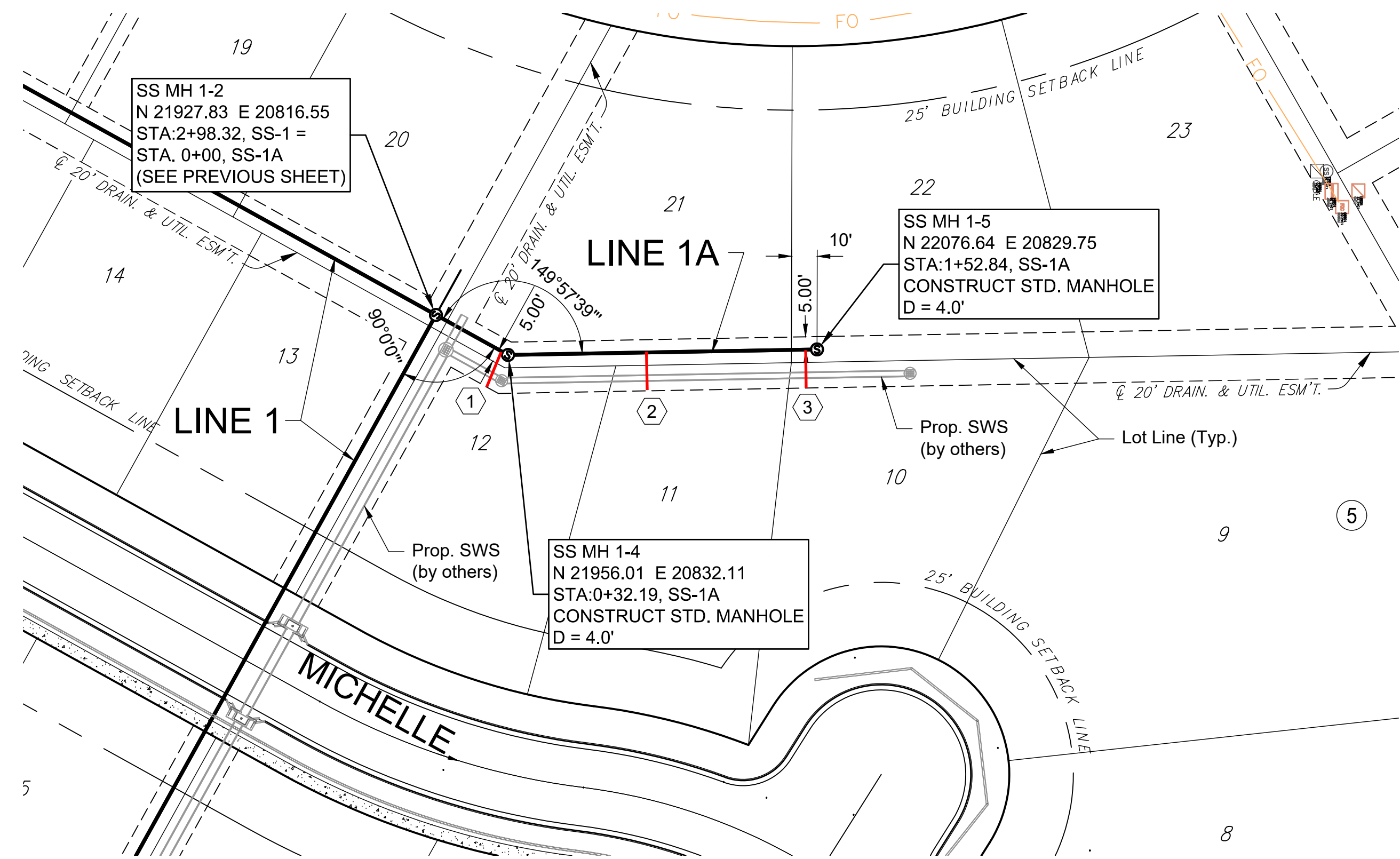
- The Contractor shall comply with all applicable safety regulations. All construction shall be completed following current City Standard Specifications and Special Provisions.
- Contractor will be required to provide notice to utility companies a minimum of seventy-two (72) hours prior to any excavation, as follows:
 Kansas One-Call 687-2470
 The Contractor must notify the following in case of an emergency:
 AT&T 1-800-246-8464
 Black Hills Energy 1-800-694-8989
 Butler Rural Electric 1-316-321-9600
 City of Wichita Water & Sewer Dept. 1-316-219-8921
 City of Wichita Stormwater 1-316-268-4090
 City of Wichita Traffic 1-316-268-4034
 Cox Communications 1-888-249-3530
 Kansas Gas Service 1-888-482-4950
 Westar Energy 1-800-544-4857
- Utility service lines, poles, etc. are to be adjusted as necessary by others prior to construction unless the plans specifically call for their adjustment by the Contractor or unless the plans specifically identify a utility to be adjusted by its owner during construction. Existing utilities and their location, as shown on the plans, represent the best information obtainable for design. The Contractor will be required to work around existing utilities within the right-of-way which do not conflict with proposed construction.
- Rubble from the removal of miscellaneous structures and excess excavation which is to be wasted shall be disposed of on sites to be provided by the Contractor. These sites shall be approved by the Engineer as to suitability, appearance and site location. Locations, in the opinion of the Engineer, that will leave an unsightly appearance will not be approved. All disposal sites must be approved by the Kansas Department of Health and Environment. Material either stockpiled or disposed of in a flood plain will require a Kansas State Board of Agriculture permit. Any material dumped in waters of the United States or wetlands is subject to U.S. Corps. of Engineers permitting regulations. Any material buried or stockpiled beyond approved construction limits will require additional archaeological investigations unless buried in a previously approved borrow location.
- Trees and shrubs in public right-of-way which are in direct conflict with proposed new construction shall be removed by the Contractor with the Engineer's approval. Trees and shrubs which are not in direct conflict with proposed new construction shall be saved and protected from damage.
- The Contractor shall give all property owners and/or tenants of developed property abutting the construction of this project a minimum of ten (10) days notice prior to start of construction.
- The Contractor shall be responsible for preserving property irons. The Contractor will be required to re-establish any property irons which are damaged or destroyed by his construction operations. Such irons shall be re-established by a licensed land surveyor in accordance with state laws.
- If traffic will be impacted by construction, a traffic control plan must be submitted and approved by the City Traffic Engineer, Brian Coon at traffic@wichita.gov before construction can begin. The Contractor shall be responsible for all traffic control measures to facilitate construction. All construction zone markings and signage shall conform to the latest version of the Manual on Uniform Traffic Control Devices (MUTCD) as published by the US Dept. of Transportation, Federal Highway Administration. All costs associated with construction markings and signage shall be the Contractors responsibly.
- All elevations shown are NAVD 88.
- All areas disturbed during construction that will not be under proposed pavement shall be restored to match existing conditions.
- The Contractor shall protect from damage and support existing utilities through constructions as approved by the utility owner and the Engineer at the contractors expense.
- Contractor shall limit the extent of trench openings overnight and weekends to less than 50 feet.
- Any sidewalk, drive approach, curb, or street pavement removed to construct project must have a pavement cut permit and be replaced by the City contractor. Permits can be obtained by calling 316-268-4501 or 316-268-4480.
- All stubs and plugged pipes shall be located with green plastic tape in the same manner as risers.
- Connecting to Existing Manholes:
 Prior to laying sewer lines using existing stubs in existing manholes, the Contractor shall expose and verify the elevation, grade and alignment of existing stubs and notify the Engineer of any deviation from the plans. Where connection to an existing manhole that does not have an existing stub or the stub is unusable due to elevation grade or alignment, the Contractor shall bore cut into existing manhole wall to make connection using approved water stop gasket, and reshape the existing manhole invert to provide smooth flow. The cost to connecting to existing manholes is incidental to the project.
- Contractor shall provide positive drainage away from all manhole covers.
- The Contractor shall prevent any construction debris from entering the existing sanitary sewer during construction.
- The Contractor shall be responsible for maintaining continuous flow of sewage through construction. Contractors proposed method for maintaining sewage flow shall be submitted and approved by the Sewer Maintenance Division (316-268-4073) prior to starting and by-passing of sewage flows.
- Any over excavation from manhole and pipe removal shall be backfilled with AB-3 compacted to 90-95% ASTM D698.
- No shrink or swell factors have been applied to the earthwork quantities shown on this project. All earthwork quantities are based on raw surface volume comparisons.
- Excess dirt generated from installation of underground utilities is to remain on site and be stockpiled on Lots 1 & 9, Block 4.

Benchmarks

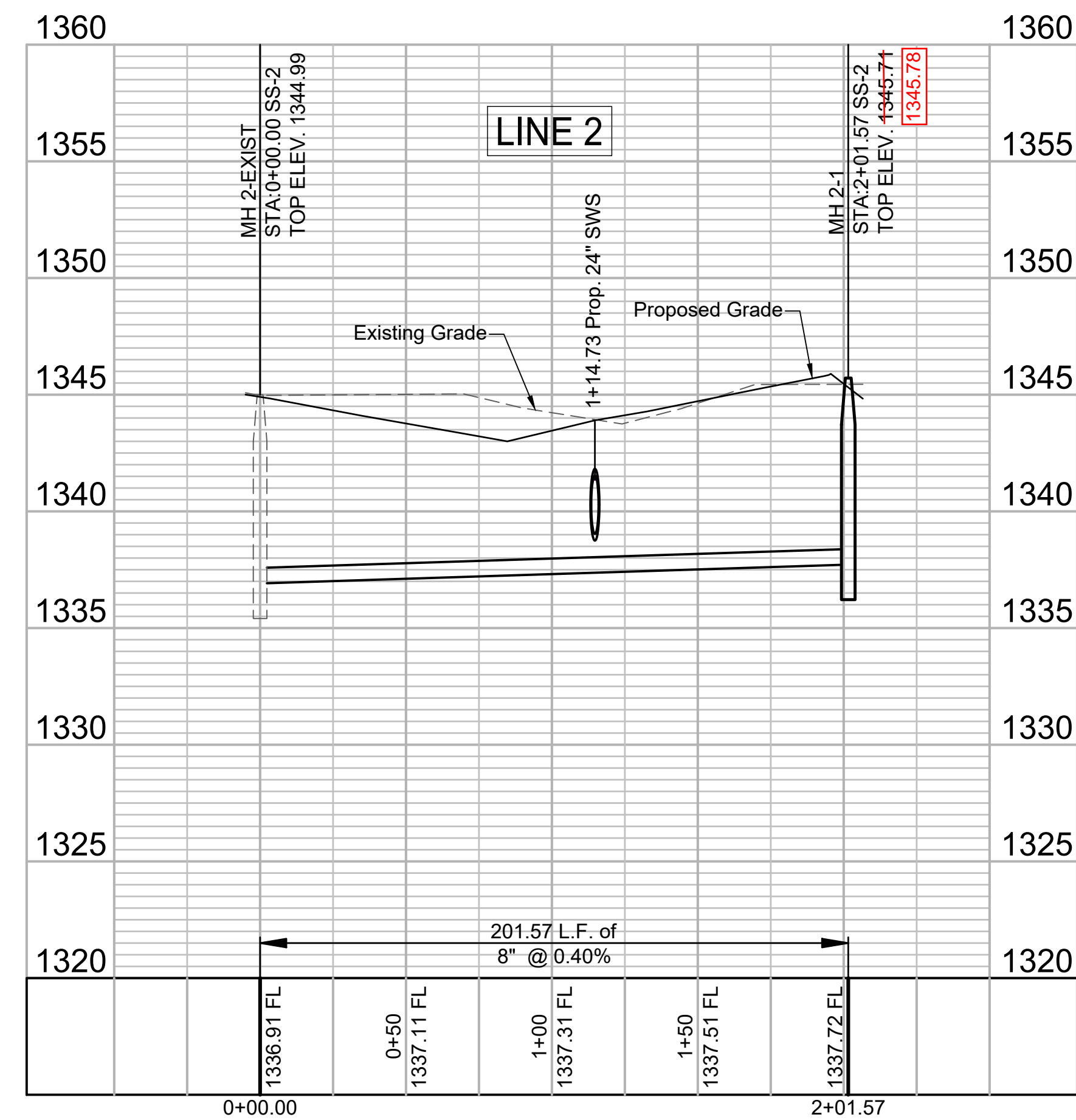
BENCHMARK #1
 CHISELED SQUARE ON THE TOP OF CURB ON N. SIDE OF CHERRY CREEK 210'± E. OF THE INTERSECTION OF MICHELLE & CHERRY CREEK, EAST SIDE OF INLET. ELEVATION = 1339.26 (NAVD88)


BENCHMARK #2
 RB BRASS DISC, EAST SIDE OF 127TH & MT. VERNON 55.45' E. & 5.13' S. OF THE NW COR. OF THE SW 1/4 OF SEC. 35, T27S, R2E. ELEVATION = 1348.80 (NAVD88)

SEWER SERVICE RISER TABLE								Distance from		
NUMBER	TYPE	SERVING			STATION/DIRECTION	FOR INFORMATION ONLY		Distance from Main to Riser (Lt./Rt.)	Upstream MH	Downstream MH
		LOT NO.	BLOCK NO.	LINE NO.		APPROX. LENGTH 4" PIPE				
						VERTICAL	HORIZONTAL			
1	8"X4" Tee	12	5	1A	0+29 Right	7.5	15.0	15' Rt.	3'	29'
2	8"X4" Tee	11	5	1A	0+88 Right	7.0	15.0	15' Rt.	45'	54'
3	8"X4" Tee	10	5	1A	1+48 Right	7.0	15.0	15' Rt.	5'	116'




- NOTES**
- Contractor to grade around manholes and cleanouts as shown on the detail on Sheet No. 2. Grading subsidiary to manholes and cleanouts.
 - Contractor to provide temporary grading around manholes to ensure no ponding or damming of water until site grading is completed.
 - Contractor to ensure service risers are not in conflict with any proposed storm sewer.






© 2018 GARVER, LLC
THIS DOCUMENT, ALONG WITH THE IDEAS AND DESIGNS CONVEYED HEREIN, SHALL BE CONSIDERED INSTRUMENTS OF PROFESSIONAL SERVICE AND ARE PROPERTY OF GARVER, LLC. ANY USE, REPRODUCTION, OR DISTRIBUTION OF THIS DOCUMENT, ALONG WITH THE IDEAS AND DESIGN CONTAINED HEREIN, IS PROHIBITED UNLESS AUTHORIZED IN WRITING BY GARVER, LLC OR EXPLICITLY ALLOWED IN THE GOVERNING PROFESSIONAL SERVICES AGREEMENT FOR THIS WORK.



Digitally Signed 08/20/2018

REV.	DATE	DESCRIPTION	BY



CITY OF WICHITA
WICHITA, KANSAS

CASA BELLA 2nd ADD.
PHASE 5 - SS

SS Line 1A & 2

JOB NO.: 18267011
DATE: AUG 2018
DESIGNED BY: MTD
DRAWN BY: DRS

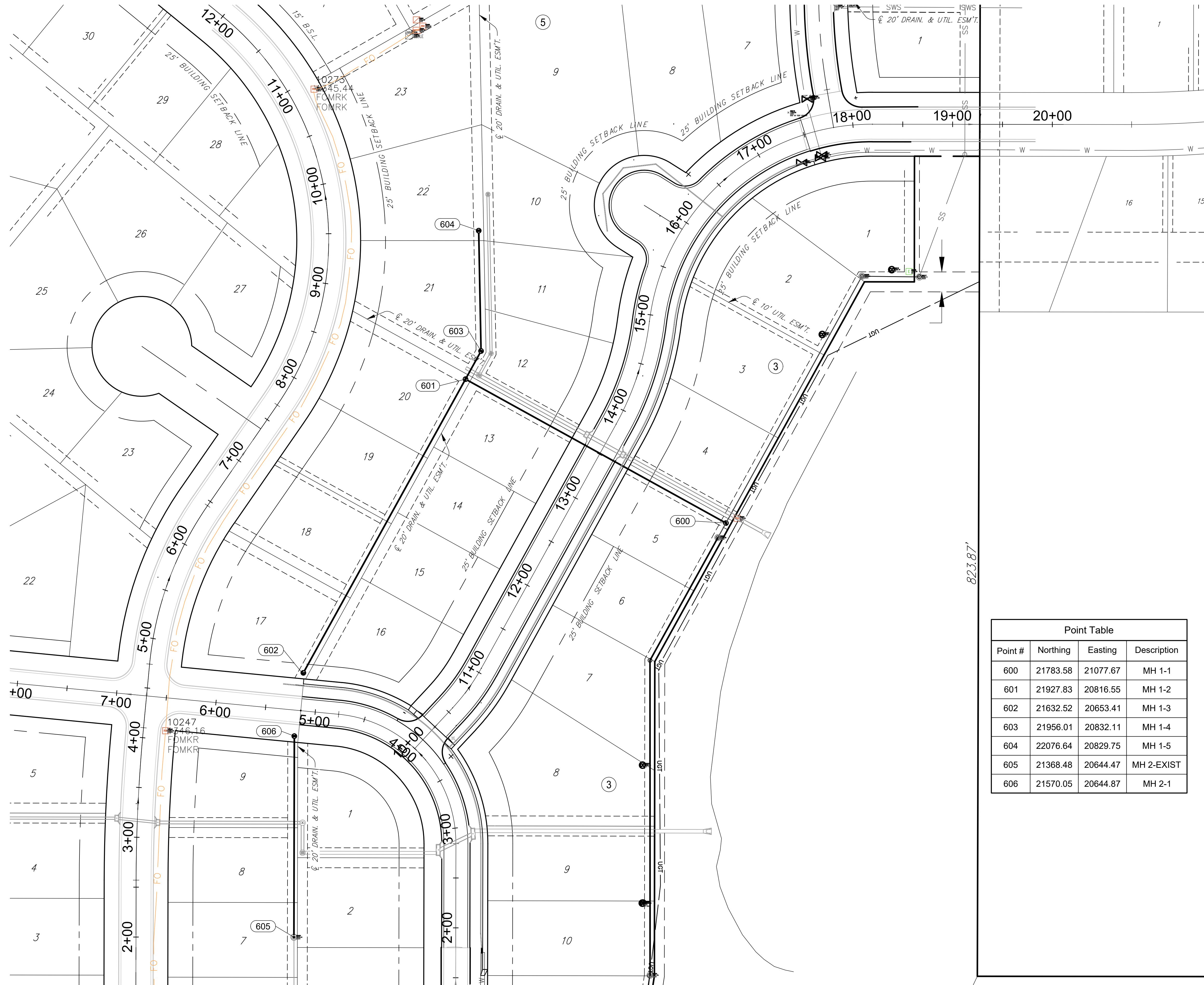
BAR IS ONE INCH ON ORIGINAL DRAWING
IF NOT ONE INCH ON THIS SHEET, ADJUST SCALES ACCORDINGLY.

DRAWING NUMBER

SHEET NUMBER **3** OF **15**

File: L:\2018\18267011 - Casa Bella Phase 5\Drawings\C3D\SS\SS LINE 1A-2.dwg Last Save: 8/15/2018 3:44 PM Last saved by: MTDolechek
 Last plotted by: Dolechek, Mark T. Plot Style: --- Plot Scale: 1:2.5849 Plot Date: 8/20/2018 4:00 PM Plotter used: None

File: L:\2018\18267011 - Casa Bella Phase 5\Drawings\C3D\18267011 Utility Coordinates.dwg Last Save: 8/17/2018 9:02 AM Last saved by: MTDolechek
 Last plotted by: Dolechek, Mark T. Plot Date: 8/20/2018 4:03 PM Plotter used: None



Point Table			
Point #	Northing	Easting	Description
600	21783.58	21077.67	MH 1-1
601	21927.83	20816.55	MH 1-2
602	21632.52	20653.41	MH 1-3
603	21956.01	20832.11	MH 1-4
604	22076.64	20829.75	MH 1-5
605	21368.48	20644.47	MH 2-EXIST
606	21570.05	20644.87	MH 2-1



© 2018 GARVER, LLC
 THIS DOCUMENT, ALONG WITH THE IDEAS AND DESIGNS CONVEYED HEREIN, SHALL BE CONSIDERED INSTRUMENTS OF PROFESSIONAL SERVICE AND ARE PROPERTY OF GARVER, LLC. ANY USE, REPRODUCTION, OR DISTRIBUTION OF THIS DOCUMENT, ALONG WITH THE IDEAS AND DESIGN CONTAINED HEREIN, IS PROHIBITED UNLESS AUTHORIZED IN WRITING BY GARVER, LLC OR EXPLICITLY ALLOWED IN THE GOVERNING PROFESSIONAL SERVICES AGREEMENT FOR THIS WORK.



Digitally Signed 08/20/2018

REV.	DATE	DESCRIPTION	BY



CITY OF WICHITA
 WICHITA, KANSAS
 CASA BELLA 2nd ADD.
 PHASE 5 - SS

SS Coordinates

JOB NO.: 18267011
 DATE: AUG 2018
 DESIGNED BY: MTD
 DRAWN BY: DRS

BAR IS ONE INCH ON ORIGINAL DRAWING
 0 1" IF NOT ONE INCH ON THIS SHEET, ADJUST SCALES ACCORDINGLY.

DRAWING NUMBER

CASA BELLA SECOND ADDITION

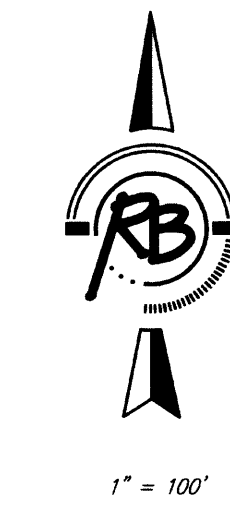
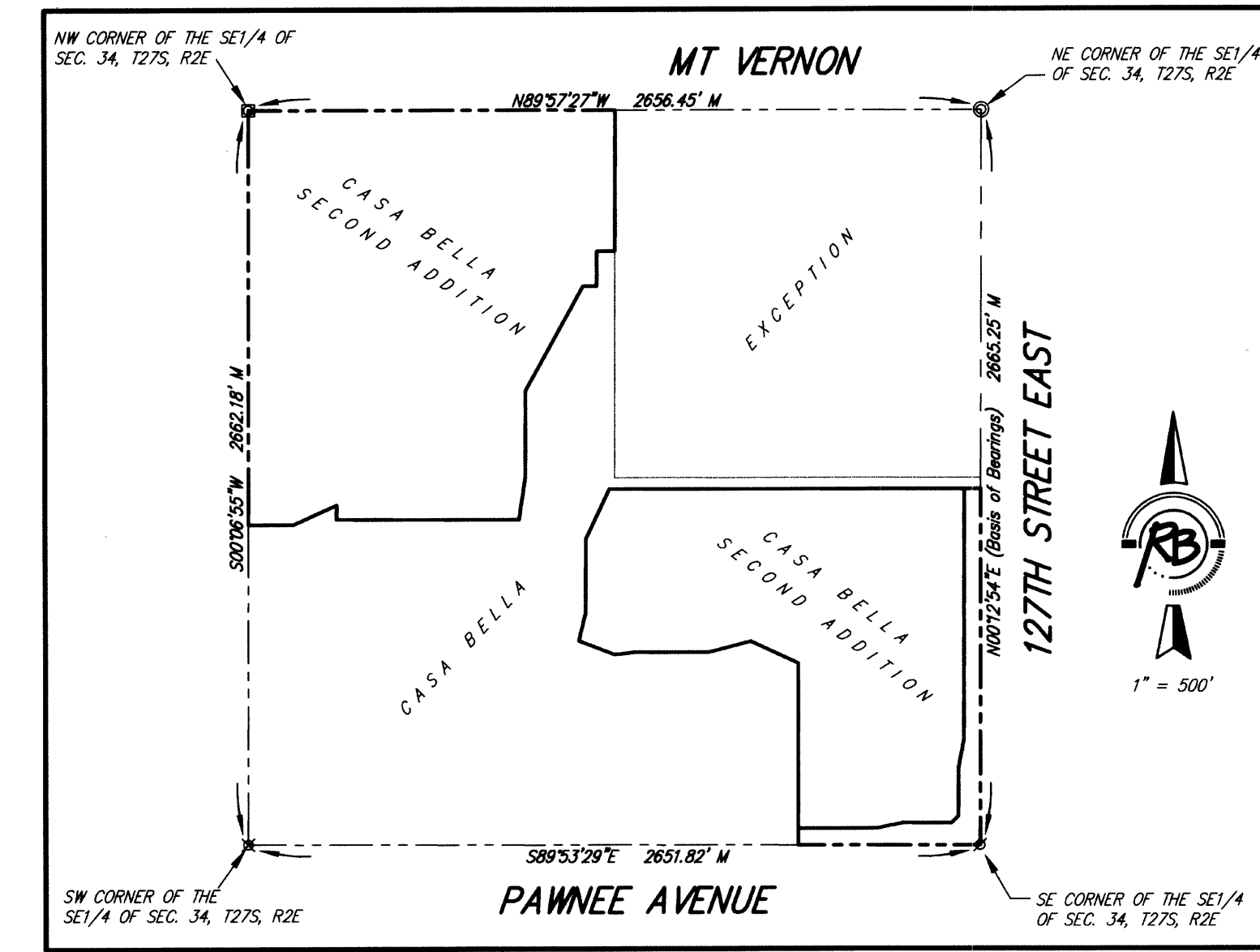
Wichita, Sedgwick County, Kansas



© 2018 GARVER, LLC
 THIS DOCUMENT, ALONG WITH THE IDEAS AND DESIGNS CONVEYED HEREIN, SHALL BE CONSIDERED INSTRUMENTS OF PROFESSIONAL SERVICE AND ARE PROPERTY OF GARVER, LLC. ANY USE, REPRODUCTION, OR DISTRIBUTION OF THIS DOCUMENT, ALONG WITH THE IDEAS AND DESIGN CONTAINED HEREIN, IS PROHIBITED UNLESS AUTHORIZED IN WRITING BY GARVER, LLC OR EXPLICITLY ALLOWED IN THE GOVERNING PROFESSIONAL SERVICES AGREEMENT FOR THIS WORK.



Digitally Signed 08/20/2018



BENCH MARK: SRB BRASS DISC 5.545" E. & 5.15" S. OF THE N.W. COR., SW1/4, SEC. 35, 127S, R2E. ELEVATION = 1348.35 (NGVD29)

P = Plotted (Casa Bella)
 M = Measured

SURVEY MARKER LEGEND

- PK NAIL IN CONCRETE (FOUND - ORIGIN UNKNOWN)
- 1/2" IRON PIPE (FOUND - ORIGIN UNKNOWN)
- 3/4" IRON PIPE (FOUND - ORIGIN UNKNOWN)
- 5/8" REBAR W/GARBER CAP (FOUND)
- 1" BAR (FOUND - ORIGIN UNKNOWN)
- 5/8" REBAR W/SRB CAP (FOUND)
- 5/8" REBAR W/R&B CAP (FOUND)
- 5/8" REBAR W/R&B CAP (SET)

BLOCK	LOT NO.	ELEVATION (NGVD29)
2	1, 2, 3, 4, 5, 6, 7	1345.4
3	10, 11, 12	1345.4
3	1, 2, 3, 4, 5, 6, 7, 8, 9	1338.4
6	1, 2, 3, 4, 5	1336.8

SHEET 2 OF 2

File: L:\2018\18267011 - Casa Bella Phase 5\Drawings\C3D\Casa Bella 2nd Plat.dwg, Last Save: 8/13/2018 8:24 AM, Last saved by: DRStandrich
 Last plotted by: Dolechek, Mark, T., Plot Date: 8/20/2018 4:03 PM, Plotter used: None
 Plot Scale: 1" = 500'

REV.	DATE	DESCRIPTION	BY



CITY OF WICHITA
 WICHITA, KANSAS
 CASA BELLA 2nd ADD.
 PHASE 5 - SS

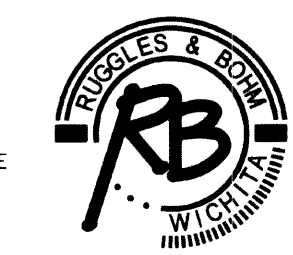
Casa Bella 2nd Plat

JOB NO.: 18267011
 DATE: JULY 2018
 DESIGNED BY: .
 DRAWN BY: .

BAR IS ONE INCH ON ORIGINAL DRAWING
 0 1" IF NOT ONE INCH ON THIS SHEET, ADJUST SCALES ACCORDINGLY.

DRAWING NUMBER

SHEET NUMBER 15 OF 15



Ruggles & Bohm, P.A.
 Engineering, Surveying, Land Planning
 924 North Main (316) 264-8008
 Wichita, Kansas 67203 (316) 264-4621 fax
 www.rbkansas.com E-mail: info@rbkansas.com