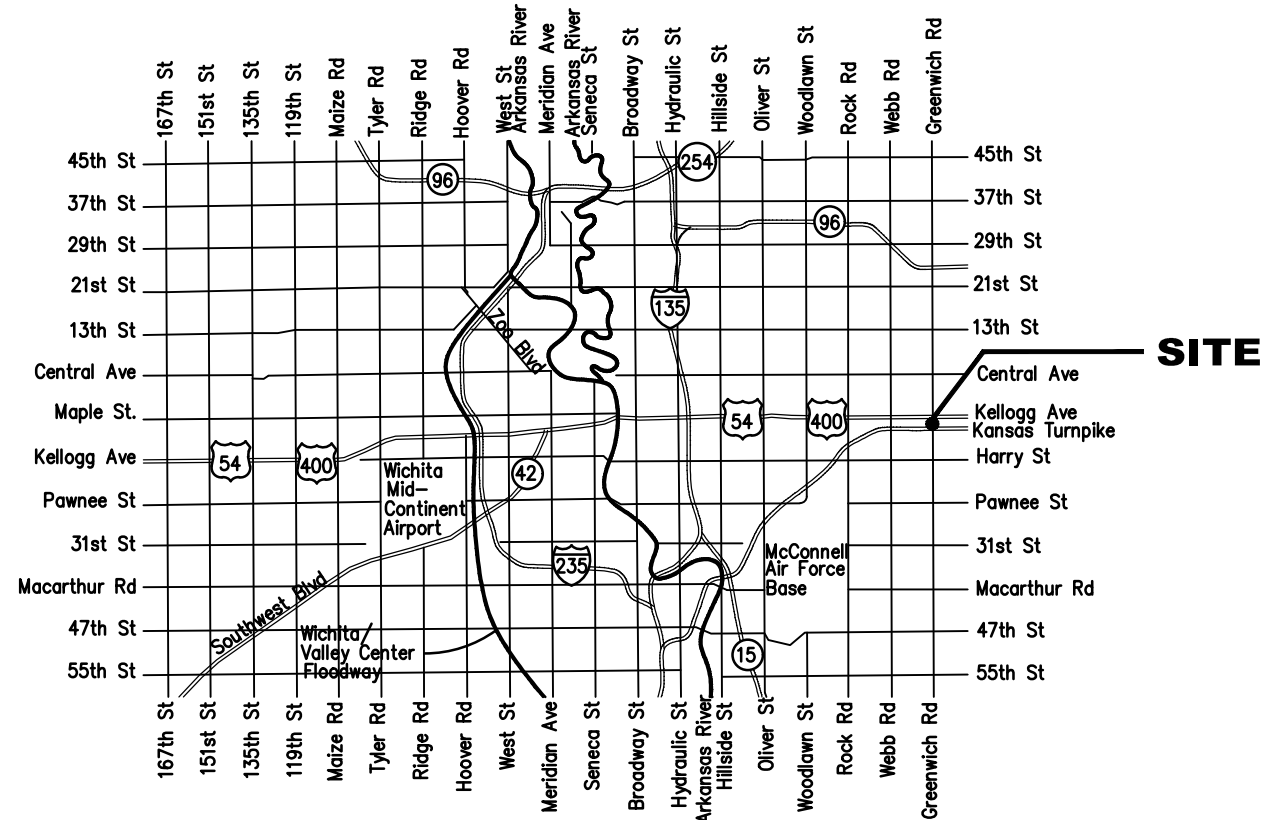


Sanitary Sewer Improvements to serve **EAST KELLOGG ACRES** CITY OF WICHITA, KANSAS

Gary Janzen, P.E. City Engineer
Project Number
468-85290
OCA Number
628103

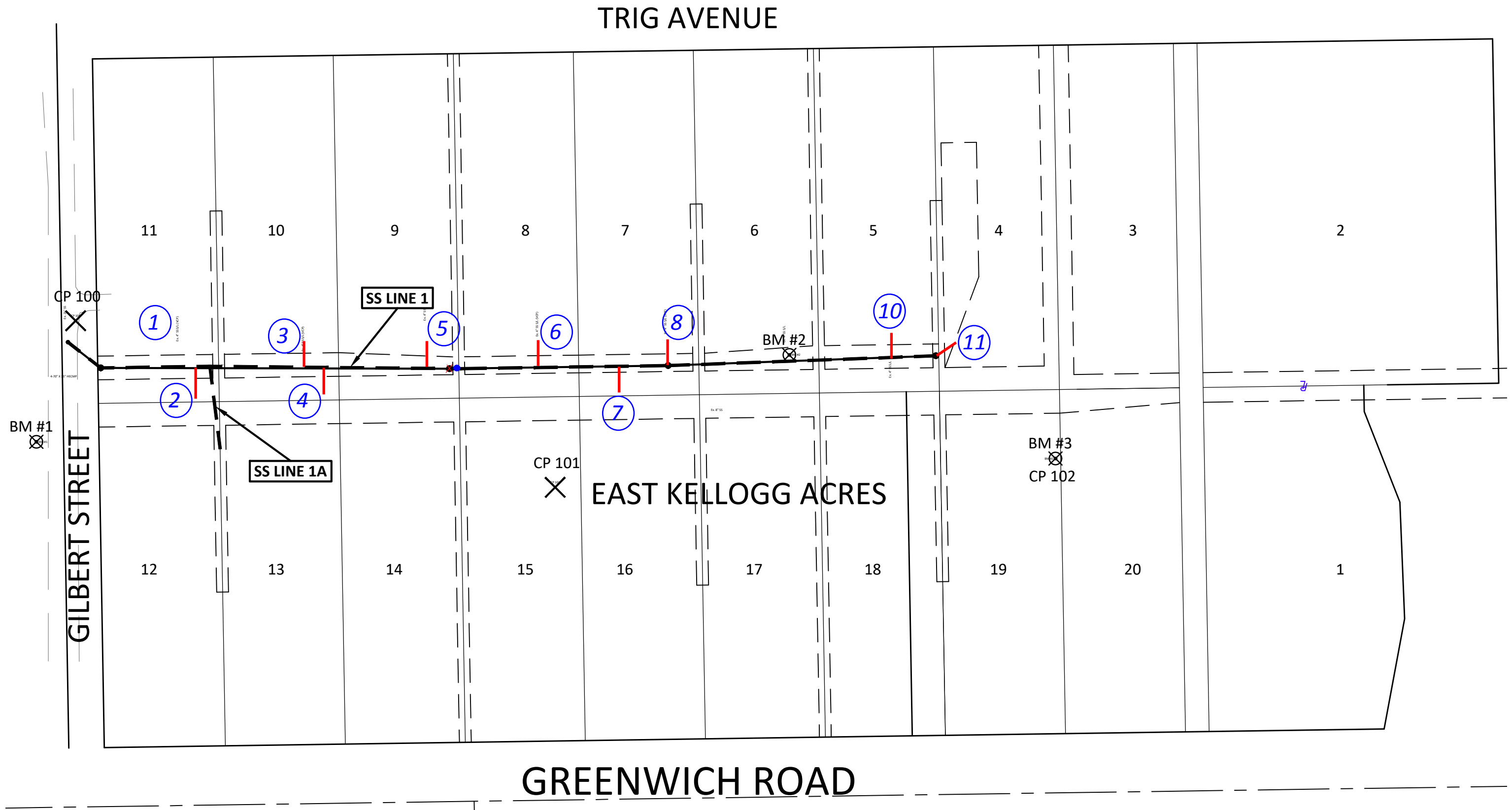
Dutton Construction - Contractor
G. Baalman - City of Wichita, Field Project Engineer
D. Hicks - City of Wichita, Inspector
As-built
Stubs & Risers
Release Date (for connection purposes only): 9/15/2019
Completion Date: 12/20/2019
pdf: 10/21/2019 apr



VICINITY MAP

SHEET INDEX

1	Title Sheet
2	General Notepage
3-4	Sanitary Sewer Plan & Profiles
5-7	Sanitary Sewer Details
8-12	Erosion Control Details



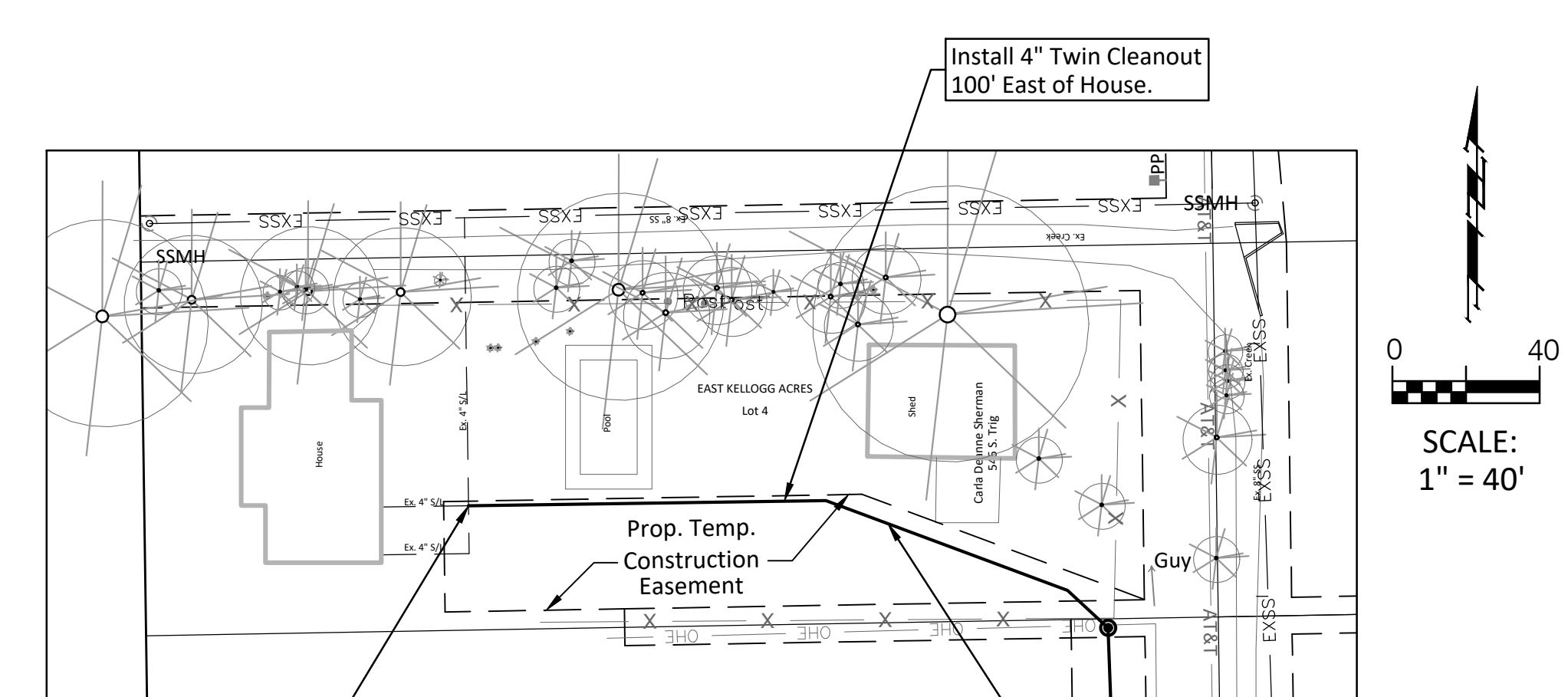
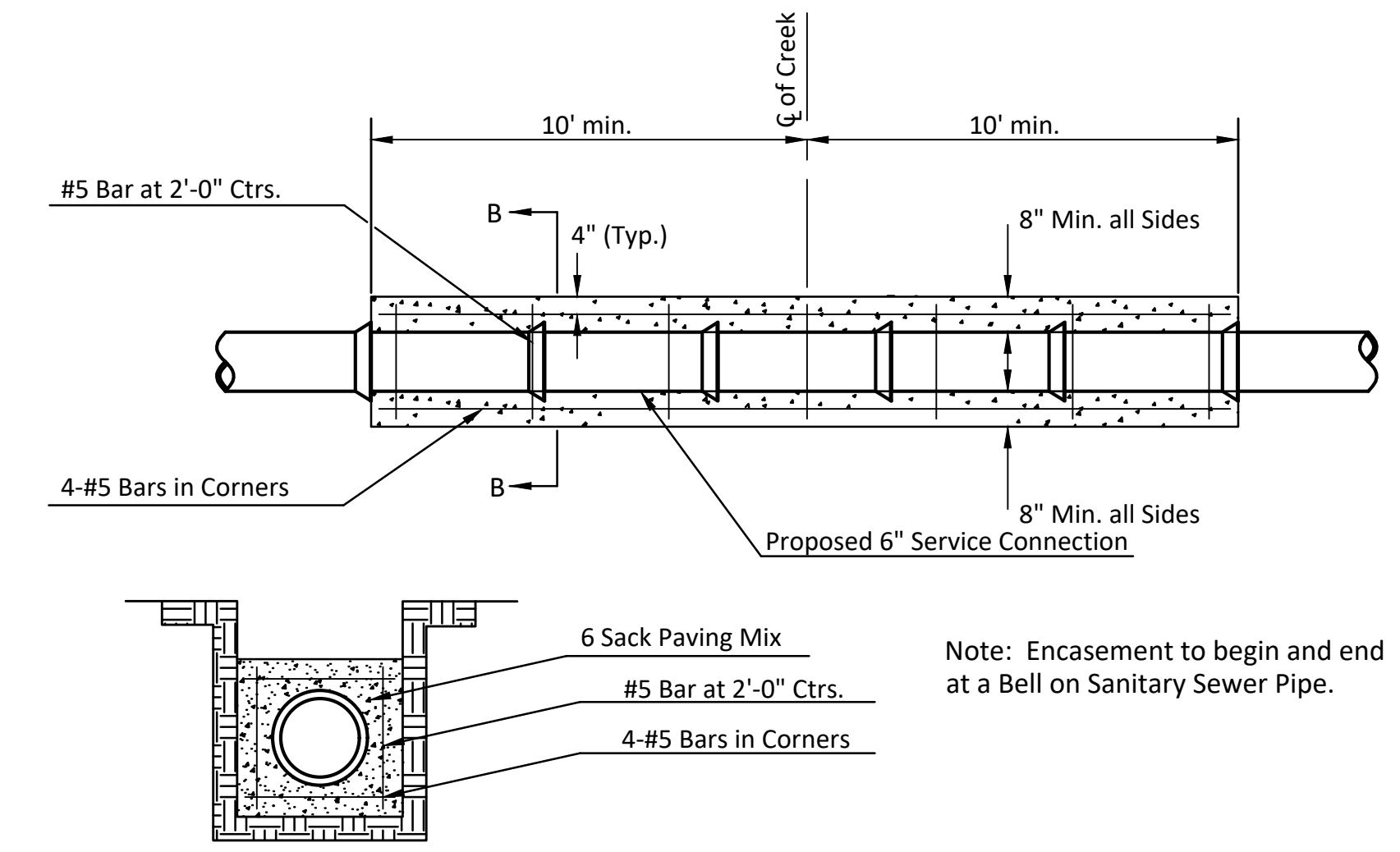
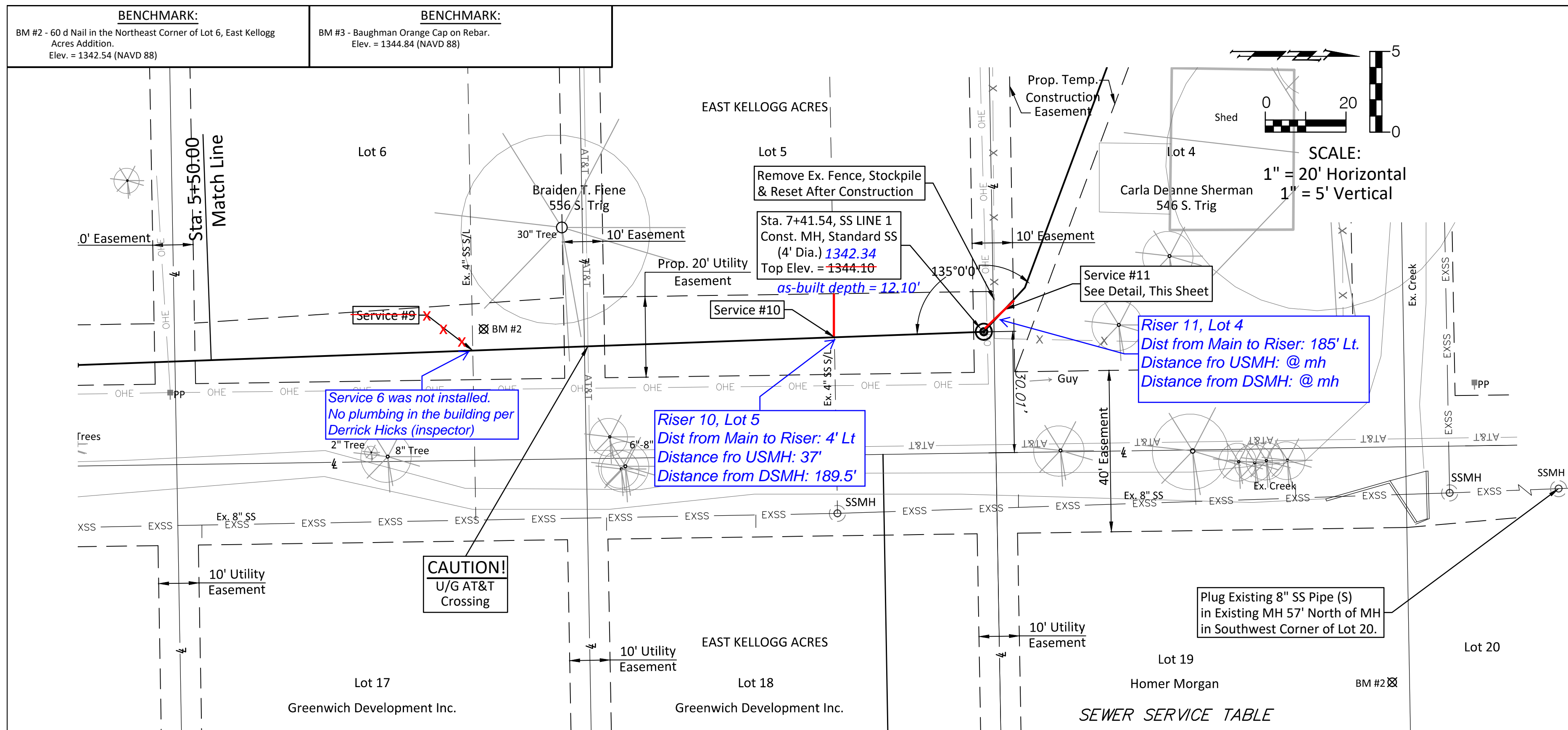
BENCHMARKS

- BM #1 - Chiseled "□" on the East End of the Wingwalls on the South Side of Gilbert Avenue.
Elev. = 1340.88 (NAVD 88)
- BM #2 - 60 d Nail in the Northeast Corner of Lot 6, East Kellogg Acres Addition.
Elev. = 1342.54 (NAVD 88)
- BM #3 - Baughman Orange Cap on Rebar.
Elev. = 1344.84 (NAVD 88)

CONTROL POINTS

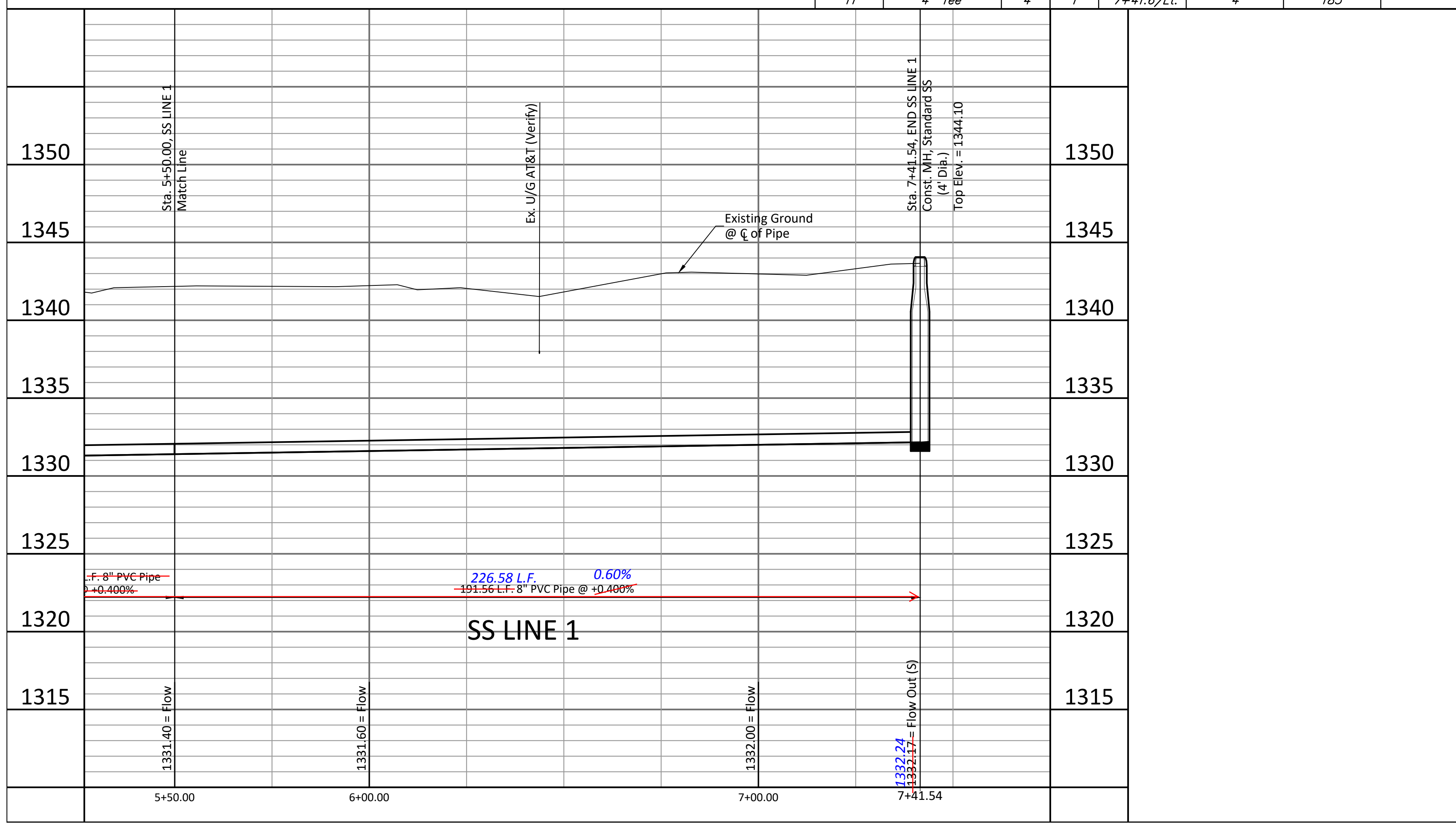
- CP 100 - #4 Rebar w/ Orange Cap
N-1682521.404
E-1686070.737
- CP 101 - #4 Rebar w/ Orange Cap
N-1682926.955
E-1686211.589
- CP 102 - #4 Rebar w/ Orange Cap
N-1683350.065
E-1686187.226

JANUARY 2018



SEWER SERVICE TABLE

NUMBER	TYPE	LOCATION		FOR INFORMATION ONLY	
		LOT NO.	STATION/DIRECTION	APPROXIMATE LENGTH 4" PIPE	VERTICAL
9	4" Tee	6	6+14.9/Lt.	4'	4'
10	4" Tee	5	7+04.5/Lt.	4'	4'
11	4" Tee	4	7+41.6/Lt.	4'	185'



Saw Existing 4" Service Lines and Install 4" PVC Tee (S). Begin Installation of 4" Service Line. Service Line Elev. = 1346.7±

