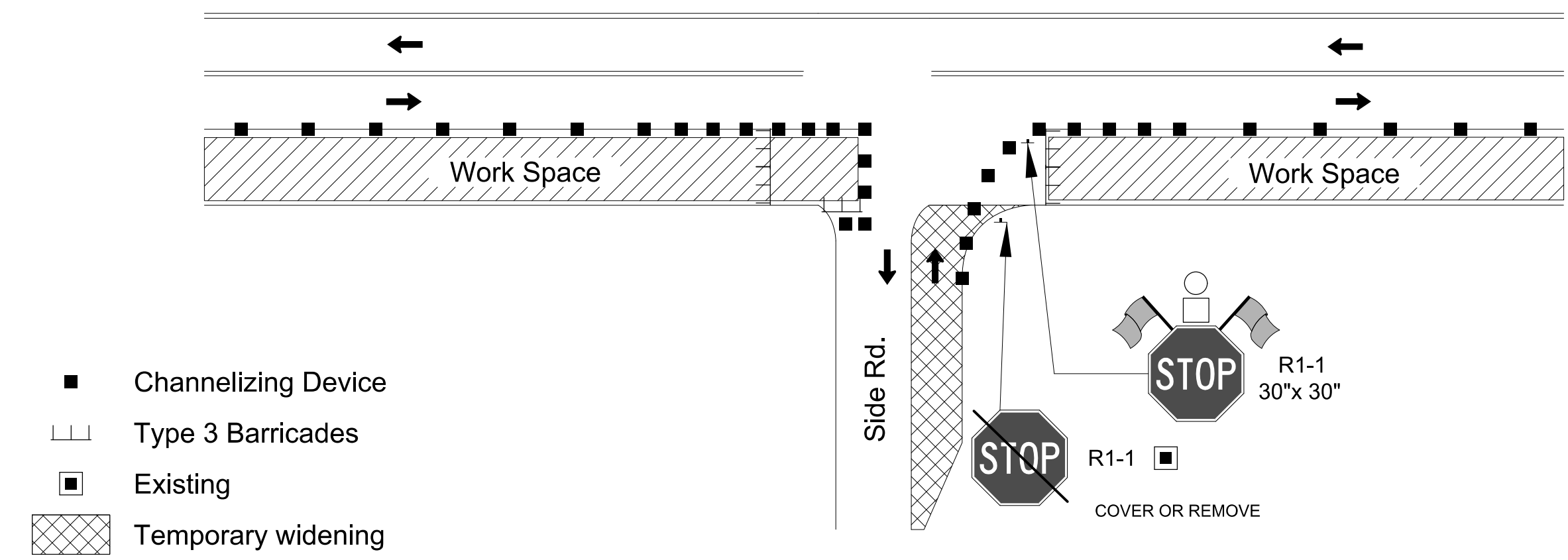
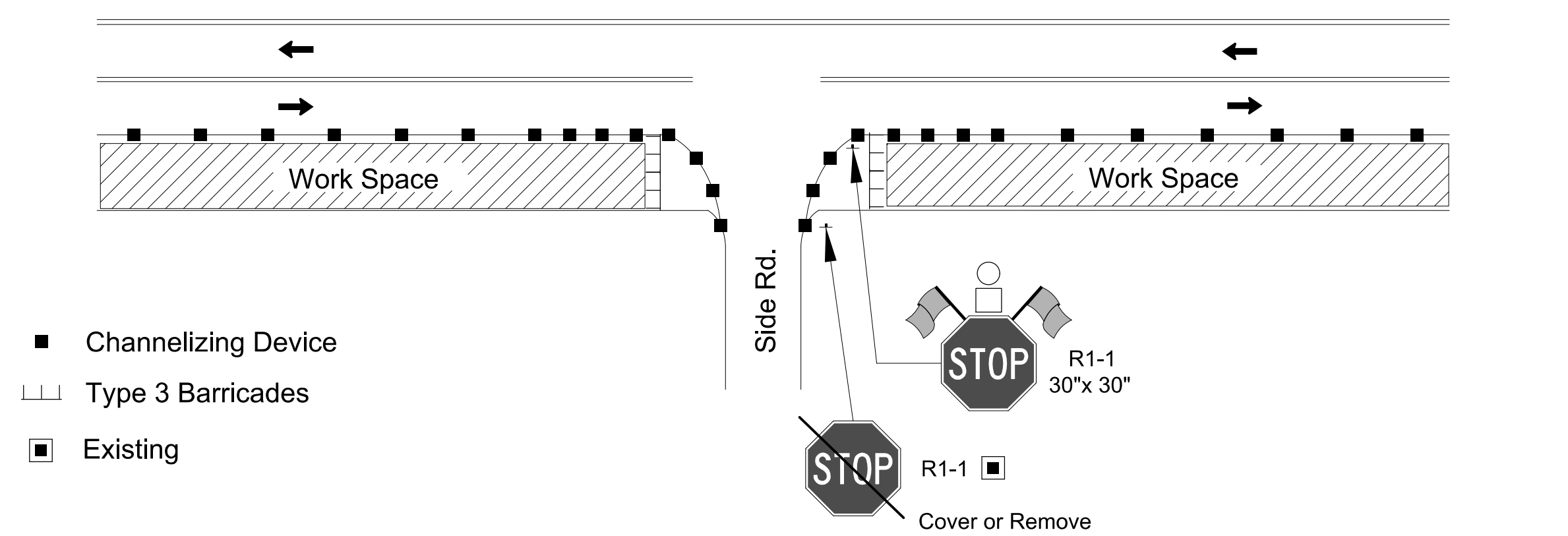


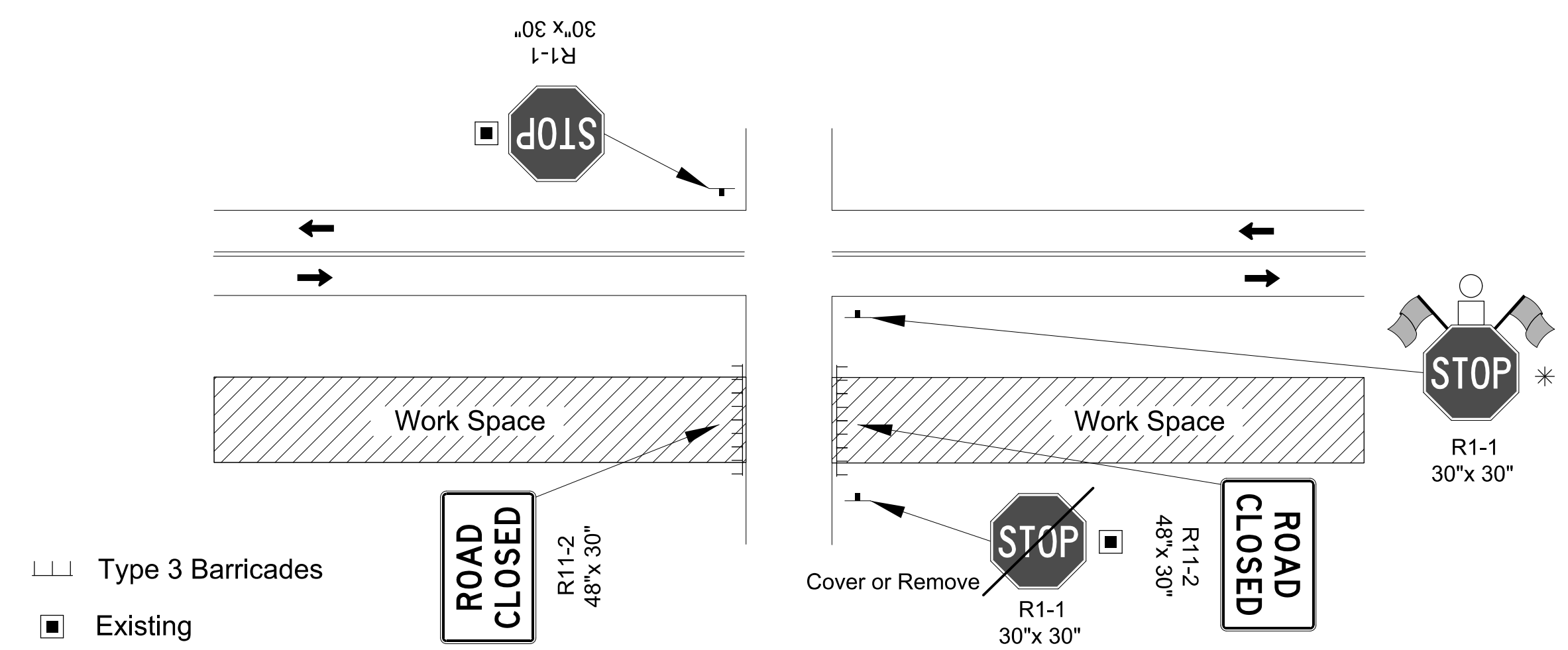
**FIGURE 1: SIDE ROAD OR ENTRANCE CLOSED THROUGH WORK AREA**



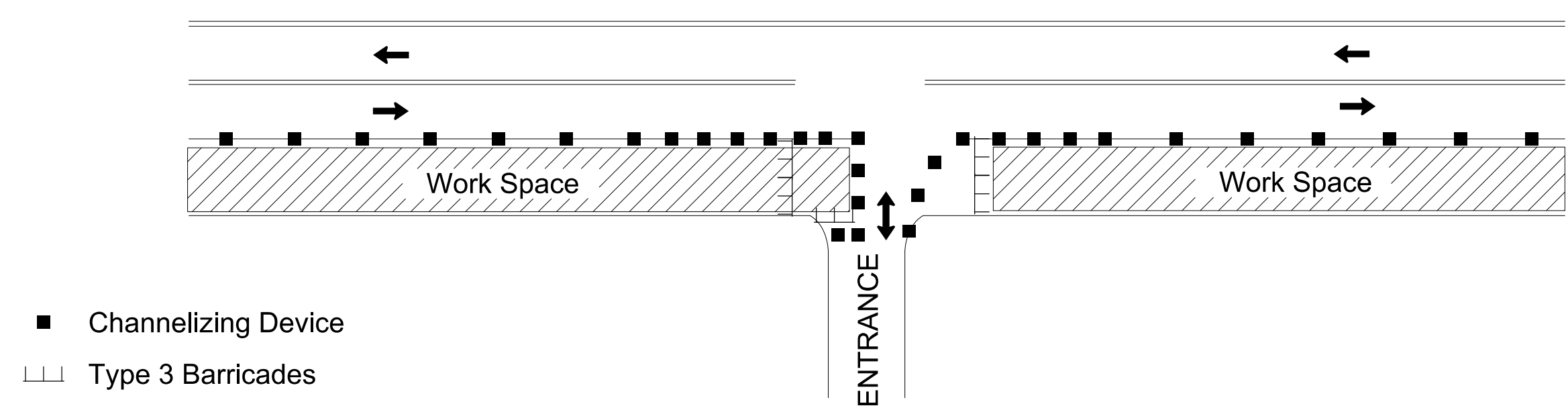
**FIGURE 4: SIDE ROAD OR ENTRANCE CONSTRUCTED HALF AT A TIME: TWO WAY TRAFFIC REQUIRED**



**FIGURE 2: SIDE ROAD OR ENTRANCE OPEN THROUGH WORK AREA**



**FIGURE 5: SIDE ROAD OPEN THROUGH WORK AREA ON DIVIDED ROADWAY**



**FIGURE 3: LOW VOLUME ENTRANCE CONSTRUCTED HALF AT A TIME**

Note: Consider large vehicles making right turns into and out of entrance and use figure 4 as needed

Plotted : 03-OCT-2019 14:17  
Drawn By : TE705.dgn

NO.	DATE	REVISIONS	BY	APPD

**KANSAS DEPARTMENT OF TRANSPORTATION**

**TRAFFIC CONTROL  
ACCESS THROUGH THE WORK AREA**

TE705

FHWA APPROVAL	06/01/15	APPD	Kristina Erickson
DESIGNED	R.W.B. DETAILED	R.W.B. QUANTITIES	TRACED
DESIGN CK.	DETAIL CK.	QUAN. CK.	TRACE CK.