

GENERAL NOTES:

1. Contractor will be required to provide notice to utility companies a minimum of seventy-two (72) hours prior to any excavation, as follows:

Kansas One-Call 687-2470

The Contractor must notify the following in case of an emergency:

- Cox Communications 262-4270
- Kansas Gas Service 1-888-482-4950
- Westar Energy 383-8650
- Aquila Energy 1-800-303-0357
- AT&T 268-2245
- City of Wichita Water Dept. 268-4563
- City of Wichita Sewer Maint. 268-4024
- City of Wichita Storm Sewer Maint. 268-4090
- City of Wichita Traffic Maint. 268-4034
- Conoco Phillips Pipeline Co. 1-877-267-2290
- Southern Star Pipeline Co. 529-6600
- Kinder-Morgan Pipeline Co. 1-888-844-5658

2. Utility service lines, poles, valve boxes, meters, and etcetera are to be adjusted as necessary by others prior to construction unless the plans specifically call for their adjustment by the Contractor or unless the plans specifically identify a utility to be adjusted by its owner during construction. Existing utilities and their location, as shown on the plans, represent the best information obtainable for design. The Contractor will be required to work around existing utilities within the right-of-way which do not conflict with proposed construction.

3. Rubble from the removal of miscellaneous structures and excess excavation which is to be wasted shall be disposed of on sites to be provided by the Contractor. These sites shall be approved by the Engineer as to suitability, appearance and site location. Locations, in the opinion of the Engineer, that will leave an unsightly appearance will not be approved. All disposal sites must be approved by the Kansas Department of Health and Environment. Material either stockpiled or disposed of in a flood plain would require a Kansas State Board of Agriculture permit. Any material dumped in waters of the United States or wetlands is subject to U.S. Corps of Engineers permitting regulations. Any material buried or stockpiled beyond approved construction limits would require additional archaeological investigations unless buried in a previously approved borrow location.

4. Trees and shrubs in public right-of-way which are in direct conflict with proposed new construction shall be removed by the Contractor with the Engineer's approval. Trees and shrubs which are not in direct conflict with proposed new construction shall be saved and protected from damage.

5. The Contractor shall give all property owners and/or tenants of developed property abutting the construction of this project a minimum of ten (10) days notice prior to start of construction.

6. The Contractor shall be responsible for preserving property irons. The Contractor will be required to re-establish any property irons which are damaged or destroyed by his construction operations. Such irons shall be re-established by a licensed land surveyor in accordance with state laws.

7. All existing and proposed erosion control measures including silt fencing, erosion control mat, straw bales, inlet barriers, and const. entrance shall be maintained throughout construction by the contractor and until project is accepted by the City of Wichita. The on-site engineer shall complete weekly reports on the status of erosion control measures. The contractor shall be required to comply with maintenance and/or replacement of erosion control measures as determined by the on-site engineer until project is accepted by City of Wichita. Maintenance and/or replacement of erosion control measures to be paid by L.S. bid item "Maintain Existing BMP's."

8. The Contractor shall adjust water valve boxes and fire hydrants as directed by the Engineer at the price bid for said adjustments. The Water Department shall field locate water valves one time during construction when requested by Contractor. It shall be the Contractor's responsibility to preserve such field locations during the construction process. Water valves, water valve boxes or fire hydrants damaged during construction shall be repaired by the Contractor at his own expense.

9. All areas within disturbed during construction shall be seeded, mulched, and fertilized as follows (Temporary Seeding):

Seed: Annual Rye grass -- 5 lbs./1000 sq. ft.

All costs associated with seeding shall be included in bid item "Seeding". All seeding operations shall conform to City of Wichita Standard Specifications.

10. All construction shall be completed following current City Standard Specifications and Special Provisions.

11. All excess excavation shall remain on-site and shall be stockpiled or spread at a location determined by the engineer.

12. Opening and closing of water valves shall be done slowly to prevent damage to the water distributions system from water hammer. All valves closed by the contractor must be reopened as new construction permits. Project inspector must ascertain that any valve closed by the Contractor is reopened. Contractor will be permitted to operate water valves only when the project inspector assigned to the project is present.

13. The Developer for this project is Kevin Mullen
8100 E 22nd St N, Bldg 1000, Wichita, KS 67226
PH# (316) 684-7300
Email Kevin@ritchdevelopment.com

WATER DISTRIBUTION SYSTEM to serve

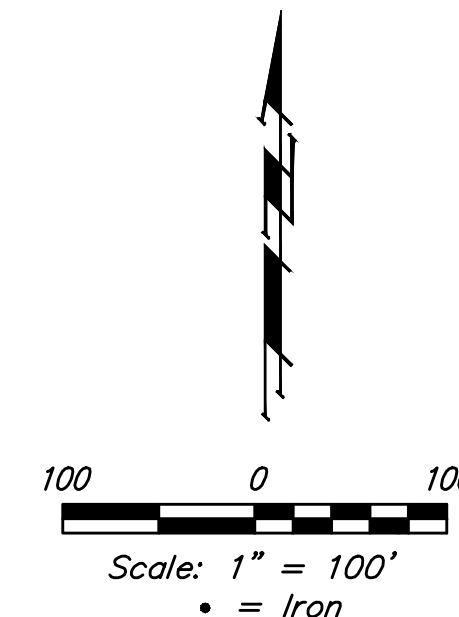
THE RANCH 2ND ADDITION CITY OF WICHITA, KANSAS

Gary Janzen, P.E. City Engineer

Project Number

448-2019-015117

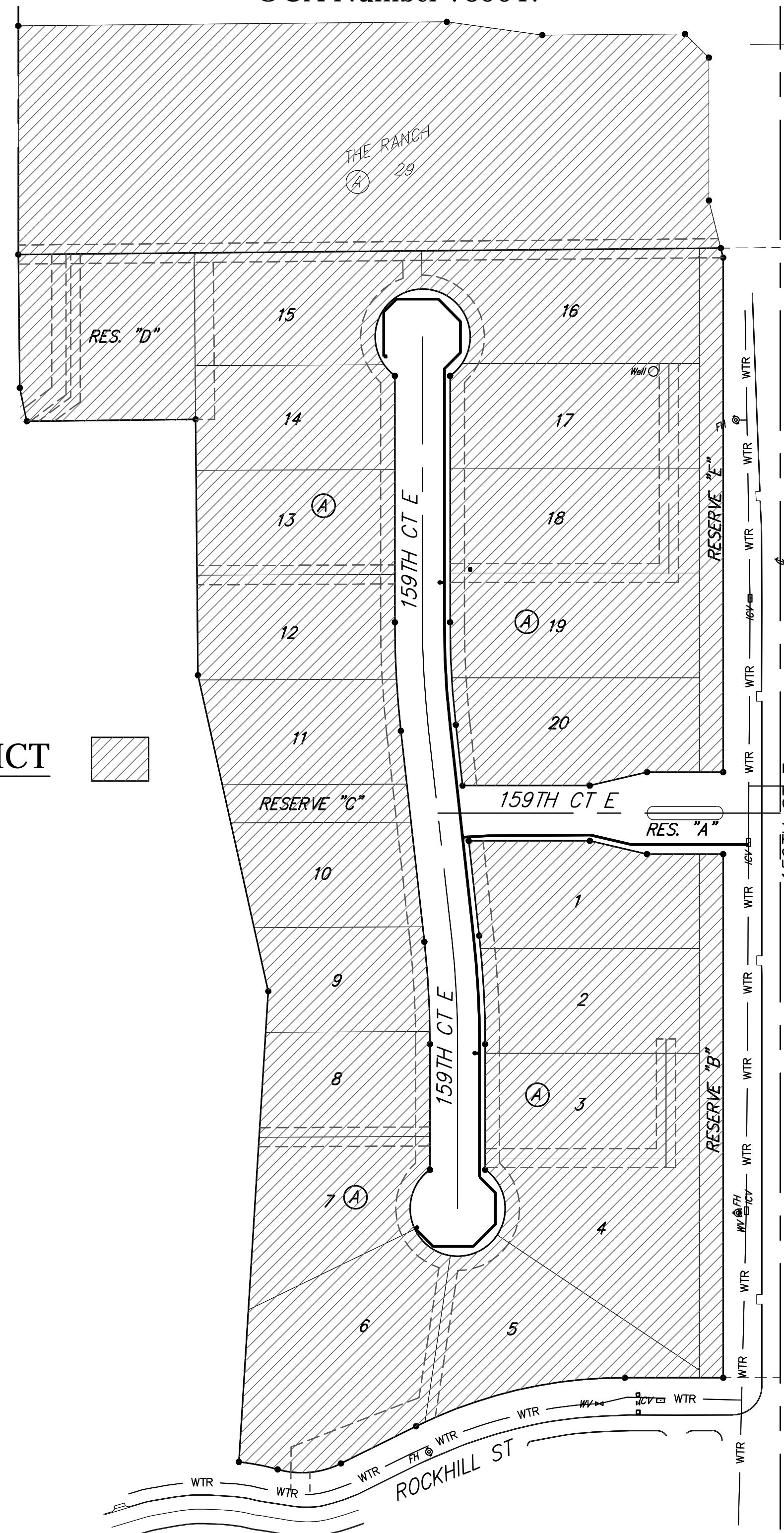
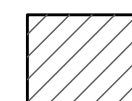
OCA Number 735647



SHEET INDEX

Title Sheet	1
Standard Water Detail	2
Miscellaneous Water Detail	3
Line 1	4-5
Line 2	6
Erosion Control Plan	7
Erosion Control BMP Details	8-12
Coordinate Sheet	13
Copy of Plat	14

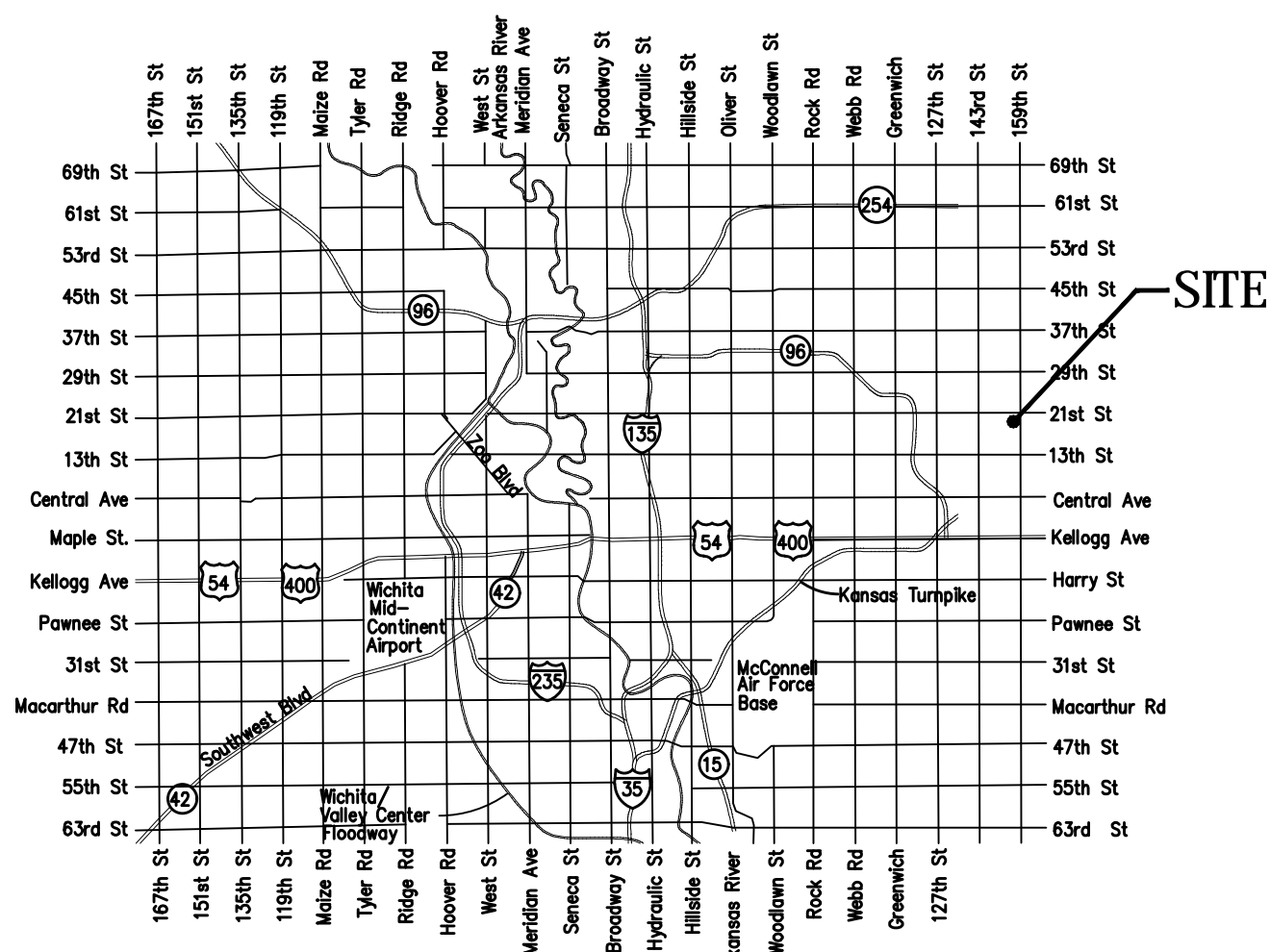
BENEFIT DISTRICT



BENCHMARKS

#1: "X" CUT CHISELED ON CURB INLET,
8.9' S. & 27.5' W. OF THE NW COR., LOT
22, BLOCK 1, QUAIL CROSSING ADDITION,
PHASE 2, 22.3' EAST OF @ N. 159TH ST. E.
ELEV. = 1370.15 (NAVD88)

#2: "X" CUT CHISELED ON CURB INLET,
13.2' S. & 60.1' E. OF THE NE COR., LOT
2, BLOCK A, THE RANCH 2ND ADDITION,
24.9' WEST OF @ N. 159TH ST. E.
ELEV. = 1369.05 (NAVD88)



VICINITY MAP

Construction Sequence:

1. Sanitary Sewer by Other Contract
2. SWD Grading & Storm Sewer by Other Contract
3. Water Project by This Contract
4. Paving by Other Project



Baughman Company, P.A. 315 Ellis St. Wichita, KS 67211 P 316-262-7271 F 316-262-0149
ENGINEERING | SURVEYING | PLANNING | LANDSCAPE ARCHITECTURE