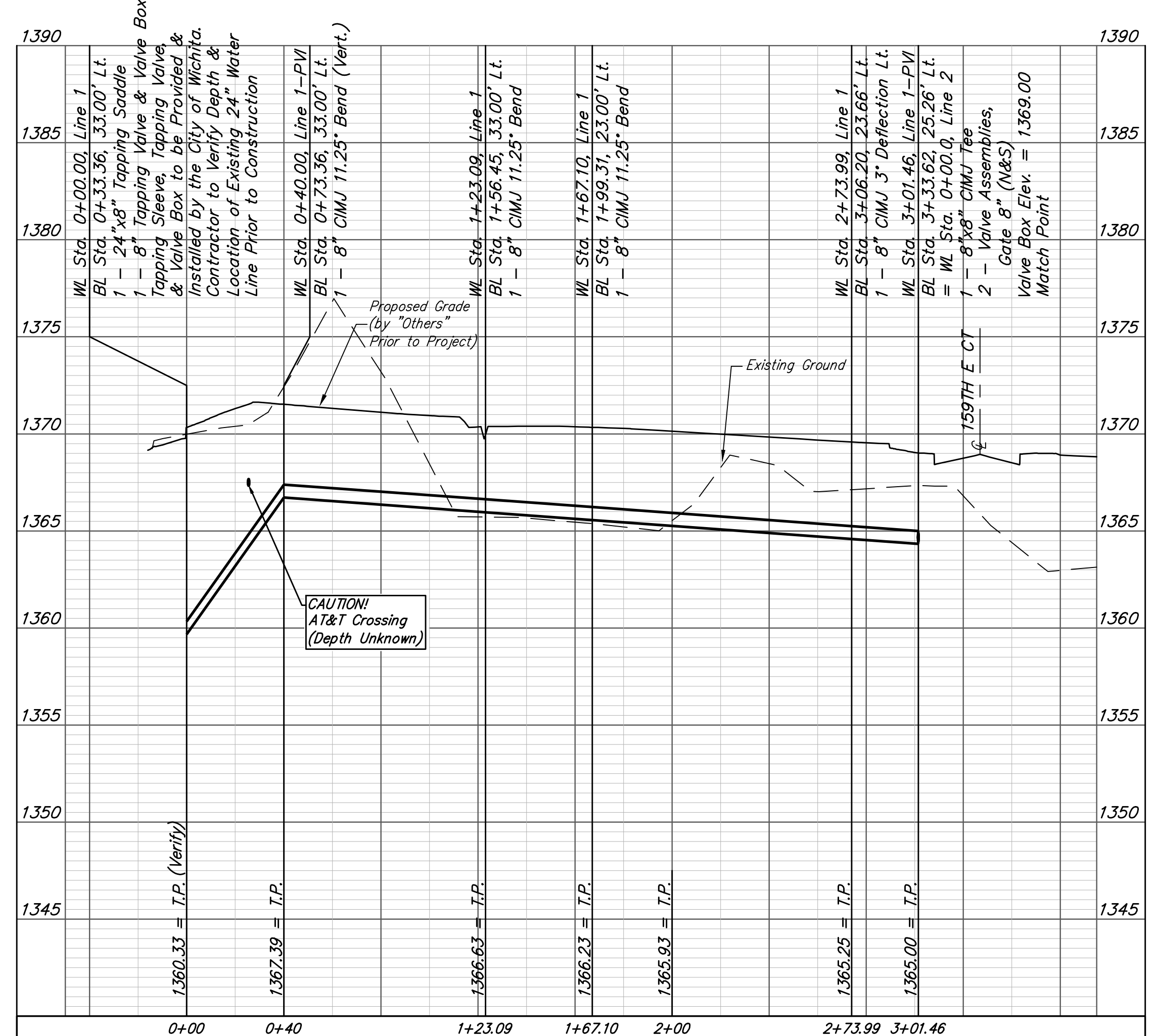
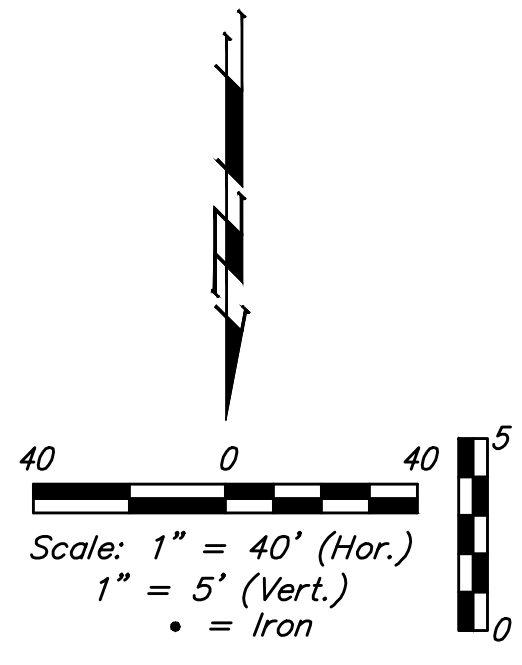
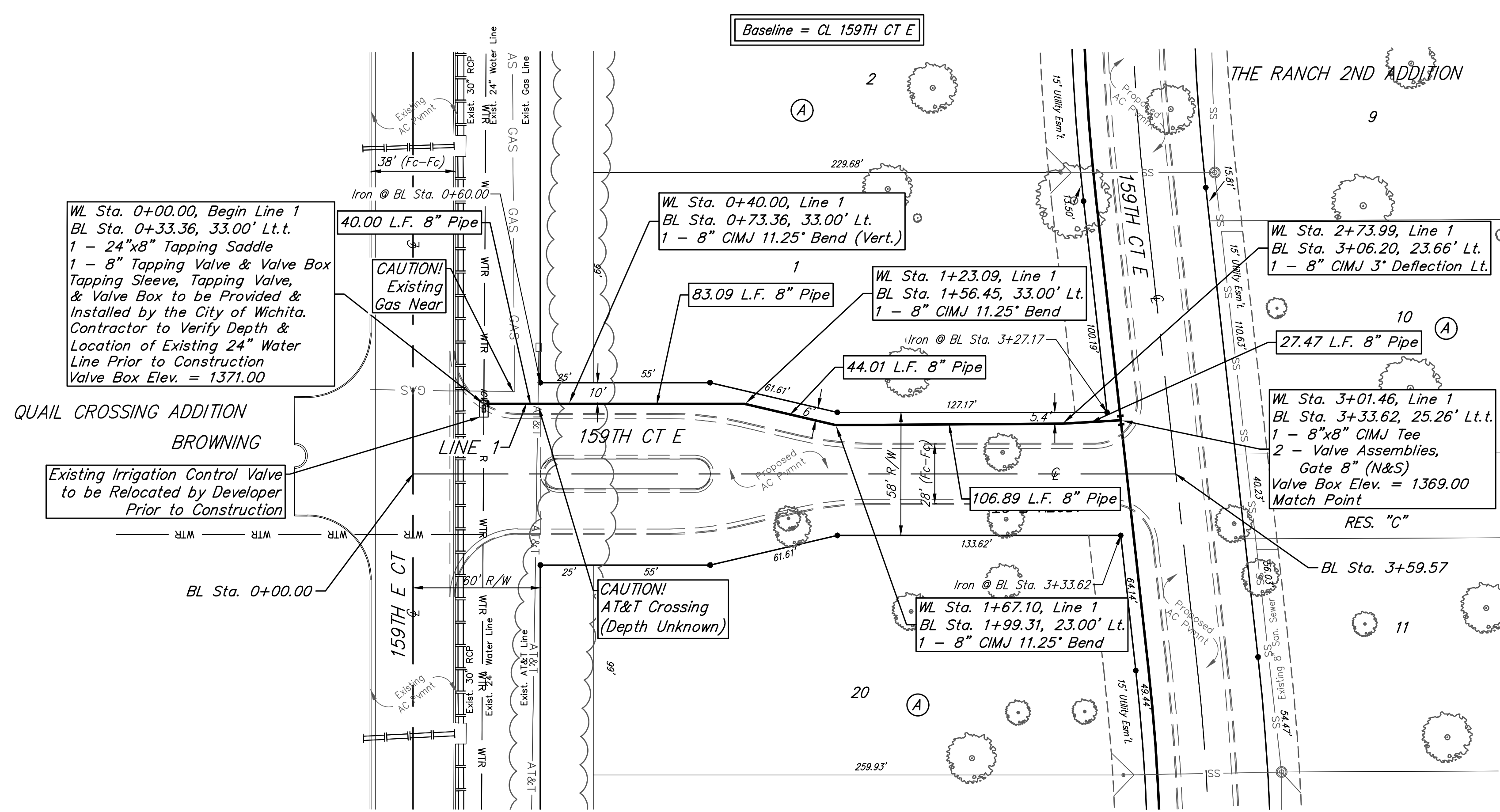


**BENCHMARKS:**  
 #1: "X" CUT CHISELED ON CURB INLET,  
 8.9' S. & 27.5' W. OF THE NW COR., LOT  
 22, BLOCK 1, QUAIL CROSSING ADDITION,  
 PHASE 2, 22.3' EAST OF @ N. 159TH ST. E.  
 ELEV. = 1370.15 (NAVD88)

#2: "X" CUT CHISELED ON CURB INLET,  
 13.2' S. & 60.1' E. OF THE NE COR., LOT  
 2, BLOCK A, THE RANCH 2ND ADDITION,  
 24.9' WEST OF @ N. 159TH ST. E.  
 ELEV. = 1369.05 (NAVD88)



**Baughman** The Ranch 2nd Addition  
**LINE 1**  
 Water Distribution System

Baughman Company, P.A. 315 Ellis St. Wichita, KS 67211 P 316-262-7271 F 316-262-0149  
 ENGINEERING | SURVEYING | PLANNING | LANDSCAPE ARCHITECTURE

PROJECT NUMBER: 2019-015117 DESIGN: AEG DRAWN: HW

APPROVED: DATE: 10/07/19

REVISIONS:

SCALE: Noted SHEET: 4 OF 14

E:\Projects\The Ranch 2nd\_1904\PH47\Engineering\Phase 1\WTR\WTR PLANS.dwg

