

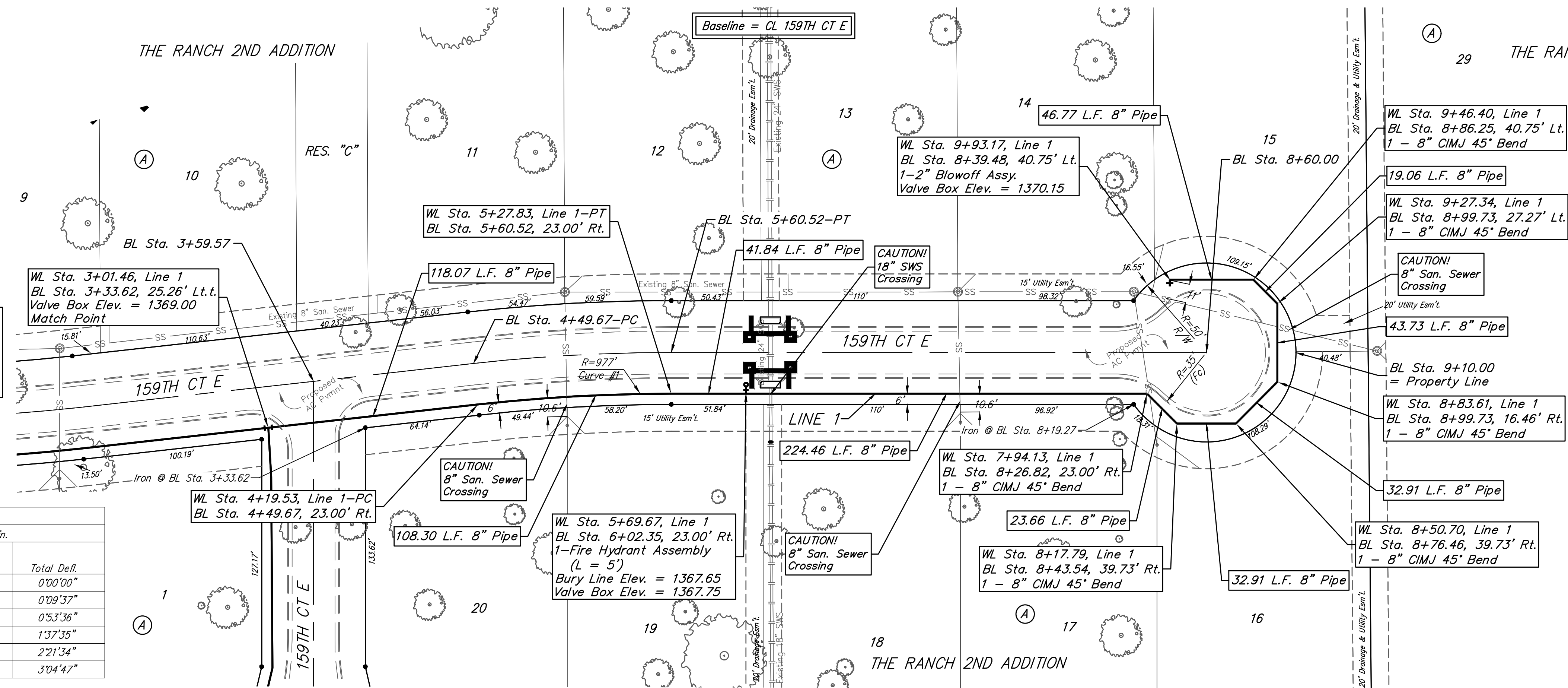
**BENCHMARKS:**  
 #1: "X" CUT CHISELED ON CURB INLET,  
 8.9' S. & 27.5' W. OF THE NW COR., LOT  
 22, BLOCK 1, QUAIL CROSSING ADDITION,  
 PHASE 2, 22.3' EAST OF @ N. 159TH ST. E.  
 ELEV. = 1370.15 (NAVD88)

#2: "X" CUT CHISELED ON CURB INLET,  
 13.2' S. & 60.1' E. OF THE NE COR., LOT  
 2, BLOCK A, THE RANCH 2ND ADDITION,  
 24.9' WEST OF @ N. 159TH ST. E.  
 ELEV. = 1369.05 (NAVD88)

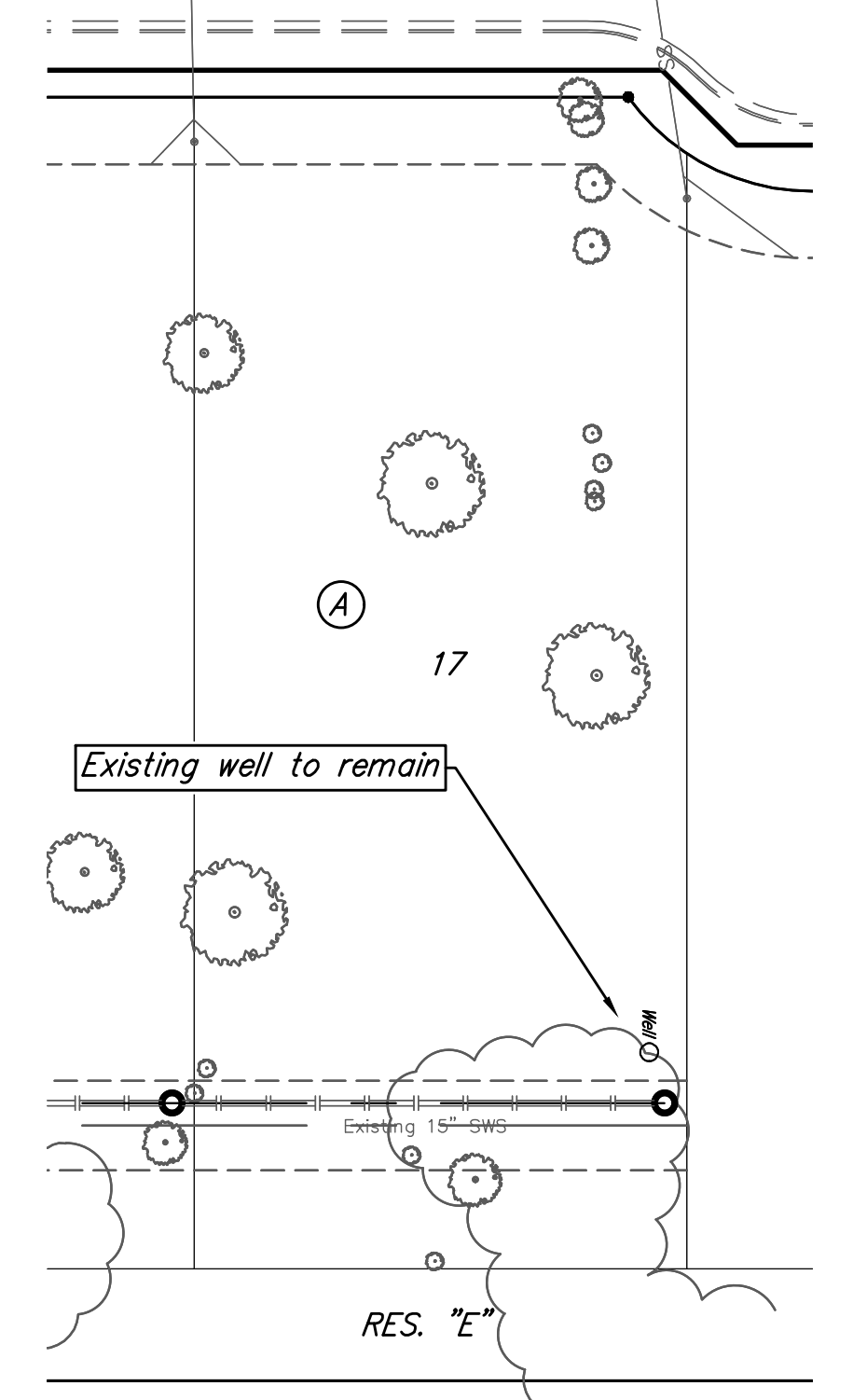
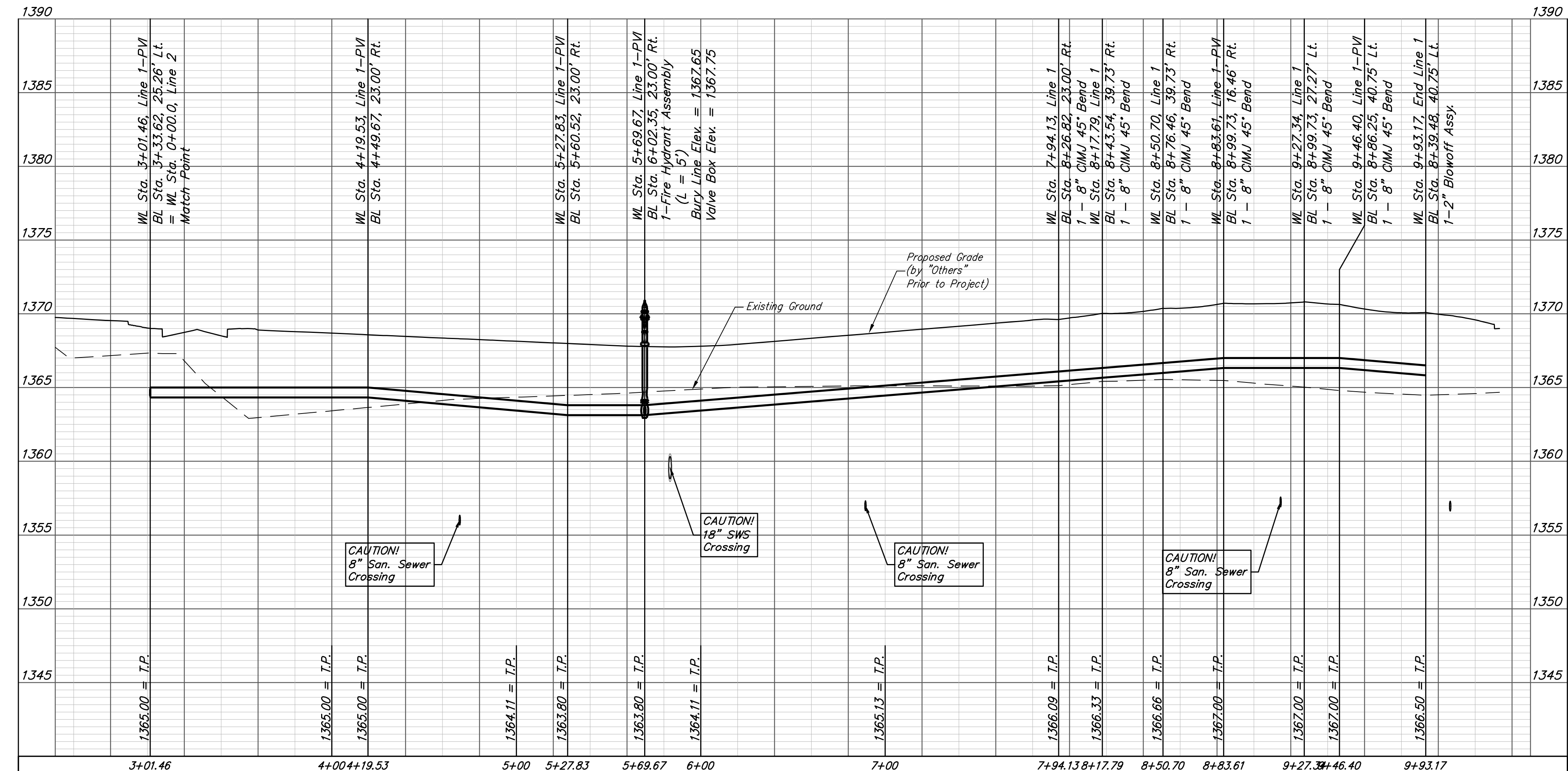
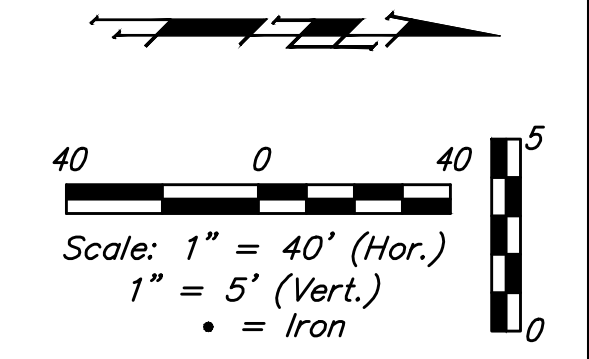
Existing trees which are in direct conflict with proposed new construction shall be removed by the Contractor ONLY with approval of the Engineer. Trees not in direct conflict with proposed new construction shall remain and be protected from damage. Cost shall be included in bid item "Site Clearing"

Curve #1  
 Curve Data Based on Centerline of Pipe  
 Rad. = 977' Delta = 62°10'4" Tangent = 54.20'  
 Arc = 108.30' L.C. = 108.24' Def./Ft. = 1.75931 Min.

Station	Arc	Chord 8' Left	Defl.	Total Defl.
4+19.53	-	-	0°00'00"	0°00'00"
4+25.00	5.47'	5.35'	0°09'37"	0°09'37"
4+50.00	25.00'	24.44'	0°43'59"	0°53'36"
4+75.00	25.00'	24.44'	0°43'59"	1°37'35"
5+00.00	25.00'	24.44'	0°43'58"	2°21'34"
5+24.56	24.56'	24.01'	0°43'13"	3°04'47"



NOTE: Maintain 10 ft. of horizontal separation (outside dimension to outside dimension) between the water lines and sanitary sewer cleanout risers.



**Baughman** The Ranch 2nd Addition  
**LINE 1**  
 Water Distribution System

Baughman Company, P.A. 315 Ellis St. Wichita, KS 67211 P 316-262-7271 F 316-262-0149  
 ENGINEERING | SURVEYING | PLANNING | LANDSCAPE ARCHITECTURE

PROJECT NUMBER: 2019-015117  
 DESIGN: AEG  
 DRAWN: HW  
 APPROVED: [Signature]  
 DATE: 10/07/19

REVISIONS:

SCALE: Noted  
 SHEET: **5 OF 14**

E:\Projects\The Ranch 2nd\_1904\PH47\Engineering\Phase 1\WTR\WTR PLANS.dwg