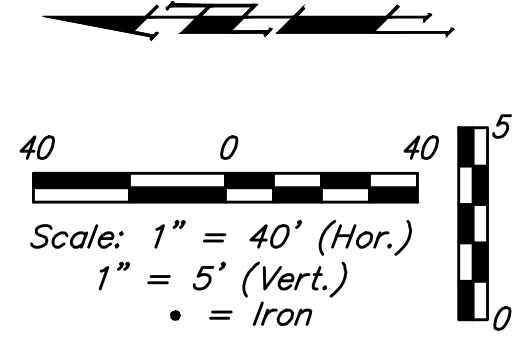


**BENCHMARKS:**  
 #1: "X" CUT CHISELED ON CURB INLET,  
 8.9' S. & 27.5' W. OF THE NW COR., LOT  
 22, BLOCK 1, QUAIL CROSSING ADDITION,  
 PHASE 2, 22.3' EAST OF @ N. 159TH ST. E.  
 ELEV. = 1370.15 (NAVD88)

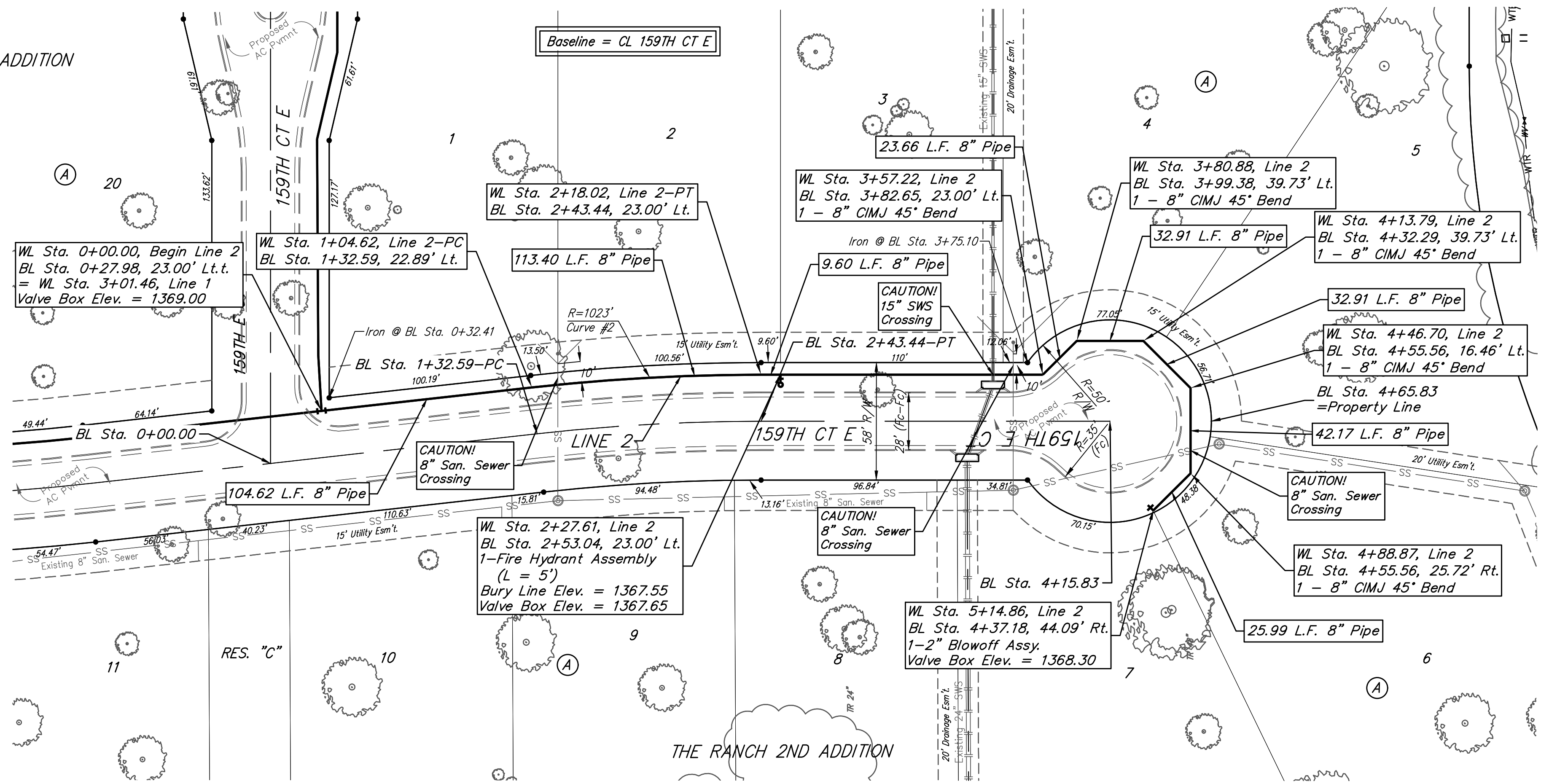
#2: "X" CUT CHISELED ON CURB INLET,  
 13.2' S. & 60.1' E. OF THE NE COR., LOT  
 2, BLOCK A, THE RANCH 2ND ADDITION,  
 24.9' WEST OF @ N. 159TH ST. E.  
 ELEV. = 1369.05 (NAVD88)

THE RANCH 2ND ADDITION



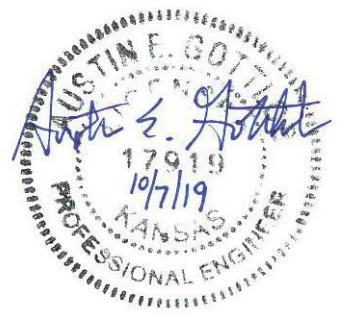
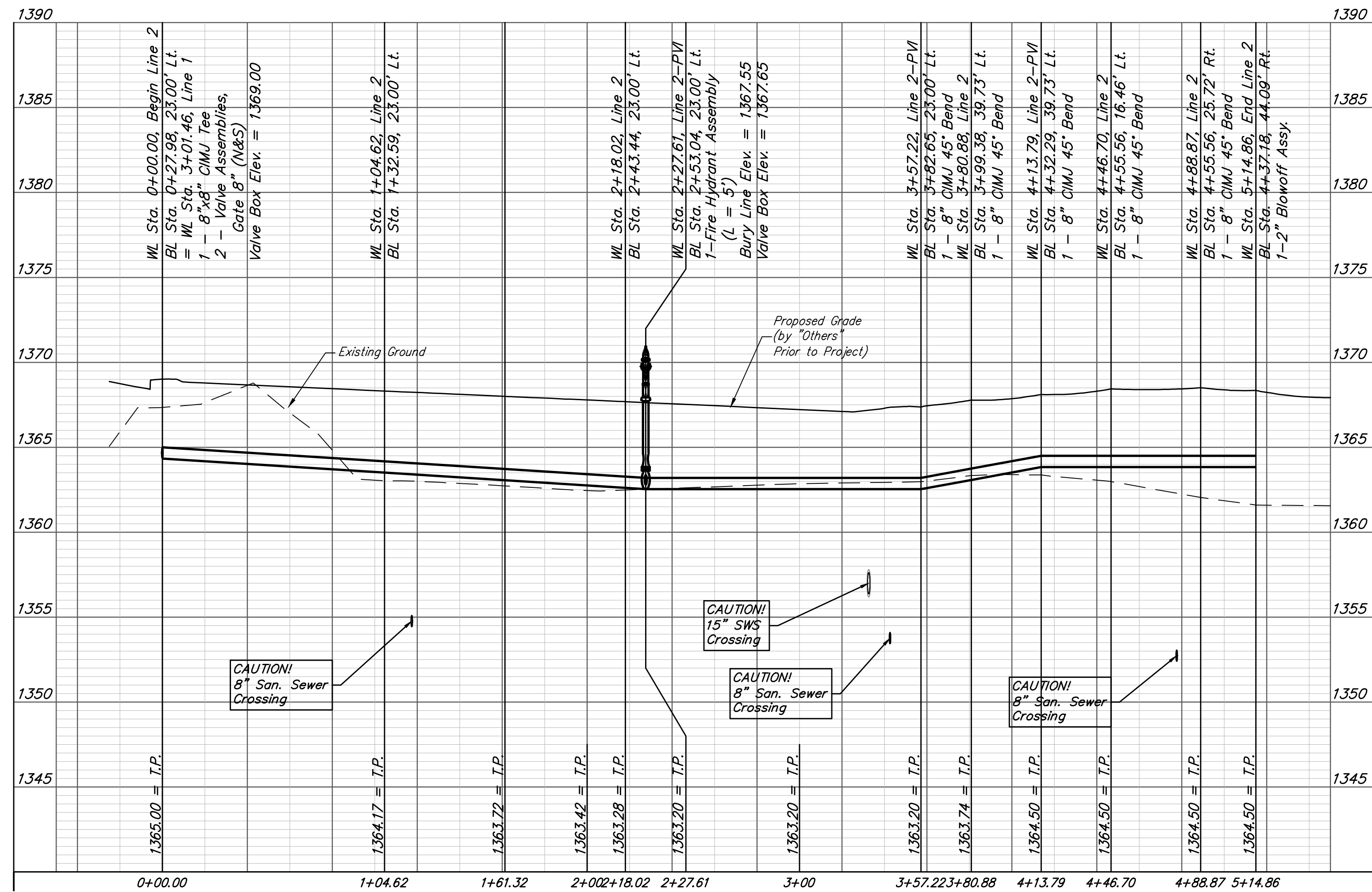
Existing trees which are in direct conflict with proposed new construction shall be removed by the Contractor ONLY with approval of the Engineer. Trees not in direct conflict with proposed new construction shall remain and be protected from damage. Cost shall be included in bid item "Site Clearing"

NOTE: Maintain 10 ft. of horizontal separation (outside dimension to outside dimension) between the water lines and sanitary sewer cleanout risers.



Curve #2  
 Curve Data Based on Waterline  
 Rad. = 1023' Delta = 62°10'4" Tangent = 56.76'  
 Arc = 113.40' L.C. = 113.34' Def./Ft. = 1.68019 Min.

Station	Arc	Chord 8' Left	Def.	Total Def.
1+04.62	-	-	0°00'00"	0°00'00"
1+25.00	20.38'	19.94'	0°34'15"	0°34'15"
1+50.00	25.00'	24.46'	0°42'00"	1°16'15"
1+75.00	25.00'	24.46'	0°42'00"	1°58'15"
2+00.00	25.00'	24.46'	0°42'00"	2°40'15"
2+18.02	18.02'	17.63'	0°30'17"	3°10'32"



**Baughman** The Ranch 2nd Addition  
**LINE 2**  
 Water Distribution System

Baughman Company, P.A. 315 Ellis St. Wichita, KS 67211 P 316-262-7271 F 316-262-0149  
 ENGINEERING | SURVEYING | PLANNING | LANDSCAPE ARCHITECTURE

PROJECT NUMBER 2019-015117	DESIGN AEG	DRAWN HW
REVISIONS:	APPROVED	DATE 10/07/19
	SCALE Noted	SHEET 6 OF 14

E:\Projects\The Ranch 2nd 1904\PH47\Engineering\Phase 1\WTR\WTR PLANS.dwg