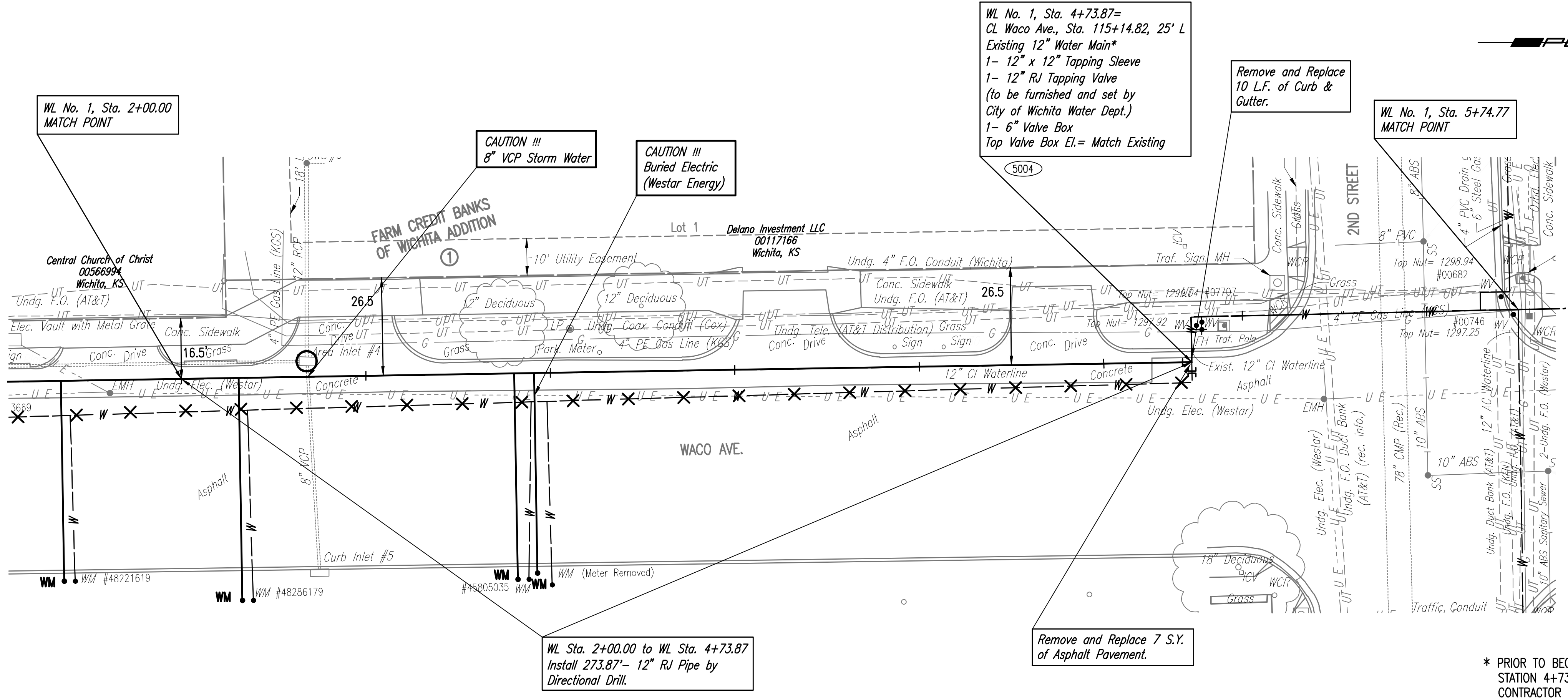
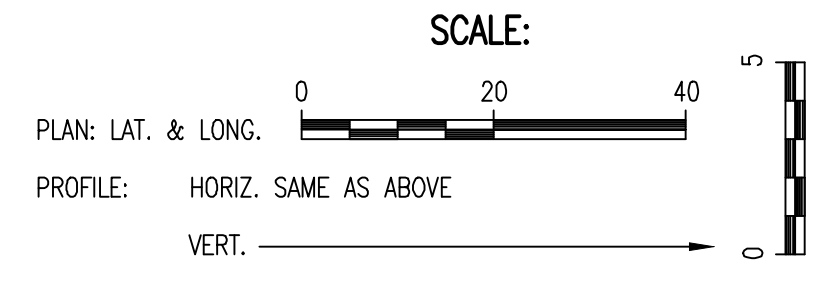




WATER DISTRIBUTION SYSTEM IMPROVEMENTS
 WACO AVENUE FROM 1ST TO CENTRAL
 GARY JANZEN, P.E. - CITY ENGINEER
 CITY OF WICHITA PROJECT NO. 448-90939

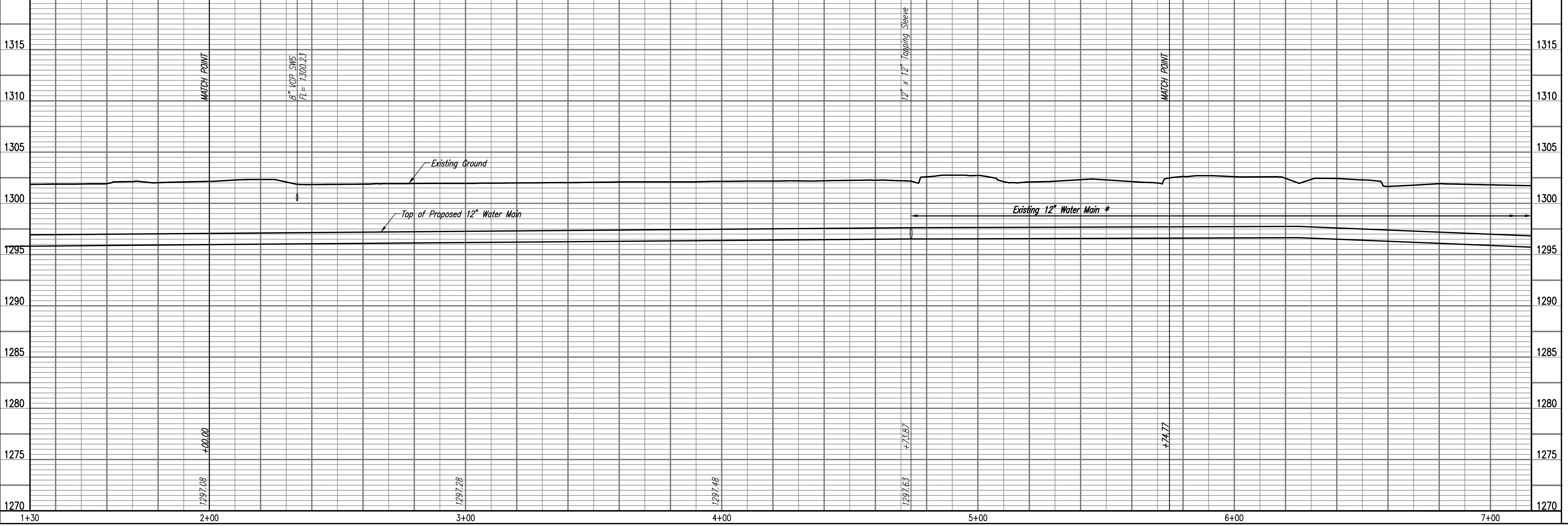


- 5000 = SEE SHEET NO. C-103 FOR WATERLINE AND STREET CL COORDINATES (TYP.)
- X = DENOTES WATERLINE TO BE ABANDONED IN PLACE.
- = DENOTES CAP/PLUG BY THE CONTRACTOR. (INCLUDES REMOVAL AND REPLACEMENT OF PAVEMENT)
- ⊙ = CLOSE VALVE, REMOVE VALVE BOX (SALVAGE TO CITY) (INCLUDES REMOVAL AND REPLACEMENT OF PAVEMENT)
- WM = METER SETTING REPLACEMENT, SEE SCHEDULE, SHEET NO. C-112.
- WM ** = EXISTING WATER METER NOT FOUND, CONTRACTOR TO VERIFY. METER SETTING REPLACEMENT, SEE SCHEDULE, SHEET NO. C-112.
- = SILT FENCE PROTECTION BARRIER
- = INLET PROTECTION BARRIER

* PRIOR TO BEGINNING CONSTRUCTION, THE CONTRACTOR SHALL EXCAVATE THE EXISTING 12" WATERLINE AT STATION 4+73.87 TO VERIFY PIPE SIZE, TYPE, FITTINGS, AND HORIZONTAL AND VERTICAL LOCATION. THE CONTRACTOR SHALL REPORT HIS FINDINGS TO THE ENGINEER SO THAT ANY NECESSARY PLAN MODIFICATIONS CAN BE MADE. ANY ADDITIONAL LABOR OR MATERIALS NECESSARY TO COMPLETE THE CONNECTION SHALL BE CONSIDERED SUBSIDIARY TO THE PROJECT.

WATERLINE NO. 1

Unless noted otherwise, elevations shown are top of pipe



Sheet 08 of 36 - 08/30/2019 4:52:50 PM by TREVOR KAUFMAN
 Proj. No. 448-90939 - 08/30/2019 4:57:55 PM CSN
 U:\Wichita-Civil\2018\187042\007\Main\Drawings\187042-007-C-105

Issue:	
JOB NO.	35-187042-007-0042
DATE	JUNE 2019
PM	JAG
DESIGNED BY	TBK
DRAWN BY	KTD
CHECKED BY	RWG

WATERLINE NO. 1