

J:\PROJECTS\2017\171010567\_COW\_STRYKER\_170567\_CAD\SHS\505\_OVAL\_NORTH\_PARKING\TITLE\_SHEET\_P17.DWG  
 PLOTTED: Wednesday, October 16, 2019 @ 10:33AM

# PAVING, LANDSCAPE, AND LIGHTING FOR

# STRYKER SPORTS

## PHASE 7: PAVING, LANDSCAPE, & LIGHTING

### PROJECT NO. 472-85380

AN ADDITION TO THE CITY OF WICHITA, SEDGWICK COUNTY, KANSAS  
 GARY JANZEN, P.E. - CITY ENGINEER

OCA NO. 707163



PAVING, LANDSCAPE, AND LIGHTING  
**STRYKER SPORTS**  
 WICHITA, KANSAS



©2019 MKEC Engineering  
 All Rights Reserved  
 www.mkec.com  
 These drawings and their contents, including, but not limited to, all concepts, designs, & ideas are the exclusive property of MKEC Engineering (MKEC), and may not be used or reproduced in any way without the express consent of MKEC.

#### TITLE SHEET

PROJECT NO.	1701010567	
DATE	OCT. 16, 2019	
SCALE	1" = 200'	
DESIGNED	RKO	
DRAWN	RKO	
CHECKED	MAB	
NO.	REVISION	DATE
0	IFC	10-16-19

SHEET NO.  
01 OF 16

#### CONTROL POINTS

- #101 5/8" REBAR WITH MKEC ALUMINUM CAP 1330' NORTH OF 29TH ST. N. AND GREENWICH RD. AND 65.5' WEST OF CENTERLINE GREENWICH RD. 15' WEST AND 4' SOUTH OF FENCE CORNER.  
NORTHING = 1706443.67 EASTING = 1686059.90  
ELEV. = 1400.41' NAVD 88
- #102 5/8" REBAR WITH MKEC ALUMINUM CAP 1330' NORTH OF 29TH ST N. AND 2635' WEST OF GREENWICH RD. 27'SOUTH AND 18' EAST OF FENCE CORNER.  
NORTHING = 1706375.63 EASTING = 1683490.77  
ELEV. = 1393.09' NAVD 88
- #103 5/8" REBAR WITH MKEC ALUMINUM CAP 2630' WEST OF INTERSECTION 29TH ST. N AND GREENWICH RD. 25' EAST AND 12' NORTH OF CHAIN LINK FENCE CORNER  
NORTHING = 1705093.61 EASTING = 1683522.84  
ELEV. = 1391.37' NAVD 88
- #104 5/8" REBAR WITH MKEC ALUMINUM CAP 2630' WEST AND 1340 SOUTH OF INTERSECTION 29TH ST. N AND GREENWICH RD. 22' NORTH AND 5' EAST OF CHAIN LINK FENCE CORNER.  
NORTHING = 1703750.96 EASTING = 1683522.34  
ELEV. = 1382.19' NAVD 88
- #105 5/8" REBAR WITH MKEC ALUMINUM CAP 900' WEST AND 1000' SOUTH OF INTERSECTION 29TH ST. N. AND GREENWICH RD. AT SOUTHEAST CORNER OF SPORT COMPLEX. 27' NORTH AND 9' WEST OF CHAIN LINK FENCE CORNER. 18' SOUTHEAST OF AREA STORM INLET.  
NORTHING = 1704039.07 EASTING = 1685269.60  
ELEV. = 1382.83' NAVD 88
- #106 PK NAIL IN CONCRETE SEAM. 1.5' NORTH OF MAIN EASTWEST SIDEWALK ON NORTH SIDE OF MAIN ENTRANCE TO SOCCER FIELDS COMPLEX BUILDING.  
NORTHING = 1704811.93 EASTING = 1684618.58  
ELEV. = 1390.17' NAVD 88

#### BENCHMARK

- BM #100 PLUS CUT ON EAST NOSE OF ISLAND, WEST SIDE OF INTERSECTION GREENWICH RD ON 29TH ST N.  
NORTHING = 1705129.39 EASTING = 1686099.44  
ELEV. 1390.24' NAVD 88
- BM #107 Plus Cut in top of curb at southeast side of north head of island that separates two parking lots 312' west of second gate entrance from 29th and Greenwich, 53' south of chain link fence.  
Northing = 1705046.74 Easting = 1684455.48  
Elev. = 1390.00' NAVD 88
- BM #108 PLUS CUT IN TOP OF CURB AT EAST SIDE OF ISLAND THAT IS JUST WEST OF SECOND GATE ENTRANCE FROM 29TH AND GREENWICH, 50' SOUTH OF CHAIN LINK FENCE.  
NORTHING = 1705046.44 EASTING = 1684781.911  
ELEV. = 1392.45' NAVD 88

#### SURVEY CONTROL

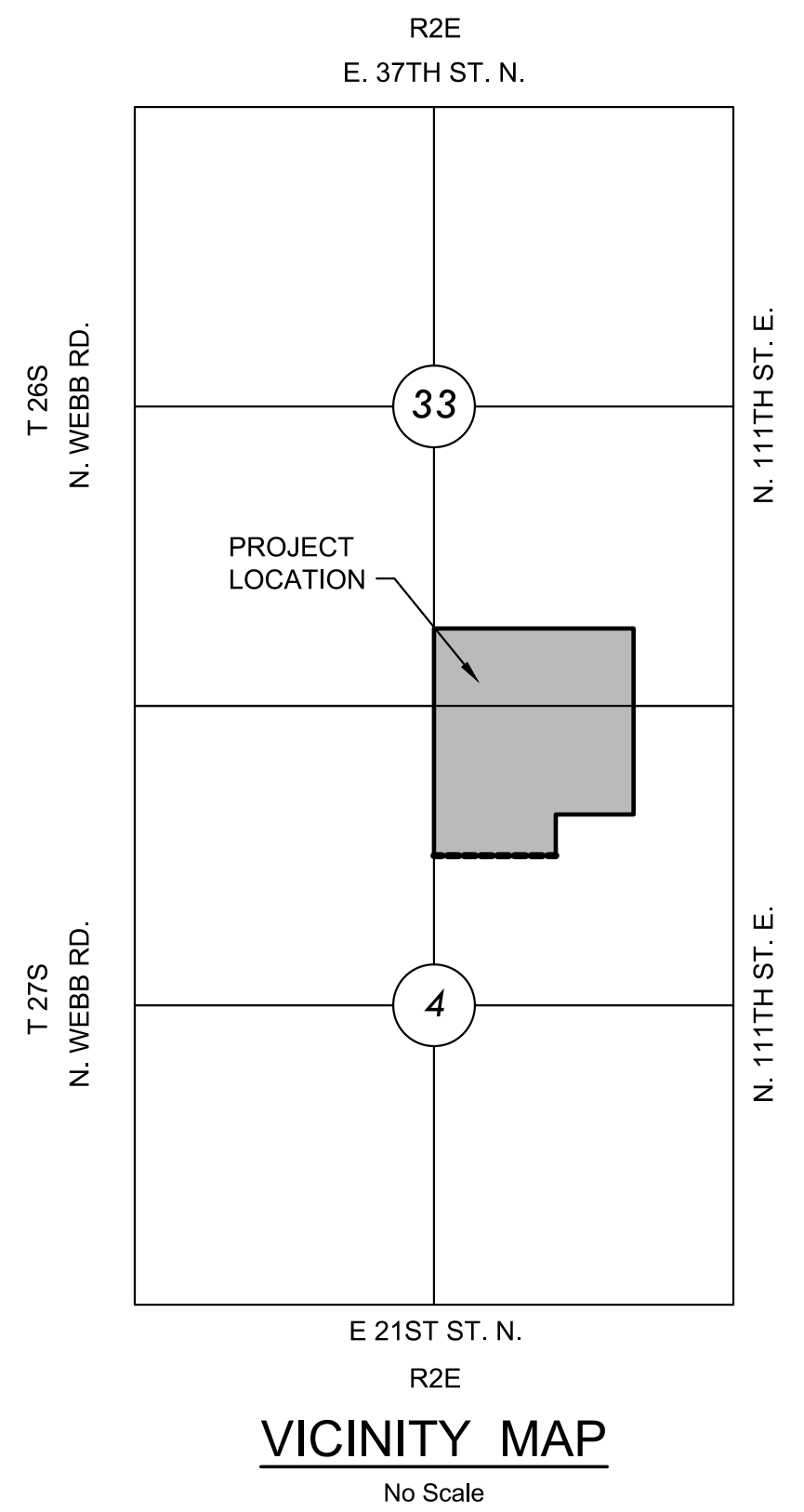
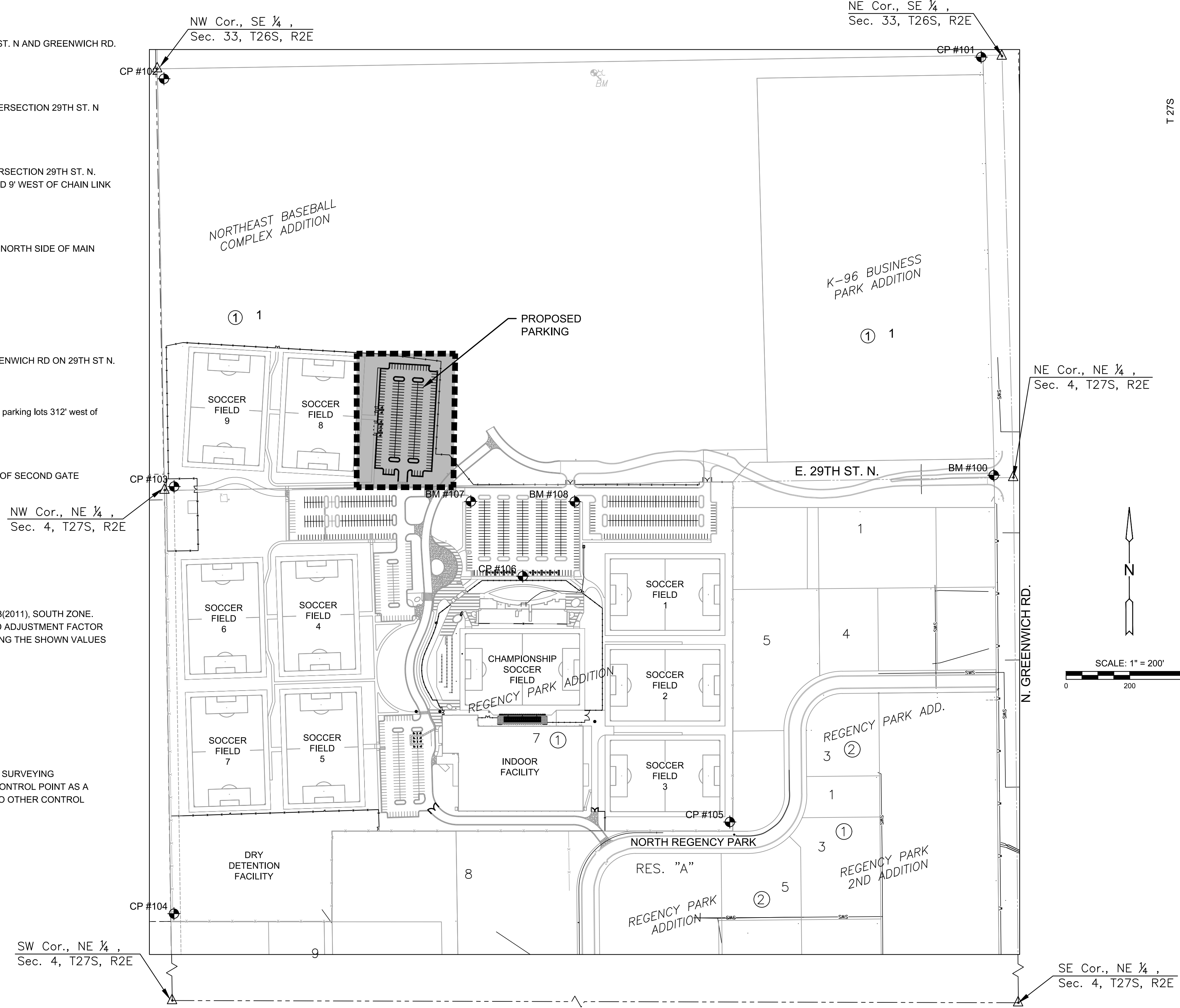
DATUM:  
THE HORIZONTAL DATUM IS BASED ON THE KANSAS COORDINATE SYSTEM OF 1983(2011), SOUTH ZONE. COORDINATES SHOWN HAVE BEEN MODIFIED TO THE GROUND USING A COMBINED ADJUSTMENT FACTOR OF 1.0001200144. STATE PLANE COORDINATES CAN BE CALCULATED BY MULTIPLYING THE SHOWN VALUES BY 0.99988.

ALL ELEVATIONS SHOWN ARE BASED ON THE NAVD 88 VERTICAL DATUM.

CONTROL POINTS (GND) AND BENCHMARKS

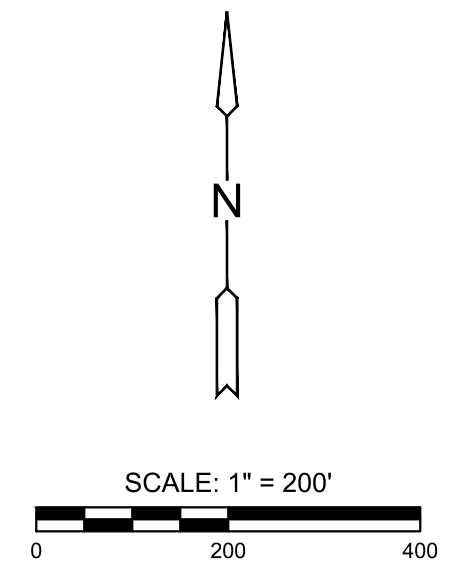
#### NOTE:

ALL CONTROL POINTS SHOWN HAVE ELEVATIONS ESTABLISHED USING STANDARD SURVEYING PROCEDURES AND CAN BE USED AS TEMPORARY BENCHMARKS. WHEN USING A CONTROL POINT AS A TEMPORARY BENCHMARK, IT IS RECOMMENDED THAT CROSS-CHECKS BE MADE TO OTHER CONTROL POINTS OR BENCHMARKS TO CONFIRM ELEVATIONS PRIOR TO USE.



#### SHEET INDEX

SHEET NO.	DESCRIPTION
01	TITLE SHEET
02	PAVING PLAN
03	GRADING PLAN
04-08	SITE & PAVING DETAILS
09-13	BMP DETAILS
14	LANDSCAPE PLAN AND DETAILS
15	ELECTRICAL SITE PLAN
16	ELECTRICAL DETAILS



#### REFERENCE PROJECTS

- PROJECT NO. 472-85380, PHASE 2  
 MASS GRADING  
 WATER LINES  
 SANITARY SEWER LINES  
 STORM SEWER  
 ELECTRICAL CONDUIT
- PROJECT NO. 472-85380, PHASE 6  
 PAVING  
 LANDSCAPE  
 UTILITIES