

J:\PROJECTS\2017\1701010567_COW_STRYKER_L170567 CAD\SHIT\505 CIVIL_NORTH PARKING\17567 ELEC DETAILS AND SCHEDULES.DWG
 PLOTTED: Wednesday, October 16, 2019 @ 11:02AM

LIGHT FIXTURE SCHEDULE

FIXT. LTR.	MANUFACTURER	CATALOG NUMBER	LAMPS		BALLASTS		FIXTURE VOLTAGE	FINISH	MOUNTING	FIXTURE VA	REMARKS/DESCRIPTION	SPECIFIC NOTES
			#	TYPE	#	TYPE						
SA	U.S. ARCHITECTURAL	RZR-LED-IV-FT-80LED-700ma-NW-240-RAL-9005-T	-	LED	-	-	240	BLACK	25" POLE	174	(2) LED AREA LIGHTS AT 180'	2

GENERAL NOTES (APPLY TO ALL LIGHTING):

A ALL LIGHTING FIXTURES SHALL BE RATED FOR LIGHTING POWER CIRCUIT VOLTAGE. CONTRACTOR MUST VERIFY ALL LOCATIONS.

B ELECTRICAL CONTRACTOR SHALL CHECK AND COORDINATE ALL LIGHTING FIXTURE CATALOG NUMBERS WITH THE INTENT OF FIXTURE DESCRIPTIONS, LISTED ACCESSORIES AND TYPE OF INSTALLATION.

C ELECTRICAL CONTRACTOR SHALL PROVIDE EACH LIGHTING FIXTURE COMPLETE WITH ALL INSTALLATION AND HANGING HARDWARE AS REQUIRED FOR A COMPLETE AND FINISHED INSTALLATION AT EACH FIXTURE LOCATION.

D ALL FIXTURES SHALL BE LISTED BY A NATIONALLY RECOGNIZED TESTING LABORATORY (NRTL) AND LABELED. ALL LIGHTING FIXTURES EXPOSED TO WEATHER, MOISTURE, OR OTHER ENVIRONMENTS SHALL BEAR THE APPLICABLE ENVIRONMENTAL OR APPLICATION LABEL.

E REFER TO APPLICABLE SECTIONS OF THE SPECIFICATIONS FOR ADDITIONAL REQUIREMENTS FOR LIGHTING FIXTURES.

F VERIFY ALL LIGHTING FIXTURE LOCATIONS AND FINISHES WITH ARCHITECT PRIOR TO INSTALLING. VERIFY VOLTAGE WITH ENGINEER PRIOR TO INSTALLING.

G ELECTRICAL CONTRACTOR TO FIELD ADJUST AIMING PATTERN OF EXTERIOR LIGHTS AT NIGHT SESSION. OWNER & ARCHITECT TO DETERMINE TIME AND DATE.

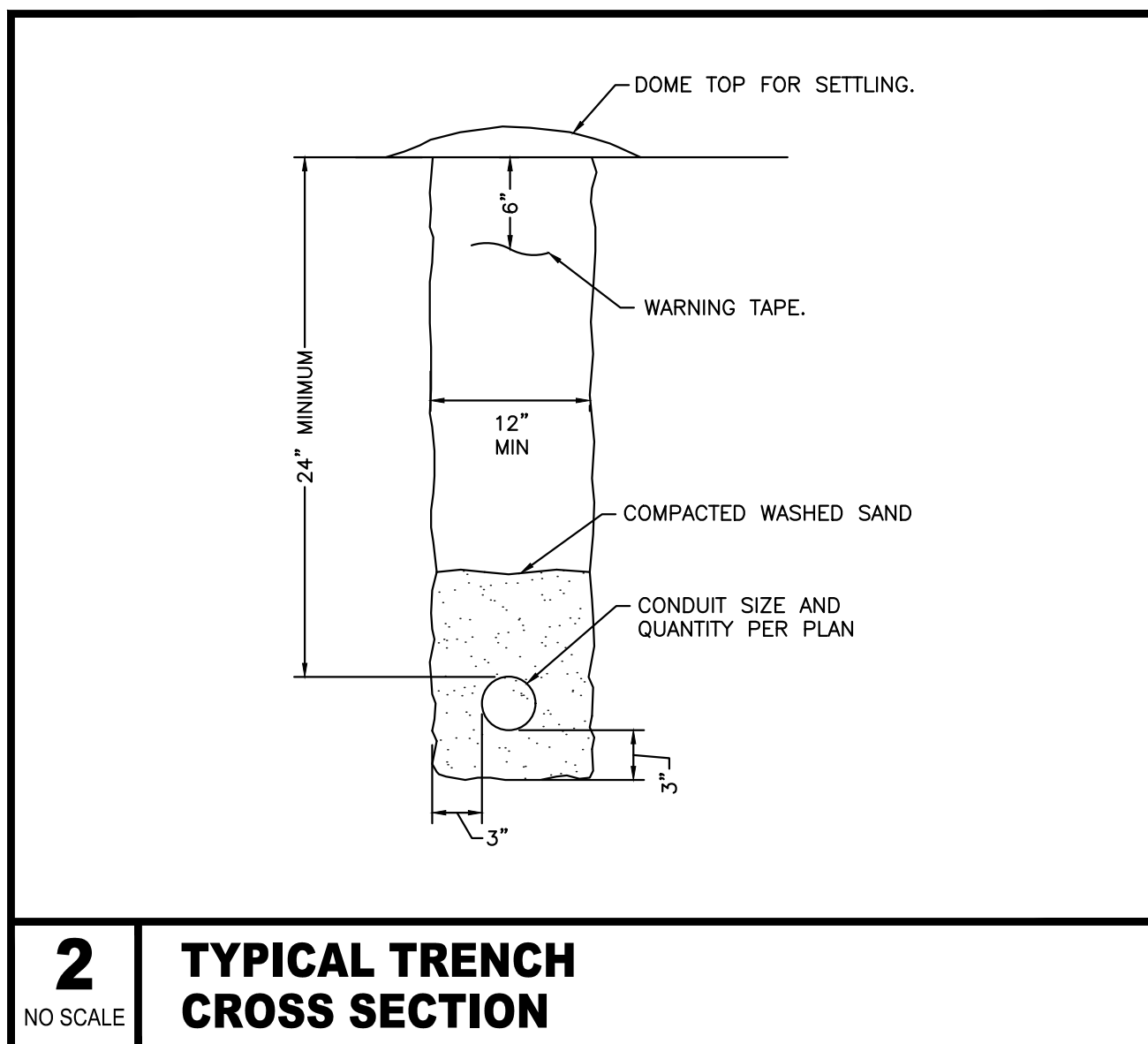
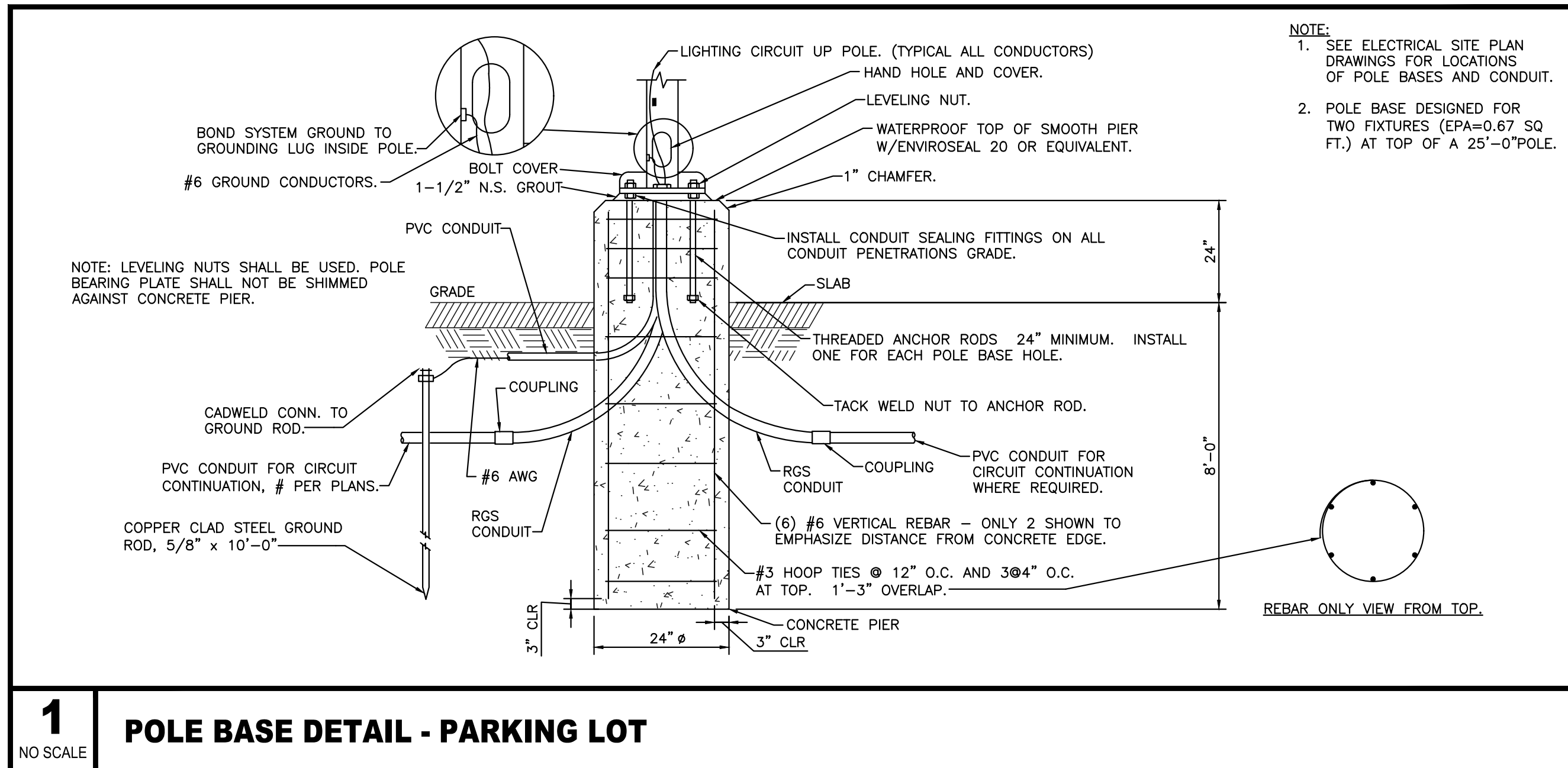
H INSTALLATION ELEVATION SHOWN IS FROM AFF OR AFG AS OBVIOUSLY APPLICABLE, TO CENTER OF OUTLET BOX, UNLESS OTHERWISE NOTED.

I FIXTURE SUBSTITUTIONS SHALL BE SUBMITTED IN WRITING TO THE ENGINEER FOR APPROVAL, 7 BUSINESS DAYS PRIOR TO BID. SUBMIT CUT SHEETS OF SPECIFIED ITEM ALONG WITH A CUT SHEET OF THE DESIRED SUBSTITUTION, WITH ALL DIFFERENCES NOTED. MAIL OR DELIVER CUT SHEETS INCLUDING PHOTOMETRIC INFORMATION TO: MKEC ENGINEERING CONSULTANTS, INC., 411 N. WEBB ROAD, WICHITA, KS. 67206, FAX TRANSMISSIONS ARE NOT ACCEPTABLE. SUBSTITUTIONS NOT SUBMITTED AS PER THIS PROCEDURE, WILL NOT BE CONSIDERED. THE ENGINEER'S DECISION OF APPROVAL OR DISAPPROVAL OF A PROPOSED SUBSTITUTE SHALL BE FINAL.

J SHOP DRAWINGS: DIFFERENCES SHALL BE SPECIFICALLY NOTED ON THE "SHOP DRAWINGS," THIS INCLUDES BUT IS NOT LIMITED TO: FIXTURE SUBSTITUTIONS, LAMPS, VOLTAGE, MOUNTING, PHYSICAL DIMENSIONS AND FINISHES. FAILURE TO COMPLY DOES NOT RELIEVE THE CONTRACTOR OF DESIGN DOCUMENT INTENTION AND WILL NOT BE REASON FOR ADDITIONAL REIMBURSEMENT. ADDITIONAL REQUIREMENTS MAY BE FOUND ELSEWHERE IN THE DRAWINGS OR SPECIFICATIONS.

SPECIFIC NOTES (AS REFERRED TO IN SCHEDULE):

(2) MOUNT ON KW INDUSTRIES POLE, RSP25-4.0-11-BLK.



PAVING, LANDSCAPE & UTILITIES FOR
STRYKER SPORTS
 WICHITA, KANSAS

©2019 MKEC Engineering All Rights Reserved www.mkec.com
 These drawings and their contents, including, but not limited to, all concepts, designs, & ideas are the exclusive property of MKEC Engineering (MKEC), and may not be used or reproduced in any way without the express consent of MKEC.

ELECTRICAL DETAILS

PROJECT NO.	1701010567
DATE	OCT. 16, 2019
SCALE	N.T.S.
DESIGNED	JRBW
DRAWN	JAC
CHECKED	JRBW

0	ISSUED FOR CONSTRUCTION	10-16-19
NO.	REVISION	DATE

