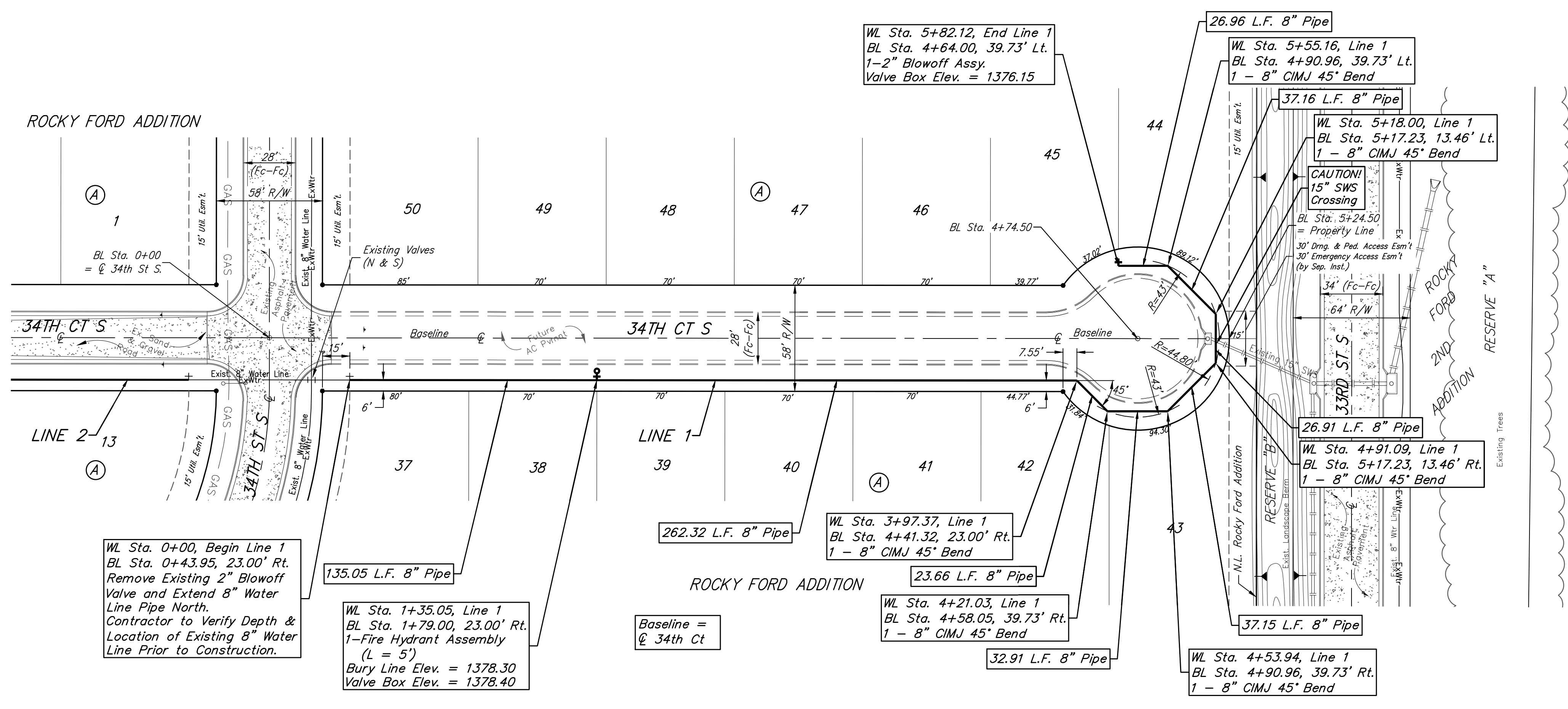


BENCHMARKS:
BM #1: "□" on Fence Footing under warning US Air Force Installation Sign West of Rock Road, 400' N. of W 1/2 Cor. Elev. = 1377.45 NAVD88
BM #2: Cross cut in top of curb West end of southwest curb return, 34th & 34th Ct. (Lots 1-13, Block A) Elev. = 1379.36 NAVD88
BM #3: Cross cut in top of curb North end of north curb return, 34th & 34th Ct. (Lots 22-36, Block A) Elev. = 1377.16 NAVD88



WL Sta. 0+00, Begin Line 1
 BL Sta. 0+43.95, 23.00' Rt.
 Remove Existing 2" Blowoff Valve and Extend 8" Water Line Pipe North.
 Contractor to Verify Depth & Location of Existing 8" Water Line Prior to Construction.

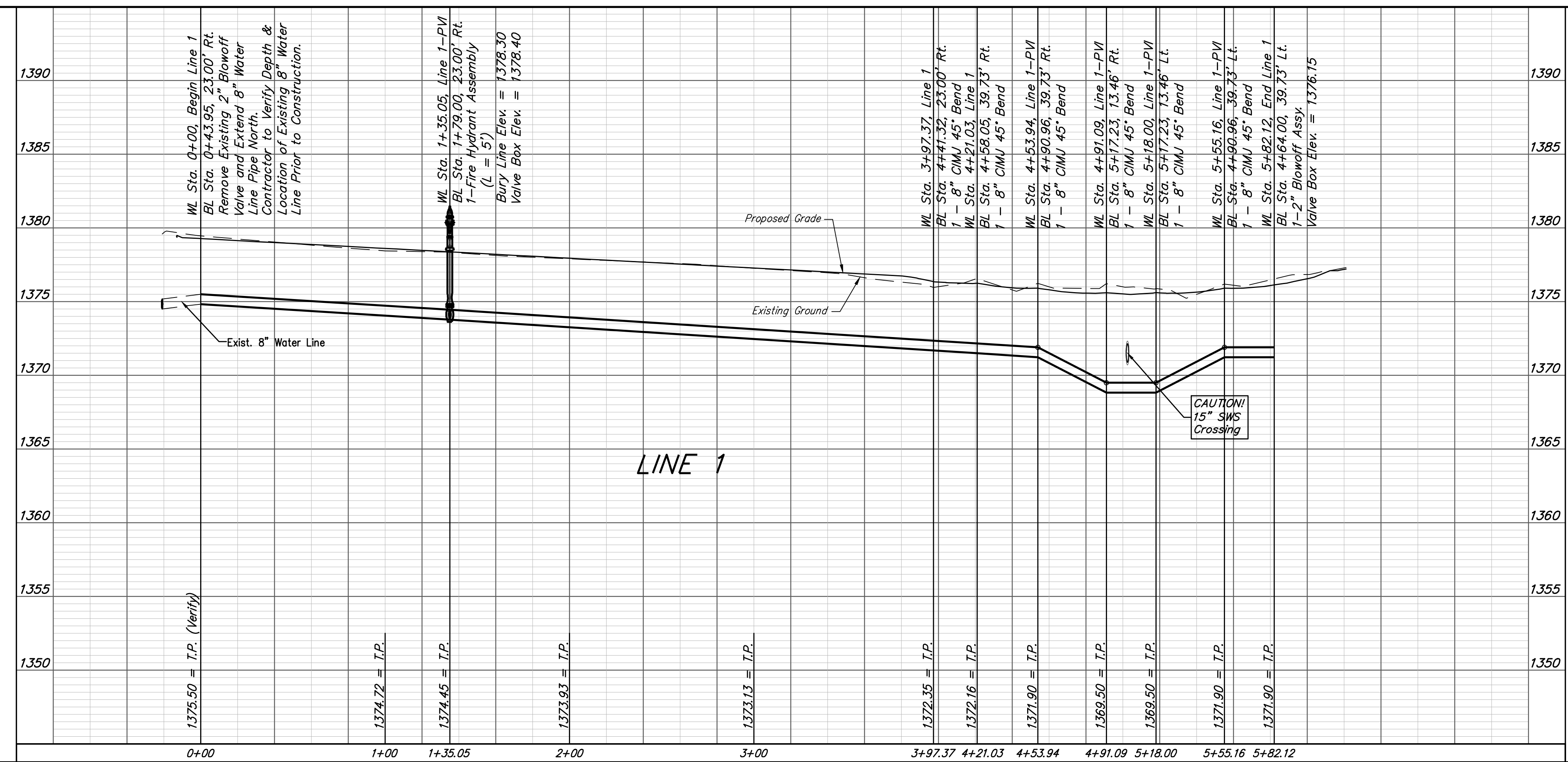
WL Sta. 1+35.05, Line 1
 BL Sta. 1+79.00, 23.00' Rt.
 1-Fire Hydrant Assembly (L = 5')
 Bury Line Elev. = 1378.30
 Valve Box Elev. = 1378.40

WL Sta. 3+97.37, Line 1
 BL Sta. 4+41.32, 23.00' Rt.
 1 - 8" CIMJ 45° Bend
 Bury Line Elev. = 1378.30
 Valve Box Elev. = 1378.40

WL Sta. 4+21.03, Line 1
 BL Sta. 4+58.05, 39.73' Rt.
 1 - 8" CIMJ 45° Bend

WL Sta. 4+91.09, Line 1
 BL Sta. 5+17.23, 13.46' Lt.
 1 - 8" CIMJ 45° Bend

WL Sta. 4+53.94, Line 1
 BL Sta. 4+90.96, 39.73' Rt.
 1 - 8" CIMJ 45° Bend



Rocky Ford Addition - Phase II

LINE 1
Water Distribution System

Baughman Company, P.A. 315 Ellis St. Wichita, KS 67211 P 316-262-7271 F 316-262-0149
ENGINEERING | SURVEYING | PLANNING | LANDSCAPE ARCHITECTURE

PROJECT NUMBER 448-90812	DESIGN AEG
DRAWN JAK	DATE 10/23/19
REVISIONS:	SCALE Noted
	SHEET

5 OF 14

C:\Projects\Rocky Ford Addition_1606P207\Engineering\Phase 2\Wtr 1906E207\WTR PLANS.dwg

