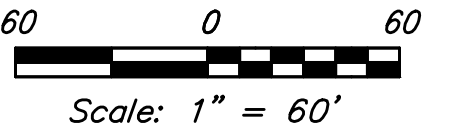


BENCHMARKS:
BM #1: "□" on Fence Footing under warning US Air Force Installation Sign West of Rock Road, 400' N. of W 1/2 Cor. Elev. = 1377.45 NAVD88

BM #2: Cross cut in top of curb West end of southwest curb return, 34th & 34th Ct. (Lots 1-13, Block A) Elev. = 1379.36 NAVD88

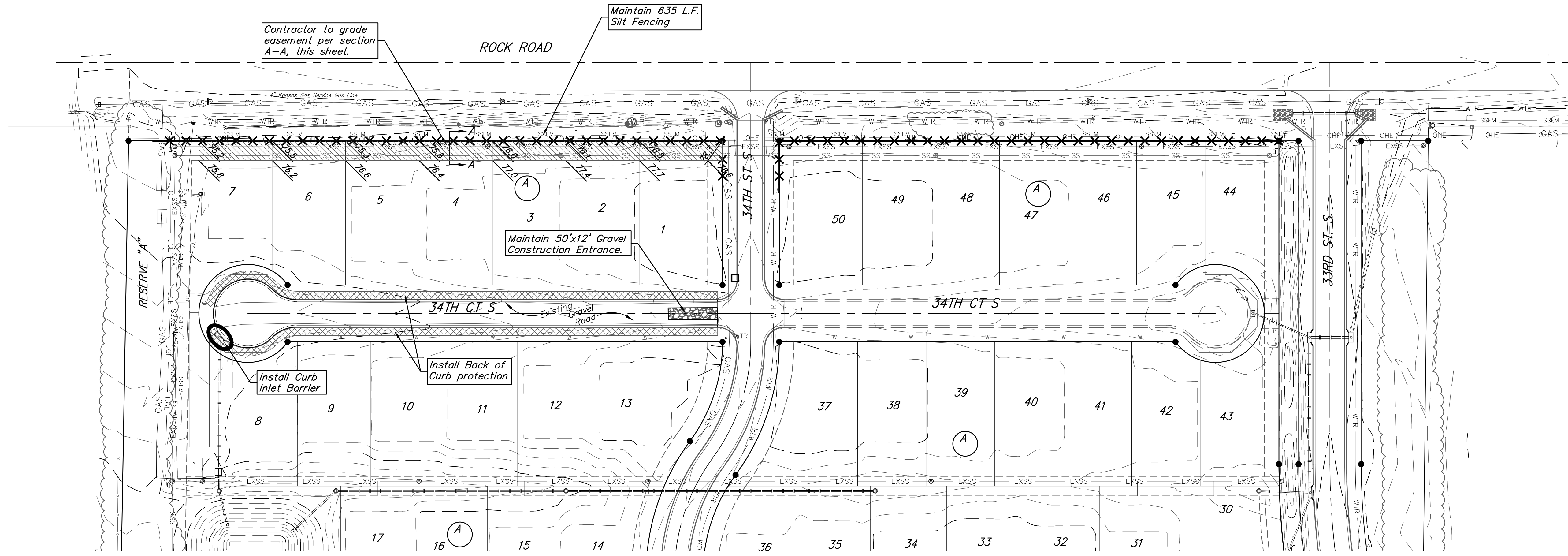
BM #3: Cross cut in top of curb North end of north curb return, 34th & 34th Ct. (Lots 22-36, Block A) Elev. = 1377.16 NAVD88



Existing Ground - - - - - 1364 - - - - -

EROSION CONTROL PLAN LEGEND

- CURB INLET PROTECTION
- SILT FENCING
- BACK OF CURB PROTECTION



= Easements To Be Graded

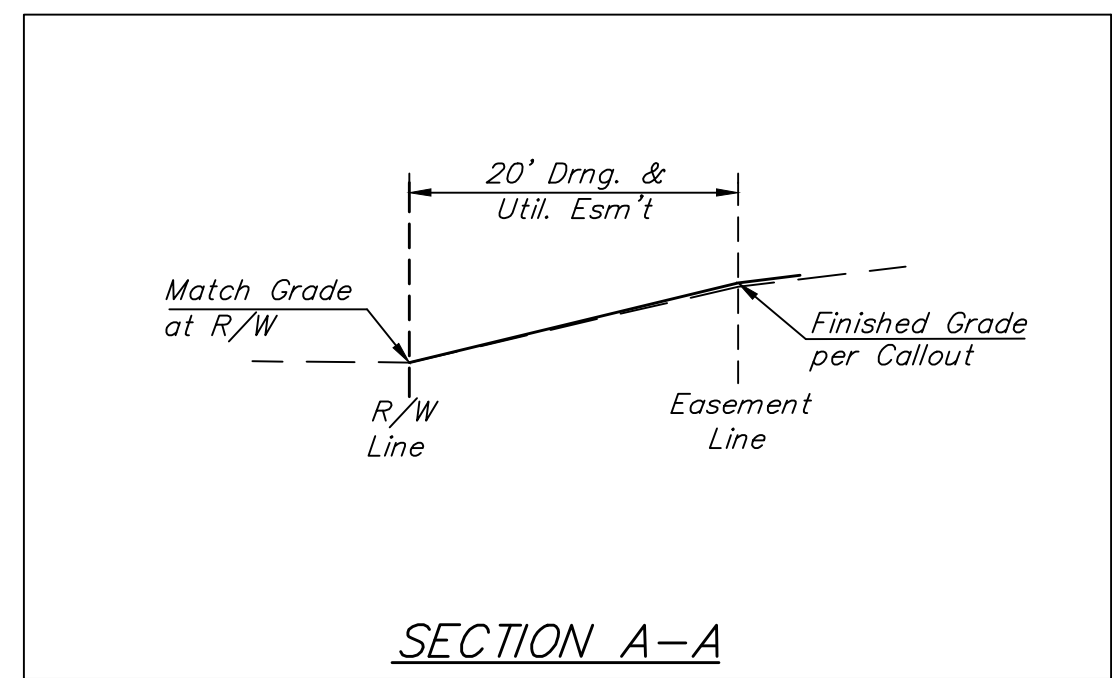
Approximate Easement Grading Quantities:
 (For Information Only)
 Excavation: 7 C.Y.
 Fill: 85 C.Y.

The Contractor shall grade the easements as shown to the elevations given on the easement grading plan.

The Contractor shall 'straight' grade the easements between the elevations given. Where a callout designates 'Match', the Contractor will grade to the existing ground elevation.

Excess excavation from easement grading and from sanitary sewer construction shall be placed on the lots as indicated to the elevations shown.

All cost to be included in the Lump Sum bid item "Easement Grading"



- NOTES:**
- Contractor shall make sure all erosion control is in place before project is accepted. This plan represents the minimum standard. Any additional erosion control measures shall be installed by the Contractor as needed.
 - Removal of Gravel Construction Entrance for pavement construction shall be included in bid item "Site Clearing"
 - This Plan Is Not To Be Used As A Comprehensive Grading Plan. All Spot Elevations Are Proposed & Subject To Change.
 - All areas disturbed during construction shall be seeded, mulched, and fertilized as per Cover Sheet General Notes.

EROSION CONTROL MEASURE	INSTALL	MAINTAIN
BACK OF CURB PROTECTION (LF)	1,061	0
CONSTRUCTION ENTRANCE (EA)	0	1
CURB INLET BARRIER (EA)	1	0
SILT FENCE (LF)	0	635
MAINTAIN EROSION CONTROL BMP's (LS)	0	1

* ALL EXISTING BMPs INCLUDING CONSTRUCTION ENTRANCE, SEDIMENT BARRIERS, SILT FENCE, CUT-OFF TRENCH, AND EROSION CONTROL MAT SHALL BE MAINTAINED AND REPAIRED IF NECESSARY.

Baughman Rocky Ford Addition - Phase II
EROSION CONTROL
 Street Improvements

Baughman Company, P.A. 315 Ellis St. Wichita, KS 67211 P 316-262-7271 F 316-262-0149
 ENGINEERING | SURVEYING | PLANNING | LANDSCAPE ARCHITECTURE

PROJECT NUMBER: 472-2019-085558
 DESIGN: AEG
 DRAWN: JAK
 APPROVED: [Signature]
 DATE: 10/23/19
 SCALE: Noted
 SHEET: 7 OF 16

C:\Projects\Rocky Ford Addition_16-06-P207\Engineering\Phase 2\Str_19-06-E298\STR PLANS.dwg