

GENERAL NOTES:

- The Contractor shall comply with all applicable safety regulations. All construction shall be completed following current City Standard Specifications and Special Provisions.
- Contractor will be required to provide notice to utility companies a minimum of seventy-two (72) hours prior to any excavation, as follows:

Kansas One-Call	687-2470
-----------------	----------

The Contractor must notify the following in case of an emergency:

AT&T	1-800-246-8464
Black Hills Energy	1-800-694-8989
City of Wichita Water & Sewer	1-316-219-8921
City of Wichita Stormwater	1-316-268-4090
City of Wichita Traffic	1-316-268-4034
Cox Communications	1-888-249-3530
Kansas Gas Service	1-888-482-4950
Westar Energy	1-800-544-4857
- Utility service lines, poles, etc. are to be adjusted as necessary by others prior to construction unless the plans specifically call for their adjustment by the Contractor or unless the plans specifically identify a utility to be adjusted by its owner during construction. Existing utilities and their location, as shown on the plans, represent the best information obtainable for design. The Contractor will be required to work around existing utilities within the right-of-way which do not conflict with proposed construction.
- Rubble from the removal of miscellaneous structures and excess excavation which is to be wasted shall be disposed of on sites to be provided by the Contractor. These sites shall be approved by the Engineer as to suitability, appearance and site location. Locations, in the opinion of the Engineer, that will leave an unsightly appearance will not be approved. All disposal sites must be approved by the Kansas Department of Health and Environment. Material either stockpiled or disposed of in a flood plain will require a Kansas State Board of Agriculture permit. Any material dumped in waters of the United States or wetlands is subject to U.S. Corps. of Engineers permitting regulations. Any material buried or stockpiled beyond approved construction limits will require additional archaeological investigations unless buried in a previously approved borrow location.
- Trees and shrubs in public right-of-way which are in direct conflict with proposed new construction shall be removed by the Contractor with the City Engineer's approval. Trees and shrubs which are not in direct conflict with proposed new construction shall be saved and protected from damage.
- The Contractor shall give all property owners and/or tenants of developed property abutting the construction of this project a minimum of ten (10) days notice prior to start of construction.
- The Contractor shall be responsible for preserving property irons. The Contractor will be required to re-establish any property irons which are damaged or destroyed by his construction operations. Such irons shall be re-established by a licensed land surveyor in accordance with state laws.
- If traffic will be impacted by construction, a traffic control plan must be submitted and approved by the City Traffic Engineer, Brian Coan at traffic@wichita.gov before construction can begin. The Contractor shall be responsible for all traffic control measures to facilitate construction. All construction zone markings and signage shall conform to the latest version of Manual on Uniform Traffic Control Devices (MUTCD) as published by the US Dept. of Transportation, Federal Highway Administration. All costs associated with construction markings and signage shall be the Contractors responsibility.
- All elevations shown are NAVD88.
- All areas disturbed during construction that will not be under proposed pavement shall be restored to match existing conditions.
- The Contractor shall protect from damage and support existing utilities through construction as approved by the utility owner and the Engineer at the contractor's expense.
- All existing and proposed erosion control measures including silt fencing, erosion control mat, straw bales, inlet barriers, and const. entrance shall be maintained throughout construction by the contractor and until project is accepted by the City of Wichita. The on-site engineer shall complete weekly reports on the status of erosion control measures. The contractor shall be required to comply with maintenance and/or replacement of erosion control measures as determined by the on-site engineer until project is accepted by City of Wichita. Maintenance and/or replacement of erosion control measures to be paid by L.S. bid item "Maintain Existing BMPs".
- All excess excavation shall remain on-site and shall be stockpiled or spread at a location determined by the engineer.
- All stubs and capped pipes shall be located with green plastic tape in the same manner as risers.
- Connecting to Existing Manholes: Prior to laying sewer lines using existing stubs in existing manholes, the Contractor shall expose and verify the elevation, grade and alignment of existing stubs and notify the Engineer of any deviation from the plans. Where the stub is unusable due to elevation grade or alignment, the Contractor shall remove the stub and plug the hole, and reshape the existing manhole invert to provide smooth flow. Where connection to an existing manhole that does not have an existing stub, the Contractor shall core cut into existing manhole wall to make connection using approved water stop gasket, and reshape the existing manhole invert to provide smooth flow. The cost of connect to existing manholes is incidental to the project.
- Contractor shall limit the extent of trench open overnight and weekends to less than 50 feet.
- Contractor shall provide positive drainage away from all manhole covers.
- The Contractor shall prevent any construction debris from entering the existing sanitary sewer during construction.
- All areas disturbed during construction shall be seeded at 300 lbs./acre with Rye Grass immediately following construction in that area. Contractor shall prepare ground per City Specifications.
- A Geotechnical Report (GSI Project # 1773147) completed on January 19th, 2018, noted ground water at approximately 9' below existing grade.

Benchmarks

BENCHMARK #1
Chiseled mark on top of existing curb at East entrance, on East end of concrete island, Southeast corner of Lot 3, Wichita North West Medical Property.
Elev. = 1336.07 NAVD88

Benchmark #2:
Chiseled cross on high end of gutter on North curve North of catch basin on Southwest corner of Lot 2 in Wichita North West Medical Property.
Elev. = 1334.34 NAVD88

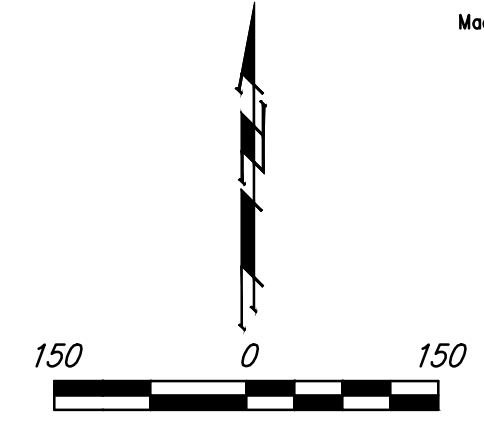
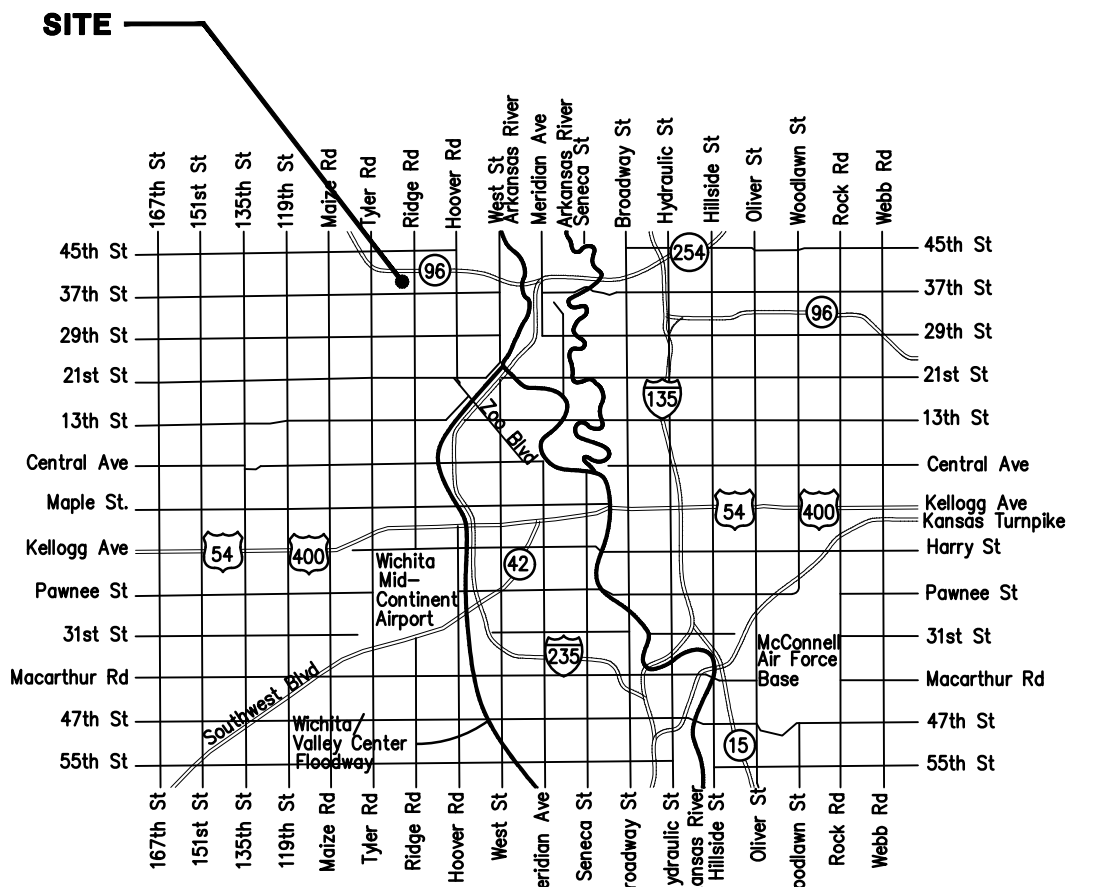
Benefit District 

Lateral 37, Main 19, Southwest Interceptor SANITARY SEWER IMPROVEMENTS

to serve Lots 1 & 2, Block A Northridge Plaza Addition

4007 N. Ridge Road
Wichita, KS

Gary Janzen, P.E. City Engineer
Project Number
468-85325
O.C.A Number
744482

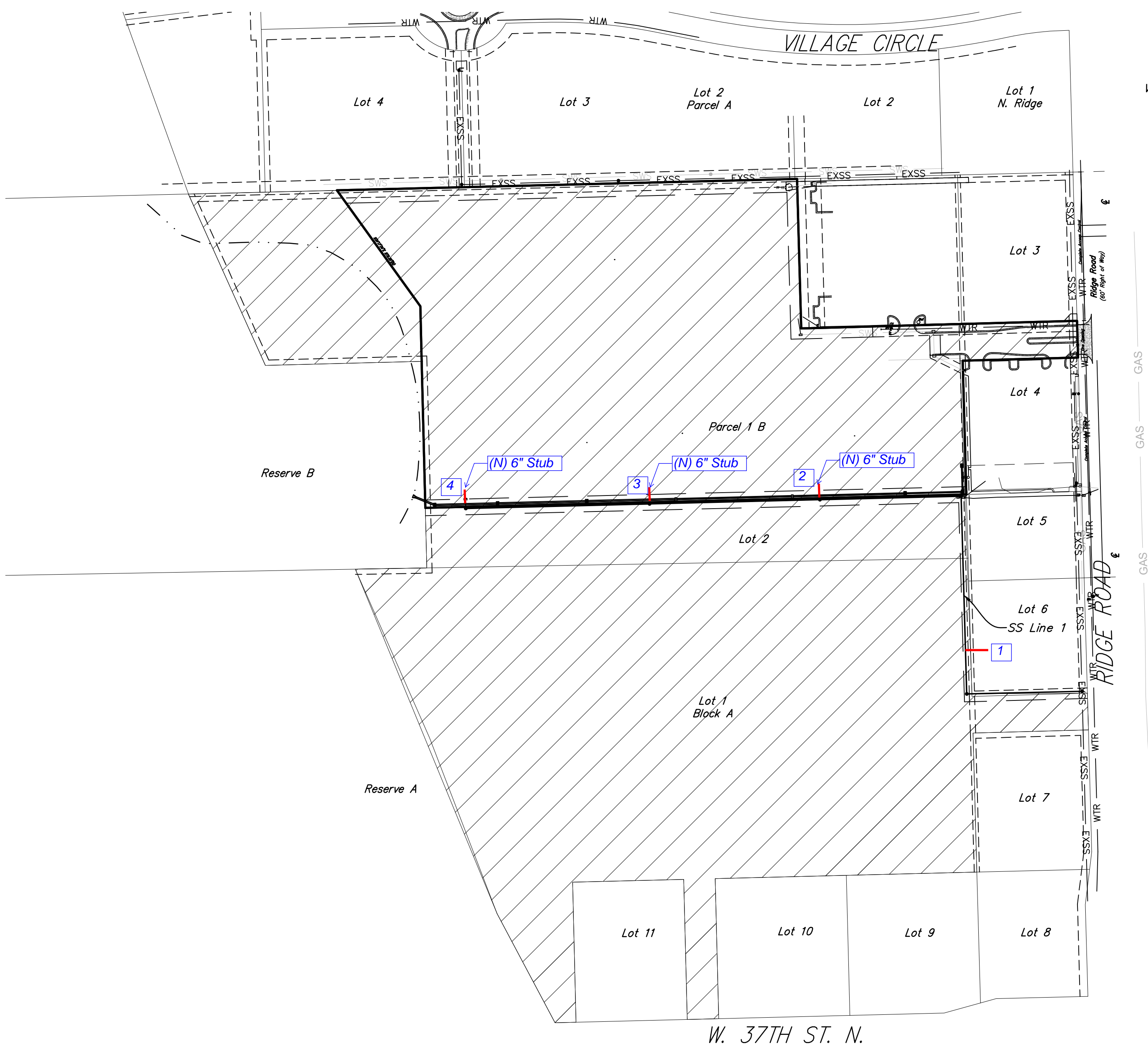


Vicinity Map

Sheet Index

Title Sheet	1
Line 1 Plan / Profile	2-4
Erosion Control Plan	5
Precast SS Manhole Detail	6
Manhole Frame & Cover Detail	7
Vertical Riser Detail	8
Erosion Control BMP Details	9-13
Coordinate Sheet	14
Copy of Plat	15

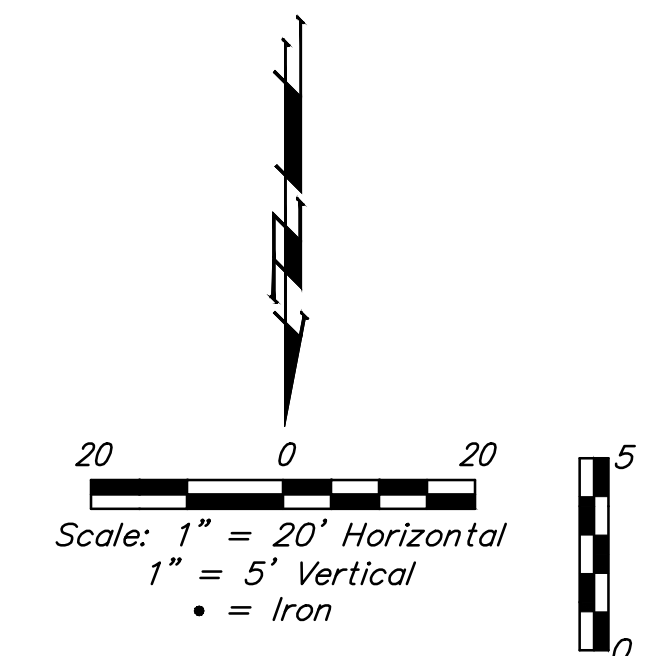
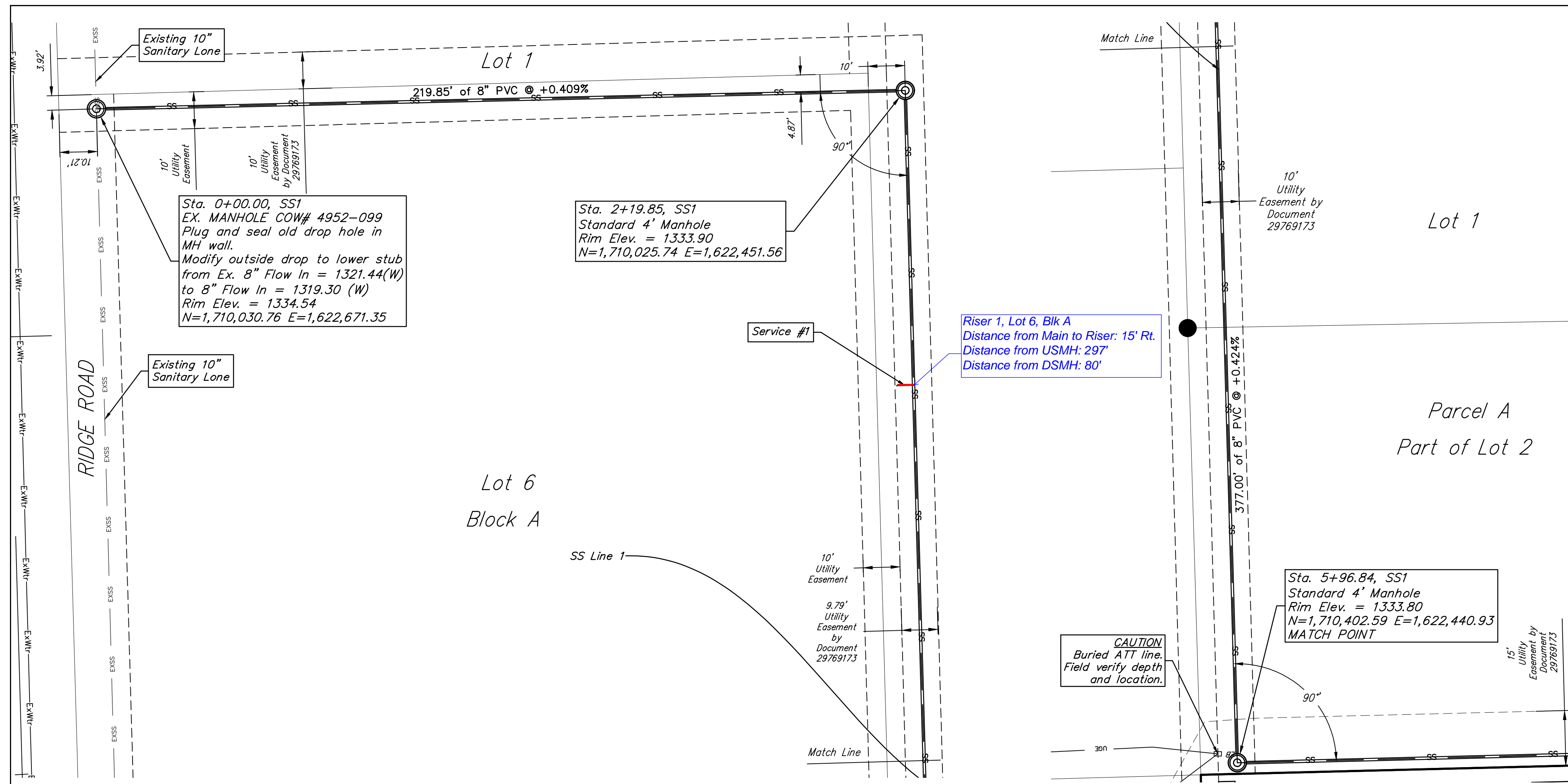
Nowak Construction - Contractor
B. Woods - City of Wichita, Field Project Engineer
L. Wilson - City of Wichita, Inspector
As-built
Stubs and Risers
Release Date for connection purposes only: 8/7/2019
pdf: 11/19/2019 apr



January 2019

BAUGHMAN COMPANY
315 Ellis St. Wichita, KS 67211 316-262-7271
BaughmanCo.com

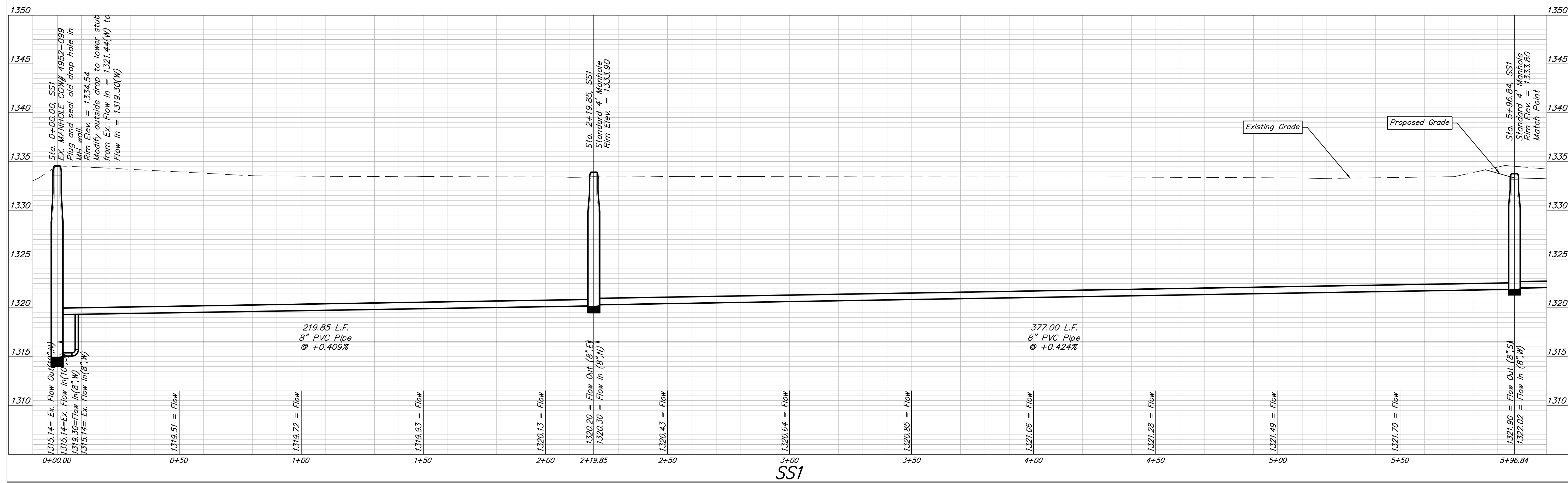
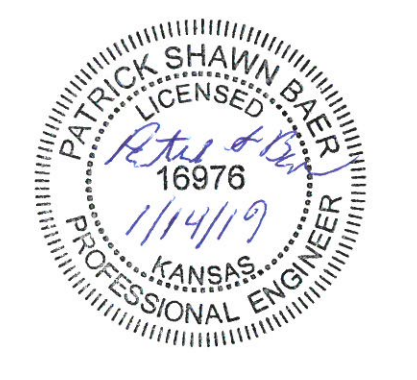
FILE: E:\PROJECTS\NORTHRIE PLAZA SEWER MAIN (18-05-0001)\ENGINEERING\VIEW PPS PETITION.DWG



SEWER SERVICE TABLE

NUMBER	TYPE	LOCATION				FOR INFORMATION ONLY	
		LOT NO.	BLOCK NO.	LINE NO.	STATION/DIRECTION	APPROXIMATE LENGTH 4" PIPE VERTICAL	HORIZONTAL
1	12" X 4" Tee	6	A	1	3+00.00/Lt.	12.3'	15'

Note: Vertical Riser Pipe shall be extended to 2' minimum above ground water elevation and 4' maximum below proposed ground elevation. Include Stubs at Manholes on applicable sheets.



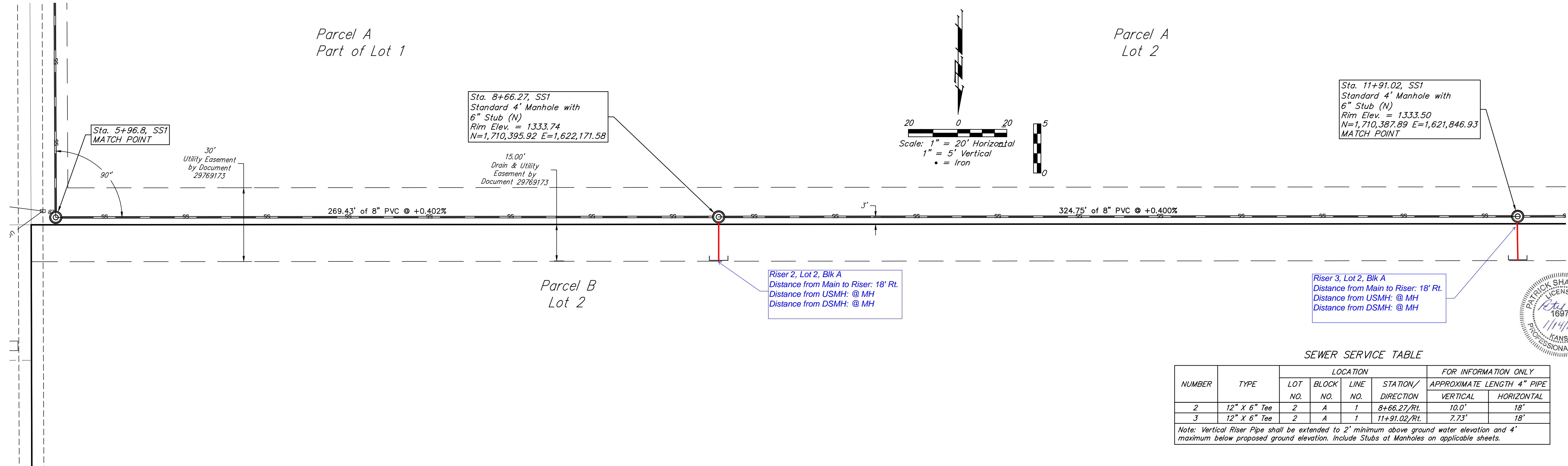
BAUGHMAN COMPANY
 315 Ellis St. • Topeka, KS 66606 • 765-262-7771
 www.baughmanco.com

Northridge Plaza Addition
SS1, 0+00 - 5+96.84
 SANITARY SEWER IMPROVEMENTS

SHEET **2**
 OF **15**

Parcel A
Part of Lot 1

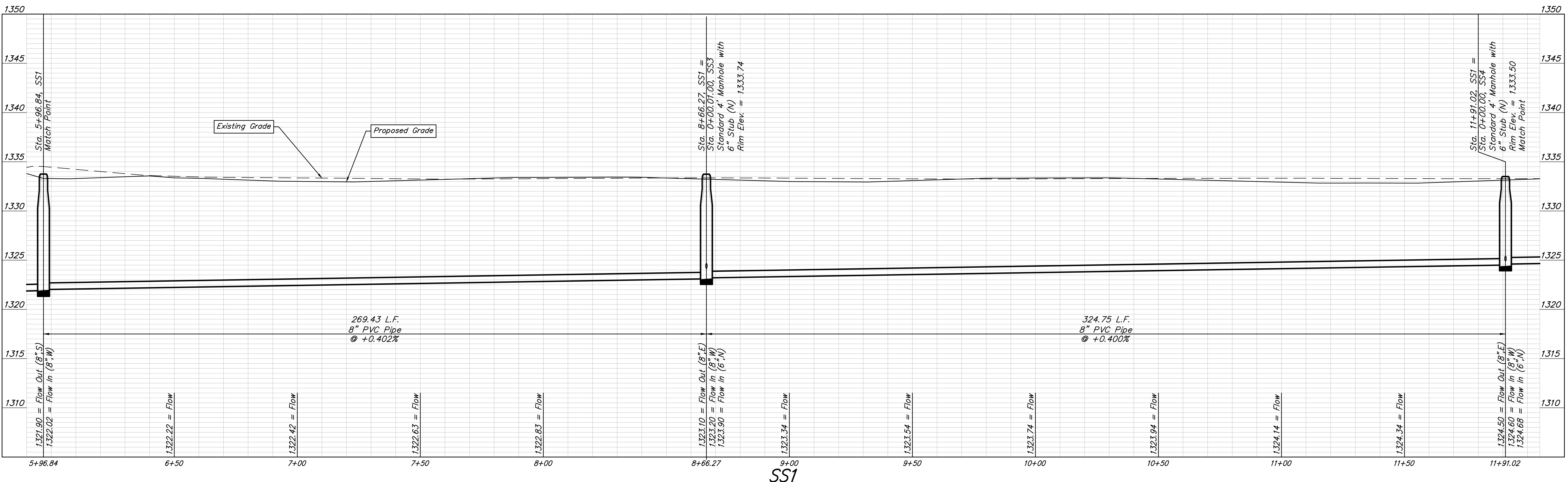
Parcel A
Lot 2



SEWER SERVICE TABLE

NUMBER	TYPE	LOCATION				FOR INFORMATION ONLY	
		LOT NO.	BLOCK NO.	LINE NO.	STATION/DIRECTION	APPROXIMATE LENGTH 4" PIPE VERTICAL	HORIZONTAL
2	12" X 6" Tee	2	A	1	8+66.27/Rt.	10.0'	18'
3	12" X 6" Tee	2	A	1	11+91.02/Rt.	7.73'	18'

Note: Vertical Riser Pipe shall be extended to 2' minimum above ground water elevation and 4' maximum below proposed ground elevation. Include Stubs at Manholes on applicable sheets.

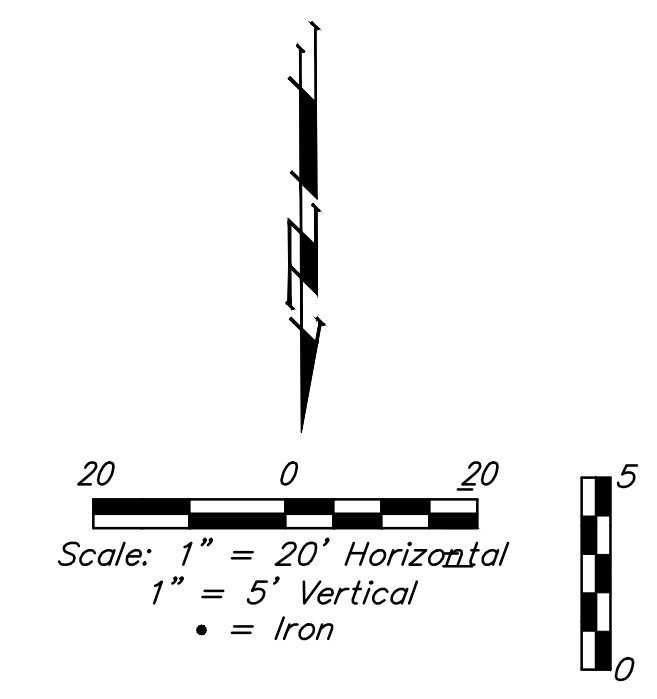
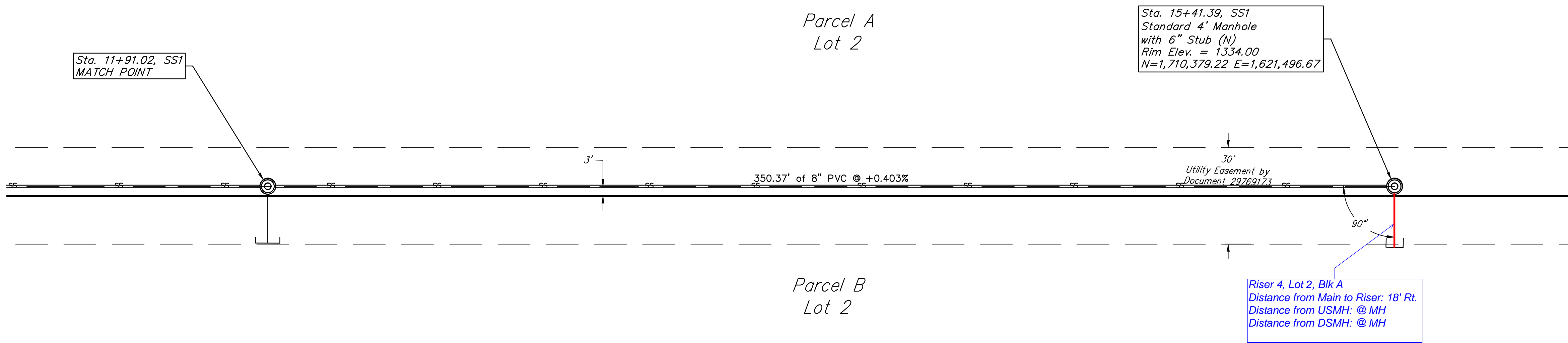


BAUGHMAN COMPANY
 315 Ellis St., Topeka, KS 66606
 Phone: 785-266-7771
 Fax: 785-266-7772
 www.baughmanco.com

SS1, 5+96.84-11+91.02
 SANITARY SEWER IMPROVEMENTS

Northridge Plaza Addition

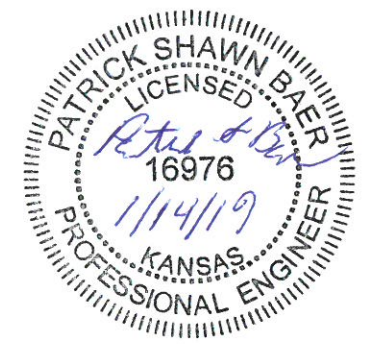
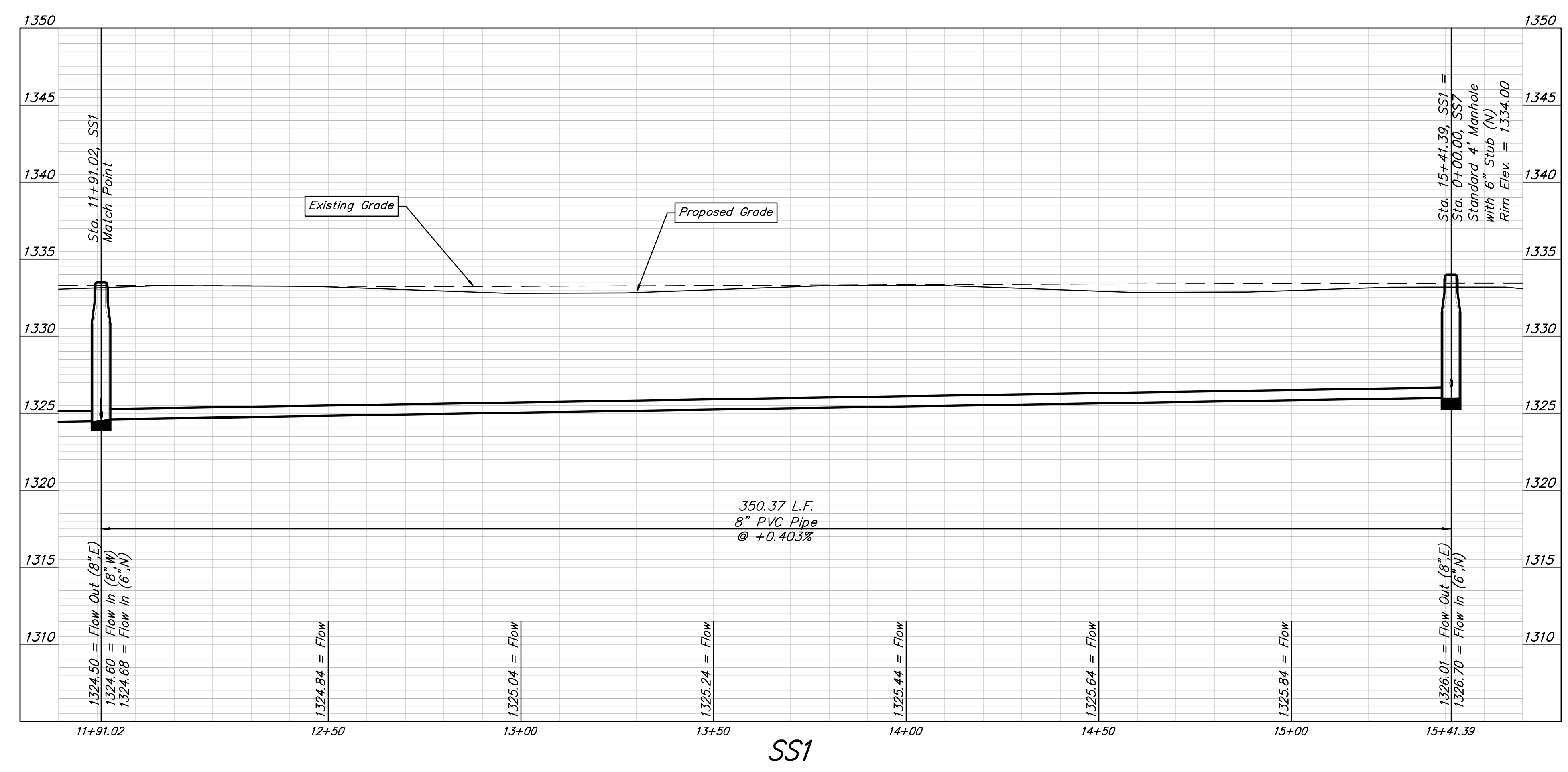
SHEET **3** OF **15**



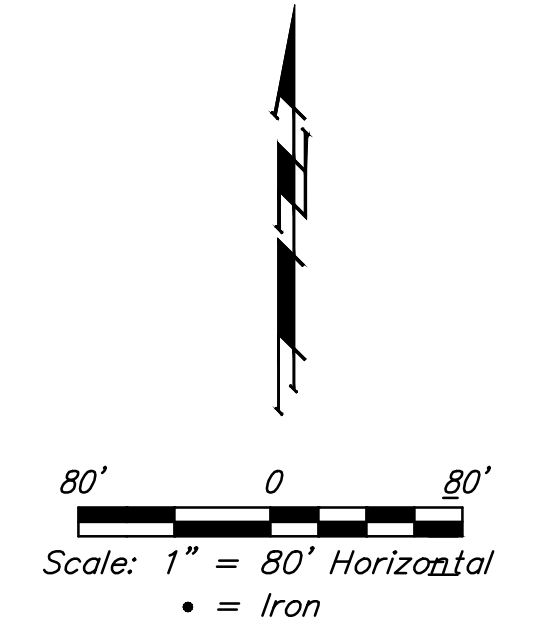
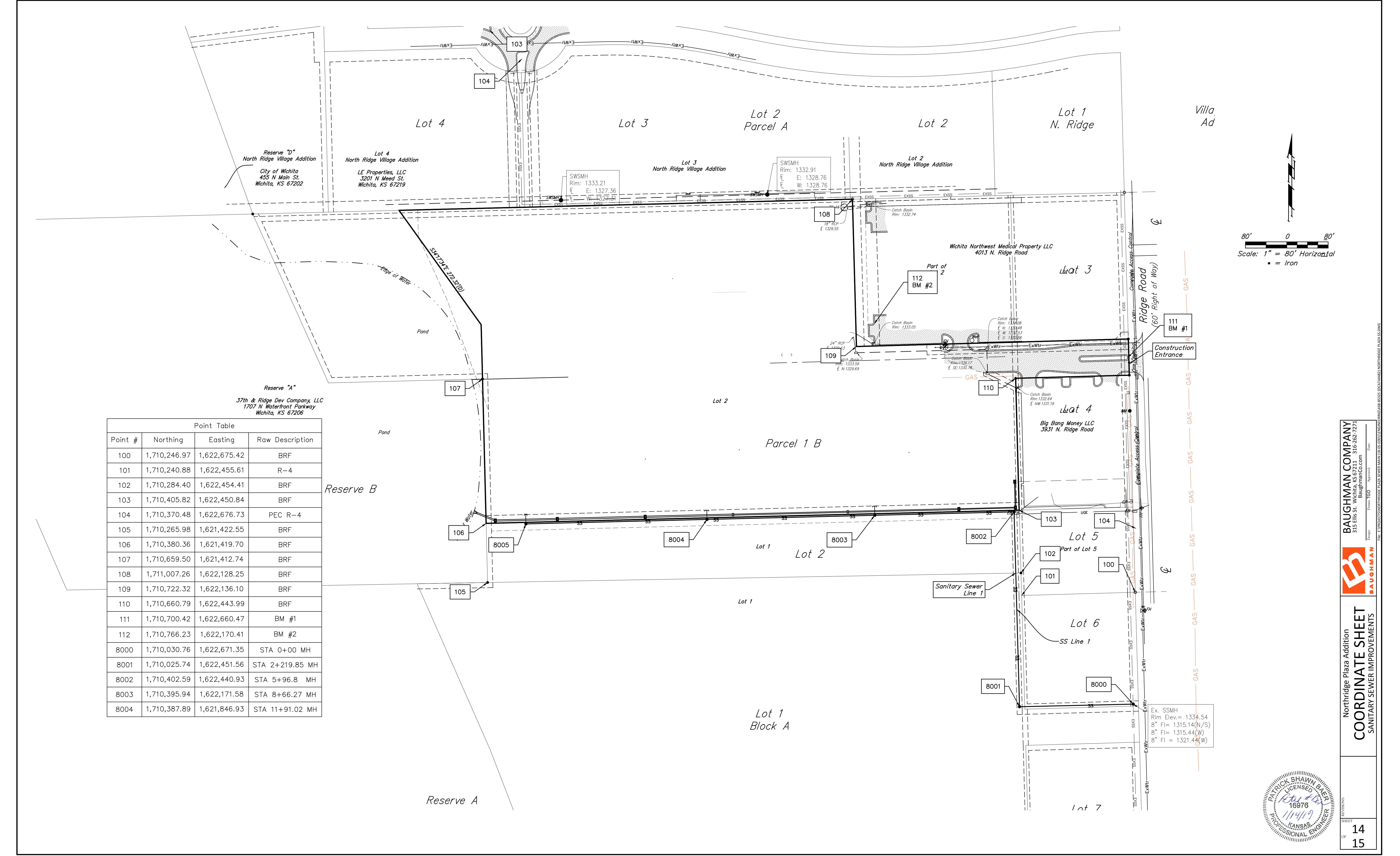
SEWER SERVICE TABLE

NUMBER	TYPE	LOCATION				FOR INFORMATION ONLY	
		LOT NO.	BLOCK NO.	LINE NO.	STATION/DIRECTION	APPROXIMATE LENGTH 4" PIPE VERTICAL	HORIZONTAL
4	12" X 6" Tee	2	A	1	15+41.39/Rt.	12.3'	18'

Note: Vertical Riser Pipe shall be extended to 2' minimum above ground water elevation and 4' maximum below proposed ground elevation. Include Stubs at Manholes on applicable sheets.



Point #	Northing	Easting	Raw Description
100	1,710,246.97	1,622,675.42	BRF
101	1,710,240.88	1,622,455.61	R-4
102	1,710,284.40	1,622,454.41	BRF
103	1,710,405.82	1,622,450.84	BRF
104	1,710,370.48	1,622,676.73	PEC R-4
105	1,710,265.98	1,621,422.55	BRF
106	1,710,380.36	1,621,419.70	BRF
107	1,710,659.50	1,621,412.74	BRF
108	1,711,007.26	1,622,128.25	BRF
109	1,710,722.32	1,622,136.10	BRF
110	1,710,660.79	1,622,443.99	BRF
111	1,710,700.42	1,622,660.47	BM #1
112	1,710,766.23	1,622,170.41	BM #2
8000	1,710,030.76	1,622,671.35	STA 0+00 MH
8001	1,710,025.74	1,622,451.56	STA 2+219.85 MH
8002	1,710,402.59	1,622,440.93	STA 5+96.8 MH
8003	1,710,395.94	1,622,171.58	STA 8+66.27 MH
8004	1,710,387.89	1,621,846.93	STA 11+91.02 MH



Ex. SSMH
Rim Elev. = 1334.54
8" FI = 1315.14(N/S)
8" FI = 1315.44(W)
8" FI = 1321.44(W)



Northridge Plaza Addition
COORDINATE SHEET
SANITARY SEWER IMPROVEMENTS



BAUGHMAN COMPANY
315 Ellis St. - Wichita, KS 67211 316-262-7274
BaughmanCo.com

File: E:\PROJECTS\NORTHBRIDGE PLAZA SANITARY SEWER IMPROVEMENTS\DWG\14-15.DWG
 User: PSHAW
 Date: 11/14/19