

# GENERAL NOTES:

1. Contractor will be required to provide notice to utility companies a minimum of seventy-two (72) hours prior to any excavation, as follows:

Kansas One-Call 687-2470

The Contractor must notify the following in case of an emergency:

- Cox Communications 262-4270
- Kansas Gas Service 1-888-482-4950
- Westar Energy 383-8650
- Aquila Energy 1-800-303-0357
- AT&T 268-2245
- City of Wichita Water Dept. 268-4563
- City of Wichita Sewer Maint. 268-4024
- City of Wichita Storm Sewer Maint. 268-4090
- City of Wichita Traffic Maint. 268-4034
- Conoco Phillips Pipeline Co. 1-877-267-2290
- Southern Star Pipeline Co. 529-6600
- Kinder-Morgan Pipeline Co. 1-888-844-5658

2. Utility service lines, poles, valve boxes, meters, and etcetera are to be adjusted as necessary by others prior to construction unless the plans specifically call for their adjustment by the Contractor or unless the plans specifically identify a utility to be adjusted by its owner during construction. Existing utilities and their location, as shown on the plans, represent the best information obtainable for design. The Contractor will be required to work around existing utilities within the right-of-way which do not conflict with proposed construction.

3. Rubble from the removal of miscellaneous structures and excess excavation which is to be wasted shall be disposed of on sites to be provided by the Contractor. These sites shall be approved by the Engineer as to suitability, appearance and site location. Locations, in the opinion of the Engineer, that will leave an unsightly appearance will not be approved. All disposal sites must be approved by the Kansas Department of Health and Environment. Material either stockpiled or disposed of in a flood plain would require a Kansas State Board of Agriculture permit. Any material dumped in waters of the United States or wetlands is subject to U.S. Corps of Engineers permitting regulations. Any material buried or stockpiled beyond approved construction limits would require additional archaeological investigations unless buried in a previously approved borrow location.

4. Trees and shrubs in public right-of-way which are in direct conflict with proposed new construction shall be removed by the Contractor with the Engineer's approval. Trees and shrubs which are not in direct conflict with proposed new construction shall be saved and protected from damage.

5. The Contractor shall give all property owners and/or tenants of developed property abutting the construction of this project a minimum of ten (10) days notice prior to start of construction.

6. The Contractor shall be responsible for preserving property irons. The Contractor will be required to re-establish any property irons which are damaged or destroyed by his construction operations. Such irons shall be re-established by a licensed land surveyor in accordance with state laws.

7. All existing and proposed erosion control measures including silt fencing, erosion control mat, straw bales, inlet barriers, and const. entrance shall be maintained throughout construction by the contractor and until project is accepted by the City of Wichita. The on-site engineer shall complete weekly reports on the status of erosion control measures. The contractor shall be required to comply with maintenance and/or replacement of erosion control measures as determined by the on-site engineer until project is accepted by City of Wichita. Maintenance and/or replacement of erosion control measures to be paid by L.S. bid item "Maintain Existing BMP's."

8. All excess excavation shall remain on-site and shall be stockpiled or spread at a location determined by the engineer.

9. The Contractor shall be responsible for maintaining continuous flow of sewage through construction. Contractor's proposed method for maintaining sewage flow shall be approved by the Engineer. Cost of maintaining flow of sewage through construction will not be paid for directly and this cost shall be considered as subsidiary to the other pay items of work.

10. Areas within Lot 54, Block 3 and Reserve "A", Willow Creek East 2nd Addition disturbed by construction shall be seeded and mulched as follows:  
 Seed -- Kansas Premium Fescue Blend; 8 lbs. PLS/1000 Sq. Ft.  
 Annual Rye grass; 3 lbs./1000 Sq. Ft.  
 Fertilizer -- 12-24-12 Ratio; 45 Lbs./Ac.  
 Mulch -- 2 Tons Prairie Hay/Ac.

All other disturbed areas within street R/W and lots are to be seeded as follows:  
 Seed -- Rye grass; 5 lbs./1000 Sq. Ft.

All costs associated with seeding including mobilization, preparation of ground, seeding, fertilizing, mulching, etc. shall be included in the L.S. bid item "Seeding".

An additional bid item for "Seeding, Temporary" as been included with the project and may be used at the discretion of the design engineer. Temporary seed shall be Annual Rye at 5 lbs./1000 Sq. Ft. unless otherwise noted and shall be planted when permanent seed or sod cannot be used due to seasonal limitations. If the "Seeding, Temporary" bid item is not used, 100% of the pay item will be deducted from the contract. All costs associated with temporary seeding including mobilization, preparation of ground, seeding, etc. shall be included in the L.S. bid item "Seeding, Temporary"

11. Trees and shrubs in the work area which are in direct conflict with proposed new construction shall be removed by the Contractor ONLY with the Developer or Baughman Company approval. Trees and shrubs which are not in direct conflict with proposed new construction shall be saved and protected from damage. If trimming is necessary, a chainsaw shall be used. Breaking limbs with equipment will not be allowed. An on-site pre-construction meeting will occur prior to any construction to discuss tree removal, tree protection, and tree trimming.

12. The Developer for this project is Paul Kelsey  
 716 N. 119th St. #112, Wichita, KS 67212  
 PH# (316)722-1077 email paul.kelsey@gmail.com

# SANITARY SEWER IMPROVEMENTS to serve WILLOW CREEK EAST 3RD ADDITION - PHASE I CITY OF WICHITA, KANSAS

Gary Janzen, P.E. City Engineer  
 Project Number 468-84554  
 OCA Number 744497

Dutton Construction - Contractor  
 K. Yale - City of Wichita, Field Project Engineer  
 Z. Regnier - City of Wichita, Inspector  
 As-built  
 Stubs and Risers  
 Release Date for connection purposes only: 11/22/2019  
 Final Acceptance Date: 1/29/2020  
 pdf: 11/25/2019 apr

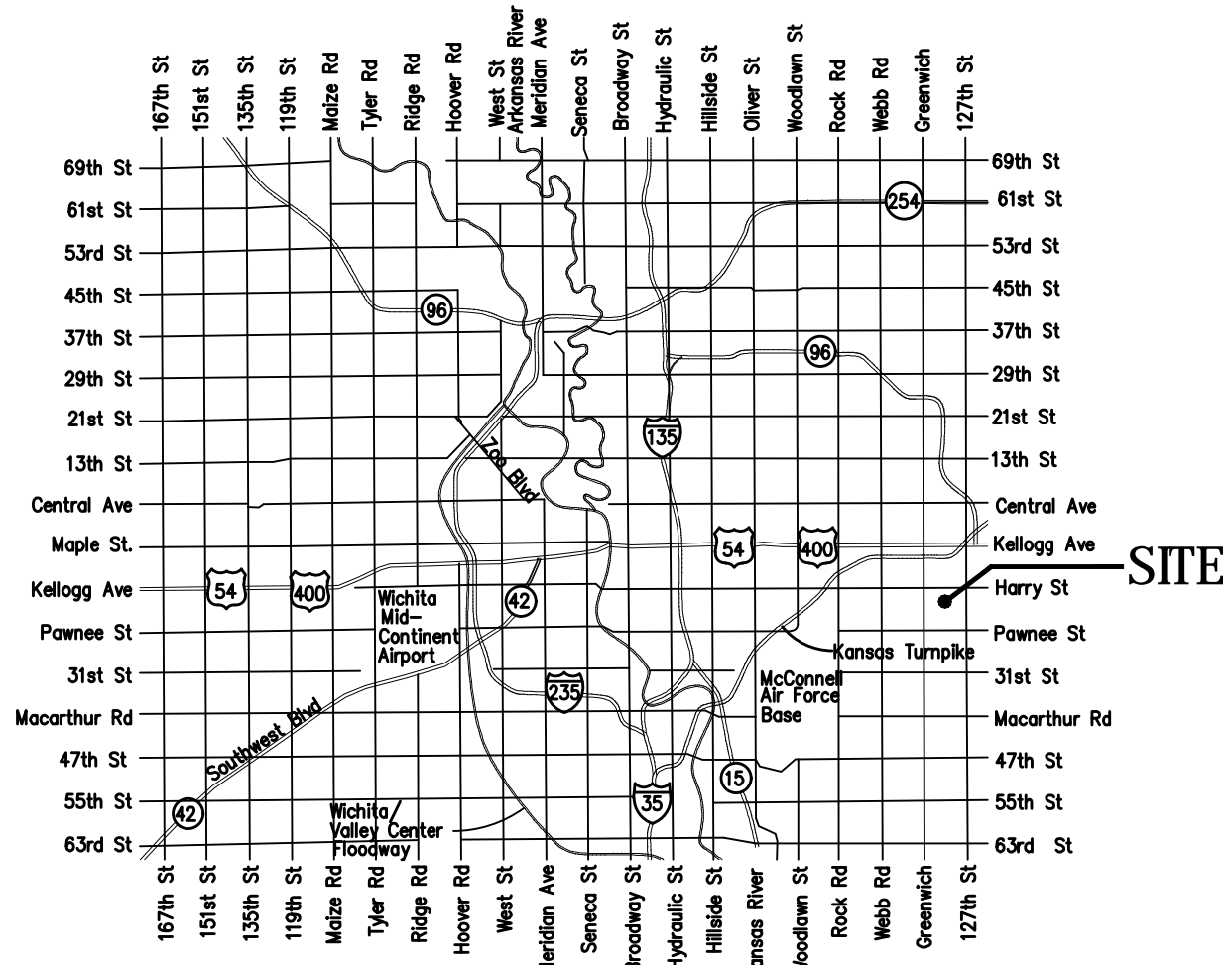
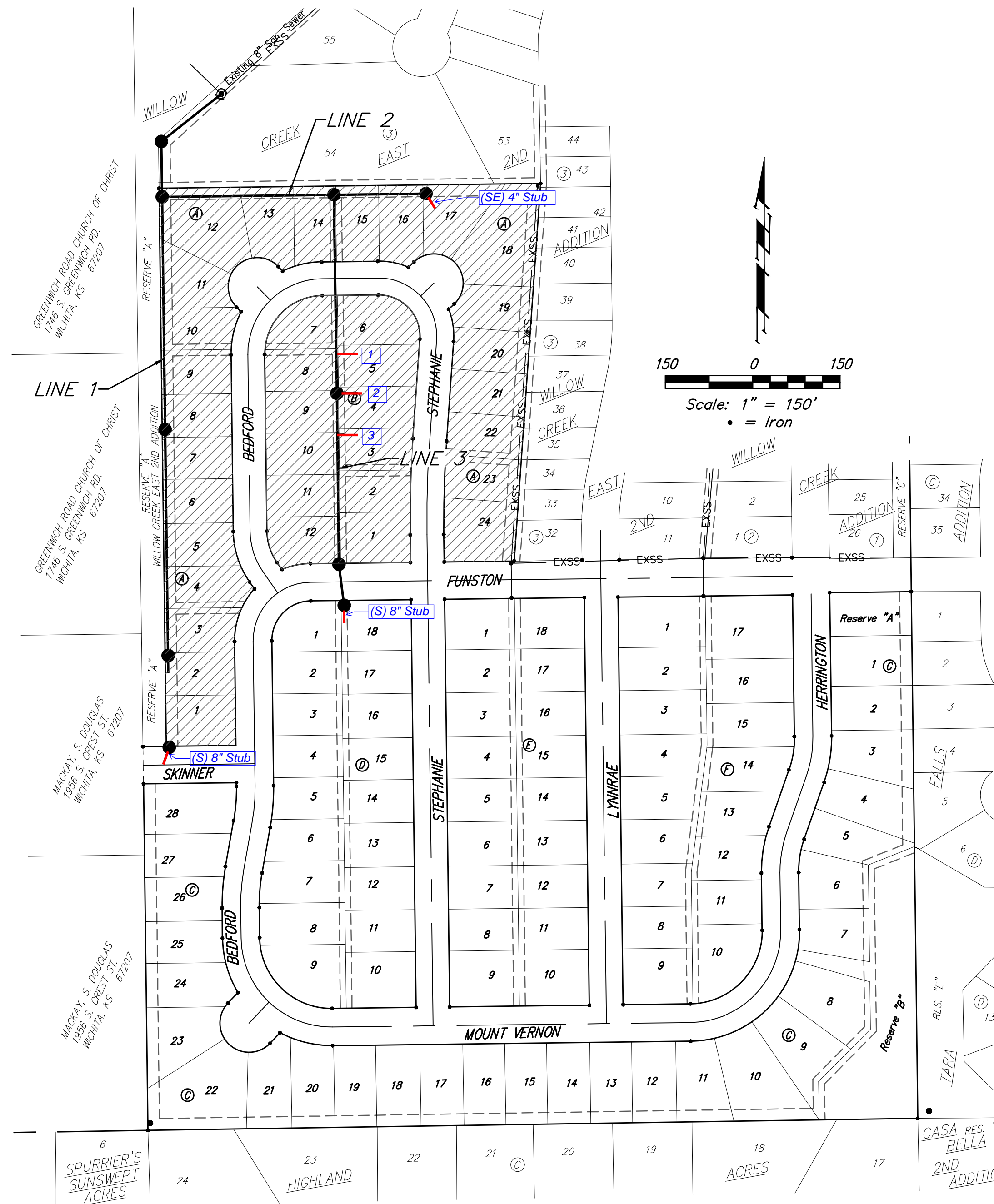
## BENCHMARKS

Brass benchmark disc in top of curb, east of wheelchair ramp NE cor. of Funston and Lynnrae Elev. = 1343.69 NAVD88

Brass benchmark disc in top of curb, north of wheelchair ramp NW cor. of Funston and Herrington Elev. = 1344.71 NAVD88

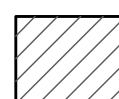
## SHEET INDEX

Title Sheet	1
Line 1	2
Line 2	3
Line 3	4
Erosion Control Plan	5
Erosion Control BMP Details	6-10
Standard Manhole Detail	11
Ring & Cover Detail	12
Vertical Riser Detail	13
Coordinate Sheet	14
Copy of Plat	15



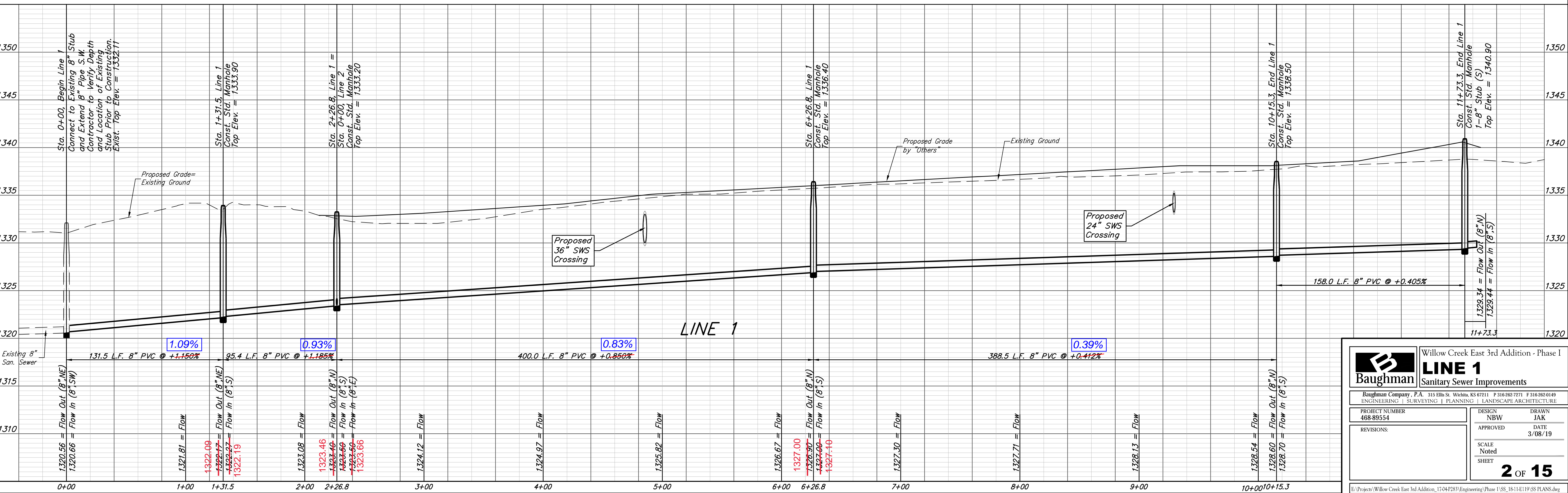
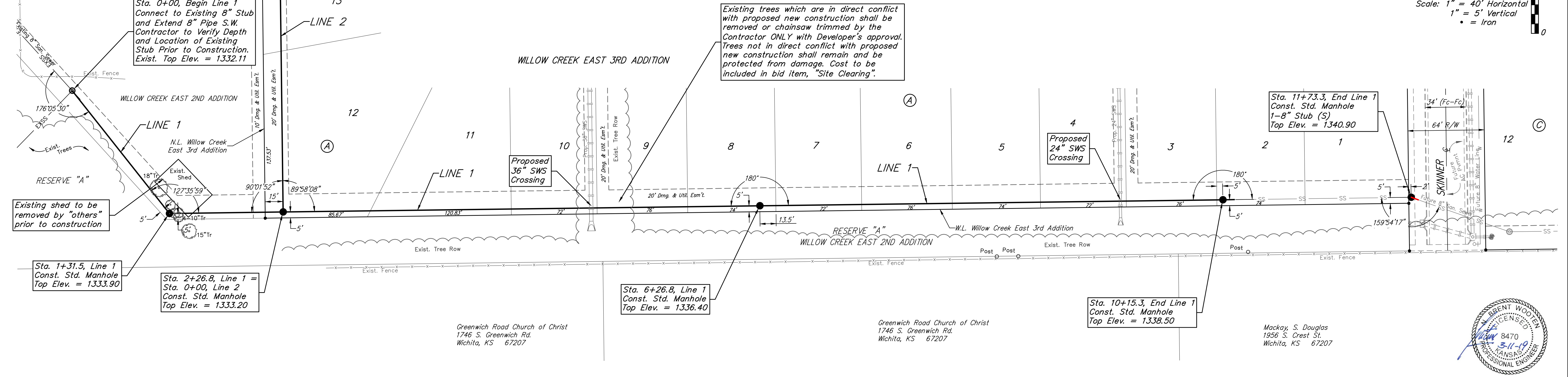
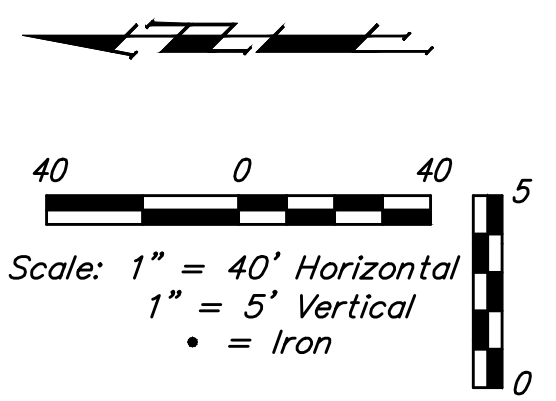
VICINITY MAP

BENEFIT DISTRICT



Baughman Company, P.A. 315 Ellis St. Wichita, KS 67211 P 316-262-7271 F 316-262-0149  
 ENGINEERING | SURVEYING | PLANNING | LANDSCAPE ARCHITECTURE

**BENCHMARKS:**  
 Brass benchmark disc in top of curb, east of wheelchair ramp NE cor. of Funston and Lynnrae Elev. = 1343.69 NAVD88  
 Brass benchmark disc in top of curb, north of wheelchair ramp NW cor. of Funston and Herrington Elev. = 1344.71 NAVD88



**Baughman** Willow Creek East 3rd Addition - Phase I  
**LINE 1**  
 Sanitary Sewer Improvements

Baughman Company, P.A. 315 Ellis St. Wichita, KS 67211 P 316-262-7271 F 316-262-0149  
 ENGINEERING | SURVEYING | PLANNING | LANDSCAPE ARCHITECTURE

PROJECT NUMBER: 468-89554  
 DESIGN: NBW  
 DRAWN: JAK  
 APPROVED: [Signature]  
 DATE: 3/08/19

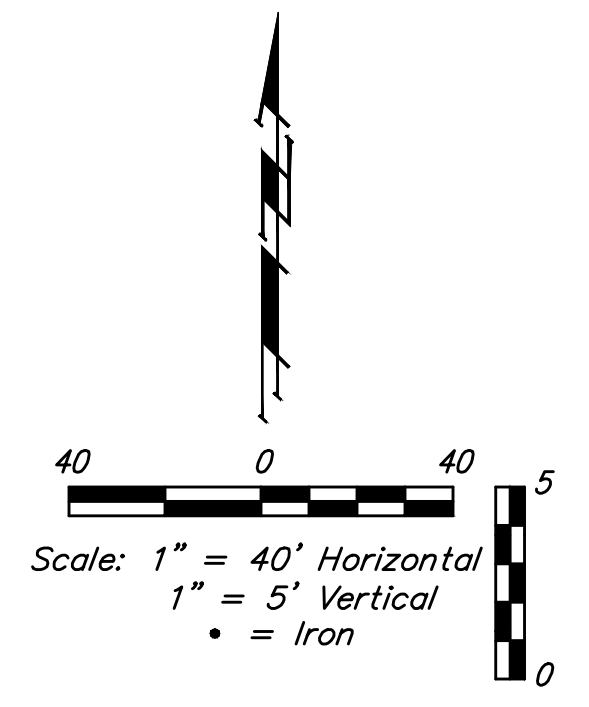
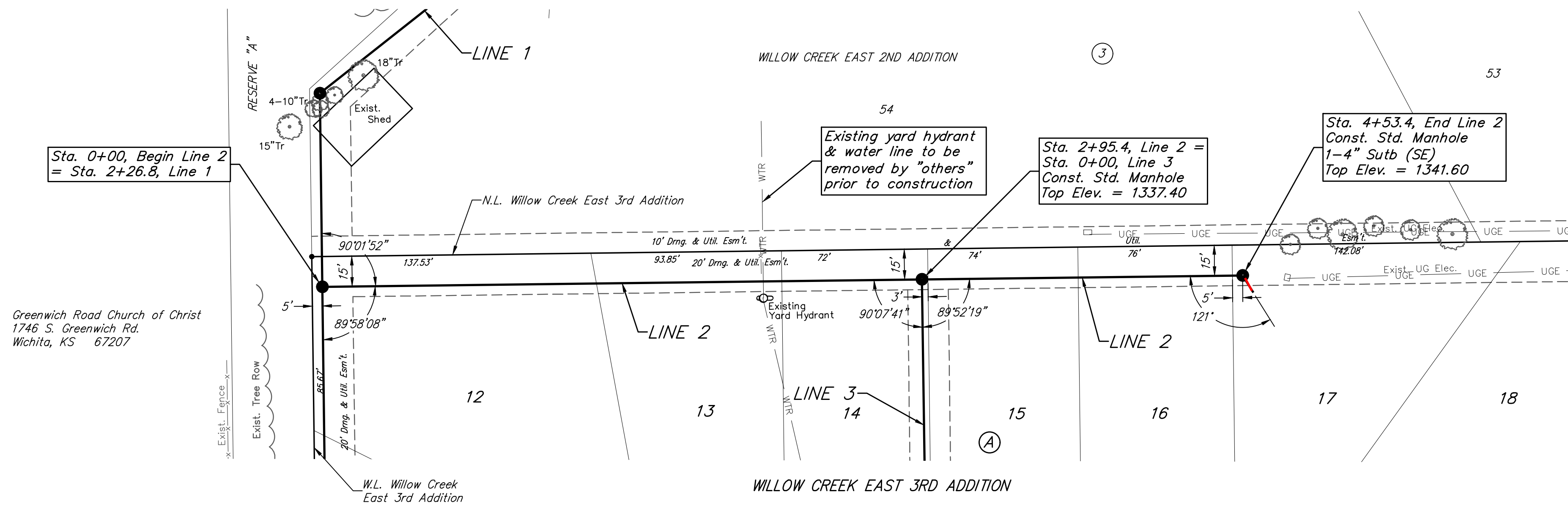
REVISIONS:

SCALE: Noted  
 SHEET: **2 OF 15**

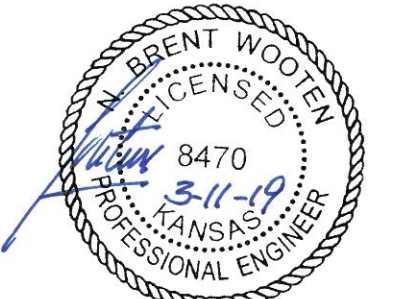
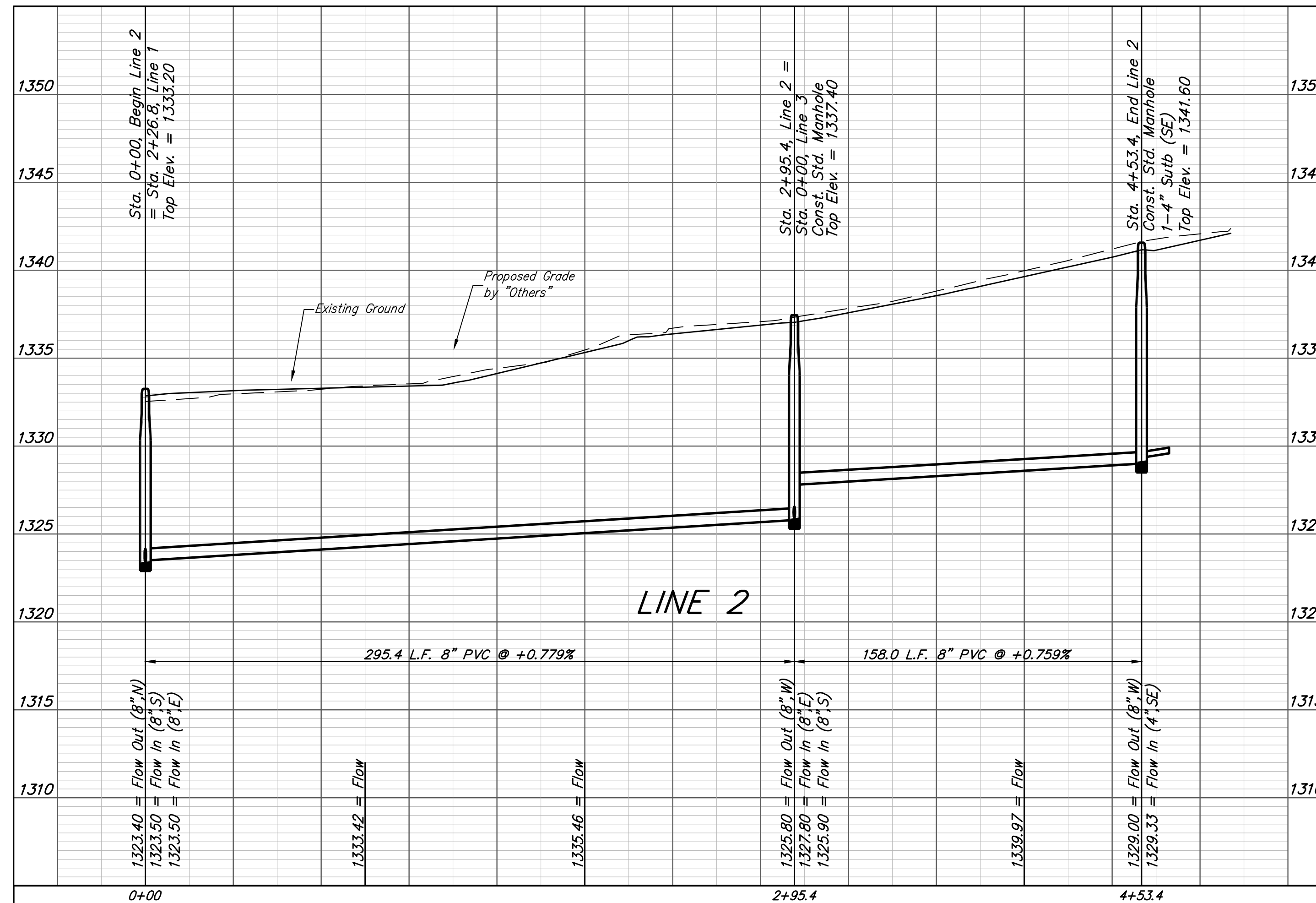
E:\Projects\Willow Creek East 3rd Addition\_1704F283\Engineering\Phase I\SS\_18-11-19\SS PLANS.dwg

**BENCHMARKS:**  
 Brass benchmark disc in top of curb, east of wheelchair ramp NE cor. of Funston and Lynnrae  
 Elev. = 1343.69 NAVD88

Brass benchmark disc in top of curb, north of wheelchair ramp NW cor. of Funston and Herrington  
 Elev. = 1344.71 NAVD88



Greenwich Road Church of Christ  
 1746 S. Greenwich Rd.  
 Wichita, KS 67207



		Willow Creek East 3rd Addition - Phase I	
		<b>LINE 2</b>	
Sanitary Sewer Improvements		Baughman Company, P.A. 315 Ellis St. Wichita, KS 67211 P 316-262-7271 F 316-262-0149 ENGINEERING   SURVEYING   PLANNING   LANDSCAPE ARCHITECTURE	
PROJECT NUMBER 468-89554	DESIGN NBW	DRAWN JAK	APPROVED DATE 3/08/19
REVISIONS:	SCALE Noted SHEET		
<b>3 OF 15</b>			

**BENCHMARKS:**  
 Brass benchmark disc in top of curb, east of wheelchair ramp NE cor. of Funston and Lynnrae Elev. = 1343.69 NAVD88

Brass benchmark disc in top of curb, north of wheelchair ramp NW cor. of Funston and Herrington Elev. = 1344.71 NAVD88

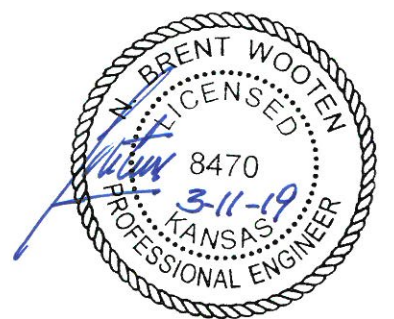
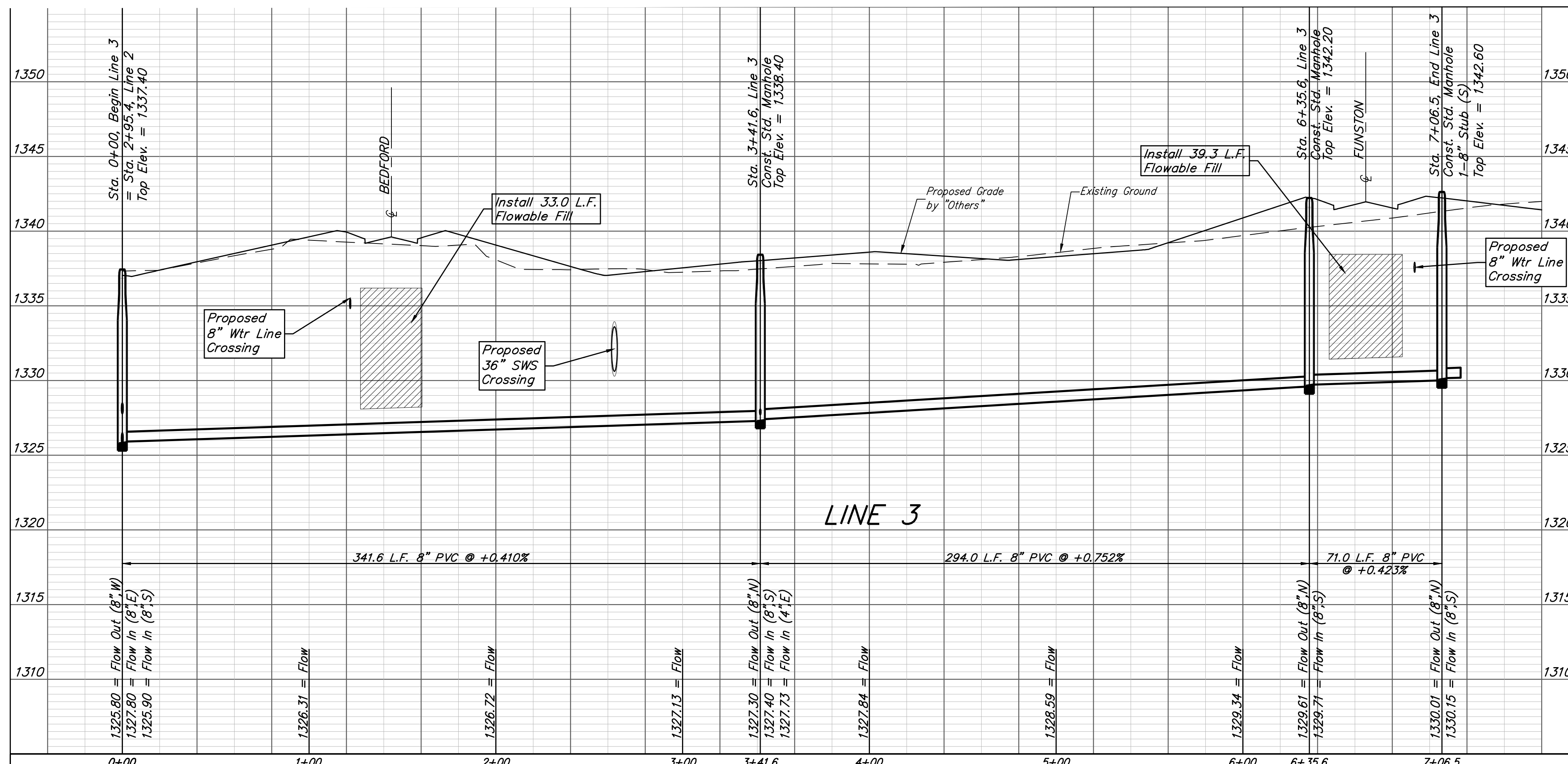
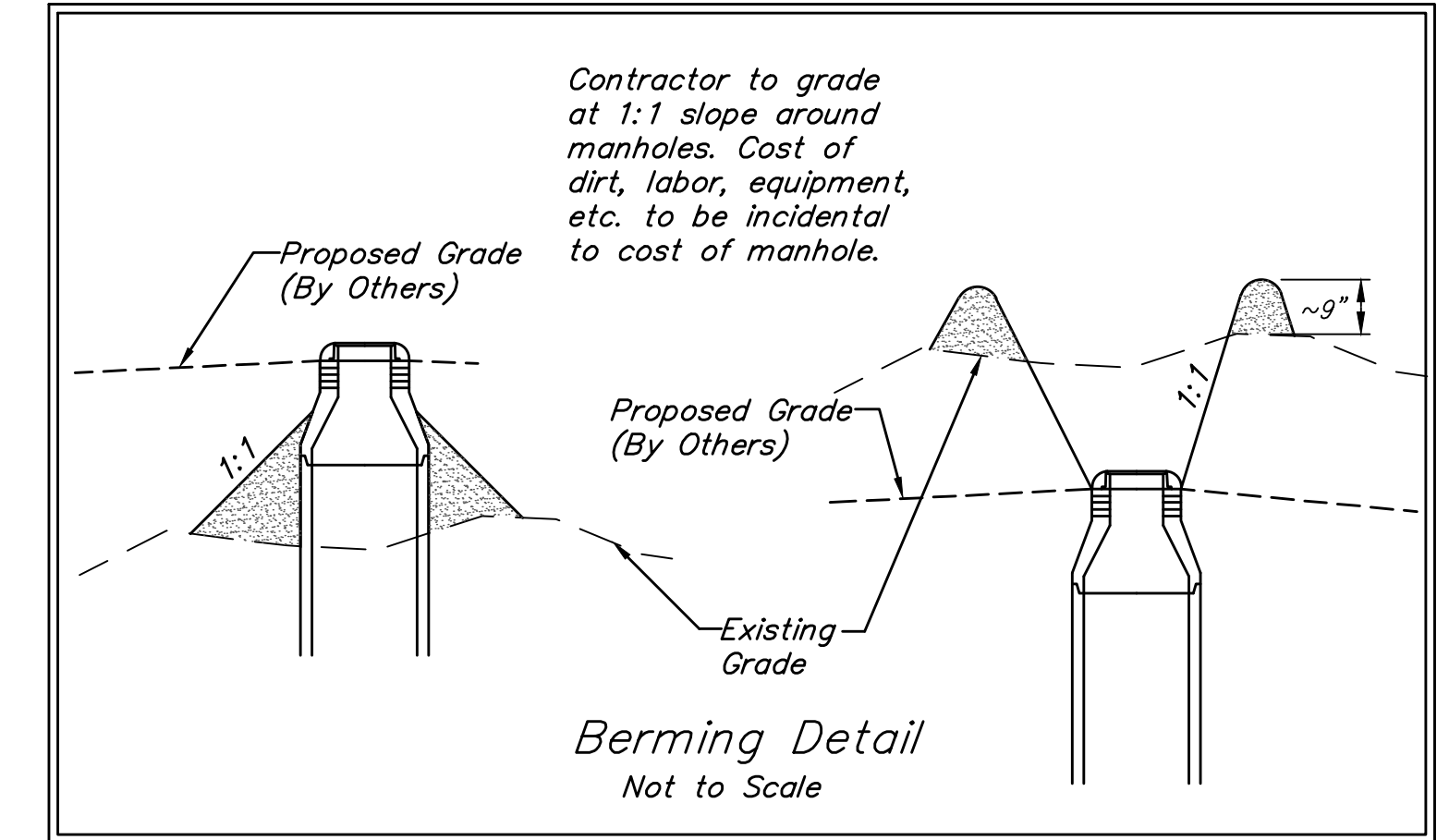
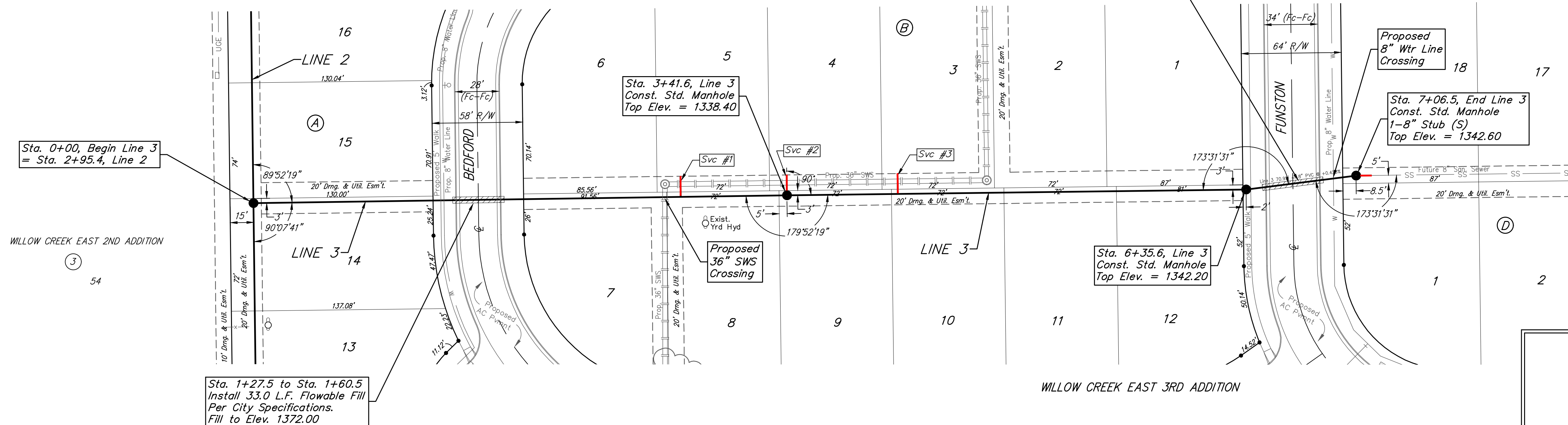
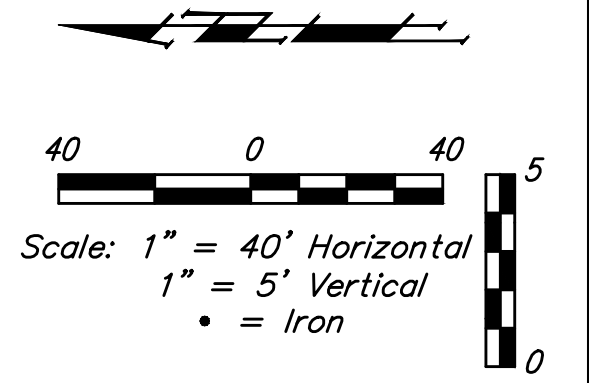
**SEWER SERVICE TABLE**

NUMBER	TYPE	LOCATION				FOR INFORMATION ONLY	
		LOT NO.	BLOCK NO.	LINE NO.	STATION/DIRECTION	APPROXIMATE LENGTH 4" PIPE	VERTICAL
1	8" X 4" Tee	5	B	3	1+09.5/Lt.	4.3'	13'
2	4" Stub	4	B	3	3+41.6/Lt.	6.2'	13'
3	8" X 4" Tee	3	B	3	4+12.6/Lt.	4.7'	13'

Distance from Main to Riser (Lt./Rt.)	Distance from	
	Upstream MH	Downstream MH
13' Lt.	61.6'	280'
13' Lt.	@ MH	@ MH
13' Lt.	223'	71'

NOTE: Vertical Riser Pipe shall be extended to 2' minimum above ground water elevation and 4' maximum below proposed ground elevation.

WILLOW CREEK EAST 3RD ADDITION



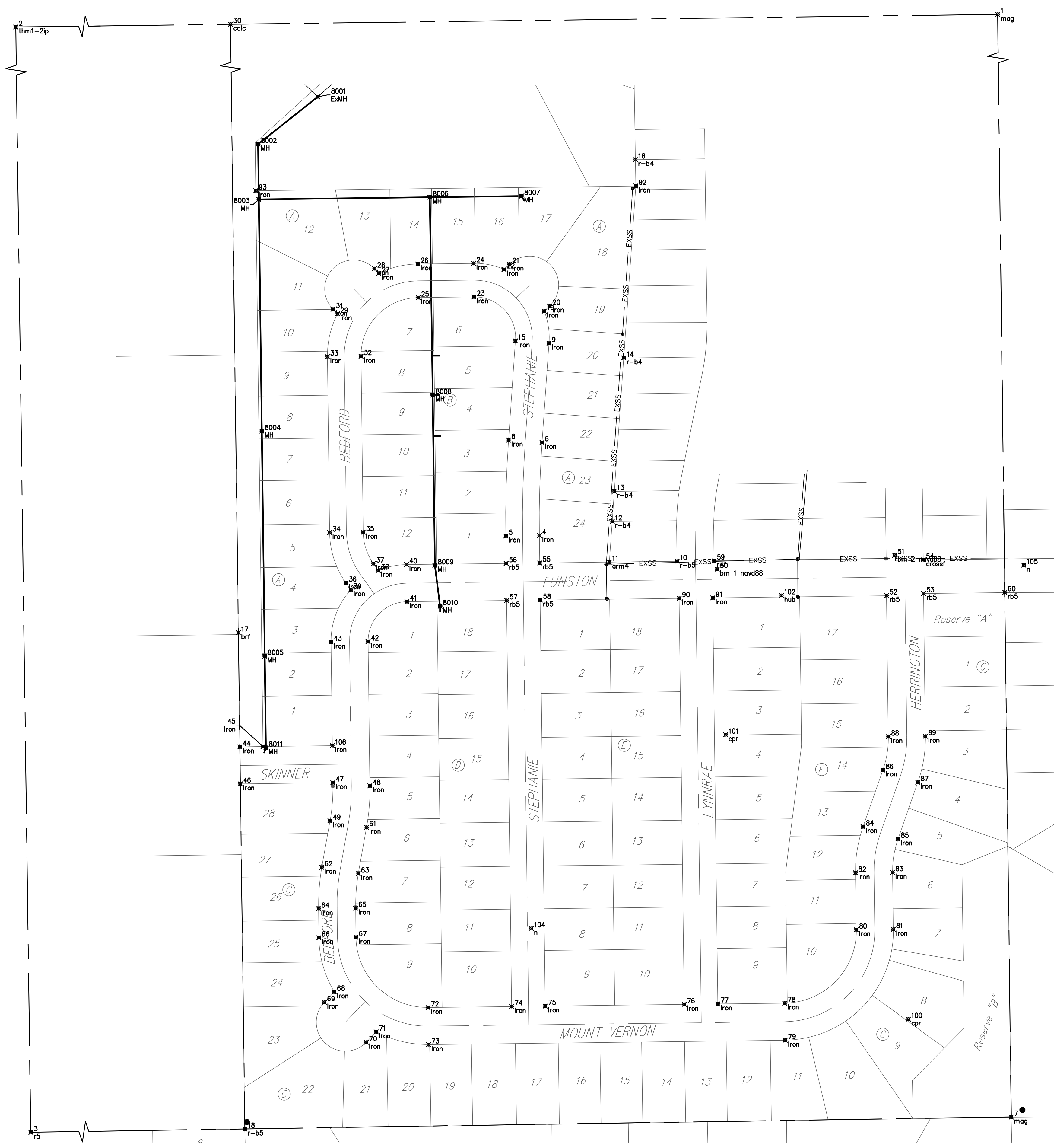
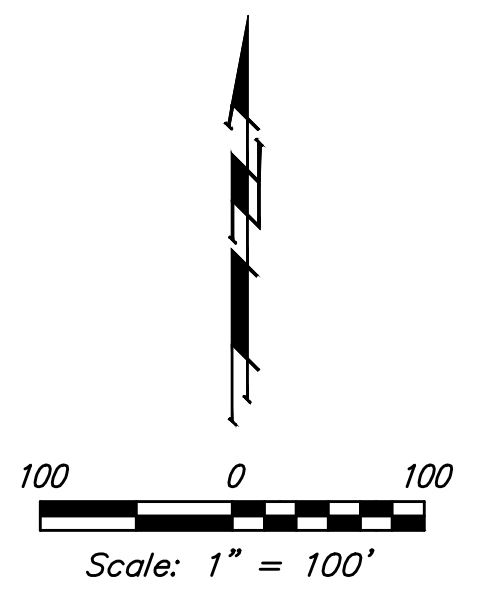
**Baughman** Willow Creek East 3rd Addition - Phase I  
**LINE 3**  
 Sanitary Sewer Improvements

Baughman Company, P.A. 315 Ellis St. Wichita, KS 67211 P 316-262-7271 F 316-262-0149  
 ENGINEERING | SURVEYING | PLANNING | LANDSCAPE ARCHITECTURE

PROJECT NUMBER 468-89554	DESIGN NBW	DRAWN JAK
REVISIONS:	APPROVED	DATE 3/08/19
	SCALE Noted	SHEET 4 OF 15

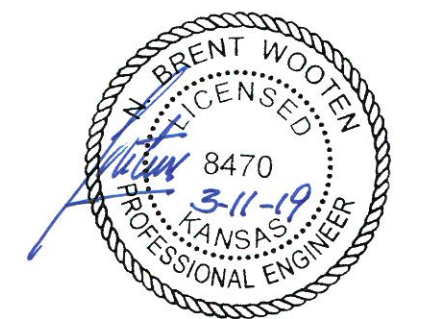
E:\Projects\Willow Creek East 3rd Addition\_1704\F283\Engineering\Phase I\SS\_18-11-E119-SS PLANS.dwg

**BENCHMARKS:**  
 Brass benchmark disc in top of curb, east of wheelchair ramp NE cor. of Funston and Lynnrae Elev. = 1343.69 NAVD88  
 Brass benchmark disc in top of curb, north of wheelchair ramp NW cor. of Funston and Herrington Elev. = 1344.71 NAVD88



Coordinate Table			
Point	Northing	Easting	Desc
1	1,678,375.07	1,688,991.94	mag
2	1,678,341.15	1,686,342.75	thm1-2ip
3	1,675,680.22	1,686,378.99	r5
4	1,676,725.30	1,688,210.46	r5
5	1,676,724.57	1,688,152.47	Iron
6	1,676,886.11	1,688,215.06	Iron
7	1,675,721.72	1,689,025.23	mag
8	1,676,890.15	1,688,157.20	Iron
9	1,677,057.23	1,688,227.01	Iron
10	1,676,681.05	1,688,448.22	r-b5
11	1,676,679.54	1,688,331.22	arm4
12	1,676,749.74	1,688,336.25	r-b4
13	1,676,801.91	1,688,339.83	r-b4
14	1,677,031.99	1,688,356.15	r-b4
15	1,677,061.26	1,688,169.15	Iron
16	1,677,374.16	1,688,376.33	r-b4
17	1,676,557.50	1,687,690.91	brf
18	1,675,700.98	1,687,702.13	r-b5
19	1,677,112.56	1,688,218.70	Iron
20	1,677,121.62	1,688,228.14	Iron
21	1,677,193.72	1,688,158.84	Iron
22	1,677,184.66	1,688,149.41	Iron
23	1,677,137.20	1,688,097.46	Iron
24	1,677,195.19	1,688,096.74	Iron
25	1,677,136.00	1,688,001.32	Iron
26	1,677,194.00	1,688,000.60	Iron
27	1,677,178.03	1,687,933.33	Iron
28	1,677,185.97	1,687,925.54	Iron
29	1,677,108.01	1,687,861.93	Iron
30	1,678,358.11	1,687,667.34	calc
31	1,677,115.95	1,687,854.15	Iron
32	1,677,034.77	1,687,902.58	Iron
33	1,677,034.04	1,687,844.58	Iron
34	1,676,730.38	1,687,848.37	Iron
35	1,676,731.10	1,687,906.36	Iron
36	1,676,643.59	1,687,876.47	Iron
37	1,676,677.00	1,687,923.88	Iron
38	1,676,665.13	1,687,932.24	Iron
39	1,676,631.73	1,687,884.83	Iron
40	1,676,675.15	1,687,981.07	Iron
41	1,676,611.16	1,687,981.87	Iron
42	1,676,542.32	1,687,914.72	Iron
43	1,676,541.52	1,687,850.72	Iron
44	1,676,360.57	1,687,693.34	Iron
45	1,676,361.09	1,687,733.34	Iron
46	1,676,296.58	1,687,694.18	Iron
47	1,676,298.65	1,687,853.75	Iron
48	1,676,293.31	1,687,917.82	Iron
49	1,676,232.97	1,687,848.96	Iron
50	1,676,667.34	1,688,517.38	bm 1 navd88
51	1,676,691.36	1,688,823.88	bm 2 navd88
52	1,676,621.84	1,688,809.98	rb5
53	1,676,625.44	1,688,873.84	rb5
54	1,676,683.42	1,688,873.12	crossf
55	1,676,678.05	1,688,211.11	rb5
56	1,676,677.35	1,688,153.13	rb5
57	1,676,613.35	1,688,154.03	rb5
58	1,676,614.11	1,688,211.90	rb5
59	1,676,681.81	1,688,512.03	r4f
60	1,676,627.36	1,689,014.01	rb5

Coordinate Table			
Point	Northing	Easting	Desc
61	1,676,221.78	1,687,911.97	Iron
62	1,676,152.77	1,687,834.72	Iron
63	1,676,141.58	1,687,897.74	Iron
64	1,676,081.05	1,687,829.22	Iron
65	1,676,082.18	1,687,893.21	Iron
66	1,676,031.22	1,687,829.84	Iron
67	1,676,032.02	1,687,893.84	Iron
68	1,675,937.62	1,687,856.31	Iron
69	1,675,919.66	1,687,839.19	Iron
70	1,675,850.67	1,687,911.57	Iron
71	1,675,868.62	1,687,928.69	Iron
72	1,675,910.56	1,688,018.36	Iron
73	1,675,846.56	1,688,019.16	Iron
74	1,675,912.36	1,688,162.59	Iron
75	1,675,913.08	1,688,220.59	Iron
76	1,675,916.07	1,688,460.57	Iron
77	1,675,916.80	1,688,518.56	Iron
78	1,675,918.24	1,688,634.06	Iron
79	1,675,854.24	1,688,634.86	Iron
80	1,676,044.85	1,688,757.50	Iron
81	1,676,045.68	1,688,821.49	Iron
82	1,676,143.16	1,688,756.22	Iron
83	1,676,143.99	1,688,820.21	Iron
84	1,676,222.81	1,688,769.22	Iron
85	1,676,201.67	1,688,829.63	Iron
86	1,676,320.53	1,688,803.42	Iron
87	1,676,299.39	1,688,863.83	Iron
88	1,676,378.12	1,688,812.84	Iron
89	1,676,378.92	1,688,876.83	Iron
90	1,676,617.02	1,688,451.83	Iron
91	1,676,617.74	1,688,509.83	Iron
92	1,677,328.70	1,688,376.95	Iron
93	1,677,320.52	1,687,720.86	Iron
100	1,675,890.58	1,688,847.60	cpr
101	1,676,381.51	1,688,531.97	cpr
102	1,676,621.98	1,688,628.40	hub
104	1,676,047.22	1,688,196.40	n
105	1,676,674.28	1,689,046.74	n
8001	1,677,482.49	1,687,827.93	ExMH
8002	1,677,400.92	1,687,724.81	MH
8003	1,677,305.58	1,687,726.05	MH
8004	1,676,905.62	1,687,731.26	MH
8005	1,676,517.14	1,687,736.31	MH
8006	1,677,309.26	1,688,021.40	MH
8007	1,677,311.23	1,688,179.39	MH
8008	1,676,967.74	1,688,026.42	MH
8009	1,676,673.76	1,688,030.09	MH
8010	1,676,603.37	1,688,038.97	MH
8011	1,676,359.16	1,687,738.37	MH



**Baughman**

Willow Creek East 3rd Addition - Phase I

**COORDINATES**

Sanitary Sewer Improvements

---

Baughman Company, P.A. 315 Ellis St. Wichita, KS 67211 P 316-262-7271 F 316-262-0149  
 ENGINEERING | SURVEYING | PLANNING | LANDSCAPE ARCHITECTURE

PROJECT NUMBER <b>468-89554</b>	DESIGN NBW	DRAWN JAK
REVISIONS:	APPROVED	DATE 3/08/19
	SCALE Noted	SHEET <b>14 OF 15</b>

C:\Projects\Willow Creek East 3rd Addition\_1704P283\Engineering\Phase I\SS\_18-11-EI1919SS PLANS.dwg