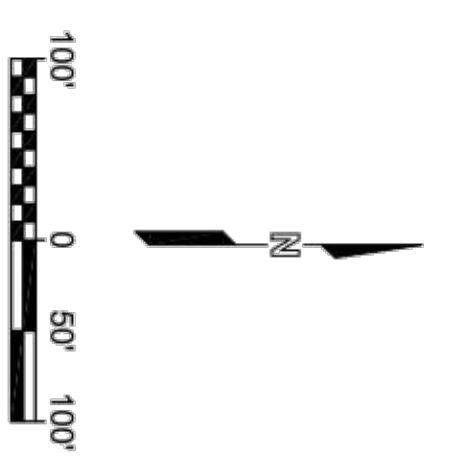


EMERALD BAY ESTATES 4TH ADDITION

Wichita, Sedgwick County, Kansas

Curve #	Length	Radius	Delta	Chord Direction	Chord Length
C7	108.88	200.00	31.19	S74°20'01"W	107.52
C8	108.88	200.00	31.19	N74°20'01"E	107.52
C9	25.71	250.00	5.89	S87°07'38"E	25.70
C10	38.85	225.00	9.84	S0°04'29"W	38.80
C11	43.86	225.00	11.12	N0°33'50"W	43.59
C12	69.21	190.00	20.87	N79°38'17"W	68.83
C13	72.85	200.00	20.87	S79°38'17"E	72.45

Line #	Length	Direction
L10	159.80	S0°04'24"E
L11	90.00	N89°55'38"E
L12	124.00	N89°55'38"E
L13	35.08	S84°10'52"E
L14	138.89	N4°50'45"W
L16	157.66	S4°59'42"W
L18	100.00	S8°07'22"E
L17	90.33	S89°55'38"W
L19	170.00	S89°55'38"W

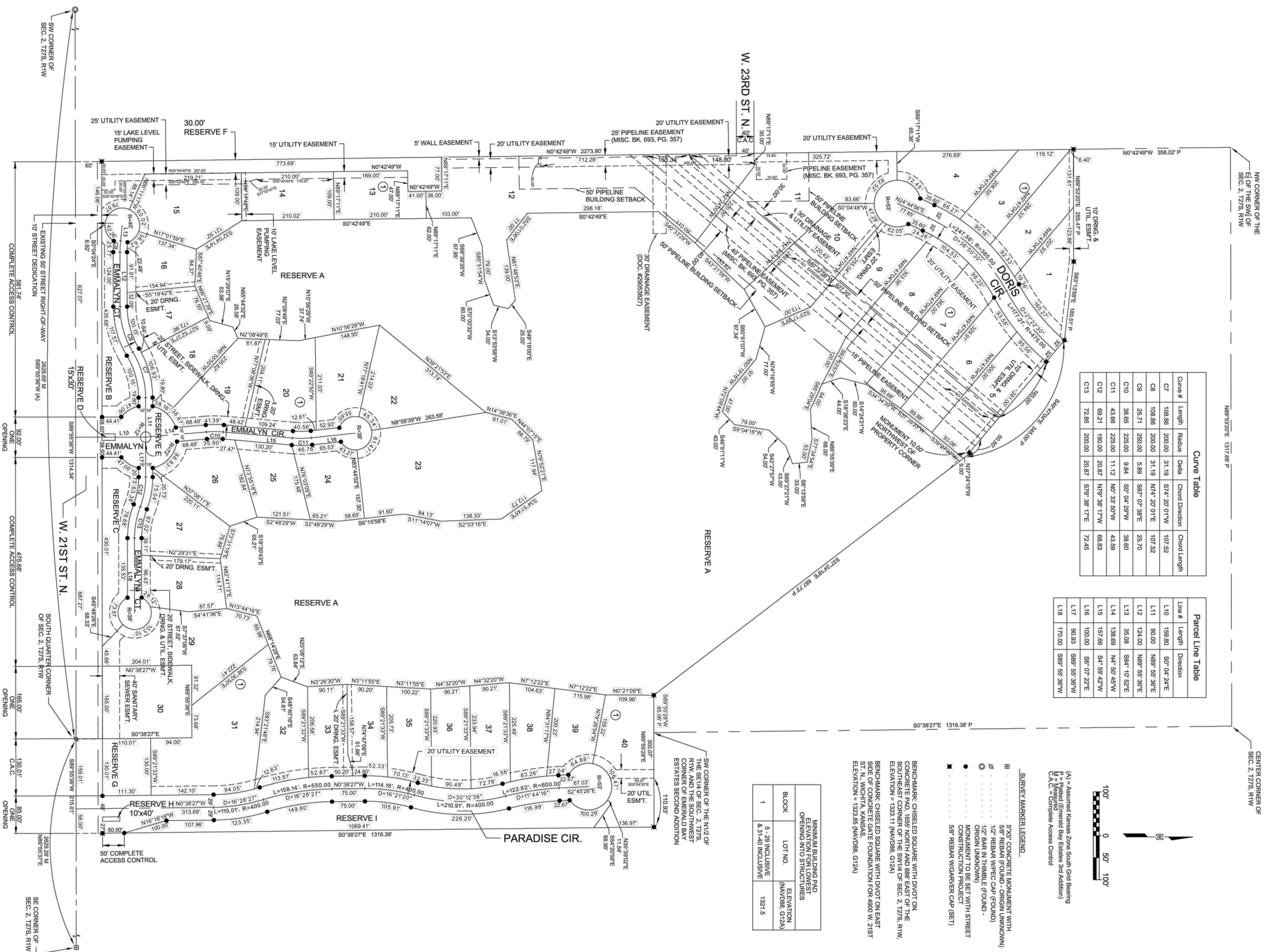


(A) = Assumed Kansas Zone South Grid Bearing
 P = Pinned (Emerald Bay Estates 3rd Addition)
 C.A.C. = Complete Access Control

- SURVEY MARKER LEGEND**
- 5"x5" CONCRETE MONUMENT WITH 5/8" REBAR (FOUND - ORIGIN UNKNOWN)
 - 1/2" REBAR W/PEC CAP (FOUND)
 - 1/2" BAR IN THIMBLE (FOUND - ORIGIN UNKNOWN)
 - MONUMENT TO BE SET WITH STREET CONSTRUCTION PROJECT
 - ✱ 5/8" REBAR W/GARVER CAP (SET)

BENCHMARK CHISELED SQUARE WITH DVIOT ON CONCRETE PAD, 1655 NORTH AND 888' EAST OF THE SOUTHEAST CORNER OF THE SW1/4 OF SEC. 2, 127S, R1W, ELEVATION = 1323.11 (NAVD83, 5/12A)
 BENCHMARK CHISELED SQUARE WITH DVIOT ON EAST SIDE OF CONCRETE GATE FOUNDATION FOR 4900' W. 21ST ST. N, WICHITA, KANSAS, ELEVATION = 1323.85 (NAVD83, 5/12A)

BLOCK	LOT NO.	ELEVATION (NAVD83, 5/12A)
1	5 - 29 INCLUSIVE & 31-40 INCLUSIVE	1321.5



SHEET 2 OF 2

DWG FILE: EMERALD BAY 4TH SURVEY BASE PROJECT NO. 18286001 APRIL 30, 2019