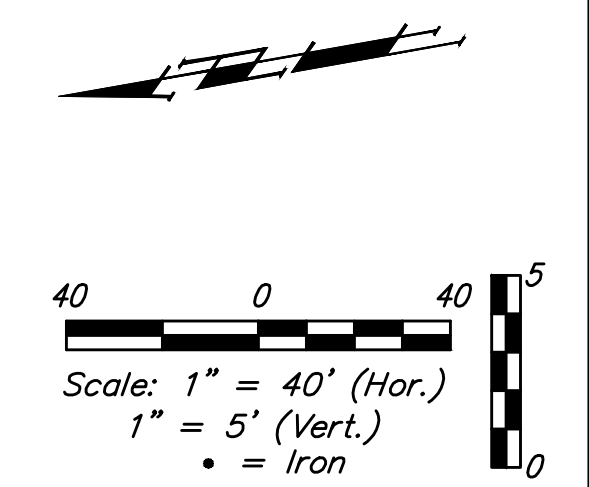
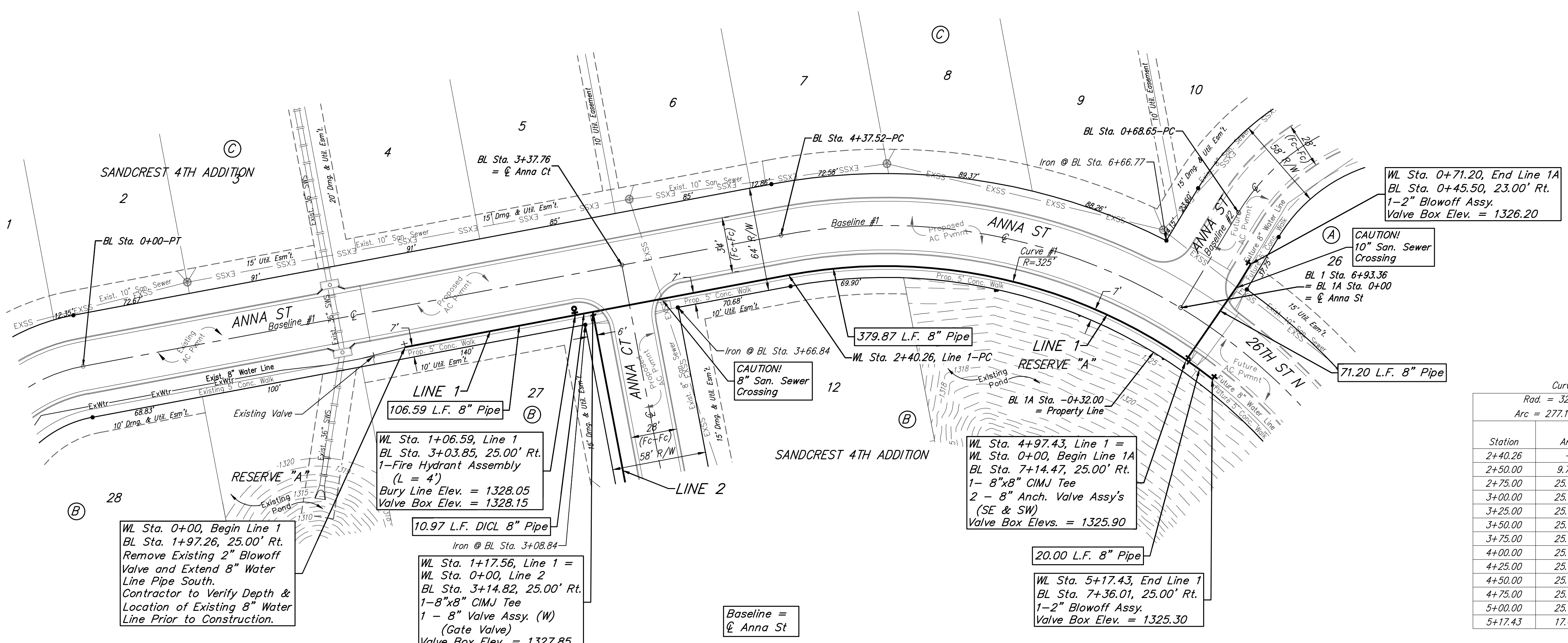


**BENCHMARKS:**  
 Benchmark Disk in top of curb north end of east curb return, adj. to the northwest cor., Lot 1, Block C, Sandcrest 4th Addn.  
 Elev. = 1338.02 NAVD88

"□" cut in top of curb adj. to the southwest corner of Lot 4, Block B, Sandcrest 4th Addn.  
 Elev. = 1327.78 NAVD88

"□" cut in face of curb inlet, east side of Anna St, between Lot 3 & Lot 4, Block C, Sandcrest 4th Addn.  
 Elev. = 1327.09 NAVD88



Curve #1  
 Curve Data Based on Centerline of Pipe  
 Rad. = 325' Delta = 48°51'48" Tangent = 147.64'  
 Arc = 277.17' L.C. = 268.84' Def./Ft. = 5.28881 Min.

Station	Arc	Chord 8' Right	Defl.	Total Defl.
2+40.26	-	-	0°00'00"	0°00'00"
2+50.00	9.74'	9.50'	0°51'31"	0°51'31"
2+75.00	25.00'	24.38'	2°12'13"	3°03'44"
3+00.00	25.00'	24.38'	2°12'13"	5°15'57"
3+25.00	25.00'	24.38'	2°12'13"	7°28'10"
3+50.00	25.00'	24.38'	2°12'14"	9°40'24"
3+75.00	25.00'	24.38'	2°12'13"	11°52'37"
4+00.00	25.00'	24.38'	2°12'13"	14°04'50"
4+25.00	25.00'	24.38'	2°12'13"	16°17'03"
4+50.00	25.00'	24.38'	2°12'14"	18°29'17"
4+75.00	25.00'	24.38'	2°12'13"	20°41'30"
5+00.00	25.00'	24.38'	2°12'13"	22°53'43"
5+17.43	17.43'	17.00'	1°32'11"	24°25'54"

WL Sta. 0+00, Begin Line 1  
 BL Sta. 1+97.26, 25.00' Rt.  
 Remove Existing 2" Blowoff Valve and Extend 8" Water Line Pipe South.  
 Contractor to Verify Depth & Location of Existing 8" Water Line Prior to Construction.

WL Sta. 1+06.59, Line 1  
 BL Sta. 3+03.85, 25.00' Rt.  
 1-Fire Hydrant Assembly (L = 4')  
 Bury Line Elev. = 1328.05  
 Valve Box Elev. = 1328.15

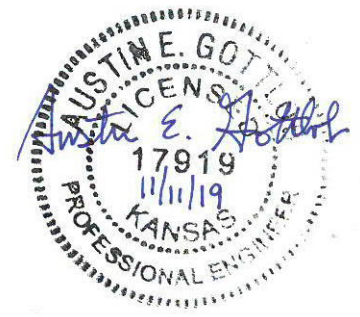
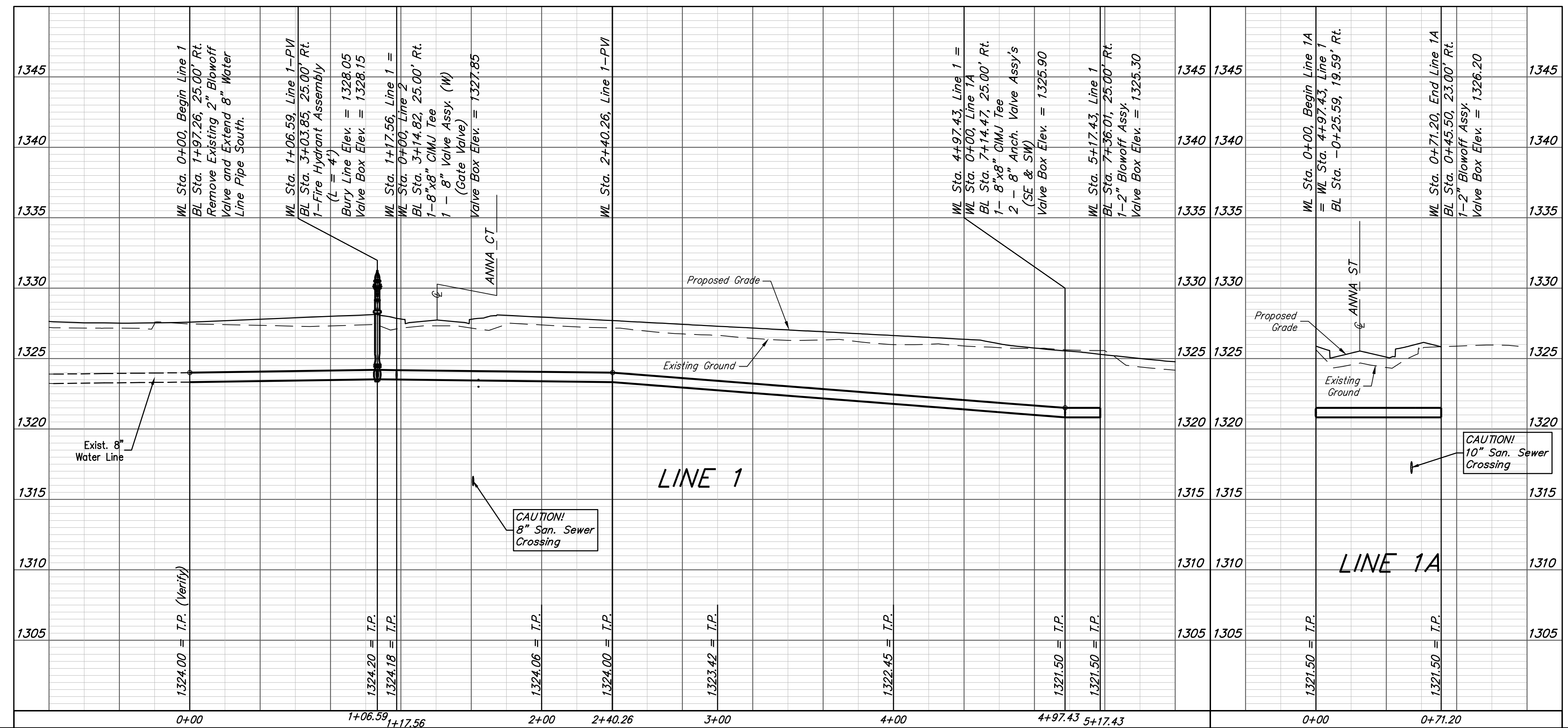
10.97 L.F. DICL 8" Pipe  
 Iron @ BL Sta. 3+08.84

WL Sta. 1+17.56, Line 1 =  
 WL Sta. 0+00, Line 2  
 BL Sta. 3+14.82, 25.00' Rt.  
 1-8"x8" CIMJ Tee  
 1-8" Valve Assy. (W)  
 (Gate Valve)  
 Valve Box Elev. = 1327.85

Baseline =  
 @ Anna St

WL Sta. 4+97.43, Line 1 =  
 WL Sta. 0+00, Begin Line 1A  
 BL Sta. 7+14.47, 25.00' Rt.  
 1-8"x8" CIMJ Tee  
 2-8" Anch. Valve Assy's (SE & SW)  
 Valve Box Elev. = 1325.90

WL Sta. 5+17.43, End Line 1  
 BL Sta. 7+36.01, 25.00' Rt.  
 1-2" Blowoff Assy.  
 Valve Box Elev. = 1325.30



**Baughman** Sandcrest 4th Addition - Phase III  
**LINE 1 & LINE 1A**  
 Water Distribution System

Baughman Company, P.A. 315 Ellis St. Wichita, KS 67211 P 316-262-7271 F 316-262-0149  
 ENGINEERING | SURVEYING | PLANNING | LANDSCAPE ARCHITECTURE

PROJECT NUMBER: 448-90898 DESIGN: AEG DRAWN: JAK  
 APPROVED: DATE: 11/08/19  
 SCALE: Noted SHEET: 4 OF 12

REVISIONS:

C:\Projects\Sandcrest 4th Addition\_1801-P351\Engineering\Phase 3\WTR\_19-10-E393\WTR PLANS.dwg