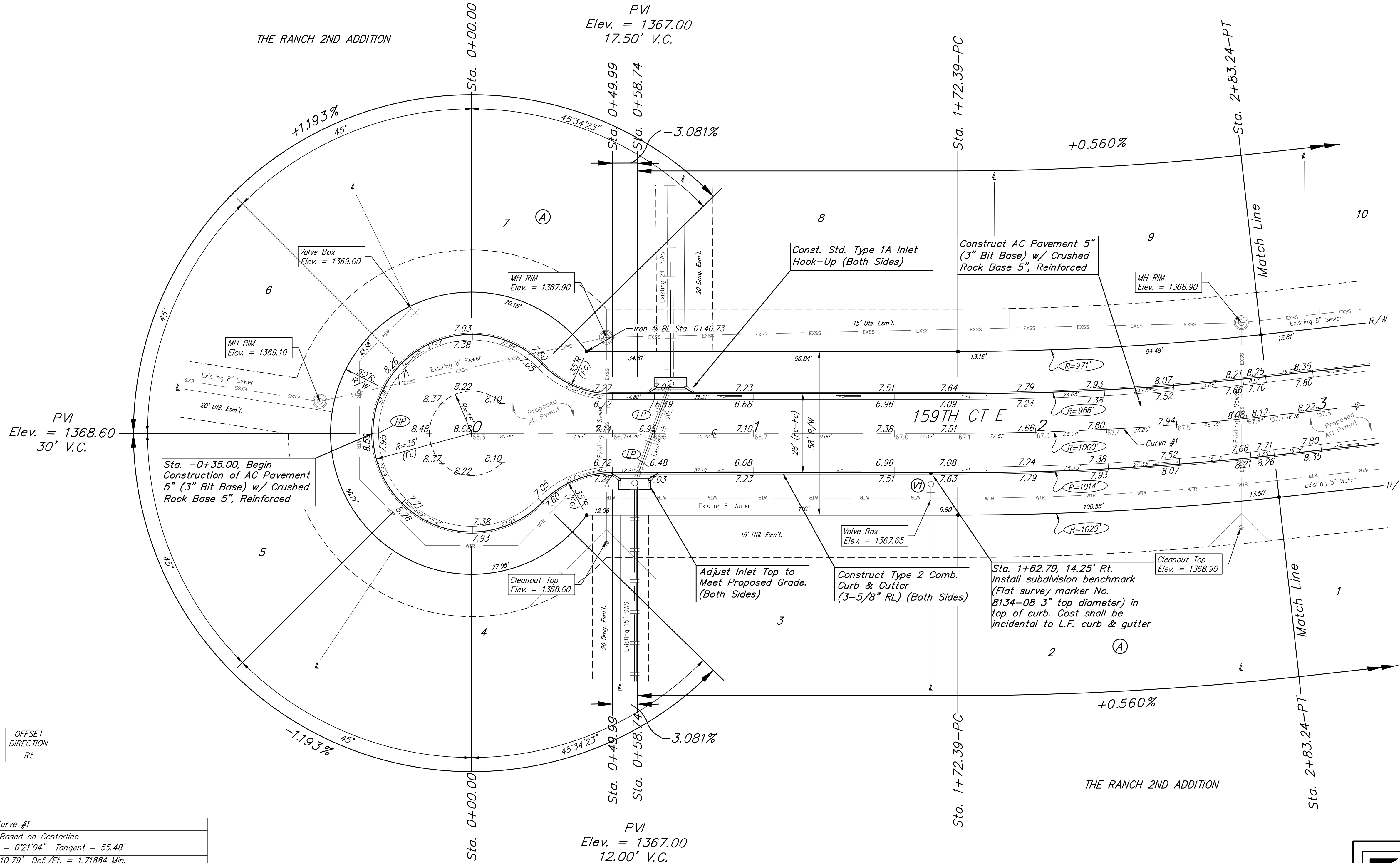
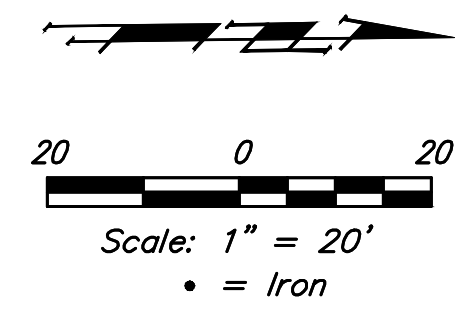


BENCHMARKS:
 #1: "X" CUT CHISELED ON CURB INLET,
 8.9' S. & 27.5' W. OF THE NW COR., LOT
 22, BLOCK 1, QUAIL CROSSING ADDITION,
 PHASE 2, 22.3' EAST OF @ N. 159TH ST. E.
 ELEV. = 1370.15 (NAVD88)

#2: "X" CUT CHISELED ON CURB INLET,
 13.2' S. & 60.1' E. OF THE NE COR., LOT
 2, BLOCK A, THE RANCH 2ND ADDITION,
 24.9' WEST OF @ N. 159TH ST. E.
 ELEV. = 1369.05 (NAVD88)



VALVE LOCATION TABLE

VALVE NUMBER	STREET	BASELINE STATION	OFFSET DISTANCE	OFFSET DIRECTION
1	159th Ct. E	1+62.79	23.0'	Rt.

Curve #1
 Curve Data Based on Centerline
 Rad. = 1000' Delta = 62°1'04" Tangent = 55.48'
 Arc = 110.85' L.C. = 110.79' Def./Ft. = 1.71884 Min.

Station	Arc	0' Left	0' Right	Defl.	Total Defl.
1+72.39	-	-	-	0°00'00"	0°00'00"
1+75.00	2.61'	2.57'	2.65'	0°04'29"	0°04'29"
2+00.00	25.00'	24.65'	25.35'	0°42'58"	0°47'27"
2+25.00	25.00'	24.65'	25.35'	0°42'59"	1°30'26"
2+50.00	25.00'	24.65'	25.35'	0°42'58"	2°13'24"
2+75.00	25.00'	24.65'	25.35'	0°42'58"	2°56'22"
2+83.24	8.24'	8.12'	8.36'	0°14'10"	3°10'32"

Roll type curb & gutter to be constructed on the pavement on this sheet.
 Top of curb elevation are given for full height curb.

Baughman The Ranch 2nd Addition
159TH CT E
 Sta. 0+35.00 to Sta. 2+83.24

Baughman Company, P.A. 315 Ellis St. Wichita, KS 67211 P 316-262-7271 F 316-262-0149
 ENGINEERING | SURVEYING | PLANNING | LANDSCAPE ARCHITECTURE

PROJECT NUMBER: 2019-085564 DESIGN: AEG DRAWN: HW
 APPROVED: DATE: 11/11/19
 SCALE: Noted SHEET: 6 OF 23

REVISIONS: