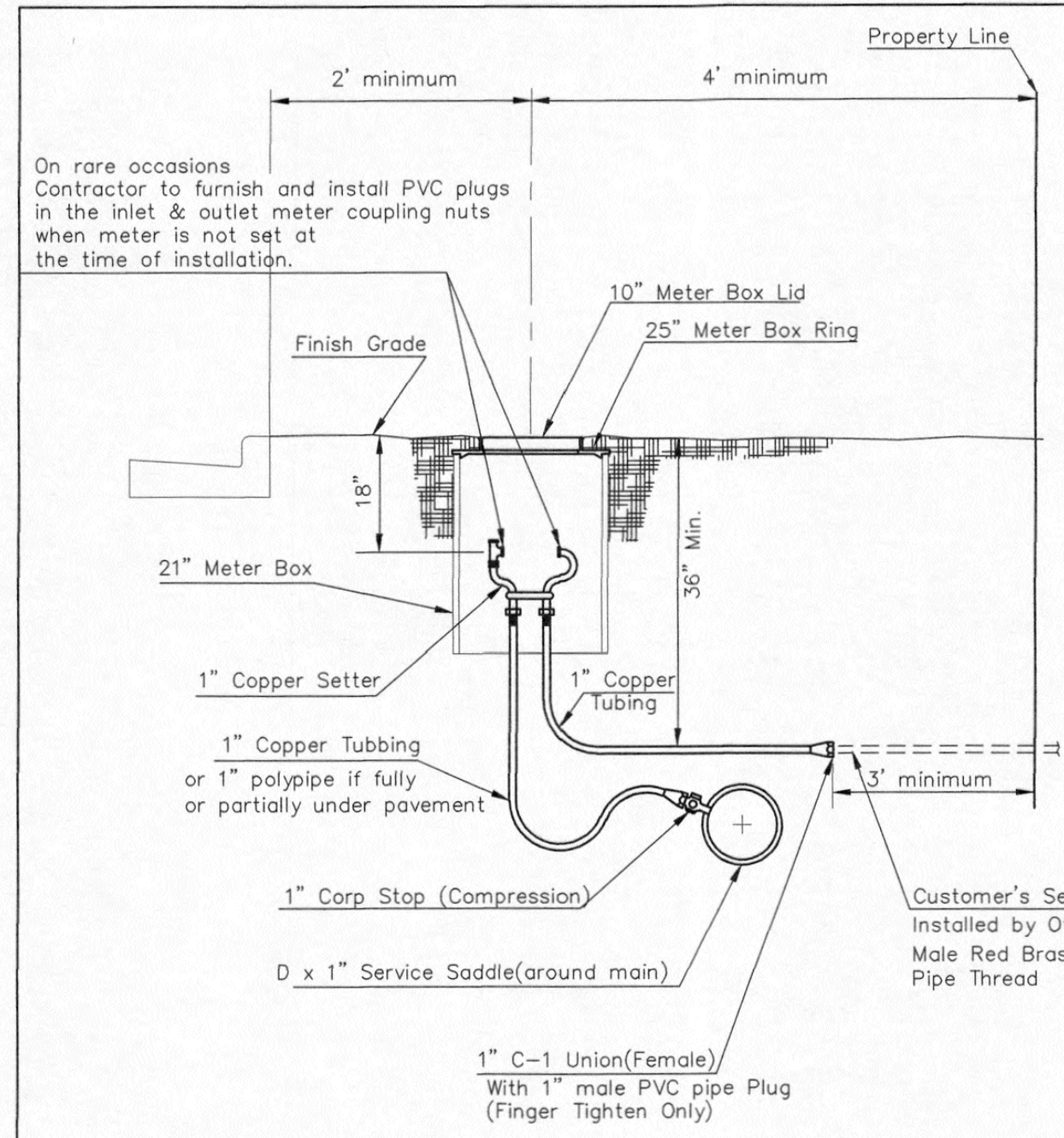


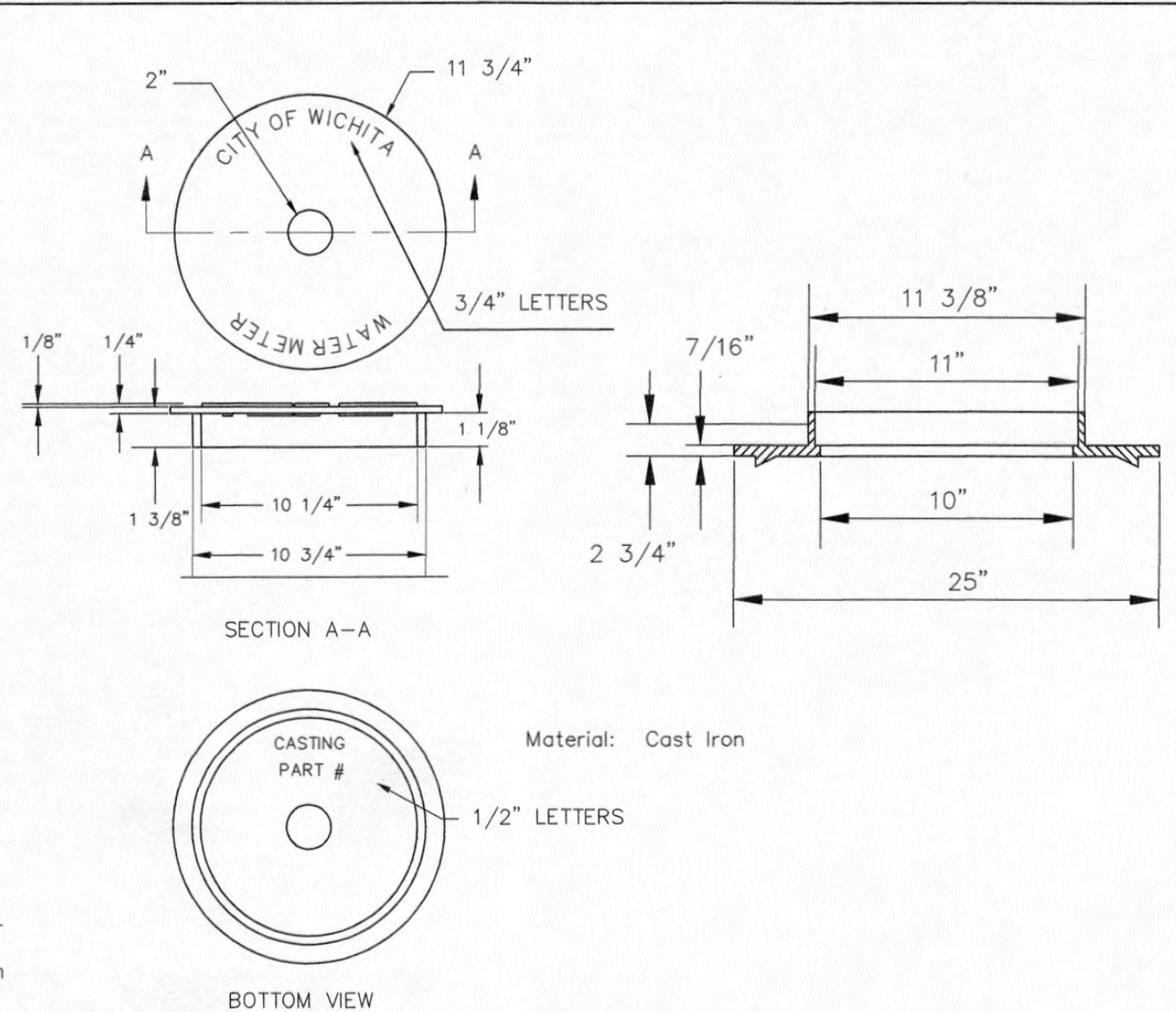
Sheet 10-11-2019, 11:24:55 AM by KURTIS PECKAT
 Plot Scale: 1" = 15'-0" (11/16" = 15'-0")
 U:\Wichita-Civil\2017\170551-004\Civil\Drawings\170551-004-C112-STANDARD WATER SERVICE DETAIL



On rare occasions Contractor to furnish and install PVC plugs in the inlet & outlet meter coupling nuts when meter is not set at the time of installation.

Minimum length of pigtail on consumer side is 36" of copper tubing from meter set.
 Bore hole under paving shall be a maximum of 2" in diameter and a minimum of 36" below top of pavement.
 Service Saddles are required on all mains.
 Meter boxes will be located on each lot to be served, as indicated in the SPECIAL PROVISIONS

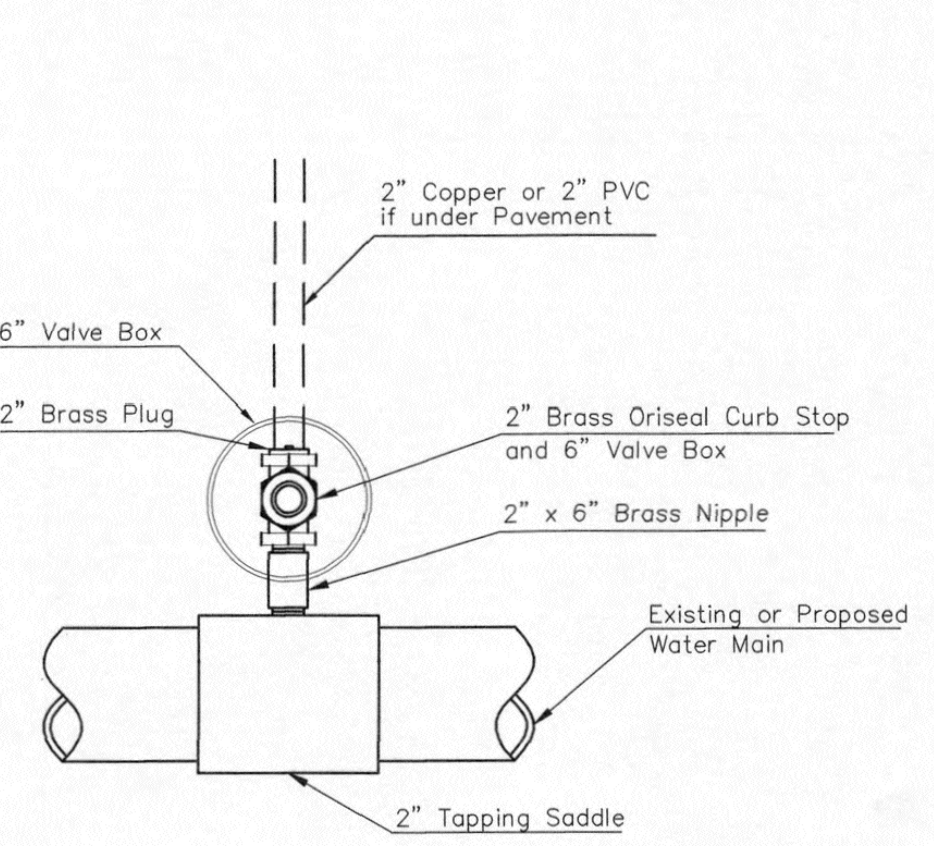
TYPICAL 1" METER SETTING



NOT TRAFFIC RATED RING & LID FOR 1" METER BOX

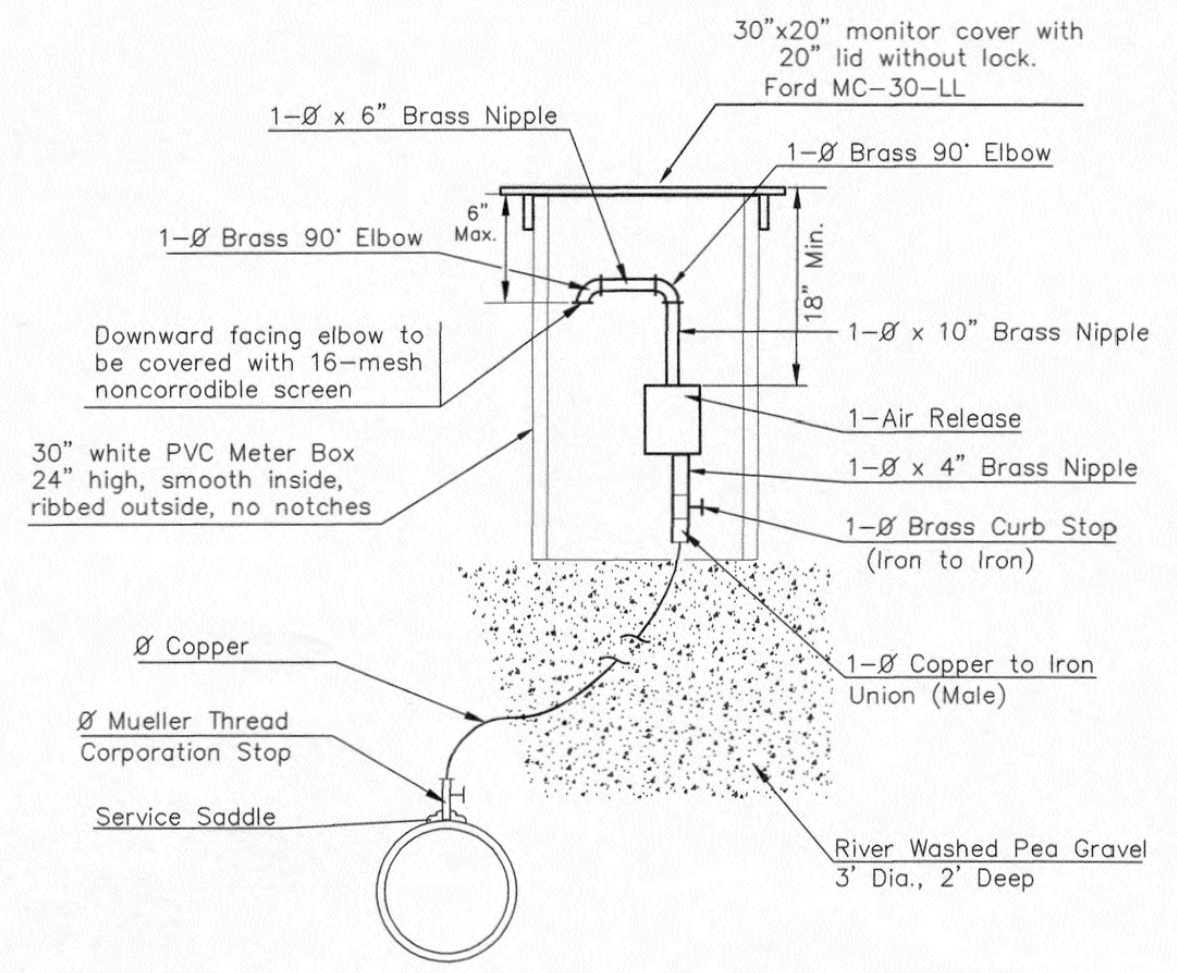
- 1 - \emptyset Mueller Thread Corporation Stop
- 1 - \emptyset Type "K" Copper Tubing
- 1 - \emptyset Copper to Iron Union (Male)
- 1 - \emptyset Brass Curb Stop (Iron to Iron)
- 2 - \emptyset x4" Brass Nipple
- Air Release
- 2 - \emptyset Brass Elbows (90°)
- 1 - 1"x6" Brass Nipple
- 1 - 30" Monitor Cover
- 1 - 20" Meter Lid

NOTE:
 THE 1 1/2" AIR RELEASE ASSEMBLY WILL TYPICALLY BE USED ON WATER MAINS 24" AND SMALLER, AS SPECIFICALLY DESIGNATED IN THE PLANS. COMBINATION AIR RELEASE ASSEMBLIES WILL BE SPECIFICALLY DESIGNED FOR PROJECTS WITH LARGER MAINS, AND WILL BE INCLUDED IN THE PLANS.

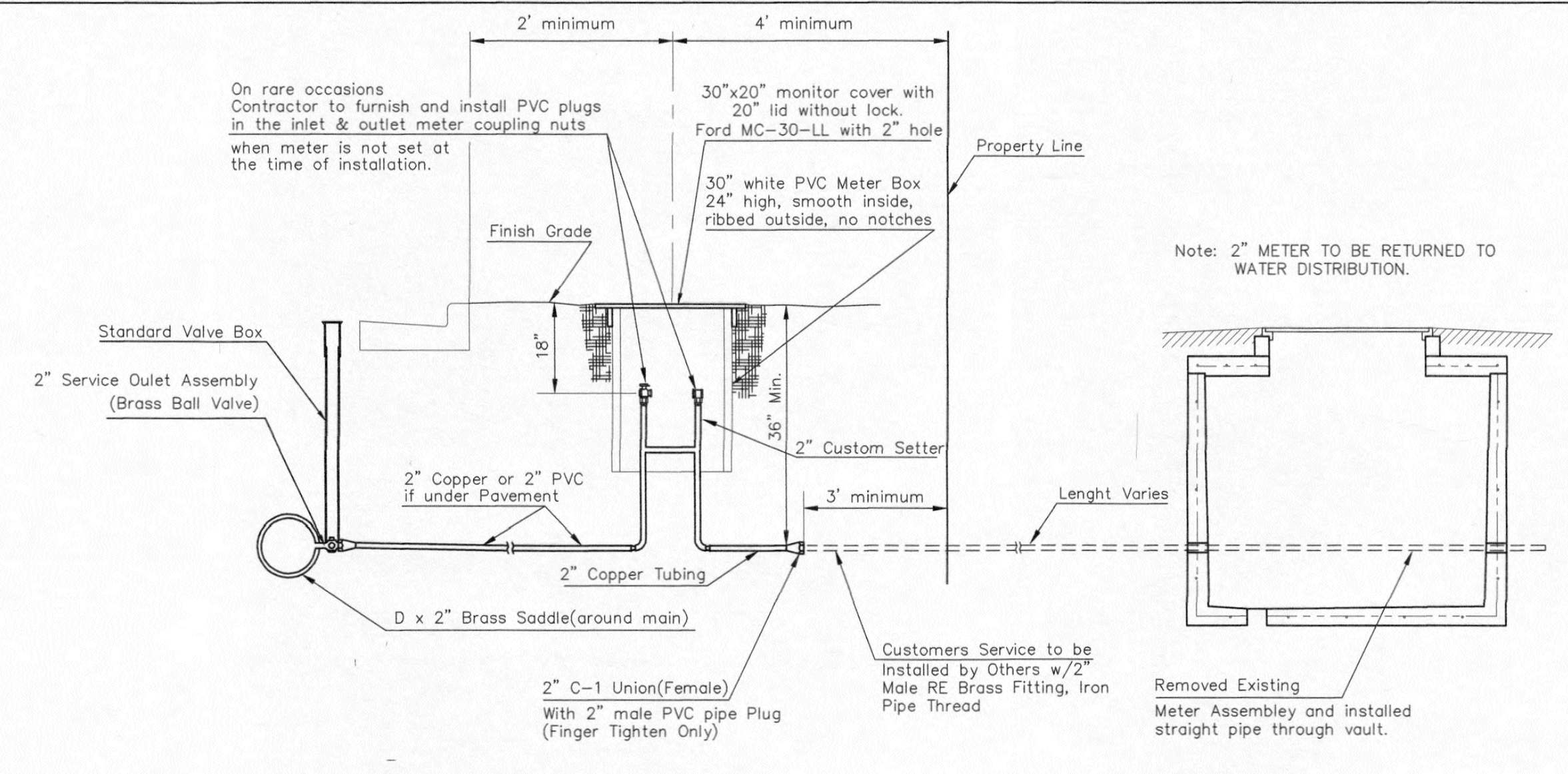


Note: Where the 2" Service Outlet Assembly is to be used to connect a 2" main to another main, the 2" valve shall be a 2" IPT Gate Valve. 2" ball or globe valves shall not be approved for this use.

2" SERVICE OUTLET ASSEMBLY TOP VIEW

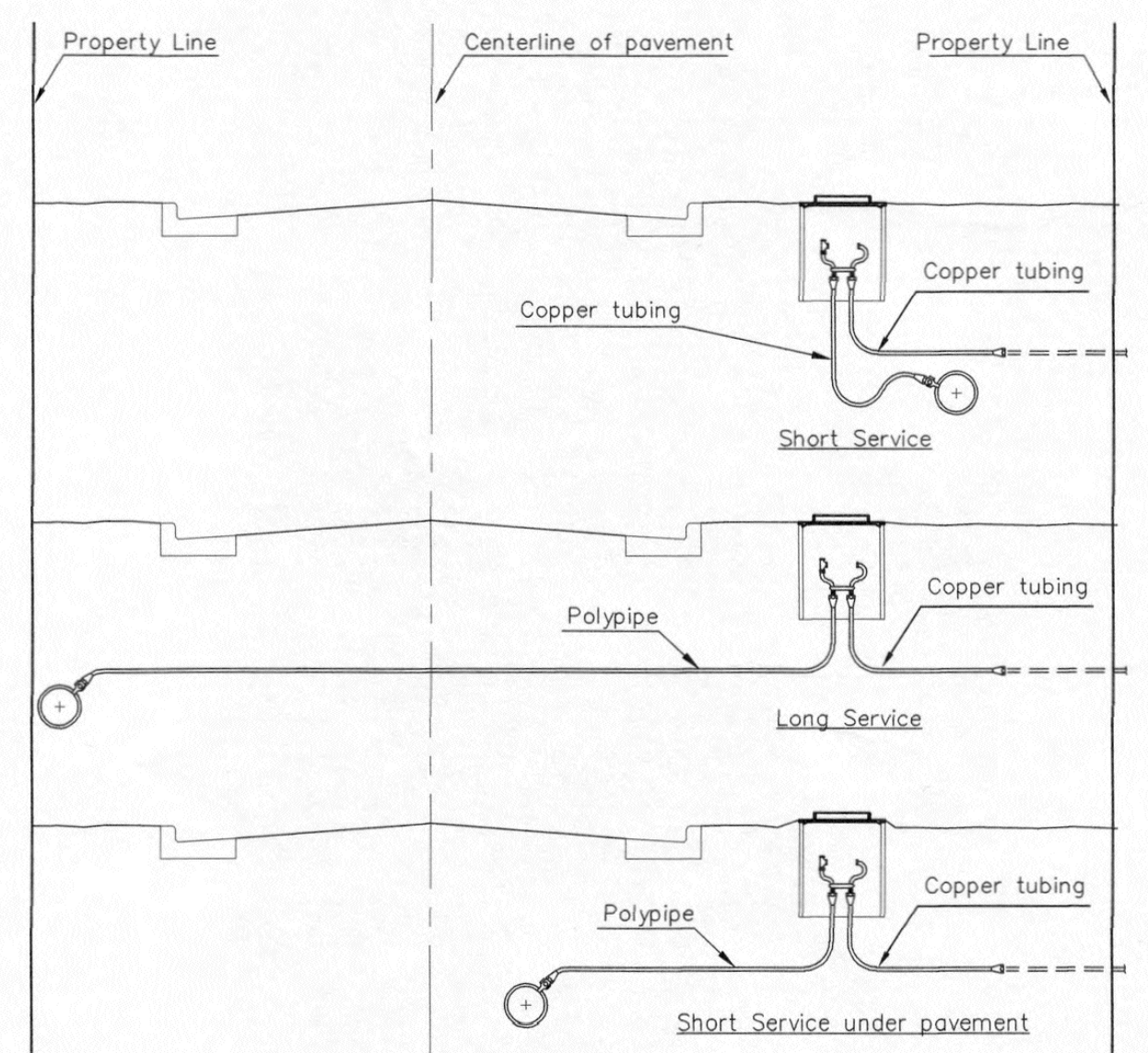


MATERIALS FOR 1" or 2" AIR RELEASE ASSEMBLY $\emptyset = 1" \text{ or } 2"$



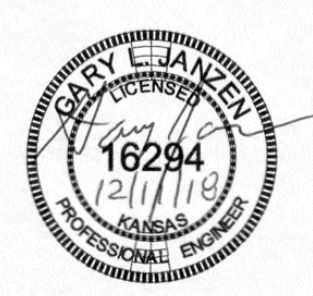
TYPICAL 2" METER SETTING TYPICAL 2" METER SETTING INVOLVING EXISTING 2" METER VAULT

Note: ONE VALVE STEM EXTENSION FOR EACH VALVE BURIED GREATER THAN 5'.
 Note: 2" METER TO BE RETURNED TO WATER DISTRIBUTION.
 Note: ONE VALVE STEM EXTENSION FOR EACH VALVE BURIED GREATER THAN 5'.



SERVICE TYPES

REVISED: DECEMBER 2018 TM		BRASS NIPPLE LENGTH TO 10" ON THE 1" OR 2" AIR RELEASE ASSEMBLY	
 CITY OF WICHITA PUBLIC WORKS & UTILITIES ENGINEERING DIVISION		STANDARD WATER SERVICE DETAIL CITY ENGINEER GARY JANZEN, P.E.	
		PROJECT NUMBER 448-2019-017973	OCA NUMBER 735652
CITY ENGINEER'S OFFICE CITY HALL - SEVENTH FLOOR 455 NORTH MAIN STREET WICHITA, KANSAS 67202-1620 (316) 268-4501		SHEET	



WL-102



WATER DISTRIBUTION SYSTEM IMPROVEMENTS TO SERVE THE VILLAS AT OAK CREEK
 GARY JANZEN, P.E. - CITY ENGINEER
 CITY OF WICHITA PROJECT NO. 448-2019-017973

Issue:	
JOB NO.	35-170551-004-0042
DATE	JULY 2019
PM	RWG
DESIGNED BY	TBK
DRAWN BY	CSL, KTD
CHECKED BY	RWG
STANDARD WATER SERVICE DETAIL	