

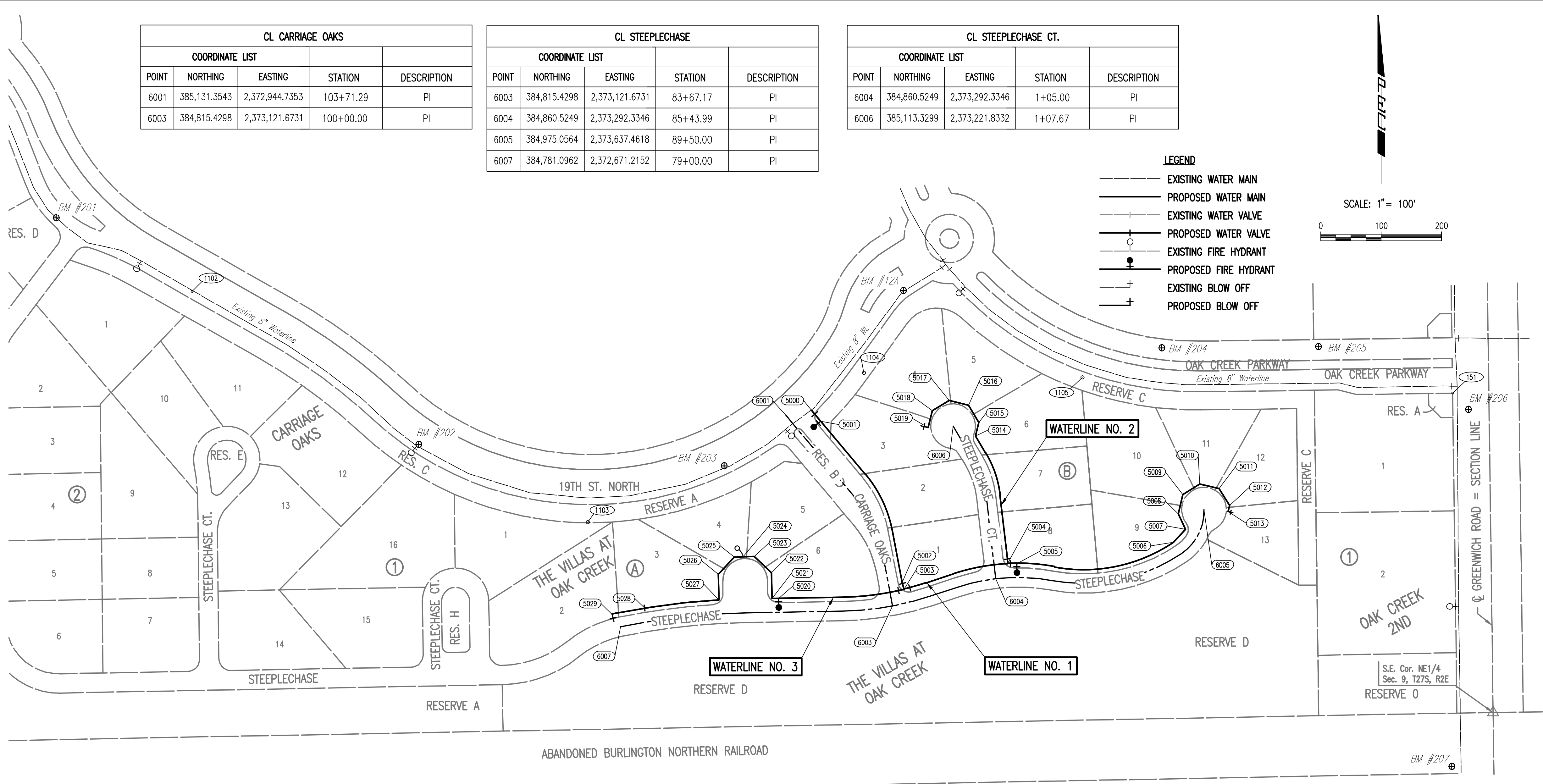
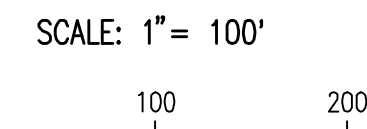
CL CARRIAGE OAKS				
COORDINATE LIST				
POINT	NORTHING	EASTING	STATION	DESCRIPTION
6001	385,131.3543	2,372,944.7353	103+71.29	PI
6003	384,815.4298	2,373,121.6731	100+00.00	PI

CL STEEPLECHASE				
COORDINATE LIST				
POINT	NORTHING	EASTING	STATION	DESCRIPTION
6003	384,815.4298	2,373,121.6731	83+67.17	PI
6004	384,860.5249	2,373,292.3346	85+43.99	PI
6005	384,975.0564	2,373,637.4618	89+50.00	PI
6007	384,781.0962	2,372,671.2152	79+00.00	PI

CL STEEPLECHASE CT.				
COORDINATE LIST				
POINT	NORTHING	EASTING	STATION	DESCRIPTION
6004	384,860.5249	2,373,292.3346	1+05.00	PI
6006	385,113.3299	2,373,221.8332	1+07.67	PI

LEGEND

- EXISTING WATER MAIN
- PROPOSED WATER MAIN
- EXISTING WATER VALVE
- PROPOSED WATER VALVE
- EXISTING FIRE HYDRANT
- PROPOSED FIRE HYDRANT
- EXISTING BLOW OFF
- PROPOSED BLOW OFF



PL No. 151
 1/2" REBAR WITH PEC CONTROL CAP (PROPERTY CORNER) +/- 0.2' BELOW GROUND ON THE SOUTHWEST CORNER OF THE INTERSECTION OF OAK CREEK PKWY AND N GREENWICH RD.
 N: 385167.89, E: 2374049.30
 1. 15.0' NORTH TO THE SOUTH CURB LINE OF E OAK CREEK PKWY.
 2. 25.5' EAST TO THE WEST CURB LINE ALONG N GREENWICH RD.

PL No. 1101 - (NOT SHOWN)
 1/2" REBAR WITH PEC CONTROL CAP SET FLUSH WITH GROUND ON THE SOUTH SIDE OF E 19TH ST. AND ON THE WEST END OF THE BERM SOUTH OF THE ROUND-ABOUT AT E 19TH ST AND CHATEAU PKWY.
 N: 385,657.03, E: 2,371,578.30
 1. 49.1' NORTH TO A CHISELED "X" CUT ON THE SOUTHEAST CORNER OF THE CURB INLET.
 2. 77.8' NORTHEAST TO CHISELED "X" CUT ON CENTER OF THE WEST END OF THE CURB ISLAND SOUTHEAST OF THE ROUND-ABOUT

PL No. 1102
 1/2" REBAR WITH PEC CONTROL CAP SET FLUSH WITH GROUND ON THE SOUTH SIDE OF EAST 19TH STREET AND EAST OF THE PROPOSED VERANDA STREET.
 N: 385,336.40, E: 2,371,961.09
 1. 96.6' WEST-NORTHWEST TO THE TOP BOLT OF A FIRE HYDRANT.
 2. 3.45' NORTH TO A CHISELED "X" CUT IN THE TOP OF THE SOUTH CURB LINE ALONG 19TH STREET.

PL No. 1103
 1/2" REBAR WITH PEC CONTROL CAP SET FLUSH WITH GROUND ON THE SOUTH SIDE OF E 19TH ST. AND ON THE WEST END OF THE BERM WEST OF THE PROPOSED N CARRIAGE OAKS ST.
 N: 384,954.16, E: 2,372,616.65
 1. 43.4' NORTH TO A CHISELED "X" CUT ON THE SOUTH CURB LINE OF 19TH ST.
 2. 49.8' NORTHWEST TO THE SOUTHEAST BOLT OF A 12" X 24" BURIED ELECTRICAL BOX.

PL No. 1104
 1/2" REBAR WITH PEC CONTROL CAP SET FLUSH WITH GROUND ON THE SOUTHEAST SIDE OF E 19TH ST. AND ON THE NORTH END OF THE BERM SOUTH OF THE ROUND-ABOUT AT E 19TH ST. AND OAK CREEK PKWY.
 N: 385,201.40, E: 2,373,073.86
 1. 34.70' NORTHWEST TO A CHISELED "X" CUT ON THE TOP OF THE SOUTH/EAST CURB LINE ALONG E 19TH ST.
 2. 51.0' SOUTHWEST TO THE BASE OF THE "ROUND-ABOUT AHEAD" SIGN POST.

PL No. 1105
 1/2" REBAR WITH PEC CONTROL CAP SET FLUSH WITH GROUND ON THE SOUTH SIDE OF OAK CREEK PKWY.
 N: 385,194.10, E: 2,373,436.08
 1. 40.4' NORTHWEST TO A CHISELED "X" CUT IN THE EAST SIDE OF THE CONCRETE BASE OF A STREET LIGHT POLE.
 2. 23.8' NORTH TO A CHISELED "X" CUT ON THE TOP OF THE SOUTH CURB LINE ALONG E 19TH ST.

BENCH MARK LIST

- BM #12A - SQUARE CUT IN THE CENTER FACE OF THE CURB INLET ON THE SOUTH CURB LINE OF 19TH ST. N. +/- 100' WEST OF OAK CREEK PARKWAY, WEST OF ROUNDABOUT CIRCLE. FROM PEC PROJECT #170638-000 CARRIAGE OAKS ADDITION PLAT. ELEV.= 1380.58 (NAVD88)
- BM #16 - (NOT SHOWN) SQUARE CUT ON THE SOUTH TOP OF CURB IN REMINGTON PLACE ADDITION. NEAR THE NORTHWEST CORNER OF LOT 5, BLOCK 1 OAK CREEK 2ND ADDITION. +/- 100' WEST OF CRANBROOK STREET. FROM PEC PROJECT # 170638-000 CARRIAGE OAKS ADDITION PLAT. ELEV.= 1395.23 (NAVD88)
- BM #201 - SQUARE CUT ON THE NORTHEAST SIDE OF A CONCRETE LIGHT POLE BASE ON THE SOUTH SIDE OF 19TH ST. N AND WEST OF N VERANDA ST. +/- 3' NORTHEAST TO THE SOUTH CURB LINE ALONG 19TH ST. N. +/- 68' NORTHEAST TO THE BASE OF THE "ROUNDABOUT AHEAD" SIGN POST. ELEV.= 1399.86 (NAVD88)
- BM #202 - SQUARE CUT ON THE SOUTH TOP OF CURB ALONG 19TH ST. N. NEAR THE SOUTHWEST CORNER OF LOT 4 BLOCK 3, OAK CREEKS 2ND ADDITION. +/- 5' SOUTHWEST TO THE TOP BOLT OF A FIRE HYDRANT. +/- 55' WEST TO THE CENTER OF A BURIED ELECTRIC HAND BOX. +/- 64' NORTHWEST TO THE BASE OF A LIGHT POLE. ELEV.= 1394.77 (NAVD88)
- BM #203 - SQUARE CUT ON THE SOUTH TOP OF CURB ALONG 19TH ST. N. NEAR THE SOUTHEAST CORNER OF LOT 3 BLOCK 2, OAK CREEK 2ND ADDITION. +/- 50' NORTHEAST TO THE TOP BOLT ON A FIRE HYDRANT. +/- 40' WEST OF N CARRIAGE OAKS ST. ELEV.= 1389.93 (NAVD88)
- BM #204 - SQUARE CUT ON THE NORTH TOP OF CURB ALONG 19TH ST. N. NEAR THE SOUTHWEST CORNER OF LOT 3 BLOCK 1 OAK CREEK 4TH ADDITION. +/- 17' EAST-NORTHEAST TO THE BASE OF A LIGHT POLE. +/- 24' NORTH TO THE TOP OF A TELEPHONE PEDESTAL. +/- 39' WEST-NORTHWEST TO THE BASE OF A "PEDESTRIAN CROSSING" SIGN POST. ELEV.= 1372.86 (NAVD88)
- BM #205 - SQUARE CUT IN THE CENTER OF THE TOP OF THE EAST INLET, ON THE NORTH SIDE OF 19TH ST. N., NEAR GREENWICH RD. +/- 12' EAST TO THE BASE OF A LIGHT POLE. +/- 72' SOUTH TO THE NORTHEAST CORNER OF RESERVE AREA "D" THE VILLAS AT OAK CREEK ADDITION. +/- 250' EAST TO THE WEST CURB LINE ALONG N GREENWICH RD. ELEV.= 1367.87 (NAVD88)
- BM #206 - SQUARE CUT IN THE CENTER OF A CURB INLET ON THE WEST SIDE OF N GREENWICH RD, AND SOUTH OF THE EAST ENTRANCE TO OAK CREEKS SUBDIVISION. +/- 27' NORTH-NORTHWEST TO THE BASE OF A WOOD LIGHT POLE. +/- 37' WEST TO THE SOUTH END OF THE STONE "OAK CREEKS" SIGN. +/- 51' NORTHWEST TO THE BASE OF THE "STOP" SIGN POST. ELEV.= 1363.66 (NAVD88)
- BM #207 - CITY OF WICHITA BRASS DISC ON THE SOUTH END OF THE WEST HEADWALL OF A RCB RUNNING EAST-WEST UNDER N GREENWICH RD. +/- 29' EAST TO THE WEST CURB LINE ALONG N GREENWICH RD. +/- 43' NORTH TO THE CENTERLINE OF THE GRAVEL PATH TO THE WEST (ABANDONED RR TRACKS). ELEV.= 1366.78 (NAVD88)

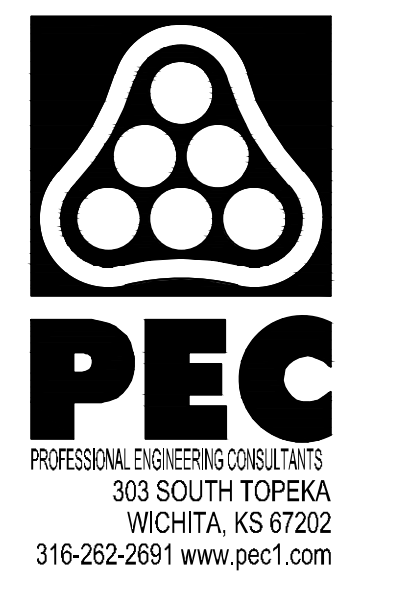
WATERLINE NO. 1				
COORDINATE LIST				
POINT	NORTHING	EASTING	STATION	DESCRIPTION
5000	385,139.4219	2,372,987.5938	0+00.00	TAPPING SLEEVE
5001	385,121.7135	2,373,002.4772	0+23.13	FIRE HYDRANT
5002	384,854.3994	2,373,137.6571	3+30.26	HORIZ. DEFLECTION
5003	384,843.0364	2,373,140.4333	3+41.96	8" X 8" TEE
5004	384,885.2007	2,373,312.1149	5+19.36	8" X 6" TEE
5005	384,885.5927	2,373,327.6059	5+34.86	FIRE HYDRANT
5006	384,921.1004	2,373,587.1065	8+04.06	BEND
5007	384,942.4546	2,373,606.9008	8+33.17	BEND
5008	384,968.0932	2,373,595.0293	8+61.43	BEND
5009	385,000.1370	2,373,602.5338	8+94.34	BEND
5010	385,017.4889	2,373,630.4986	9+27.25	BEND
5011	385,009.9844	2,373,662.5423	9+60.16	BEND
5012	384,982.0196	2,373,679.8942	9+93.07	BEND
5013	384,971.7833	2,373,677.4969	10+03.58	BLOWOFF ASSEMBLY

WATERLINE NO. 2				
COORDINATE LIST				
POINT	NORTHING	EASTING	STATION	DESCRIPTION
5004	384,885.2007	2,373,312.1149	0+00.00	8" X 6" TEE
5014	385,096.9091	2,373,258.6830	2+21.71	BEND
5015	385,119.6914	2,373,264.3601	2+45.18	BEND
5016	385,147.8992	2,373,247.4060	2+78.10	BEND
5017	385,155.8568	2,373,215.4717	3+11.01	BEND
5018	385,138.9027	2,373,187.2640	3+43.92	BEND
5019	385,110.9635	2,373,180.3019	3+73.00	BLOWOFF ASSEMBLY

WATERLINE NO. 3				
COORDINATE LIST				
POINT	NORTHING	EASTING	STATION	DESCRIPTION
5003	384,843.0364	2,373,140.4333	0+00.00	8" X 8" TEE
5020	384,827.9188	2,372,932.8362	2+08.67	FIRE HYDRANT
5021	384,827.7102	2,372,921.8382	2+19.67	BEND
5022	384,870.4515	2,372,921.0273	2+62.42	BEND
5023	384,897.2594	2,372,892.4584	3+01.60	BEND
5024	384,896.6746	2,372,874.0677	3+20.20	AIR RELEASE
5025	384,896.2134	2,372,859.5643	3+34.51	BEND
5026	384,867.9666	2,372,833.0586	3+73.24	BEND
5027	384,825.2329	2,372,834.1672	4+15.99	BEND
5028	384,811.7465	2,372,710.9509	5+40.00	VALVE (SPECIAL)
5029	384,801.4152	2,372,656.9046	5+95.04	BLOWOFF ASSEMBLY

6000 = COORDINATE POINT NO.
 SEE SHEET NO. 3 FOR PLAT COORDINATES

Sheet 10-26-2019, PM by KURTIS DEKAT
 Plot Scale: 1" = 100' (11/10/2019 11:07:02 AM)
 U:\Wichita-Civil\2017\170638-000\Drawings\170638-000-C104-WATERLINE BUBBLE MAP



WATER DISTRIBUTION SYSTEM IMPROVEMENTS TO SERVE THE VILLAS AT OAK CREEK
 GARY JANZEN, P.E. - CITY ENGINEER
 CITY OF WICHITA PROJECT NO. 448-2019-017973

Issue:	
JOB NO.	35-170551-004-0042
DATE	JULY 2019
PM	RWG
DESIGNED BY	TBK
DRAWN BY	CSL, KTD
CHECKED BY	RWG

WATERLINE BUBBLE MAP
C104