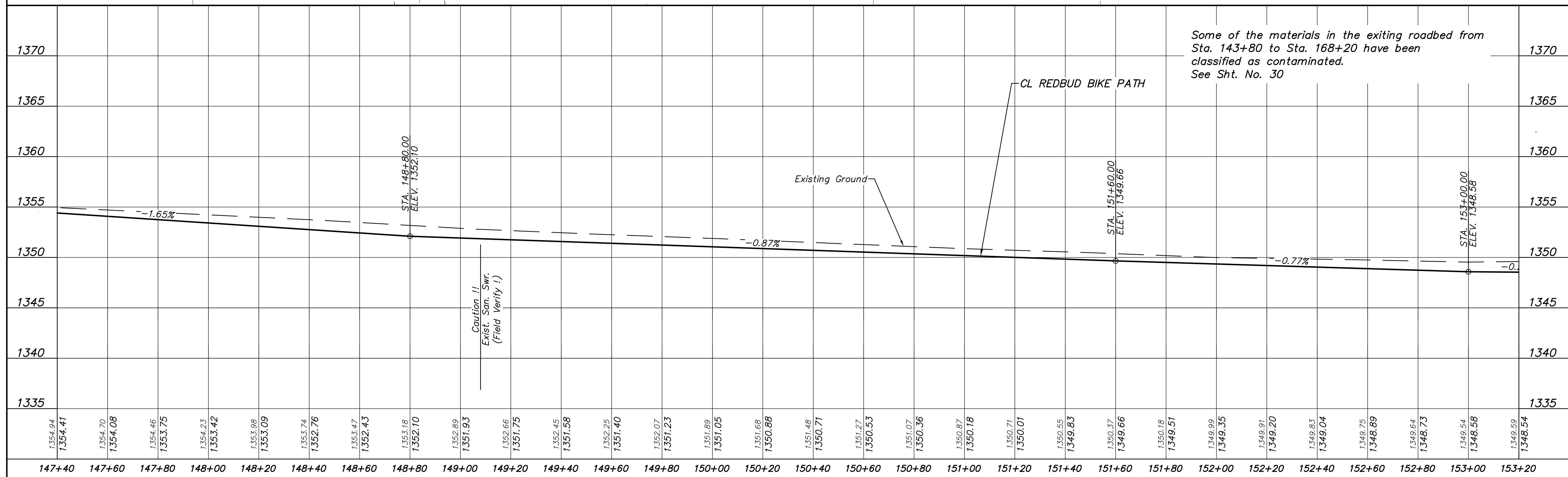


Sta. 149+30.00, 40.87' Lt.  
 Construct Neighborhood Connection, W=6'  
 w/ 4" Surfacing Material (Special)  
 N=1697261.35  
 E=1693830.69  
 See Sht. No. 90

**CAUTION !!**  
 Existing Sanitary Sewer

**NOTE:**  
 TREE REMOVAL NOT ALLOWED.  
 TRIM WITH APPROVAL OF ENGINEER.



REDBUD BIKE PATH EAST K-96 TO 159TH STREET EAST	PLAN & PROFILE	City of Wichita, Kansas CARY JANZEN, P.E. - CITY ENGINEER C.O.N. Project #472-85360, C.C.A. #707125
POE & ASSOCIATES, INC. CONSULTING ENGINEERS 544 West Douglas Avenue Wichita, KS 67203 Phone 316/685-4114 FAX 316/685-4444	Professional Engineer 24211 KANSAS	Engineer: T. EVANS Designer: J. UNRUH Dwg: P:\02027 Redbud Wichita\DWG\02027-BASE-tal grade.dwg Poe Job No: 102127 Date: SEPTEMBER 2018
Approved	By	Date
No.		
14	of	222