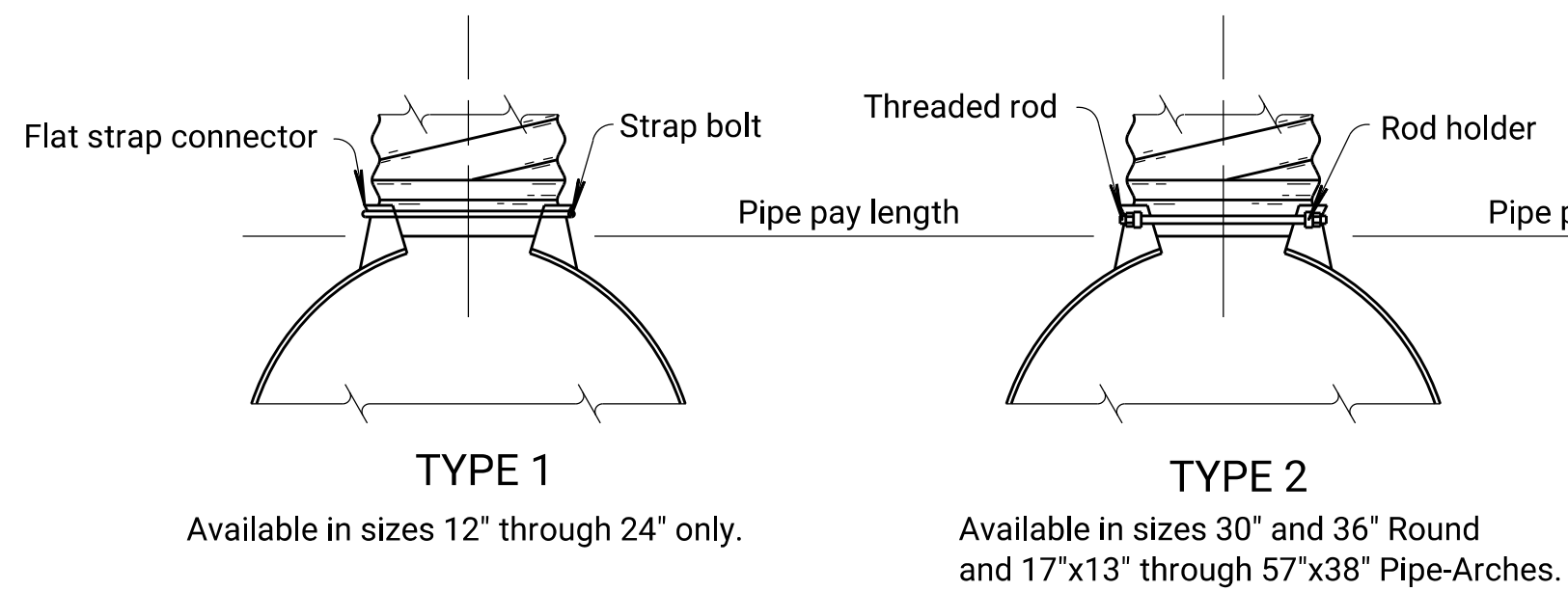
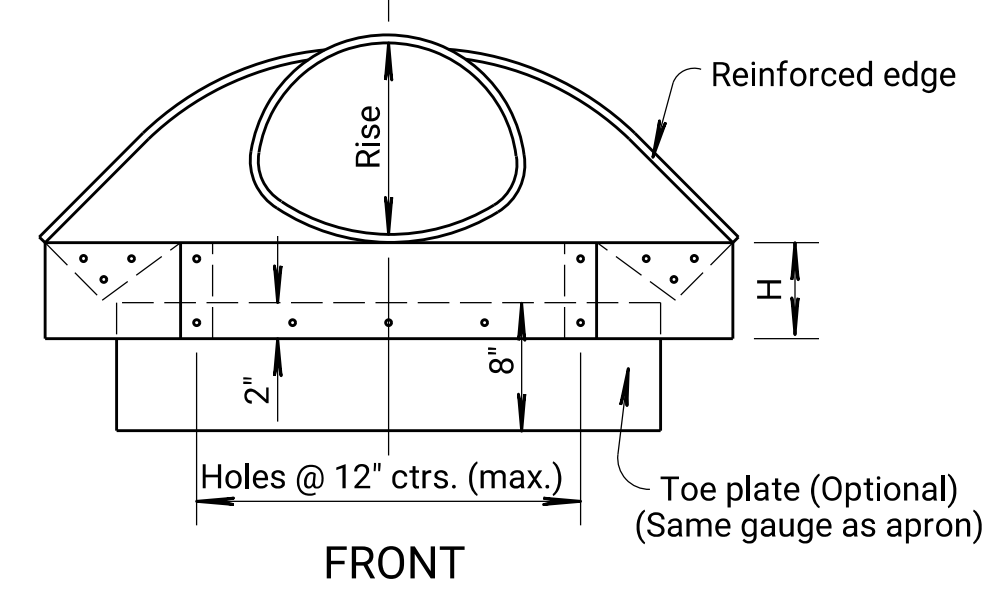
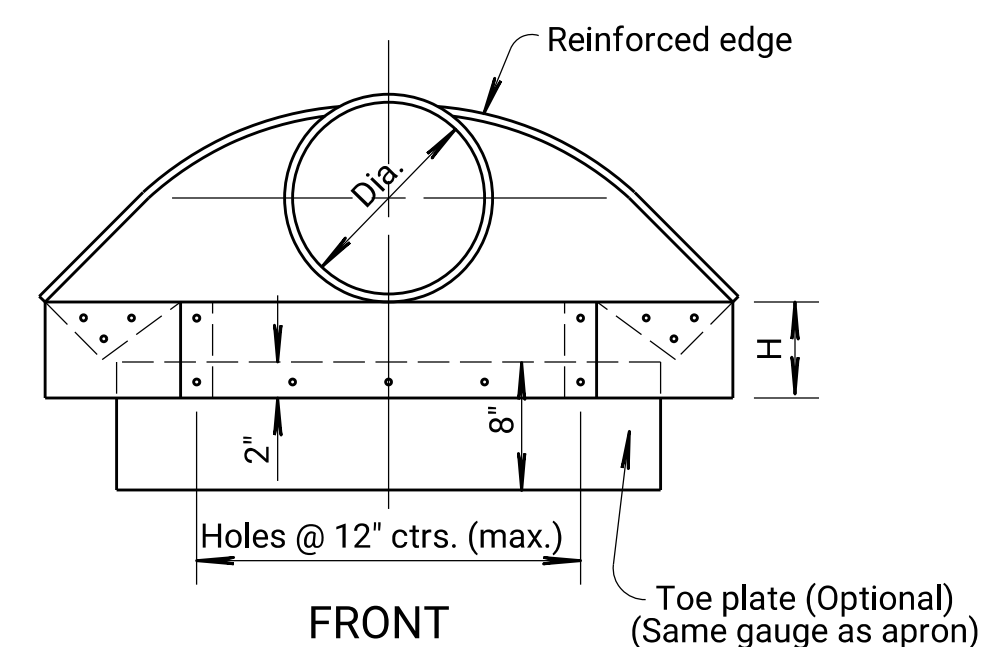
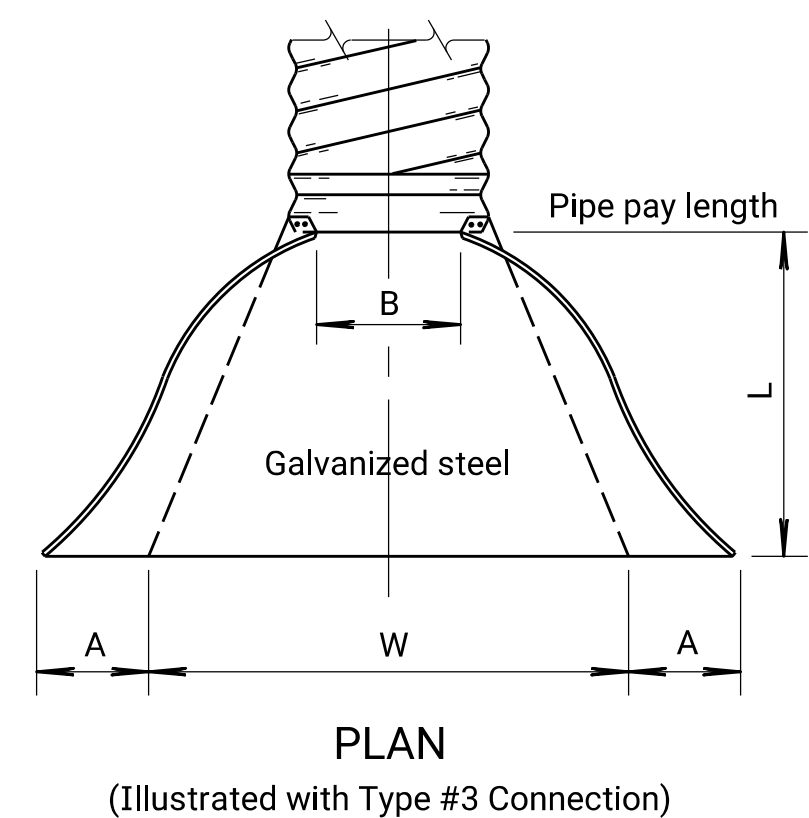
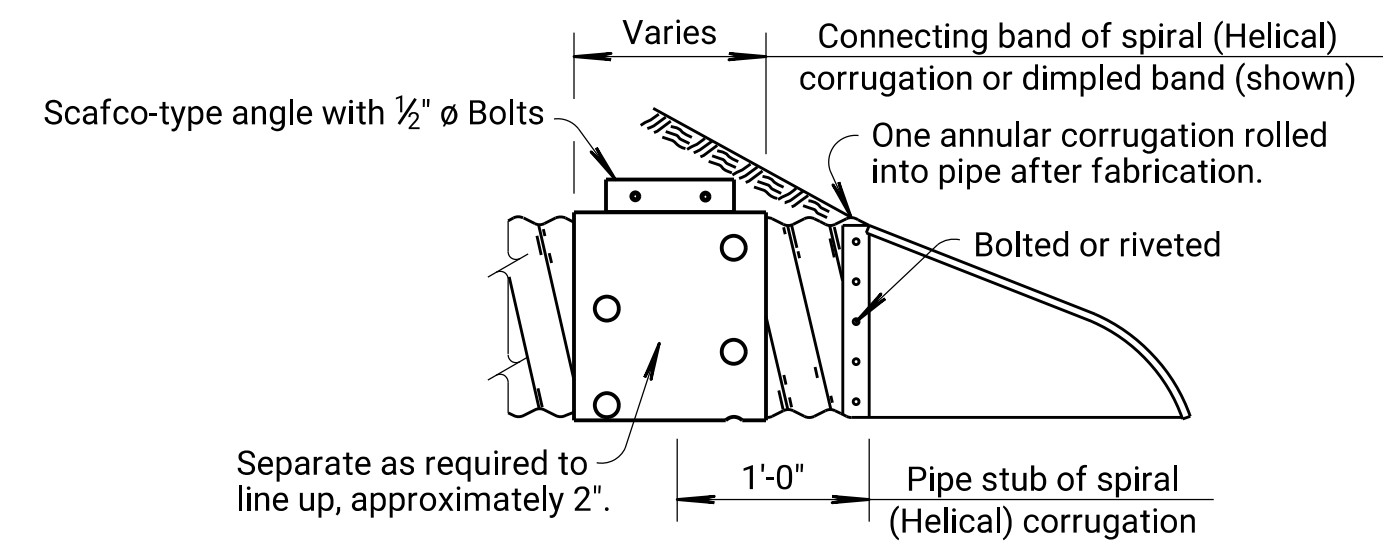


Note to Designer: KDOT Pipe Policy provides guidance in identifying the prohibited and/or restricted uses of CSP, ACSP, PEP, PVCP, CAP & RCP. Provide end sections of the same type and coating as the pipe. Exceptions to this are noted in the Standard Specifications. Refer to the KDOT Design Manual, Volume I (Part C), Road Section, "Elements of Drainage & Culvert Design" for structural pipe design information which includes: corrugations, sizes, gauges, maximum/minimum fill heights and classes of pipe.



Note: Type 3 connection may be furnished instead of Type 1 or Type 2 for smaller round or arch pipe.

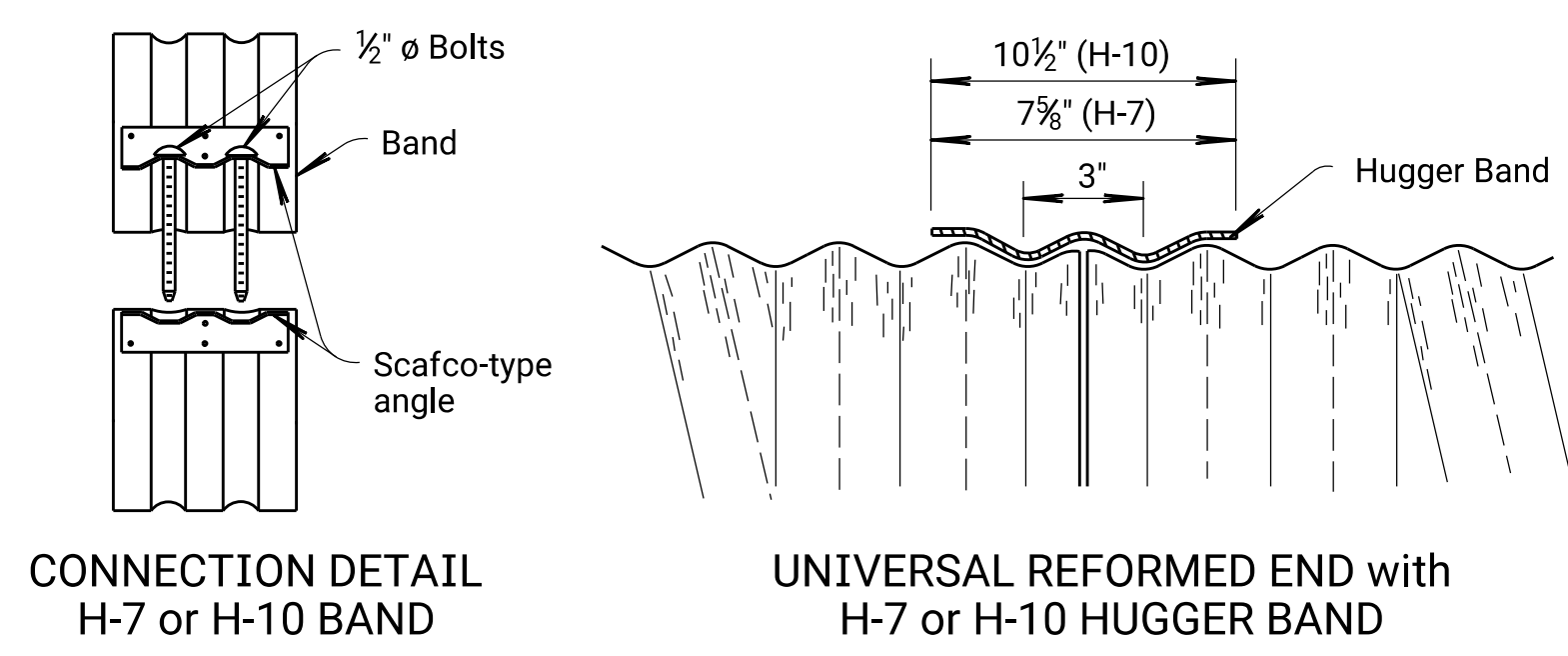


Thickness CSP/ACSP	Thickness CAP	Gauge
0.064"	0.060"	16 ga.
0.079"	0.075"	14 ga.
0.109"	0.105"	12 ga.
0.138"	0.135"	10 ga.
0.168"	0.164"	8 ga.

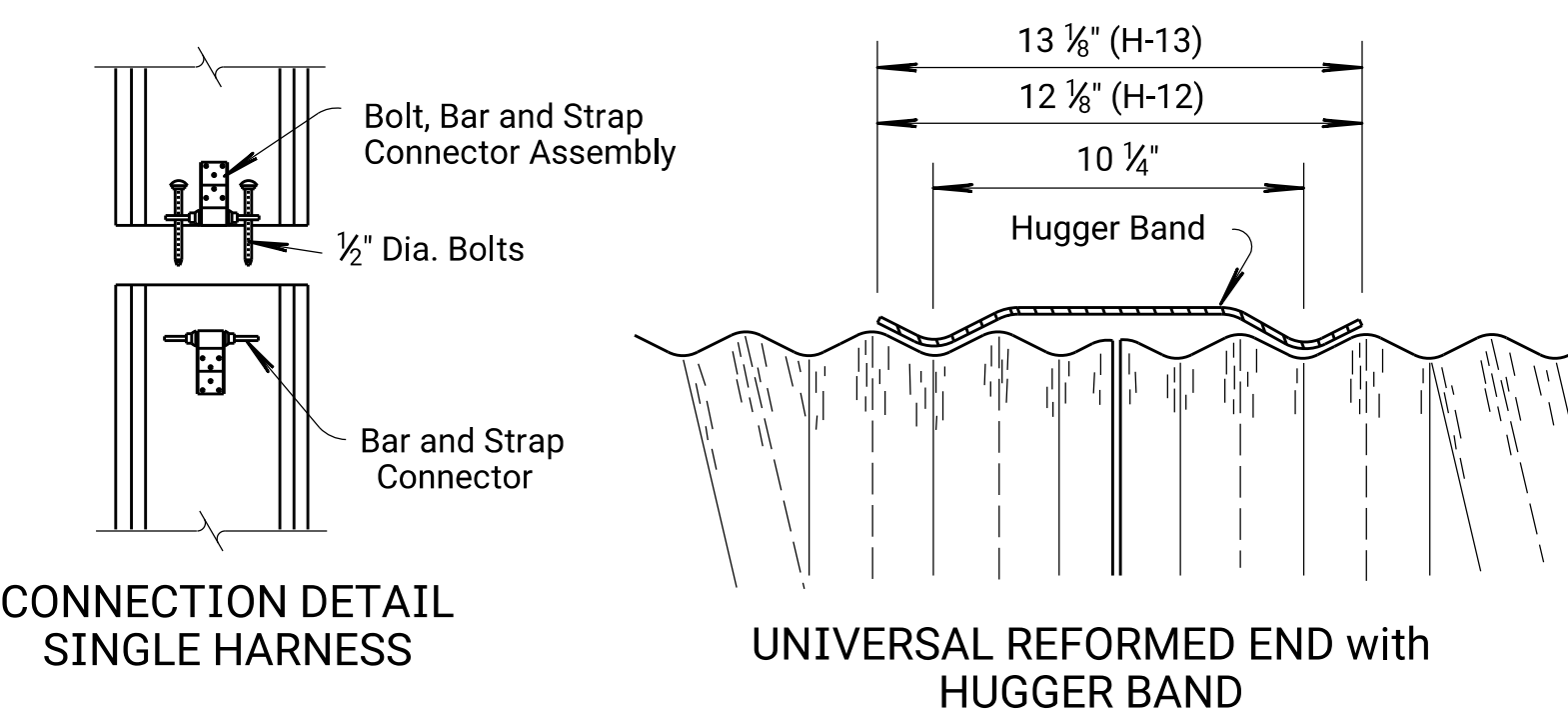
Pipe Dia. (In.)	CS, ACS or CA Gauge	Dimensions in Inches					Approx. Slope
		A (min.)	B (max.)	H (min.)	L (±2")	W (min.)	
12"	16	5	7	6	21	22	2 1/2: 1
15"	16	6	8	6	26	28	2 1/2: 1
18"	16	7	10	6	31	34	2 1/2: 1
21"	16	8	12	6	36	40	2 1/2: 1
24"	16	9	13	6	41	46	2 1/2: 1
30"	14	11	16	8	51	55	2 1/2: 1
36"	14	13	19	9	60	70	2 1/2: 1
42"	12	15	25	10	69	82	2 1/2: 1
48"	12	17	29	12	78	88	2 1/2: 1
54"	12	17	33	12	84	100	2 1/2: 1
60"	12/10	17	36	12	87	112	2: 1
66"	12/10	17	39	12	87	118	2: 1
72"	12/10	17	44	12	87	120	2: 1
78"	12/10	17	48	12	87	130	1 1/2: 1
84"	12/10	17	52	12	87	136	1 1/2: 1
90"	12/10	17	58	12	87	142	1 1/2: 1
96"	12/10	17	58	12	87	144	1 1/2: 1

Bid Designation Sq. Ft.	Nom. W.W. Area Sq. Ft.	Pipe Arch		Dimensions in Inches 2 1/2" x 1/2" Corrugations					Dimensions in Inches 3" x 1" or 5" x 1" Corr.					Approx. Slope	
		Span & Rise	CS, ACS or CA Gauge	A (min.)	B (max.)	H (min.)	L (±2")	W (min.)	CS, ACS or CA Gauge	A (min.)	B (max.)	H (min.)	L (±2")		W (min.)
1.0	1.1	17" x 13"	16	5	9	6	20	28							2 1/2: 1
1.5	1.6	21" x 15"	16	6	11	6	24	34							2 1/2: 1
2.0	2.2	24" x 18"	16	7	12	6	28	40							2 1/2: 1
2.5	2.9	28" x 20"	16	7	16	6	32	46							2 1/2: 1
3.0 or 4.0	4.5	35" x 24"	14	9	16	6	39	58							2 1/2: 1
5.0 or 6.0	6.5	42" x 29"	14	11	18	7	46	73							2 1/2: 1
7.0 or 8.5	8.9	49" x 33"	12	12	21	9	53	82							2 1/2: 1
10.0 or 11.0	11.7	53" x 41"							12	17	26	12	63	88	2: 1
10.0 or 11.0	11.6	57" x 38"	12	16	26	12	62	88							2: 1
12.5 or 14.0	15.6	60" x 46"							12	17	36	12	70	100	2: 1
12.5 or 14.0	14.7	64" x 43"	12	17	30	12	69	100							2: 1
16.5	19.3	66" x 51"							12/10	17	36	12	70	112	2: 1
16.5	18.1	71" x 47"	12/10	17	36	12	77	112							1 1/2: 1
21.0	23.2	73" x 55"							12/10	17	36	12	77	124	1 1/2: 1
21.0	21.9	77" x 52"	12/10	17	36	12	77	124							1 1/2: 1
25.0	27.4	81" x 59"							12/10	17	44	12	77	136	1 1/2: 1
25.0	26.0	83" x 57"	12/10	17	44	12	77	130							1 1/2: 1
32.0	32.1	87" x 63"							12/10	17	44	12	77	136	1 1/2: 1
36.0	37.0	95" x 67"							12/10	17	44	12	87	160	1 1/2: 1
42.0	42.4	103" x 71"							12/10	17	44	12	87	172	1 1/2: 1
47.0	48.0	112" x 75"							12/10	17	44	12	87	172	1 1/2: 1

(Information listed in these tables are nominal and may vary by manufacturer.)



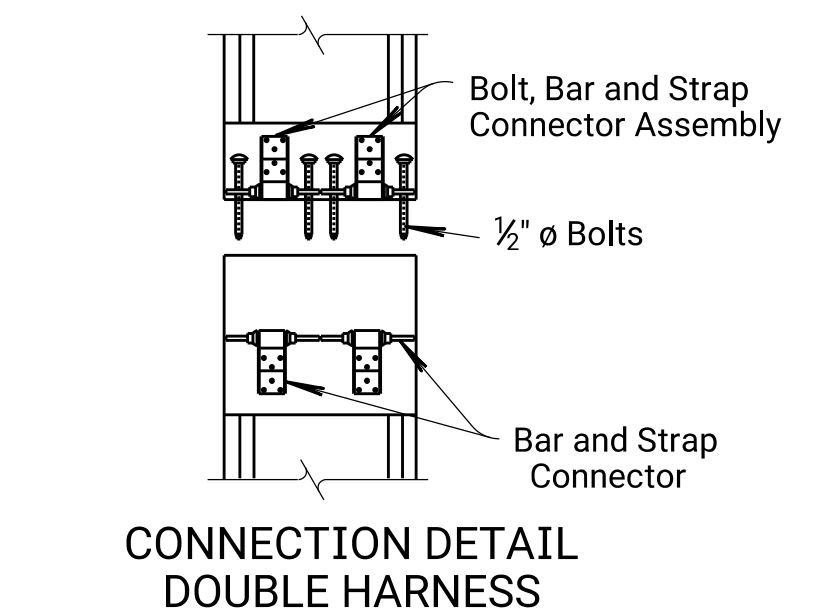
DETAILS FOR H-7 HUGGER BAND (12" thru 36") or H-10 HUGGER BAND (12" thru 120")



DETAILS FOR H-12 or H-13 HUGGER BAND

Pipe Dia. Inches	Minimum Gauge of Round Pipe				
	2 1/2" x 1/2" Corr.	3" x 1" Corr.	5" x 1" Corr.	2 1/2" x 1/2" Corr.	3" x 1" Corr.
	CSP or ACSP	CSP or ACSP	CSP or ACSP	CAP	CAP
12"	14			16	
15"	14			16	
18"	14			16	
21"	14			16	
24"	14			16	
30"	14			14	
36"	14			14	16
42"	14			12	16
48"	12	14	16	14	16
54"	12	14	16	14	16
60"	10	14	16	14	16
66"	10	14	16	14	16
72"	10	14	16	14	16
78"	8	14	14	14	14
84"	8	14	14	14	14
90"		14	14	14	14
96"		12	12	12	12
102"		12	12	12	12
108"		12	12	12	12
114"		12	12	12	12
120"		10	10	10	10

Bid Designation Sq. Ft.	Pipe Dimension Span & Rise	Sq. Ft.	Equiv. Round Pipe Diameter	Minimum Gauge of Arch Pipe				
				2 1/2" x 1/2" Corr.	3" x 1" Corr.	5" x 1" Corr.	2 1/2" x 1/2" Corr.	3" x 1" Corr.
				CSP or ACSP	CSP or ACSP	CSP or ACSP	CAP	CAP
1.0	17" x 13"	1.1	15"	14			16	
1.5	21" x 15"	1.6	18"	14			16	
2.0	24" x 18"	2.2	21"	14			16	
2.5	28" x 20"	2.9	24"	14			14	
3.0 or 4.0	35" x 24"	4.5	30"	14			14	
5.0 or 6.0	42" x 29"	6.5	36"	14			12	
7.0 or 8.5	49" x 33"	8.9	42"	14			12	
10.0 or 11.0	53" x 41"	11.7	48"		14			
10.0 or 11.0	57" x 38"	11.6	48"	12			10	
12.5 or 14.0	60" x 46"	15.6	54"		14			14
12.5 or 14.0	64" x 43"	14.7	54"	12			10	
16.5	66" x 51"	19.3	60"		14			14
16.5	71" x 47"	18.1	60"	10			8	
21.0	73" x 55"	23.2	66"		14			14
21.0	77" x 52"	21.9	66"	8				
25.0	81" x 59"	27.4	72"		14	12		12
25.0	83" x 57"	26.0	72"	8				
32.0	87" x 63"	32.1	78"		12	12		12
36.0	95" x 67"	37.0	84"		12	12		12
42.0	103" x 71"	42.4	90"		12	12		10
47.0	112" x 75"	48.0	96"		12	12		8
54.0	117" x 79"	54.2	102"		10	10		
60.0	128" x 83"	60.5	108"		10	10		
67.0	137" x 87"	67.4	114"		10	10		
74.0	142" x 91"	74.5	120"		8	8		



GENERAL NOTE for METAL PIPE
 Culvert "Type" listed may be CSP, ACSP, CAP, RCP, PVCP & PEP within guidelines of KDOT Pipe Policy for geographic location. More than one pipe "Type" may be acceptable for a design location with allowable types listed for each site.
 There shall be no payment for gain in pipe length due to fit of pipe at connecting band.
 When Hugger Bands are used, the H-7 Hugger Band may be used on circular pipes 36" diameter and smaller or pipe arches 42" x 29" and smaller. The H-10 Hugger Band may be used on 12" thru 120" pipe. The H-12 or H-13 Hugger Band are for pipe sizes larger than 36" diameter or 42" x 29" arch pipe.
 Pipe gauge listed in the tables on this sheet are minimum for E=750 p.s.i. soil. Pipe gauge will be determined for each site based on the Design Manual Volume I- Part C Fill Height Tables and shall be listed in the Pipe Culvert Summary. Gauges shown on this Standard Drawing are KDOT minimum and may not be industry minimum gauge.
 In geographic areas that allow CSP (24" or smaller arched or round pipe) for entrance and side road installation with less than 3,000 AADT, 16 gauge ACSP may be substituted for 14 gauge CSP.
 Aluminum or aluminized pipes or end sections shall be coated with an asphaltic paint when in contact with fresh concrete in accordance with the Standard Specifications.

NO.	DATE	REVISIONS	BY	APPD
4	9-10-09	Rev. Round and Arch tables, add. Alum.	S.W.K.	J.O.B.
3	1-20-09	Rev. Round Pipe Gauges	S.W.K.	J.O.B.
2	4-18-08	Rev. layout, details, tables and notes	S.W.K.	J.O.B.
1	4-27-98	Added pipe corrugation option note	R.J.S.	J.O.B.

KANSAS DEPARTMENT OF TRANSPORTATION

METAL END SECTION FOR ROUND & ARCH METAL CULVERTS (TYPE I) & PIPE GAUGE TABLES

RD660

FHWA APPROVAL 12-16-09	APPD. James O. Brewer
DESIGNED	QUANTITIES
DESIGN CK.	TRACE CK. King

KDOT Graphics Certified 03-29-2018

Drawn By: \$\$\$USERNAME\$\$\$ Plotted \$\$\$SYTIME\$\$\$
 File: \$\$\$SDGN\$\$\$

KDOT Graphics Certified