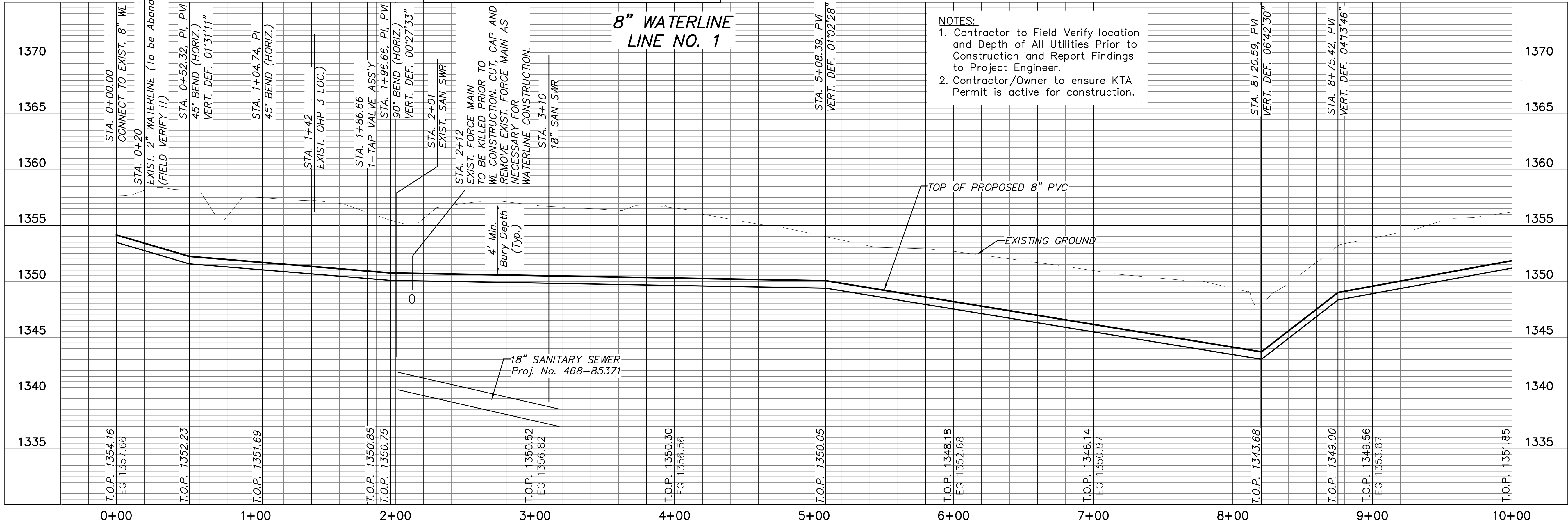


Benchmark #2  
 RR Spike in South face of HLP @ 1st set of poles E. of Founders Cir. (approx. 350'), 75' N. of CL Redbud Path.  
 Elev. 1357.68 NAVD88 - VERTICAL DATUM

TREE REMOVAL Proj. No. 468-85371



REDBUD BIKE PATH  
 8" WATERLINE  
 CITY OF WICHITA, KANSAS  
 GARY JANZEN, P.E. - CITY ENGINEER  
 C.O.W. Project #48-9805, O.C.A. #637401

POE & ASSOCIATES, INC.  
 CONSULTING ENGINEERS  
 544 W. Douglas Wichita, KS 67203  
 Phone 316/685-4114 FAX 316/685-4444

Engineer: R. GROTE  
 Designer: J. UNRUH  
 P. 102127 REBUD BIKE PATH (DWG) 102127 - REBUD BIKE PATH  
 Job No: 102127  
 Date: DECEMBER 2018

6 of 15