

BENCHMARKS:
 Benchmark Disk in top of curb north end of east curb return, adj. to the northwest cor., Lot 1, Block C, Sandcrest 4th Addn.
 Elev. = 1338.02 NAVD88

"□" cut in top of curb adj. to the southwest corner of Lot 42, Block B, Sandcrest 4th Addn.
 Elev. = 1327.78 NAVD88

"□" cut in face of curb inlet, east side of Anna St, between Lot 3 & Lot 4, Block C, Sandcrest 4th Addn.
 Elev. = 1327.09 NAVD88

WL Sta. 0+00, Begin Line 1
 BL Sta. 1+91.95, 26.00' Rt.
 Remove Existing 2" Blowoff Valve and Extend 8" Water Line Pipe East.
 Contractor to Verify Depth & Location of Existing 8" Water Line Prior to Construction.

WL Sta. 1+23.68, Line 1 =
 WL Sta. 0+00, Line 2
 BL Sta. 3+14.32, 26.00' Rt.
 1 - 8"x6" CIMJ Tee
 1 - 6" Valve Assy. (S)
 (Gate Valve)
 Valve Box Elev. = 1327.90

WL Sta. 1+80.31, Line 1
 BL Sta. 3+70.03, 26.00' Rt.
 1-Fire Hydrant Assembly
 (L = 5)
 Bury Line Elev. = 1327.80
 Valve Box Elev. = 1327.90

Baseline =
 26th St N
 BL Sta. 0+00 =
 26th Ct N
 (Lots 8-13, Block A)

WL Sta. 4+58.74, Line 1 =
 WL Sta. 0+00, Line 3
 BL Sta. 6+45.54, 26.00' Rt.
 1 - 8"x6" CIMJ Tee
 1 - 6" Valve Assy. (S)
 (Gate Valve)
 Valve Box Elev. = 1326.55

WL Sta. 5+15.72, Line 1
 BL Sta. 7+02.52, 26.00' Rt.
 1-Fire Hydrant Assembly
 (L = 5)
 Bury Line Elev. = 1326.20
 Valve Box Elev. = 1326.30

NOTE: Contractor shall maintain 10' min. horizontal separation between all water and sewer.

CAUTION!
 18" SWS Crossing

WL Sta. 7+13.63, Line 1
 BL Sta. 8+59.16, 25.00' Lt.
 1 - 8" CIMJ 11.25" Bend

WL Sta. 7+71.37, End Line 1
 BL Sta. 9+21.34, 25.00' Lt.
 Remove Proposed 2" Blowoff Valve and Connect to Proposed 8" Water Line Pipe East.
 Contractor to Verify Depth & Location of Existing 8" Water Line Prior to Construction.

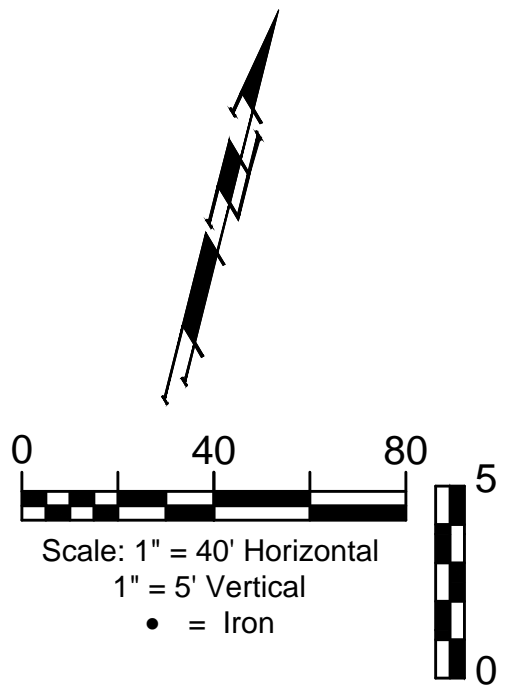
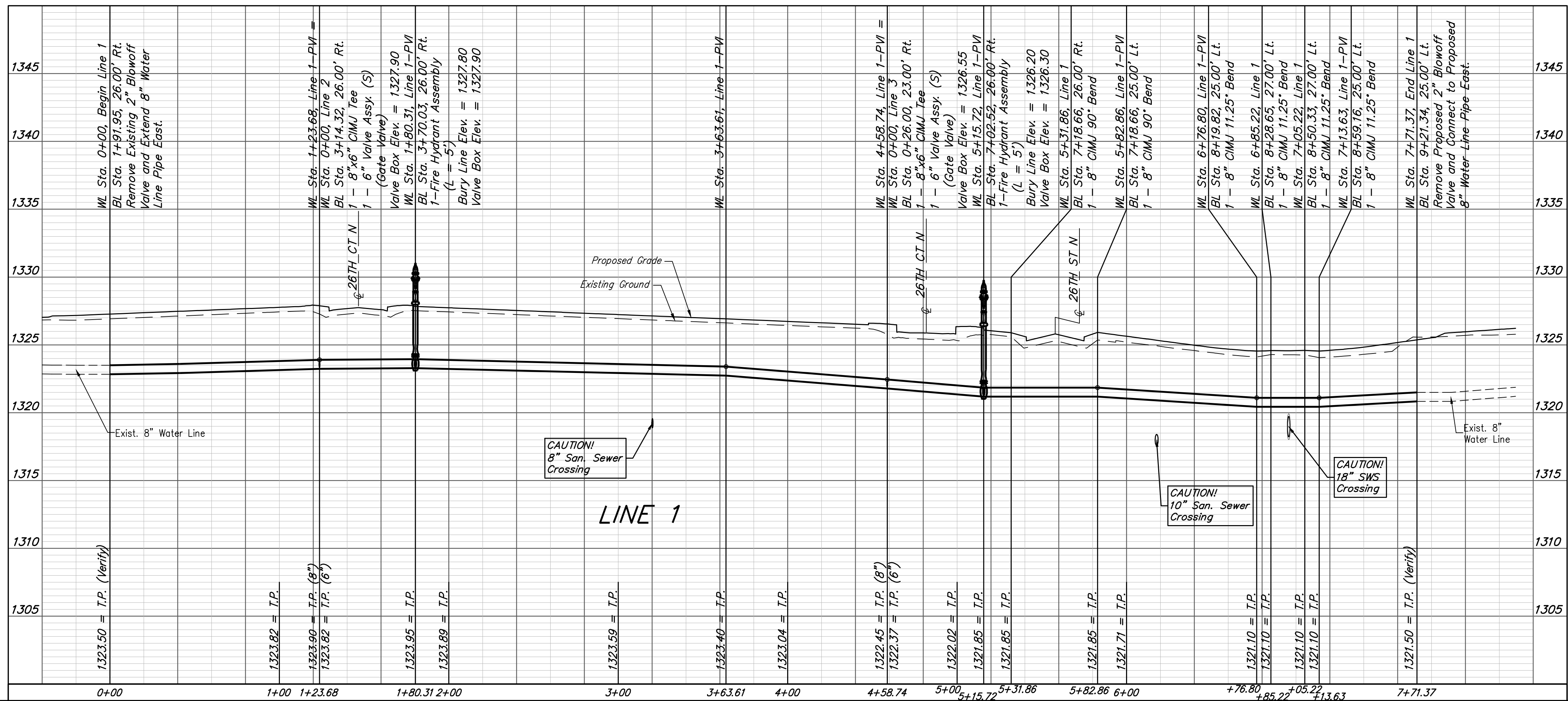
Proposed 8" Water Line Proj. #448-90898

Curve #1
 Curve Data Based on Centerline of Pipe
 Rad. = 1626' Delta = 112'25" Tangent = 161.68'
 Arc = 322.30' L.C. = 321.77' Def./Ft. = 1.05712 Min.

Station	Arc	Chord 8' Right	Defl.	Total Defl.
0+41.31	-	-	0'00"00"	0'00"00"
0+50.00	8.69'	8.73'	0'09"11"	0'09"11"
0+75.00	25.00'	25.12'	0'26"26"	0'35"37"
1+00.00	25.00'	25.12'	0'26"26"	1'02"03"
1+23.68	23.68'	23.80'	0'25"01"	1'27"04"
1+25.00	1.32'	1.33'	0'01"24"	1'28"28"
1+50.00	25.00'	25.12'	0'26"26"	1'54"54"
1+75.00	25.00'	25.12'	0'26"26"	2'21"20"
2+00.00	25.00'	25.12'	0'26"26"	2'47"45"
2+25.00	25.00'	25.12'	0'26"26"	3'14"11"
2+50.00	25.00'	25.12'	0'26"26"	3'40"37"
2+75.00	25.00'	25.12'	0'26"26"	4'07"02"
3+00.00	25.00'	25.12'	0'26"26"	4'33"28"
3+25.00	25.00'	25.12'	0'26"26"	4'59"54"
3+50.00	25.00'	25.12'	0'26"26"	5'26"19"
3+63.61	13.61'	13.68'	0'14"24"	5'40"43"

Curve #2
 Curve Data Based on Centerline of Pipe
 Rad. = 325' Delta = 33'10"45" Tangent = 96.82'
 Arc = 188.51' L.C. = 185.58' Def./Ft. = 5.28022 Min.

Station	Arc	Chord 8' Left	Defl.	Total Defl.
5+82.86	-	-	0'00"00"	0'00"00"
6+00.00	17.14'	16.69'	1'30"30"	1'30"30"
6+25.00	25.00'	24.34'	2'12"01"	3'42"31"
6+50.00	25.00'	24.34'	2'12"00"	5'54"31"
6+76.80	26.80'	26.09'	2'21"30"	8'16"01"
7+13.63	36.83'	35.85'	3'14"29"	11'30"30"
7+25.00	11.37'	11.07'	1'00"02"	12'30"32"
7+50.00	25.00'	24.34'	2'12"00"	14'42"32"
7+71.37	21.37'	20.81'	1'52"51"	16'35"23"



Baughman Sandcrest 4th Addition - Phase IV
LINE 1
 Water Distribution System

Baughman Company, P.A. 315 Ellis St. Wichita, KS 67211 P 316-262-7271 F 316-262-0149
 ENGINEERING | SURVEYING | PLANNING | LANDSCAPE ARCHITECTURE

PROJECT NUMBER: 448-90899
 DESIGN: AEG
 DRAWN: JAK
 APPROVED: [Signature]
 DATE: 11/21/19

REVISIONS:

SCALE: Noted
 SHEET: 4 OF 15

C:\Projects\Sandcrest 4th Addition_1801-P351\Engineering\Phase 4\WTR_19-10-1414\WTR PLANS.dwg