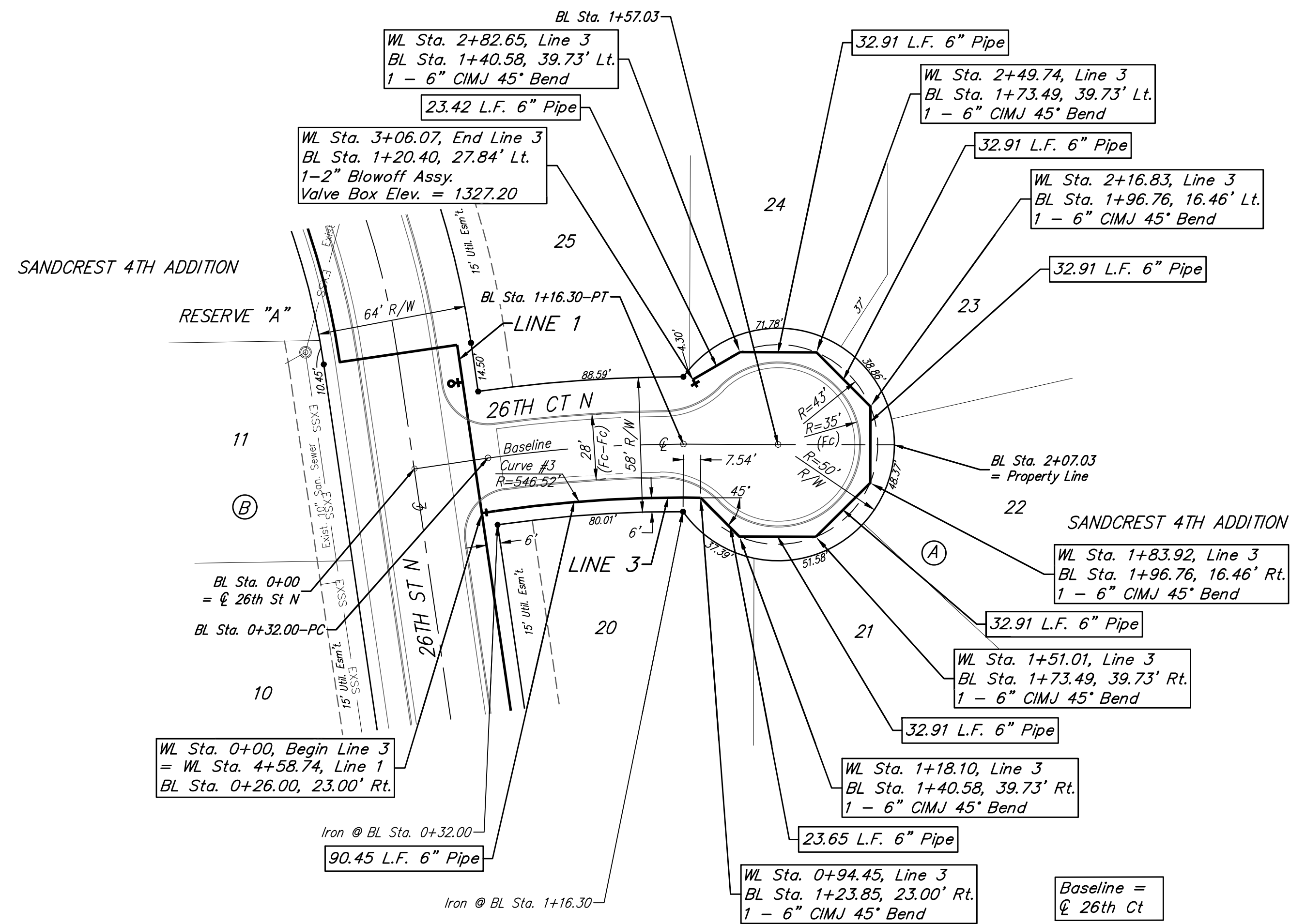


**BENCHMARKS:**  
 Benchmark Disk in top of curb north end of east curb return, adj. to the northwest cor., Lot 1, Block C, Sandcrest 4th Addn.  
 Elev. = 1338.02 NAVD88

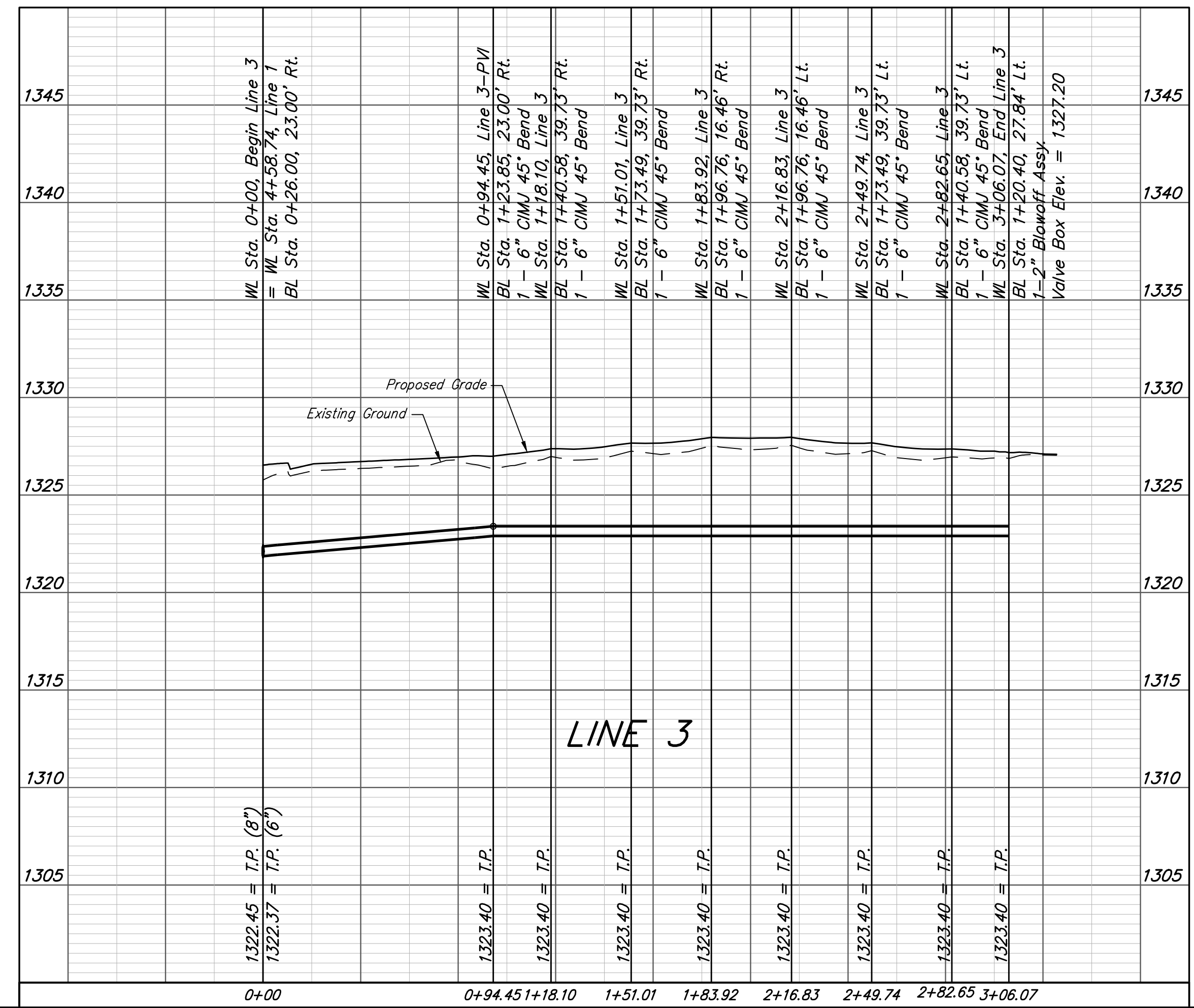
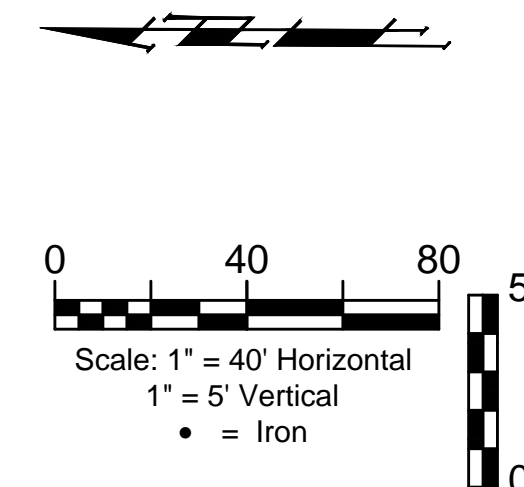
"□" cut in top of curb adj. to the southwest corner of Lot 42, Block B, Sandcrest 4th Addn.  
 Elev. = 1327.78 NAVD88

"□" cut in face of curb inlet, east side of Anna St, between Lot 3 & Lot 4, Block C, Sandcrest 4th Addn.  
 Elev. = 1327.09 NAVD88



Curve #3  
 Curve Data Based on Centerline of Pipe  
 Rad. = 546.52' Delta = 8'28'52" Tangent = 40.52'  
 Arc = 80.90' L.C. = 80.82' Def./Ft. = 3.14504 Min.

Station	Arc	Chord 8' Right	Defl.	Total Defl.
0+06.00	-	-	0'00'00"	0'00'00"
0+25.00	19.00'	18.72'	0'59'45"	0'59'45"
0+50.00	25.00'	24.63'	1'18'39"	2'18'23"
0+75.00	25.00'	24.63'	1'18'37"	3'37'00"
0+86.90	11.90'	11.73'	0'37'26"	4'14'26"



**Baughman** Sandcrest 4th Addition - Phase IV  
**LINE 3**  
 Water Distribution System

Baughman Company, P.A. 315 Ellis St. Wichita, KS 67211 P 316-262-7271 F 316-262-0149  
 ENGINEERING | SURVEYING | PLANNING | LANDSCAPE ARCHITECTURE

PROJECT NUMBER 448-90899	DESIGN AEG	DRAWN JAK
REVISIONS:	APPROVED	DATE 11/21/19
	SCALE Noted	SHEET <b>6 OF 15</b>

C:\Projects\Sandcrest 4th Addition\_1801-P351\Engineering\Phase 4\WTR\_19-10414\WTR\_PLANS.dwg