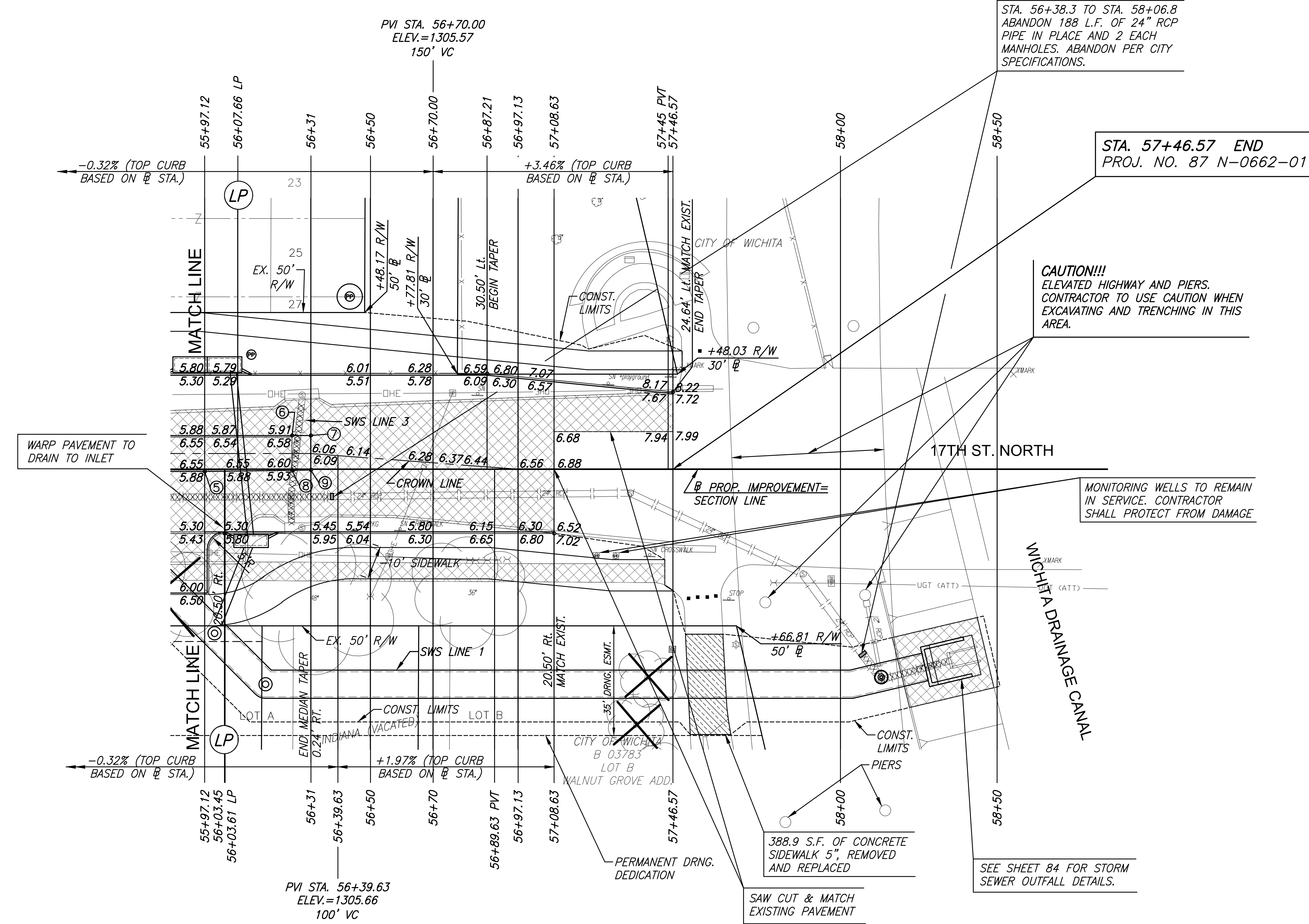
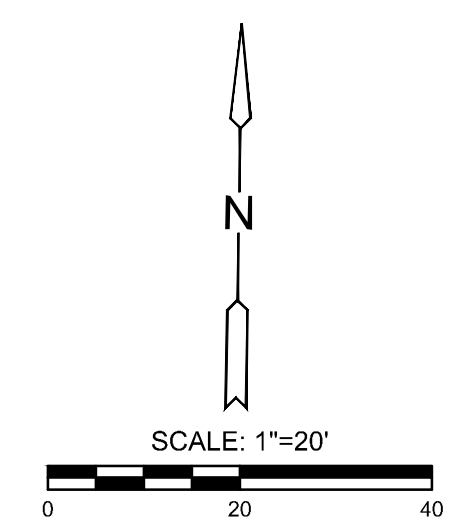


STATE	PROJECT NO.	YEAR	SHEET NO.	TOTAL SHEETS
KANSAS	87 N-0662-01	2019	12	194



STREET IMPROVEMENTS FOR
17TH ST - BROADWAY TO I-135
 FROM BROADWAY TO I-135

©2019 MKEC Engineering All Rights Reserved
 These drawings and their contents, including, but not limited to, all concepts, designs, & fees are the exclusive property of MKEC Engineering (MKEC), and may not be used or reproduced in any way without the express consent of MKEC.

17TH ST. PAVING
 PLAN STA. 55+97.12 TO STA. 59+00

PROJECT NO.	87 N-0662-01	
DATE	8/30/2019	
SCALE	1"=20'	
DESIGNED	DRAWN	CHECKED
GN	RAM	JRA

NO.	REVISION	DATE

SHEET NO. 12 OF 194

LEGEND

- PAVEMENT REMOVAL
- CONSTRUCT WHEELCHAIR RAMP SEE SH. NO. 66
- BRICK PAVERS
- AGGREGATE HOOKUP
- 8" SIDEWALK
- STORM SEWER REMOVAL
- PAVEMENT REMOVED AND REPLACED, SEE SH. NO. 85
- PROPOSED WESTAR POLE

STATION TO STATION	SIDE	ITEM	REMARKS
55+97.12 TO 56+24.7	8.9' RT.	27.6' OF 24" RCP	
56+24.7	8.9' RT.	SWS MANHOLE	
56+28.1	18.7' RT.	CURB INLET	
52+24.7 TO 56+28.1	8.9' TO 18.7' RT.	10.4' OF 24" RCP	
56+24.7 TO 56+28.2	8.9' RT. TO 23.6' LT.	32.7' OF 24" RCP	
56+28.2	23.6' LT.	CURB INLET	
56+24.7 TO 56+38.2	8.9' TO 8.7' RT.	13.6' OF 24" RCP	
58+06.8 TO 58+13.2	33.4' TO 67.2' RT.	9.7' OF 24" RCP	
58+13.2	67.2' RT.	SWS MANHOLE	
58+13.2 TO 58+35.8	67.2' TO 60.9' RT.	23.5' OF 24" RCP	
58+35.8	60.9' RT.	OUTFALL STRUCTURE	
58+19.5 TO 58+45.7	62.2' RT.	CONCRETE CHANNEL LINING	

POINT NO.	STATION	OFFSET	TOP CURB ELEVATION	FLOWLINE ELEVATION
5	55+97.12	0.75' RT.	1306.55	1305.88
6	56+25.00	10.75' LT.	1306.58	1305.91
7	56+31.00	10.75' LT.	1305.94	1305.94
8	56+25.00	0.33' RT.	1306.60	1305.93
9	56+31.00	0.24' RT.	1305.96	1305.96

PLOTTED: Tuesday, September 03, 2019 @ 11:54AM
 J:\CIVIL\177\DWG\PAV\177-EP\177-EP.RVT.DWG