

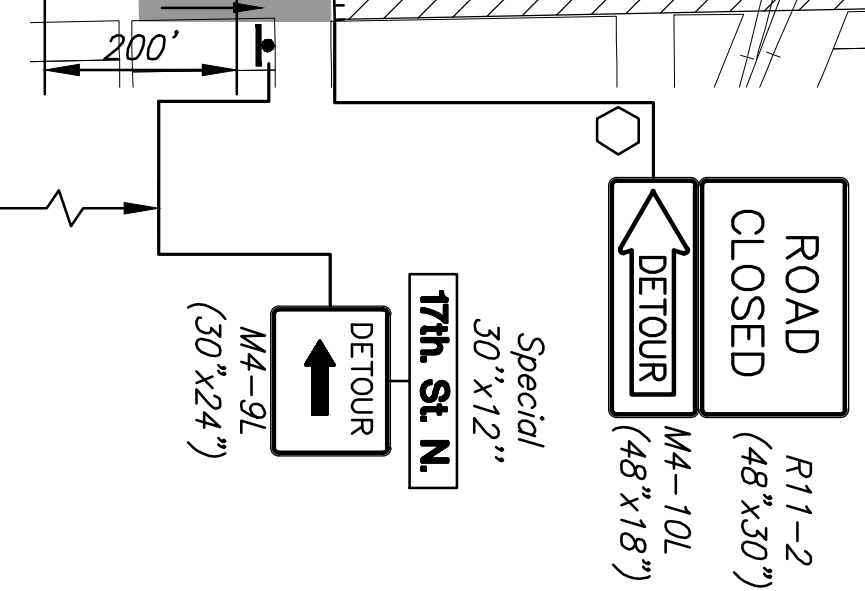
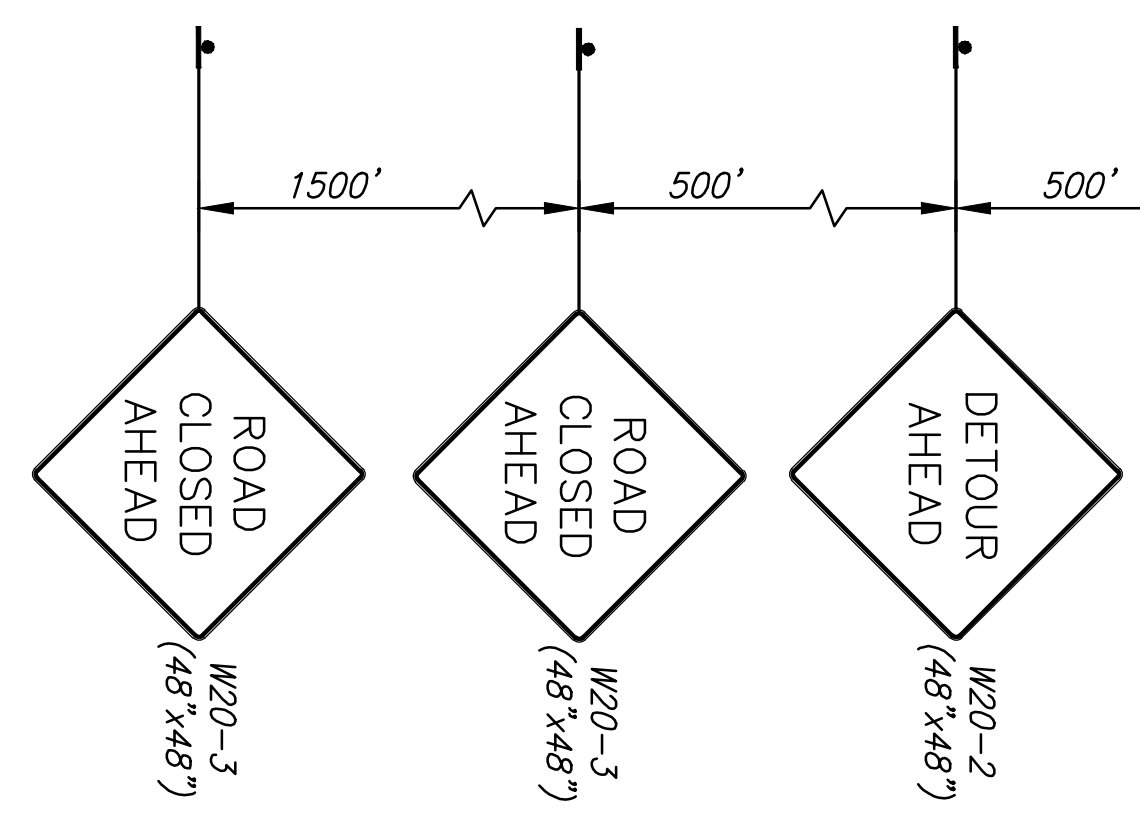
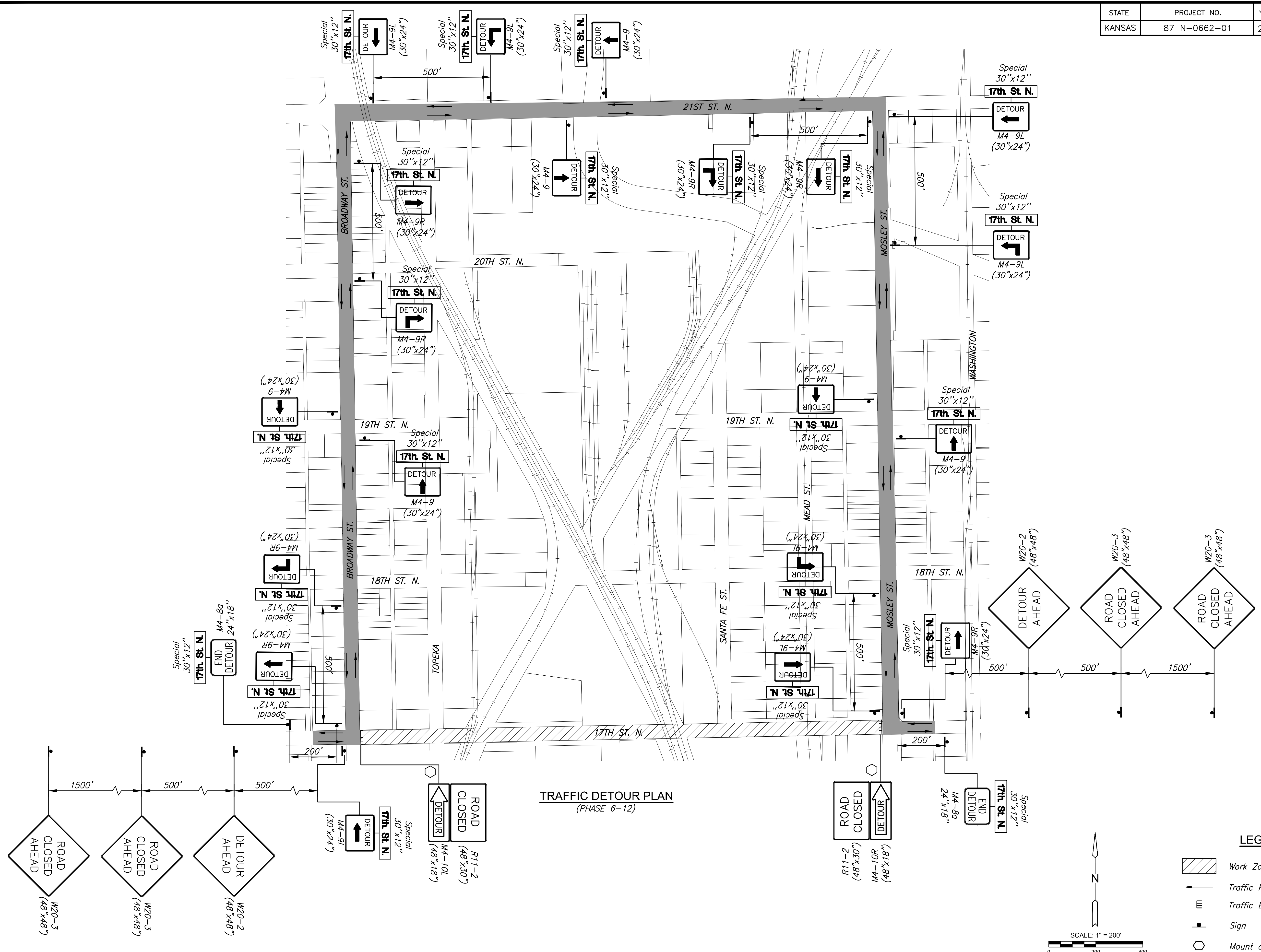
PLOTTED: Tuesday, September 03, 2019 @ 04:34PM

J:\CIVIL\177\DWG\TRAFFIC\177-193.DWG

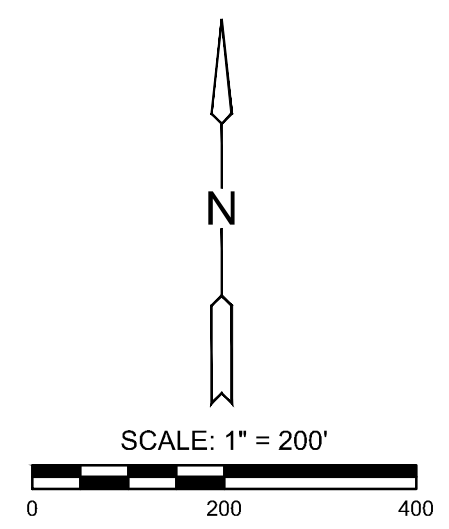
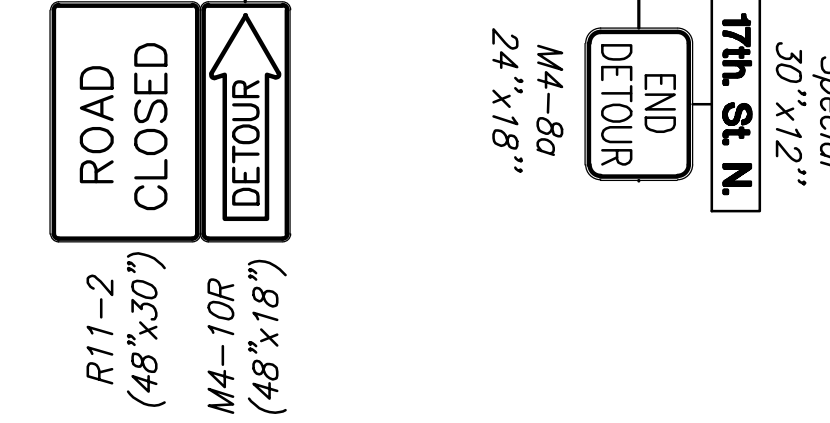
STATE	PROJECT NO.	YEAR	SHEET NO.	TOTAL SHEETS
KANSAS	87 N-0662-01	2019	155	194



STREET IMPROVEMENTS FOR  
**17TH ST - BROADWAY TO I-135**  
 FROM BROADWAY TO I-135



TRAFFIC DETOUR PLAN  
(PHASE 6-12)



**LEGEND**

	Work Zone
	Traffic Flow
	Traffic Barricades
	Sign
	Mount on Traffic Barricades

©2019 MKEC Engineering All Rights Reserved  
 These drawings and their contents, including, but not limited to, all concepts, designs, & ideas are the exclusive property of MKEC Engineering (MKEC), and may not be used or reproduced in any way without the express consent of MKEC.

**TRAFFIC DETOUR PLAN - PHASE 6-12**

PROJECT NO.	87 N-0662-01	
DATE	8/30/2019	
SCALE	1"=200'	
DESIGNED	DRAWN	CHECKED
JRA	RAM	JRA
NO.	REVISION	DATE