

### GENERAL TRAFFIC CONTROL NOTES

All signs and pavement markings conflicting with construction traffic control shall be covered or removed as directed by the Engineer.

As the various construction activities progress, certain situations may arise that will preclude adhering to the original construction sequence or which, in the opinion of the Contractor, would readily adapt themselves to a more efficient phasing operation. Should this occur, the Contractor may submit to the Engineer an alternative plan for approval.

Contractor shall maintain existing drainage system during construction and address local drainage issues as necessary during construction. Temporary drainage measures will be subsidiary to other items in the contract. Contractor shall provide for drainage in sump areas opened to traffic. Ponded stormwater in sump areas will not be allowed.

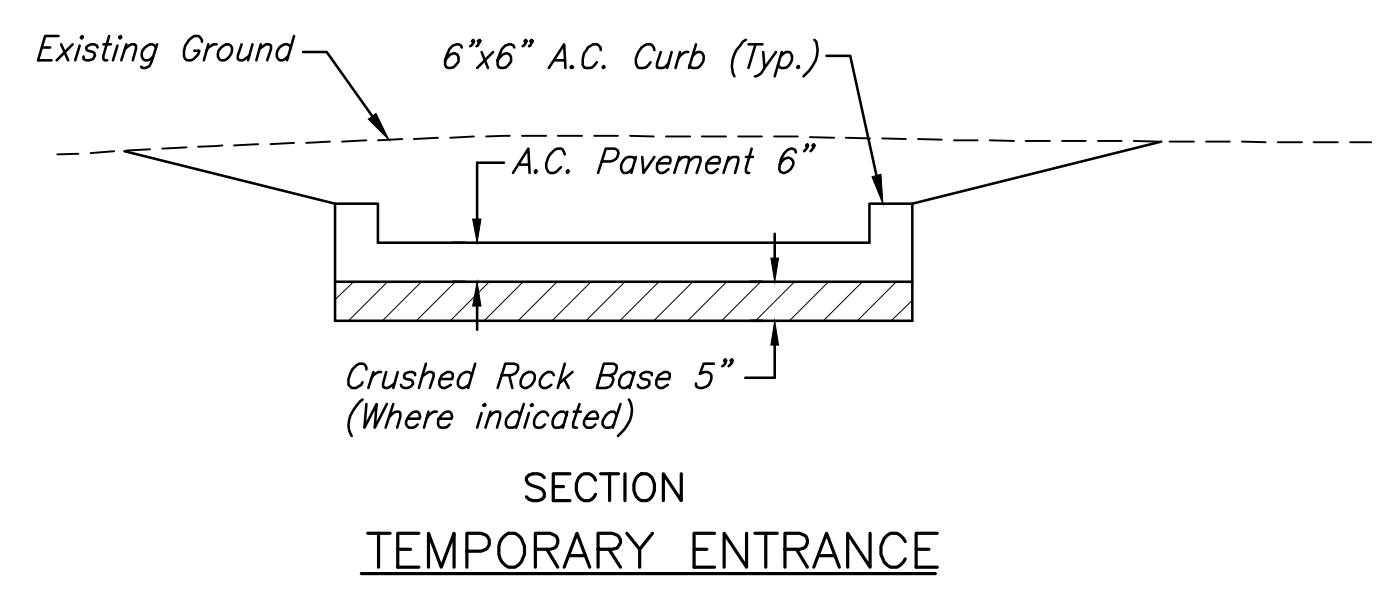
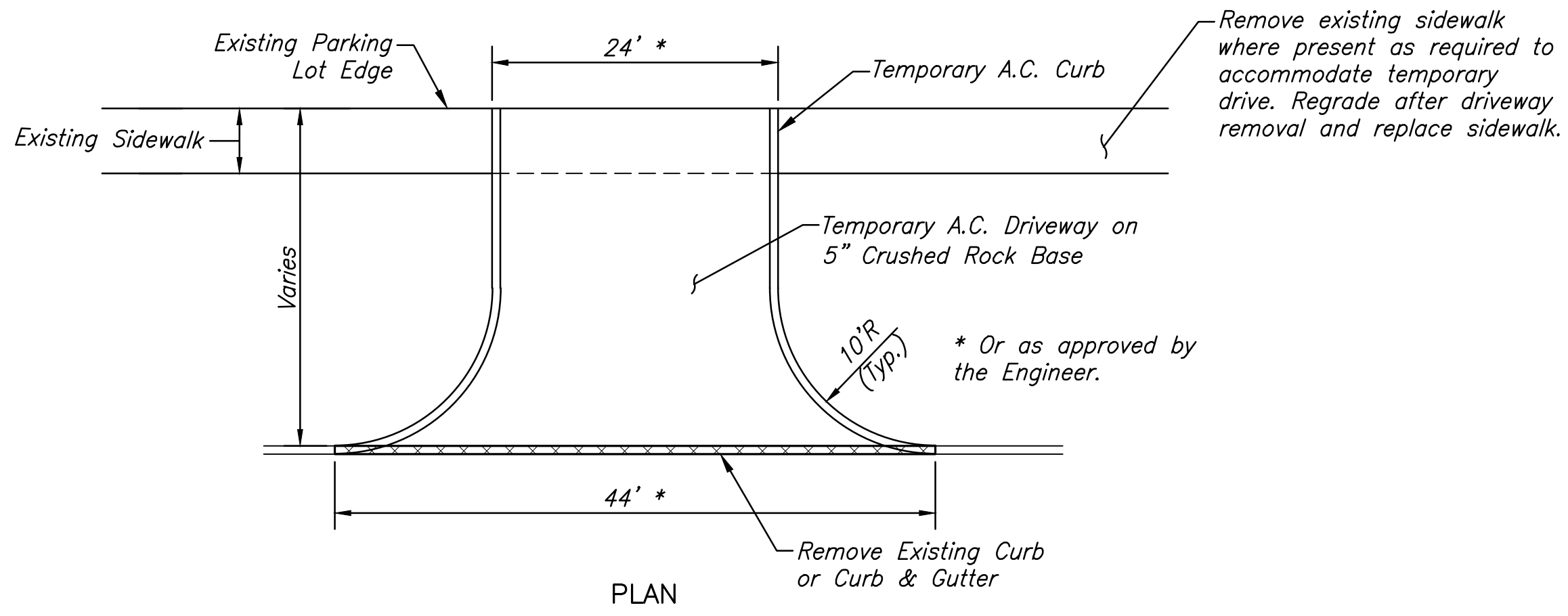
Maintain access to all driveways and entrances within the project limits at all times. Driveways 20' wide and wider shall be constructed half at a time with the other half remaining open. Driveways less than 20' may be closed completely during construction.

All traffic controls signs and devices shall be in conformance with the latest edition of the Manual on Uniform Traffic Control Devices.

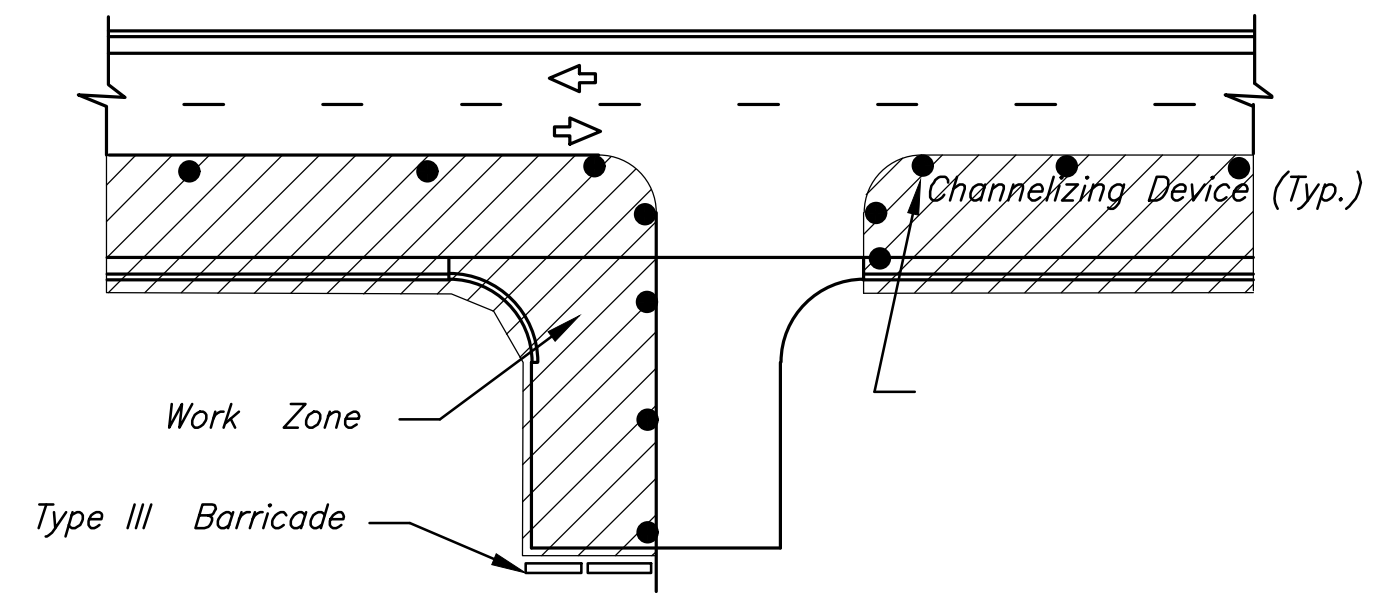
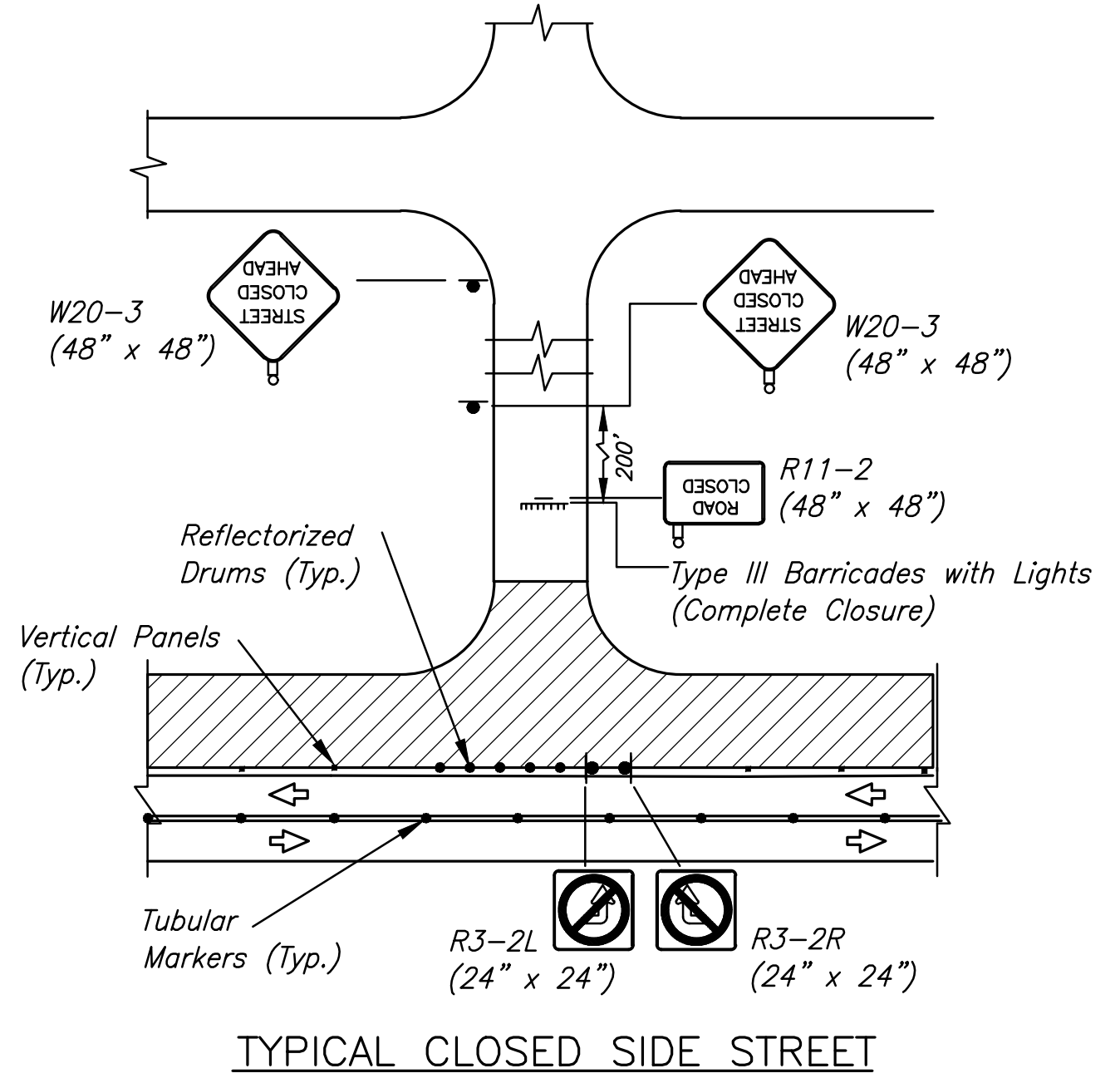
Contractor shall provide temporary asphalt pavement where necessary to bridge grade differentials between new and existing pavement. Cost of Temporary Surfacing Shall be paid for as "AC Pavement 6", Temporary. The 6" thickness is nominal and will be measured by the square yard. Actual thickness will vary as necessary to provide suitable grade transitions. Payment will be based on the area of asphalt placed. No adjustment in pay will be made based on actual thickness placed. The cost for the eventual removal of the asphalt material is included as part of the work of this item.

In the locations indicated and where else necessary to facilitate construction and traffic access during construction, the contractor shall construct driveways to serve properties with permanent access points cut-off due to construction. All removals and replacements shall be approved by the City prior to constructing. Temporary pavement shall consist of 6" asphalt over 5" crushed rock base on compacted subgrade. Temporary pavement shall be paid for as "A.C. Pavement 6", Temporary (Phase Shifts), "Crushed Rock Base 5" Temporary", and "A.C. Curb, Temporary" and shall include all work to construct and eventually remove the temporary pavement. Existing curb and gutter removed to accommodate the temporary drive shall be removed and eventually replaced and shall be paid for as "Concrete C&G Removed and Replaced" or "Concrete Curb, Mono Edge, Removed and Replaced" depending on the original curb type. Sidewalk and Fence removal and replacement may also be required in some locations.

During construction, temporary traffic signals are to be erected to replace existing signals throughout the project. The bid item "Traffic Signalization, Temporary" will include all equipment, materials and labor to erect a temporary signal at each location to replace the operation of the existing signal prior to the installation and operation of the new traffic signal. This will include multiple pole and span-wire arrangements, if necessary and traffic signal head placement to accommodate all phases of construction.

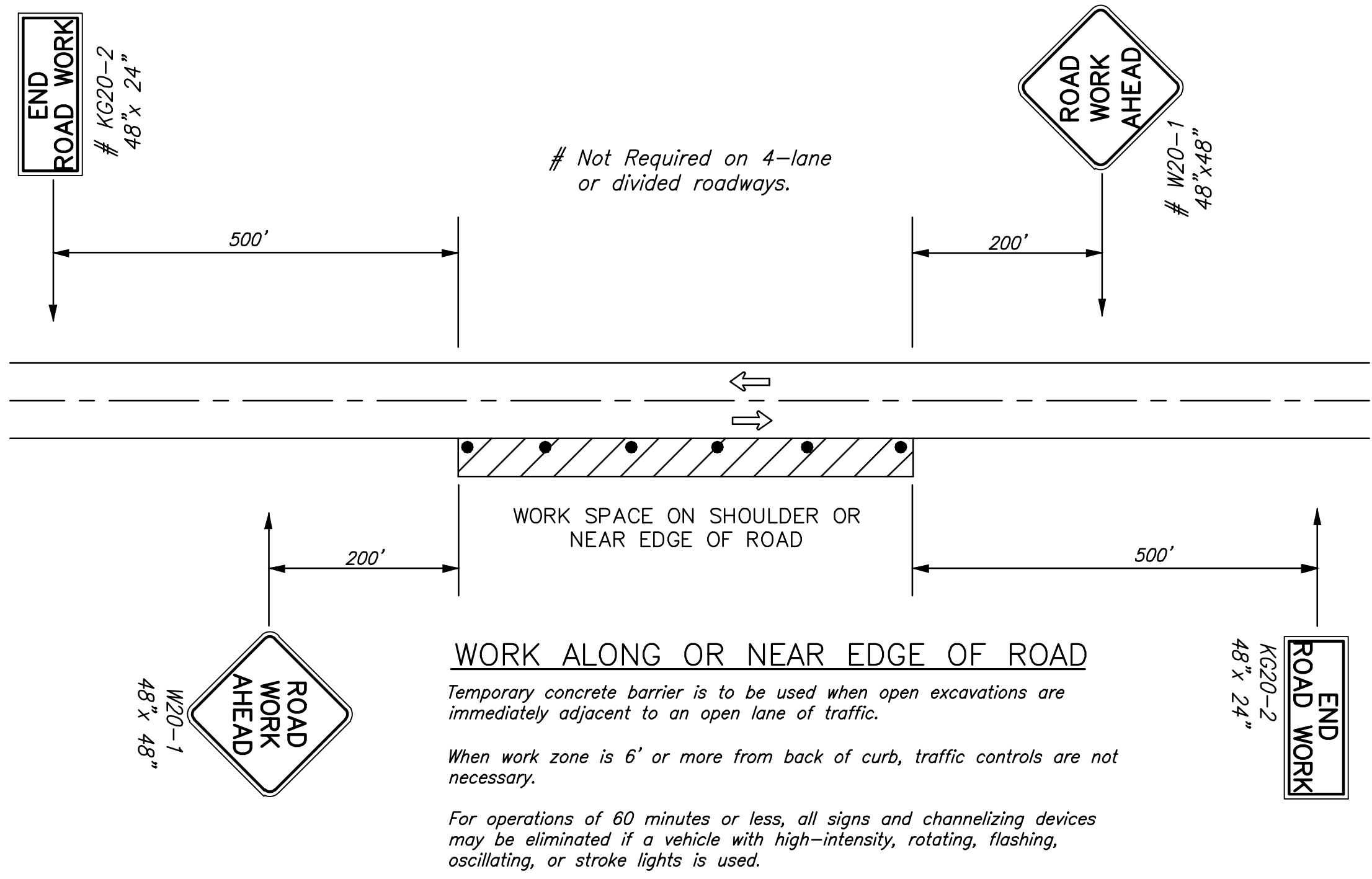
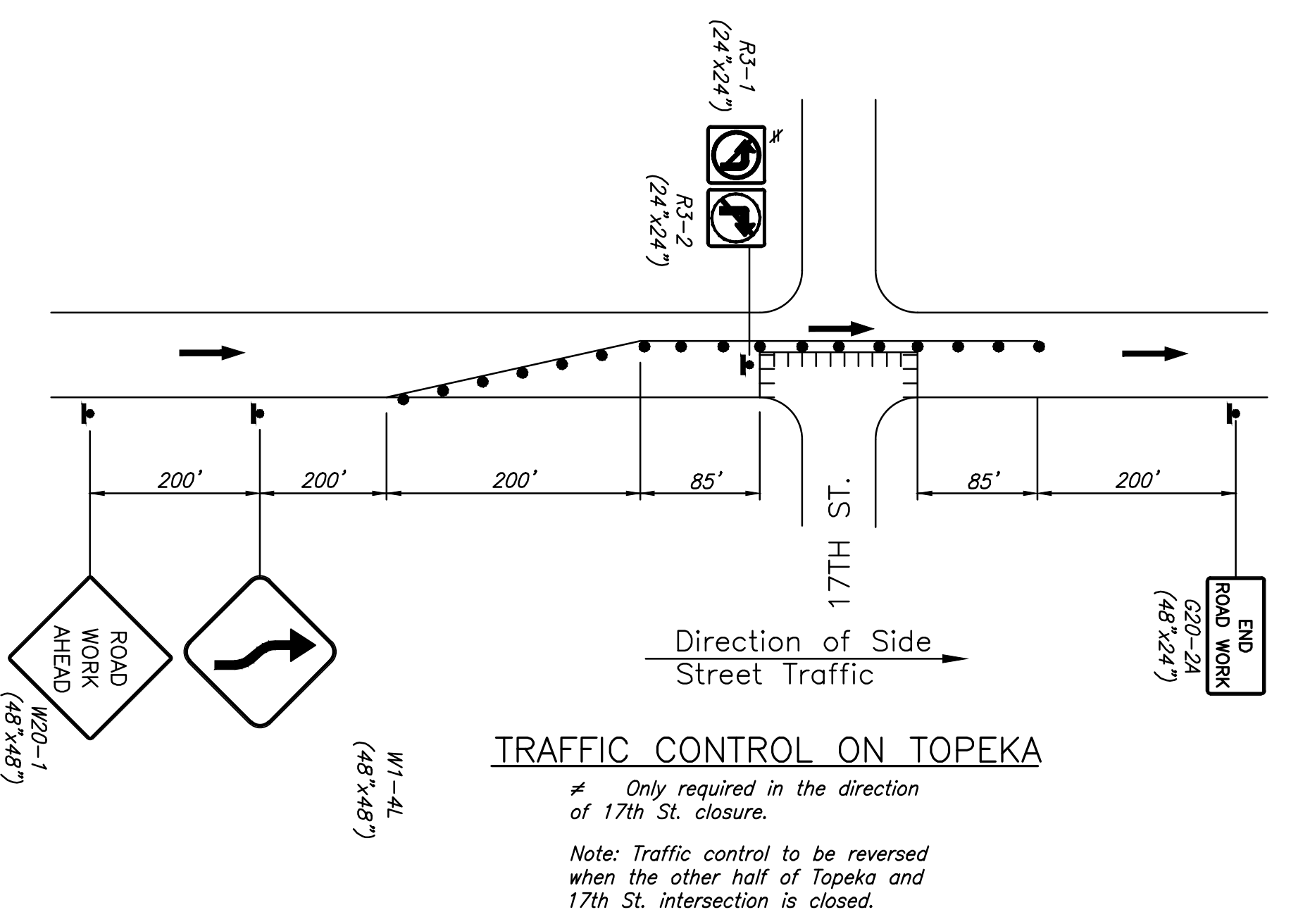
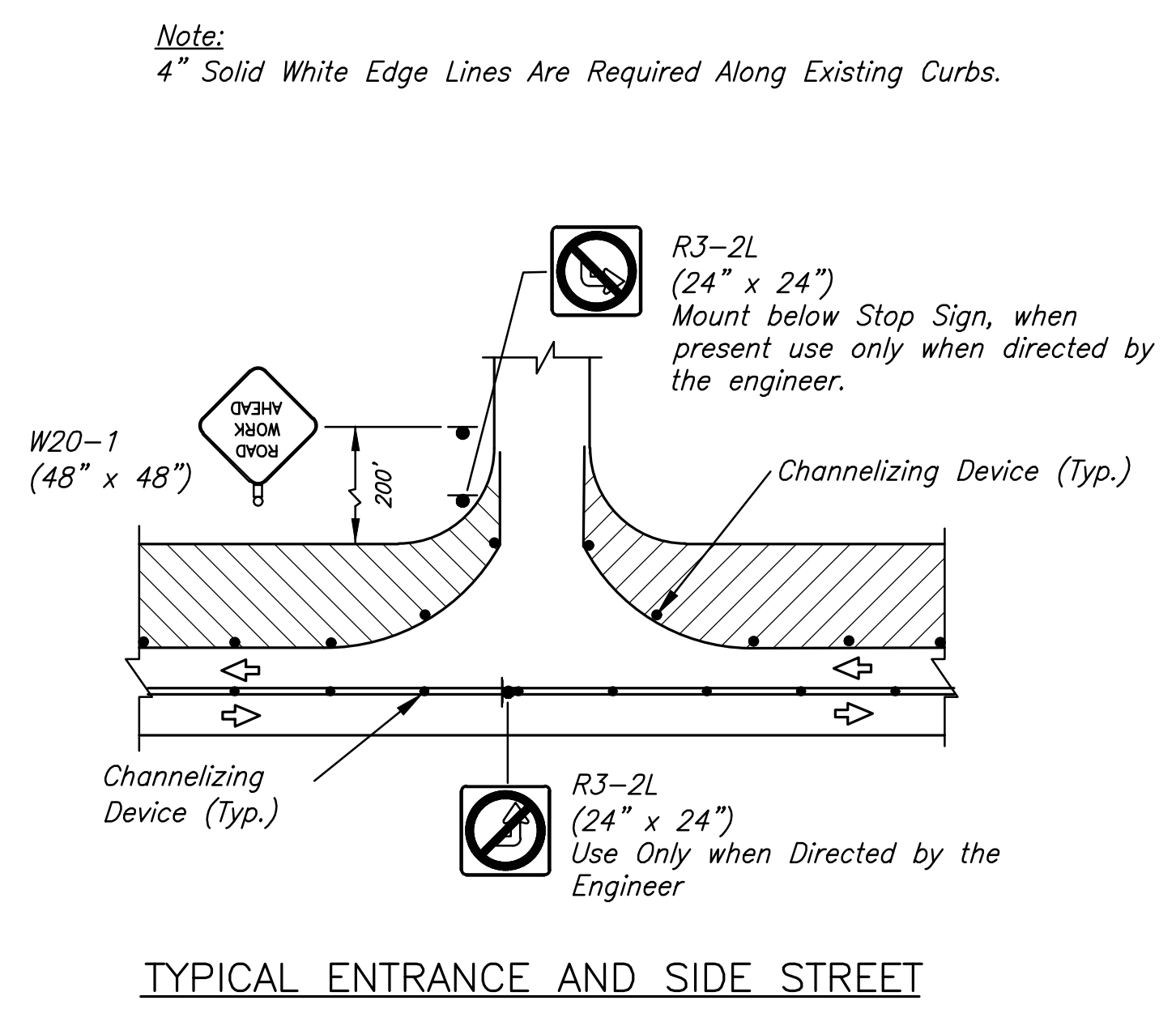


TEMPORARY PAVEMENT PATCHING									
Location	Side	AC Pavement 6", Temporary (sy)	AC Pavement 6", Temporary (Phase Shifts) (sy)	Crushed Rock Base 5", Temporary (sy)	AC Curb, Temporary (lf)	Concrete Curb & Gutter, Removed and Replaced (lf)	Concrete Curb, Mono Edge, Removed and Replaced (lf)	Concrete Sidewalk 4", Removed and Replaced (sf)	Fence Removed and Replaced (lf)
TRAFFIC CONTROL									
49+92	68' RT.		85.0	0.0	60.0	15.0	44.0	136.0	0.0
37+80	20' RT.		72.0	72.0	42.0		0.0	0.0	40.0
PROJECT		1000.00							
<b>Totals</b>		<b>1000.0</b>	<b>157.0</b>	<b>72.0</b>	<b>102.0</b>	<b>15.0</b>	<b>44.0</b>	<b>136.0</b>	<b>40.0</b>



Note:  
4" Solid White Edge Lines Are Required Along Existing Curbs.

Maintain access to businesses at all times. If a single property has multiple entrances, one entrance at a time may be closed for construction.



STREET IMPROVEMENTS FOR  
**17TH ST - BROADWAY TO I-135**  
FROM BROADWAY TO I-135

©2019 MKEC Engineering All Rights Reserved  
www.mkec.com  
These drawings and their contents, including, but not limited to, all concepts, designs, & lists are the exclusive property of MKEC Engineering (MKEC), and may not be used or reproduced in any way without the express consent of MKEC.

### MISCELLANEOUS TRAFFIC CONTROL DETAILS

PROJECT NO.	87 N-0662-01	
DATE	8/30/2019	
SCALE	NA	
DESIGNED	JRA	
DRAWN	MKEC	
CHECKED	JRA	
NO.	REVISION	DATE
SHEET NO.		