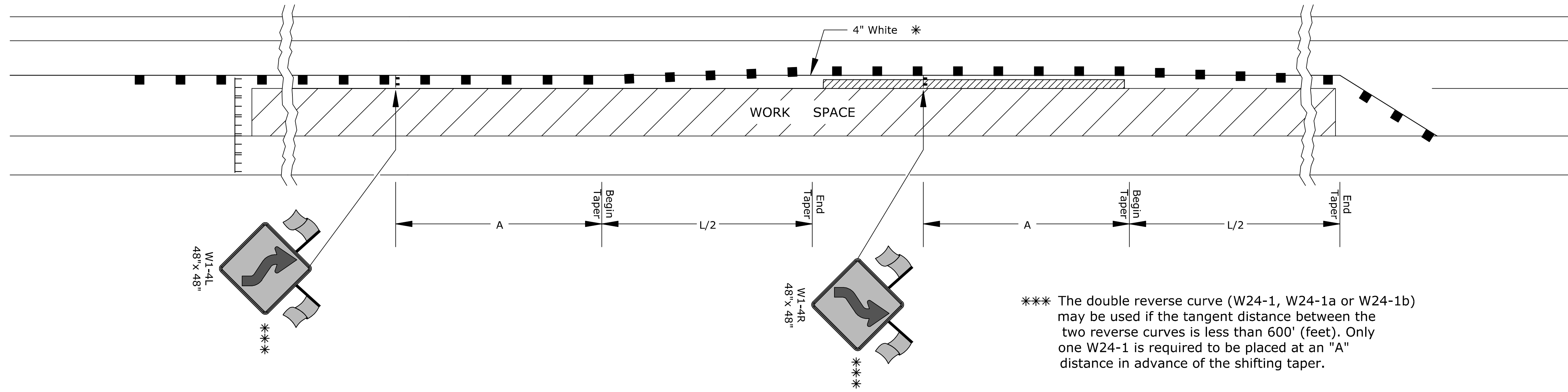


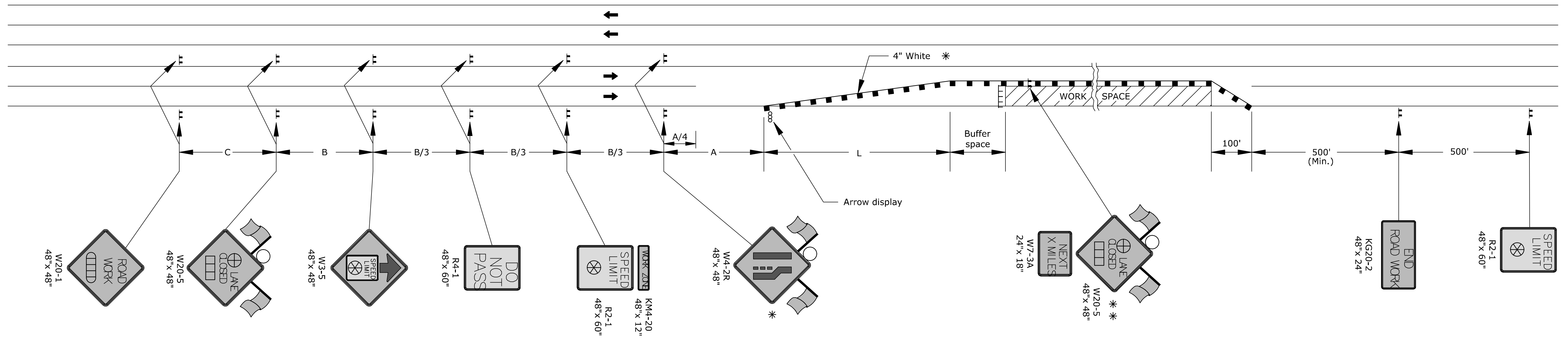
STATE	PROJECT NO.	YEAR	SHEET NO.	TOTAL SHEETS
KANSAS	87 N-0662-01	2019	160	194

SHIFTING TAPER DETAIL

Add signs and devices as shown for work inside a closed lane that extends near to (or into) the open traffic lane.



*** The double reverse curve (W24-1, W24-1a or W24-1b) may be used if the tangent distance between the two reverse curves is less than 600' (feet). Only one W24-1 is required to be placed at an "A" distance in advance of the shifting taper.



- ▬ Type 3 barricades
- X Length to the nearest whole mile
- Channelizing device
- ▭ Ahead, 1500 ft, or 1 mile
- ▭ Ahead, 1000 ft, 1500 ft, or 1/2 mile
- ⊕ Right or left
- ⊗ Speed to be determined by the Engineer
- Type "A" low intensity warning light

* For left lane closures use W4-2L and yellow edge line along channelizing devices.

* * The W20-5 (⊕ Lane Closed) and W7-3A (Next X Miles) signs should be placed at 2 mile increments on a project of 4 miles or longer.

Left-side signs shall be omitted for a four-lane undivided highway.

One flagger should be stationed within each multi-lane roadway activity area where work is in a closed lane adjacent to traffic and not separated by a concrete safety barrier system.

Drawn By: USERNAME Plotted: \$\$\$\$ TIME \$\$\$\$ File: \$\$\$\$ DGN SPEC \$\$\$\$ \$\$\$\$ KDOT GRP \$\$\$\$

J:\K1618477\DWG\67504177\FCD11.DWG

KANSAS DEPARTMENT OF TRANSPORTATION				
TRAFFIC CONTROL LANE CLOSURE ON MULTI LANE HWY				
TE744__				
3				
2				
1				
NO.	DATE	REVISIONS	BY	APP'D
FHWA APPROVAL 06/01/15 APP'D Kristino Ericksen				
DESIGNED	B.A.H.	DETAILED	R.W.B.	QUANTITIES
DESIGN CK.	DETAIL CK.	QUAN. CK.		TRACE CK.

KDOT Graphics Certified